



BACARDÍ

DEC 14-15, 2019

INVITATIONAL WINTER SERIES

BACARDI INVITATIONAL WINTER SERIES

Event #1

MIAMI, FLORIDA, U.S.A

December 14-15, 2019 (J/70 & Melges 24)

SAILING INSTRUCTIONS

The organizing authority is Twelve USA, INC. The host facility is Shake a Leg Miami (SALM), 2620 S Bayshore Drive. The invited classes are Melges 24 and J/70.

1. RULES

1.1 The regatta will be governed by the rules as defined in *The Racing Rules of Sailing (RRS)*.

1.2 Rules and US Sailing prescriptions which are applicable are: rule 61.4, Appendix R, and prescriptions to rules 40, 60.3, 67, 70.5(a), 76.1 and Appendix V. These will be posted on the official notice board. No other prescriptions are applicable. The penalty specified in Appendix V2 is changed to be 5 points.

1.3 Except for the rules of RRS PARTS 2 and 3, the jury may impose an alternate penalty less than DSQ for breaking a rule, in accordance with RRS 64.1.

1.4 If there is a conflict between languages, the English text will take precedence.

1.5 All boats shall carry a functioning VHF radio for emergencies and monitoring the race committee. The VHF channel is **72**. If the channel is changed notice will be posted on the signal vessel.

1.6 The rules of the classes will be in effect, except where changed in the notice of race (NOR) and these sailing instructions (SI).

1.7 If there is a conflict between the NOR, SI, or with class rules, the sailing instructions will take precedence. This changes RRS 63.7.

2. NOTICES TO COMPETITORS

2.1 Notices to competitors will be posted on the official notice board on the first floor lobby at SALM.

3. CHANGES TO THE SAILING INSTRUCTIONS

3.1 Any change to the SI will be posted before 0900 on the day it will take effect, except that any change to the schedule of races will be posted by 2000 on the day before it will take effect.

4. SIGNALS MADE ASHORE

4.1 Signals made ashore will be displayed from the flag pole at SALM. When flag **AP** is displayed ashore, '1 minute' is replaced with 'not less than 60 minutes' in RACE SIGNAL **AP**.

5. SCHEDULE OF EVENTS

5.1 Boats will check-in before the regatta. See NOR 6. **SCHEDULE OF EVENTS.**

5.2 Additional information of events will be posted on the regatta website.

6. CLASS FLAGS

6.1 Class flags will be the Melges 24 or J/70 class insignia on a white background.

7. RACING AREA

7.1 The racing area will be on Biscayne Bay approximately 2 - 3 nm south of Dinner Key Channel marker number "1". **ILLUSTRATION - RACING AREA.**

8. COURSES

8.1 No later than the warning signal for the class, the race committee signal vessel will display the course designation, the approximate compass bearing, and the length of the first leg.

8.2 Courses will be windward/leeward with a windward offset and a gate(s).

9. MARKS

9.1 Windward mark **1** will be a white cylinder. Offset mark **O** will be an orange cylinder positioned at approximately 90 degrees to port of mark 1. Both marks shall be left to port.

9.2 Leeward marks **2s** and **2p** will be a gate between yellow cylinders. Boats will sail between the gate marks from the previous mark and may round either mark.

9.3 For the J/70 Class only, a gate consisting of orange cylinders proximal to **2s** and **2p** may be made.

9.4 If only a single mark is present at the location for mark **1** or **2**, boats shall leave the mark to port.

10. THE START

10.1 Races will be started by using RRS 26 with the warning signal made 5 minutes before the starting signal.

10.2 The starting line will be between a staff displaying an orange flag on a race committee vessel at the starboard end and a yellow mark at the port end.

10.3 When applicable, flag **X** will be displayed for up to **4** minutes. This changes RRS 29.1.

10.4 A boat that does not start within 4 minutes after her starting signal will be scored Did Not Start without a hearing. This change RRS A4 and A5.

10.5 If a boat is identified on the course side of the starting line at the starting signal the race committee will attempt to broadcast the bow number, or if the boat is identified by sail number by first stating "sail" followed by the number. Failure to make a broadcast or to time it accurately will not be grounds for a request for redress. This changes RRS 62.1(a).

11. CHANGE OF THE COURSE

11.1 To signal the presence of a separate gate for the J/70 Class, as described in SI 9.3, flag **O** will be displayed at mark **1** with multiple sound signals before the first J/70 passes the mark.

11.2 The race committee may only shorten the course for a class when the first boat in the class completes three legs of the course.

12. THE FINISH

12.1 The finishing line will be between a staff displaying an orange flag on a race committee vessel at the starboard end and a yellow mark at the port end.

13. TIME LIMITS

13.1 A race shall be abandoned in which no boat after the start of her class passes the windward mark within 30 minutes or no boat sails the course and finishes within 90 minutes. Boats not finishing within 15 minutes of the first boat in her class to sail the course and finish will be scored Did Not Finish without a hearing. This changes RRS 35, A4.1 and A4.2.

14. PENALTY SYSTEM

14.1 See SI 1.2 and 1.3.

15. SUPPORT PERSON AND VESSELS

15.1 Support persons will register and provide their cell phone number and vessel identification at the check-in desk in order to be eligible for entry to the regatta venue and to have access to regatta events.

15.2 Support person's vessels shall remain outside of the areas where boats are starting and racing as well as outside race committee and jury vessels from the time of the warning signal for the class until all boats have finished or retired, or the race committee signals an abandonment, or to provide assistance in an emergency.

15.3 Support vessels will monitor the race committee VHF frequency. The race committee or jury may warn by VHF radio a *Support Person/Vessel* who in their opinion is about to infringe the race area before acting under RRS 3, 60.3(d) or 64.4.

16. PROTESTS AND REQUESTS FOR REDRESS

16.1 As soon as practicable after a boat's finish of the race, a boat intending to protest, request redress or retiring from that race will notify the race committee signal vessel of their intent, or if impracticable by contacting the race officer by cell phone.

16.2 Actions of the Race Committee including competitor intent to protest and request for redress will be posted on the official notice board prior to the protest time limit. The protest time limit is 90 minutes after the last boat to finish in her class, AP over A is displayed on the water, or 60 minutes after AP over A is displayed ashore.

16.3 Protest forms will be available at the jury desk on the first floor of SALM. Protests will be scheduled to be heard approximately in the order of submission of completed protest forms. The schedule of hearings will be posted on the jury board no later than 10 minutes after the protest time limit. Parties and witnesses for protests should report to the jury desk at the scheduled time of the hearing for that protest and wait in the vicinity until called.

16.4 On the last scheduled day of racing a request for redress based on a jury decision or race committee action shall be delivered no later than 30 minutes after the decision or action is posted or the protest time limit, which is later. This changes RRS 62.2.

17. SCORING

17.1 Six races are scheduled. When three races have been completed a boat's score will be the total of her race scores less her worst score. If there are less than three races completed, a boat's score will be the total of her race scores.

17.2 Melges 24 and J/70 Corinthian Divisions will be established. For a boat to be eligible, at check in the person in charge (RRS 46) and crew must sign an affidavit that they are eligible as World Sailing Category 1. The Corinthian Divisions shall be scored using competitor's fleet scores.

18. BACARDI INVITATIONAL WINTER SERIES SCORE

18.1 There will be class first, second and third place overall prizes for the BACARDI INVITATIONAL WINTER SERIES.

18.2 A boat's score for the SERIES will be her score from Event 3 added to the score of either Event 1 or 2, whichever is lower.

19. SAFETY REGULATIONS

19.1 Before her first start of the day, boats will check-in with the race committee by sailing on starboard past the stern of the signal vessel until their bow number is hailed by the race committee. There will be no check-in during a starting sequence. Boats failing to check in will be scored DNC.

20. REPLACEMENT OF CREW OR EQUIPMENT

20.1 During a regatta, the number of crew must remain the same. Substitution of crew or equipment is not permitted without written approval of the regatta chairman or jury.

20.2 To qualify for the Overall Winter Series, the same person must **be** at the helm in accordance with the class rules for major championships. The crew may change between regattas.

21. EQUIPMENT AND MEASUREMENT CHECKS

21.1 There will be NO crew weigh-in. The number of crew will be in compliance with class rules.

21.2 If requested by the jury, the person in charge shall promptly submit a valid measurement certificate. Boats may be subject to equipment inspection and measurement at any time, if ordered by the jury following a valid protest.

22. EVENT ADVERTISING

22.1 Boats will display the event sponsor's advertising on the hull in compliance with World Sailing REGULATION 20, ADVERTISING CODE. Materials will be supplied at check in.

23. HAUL-OUT RESTRICTIONS

23.1 Boats will not be hauled out during the regatta without the written permission of the race officer or the jury.

24. BOW NUMBERS

24.1 J/70 class boats at check in will be provided with bow numbers and instructions for their application.

24.2 Melges 24 class bow numbers will be submitted at check-in.

25. RADIO COMMUNICATIONS

25.1 Except in an emergency, a boat that is racing shall not make voice or data transmissions nor receive voice or data communications that is not available to all boats.

26. PRIZES

26.1 There will be first, second and third place Fleet and Corinthian Division regatta prizes for the Melges 24 and J/70 Classes. A boat is eligible to receive prizes for both Fleet and Corinthian Divisions.

27. DISCLAIMER OF LIABILITY

27.1 In addition to RRS 4 Decision to Race, the safety of a boat and her entire management shall be the responsibility of the owner(s) and the owner's representative. Sailing is an activity that has an inherent risk of damage and injury. Competitors in this event are participating entirely at their own risk. The regatta organizers (organizing authority, race committee, protest committee, host club, sponsors, or any other participating organizing authority or official) will not be responsible for damage to any boat or property or the injury to any competitor, including death, sustained as a result of participation in these events.

27.2 By participating in this event, each competitor agrees to release the regatta organizers from any and all liability associated with participation in this event to the fullest extent permitted by law.

28. INSURANCE

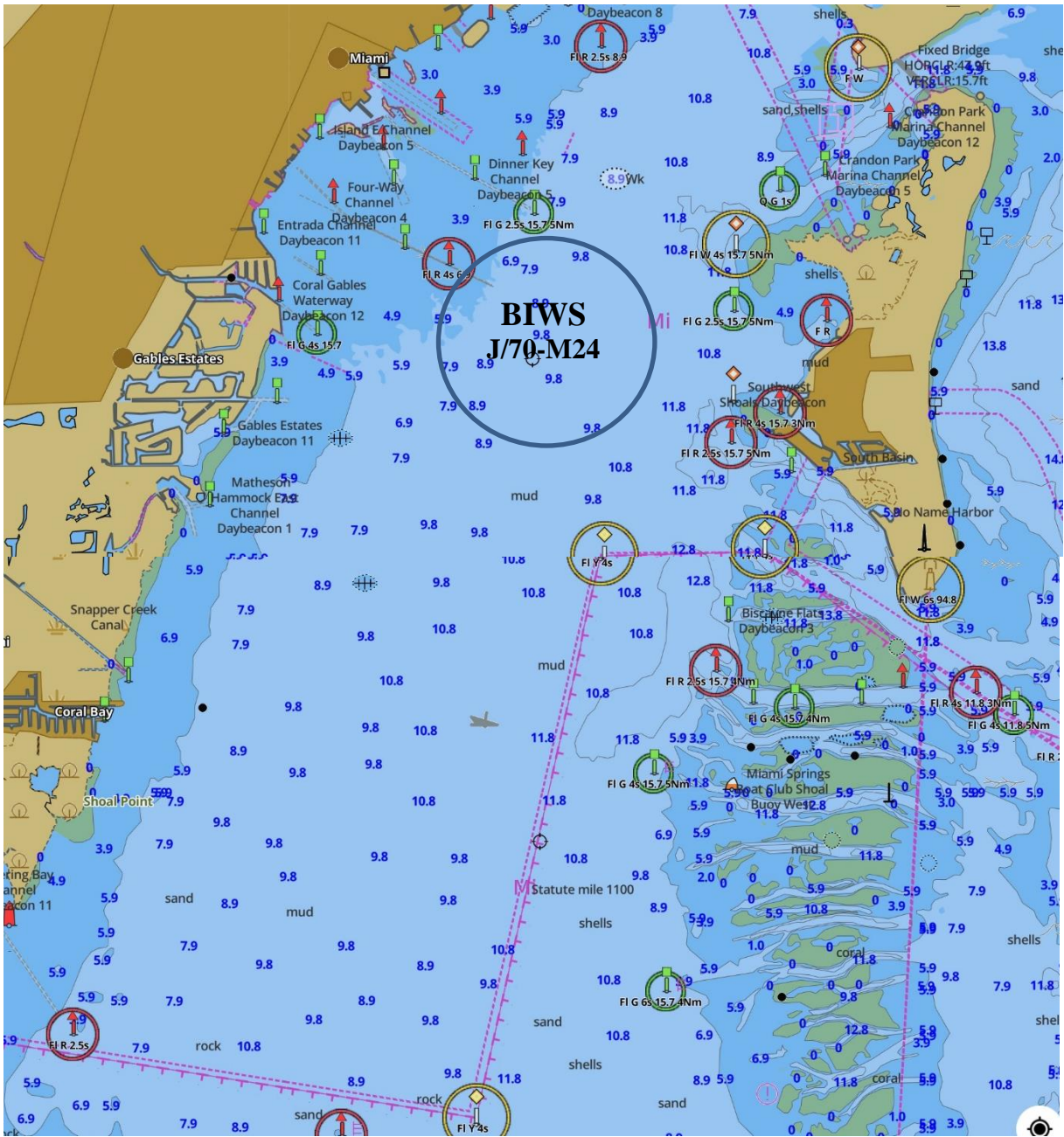
28.1 Each participating boat shall be insured with valid third party insurance with a minimum cover of \$300,000 USD per incident or the equivalent.

29. INFORMATION CONTACTS

EVENT DIRECTOR:	SARA ZANOBINI	sara@bacardiinvitational.com
REGATTA CHAIRMAN:	MARK PINCUS	mwpincus@aol.com
PRINCIPAL RACE OFFICER:	CAROL EWING	305-785-4777
SHAKE A LEG MIAMI:	KARIS STARKE	305-728-4717

2019 BACARDI INVITATIONAL WINTER SERIES 1

Race Circle



Circle	Fleets	Diameter	VHF
Bravo	J70 – Melges 24	1.5 nm	72