

# Sailing Instructions – The Manhattan Regatta 2013

---

Organizing Authority (OA) – J/105 Class Fleet 10

## 1. RULES

- 1.1. The regatta will be governed by the rules as defined in *The Racing Rules of Sailing* (RRS).
- 1.2. Should there be a conflict between the sailing instructions and the Notice of Race (NOR), the sailing instructions will take precedence. This changes RRS rule 63.7.

## 2. NOTICES TO COMPETITORS

- 2.1. Notices to competitors will be posted on the event website:  
<http://www.yachtscoring.com/emenu.cfm?eID=833>
- 2.2. Copies may be available on notice boards located on the Lightship at Liberty Landing Marina (LLM).

## 3. CHANGES TO SAILING INSTRUCTIONS

- 3.1. Any change to the sailing instructions will be posted on the event website before 0900 on the day it will take effect.
- 3.2. Any change to the schedule of races will be posted on the event website before 2000 on the day before it will take effect.
- 3.3. The Race Committee (RC) may make changes to these sailing instructions verbally on the water via VHF Ch 69, at its sole discretion.

## 4. SIGNALS MADE ASHORE

- 4.1. Signals made ashore will be displayed at the Lightship at Liberty Landing Marina , NJ
- 4.2. When flag AP is displayed ashore, '1 minute' is replaced with 'not less than one hour' in the race signal AP description. This changes RRS Signals.

## 5. SCHEDULE OF RACES

- 5.1. Saturday (5/19) The warning signal for PHRF Division will be at 1255. The warning signal for the J105 division will be 1325.
- 5.2. Sunday (5/20) The warning signal for PHRF Division will be at 1025. The warning signal for the J105 division will be 1055.
- 5.3. It is the intention of the RC to run as many races as possible. Code Flag 'A' displayed either at or soon after the finish indicates that there will be no further racing that day. Also, it is the RC's intention not to have a warning signal after 1705 on Saturday or 1500 on Sunday.

## 6. CLASS FLAGS

- 6.1. The class flag for the J/105s will be the #1 pennant.
- 6.2. The class flag for the PHRF's will be a #2 pennant.

## **7. RACING AREA**

- 7.1. Appendix 1 shows the approximate location of the racing area and start areas.
- 7.2. Races will be held in Upper Hudson Bay. The Upper Hudson Bay is a commercial and recreational area; there will be ferries, barges, tugboats and other commercial and recreational vessels transiting the area.
- 7.3. For the first race only on Saturday, the RC will be located onshore at the AC event venue along the North Cove Seawall. For Subsequent races on Saturday and Sunday, the RC will be located on a motor yacht near the Statue of Liberty .

## **8. THE COURSES**

- 8.1 The course to be sailed will be posted by the Race Committee no later than the warning signal.
- 8.2 The courses may be windward-leeward utilizing inflatable drop marks, or preset courses using government marks. The government mark courses and mark descriptions are listed in SI Appendix 2. An example of a windward leeward course is diagramed in SI Appendix 3. For windward-leeward courses, the number of legs to be sailed, the distance and the bearing to the first mark will be posted. For the government marks courses, the Race Committee will post a "G" and a number corresponding to the Course number. Courses will also be announced via VHF radio on channel 69.
- 8.2 It is the intention of the Race Committee to sail the first race on Saturday as a government race starting from the North Cove Seawall. See section 9.2 under marks
- 8.4 For windward-leeward courses, all marks shall be rounded to port.

## **9. MARKS**

- 9.1. For the windward-leeward courses, rounding marks will be yellow inflatable buoys. For the government mark courses, marks will be government aids to navigation buoys whose locations are indicated on the attached course chart.
- 9.2. The starting and finishing mark will be the course mark near the RC boat. (a yellow or yellow/black inflatable buoy) except for the first race on Saturday whereas the starting marks will be two orange tetrahedrons. The yellow start/finish mark may also be the leeward rounding mark.

## **10. THE START**

- 10.1. The starting line will be between a staff displaying an orange flag by the race committee and the course side of the starting mark, except for Saturday's first race whereas the starting line will be between two orange tetrahedrons.
- 10.2. A boat starting later than 5 minutes after her starting signal will be scored DNS. This changes RRS A4 and A5.

## **11. RECALLS**

- 11.1. The race committee may courtesy hail boats identified as on the course side at the start by sail number or boat name on VHF CH 69. Any actions of the RC with respect to such courtesy hails is not a basis for redress. This changes RRS 62.1(a).

## **12. CHANGE OF THE NEXT LEG OF THE COURSE**

- 12.1. To change the next leg of the course, the race committee may lay a new mark (or move the finishing line) and remove the original mark as soon as practicable. If there is a course change that requires a new mark, that new mark will be a yellow & back inflatable ball buoy. When in a subsequent change a new mark is replaced, it will be replaced by an original mark.

## **13. THE FINISH**

- 13.1. The finishing line will be between a staff displaying an orange flag by the RC and the course side of the finishing mark.

## **14. PENALTY SYSTEM**

- 14.1. Rule 44.1 is changed so that the Two-Turns Penalty is replaced by the One-Turn Penalty unless the incident occurs in the Zone in which case the Two-Turn Penalty applies.

## **15. TIME LIMITS**

- 15.1. Time limit for each race will be two hours.
- 15.2. Boats failing to finish within 30 minutes after the first boat sails the course in accordance with RRS 28, and finishes will be scored DNF without a hearing. This changes RRS 35, 63.1, A4 and A5.

## **16. PROTESTS AND REQUESTS FOR REDRESS**

- 16.1. Protest forms are available at the LLM light ship on Saturday and the Floating Classroom at the North Cove on Sunday. Protests and requests for redress or reopening shall be delivered at their respective locations within the appropriate time limit.
- 16.2. Protest hearings will be held after each day of racing, at the LLM lightship on Saturday and Sunday. Parties to a protest should report to the either location for further directions to the protest committee.
- 16.3. It is the responsibility of the parties to ensure that their witnesses are available when called to testify. If witnesses are not in the vicinity of the protest committee area when called, they may not be heard.
- 16.4. Notices of protests by the race committee or protest committee will be posted to inform boats under rule 61.1(b) on the official notice board.
- 16.5. On the last day of the regatta, rules 66, 62.2, and the US SAILING prescription to rule 62.2 are changed such that a request for reopening a hearing or a request for redress based an action or omission of the jury shall be delivered within the protest filing

deadline if the requesting party was informed of the decision the previous day; no later than 30 minutes after the requesting party was informed of the decision on that day; or no later than 30 minutes after a signal to abandon racing is displayed ashore.

- 16.6. Intention to protest for a rule of Part 2 and the boat being protested shall be signaled to the Race Committee on the VHF Channel 69 at the finish of a race, until acknowledged by the Race Committee. This modifies rule 61.1(a).
- 16.7. The protest time limit in rule 61.3 is 30 minutes after the Race Committee Signal Boat docks. Notices will be posted to inform competitors of protest hearings in which they are parties as soon as possible after the protest time limit. Hearings will be held as soon as possible, approximately in the order received. Location and times will be posted.
- 16.8. Boats may not protest other boats for breaches of: retirement from race notification, safety equipment. The penalty for breaking these rules is at the discretion of the Protest Committee and may be less than disqualification. This changes rule 60.1(a).

## **17. SCORING**

- 17.1. The scoring system will be the Low Point System and each boat's regatta score will be the total of that boat's scores in all the races. There will be no excluded races. This changes RRS A2.
- 17.2. One race will constitute a series.

## **18. SAFETY REGULATIONS**

- 18.1. USCG approved personal flotation devices (PFD) shall be worn by all crew aboard at all times.
- 18.2. Any boat withdrawing before the start or retiring from a race shall notify the race committee as soon as possible on VHF channel 69.
- 18.3. Security Zones – The USCG has established a 150-yard security zone around Ellis and Liberty Islands as shown in Appendix 4. Additionally there is a 100-yard security zone around all US Naval or Coast Guard vessels. These security zones are considered obstructions on the racecourse and no boat is allowed to sail inside the security zones. If on station, security Zones are marked with white buoys with orange bands and diamonds.
- 18.4. Weather Protocols – In accordance with the USCG Marine Event Permit, there may be no racing if the wind gusts to speeds greater than 25 knots, there is lightning, thunderstorms or visibility is less than 1 nautical mile. A race may be postponed or abandoned if any of these conditions exist. If a race is abandoned for weather, teams will be notified via VHF Ch 69 and may be directed to proceed to the berthing areas.

## **19. REPLACEMENT OF EQUIPMENT**

- 19.1. Substitution or repair of damaged or lost equipment must comply with or conform to the class rules.

## **20. ADVERTISING**

- 20.1. Pursuant to CR 2.8 and ISAF Regulation 20, ISAF Advertising Code, including ISAF Regulation 20.5.6(a), no advertising shall be permitted on boats.

## **21. HAUL-OUT RESTRICTIONS**

- 21.1. All boats shall be launched by 1700 hours on May 17, 2011 and must remain in the water through the end of the regatta. Boats shall not be hauled out during the regatta except with and according to the terms of prior written permission of the protest committee, after consultation with the J/105 Class Association Fleet 10 Measurer or his designee.

## **22. RADIO COMMUNICATION**

- 22.1. Each boat shall carry a radio capable of transmitting and receiving on VHF channels 9, 13, 16, and 69. Except in an emergency, a boat shall neither make radio transmissions while racing nor receive radio communications not available to all boats. This restriction also applies to mobile telephones. Courtesy broadcasts to the fleet will be on VHF channel 69.
- 22.2. The courtesy broadcast channel may be changed on the water. Multiple courtesy broadcasts on VHF channel 69 stating the change to the new channel will be made prior to the change.
- 22.3. Assistance from Race Committee - The Race Committee may respond to any questions from sailors even after the race has started and any such answers from the race committee will not be considered outside assistance. Any RC answers are not grounds for protest or redress.

## **23. PRIZES**

- 23.1. Regatta prizes will be awarded to the top 3 boats for the J105 class and top 2 boats for the PHRF division.
- 23.2. Prizes will be awarded at the Lightship at Liberty landing Marina, after the conclusion of racing on Sunday, May 19.

Abbreviations used:

AC	Atlantic Cup
CR	Class rules
DNS	Did Not Start
ISAF	International Sailing Federation
LLM	Liberty Landing Marina
PFD	Personal Flotation Device

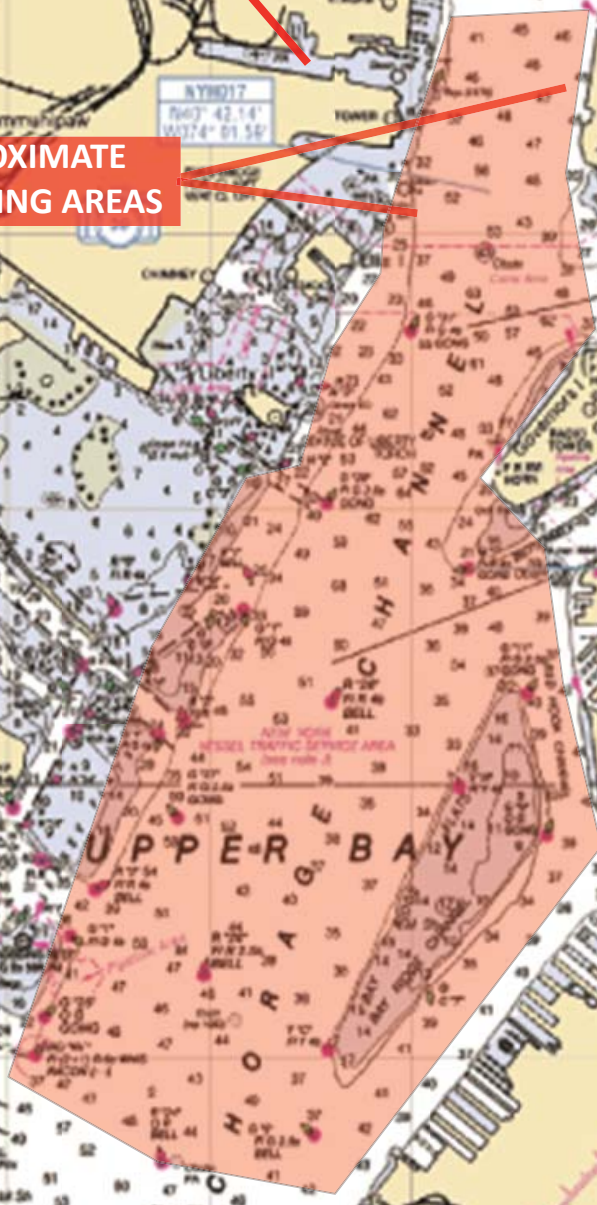
RC	Race Committee
RRS	Racing Rules of Sailing
SI	Sailing Instruction
USCG	United States Coast Guard
WW	The Honorable William Wall (floating clubhouse)

See attached appendices.

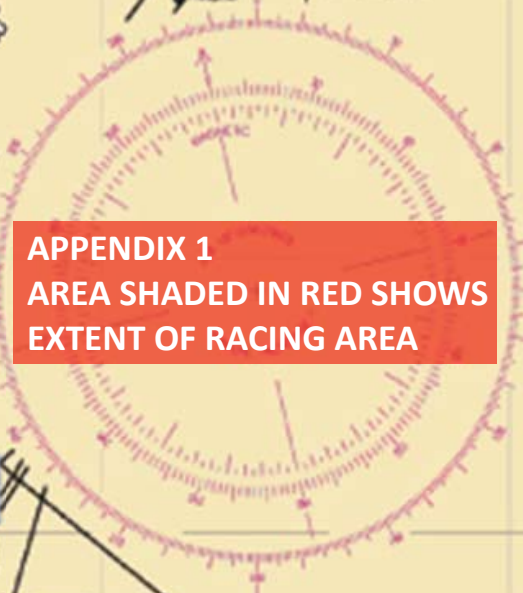
LIBERTY LANDING MARINA

NORTH COVE MARINA

APPROXIMATE STARTING AREAS



APPENDIX 1  
AREA SHADED IN RED SHOWS  
EXTENT OF RACING AREA



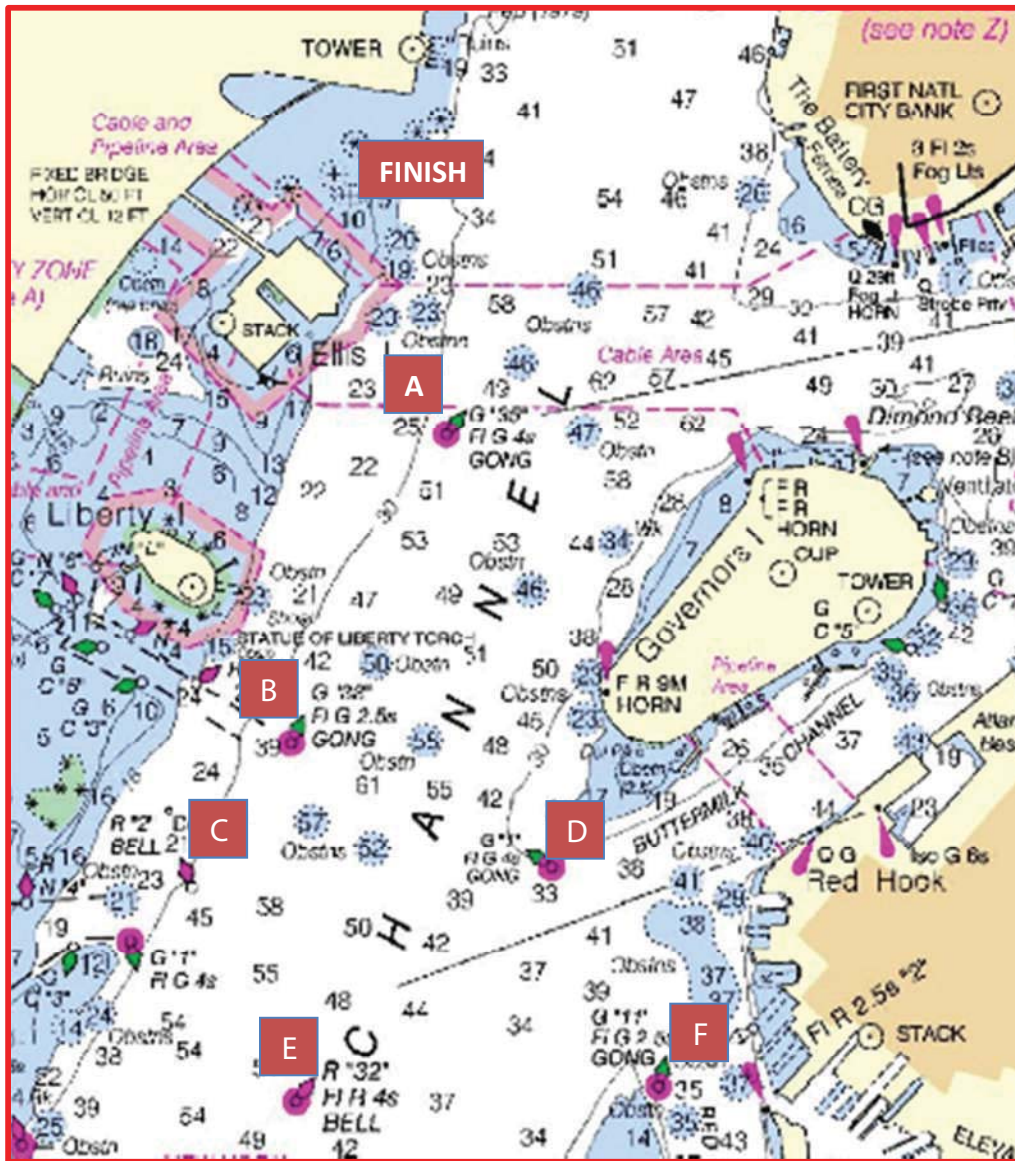
**HORIZONTAL DATUM**  
The horizontal reference datum of this chart is North American Datum of 1983 (NAD 83). For charting purposes it is considered equal to the World Geodetic System 1984 (WGS 84) geographic positions referred to the American Datum of 1983 must be corrected through a 0.224' northward and 1.487' eastward.

**NOTE C**  
A leveling station platform when in normal use, reduces the vertical clearance by 15 feet.

**ACKNOWLEDGEMENT**  
The National Ocean Service acknowledges the exceptional cooperation received from members of United States Power District 4, in providing essential material for revising this chart.  
This nautical chart is published by the Hydrographic Office, United States Coast and Geodetic Survey, Washington, D.C. 20540.  
See notice scale chart for more information.

DEPTH	SOUNDING
0.0	0
0.5	5
1.0	10
1.5	15
2.0	20
2.5	25
3.0	30
3.5	35
4.0	40
4.5	45
5.0	50
5.5	55
6.0	60
6.5	65
7.0	70
7.5	75
8.0	80
8.5	85
9.0	90
9.5	95
10.0	100
10.5	105
11.0	110
11.5	115
12.0	120

Appendix 2 – Government marks course sheet - Manhattan Regatta - 2012



Key to Marks

**Start:**  
Refer to SI's for start location

A - G "35"  
FI G 4s GONG

B - G "33"  
FI G 2.5s GONG

C - R "2"  
BELL

D - G "1"  
FI G 4s GONG

E - R "32"  
FI R 2.5s BELL

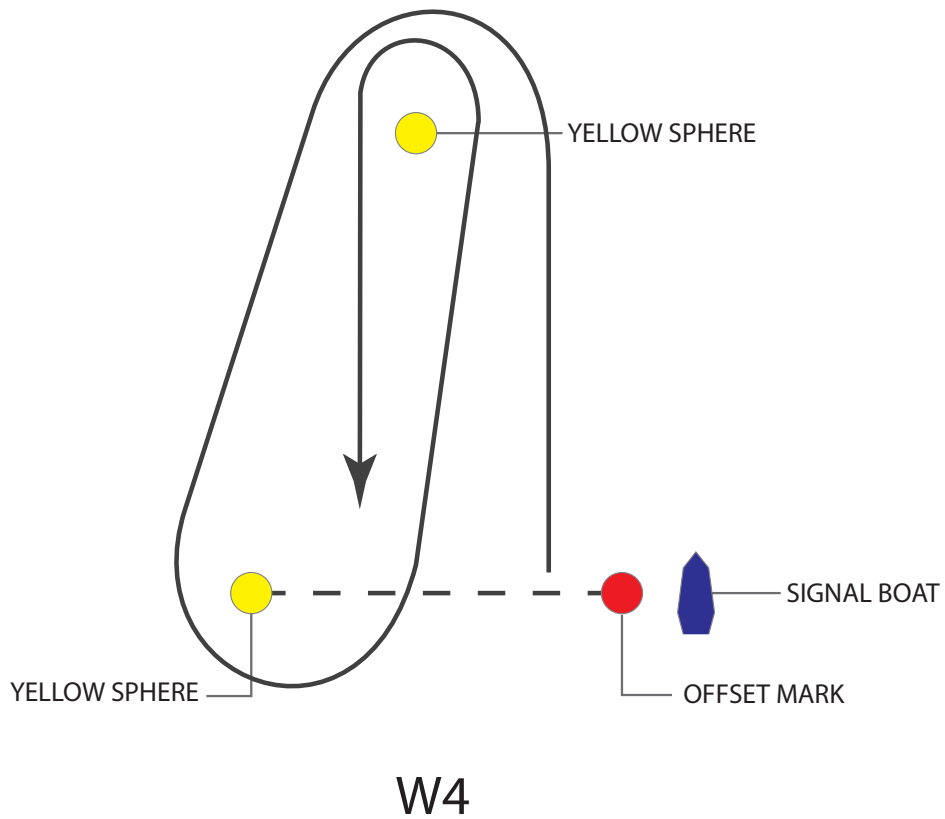
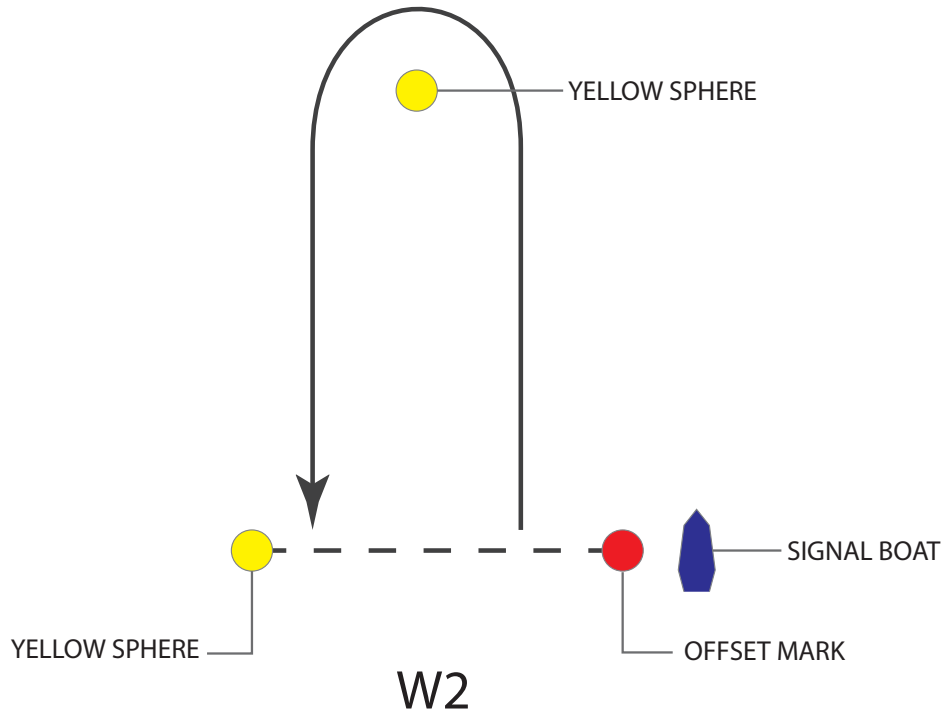
F - G "11"  
FI G 2.5 GONG

**Finish**  
Orange flag on WW  
(Floating Clubhouse)  
and Yellow sphere

Course #	1st mark	2nd mark	3rd mark	4th mark	5th mark	6th mark	Distance (nm)
1	Bp	Finish					2.2
2	Dp	Finish					2.8
3	Bp	Ap	Bp	Finish			3.7
4	Dp	Ap	Dp	Finish			4.6
5	Bp	Ap	Bp	Ap	Bp	Finish	5.0
6	Bp	Fp	Finish				4.1
7	Cp	Dp	Finish				3.7
8	Bp	Fs	Bs	Finish			4.2
9	Cp	Ds	Cs	Finish			4.5
10	Ds	Cp	Dp	Finish			4.5
11	Fs	Bp	Fp	Finish			5.8
12	Bp	Fp	Bp	Fp	Finish		6.0
13	Cp	Dp	Cp	Dp	Finish		5.5
14	Ds	Cs	Ds	Cs	Finish		5.4
15	Fs	Bs	Fs	Bs	Finish		6.0
16	Cp	Dp	Ap	Bp	Finish		5.0
17	Ds	Cs	As	Bs	Finish		5.1
18	Cp	Dp	Ap	Cp	Dp	Finish	6.5
19	Ds	Cs	As	Ds	Cs	Finish	6.5
20	Special Course announced by Race Committee via VHF radio						



### Appendix 3 – Windward/Leeward Courses - Manhattan Regatta 2012



NOTE: Signal boat may be the WW (floating clubhouse) or motor yacht.

Appendix 4 – Security Zones around Statue of Liberty and Ellis Island

