



INTERNATIONAL ROLEX REGATTA 2013



SAILING INSTRUCTIONS AND APPENDIX A

ST. THOMAS, U.S. VIRGIN ISLANDS

MARCH 22 - 24, 2013





► 1 RULES

- 1.1 The regatta will be governed by:
- The rules, as defined in The Racing Rules of Sailing (RRS)
 - Current ISAF Offshore Special Regulations Appendix J, Category 5
 - The Caribbean Sailing Association (CSA) Rule: www.caribbean-sailing.com
 - The 2013 IRC Rule, Parts A, B & C. IRC Rules 21.1.5 (d), (e) and (f) are changed as follows: During the regatta, the sails carried (including mainsails and spinnakers) may vary from day to day, but shall remain the same for each individual race day, including days with multiple races and in the case of damage to sails. Competitors may change mainsails or substitute spinnakers on consecutive days as long as all such sails are within the dimensions declared on their IRC certificate. The race day begins when the boat leaves the dock for the first time that day.
 - Multihull Advisory Committee for Multihull Classes
 - Portsmouth Yardstick Rule for Beach Cats.
- 1.2 For all classes, except Beach Cats, the minimum number of crew is four. For Beach Cats, the minimum number of crew is two. For yachts carrying a Regatta approved member of the press, this member of the press will not be included in the crew number, provided he/she does not contribute in any way or perform any tasks.
- 1.3 All crew members are required to sign and every boat shall file the Disclaimer and Waiver of media Rights form provided at Registration.

► 2 NOTICES TO COMPETITORS

Notices to competitors will be posted on the Official Notice Board at the St. Thomas Yacht Club and posted on the Regatta Entry website www.yachtscoreing.com

► 3 CHANGES TO SAILING INSTRUCTIONS

Any Amendments to the Sailing Instructions will be posted before 0830 hours on the day they will take effect. Any change to the schedule of races will be posted by 1800 hours the day before it will take effect.

► 4 SIGNALS MADE ASHORE

Signals made ashore will be displayed on the St. Thomas Yacht Club flagpole. If flag AP is displayed, the first warning signal will be made no fewer than 60 minutes after lowering AP. This changes Race Signals.

► 5 SCHEDULE OF RACES

- 5.1 Races are scheduled on March 22, 23 and 24, 2013. The scheduled time for the first warning signal each day is 1100 hours.
- 5.2 Classes sailing and their assigned race area will be posted by 1800 hours the day before they will take effect.
- 5.3 Day 1, Friday, March 22:
All classes are scheduled to sail a minimum of two races.
Race 1 will start in the St. James Starting Area and finish in Charlotte Amalie Harbor.
Race 2 will start in Charlotte Amalie Harbor and finish outside Christmas Cove. Some classes may finish NW of

Packet Rock Buoy RN "2". Classes finishing near Packet Rock Buoy will start Race 3 in the same location of the finish of Race 2 and finish off Christmas Cove.

5.4 Day 2, Saturday March 23:

IC24 and Beach Cat classes may sail as many as 8 W/L races in Great Bay. Cruising Classes will sail up to 2 races from the selection of the St. James or Dog Island and Buck Island courses.

All other classes will sail up to 3 races from the selection of St. James, Dog Island or distance race courses on the south side of St. John.

5.5 Day 3, Sunday March 24:

IC24s are scheduled to sail up to 6 W/L races in Jersey Bay. All other classes will sail up to 2 races starting at the St. James starting area and consisting of a selection of St. James, Dog Island and Pillsbury Sound courses.

► 6 YACHT IDENTIFICATION

6.1 Class flags will be colored flags provided by the OA. Class assignments and flags will be posted on the Official Notice Board. While racing, class flags shall be conspicuously displayed from the backstay no less the 2 meters above deck. For boats without backstays, class flags shall be displayed from the starboard shroud or mainsail leech.

6.2 Rolex flags will be provided and shall be flown above the class flag at all times during the regatta.

6.3 For some classes bow numbers will be issued at Registration. These shall be affixed to both the port and starboard sides of the bow with the leading edge of the forward number 20 inches aft of the bow stem and 3 inches below the



deck. The aft number will be 3 inches aft of the forward number.

6.4 Rolex event stickers will be provided and shall be displayed during the Regatta, 6 inches aft of bow numbers and 3 inches below the deck, if applicable, or otherwise, in place of the bow numbers. Rolex banners will be available. Competitors are encouraged to display these banners in an appropriate manner when not racing.

► **7 RACING AREAS- See Appendix A**

► **8 COURSES**

8.1 See Appendix A. Course graphics are not intended to be used for navigation. All distances and mark locations are approximate. Competitors assume absolute responsibility for identifying and avoiding navigational hazards.

8.2 Courses to be sailed will be displayed from the RC Signal Boat and announced on the designated VHF Channel.

8.3 Unless starting or finishing, boats shall not cross the start or finish line while racing.

8.4 Restricted areas: In Charlotte Amalie Harbor, Cruise ships and the cruise ship dock inclusive of its moorings are restricted areas and shall be avoided at all times.

► **9 MARKS**

9.1 Marks will be a combination of islands, government buoys and inflatable marks. Marks on W/L courses will be Inflatable marks. Change marks may be a different color than the original mark.

9.2 The Race Committee Signal Boat

may be protected by a nearby inflatable mark, which shall rank as a starting mark. Boats shall not pass between this limit mark and the Signal Boat. The area between the limit mark and the committee boat does not rank as an obstruction for the purposes of RRS 18, 19, & 20.

► **10 CHECK-IN**

Prior to the first warning signal each day, boats shall sail or motor by the stern of the RC Signal Boat and check-in by announcing their sail or bow number.

► **11 THE START**

11.1 Races will be started in accordance with RRS 26 except that IC24s and other one design classes may be started using the Sound-Signal Starting System described in Appendix A.

11.2 The starting line will be between a staff displacing an orange flag on the RC Signal Boat and a nearby inflatable mark.

11.3 A boat whose warning signal has not been made, shall avoid the starting area.

11.4 Any boat not starting within 5 minutes of her starting signal will be scored DNS. This changes RRS A4 and A5.

11.5 In the event of an Individual Recall, the Race Committee will attempt to notify boat(s) that are OCS via the designated VHF Channel. Failure of the Race Committee to make such broadcasts, or the length of time it takes, will not be grounds for redress. This changes RRS 29.1 and 62.1(a).

► **12 THE FINISH**

The Finish Line will be between a staff displaying a blue flag and a nearby inflatable mark.

► **13 PENALTY SYSTEMS**

13.1 Except as changed by instruction 13.1 or 13.2 a boat that may have broken a rule of Part 2 while racing may take a one turn penalty at the time of the incident in compliance with RRS 44.2, or by taking a 20% Scoring Penalty in compliance with RRS 44.3. The 20% penalty shall not be less than two (2) places. All boats that have taken a Scoring Penalty in accordance with rule 44.3 shall submit a written declaration on a form available at the Jury Desk, prior to the end of Protest Time. Submitting a written declaration shall satisfy the requirement of rule 44.3(b) to inform the Race Committee at the finishing line. This changes rule 44.3 Scoring Penalty.

13.2 If a boat breaks a rule of Part 2 within the three-length zone of any rounding or passing mark, her penalty shall be a Two-Turns Penalty in compliance with RRS 44.2.

13.3 RRS 44.1 is changed to permit a boat that has not taken a penalty in compliance with sailing instruction 14.1 or 14.2 to take a Scoring Penalty for a breach of a rule of Part 2 prior to the protest hearing. This Scoring Penalty shall be 40% of the number of boats entered (rounding 0.5 upward) in her class, but shall not be less than 4 places, added to her actual finish position. However, she shall not be scored worse than DNF.



► **14 TIME LIMITS**

The time limit on Sunday is 1600 hours.

► **15 PROTESTS AND REQUESTS FOR REDRESS**

15.1 Protest forms are available at the Jury Desk outside the Jury Room located adjacent to the St. Thomas Yacht Club tennis courts.

15.2 For each class, the protest time limit is sixty (60) minutes after the respective RC Signal Boat has reached its dock or mooring.

15.3 Protests will be heard as soon as possible after each days racing, in the approximate order of receipt.

15.4 Measurement disputes shall be filed with the International Jury by the end of Protest Time on the first day of racing.

15.5 For protests involving an alleged breach of a rule of Part 2, a short arbitration hearing will be offered prior to a protest hearing.

15.4 One representative from each boat will meet with an Arbitrator unless the protestor requests that the protest be withdrawn. No witnesses will be allowed. Protests not resolved by arbitration will be forwarded to the jury. A party who accepts the Arbitrator's decision that they broke a Part 2 rule will be assessed a scoring penalty per RRS 44.3 © of 40%, but not fewer than four (4) places, yet not greater than DNF.

15.5 The arbitrator will not be a member of the jury that hears the protest but will be permitted to observe the testimony given to the jury and offer testimony. This changes RRS 63.3(a).

15.6 For the purposes of RRS N1.4 (b) the time limit for a hearing by the jury composed in compliance with RRS N1.1, N1.2 and N1.3 is thirty (30) minutes after the decision is announced.

15.7 Decisions of the International Jury will be final as per RRS 70.5.

► **16 SCORING**

16.1 Two (2) races are required to be completed to constitute a series.

16.2 A boat's series score will be the sum of all her race scores, without a discard.

► **17 SAFETY REGULATIONS**

17.1 See NOR Appendix A

17.2 A boat that retires from a race shall notify the Race Committee as soon as possible.

► **18 CREW SUBSTITUTION**

Crew substitutions shall be submitted to the Race Committee Office at the St. Thomas Yacht Club, in writing, with updated Disclaimer and Media Release form(s).

► **19 EQUIPMENT MEASUREMENT CHECKS**

A boat and the boat's equipment may be inspected any time by the OA for compliance with Class or Measurement Rules and the Sailing Instructions.

► **20 ADVERTISING**

20.1 Advertising is allowed in accordance with ISAF Regulation 20. Rolex's participation enhances the event for all competitors. Competitors are requested to respect brand exclusivity

of the Title Sponsor.

20.2 See SI 6.2 and 6.4 for event advertising requirements

► **21 RADIO COMMUNICATION**

21.1 Race Day Friday: All classes will use VHF channel 72 for Race 1 and the start of Race 2. IC24s will switch to VHF channel 71 after the start of Race 2. All other classes will monitor VHF 72.

Race Days Saturday and Sunday: Classes sailing in Great Bay or Jersey Bay will monitor VHF channel 71. All other classes should monitor VHF channel 72.

21.2 Except in an emergency, a boat shall neither make radio transmissions while racing, nor receive radio communications not available to other boats. This restriction also applies to mobile telephones.

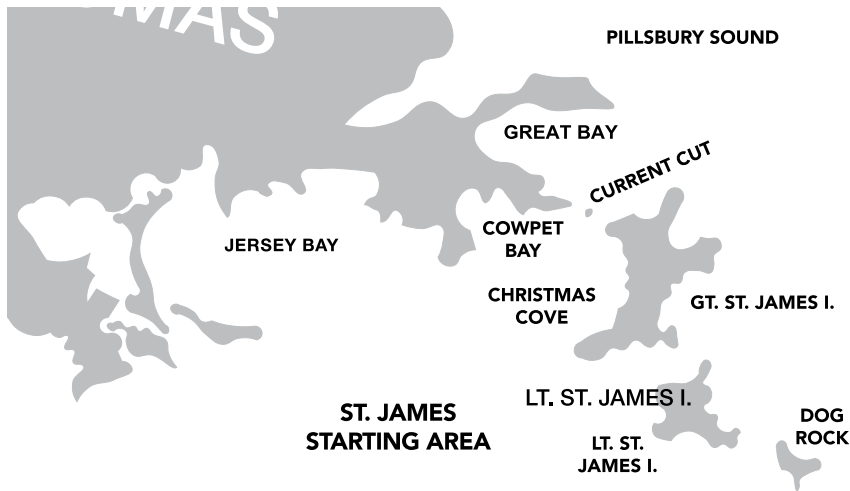
► **22 PRIZES**

22.1 Rolex timepieces will be awarded to the winners of some classes. The eligible classes will be posted prior to the start of racing.

22.2 Prizes will be awarded for 1st, 2nd and 3rd places in each class.

22.3 All prizes will be awarded at the awards ceremony at the St. Thomas Yacht Club commencing at 1800 hours on Sunday March 24, 2013.

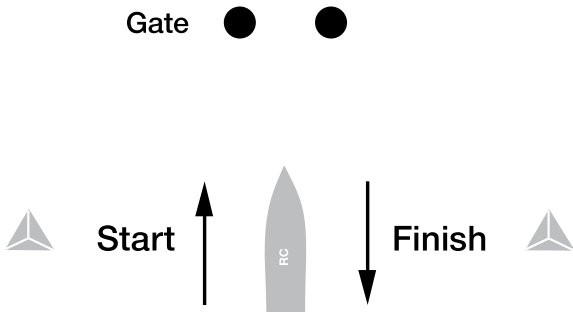
APPENDIX A



► **WINDWARD/LEEWARD (W/L) COURSE DIAGRAMS**

- Course 2: Start, mark 1, offset, Finish
- Course 2A: Start, mark 1A, offset, Finish
- Course 4: Start, mark 1, offset, Gate, mark 1, offset, Finish
- Course 4A: Start, mark 1A, offset, Gate, mark 1A, offset, Finish
- Course 6: Start, mark 1, offset, Gate, mark 1, offset, Gate, mark 1, offset, Finish
- Course 6A: Start, mark 1A, offset, Gate, mark 1A, offset, Gate, mark 1A, offset, Finish

► The RANGE BEARING, and MARK DESIGNATION to the appropriate weather mark will be displayed from the Race Committee Signal Boat and/or announced on VHF.

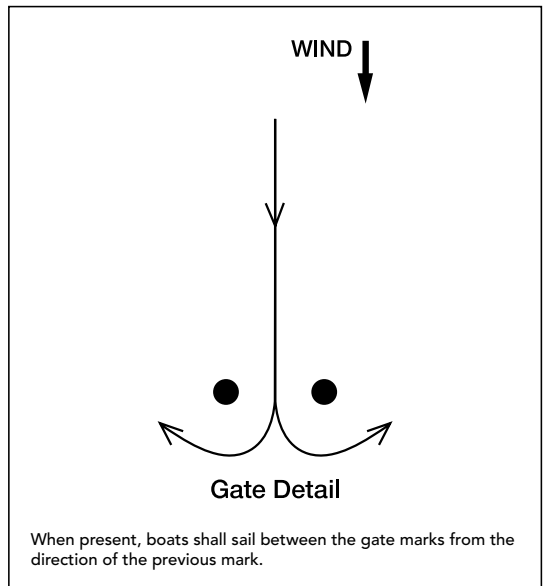


► **SOUND-SIGNAL STARTING SYSTEM**

1. Course and postponement signals may be made orally.
2. Audible signals shall govern, even when supplemental visual signals are also used.
3. The starting sequence shall consist of the following sound signals made at the indicated times:

Signal	Sound	Time before start
Warning	3 long	3 minutes
Preparatory	2 long	2 minutes
	1 long, 3 short	1 minute, 30 seconds
	1 long	1 minute
	3 short	30 seconds
	2 short	20 seconds
	1 short	10 seconds
	1 short	5 seconds
	1 short	4 seconds
	1 short	3 seconds
	1 short	2 seconds
	1 short	1 second
Starting	1 long	0

4. Signals shall be timed from their commencement.
5. A series of short signals may be made before the sequence begins in order to attract attention.
6. Individual recalls shall be signalled by the hail of the sail number (or some other clearly distinguishing feature) of each recalled boat. Flag X need not be displayed.
7. Failure of a competitor to hear an adequate course, postponement, starting sequence or recall signal shall not be grounds for redress.



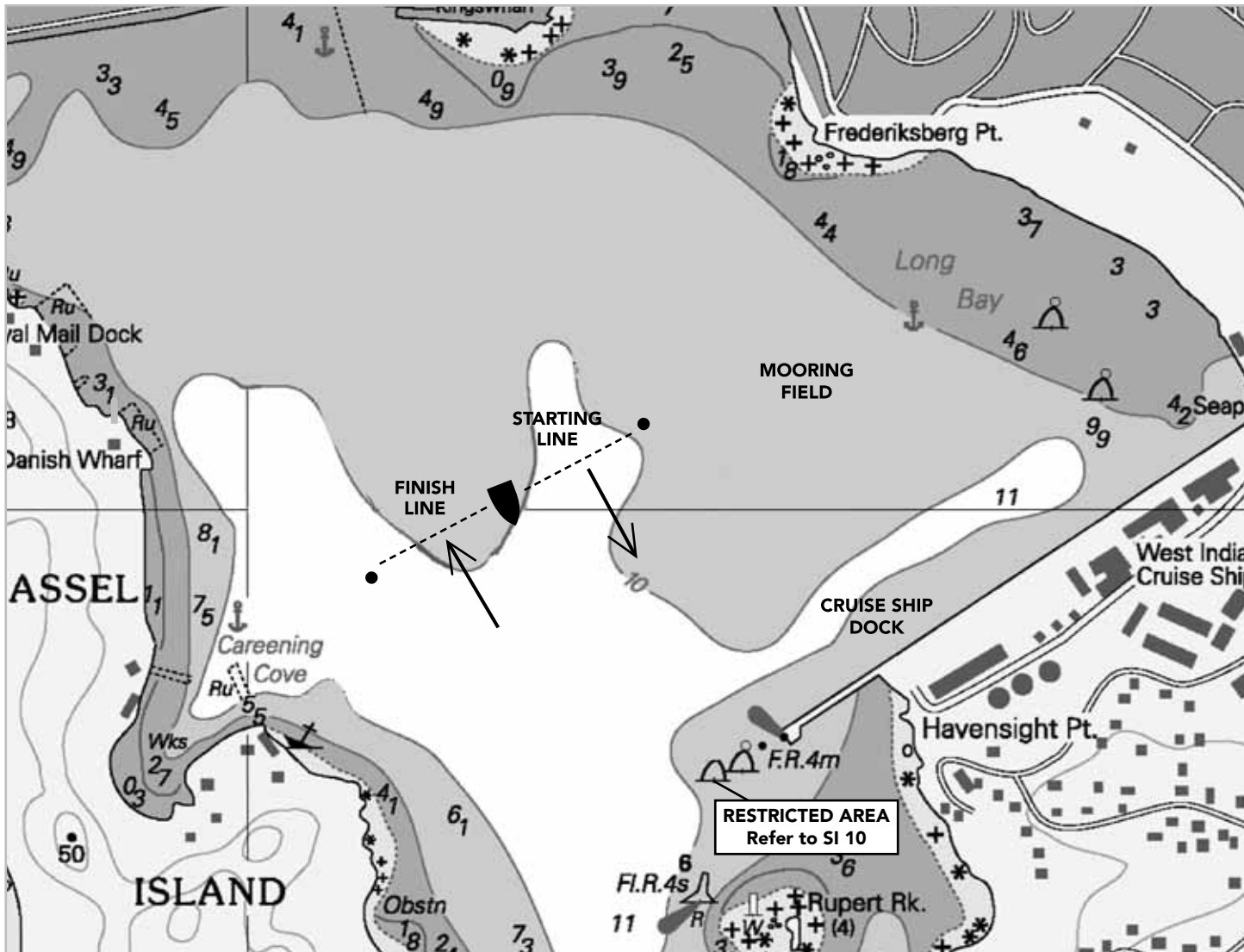
► **COURSE MARKS**

(All mark positions and distances are approximate)

MARK NAME	LATITUDE	LONGITUDE	MARK NAME	LATITUDE	LONGITUDE
Coculus Mark	18.17.72° N	64.54.43° W	Weather Mark	For course EH-1 will be approximately 3.0nm to windward of Coculus Mark	
Stragglers Mark	18.18.10° N	64.50.40° W	Leeward Mark	For course SJ-2 will be approximately 0.3nm to windward of the Start/Finish Line	
Yeoman Mark	18. 18.15° N	64. 49.2° W	Reef Bay North Mark (RBN)	18. 19.10	64. 45.0
Dog Rock Mark	18. 17.63° N	64. 48.6° W	Reef Bay South Mark (RBS)	18.17.80	64. 45.0
Turtle Rock Mark	18.21.15° N	64.51.21° W			
Maria Bluff Mark	18.18.71° N	64.47.73° W			
Shark Island	18.20.40° N	64.50.34° W			
Flamingo Mark	Flamingo mark should be set approx. 1.5 nm to leeward of WR1. See NH-1, NH-2, NC-1.				

NOTE: In all course diagrams, "Mark" indicates an inflatable Rolex tetrahedron; Mark names do not appear on the inflatable. "Buoy" refers to a government buoy. Consult a navigational chart for their latitude/longitude.

► **CHARLOTTE AMALIE HARBOR DETAIL** - Locations are approximate and are subject to adjustments as required for weather, obstructions, etc.



► **SH-1 SOUTH HARBOR COURSE 1**

(16 nm)

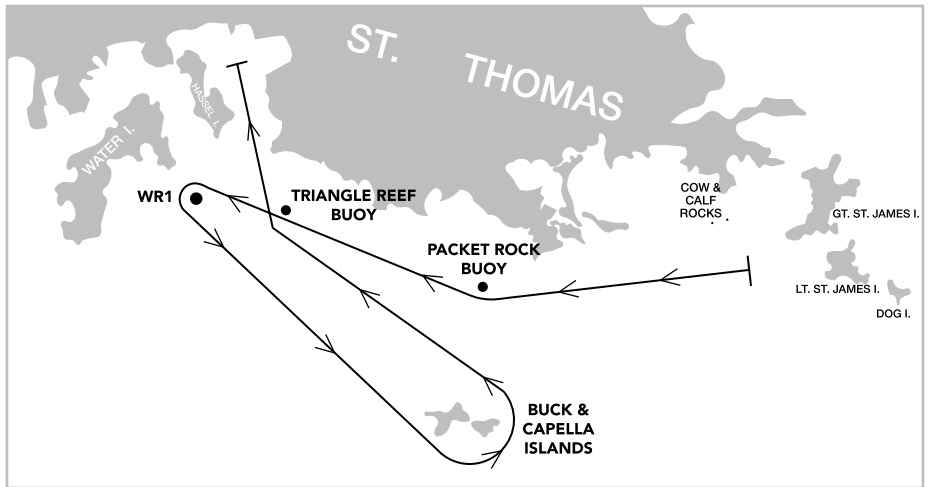
St. James starting area.

From the start proceed to Packet Rock and Triangle Reef buoys, leaving both to Starboard.

Proceed to WR1 buoy, leaving it to Port.

Proceed to Buck & Capella Islands, leaving both to Port.

Leaving Triangle Reef buoy and Packet Rock buoy to Starboard, proceed to the finish in Charlotte Amalie Harbor.



► **SH-2 SOUTH HARBOR COURSE 2**

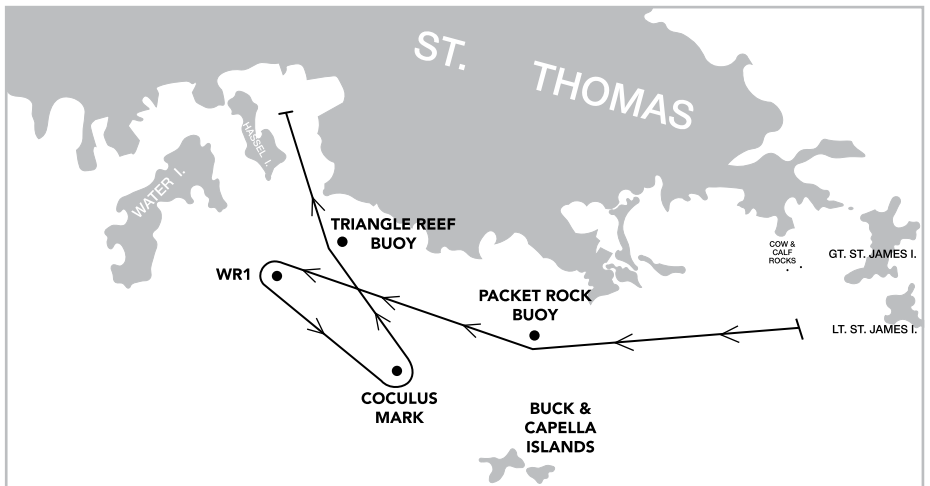
(11nm)

St. James starting area.

From the start, leave Packet Rock and Triangle Reef buoys to starboard, proceed to WR1 buoy leaving it to Port.

Proceed to Coculus Mark leaving it to Port.

Leaving Triangle Reef buoy to Starboard, proceed to finish in Charlotte Amalie Harbor.

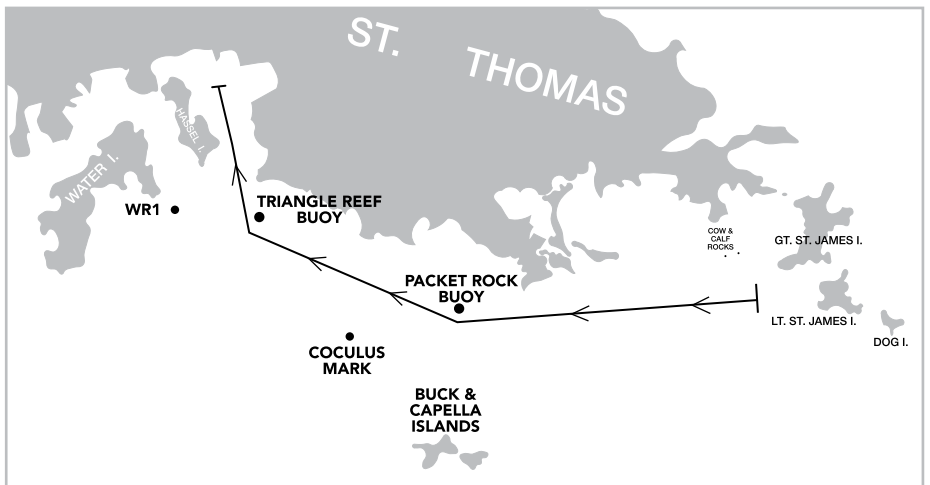


► **SH-3 SOUTH HARBOR COURSE 3**

(6nm)

St. James starting area.

From the start, Leave Packet Rock buoy and Triangle Reef buoy to Starboard, proceed to finish in Charlotte Amalie Harbor.

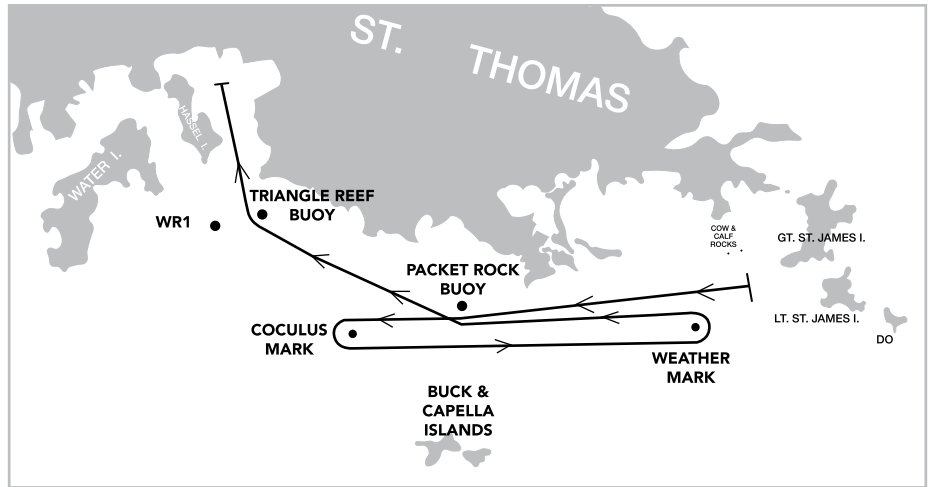


► **EH-1 EAST HARBOR COURSE 1**

(14nm)

St. James starting area.

From start, leaving Packet Rock Buoy to starboard, proceed to Cocolus Mark, leaving it to Port. Proceed to Weather Mark, leaving it to port. Leaving Packet Rock Buoy and Triangle Reef Buoy to starboard, proceed to finish in Charlotte Amalie Harbor.

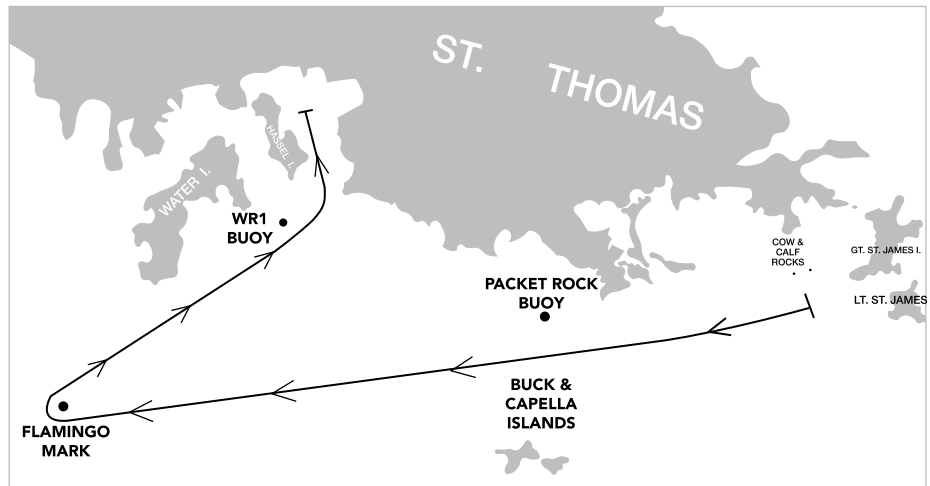


► **NH-1 NORTH HARBOR COURSE 1**

(11nm)

St. James starting area.

From the start leave Packet Rock buoy to Starboard, proceed to Flamingo Mark leaving it to Starboard. Leaving WR1 buoy to Port, proceed to finish in Charlotte Amalie Harbor.

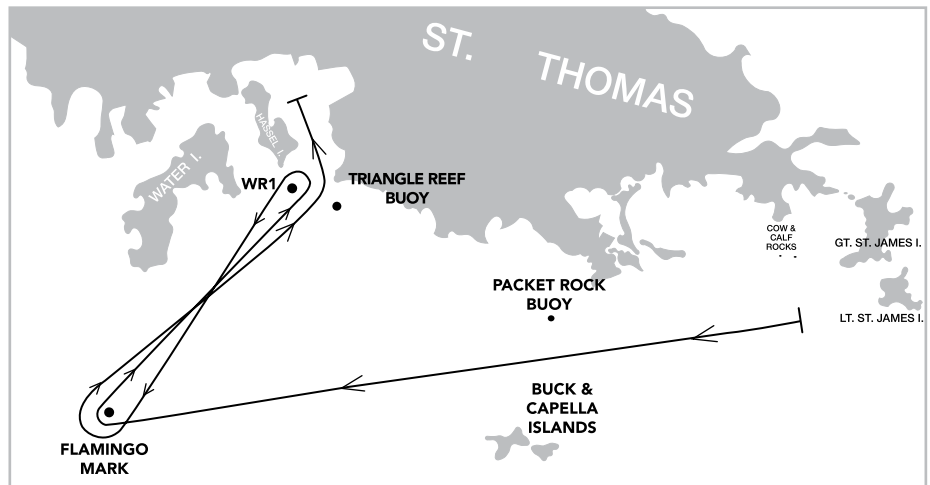


► **NH-2 NORTH HARBOR COURSE 2**

(16 nm)

St. James starting area.

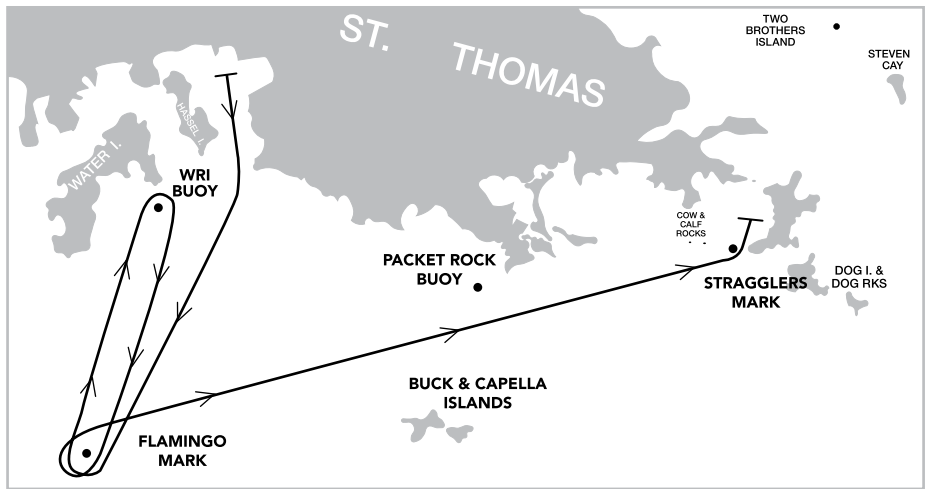
From the start leave Packet Rock buoy to Starboard, proceed to Flamingo mark leaving it to Starboard. Proceed to WR1 buoy, leaving it to Port. Proceed to Flamingo Mark, leaving it to Starboard. Leaving WR1 buoy to Port, proceed to finish in Charlotte Amalie Harbor.



► **NC-1 NORTH COWPET COURSE 1**

(16 nm)

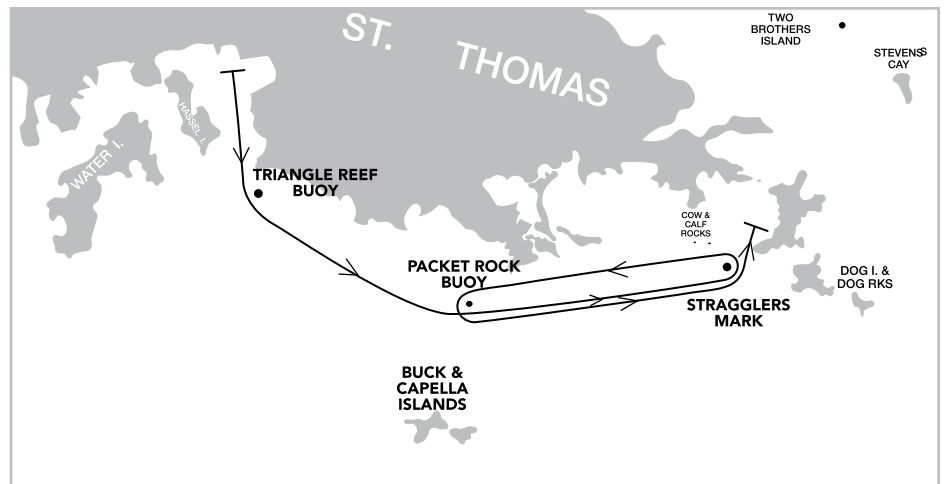
Charlotte Amalie starting area,
From the start proceed to Flamingo Mark to Starboard, then WRI Buoy to starboard then Flamingo Mark to Starboard, then leaving Stragglers Mark to Port, to finish off Christmas Cove.



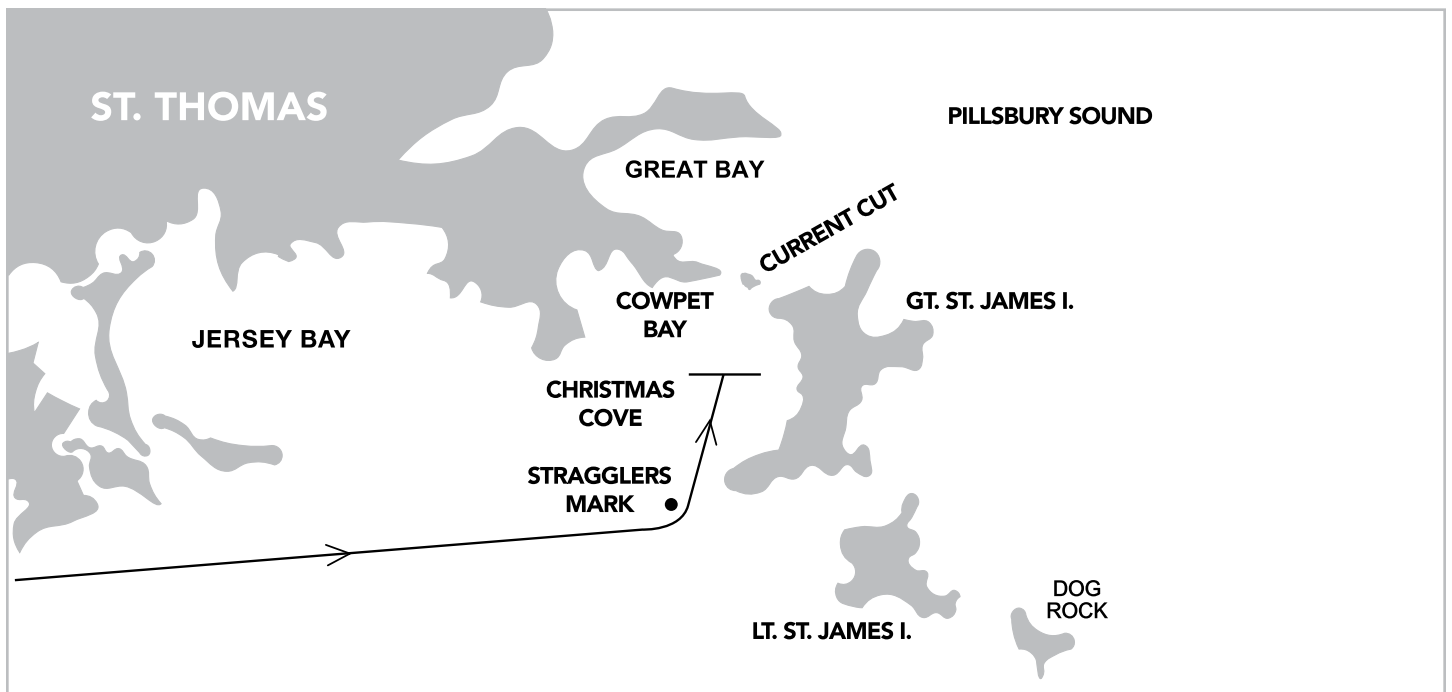
► **EC-1 EAST COWPET COURSE 1**

(13 nm)

Charlotte Amalie Harbor starting area.
From the Start proceed to Triangle Reef buoy and Packet Rock buoy to Port, proceed to Stragglers Mark, leaving it to Port. Proceed to Packet Rock buoy, leaving it to Port. Proceed to Stragglers Mark, leaving it to Port. Proceed to finish off Christmas Cove.



FINISH DETAIL FOR BUCK ISLAND, COWPET AND PR-3



► **SC-1 SOUTH COWPET COURSE 1**

(18 nm)

Charlotte Amalie Harbor starting area.

From the start proceed to Triangle Reef buoy to Port, proceed to Buck & Capella Islands, leaving them to Starboard.

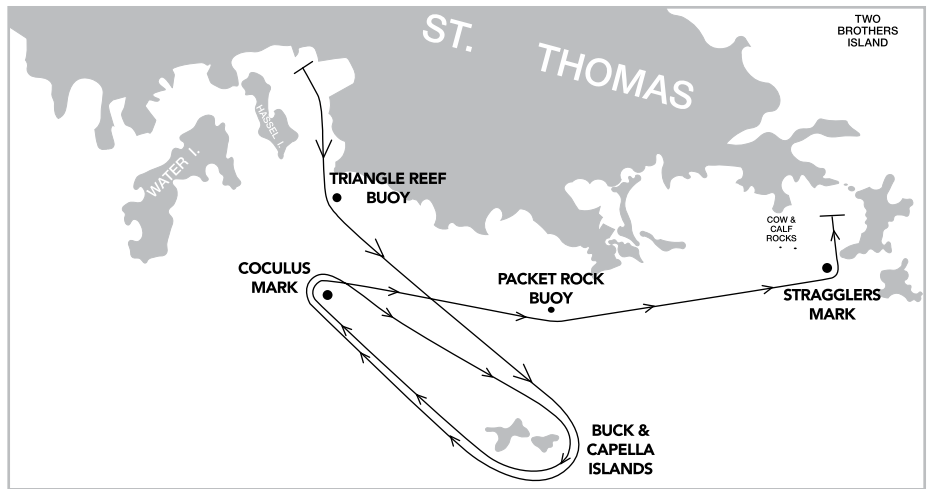
Proceed to Coculus Mark, leaving it to Starboard.

Return to Buck & Capella Islands, leaving them to Starboard.

Return to Coculus Mark leaving it to Starboard.

Leaving Packet Rock buoy to port, proceed to Stragglers Mark, leaving it to Port.

Proceed to the Finish off Christmas Cove



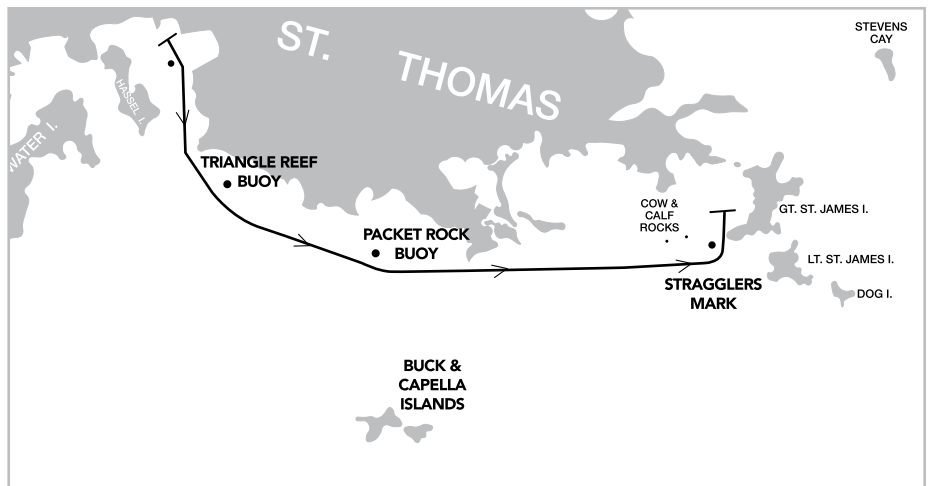
► **SC-2 SOUTH COWPET COURSE 2**

(6 nm)

Charlotte Amalie Harbor starting area

From the start proceed to Triangle Reef buoy and Packet Rock buoy to Port proceed to Stragglers Mark, leaving it to Port.

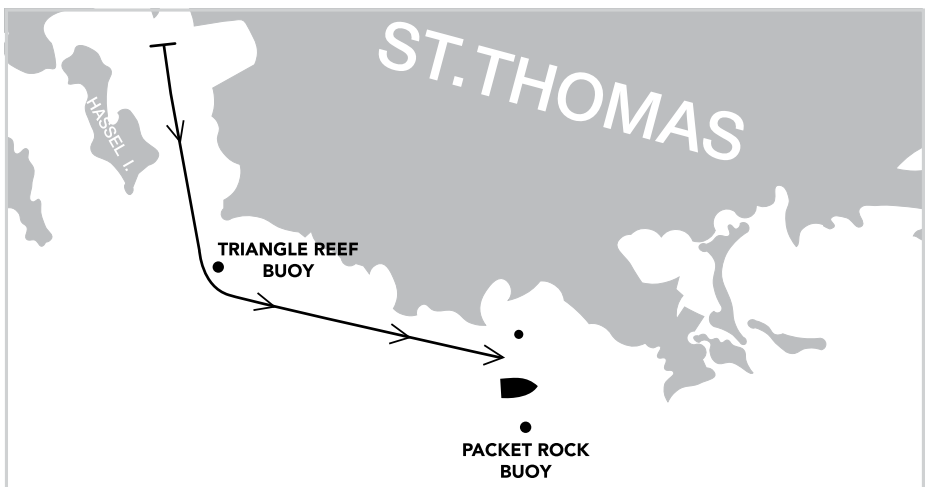
Proceed to Finish off Christmas Cove.



► **PR-1 PACKET ROCK COURSE 1**

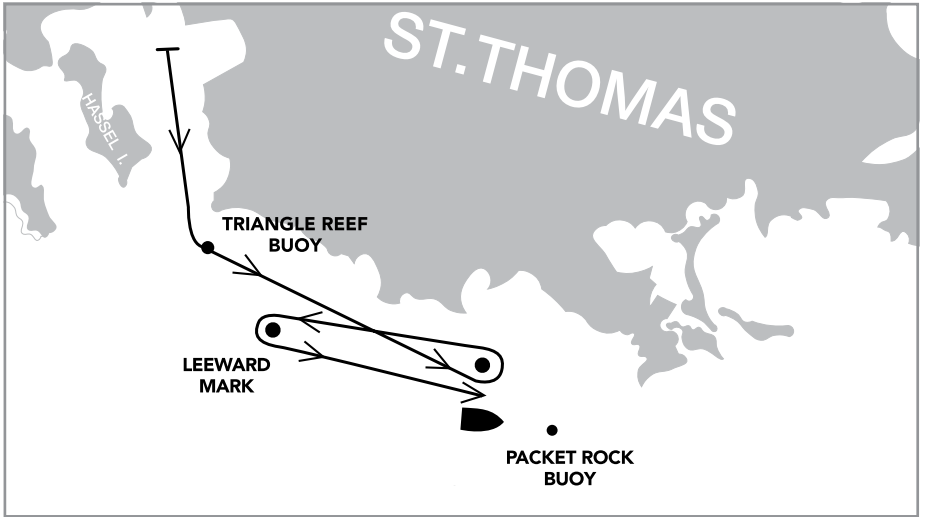
Charlotte Amalie Harbor starting area

From the start, proceed to Triangle Reef buoy, leaving it to Port. Proceed to finish at Signal Boat located to the north-west of Packet Rock Buoy RN "2". Finish between staff displaying a Blue Flag on the Signal Boat and a nearby inflatable mark.



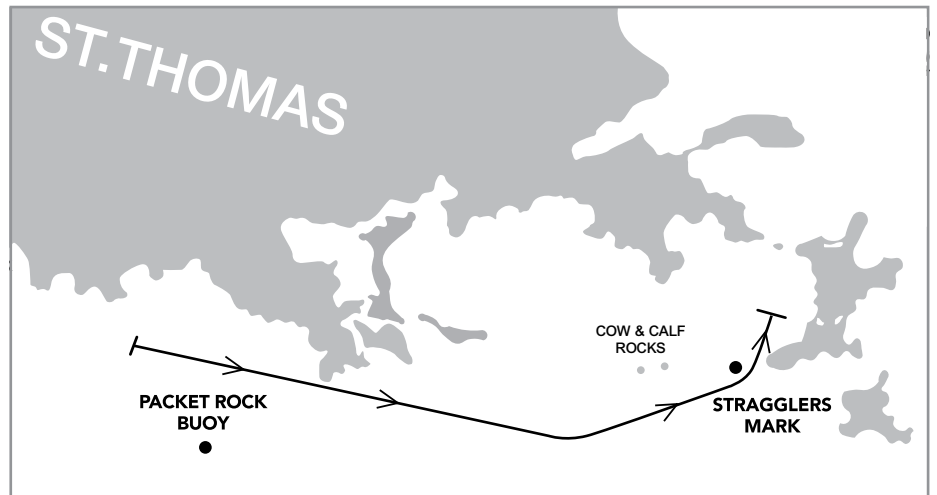
► **PR-2 PACKET ROCK COURSE 2**

Charlotte Amalie Harbor starting area
From the start, proceed to Triangle Reef buoy, leaving it to Port.
Proceed to Weather Mark (which is the Finish Line Pin), leaving it to Port.
Proceed to Leeward Mark, aprox. 0.5nm to leeward of Weather Mark.
Proceed to finish at Signal Boat located to the north-west of Packet Rock Buoy RN "2"
Finish between staff displaying a Blue Flag on the Signal Boat and a nearby inflatable mark.

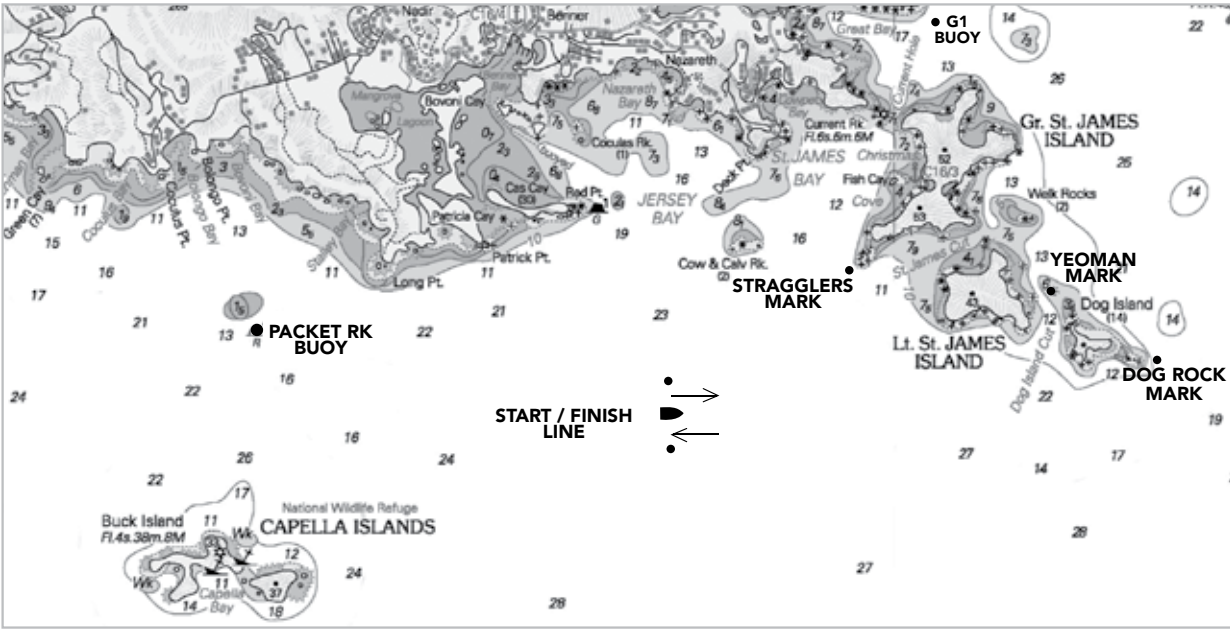


► **PR-3 PACKET ROCK COURSE 3**

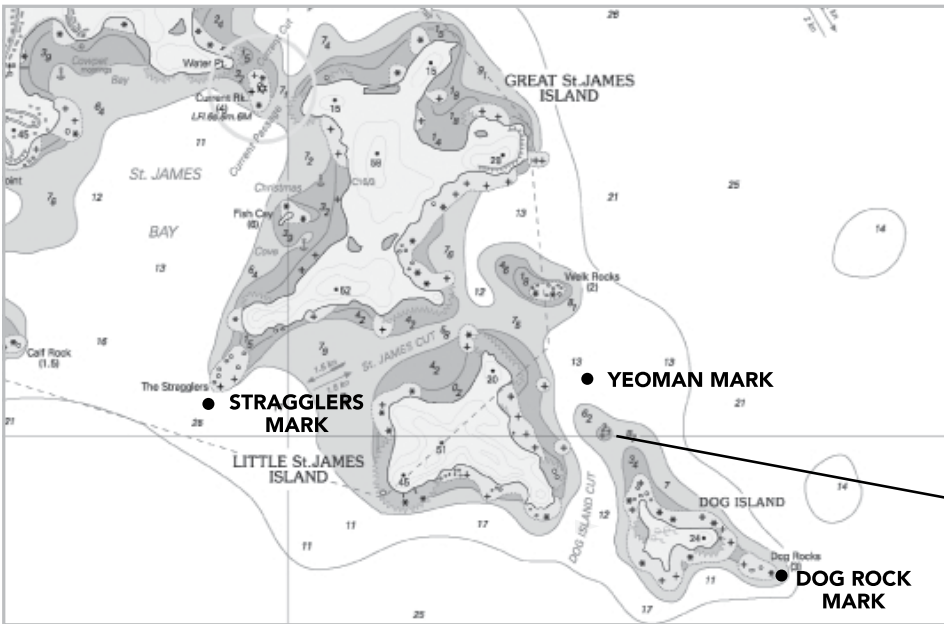
Packet Rock Start Area
Start between staff displaying an Orange Flag on the Signal Boat and a nearby inflatable mark.
Leaving Cow & Calf Rocks to Port, proceed to Stragglers Mark leaving it to Port.
Proceed to finish off Christmas Cove.



▶ **DOG ISLAND DETAIL A**



▶ **DOG ISLAND DETAIL B**



NOTE: Submerged rock may be identified by a set of small floats. These floats shall not be relied upon for navigation.

► **D-1 DOG ISLAND COURSE 1**

(aprox. 10nm)

St. James Starting Area.

From the start proceed thru Dog Island Cut.

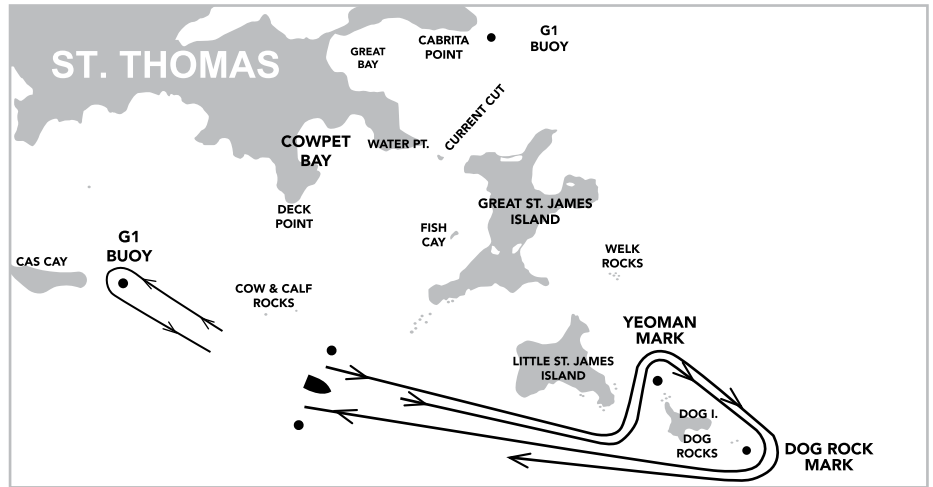
Leave Yeoman Mark to Starboard, leave Dog Rock Mark to Starboard.

Proceed to G1 Buoy leaving it to Port.

Proceed thru Dog Island Cut.

Leave Yeoman Mark to Starboard, leave Dog Rock Mark to Starboard.

Proceed to Finish.



► **D-2 DOG ISLAND COURSE 2**

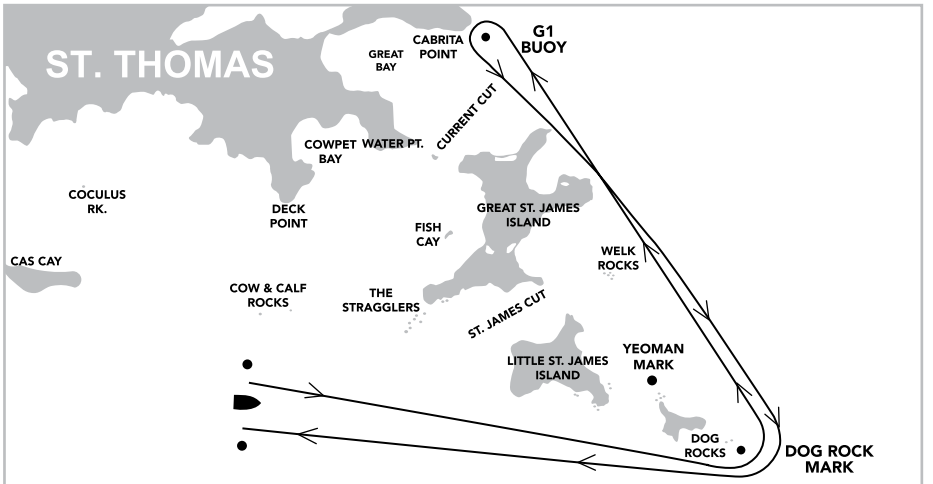
(aprox. 7.5nm)

St. James Starting Area

From the Start, proceed to Dog Rock Mark, leaving it to Port.

Proceed to G1 (Green Can off Cabrita Point) leaving it to Port.

Leaving Dog Rock Mark to Starboard, proceed to Finish.



► **SJ-1 ST. JAMES COURSE 1**

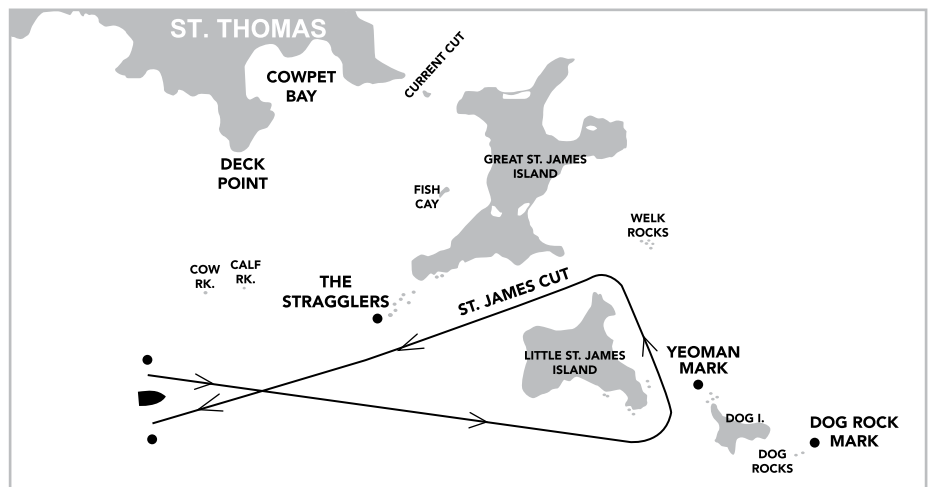
(aprox. 3.5 nm)

St. James Starting Area

From the start, proceed thru Dog Island Cut leaving Yeoman Mark to Starboard.

Proceed thru St. James Cut.

Proceed to finish.



► **SJ-2 ST. JAMES COURSE 2**

(aprox. 7 nm)

St. James starting area.

From the Start proceed thru Dog Island Cut, leaving Yeoman Mark to Starboard.

Proceed thru St. James Cut.

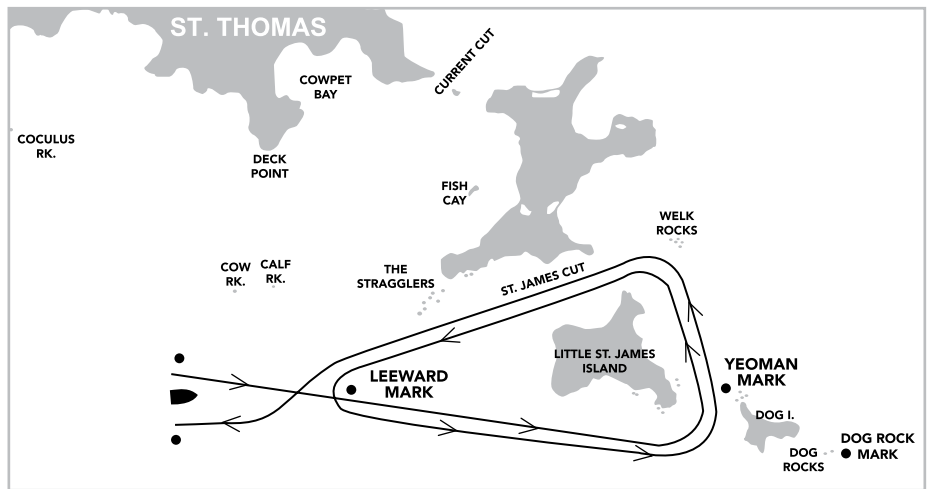
Proceed to Leeward Mark leaving it to

Port. Proceed thru Dog Island Cut,

eaving Yoeman Mark to Starboard.

Proceed thru St. James Cut.

Proceed to finish.



► **BI-1 BUCK ISLAND COURSE 1**

(18.5 nm)

St. James Starting Area

From the start, Proceed to Dog Rock Mark leaving it to Port.

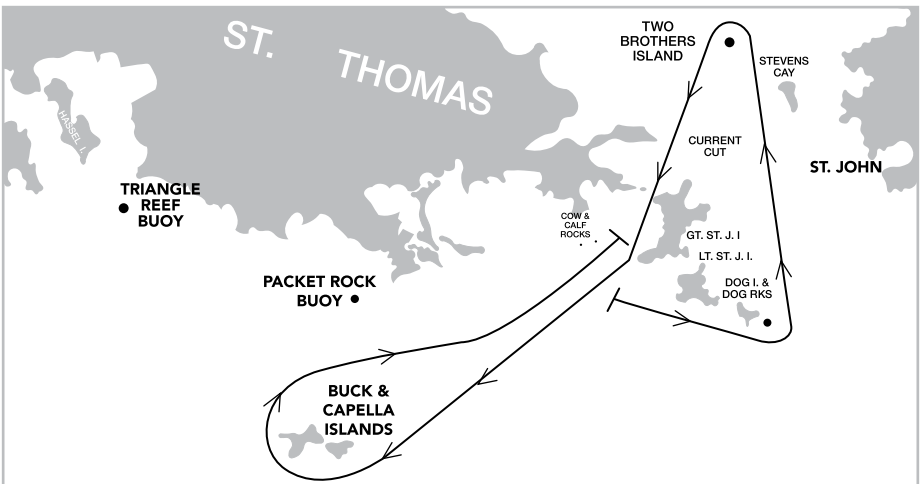
Proceed to Two Brothers Island, leaving it to Port. Leaving Current Cut Rock to

Starboard, proceed through Current Cut to Buck & Capella Islands

leaving them to Starboard.

Leaving Packet Rock buoy to Port, and Cow and Calf Rocks to Port, proceed to

Finish off Christmas Cove.



► **BI-2 BUCK ISLAND COURSE 2**

(16 nm)

St. James Starting Area.

Leave Dog Rock Mark to Port

Leave Maria Bluff Mark to Starboard,

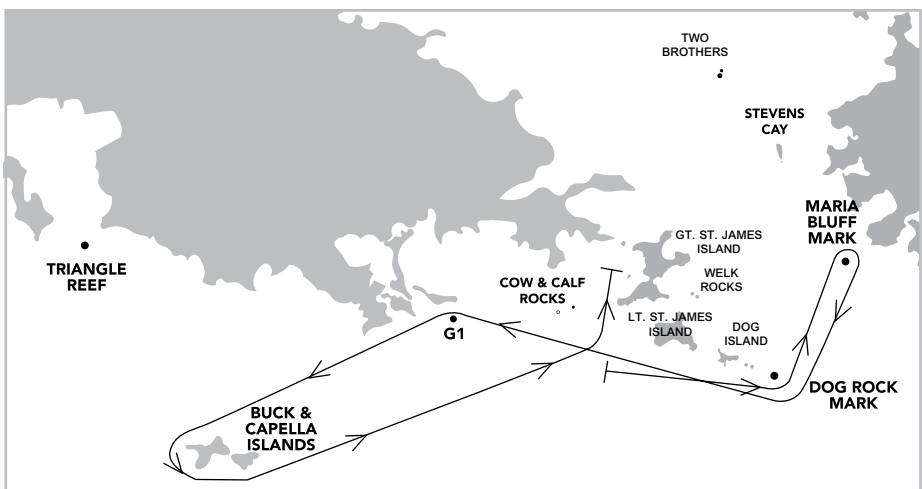
Leave Dog Rock Mark to Starboard,

leave G1 Buoy to Port. Proceed to Buck

& Capella Islands leaving them to Port,

leave Cow and Calf Rocks to Port.

Proceed to finish off Christmas Cove.



► **LI-1 LEDUCK ISLAND RACE 1**

(20nm)

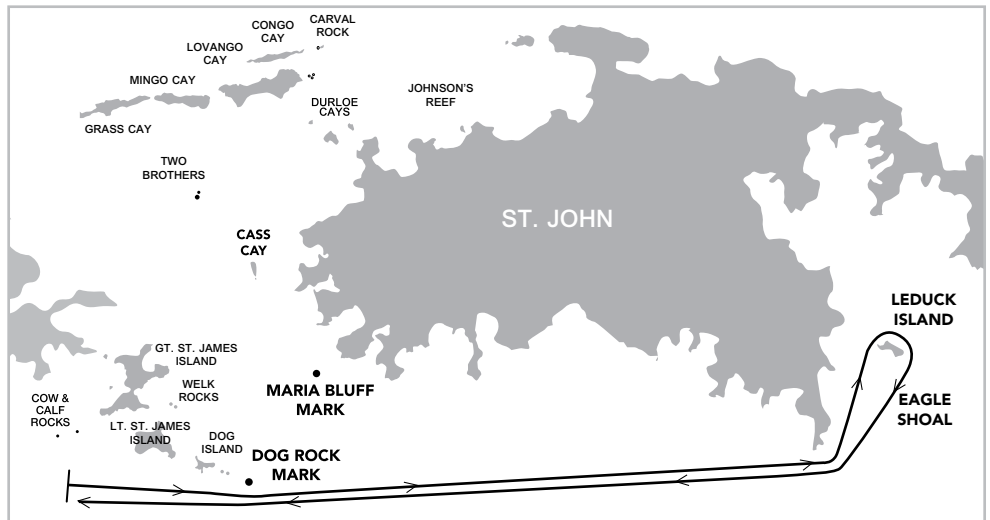
St. James starting area.

From the Start, leave Dog Rock Mark to port. Proceed via the south coast of St. John to Leduck Island.

Leave Leduck Island to starboard.

Leave Dog Rock mark to starboard.

Proceed to St. James Finish.



► **LI-2 LEDUCK ISLAND RACE 2**

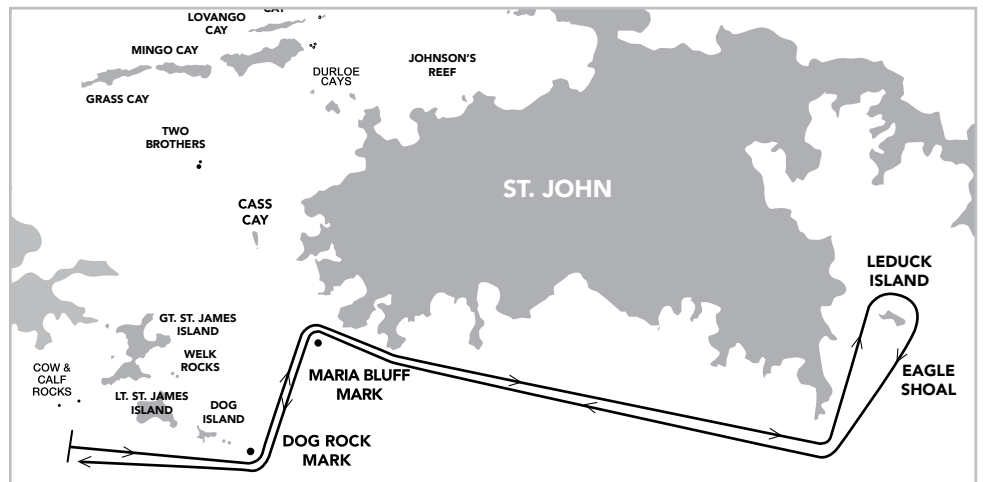
(22nm)

St. James starting area.

From the Start, leave Dog Rock Mark to Port, leave Maria Bluff Mark to Starboard. Proceed to the south coast of St. John and round Leduck Island, in Coral Bay, to Starboard.

Leave Maria Bluff Mark to Port, Leave Dog Rock mark to starboard.

Proceed to St. James Finish.



► **RB-1 REEF BAY RACE**

(14nm)

St. James starting area

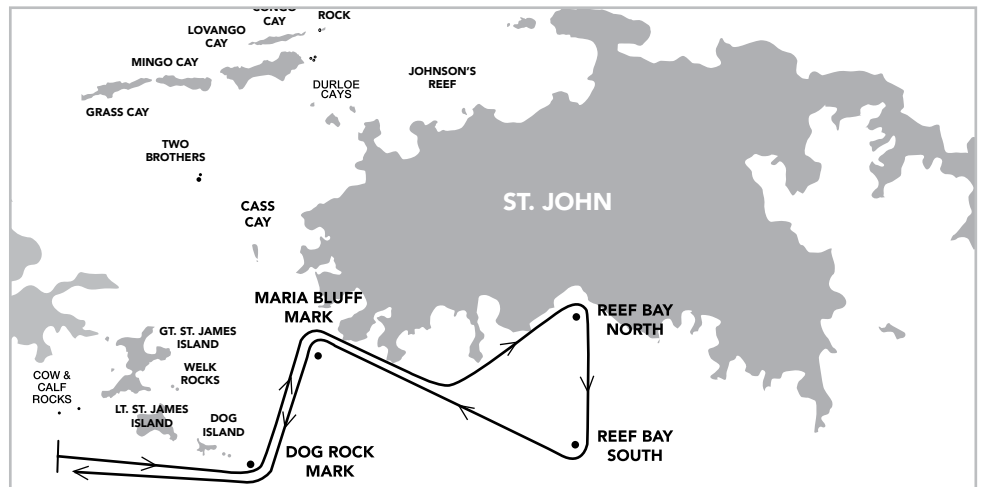
From the Start, leave Dog Rock mark to port, leave Maria Bluff Mark to starboard. Proceed via the south coast of St. John to Reef Bay.

Leave Reef Bay North mark to starboard, leave Reef Bay South mark to Starboard.

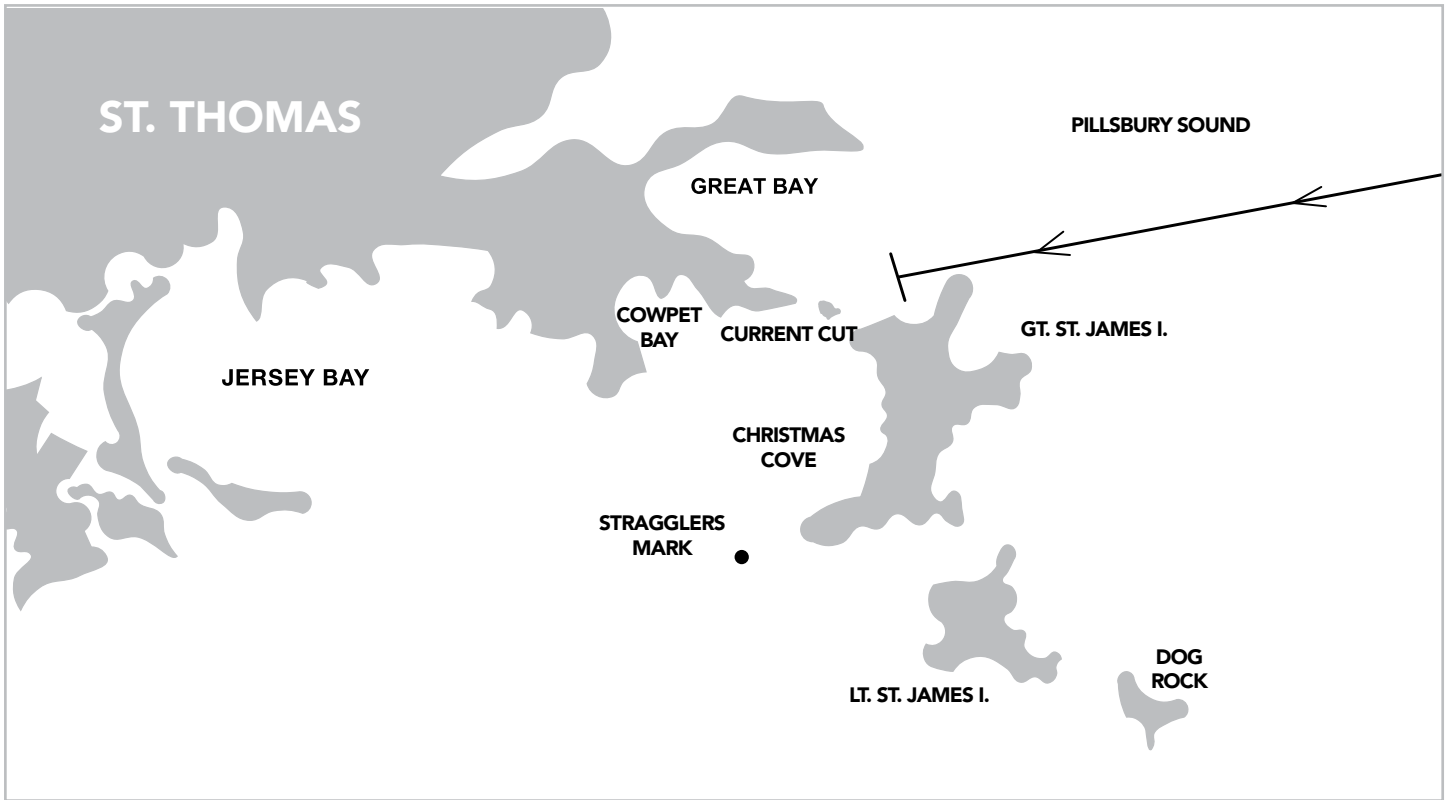
Leave Maria Bluff mark to port.

Leave Dog Rock mark to starboard.

Proceed to St. James Finish.



FINISH DETAIL FOR NORTH PASSAGE AND PILLSBURY SOUND COURSES



► **NP-1 NORTH PASSAGE COURSE**
(25 nm)

St. James starting area

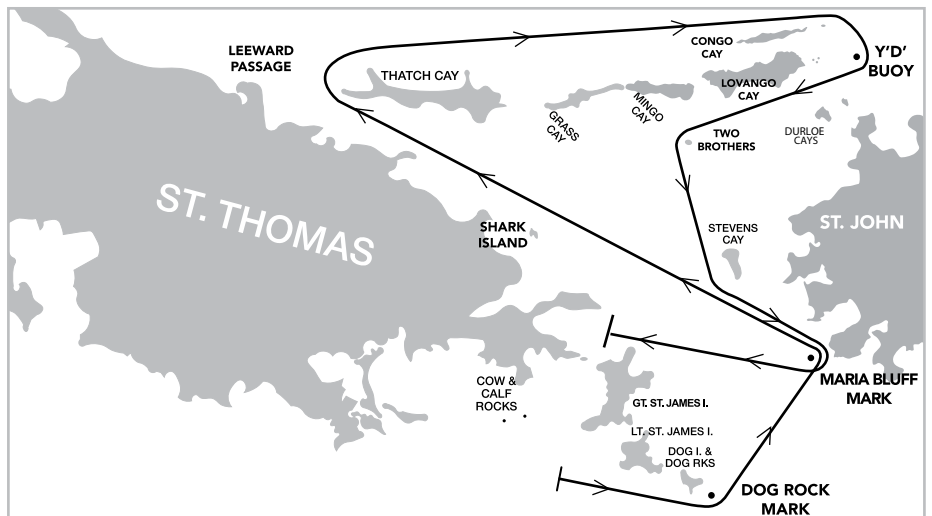
From the Start, leave Dog Rock mark to port, leave Maria Bluff mark to port and leave Shark Island to port.

Proceed thru Leeward Passage. Leaving Thatch Cay, Grass Cay, Mingo Cay, Lovango Cay, Congo Cay and Carval Rock to starboard, proceed to Y'D' Buoy (0.1nm north of "1JR") leaving Y'D' to Starboard. Proceed thru Windward Passage, leaving all Durloe Cays to Port.

Proceed to Two Brothers, leaving it to Port.

Leaving Steven's Cay to Port, proceed to Maria Bluff mark, leaving it to Starboard.

Proceed to the Finish north east of Current Cut.



► **NP-2 NORTH PILLSBURY COURSE**
(22 nm)

St. James starting area

From the Start, leave Dog Rock mark to port, leave Maria Bluff mark to port and proceed to Turtle Rock mark, leaving it to starboard.

Proceed thru Windward Passage leaving all Durloe Cays to Starboard.

Proceed to buoy Y"D" (0.1nm north of Buoy "1JR") leaving Y"D" to Starboard

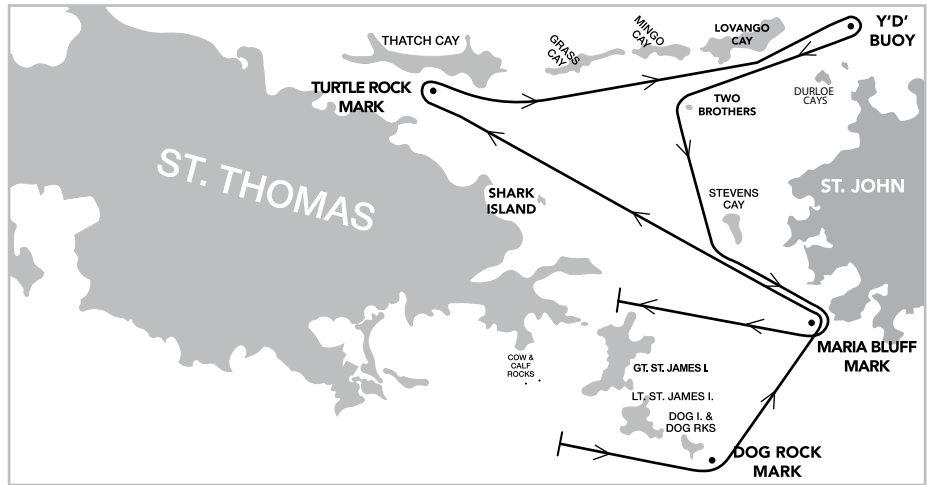
Proceed thru Windward Passage, leaving all Durloe Cays to Port.

Proceed to Two Brothers, leaving it to Port.

Leaving Steven's Cay to Port, proceed to Maria Bluff mark, leaving it to Starboard.

Proceed thru Current Cut leaving Current Cut Rock to Starboard.

Proceed to the Finish north east of Current Cut



► **SP-1 SOUTH PILLSBURY COURSE**
(17 nm)

St. James starting area

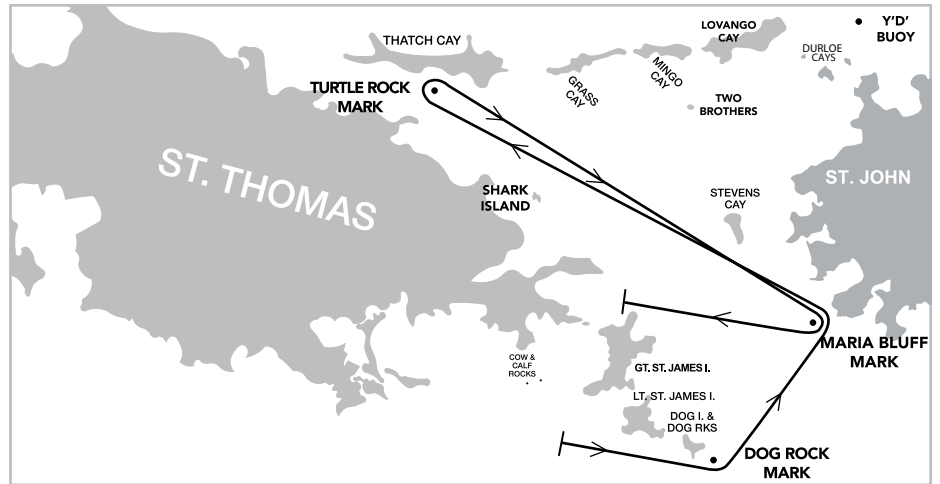
From the Start, leave Dog Rock mark to port, leave Maria Bluff mark to Port.

Leaving Shark Island to Port, proceed to Turtle Rock mark, leaving it to Starboard.

Leaving Shark Island to Starboard and Steven's Cay to Port proceed to Maria Bluff, leaving it to Starboard.

Proceed thru Current Cut leaving Current Cut Rock to Starboard.

Proceed to the Finish north east of Current Cut.



► **SP-3 SOUTH PILLSBURY COURSE**
(14 nm)

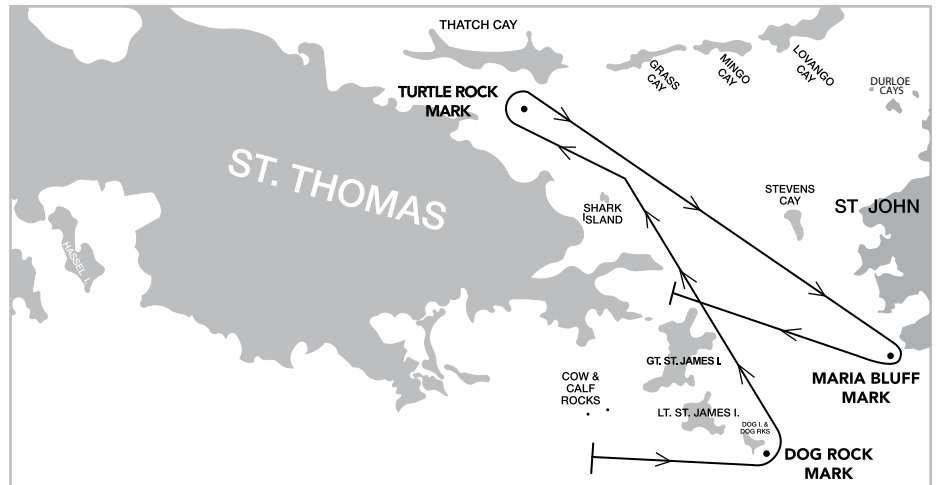
St. James starting area

From the Start, leave Dog Rock mark to port and Shark Island to port proceed to Turtle Rock mark leaving it to starboard.

Leaving Shark Island to Starboard and Steven's Cay to Port proceed to Maria Bluff mark leaving it to starboard.

Proceed thru Current Cut leaving Current Cut Rock to Starboard.

Proceed to the Finish north east of Current Cut



A THANK YOU TO OUR SUPPORTERS



DRINK RESPONSIBLY-CAPTAIN'S ORDERS
PROUDLY DISTRIBUTED IN THE USVI BY BELLOWS INTERNATIONAL



INNOVATIVE • VINOW.COM • CHOICE WIRELESS • CROWLEY



Tel: +1(340) 775-6320
Fax: +1(340) 775-4701
Email: irregatta@gmail.com
www.rolexcupregatta.com

6224 ESTATE NAZARETH 8-58, ST. THOMAS, U.S.V.I 00802-1104