



**NOTICE OF RACE**  
**2012 Melges 32 West Palm Beach Regatta**  
April 26-29, 2012 • West Palm Beach, FL  
[www.melges32.com](http://www.melges32.com)

**Organizing Authority and Host: Sailfish Club of Florida, International Melges 32 Class Association (IM32CA) and Supported by Melges USA**

The 2012 Melges 32 West Palm Beach Regatta, will be hosted by Sailfish Club of Florida, the International Melges 32 Class Association (IM32CA) and supported by Melges USA, Thursday through Sunday, April 26-29, 2012.

Regatta HQ is located at Rybovich Marina, 4200 North Flagler Drive, West Palm Beach, FL 33407. [www.rybovich.com](http://www.rybovich.com)

**1. RULES**

- 1.1 This regatta will be governed by the rules as defined in The Racing Rules of Sailing (RRS).
- 1.2 The “class rules” for the purposes of the definition of “rules” are the International Melges 32 Class Rules (IM32CR).
- 1.3 International Melges 32 Class Rules (IM32CR) Section H (EVENT RULES) including all subsections (H.1-H.8) shall apply.
- 1.4 The Organizing Authority (OA) is Sailfish Club of Florida and IM32CA.
- 1.5 Video and/or photographs shall not be used as evidence at protest or request for redress hearings. This changes RRS 63.6.
- 1.6 All boats must carry minimum equipment as required by the US Coast Guard and the IM32CR C.5 PORTABLE EQUIPMENT. .
- 1.7 If there is a conflict between languages the English text will take precedence.
- 1.8 IM32CR C.1.1 RULES shall apply:
  - (a) RRS 43.1(b) shall not apply.
  - (b) RRS 49.2 is changed in that the lines are hiking lines and tension may be modified.
  - (c) RRS 42.3(c) is modified to allow the spinnaker sheet to be trimmed without restriction.

(d) The ERS Part I – Use of Equipment shall apply.

## **2. ADVERTISING**

- 2.1 IM32CR C.4. ADVERTISING shall apply.
- 2.2 Boats may be required to display advertising chosen and supplied by the organizing authority, if provided flags and decals shall be displayed beginning on Thursday April 26 through Sunday April 29.

## **3. ELIGIBILITY AND ENTRY**

- 3.1 The event shall be open to boats whose Owner or Skipper is a current member of their National Governing Body (US SAILING for US entries; to join call 1-800-SSAIL-1) and the International Melges 32 Class Association (IM32CA).
- 3.2 Owners and crews shall comply with all ISAF and IM32CA rules, including C.2 CREW and H.7 CREW LISTS.
- 3.3 Each entrant must submit a completed Entry Form online via Yacht Scoring ([www.yachtscoring.com](http://www.yachtscoring.com)) by Thursday, April 19 and pay the entry fee no later than Thursday April 26, 2012.
- 3.4 Original signatures must be provided at registration. Late entries will be accepted only with the prior approval of the IM32CA.

## **4. REGISTRATION**

- 4.1 To complete registration, all entrants shall have submitted all required class forms, paid all entry fees and submitted a completed Entry Form and Signed Release Agreement with original signature.
- 4.2 Only boats that have fully completed registration by 1800 hours on Thursday, April 26, 2012 will be eligible to race. Late registration may be allowed only with the prior approval of the IM32CA.

## **5. CLASSIFICATION**

- 5.1 The ISAF Classification Code, Regulation 22, will apply. Details of the ISAF Classification Code and information on how to apply can be found on the ISAF website at [www.sailing.org/classification](http://www.sailing.org/classification).
- 5.2 No later than Friday, April 13, 2012, each entrant shall submit a completed Crew Declaration Form (IM32CR Appendix 1) to Joy Dunigan, IM32CA Administrator at [classadmin@melges32.com](mailto:classadmin@melges32.com) or fax at +1 (912) 756-6728 for verification. The Crew Declaration Form should list all crew, together with their classification and, for Group 1 sailors, their ISAF Sailor ID number.
- 5.3 All Crew Declaration Forms will be posted on the Melges 32 website, [www.melges32.com](http://www.melges32.com), and /or the event web site upon receipt.
- 5.4 The earliest time a classification protest may be submitted is 0900 EDT hours on Friday, April 13. The Classification Protest Time Limit under ISAF Regulation 22.1 is 1700 hours on Wednesday April 25.

5.5 A boat shall not be eligible to race until all crew classifications have been checked for compliance.

## 6. FEES

6.1 The entry fee will be \$1,175 USD per boat for entries received by Thursday, April 19, 2012. The fee for entries received after that date will be \$1,350 USD.

6.2 Fees can be paid by credit card on line at [www.yachtscoring.com](http://www.yachtscoring.com) Checks must be drawn on a U.S. bank and made payable to the Melges 32 Class.

## 7. SCHEDULE

7.1 Schedule of races and other events

Thursday, April 12	IM32CA Crew Declaration Deadline	
Thursday, April 19	Entry Deadline, late fee applies after April 19	
Wednesday, April 25	Registration and crew weigh-in Rybovich South – Captains Lounge	1400 - 1800
Thursday, April 26	Registration and crew weigh-in Rybovich South - Captains Lounge	0800 - 1100
	Registration and crew weigh-in Rybovich South – Captains Lounge	1400 - 1800
	Payment of entry fee deadline	1800
	Competitor meeting and welcome reception Rybovich South – Captains Lounge	1800
	All boats afloat	2000
Friday, April 27	Skippers Briefing - Rybovich South	0815
	Crew weigh-in by appointment only	0800-0830
	Warning signal for 1st race of the day - subsequent races to follow 3 races	1100
	Docktail Party - Sailfish Club	1830
Saturday, April 28	Skippers Briefing - Rybovich South	0815
	Warning signal for 1st race of the day - subsequent races to follow 3 races	1100
	After Racing Social - Rybovish South - Beer and Appetizers	

Sunday, April 29	Skippers Briefing - Rybovich South	0815
	Warning signal for 1st race of the day - subsequent races to follow 2 races	1100
	No Warning Signal after	1430
	Awards After Racing Social at Rybovich South - Beer and Appetizers	

- 7.2 Eight (8) races are scheduled: The Race Committee (RC) may run fewer races at its discretion and may make up a race on Sunday if needed.

## 8. MEASUREMENTS

- 8.1 Each entrant shall provide a completed Yacht Owner Compliance Declaration (IM32CR Appendix 5) to Joy Dunigan, IM32CA Administrator, via e-mail at [classadmin@melges32.com](mailto:classadmin@melges32.com) or via fax at +1 (912) 756-6728 by 1800 on Thursday, April 26.
- 8.2 Each entrant shall provide a completed Sail Declaration Form (IM32CR Appendix 2) to Joy Dunigan, IM32CA Administrator by the close of registration (1800) on Thursday, April 26.
- 8.3 Each entrant shall submit a completed Crew Weigh-in/Liability Form (IM32CR Appendix 6) to Joy Dunigan, IM32CA Administrator by the close of registration (1800) on Thursday, April 26.
- 8.4 All competitors shall weigh-in during the following times:  
1400 - 1800 hours on Wednesday, April 25  
0800 - 1100 and 1400 - 1800 on Thursday, April 26  
Late weigh-in on Friday, April 27 from 0800 - 0830 is by appointment only.

## 9. SAILING INSTRUCTIONS

- 9.1 Sailing Instructions will be provided to entrants that have completed registration at the registration desk.

## 10. VENUE

- 10.1 The racing area will be south of the Lake Worth Inlet. See attachment A.

## 11. THE COURSES

- 11.1 Courses will be windward / leeward, and may use offset marks and leeward gates.

## 12. PENALTY SYSTEM

- 12.1 IM32CR H 4.1(a) shall apply. RRS 44.1(a) and 44.2 are changed as so the penalty shall be a one turn penalty including one tack and one gybe, except within 3 boats lengths of a mark the penalty shall be a two turn penalty each turn including one tack and one gybe.

- 12.2 Unless the course is shortened to finish at the windward mark, penalties within 3 boat lengths of the windward mark or on the offset leg may be delayed and taken as soon as possible on the downwind leg.

### **13. SCORING**

- 13.1 IM32CR H.4.2. Scoring shall apply.
- (a) Three races are required to be completed to constitute a series.
  - (b) When fewer than six races have been completed, a boat's series score will be the total of her race scores.
  - (c) When six or more races have been completed, a boat's series score will be the total of her race scores excluding her worst score.

### **14. SUPPORT BOATS**

- 14.1 Restrictions on Support Boats shall apply as described in International Melges 32 Class Rule H.5 OUTSIDE ASSISTANCE.
- 14.2 Only support boats that have registered with the RC and carry identification provided by the RC will be allowed in the racing area.

### **15. HAUL-OUT RESTRICTIONS**

- 15.1 Boats shall not be hauled-out during the regatta except with and according to the terms of prior written permission of the race committee. All boats shall be launched prior to 2000 hrs Thursday, April 26, 2012.

### **16. RADIO COMMUNICATION**

- 16.1 While on the water, the RC may communicate with competing boats via VHF radio, including starting penalties.
- 16.2 Each competing boat shall carry a VHF marine radio capable of transmitting and receiving VHF channel 9, 16, 22A, 69, 71, 72 and 73.

### **17. PRIZES**

- 17.1 Prizes will be awarded after racing on Sunday to boats placing first through third overall.
- 17.2 Other prizes may be awarded at the discretion of the OA.

### **18. DISCLAIMER OF LIABILITY**

- 18.1 Competitors participate in the regatta entirely at their own risk. See rule 4, Decision to Race. The organising authority will not accept any liability for material damage or personal injury or death sustained in conjunction with or prior to, during, or after the regatta.
- 18.2 Skippers and crew will be required to sign a waiver of liability during registration.

### **19. INSURANCE**

- 19.1 Each participating boat shall be insured with valid third-party liability insurance with a minimum cover of \$300,000 USD per event or the equivalent.

## 20. FURTHER INFORMATION

### **Boat Launching, Hauling and Storage:**

#### **Cracker Boy Boat Works**

**Contact:** Laurie Schubert

**E-mail:** [cbbwrb@comcast.net](mailto:cbbwrb@comcast.net)

1124 Avenue C

Riviera Beach, FL 33404

Phone: 561-845-0357

Fax: 561-845-0467

Web: [www.crackerboyboatworks.com](http://www.crackerboyboatworks.com)

### **Dockage:**

#### **Rybovich Marina**

**Contact:** Jason Sprague

**E-mail:** [jsprague@rybovich.com](mailto:jsprague@rybovich.com)

4200 North Flagler Drive

West Palm Beach, FL 33407

Phone: 561-840-8308

### **Accommodations:**

#### **Springhill Suites**

2437 Metrocentre Boulevard

West Palm Beach, Florida 33407

Phone: 561-689-6814

#### **Group Code: mglmglb**

Online Reservation Link:

<http://www.marriott.com/hotels/travel/pbiwi-springhill-suites-west-palm-beach-i-95/?toDate=4/29/12&groupCode=mglmglb&fromDate=4/23/12&app=resvlink>

### **For additional event information please contact:**

#### **International Melges 32 Class Association**

**Contact:** Joy Dunigan, IM32CA Administrator

**Contact:** Shirley Winn, North American Fleet Secretary

**E-mail:** [classadmin@melges32.com](mailto:classadmin@melges32.com)

Phone (Office): 912-756-6706

Phone (Mobile): 912-398-5776

### **Melges USA**

#### **Andy Burdick, President**

**E-mail:** [andy@melges.com](mailto:andy@melges.com)

Phone (Office): 262-275-1110

### **PRO**

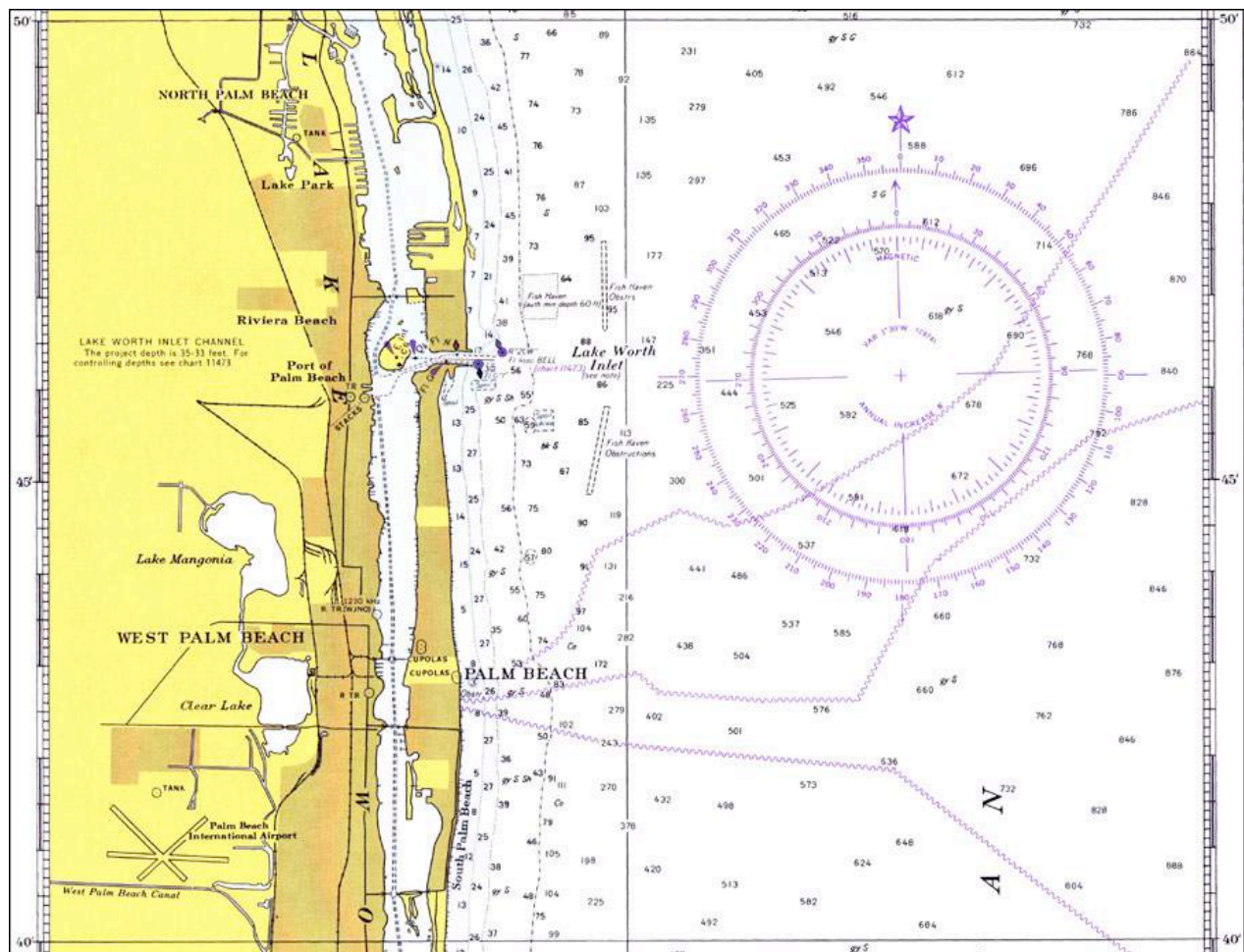
#### **Hank Stuart, ISAF International Race Officer**

**E-mail:** [hstuart8m@gmail.com](mailto:hstuart8m@gmail.com)

Phone (Mobile): 585-414-6105

## ATTACHMENT A

### VENUE- Racing Area South of the Lake Worth Inlet



Not to be used for navigation