



Lake Ontario Short-Handed Race Series 2019

Race 1 - Course Race –Sunday, June 2

Races 2 & 3 - DYC Week-end - June 15/16

Race 4 - Long Distance Race - August 17-18,

Races 5 & 6 - DYC Weekend - September 14/15

Lake Ontario Offshore Racing of the Port Credit Yacht Club

Sailing Instructions

Version V01.04/Date 2019-09-12

With Amendments 1, 2, 3 & 4

www.loor.ca

The Registration and Race Document Web Site is

www.yachtscoring.com/emenu.cfm?eID=6126

Race Committee Email Address: racecommittee@loor.ca

Race Committee Phone: 1-866-462-8828

Race Committee VHF Channel 71

Amendments

#	DATE	ITEM	CHANGE
1	2019-06-13	<ul style="list-style-type: none"> • 1.7.2 • 9.1 	<ul style="list-style-type: none"> • Modified to Six <i>or more</i> minutes • Added to end of PCYC Mark. <p><i>For Race 3, YYC to PCYC, only, the mark will be a yellow inflatable mark.</i></p>

		<ul style="list-style-type: none"> • 8.2 & 8.3 • 14.2 	<p>Added to the end of DYC Finish Mark and DYC Start Mark</p> <p><i>For the races on Saturday, June 15 and Sunday, June 16, an inflatable mark will replace the white drum.</i></p> <ul style="list-style-type: none"> • Changed Race 2 & 3 to involve DYC • Added to the end: Protests and requests for redress may be filed by emailing them to protests@loor.ca within the time limits described above
2	2019-06-14	<ul style="list-style-type: none"> • 8.2 • 8.3 	<ul style="list-style-type: none"> • Race 2 cancelled • Race 3 course changed to Race 1 course with first waning at 10:25
3	2019-09-09	<ul style="list-style-type: none"> • 9.1 	<ul style="list-style-type: none"> • Added to end of PCYC Mark. <p><i>For Race 6, DYC to PCYC, the mark will be a yellow inflatable mark.</i></p>
4	2019-09-12	<ul style="list-style-type: none"> • 15.2 	<p>To reflect what is in the NOR, 15.2 is replaced with:</p> <p>For sailboats racing under PHRF-LO, PHRF-LO <i>Alternative</i> Time-on-time will be used to calculate the corrected time.</p>

The notation '[DP]' in a rule in the Notice of Race (NOR), Sailing Instructions (SIs) or other additional document that is a rule means that the penalty for a breach of that rule may, at the discretion of the protest committee, be less than disqualification.

The notation '[NP]' in a rule in the Notice of Race (NOR), Sailing Instructions (SIs) or other additional document that is a rule means that the penalty for a breach of that rule will not be grounds for a protest by a sailboat.

1 RULES

- 1.1 The race will be governed by the rules, as defined in The Racing Rules of Sailing (RRS).
- 1.2 The prescriptions of Sail Canada to the RRS apply for the entire race; including in US waters, see www.sailing.ca/files/RRS_2017_2020_Sail_Canada_Prescription_Final_E_N.pdf
- 1.3 Sail Canada is the appeal authority for this event, including for incidents in US waters.
- 1.4 Part 2 of the RRS will be replaced with the Right of Way Rules of the

International Regulations for Preventing Collisions at Sea as amended by Transport Canada between 2000 and 0600 EDT.

[laws-lois.justice.gc.ca/eng/regulations/C.R.C., c. 1416/page-4.html](https://laws-lois.justice.gc.ca/eng/regulations/C.R.C.,_c._1416/page-4.html)

1.5 [DP] [NP] Offshore Special Regulations (OSR)

1.5.1 Race 4, Long Distance Race, is a Category 3 Event under the World Sailing Offshore Special Regulations. The Offshore Special Regulations for Category 3 with prescriptions from Sail Canada and amended by the Lake Ontario Offshore Racing apply, as documented in:

Lake Ontario Offshore Special Regulations for Category 3 Monohulls
Lake Ontario Offshore Special Regulations for Category 3 Multihulls

These are available at the Registration and Race Document Web Site.

1.5.2 All other LOSHRS races are a Category 4 Event under the World Sailing Offshore Special Regulations. The Special Regulations for Category 4 apply with prescriptions from Sail Canada and as amended by the Lake Ontario Offshore Racing apply, as documented in:

Lake Ontario Offshore Special Regulations for Category 4 Monohulls
Lake Ontario Offshore Special Regulations for Category 4 Multihulls

These are available at the Registration and Race Document Web Site.

1.6 Applicable Class Rules

Doublehanded & Fully Crewed sailboats racing in

PHRF PHRF- LO Rules shall apply and PHRF-LO is the Handicap/Measurement Authority.

Multihull GLMRA Rules shall apply and GLMRA is the Handicap/ Measurement Authority.

Singlehanded sailboats (Solo Challenge) racing in

Monohull PHRF- LO Rules shall apply and PHRF-LO is the Handicap/Measurement Authority.

Multihull GLMRA Rules shall apply and GLMRA is the Handicap/ Measurement Authority.

1.7 The event is governed by PCYC's *Visiting Yacht's Policy*, including pre-registration, available under the link "Additional Event Links" on the Registration and Race Document Web Site.

1.8 The Racing Rule(s) will be changed as outlined below. The changes will appear in full in the Sailing Instructions. The Sailing Instructions may also change other racing rules

1.8.1 RRS 28.1

Is modified by replacing first sentence with

A boat shall *start* or be assessed the time penalty in 1.8.2, sail the

course described in the sailing instructions and *finish*.

- 1.8.2 RRS 29.1, RRS 64.1 (a) and RRS Appendix A5
Are modified such that a sailboat that is OCS at the start of her class is assessed a 45-minute penalty. A sailboat starting six or more minutes before her Start Signal may be protested by the Race Committee, and the Protest Committee will apply an appropriate penalty if the sailboat is found to have infringed this.
- 1.8.3 RRS 41 Outside Help
“Outside Help” is modified herein to allow all forms of communication. Each sailboat may communicate with any person, competitor, sailboat, or outside source for information available using any means available throughout the race.
- 1.8.4 RRS 42.3 Exceptions
Is modified so an engine may be used for generating electrical power provided that such use does not advance the boat’s position.
- 1.8.5 RRS 51 Movable Ballast
Is modified to allow canting keels and water ballast, assuming the applicable class/measurement/handicap rules permit them.
- 1.8.6 RRS 52 Manual Power
Is modified to allow canting keels and water ballast, assuming the applicable class/measurement/handicap rules permit them.
All movable ballast systems must be capable of manual operation if the powered systems are inoperable.
Is modified to allow the use of power auto helm devices.
- 1.8.7 RRS 60.1 (a)
Breaches of specific Sailing Instructions, as denoted in the Sailing Instructions by “[NP]”, will not be grounds for a protest by a sailboat.
- 1.8.8 [NP] RRS 62.1
Is modified to allow the Race Committee the ability to announce sailboats subject to RRS 29.1.
Is modified to allow the Race Committee the ability to announce a sailboat’s completion at the finish.
- 1.8.9 RRS 64.1
Is modified that for infringements of the rules other than Part 2, the Jury may award a lesser penalty than DSQ, unless stated otherwise in the Notice of Race or Sailing Instructions.
- 1.8.10 RRS A3

Is amended by adding the following:

If any handicap or rating system used, does not state the number of significant digits for the corrected time, the corrected time shall be calculated to the nearest second.

1.8.11 [DP] [NP] RRS A4 & A5

Is modified such that a sailboat not starting within 30 minutes of her starting signal will be scored DNS.

1.9 [DP] All sailboats shall comply with Ontario Environmental Protection Act Regulations #343 as documented at:

www.e-laws.gov.on.ca/html/regs/english/elaws_regs_900343_e.htm

Any penalty assessed under this rule may be used by the Organizing Authority as a consideration on whether to accept future registrations by this sailboat or person in charge.

1.10 [DP] [NP] The Person in Charge of a participating sailboat shall accurately and fully maintain the electronic crew list for the sailboat on the Race Document Web site.

1.11 [DP] Backstay Fleet/Division Pennant

Sailboats shall fly the listed numerical pennant, for their Class/Fleet/Division, for which they are racing, from their backstay or other prominent position if she has no backstay.

This will be an International Code Signal numeral pennant, from one (1) to nine (9), as defined in *Fleet/Division Organization (Splits) and Starting Sequences Document*, see section 5.2

2 NOTICE TO COMETITORS

Notices to competitors will be posted on the official notice boards as follows:

- At PCYC – on the wall to the left at the foot of the stairs to the lower level of the Clubhouse.
- At Youngstown Yacht Club – on the wall to the right on entering the main entrance to the Clubhouse.
- At Port Dalhousie – on the notice board in the club house

And on the web official notice board at www.yachtscoring.com/notice_board.cfm?eid=6126

3 CHANGES TO SAILING INSTRUCTIONS

Any change to the sailing instructions will be posted before 0800 on the day it will take effect, except that any change to the schedule of races will be posted by 2000 on the day before it will take effect.

4 SIGNALS MADE ASHORE

Signals made ashore will be displayed on the main flag pole of the

applicable club.

5 SCHEDULE OF RACES

RACE	PARTICIPANTS' MEETING		RACE
	TIME	LOCATION	FIRST WARNING
Race 1	09:15 Sun. Jun. 2	PCYC	11:25 Sun. Jun. 2
Race 2	19:30 Fri. Jun. 14	PCYC	Cancelled
Race 3			10:25 Sun. Jun 16
Race 4	19:30 Fri. Aug. 16	PCYC	09:55 Sat. Aug. 17
Race 5	19:30 Fri. Sep. 13	PCYC	09:55 Sat. Sep. 14
Race 6			09:55 Sun. Sep.15

Onsite check-in will occur 30 minutes before the scheduled start of each Participants' Meeting.

6 CLASS FLAGS

6.1 Division and fleet splits and starting sequence, including class flags, for RRS 26, will be posted by May 28, 2019 on the Race Document Web Site under SPLITS & STARTING SEQUENCES and will be available at the first Competitors' meeting.

6.2 Sailboats shall fly the listed numeral pennant, for their class, PHRF rating for which they are racing, from their backstay or other prominent position if she has no backstay. The required numeral pennants, from 0 to 9 inclusive, shall be posted by May 28, 2019 on the Race Document Web Site under SPLITS & STARTING SEQUENCES.

7 RACING AREA

The race will occur in the western end of Lake Ontario.

8 THE COURSES

8.1 Race 1 – Short Course – 14 NM

Start	LOOR Start Area	-
To	Sail south of Toronto Islands	-To
To	T1 Toronto Harbour Outer Approach lighted spar buoy	Left to port
To	Sail south of Toronto Islands	-
To Finish	EYC/MCC Racing Mark 5	-

8.2 Race 2 – Cancelled

Start	PCYC Start Mark	-
To Finish	DYC Finish Mark	-

8.3 Race 3 – Short Course – 14 NM (Repeat)

Start	LOOR Start Area	-
To	Sail south of Toronto Islands	-To
To	T1 Toronto Harbour Outer Approach lighted spar buoy	Left to port
To	Sail south of Toronto Islands	-
To Finish	EYC/MCC Racing Mark 5	-

8.4 Race 4 – Long Distance Race - 100 NM

Start	LOOR Start Area	-
To	TE18 Gibraltar Point Buoy	Left to starboard
To	Burlington Weather Tower, AKA Van Wagners Beach Light	Left to port
To	Niagara Bar Lighted Buoy 2	Left to port
To	PCYC Mark	Left to starboard
To Finish	PCYC Finish Mark for Onshore Finish & PCYC Shore Station	-

8.5 Race 5 – PCYC to DYC – 25 NM

Start	PCYC Start Mark	-
To Finish	DYC Finish Mark	-

8.6 Race 6 – DYC to PCYC – 25 NM

Start	DYC Start Mark	-
To Finish	PCYC Mark	-

9 MARKS

9.1 Marks in Alphabetical Order

MARK REFERENCE	DESCRIPTION
Burlington Weather Tower, AKA Van Wagners Beach Light	A tower with a flashing yellow light located at approximately 43° 16.22' N 079° 45.56' W.
DYC Finish Mark	The DYC Mark 3, a white plastic drum, approximately at 43° 13.25' N, 079° 16.21' W which is approximately 0.7 NM on bearing 165 0 from the entrance to Dalhousie harbour.

	For the races on Saturday, June 15 and Sunday, June 16, an inflatable mark will replace the white drum.
DYC Start Mark	<p>The DYC Mark 3, a white plastic drum, approximately at 43° 13.25' N, 079° 16.21' W which is approximately 0.7 NM on bearing 165 0 from the entrance to Dalhousie harbour.</p> <p>For the races on Saturday, June 15 and Sunday, June 16, an inflatable mark will replace the white drum.</p>
EYC/MCC Racing Mark 5	A drum mark with number 5, approximately at 43° 35.06' N, 079° 27.28' W
LOOR Start Area	Located approximately 0.5 NM on a bearing of 150° magnetic from the entrance to the harbour at Port Credit Yacht Club located at approximately 43° 33.41' N 079° 32.90 W
Niagara Bar Lighted Buoy 2	A red buoy marked "2", with a flashing red light (4s.), located at approximately 43°19.04'N, 79°04.23'W, 3.4 NM north of the light at Fort Niagara. (Niagara Bar light buoy 2)
PCYC Finish Mark for Onshore Finish	A white buoy with orange stripes and fixed low intensity flashing amber (yellow) light, lighted only overnight, approximately 155 mag 0.2 NM from the shore station approximately at 43°33.62' N 079°33.22' W. See Diagram 2, The Finish - Onshore. Race Committee may post the actual set location on the Official Notice Boards
PCYC Mark	A white buoy with orange stripes and fixed low intensity flashing amber (yellow) light, lighted only overnight, approximately 180° and 0.75 NM from the PCYC Harbour entrance light approximately at 43° 33.3366 ' N 079° 33.3889' W. See Diagram 2, The Finish - Onshore.

	<p>The Race Committee may post the actual set location on the Official Notice Boards.</p> <p><i>For Race 3, YYC to PCYC only, the mark will be a yellow inflatable mark</i></p> <p><i>For Race 6, DYC to PCYC, the mark will be a yellow inflatable mark</i></p>
PCYC Race Committee Shore Station	A mast flying an orange flag, located on the headland immediately west of the entrance to the harbour at PCYC approximately at 43° 33.76' N 079° 33.45' W. See Diagram 2 The Finish – Onshore for use in Race 4, Long Distance Race
T1 Toronto Harbour Outer Approach lighted spar buoy	A green spar, marked “T1”, approximately at 43° 36.64' N 079° 21.00' W
TE18 Gibraltar Point Buoy	A red buoy with a flashing red light located just off the Toronto Islands located at approximately 43° 36.32' N, 079° 23.50' W.
YYC Finish Mark	Fort Niagara Lighted Bell Buoy 3, A green bell buoy displaying a green flashing light located approximately 43° 16.42' N, 079° 04.51' W, 0.5 nm off the mouth of the Niagara River.
YYC Start Mark	The westernmost Mark (#3) of the Olympic Circle Course located approximately 2 nm NE of Fort Niagara.

9.2 Marks as listed, above, should be at the identified latitude and longitude location. If a mark is not at the identified latitude and longitude location, or otherwise cannot be seen due to poor visibility, then the sailboat shall round the identified latitude and longitude location as indicated in the Sailing Instructions and continue with the race.

9.3 A record shall be entered in the sailboat’s log detailing the timeline and efforts made to find the mark and the time that the mark’s identified latitude and longitude was deemed to have been rounded. This record must be submitted as per 11.3. The sailboat’s GPS tracking record shall be saved and provided for evidentiary review by the Race Committee on request.

10 THE START

- 10.1 Races will be started by using rule 26, with an interval of at least one minute between a starting signal and the warning signal for the next start.
- 10.2 The starting line will be between an inflatable mark and the halyard carrying an orange flag on the Race Committee signal vessel.
- 10.3 After the first warning signal and prior to her warning signal, a sailboat shall keep clear of the starting area that extends one-quarter of the length of the starting line ahead of and behind the starting line. It shall also extend one-quarter of the length of the starting line past either end of the starting line; see Diagram 1, The Starting Area.
- 10.4 [NP] *If and only if, code flag "L" is displayed*, on the Race Committee Signal Vessel, sailboats shall sail on starboard tack close to the stern of the Race Committee Signal Vessel and shall report its sail number. Check in will not be complete until the Race Committee acknowledges the sailboat. Sailboats checking in must comply with 10.3. Check in by VHF radio or cell phone may not be accepted.
- 10.5 [DP] [NP] A sailboat starting later than 30 minutes after her starting signal will be scored Did Not Start. Any sailboats starting within the time limit and if the Race Committee is no longer on station, shall radio the Race Committee VHF Channel 71 Canadian when she is starting.
- 10.6 If any part of a sailboat's hull, crew or equipment is on the course side of the starting line during the minute before her starting signal or she is subject to SI 1.8.2, the Race Committee may announce this on the VHF Channel 71 Canadian. Failure to make a broadcast or its order will not be grounds for a request for redress.

11 THE FINISH

- 11.1 Boats shall finish between the halyard carrying the orange shape or flag as described in the applicable Course above and the final mark of the course as described in the applicable Course above.
- 11.2 [NP] After a sailboat has finished, the Race Committee may acknowledge the completion by providing the sailboat's finish time or other signal. This acknowledgement, the failure to make the acknowledgement or its order, will not be grounds for a request for redress.
- 11.3 In the absence of the Race Committee at the finish line, a yacht shall take her own finishing time and notify the Race Committee at the finish by VHF radio, phone call to race committee phone number or email to race committee email. The report shall be submitted with four (4) hours.
- The recommended approach is to take a photograph of a GPS screen showing the time and position and submitting to the Race Committee email address.
- 11.4 If there is no longer an established finishing line, the finish shall be a line extending from the finishing mark at right angles to the course from the last

mark and of less than 75 yards in length in either direction from the mark.

- 11.5 If neither the Race Committee Vessel is on station at the finish nor is there a Finish Mark, the finish shall be a line extending from the identified latitude and longitude location of the Finish Mark, as indicated in the Sailing Instructions, at right angles to the course from the last mark and of less than 75 yards in either direction from the identified latitude and longitude location of the Finish Mark.

12 PENALTY SYSTEM

The Scoring Penalty, rule 44.3, will apply, with 44.3 (c) is changed so that the penalty assessed will be 30 minutes added to her elapsed time. A sailboat taking a scoring penalty shall complete the Scoring Penalty and file it with the race committee within two hours of her finish.

13 TIME LIMITS AND TARGET TIMES

- 13.1 There is no time limit
13.2 See SI 16 for withdrawals

14 PROTESTS AND REQUESTS FOR REDRESS

- 14.1 Protest forms are available from the Race Committee
- 14.2 For races finishing at PCYC, protests shall be filed at the Communications Centre (inside the front door of the clubhouse) with two (2) hours of finishing except that if a boat's finish time is after 1800 and before 0600 of the next day, she shall file her protest there by 0900 of that next day.
- For other races, protests shall be filed with the Race Committee within two (2) hours of finishing except that if a boat's finish time is after 2200 and before 0600 of the next day, she shall file her protest there by 0900 of that next day.
- Protests and requests for redress may be filed by emailing them to protests@loor.ca within the time limits described above.
- 14.3 Notices of protests by the race committee or protest committee will be posted to inform boats under rule 61.1(b).
- 14.4 Hearings will take place at PCYC at 1900 EDT on the Thursday following the race.

15 SCORING

- 15.1 The series is scored using A9
- 15.2 For sailboats racing under PHRF-LO, PHRF-LO *Alternative* Time-on-time will be used to calculate the corrected time.
- 15.3 Series Scoring
- 15.3.1 LOSHRS Overall Season Championship

15.3.1.1 If Race 4, Long Distance Race, is held

To be eligible for the LOSHRS Overall Season Championship, a sailboat

- Must complete Race 4, Long Distance Race, i.e., no score of DNC, DNS, OCS, UFD, BFD, DNF, RET, DSQ, DNE
- From the row for the number races completed in column 1, below
 - The sailboat must compete in a minimum number of races, column 2, below, in the same class as she raced in Race 4, Long Distance Race, i.e., no score of DNC
 - The sailboat's score for the LOSHRS Overall Season Championship is calculated as defined in column 3, below.

Column 1	Column 2	Column 3
Races Held	Minimum races in which a sailboat is scored other than DNC	Races includes to calculate overall score for a sailboat (*)
1	1	Long Distance Race
2	2	Long Distance Race and all other races
3	2	Long Distance Race and all other races
4	2	Long Distance Race and all other races
5	3	Long Distance Race and best three other races
6	3	Long Distance Race and best three other races

(*) From the same fleet as she raced in Race 4, Long Distance Race.

15.3.1.2 If Race 4, Long Distance Race, is not held

To be eligible for the LOSHRS Overall Season Championship, a sailboat

- From the row for the number races completed in column 1, below
 - The sailboat must compete in a minimum number of races, column 2, below, in the same class
 - The sailboat's score for the LOSHRS Overall Season Championship is calculated as defined in column 3, below.

Column 1	Column 2	Column 3
Races Held	Minimum races in which a sailboat is scored other than DNC	Races included to calculate overall score for a sailboat
1	1	All Races
2	2	All Races
3	2	All Races
4	2	All Races

5	3	All Races
---	---	-----------

15.3.2 LOSHRS Day Race Season Championship

15.3.2.1 Only Day Races will be included in the calculation of the LOSHRS Day Race Season Championship.

Day Races Held	Races included to calculate overall score for a sailboat
1	All Races
2	All Races
3	All Races
4	Best three
5	Best three

16 SAFETY REGULATIONS

16.1 Sailboats are encouraged to implement their own check-in process and schedule during the race with individuals ashore via phone, email or other mechanism.

16.2 A boat withdrawing from the race shall wear her Ensign and keep clear of other competitors.

16.3 The Race Committee shall be notified of a boat's withdrawal at the earliest possible opportunity on VHF Channel 71 Canadian, at the following telephone number 1-866-462-8828, then follow the prompts, or at the email address of racecommittee@loor.ca and provide the following information:

- Yacht name and sail number
- Location
- Status of yacht and crew
- Harbour to which she is proceeding and estimated time of arrival
- After withdrawing and until secure in harbour, the yacht shall monitor VHF Channel 16 CONTINUOUSLY.
- After reaching harbour and securing the yacht, the skipper shall again contact the Race Committee, and notify them of location and status of yacht and crew.

16.4 Any yacht in difficulty WHETHER WITHDRAWING OR NOT, shall immediately contact the Coast Guard, AND any other vessel in the vicinity and make them aware of her situation, and thereafter notify the Race Committee.

16.5 Sailboats may check in with the Race Committee at any time during the race to advise Race Committee of their position at 1-866-462-8828 extension 1 or the email address of racecommittee@loor.ca .

16.6 [NP] Failure of a boat to make every reasonable effort, under the circumstances, to comply with 16.3, may result in protest by the Race

Committee.

16.7 [NP] All sailboats racing shall be required to maintain a log of significant events, mark rounding, calls to the Coast Guard, and engine on and off for charging only.

16.8 It is recommended for the Long-Distance Race that each yacht files a Sail Plan with the Canadian Coast Guard.

17 REPLACEMENT OF CREW AND EQUIPMENT

17.1 There are no restrictions on the substitution of crew or replacement of equipment provided that this is in accordance with the Rules and the rating certificate.

18 [NP] EQUIPMENT AND MEASUREMENT CHECKS

A sailboat may be inspected at any time during the period from the Mandatory Participants' Meeting until three hours after her finish. The Race Committee may, at the finish of the race, direct a sailboat to proceed directly to a designated location at the destination yacht club. A sailboat which fails to follow such directions or which subsequently fails the inspection may be protested by the Race Committee.

19 RADIO COMMUNICATION

19.1 Marine VHF Channel 71 Canadian shall be used by the Race Committee for radio communication during the race.

19.2 Each sailboat shall monitor VHF Channel 71 from one hour before her warning signal until one hour after the last starting signal, and from approximately one hour before finishing until 30 minutes after finishing.

19.3 The Race Committee may announce the status or change in status of the Race Committee Finish Vessel or Onshore Finish Station on the hour and half-hour on VHF Channel 71.

19.4 Sailboats are encouraged to talk to other sailboats in the race on marine VHF channel 71 throughout the race, especially at 1000 and 2200 EDT. Sailboats shall monitor marine VHF channel 16 at all other times.

20 PRIZES

Flags shall be awarded as follows:

Individual Races

- Flags are awarded for first, second and third.

Fleet Series

- A white flag will be awarded for first place in each fleet as with series scoring as defined in Section 14 Scoring.

Trophies

A list of the trophies awarded, their eligibility requirements and selection methodology is available at the www.loor.ca web site.

Awards Night date shall be announced at a later date.

21 **DISCLAIMER OF LIABILITY**

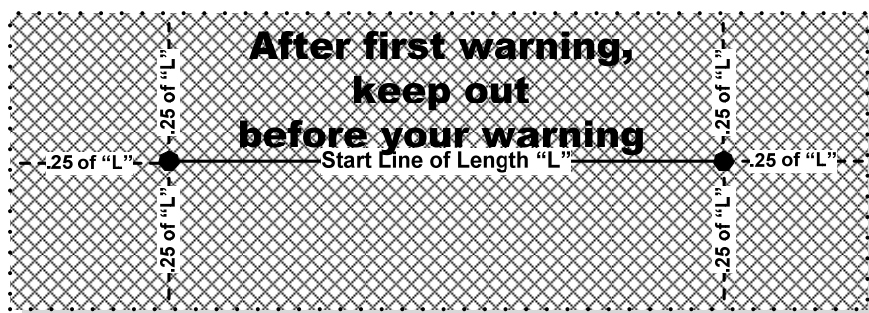
Sailing is an activity that has an inherent risk of damage and injury. Competitors in this event are participating entirely at their own risk. See RRS 4, Decision to Race. The race organizers (organizing authority, race committee, technical committee, protest committee, host club, sponsors, or any other organization or official) will not be responsible for damage to any boat or other property or the injury to any competitor, including death, sustained as a result of participation in this event. By participating in this event, each competitor agrees to release the race organizers from any and all liability associated with such competitor's participation in this event to the fullest extent permitted by law.

22 **[NP] INSURANCE**

Each participating boat shall be insured with a valid third-party liability insurance policy with a minimum cover of \$2,000,000 CAD per event for Canadian boats and an adequate level of third-party liability insurance applicable in Canadian and US waters for non-Canadian boats.

Diagram 1

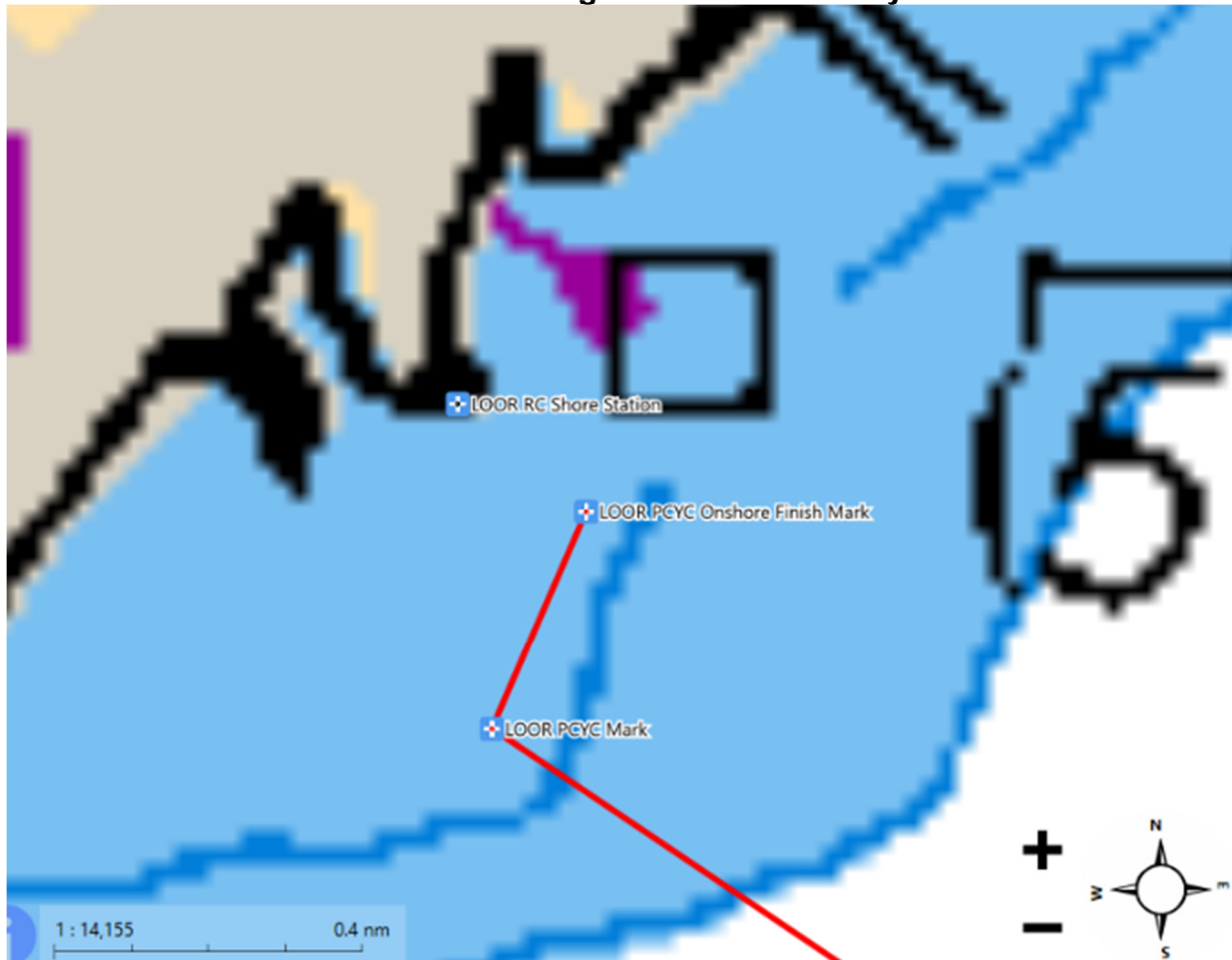
The Starting Area – All Races



The Starting Area

After the first warning signal for a race and prior to her warning signal, a sailboat shall keep clear of the starting area that extends one-quarter of the length of the starting line ahead of and behind the starting line. It shall also extend one-quarter of the length of the starting line past either end of the starting line

Diagram 2
The Finish – Long Distance Race Only¹



¹ Mark in diagram labelled LOOR PCYC Onshore Finish Mark is the PCYC Finish Mark for Onshore Finish

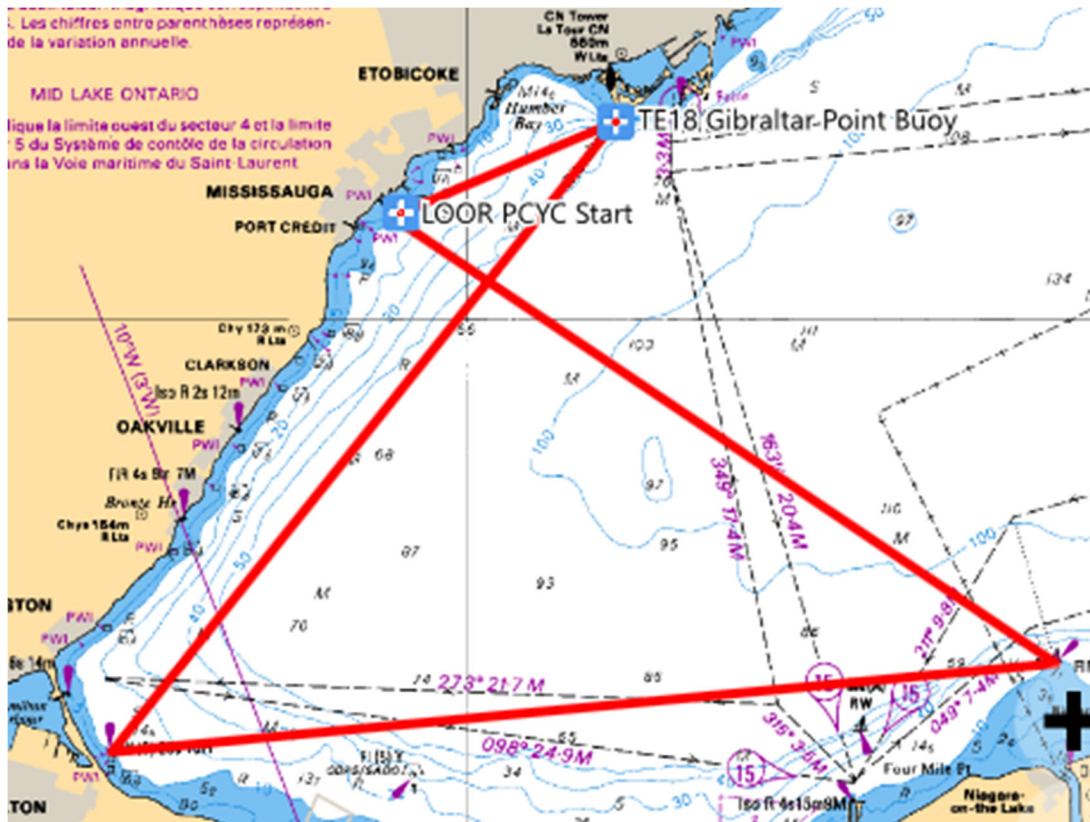
Diagram 3

Race 1 - Course Race



Diagram 4

Race 4 - Long Distance Race Course



Contact Information

LOSHRS

Web site www.loor.ca
Email to RC racecommittee@loor.ca
Phone 1-866-462-8828

PCYC

Web site www.pcyo.net
Phone 905-278-7911
FAX 905-278-2519