

J/70 Winter Series at Davis Island YC

With **Regattas** on Dec 8-9 2018, Jan 5-6 2019, Feb 9-10 2019

The Organizing Authority is the Davis Island Yacht Club and the J/70 Class Association



Sailing Instructions

1 RULES

The Regattas will be governed by the *rules* as defined in *The Racing Rules of Sailing* (RRS).

2 NOTICES TO COMPETITORS

- 2.1 Notices to competitors will be posted on the regatta notice board located on the West exterior wall on the lower level of the Clubhouse.
- 2.2 The race committee will use VHF channel **78** to communicate with competitors on the water.

3 CHANGES IN SAILING INSTRUCTIONS

Any changes will be posted before 0800 hours on the day it will take effect, except that any change in the schedule of races will be posted before 2000 hours the day before the change is to take effect.

4 SIGNALS MADE ASHORE

- 4.1 Signals made ashore will be displayed from the flagpole at the West end of the property.
- 4.2 When flag AP is displayed ashore, "1 minute" is replaced by "not less than 45 minutes" in the race signal.

5 RACING AREA

The racing area will be on Hillsborough Bay approximately 1-2 miles south of the Clubhouse, as shown in Attachment I.

6 CLASS FLAG

The class flag will be a white flag with the J70 insignia.

7 SCHEDULE

- 7.1 All boats must be in the water by 0800 on the first race day of a Regatta and shall remain in the water until the end of the Regatta, unless granted prior permission by the Race Committee.
- 7.2 First scheduled warning on Saturday and Sunday of each Regatta: 1000 hrs.
- 7.3 There will be no Warning Signal after 1400 on Sunday of each Regatta.
- 7.4 Seven races are scheduled for each Regatta.

8 MARKS

- 8.1 Windward and leeward marks will be green tetrahedrons. The offset mark will be a small orange ball. The starting and finishing marks will be yellow tetrahedrons and RC vessels.
- 8.2 New marks, as provided in SI 12, will be orange tetrahedrons.

9 THE COURSES

- 9.1 The diagrams and descriptions in Attachment II show the courses, including the approximate angles between legs and the order in which marks are to be passed.
- 9.2 If only one leeward mark is present it shall be rounded to port.
- 9.3 The course identifier, approximate magnetic bearing and distance in nautical miles to the first mark will be displayed from the race committee signal vessel prior to the warning signal for each race.

An example is shown below:

5	Five legs, finishing to windward
270	Approx magnetic bearing to windward mark
1.2	1.2 nm to windward mark

10 THE START

The starting line will be between a staff displaying an orange flag on the race committee signal vessel at the starboard end and either (a) the course side of the starting mark or (b) a staff displaying an orange flag on a vessel at the port end.

11 RECALLS

- 11.1 Individual and General Recall flags will also be displayed by the port end starting line vessel. **These are not official flags under RRS 29. The timing of these flags or lack of these flags shall not be considered grounds for redress, changing RRS 62.1.**
- 11.2 After a start the race committee will attempt to hail boats to be scored OCS, UFD or BFD on VHF using bow or sail numbers.
- 11.3 The timing and order of such hails or the failure of a boat to hear the hail shall not be considered grounds for redress, changing RRS 62.1.

12 CHANGE OF THE NEXT LEG OF THE COURSE

To change the next leg, the race committee will lay a new mark, move the finishing line or move the gate and remove the old mark as soon as practicable. When in a subsequent change a new mark is replaced, it will be replaced by an original mark.

13 THE FINISH

- 13.1 The finishing line will be between a staff displaying an orange flag on a race committee vessel and the course side of the finishing mark.
- 13.2 Flag A displayed with no sound while boats are finishing means "No more racing today."

14 TIME LIMITS

- 14.1 The time limit for the first boat to sail the course and finish is 90 minutes.
- 14.2 Boats still racing more than 30 minutes after the first boat sails the course and finishes will be scored TLE (Time Limit Expired) without a hearing. The score will be 2 points more than the last boat to finish. This changes RRS 35, A4, and A5.

15 PENALTY SYSTEM

- 15.1 The first two sentences of rule 44.1 are changed to: "A boat may take a One-Turn Penalty when she may have broken a rule of Part 2 or rule 31 while *racing*. However, when she may have broken a rule of Part 2 while in the *zone* around a *mark* other than a starting *mark*, her penalty shall be a Two-Turns Penalty."
- 15.2 Post-Race Penalties (Appendix T1) will apply.
- 15.3 Arbitration will be offered per Appendix T.
- 15.4 Breaches of NoR 1.4 (Bow Numbers), NoR 2 (Advertising), NoR 3 (Eligibility and Entry), NoR 5 (Registration and Measurement), NoR 8 (Launching and Moorage), NoR 12 (Insurance), SI 17 (Safety) and SI 18 (Radio Communication) will not be grounds for a protest by a boat, changing RRS 60.1.
- 15.5 A lesser penalty than DSQ (which may include no penalty) may be given at the discretion of the protest committee for an infringement of rules other than the rules of Part 2, changing RRS 64.1

16 PROTESTS AND REQUESTS FOR REDRESS

- 16.1 Protest forms are available in the Regatta Room. Protests shall be delivered there within the protest time limit which is **45** minutes after the race committee finish boat docks after the last race of the day.
- 16.2 The race committee will post a list of penalties being assigned by the race committee prior to the end of protest time limit. The deadline for requesting redress based on these scores will be either 30 minutes after posting of the penalty notice or the protest time limit, whichever is later. This changes RRS 62.2.
- 16.3 Notices will be posted promptly after the receipt of a protest or a request for redress to inform competitors of hearings in which they are parties or named as witnesses. Hearings will be held in the Regatta Room in approximately the order of receipt beginning as soon as possible after their receipt.
- 16.4 On the last day of each Regatta a request for redress based on a jury decision shall be delivered no later than 30 minutes after the decision was posted, changing RRS 62.2.

17 SAFETY

- 17.1 Prior to the warning signal for the first race of each day in which it intends to compete, each boat is requested to check in by VHF or sail by the race committee signal boat and hail its sail number.
- 17.2 A boat retiring from a race or leaving the racing area early shall promptly notify the race committee either by hail, over VHF, or by telephone to the Clubhouse at (813) 251-1158.

18 RADIO COMMUNICATION

A boat shall neither make nor receive radio, phone or other data transmissions while racing not available to all boats, except in an emergency

19 SCORING

- 19.1 Seven races are scheduled for each Regatta, 21 total races for the J/70 Winter Series.
- 19.2 For each Regatta:
- 19.2.1 If 5 or fewer races are completed, a boat's Regatta score will be the total of her race scores. If 6 or more races are completed, a boat's Regatta score will be the total of her scores excluding her worst score.
 - 19.2.2 Two completed races are necessary to constitute a Regatta.
- 19.3 To be scored for the J/70 Winter Series:
- 19.3.1 Competitors must register, pay and compete in a minimum of two Regattas.
 - 19.3.2 The helmsman must be the same in all qualifying Regattas.
 - 19.3.3 The same boat must be used in all qualifying Regattas.
 - 19.3.4 A boat's J/70 Winter Series Score will be the total of her finishing positions in her two best qualifying Regattas. If there is a tie between two or more boats, each boat's finishing position in her two best qualifying Regattas shall be listed in order of best to worst. At the first point(s) where there is a difference the tie shall be broken in favor of the boat(s) with the best scores(s). If a tie remains between two or more boats, they shall be ranked in order of their last qualifying Regatta. If a tie still remains, trophies shall be awarded to all tied competitors.

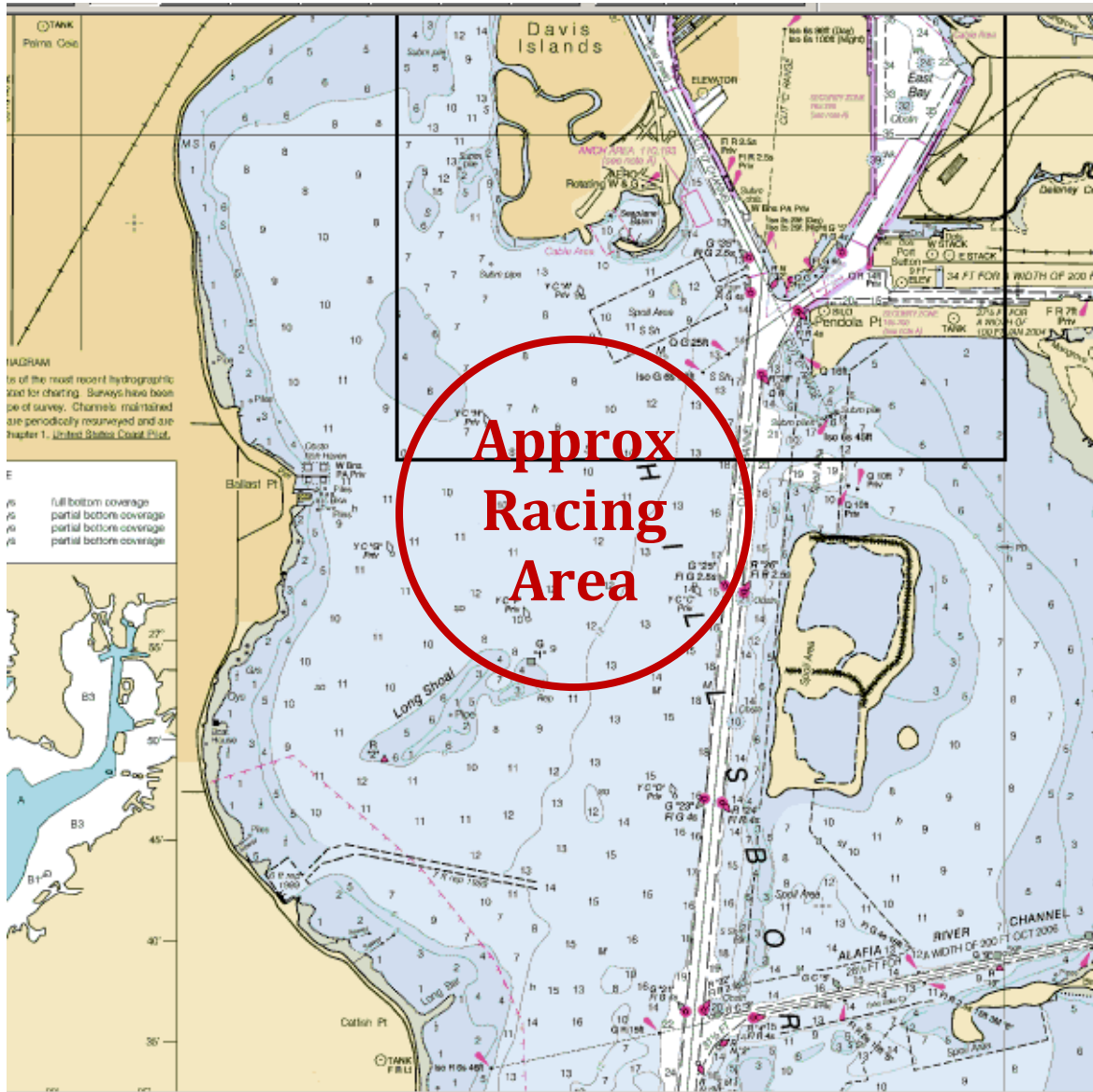
Thanks to our sponsors:



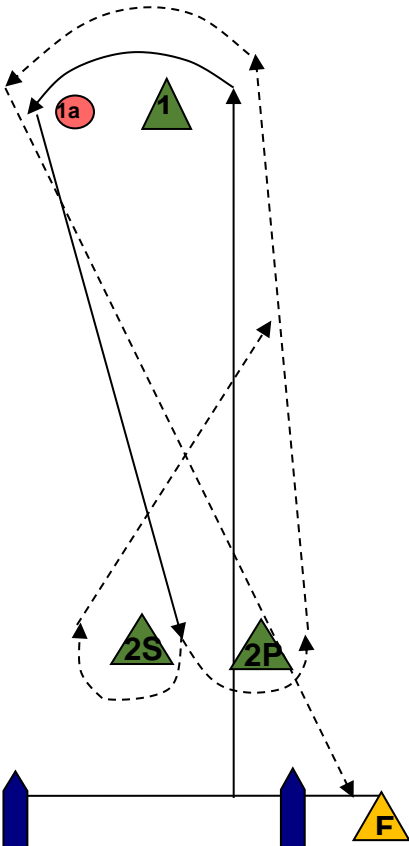
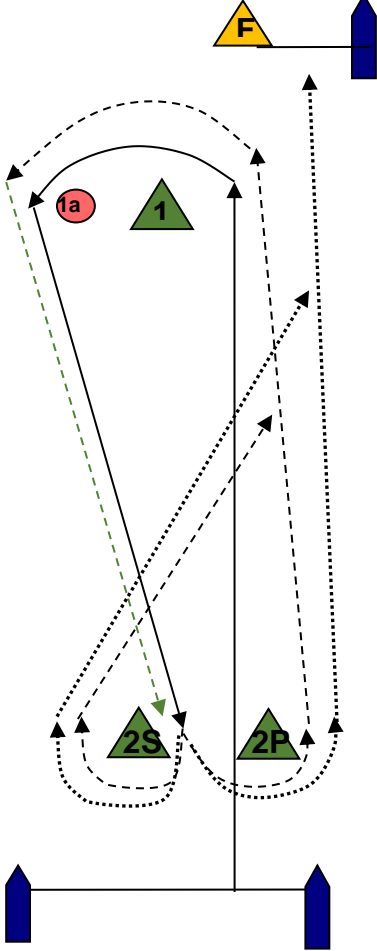
SAIL22

RaceRIGHT

Attachment I – Approximate Racing Area



Attachment II – Sample Course Diagrams

Course 4		Course 5
		
<p>Start, 1 (port), 1a (port), between 2S and 2P, 1(port), 1a (port), finish</p>		<p>Start, 1 (port), 1a (port), between 2S and 2P, 1(port), 1a (port), between 2S and 2P, finish</p>

Other possible courses:

Course 3: Start - 1 - 1a - Gate – Finish (Upwind)

Course 6: Start - 1 - 1a - Gate - 1 - 1a - Gate- 1 - 1a – Finish (Downwind)

Course 7: Start – 1 – 1a – Gate – 1 – 1a – Gate- 1 – 1a – Gate – Finish (Upwind)