



Sachem's Head Yacht Club



2018 Coastal Classic

Notice of Race

Date: Saturday August 18th, 2018

Entries: Close at noon August 17th, 2018. A \$10 late fee will apply for entries received after August 10th

Rules: This regatta will be governed by the Racing Rules of Sailing 2017-2020, the prescriptions of US Sailing, the SHYC Coastal Classic Sailing Instructions, and this Notice of Race

Start Time: First warning is scheduled for 1330.

Courses: The course for the Sachems Head Coastal Classic will be a “coastal race” using a combination of drop marks, fixed government buoys, and geographic features. Target length is 10-20 miles depending on conditions and class designation. One race is scheduled.

Start Area: The starting area will be SSW of Sachem's Head Harbor between R Bell 22 - Goose Rock Shoals and R Nun 20 - Chimney Corner Reef

Finish Line: The finish line will be between an orange flag flown from at staff at the SE end of the Sachems Head harbor break water and a drop mark bearing approx. 270 degrees from the staff

Sailing Instructions: Will be available August 8st, 2018 at www.shyc.club, posted electronically and emailed to all entrants.

Eligibility: Any yacht with a current, valid, ECSA-PHRF rating certificate will be allowed to sail. Additionally, any one design with a PHRF base boat rating will be welcomed for racing in their own class. Four or more paid entries of equal rating will have a separate class.

Safety Recommendation: The OA recommends participating vessels adhere at a minimum to the 2018 Nearshore Requirements of the Safety Equipment Rules as put forth by US Sailing.

Classes: Spinnaker and non-spinnaker classes will be determined by the regatta committee, using ECSA-PHRF ratings and taking boat type into consideration.

Facilities: A limited number of moorings will be available on a first come, first served basis. SHYC facilities will be open to regatta participants August 17th-19th. An “anchor watch” and launch will be provided on the day of the regatta for any regatta participants choosing to anchor in the Joshua Cove mooring field. Dockage may also be found at the Guilford Yacht Club.

Scoring: Will be done by a PHRF-base “time-on-time” system and RRS Appendix A. One race shall constitute the regatta and is an ECSA Offshore Circuit race for qualifying yachts.

Party, Results and Prizes: Results will be announced at the post-race party at Sachem's Head Yacht Club. Prizes will be awarded to the top three finishers in each class. A special trophy will be awarded to the yacht with the best corrected time whose crew consists of at least 50% junior sailors (under 20 years of age), the OA must be notified upon entry of intended eligibility for this trophy.

Fees: Race fee: \$40 per boat (\$50 after August 10th, 2018)

Party fee: \$15 per person with entry, \$20 for regatta participants at the door

Tides: High Tide: 521 & 1746

Low Tide: 1123

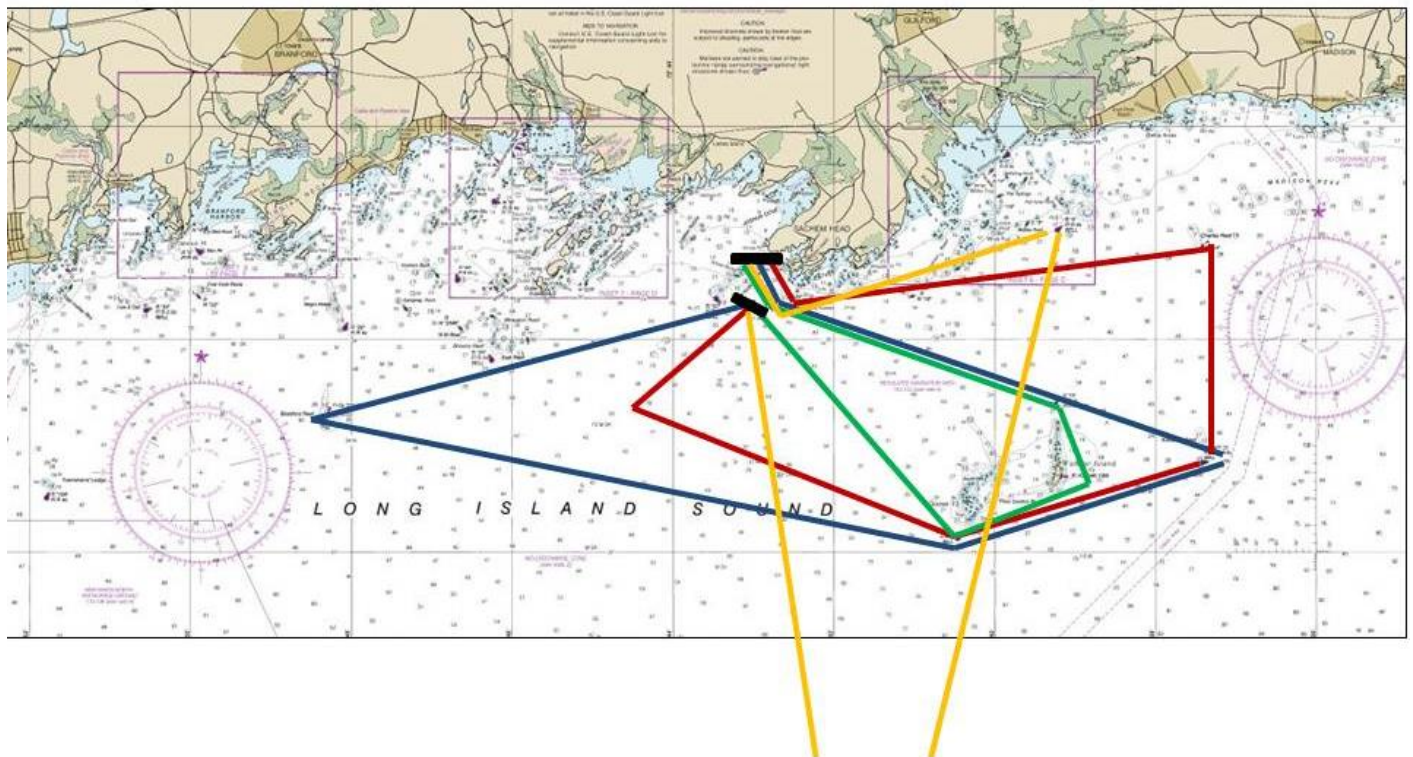
Entries: Please enter online www.yachtscoring.com or follow the link at www.shyc.club

Organizing Authority: Sachem's Head Yacht Club

Chimney Corner Circle [mailing: PO Box 124]

Guilford, Connecticut 06437

Potential Course Sketches – Detailed course descriptions will be posted in the SI's



Questions can be sent by email to SHYCCoastalClassic@gmail.com

<http://www.charts.noaa.gov/OnLineViewer/12373.shtml>