



**J/109 East Coast Championship – Sailing Instructions**  
**Ida Lewis Yacht Club: 8-9 September 2018**



**1 RULES**

- 1.1 The regatta will be governed by the *rules* as defined in the [The 2017- 2020 Racing Rules of Sailing \(RRS\)](#).
- 1.2 [RRS 44.1](#) is modified by [US Sailing Prescriptions Appendix V1](#), Alternative Penalties, Penalty at the Time of an Incident, and [US Sailing Prescriptions Appendix V2](#), Alternative Penalties, Penalty Taken After a Race.
- 1.3 Each boat shall carry a VHF radio capable of receiving and transmitting on all standard VHF channels.

**2 NOTICES TO COMPETITORS**

- 2.1 The Official Notice Board will be the yachtscore.com website for the event: <https://yachtscore.com/emenu.cfm?eID=4695>. Copies of notices to competitors will be posted on the notice board at the ILYC clubhouse.
- 2.2 Protest Committee notices, including the schedule of protest hearings and requests for redress, will be posted on the Official Notice Board and on the Jury Notice Board located at Ida Lewis YC.

**3 CHANGES TO THE SAILING INSTRUCTIONS**

Any change to the sailing instructions will be posted by 0800 of the day it will take effect, except that any change to the schedule of races will be posted by 1800 or one hour after the signal boat has docked, whichever is later on the day before it will take effect.

**4 SIGNALS MADE ASHORE**

- 4.1 Signals made ashore will be displayed from the flagpole at Ida Lewis YC.
- 4.2 When flag “AP” is displayed ashore with two sound signals, the harbor start is postponed. In addition, “1 minute” is replaced with “not less than 90 minutes” in race signals AP.

**5 SCHEDULE OF RACES**

<b>Friday</b>	<b>7 September</b>	<b>Saturday</b>	<b>8 September</b>
1400-1730	Registration Check-in at ILYC	1100	Warning Signal for First Race
1730-1800	Skippers Meeting at ILYC Clubhouse Followed by reception at ILYC	1600	No warning signal shall be made after this time
		After Racing until 1800	No-Host Social at ILYC
<b>Note</b>	The number of races expected to be sailed each day is three. The race committee may adjust this as conditions require.	<b>Sunday</b>	<b>9 September</b>
		1100	Warning Signal for First Race
		1500	No warning signal shall be made after this time
		After Racing	Awards Presentation at ILYC



## J/109 East Coast Championship – Sailing Instructions Ida Lewis Yacht Club: 8-9 September 2018



### 6 RACING AREA

Rendezvous locations for the race areas are shown in Appendix 1.

Area “A” – Rose Island

Area “B” – Jamestown

Area “C” – RI Sound

Area “D” – Vicinity 200 degrees, one nautical mile (1nm) from Halfway Rock

### 7 THE COURSES

- 7.1 The courses for drop mark races for each race area are described in Appendix 2 of the sailing instructions.
- 7.2 Courses using government marks will be identified on a course board using buoy designations as listed in the South Bay Race chart. Copies of the chart will be provided at the Skipper’s Meeting and are available from Sail Newport. The South Bay Race Chart is not intended for vessel navigation.

### 8 MARKS

- 8.1 The start and finish marks will be inflated orange marks.
- 8.2 The windward and gate marks will be orange tetrahedrons
- 8.3 The offset mark will be an orange ball.
- 8.4 A change mark will be a yellow tetrahedron. In the event of a subsequent change, an original mark will be used.

### 9 THE START

- 9.1 Races will be started in accordance with [RRS](#) 26. The flag used for the warning signal will be either code flag J or the J109 class flag.
- 9.2 The starting line will be between a staff displaying an orange flag on the signal boat and an orange start mark. The orange start mark may be replaced by a staff displaying an orange flag on a race committee boat anchored at the pin end.

### 10 RECALLS

- 10.1 The race committee will attempt to hail boats OCS over the regatta VHF channel. Sail numbers and/or bow numbers, if issued, will be used to identify boats OCS. The race committee will specify whether the number being hailed is a bow or sail number.
- 10.2 The timing and order of such hails or failure of a boat to hear such a hail shall not be grounds for redress. This changes [RRS](#) 60.1(b) and 62.1(a).

### 11 CHANGE OF THE NEXT LEG OF THE COURSE

- 11.1 See SI 8.4.
- 11.2 The race committee will endeavor to broadcast course changes over the regatta VHF channel.



## J/109 East Coast Championship – Sailing Instructions Ida Lewis Yacht Club: 8-9 September 2018



### 12 THE FINISH

- 12.1 The finishing line will be between a staff displaying a blue flag on the finishing boat and the course side of the finish mark.
- 12.2 An alternate finish may be set for the final race of the day as listed in Appendix 2. The finish shall be a line between G“3” Fl G 2.5 sec Bell off Goat Island and a staff flying an orange flag at the north end of the deck at Ida Lewis Yacht Club. A yellow inflatable buoy will be placed at approximately 41° 28.81'N, 071° 19.61'W. This buoy, which shall be left to starboard when finishing, is a mark of the course but not part of the Finish Line. It is intended to provide a rough approximation of the angle of the finish line.

### 13 GOVERNMENT MARKS

Government buoys have no required side except when specified as marks of the course. Caution should be exercised for safe navigation.

### 14 PENALTY SYSTEM

Appendix V1 and V2 will apply.

### 15 TIME LIMIT

- 15.1 The time limit for the first boat to sail the course and finish is three hours.
- 15.2 Boats finishing later than 30 minutes after the first boat sails the course and finishes will be scored TLE. This changes [RRS 35](#).

### 16 PROTESTS

- 16.1 A boat intending to protest shall notify the race committee of its intention after completing the race in question and identify the protested boat or boats.
- 16.2 Completed protest forms shall be delivered to the protest desk located at ILYC within the protest time limit, which is one hour after the race committee signal boat docks.
- 16.3 The protest time limit and a list of protests filed will be posted promptly to inform competitors of hearings in which they are parties.
- 16.4 Protest hearings will be held at the ILYC clubhouse.

### 17 ARBITRATION

- 17.1 Arbitration may be held in accordance with Appendix T.
- 17.2 One representative from each boat will meet with an arbitrator unless the protestor requests that the protest be withdrawn.
- 17.3 The arbitrator will not be a member of the jury that hears the protest but will be permitted to observe the testimony given to the jury and offer testimony. This changes [RRS 63.3\(a\)](#).

### 18 SCORING

- 18.1 One race is required to constitute a series.
- 18.2 A boat's series score will be the total of her race scores. This changes [RRS A2.1](#).



## J/109 East Coast Championship – Sailing Instructions Ida Lewis Yacht Club: 8-9 September 2018



- 18.3 A boat that does not finish within the time limit shall be scored time limit expired (TLE) and will receive points equal to the number of finishers plus two. This changes [RRS](#) 35, A4,1, A4,2, A5, and A11.

### 19 CREW DECLARATION AND LIABILITY WAIVER

- 19.1 The Skipper shall declare all crew members by listing them on the regatta Yachtscoring site (<https://yachtscoring.com/emenu.cfm?eID=4695>).
- 19.2 The Skipper and all crew members shall complete emergency contact information and the online waiver and liability form on the regatta Yachtscoring site (<https://yachtscoring.com/emenu.cfm?eID=4695>).

### 20 RADIO COMMUNICATION and DATA TRANSMISSION

Except in an emergency, a boat shall neither make radio transmissions while racing nor receive radio communications not available to all boats. This restriction also applies to mobile telephones. In addition, except in an emergency, a boat shall neither make nor receive data transmissions while racing.

It is the intent of the Race Committee to utilize a VHF radio as its primary method of communications during racing. Competitors are invited to listen to all RC communications on the regatta channel in the hopes that a clearer understanding of the Committee's intentions will result in better racing for all. These broadcasts are available as a courtesy only. Failure to receive or properly interpret these communications shall not be grounds for redress under [RRS](#) 62.

### 21 SAFETY REGULATIONS

- 21.1 Prior to the Warning Signal for the first race of each day, every boat shall sail by the stern of the signal boat and hail its sail number (please ensure an acknowledgement from the race committee). Check-in for subsequent races is required only for boats that did not sail the previous race. Any boat displaying sail numbers not matching their registered hull number shall not be scored. Any two or more boats displaying matching sail numbers during one or more races shall not be scored.
- 21.2 A boat that retires from a race shall notify the race committee as soon as possible.
- 21.3 Competitors are reminded that Narragansett Bay is a restricted channel. Sailing vessels do not have the right of way over a vessel under power that is restricted in her ability to maneuver.
- 21.4 In accordance with RI Boating Regulations, all boats must stay at least 50 feet away from a diver-down flag, unless doing so would prevent safe navigation.

### 22 OBSTACLES

- 22.1 Competitors are reminded that while Narragansett Bay is a deep body of water, some of our race courses bring the fleet close to navigation hazards, including but not limited to marked and unmarked rocks and pilings, islands, bridges, concrete bulkheads, and rock breakwaters.
- 22.2 Sailing inside the rocks known as the "Dumplings" is prohibited.



**J/109 East Coast Championship – Sailing Instructions**  
**Ida Lewis Yacht Club: 8-9 September 2018**

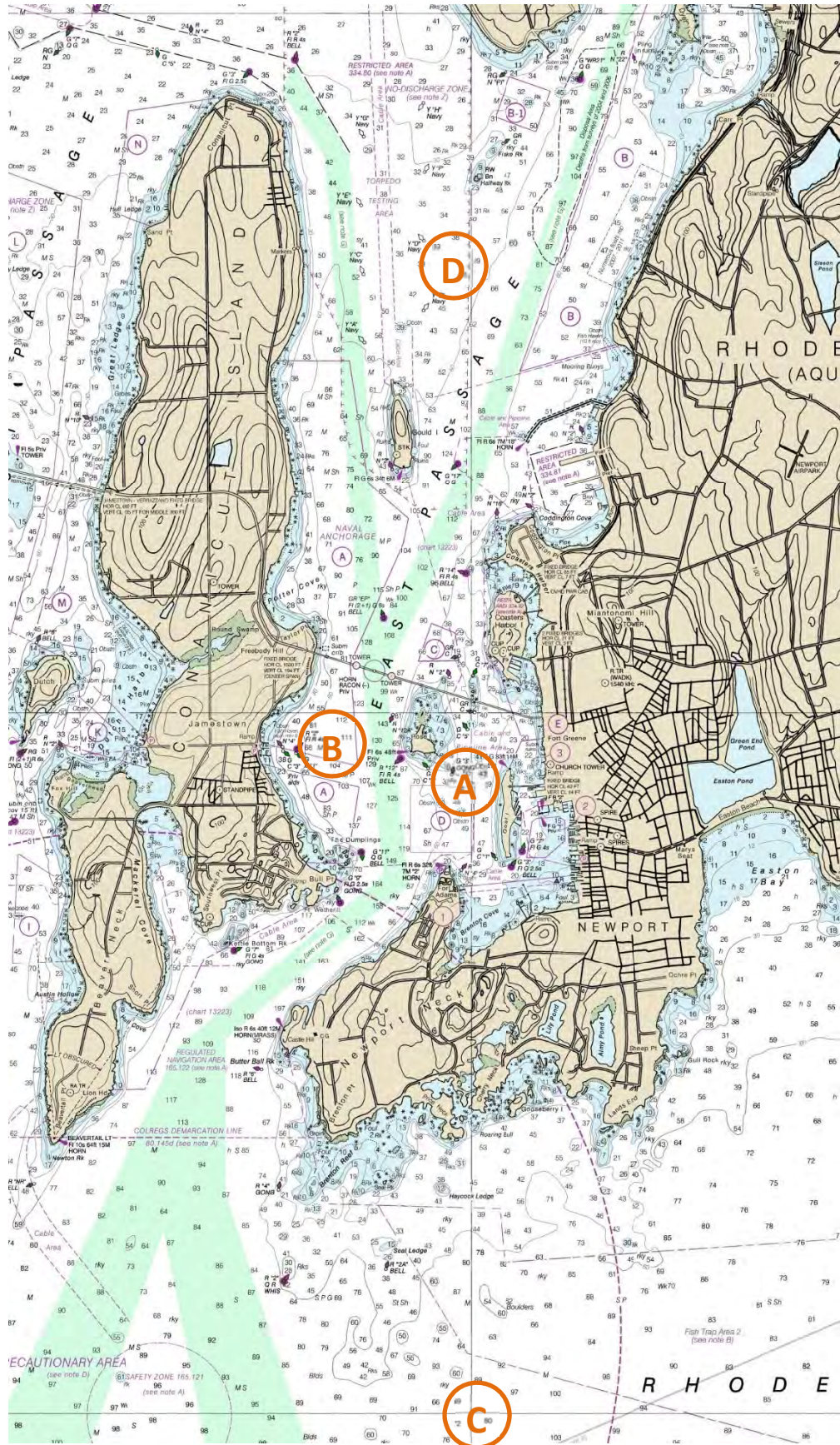


- 22.3 A security zone extends along the west shore of the Navy Base from the breakwater to the War College and is marked by a series of white buoys. Boats shall not sail to the east of the line between any two of these white buoys.
- 22.4 Boats shall only sail under the three center spans of the Newport Bridge when crossing under the bridge.
- 22.5 A breach of SI 22 may only be protested by the race committee. This changes RRS 60.1(a).



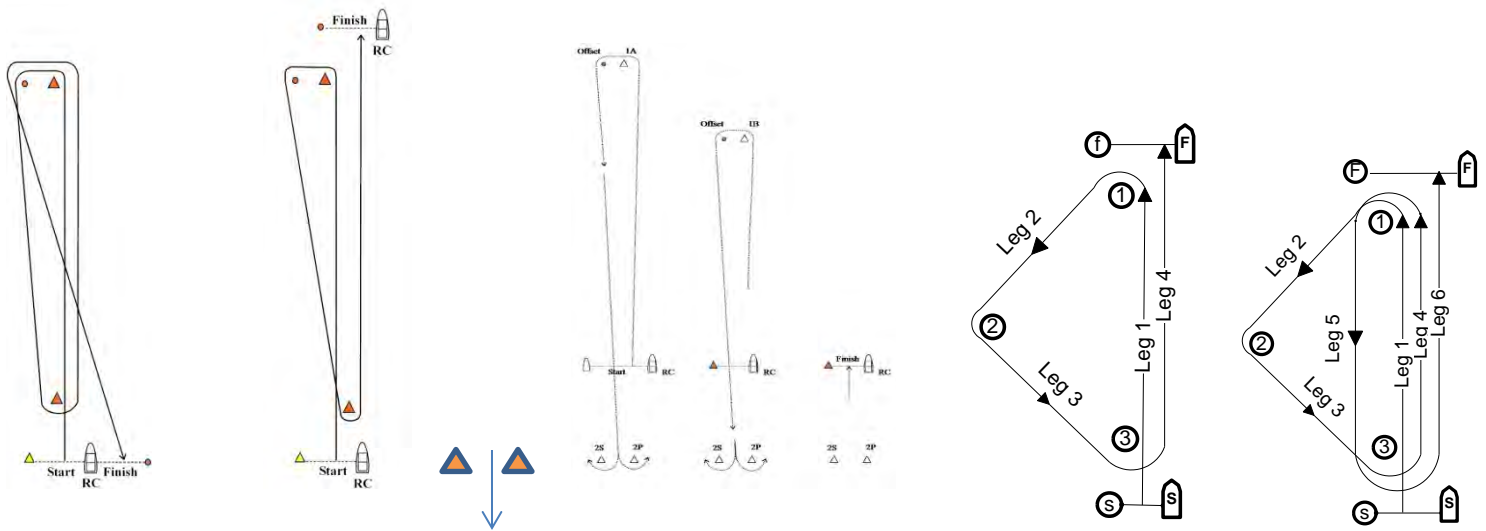
# Appendix 1

## Rendezvous Locations



## Appendix 2 - Drop Mark Courses

### Course Diagrams



**Course "W"**

Even # legs

**Course "W"**

Odd # legs

**Gate Marks**

**Course "V"**

**Course "K"**

**Course "O"**

### A COURSES

- A1. Course "W" is a Windward/Leeward course with a windward offset mark.
- A2. Course "V" is a Windward/Leeward course with a windward offset mark, gates will be 0.5 NM below the start/finish line.
- A2. Course "O" is a Triangle/Windward Leeward/Windward course.
- A3. Course "K" is a Triangle/Windward/Leeward course.
- A4. - The leeward mark for Courses "W", "O", and "K" will be an inflatable mark(s) set approximately 0.10 NM to windward of the starting line.
  - The leeward mark for course "V" will be 0.5 NM below the start/finish line.
  - A gate mark may be used for course "W" and "V"
- A5. The course designation, distance and bearing to the windward will be displayed on a white board.
- A6. Marks, including the windward offset mark, shall be rounded in order and always left to port, except that a gate, when used, shall be rounded as described in rule 28.1(c).
- A7. Long Windward Mark
  - For course "W" with an even number of legs, the Race Committee may set a long windward mark and a short windward mark.
  - The distance displayed will be to the SHORT windward mark. The long windward mark will be on the same bearing, 0.5 NM beyond the short windward mark.
  - There will be no offset mark at the long windward mark.
  - If flag "D" is displayed with course signals, that class will use the LONG windward mark for each weather leg of that race. If flag "D" is not displayed with the course signals, that class will use the short windward mark for each weather leg of that race.
- A8. **Special Finish Mark "F"**
  - If flag "F" is displayed for the final race of the day, the finish line will be in Newport Harbor per the Sailing Instructions.