

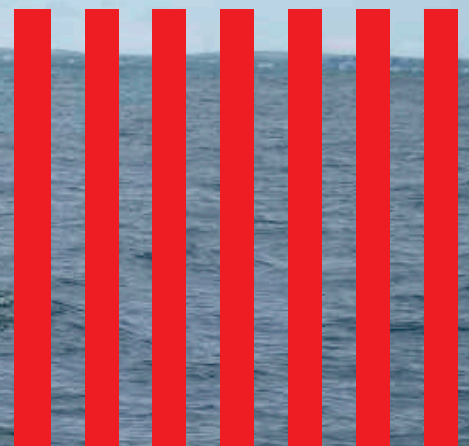
# SAILING INSTRUCTIONS



# Figawi

47TH ANNUAL

MAY 25-28, 2018



## FRIDAY, MAY 25

- 0730 – 2400 **HYC Launch hours Dock access gate is locked at 2400.**
- 1500 – 2000 **Registration and 47th Annual Figawi Kickoff Party** Hyannis Yacht Club, 490 Ocean Street, Hyannis, MA  
Figawi Merchandise on sale / Music by Hennessy  
Town of Barnstable weekend parking passes available for purchase. Take note of weekend parking policy.  
*Note: There is no formal captains meeting.*

## SATURDAY, MAY 26

- 0600 – 2000 **HYC Launch hours**  
Breakfast is available for purchase on the patio
- 0955 **Warning Signal Hyannis to Nantucket race**  
Please consult Sailing Instructions for Race specifics
- 1000 **First Sailboat Start Time**  
Please consult Scratch Sheets for individual starting times
- 1200–1700 **Figawi Race Office** Veronica's Cottage, Swains Wharf, Nantucket
- 1300–1800 **Figawi Merchandise Tent** Corner of New Whale Street and Swain's Wharf, Nantucket
- 1400ish (after they finish) **Nantucket welcomes and honors Holidays for Heroes** veteran guests sailing on Perfect Summer.  
All are welcome! Joined by the crew, local FD, PD, and Nantucket dignitaries. Swains Wharf slip #1421
- 1800–1900 **Sponsor & Media Appreciation Reception** VIP Tent  
Figawi access pass and VIP bracelet required for admittance
- 1900–2200 **Race Weekend Tent Party**  
Featuring music by BearFight in the big tent / Featuring music by Brian Glowacki in the VIP tent  
Event bracelet and ID to enter (21+)

## SUNDAY, MAY 27

- 1000–1500 **Figawi Race Office** Veronica's Cottage, Swains Wharf
- 1000–1800 **Figawi Merchandise Tent** Corner of New Whale Street and Swain's Wharf
- 1000 **Band of Angels hosts a Joke Telling Session** Presented by Baxters Boathouse  
Located in the Figawi Main Tent / Event bracelet and ID to enter (21+)
- 1130 **Figawi High School Invitational** Presented by Schwab  
Doublehanded sailing regatta for Cape Cod and the Islands' top High School sailing team members Sponsored by Charles Schwab, Harbor Fuel, Nantucket Community Sailing, Great Harbor YC Watch the kids race off the Nantucket Boat Basin docks
- 1230 **Figawi Marketplace**  
Featuring Figawi sponsors merchandise / Light food and cocktails  
Located in the Figawi Main Tent / Event bracelet required or pay at the door
- 1300 **Memorial Day Parade**  
Parade begins at the Legion Hall on Washington and proceeds through town to Prospect Cemetery for a short ceremony.
- 1630–1730 **Prize Giving for the Hyannis-Nantucket Race**  
**Figawi High School Invitational Awards** kick off the event  
Sponsored by Pairpoint Glass  
Located in the Figawi Main Tent. All welcome.
- 1900–2200 **Race Weekend Tent Party**  
Featuring Music by BearFight / Featuring music by Brian Glowcki in the VIP tent  
Event bracelet and ID to enter (21+)

## MONDAY, MAY 28

- 1930 **Warning Signal for Figawi PHRF Race**  
Race begins in the vicinity of the Nantucket MO(A) / Please consult Sailing Instructions  
Awards will be mailed directly to winners
- 1400 **Post Race at Baxter's Boathouse**  
177 Pleasant Street, Hyannis / Merchandise will be on sale

# SCHEDULE

47TH ANNUAL  
FIGAWI RACE  
WEEKEND

## 47TH ANNUAL FIGAWI RACE WEEKEND

### 1. RULES

Figawi will be governed by the Racing Rules of Sailing. Note RRS Fundamental Rule 4- "The responsibility for a boat's decision to participate in a race or to continue racing is hers alone."

### 2. EQUIPMENT

All personnel on deck shall wear personal flotation while starting and finishing without exception, and at all other times except when the captain of the boat directs that it may be set aside.

All boats must comply with World Sailing Special Regulations Category 4 as posted on the Figawi website (figawi.com). In addition all boats must carry an EPFS (Electronic Position Fixing System) e.g. GPS.

Entries of classic yachts built before the introduction of Special Regulations may be exempted from the lifeline requirement at the sole discretion of the race committee.

**Please pay special attention to the following provisions:**

- 1. All boats must have lifelines in accordance with Regulation 3.14.**
- 2. All boats must carry marine VHF radios in accordance with Regulation 3.29.**
- 3. All boats must have sail numbers (NOT JUST MANUFACTURERS NUMBERS OR LOGOS) in accordance with Regulation 4.01. NO SAIL NUMBER = NO SCORE.**
- 4. All boats must carry personal equipment (lifejackets, etc.) in accordance with Regulation 5.**
- 5. Crews shall practice the drill for crew overboard recovery at least once annually in accordance with Regulation 6.04.**

Only the Race Committee may protest a violation of this section. This changes RRS 60.1.

Any violation of this section may be penalized at the discretion of the jury.

### 3. NOTICES TO COMPETITORS

**HYANNIS YACHT CLUB:** the official notice board will be located in the vicinity of the Steward's office.

**NANTUCKET BOAT BASIN:** The official notice board will be located outside the Main Entrance of the Figawi Tent.

**CHANGES TO SAILING INSTRUCTIONS:** will be posted on the official notice board before 0800 on the day they take effect.

### 4. POSTPONEMENT

In the event of a postponement ashore the 'AP' flag will be flown from the yardarm of Hyannis Yacht Club. The warning signal will be made not less than one hour after the lowering of 'AP' ashore.

In the event of a postponement on the water the warning signal will be made one minute after the lowering of 'AP'.

In the event that a postponement ashore or on the water delays the scheduled first start signal- the amount of this delay must be added to each boat's scheduled start time as printed on the scratch sheet. This time will be announced on VHF channel 71. This time will also be sent out via a robocall and text to the on-island cell phone used on the registration form. Once the pursuit start is underway - should the start have been previously delayed- the Race Committee Start Boat will fly Flag 'F' to call competitor's attention to the necessity to adjust starting times.

### 5. OFFICIAL TIME

The Figawi Race will use GPS time as read from the Figawi Race Committee Boat's GPS. There will be three radio time checks at 0930, 0945, and 0955.



# INSTRUCTIONS

## 47TH ANNUAL FIGAWI RACE WEEKEND

### 6. THE START

**PURSUIT START – Saturday, May 26, 2018**

**STARTING AREA:** South of Hyannisport Jetty. The start line will be between an orange flag on the Figawi Race Committee Start Boat and the orange tetrahedron buoy to port.

**RESTRICTED AREA:** The Restricted Area will be bounded by the Race Committee Start Boat, the orange tetrahedron starting mark, and two yellow tetrahedrons (see diagram). Boats shall not enter the restricted area until 5 minutes before their start. Any boat entering this area before this time will be subject to protest and disqualification. Only the Race Committee may protest a violation of this rule. This changes RRS 60.1.

**STARTING TIMES:** Figawi is a pursuit race with handicaps built in to the starting time of each boat. For each boat's start time, refer to the scratch sheet. Starting times will be one of seven times, depending on the course chosen for that class. All classes will likely not sail the same course. The course chosen for each class will be announced on VHF 71 three times: 9:30, 9:45, and 9:55. The course will also be delivered via the automated call and text system to the cell number you provided.

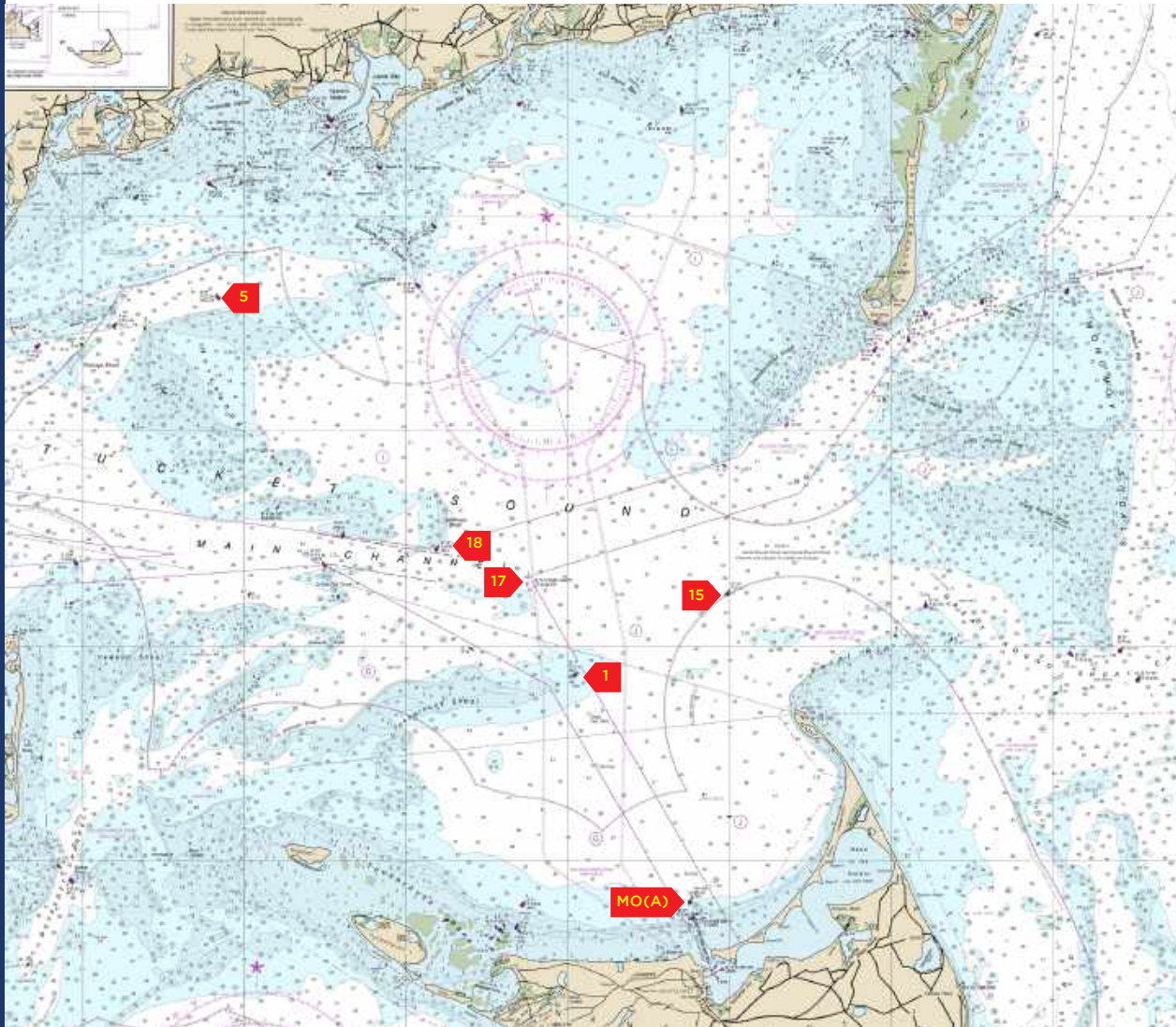
WARNING SIGNAL	0955	NUMERAL PENNANT 1 1 SOUND SIGNAL
PREPARATORY SIGNAL	0956	FLAG 'P' 1 SOUND SIGNAL
ONE MINUTE TO START	0959	FLAG 'P' REMOVED 1 SOUND SIGNAL
START	1000	NUMERAL PENNANT 1 REMOVED 1 SOUND SIGNAL FIRST BOAT STARTS

### 7. OCS BOATS

Due to the pursuit start, boats on the course side of the start line at their start time **will not be notified per RRS 29.1**. The Race Committee **may** notify such boats on VHF 71 **if practical**. This changes RRS 29.1.



# 47TH ANNUAL FIGAWI RACE WEEKEND



**THIS RENDERING IS FOR GUIDANCE ONLY, IS NOT TO SCALE, AND IS NOT TO BE USED FOR NAVIGATION.**

## 8. THE COURSES

### ALL CLASSES-ALL COURSES

There will be a large orange inflatable mark located approximately .5 mile at approximately 190-200 degrees from the starting line. All competitors in all classes, sailing all courses, must leave this mark to starboard when exiting the start area enroute to the first mark listed in each course. This mark is to be considered the first mark of each course and must be honored as part of the course.

#### COURSE 1:

ODAS #17 to Starboard, Finish between MO(A) Bell (RW-NB) to Starboard and Committee Boat, Nantucket.

#### COURSE 2:

Bell #5 to Port (North of Horseshoe Shoal), Finish between MO(A) Bell (RW-NB) to Starboard and Committee Boat, Nantucket.

#### COURSE 3:

Bell #5 to Port (North of Horseshoe Shoal), ODAS #17 to Starboard, Finish between MO(A) Bell (RW-NB) to Starboard and Committee Boat, Nantucket.

#### COURSE 4:

Bell #5 to Port (North of Horseshoe Shoal), #15 (North of Great Point) to Starboard, Finish between MO(A) Bell (RW-NB) to Starboard and Committee Boat, Nantucket.

#### COURSE 5:

Tuckernuck Shoal Bell #1 to Port, #15 (North of Great Point) to Starboard, Finish between MO(A) Bell (RW-NB) to Starboard and Committee Boat, Nantucket.

#### COURSE 6:

Tuckernuck Shoal Bell #1 to Starboard, Half Moon Shoal Bell #18 to Port, Finish between MO(A) Bell (RW-NB) to Starboard and Committee Boat, Nantucket.

#### COURSE 7:

Bell #5 (North of Horseshoe Shoal) to Port, #15 (North of Great Point) to Starboard, Tuckernuck Shoal Bell #1 to Port, Finish between MO(A) Bell (RW-NB) to Starboard and Committee Boat, Nantucket.

Courses will be announced on VHF 71 three times: 9:30, 9:45, and 9:55. Courses will also be delivered via the automated call and text system to the cell number you provided.

**COURSES WILL NOT BE POSTED ON THE RACE COMMITTEE START BOAT.**

# INSTRUCTIONS

# 47TH ANNUAL FIGAWI RACE WEEKEND

## 9. POSTED COURSE

Any boat determined by the Race Committee to have violated RRS 28.1 (any boat who has not sailed the course posted for its' class) may be DSQ'd without a hearing. This changes RRS 63.1.

## 10. SHORTENING COURSE

At any rounding mark- a Committee or Patrol Boat displaying flag 'S' with two sound signals as the first boat approaches means, " The race has been shortened- finish between this flag and the nearby rounding mark." In the event of a shortened course, time allowances will need to be recalculated to the correct allowance for the length of the actual course sailed. This means that the final race results may not be in the order that boats crossed the shortened course finish line.

## 11. PENALTIES

The Scoring Penalty, RRS 44.3 will apply to a boat that breaks a rule of RRS Part 2.

## 12. TIME LIMIT

The time limit is 1800. If no boats in a class sail the course and finish before 1800—all boats in that class will be scored DNF. If the first boat to finish in a class sails the course and finishes before 1800- any boat in her class that fails to sail the course and finish within 1 hour of the first finish will be scored DNF. The Committee Boat may leave station after 1700. Boats not finished by 1700 shall report their status on VHF 71. These times may be adjusted by a race committee announcement on VHF 71. In the event the Committee Boat is not on station competitors may take their own finish times by leaving Nantucket MO (a) close aboard to starboard and reporting their finish time to Race Headquarters. Boats retiring from the race must notify the race committee on VHF 71 or by calling 508-221-6891.

## 13. PROTESTS

Protest forms will be available at Race Headquarters, Veronica's Cottage, Swain's Wharf. All protests shall be filed in accordance with RRS 61 and be delivered to

the Figawi Race Office within one hour of the time the Committee Boat docks.

Protests will be heard Sunday morning beginning at 0900. Time and place of hearings will be posted on the Official Notice Board located outside the Main Entrance of the Figawi Tent.

## 14. RADIO

The race committee channel is VHF 71. Competitors must monitor this channel throughout the race. There will be three time checks: 0930, 0945, 0955. This is a courtesy only. The course chosen for each class will be announced on VHF 71 three times: 9:30, 9:45, and 9:55. The course will also be delivered via the automated call and text system to the cell number you provided. During the race, information regarding shortening or abandonment, and emergency/safety information will be broadcast on this channel.

## 15. FIGAWI PENNANT

All boats racing must fly the official Figawi pennant from their backstay. Only the Race Committee may protest a violation of this section. This changes RRS 60.1.

## 16. TROPHY PRESENTATION

At the Figawi Tent, Nantucket Island, Sunday at 1630 we will present trophies to the top 4 finishers in each class, winner of the Foster Team Race and winners of the various special awards. We encourage all sailors to attend. You never know if you've won one of our "Special Awards". Please come and enjoy the festivities. Also presented are the trophies for the Figawi High School Invitational Regatta to be sailed just off the entrance to the Boat Basin Sunday at 1130. So be there!

## 17. CONDUCT

The boat owner/skipper will be responsible for the conduct of their crew offshore and onshore. We have been guests of the people of Nantucket for over 45 years—we will not allow a serious breach of good conduct by any participant to endanger this relationship. The Figawi Committee and the Nantucket Boat Basin reserve the right to eject any boat, its skipper and crew, from the Boat Basin and to reject any future entry to Figawi in the event of a serious breach of good conduct. The Town of Nantucket allows no alcoholic beverages in public. If you leave the Figawi Tent or the Boat Basin property with an alcoholic beverage you will be subject to arrest.

## 18. RACE OFFICE

The Race Office on Nantucket is located at Veronica's Cottage on Swains Wharf.

# INSTRUCTIONS

# 47TH ANNUAL FIGAWI RACE WEEKEND

# FIGAWI RETURN RACE

## 1. RULES

The Figawi Race is governed by the Racing Rules of Sailing. In addition to these Sailing Instructions, the Return Race will be governed by Figawi Hyannis to Nantucket Sailing Instructions # 1, 2, 3, 10, 14.

## 2. START MONDAY, MAY 28, 2018

The start will be a competitive start. The start line will be between an orange flag on the Figawi Race Committee boat and an inflatable buoy in the vicinity of the Nantucket MO(A). There will be 5 divisions. Classes will be organized into divisions and starting order as follows:

<b>CLASSES M, N, O</b>	<b>DIVISION 5</b>	<b>YELLOW FLAG</b>
<b>CLASSES H, K, L</b>	<b>DIVISION 4</b>	<b>GRAY FLAG</b>
<b>CLASSES E, F, G</b>	<b>DIVISION 3</b>	<b>RED FLAG</b>
<b>CLASSES C, D</b>	<b>DIVISION 2</b>	<b>BLUE FLAG</b>
<b>CLASSES A, B, S</b>	<b>DIVISION 1</b>	<b>PINK FLAG</b>

The race will be started using Racing Rule 26. Class flags will be as listed above. Starting sequences will be linked together- the starting signal for one division will be the warning signal for the next division.

Division starts will be separated by 5 minutes.

<b>WARNING SIGNAL DIVISION 5</b>	<b>0930</b>	<b>YELLOW UP</b>
<b>START DIVISION 5</b>	<b>0935</b>	<b>YELLOW DOWN/GRAY UP</b>
<b>START DIVISION 4</b>	<b>0940</b>	<b>GRAY DOWN/RED UP</b>
<b>START DIVISION 3</b>	<b>0945</b>	<b>RED DOWN/BLUE UP</b>
<b>START DIVISION 2</b>	<b>0950</b>	<b>BLUE DOWN/PINK UP</b>
<b>START DIVISION 1</b>	<b>0955</b>	<b>PINK DOWN</b>

## 3. RELOCATION OF STARTING AREA

Should weather conditions dictate, flag 'L' will be flown from the Race Committee Boat. Follow Race Committee Boat to new start area.

## 4. COURSE

### ALL CLASSES:

**COURSE 1:** An Inflatable Mark may be used as the first mark. If it is used, its location and rounding will be announced by RC on VHF 71; #15 (North of Great Point) to Port; Bell #1 (Tuckernuck Shoal) to Starboard; Finish between staff displaying a blue flag on Race Committee Boat and ODAS #17

**COURSE 2:** An Inflatable Mark may be used as the first mark. If it is used, its location and rounding will be announced by RC on VHF 71; Bell #1 (Tuckernuck Shoal) to Starboard; #15 (North of Great Point) to Port; Finish between staff displaying a blue flag on Race Committee Boat and ODAS #17

## 5. PROTESTS

Protests must be filed in accordance with RRS 61. Protest forms are available from the Steward at Hyannis Yacht Club and must be filed at the Steward's Office within 45 minutes of the time the Committee Boat docks.

## 6. RADIO

The Figawi Race Committee will monitor VHF 71.

## 7. TIME LIMIT

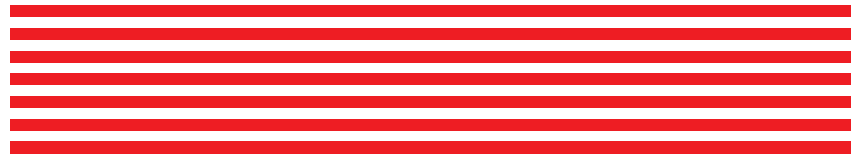
The time limit is 4 hours. If no boats in a division sail the course and finish within 4 hours-all boats in that time division will be scored DNF. If the first boat to finish in a division sails the course and finishes within 4 hours-any boat in her division that fails to sail the course and finish within 1 hour of the first finish will be scored DNF. Boats retiring from the race shall notify the Race Committee on VHF 71 or call 508-221-6891.

## 8. SCORING/PRIZES

Each Division will be scored separately. Awards will be mailed directly to winners.

# INSTRUCTIONS

# THANKS



THANK YOU TO THE FOLLOWING GENEROUS SPONSORS THAT MAKE THIS YEAR'S RACE WEEKEND POSSIBLE:

## ADMIRAL

SAVANT DENALI

## CAPTAIN



## COMMANDER



Own your tomorrow



## LIEUTENANT



CAPE CLASP



ETHAN ALLEN



TEAMCHOICE

## ENSIGN



STIFEL NICOLAUS



The Fallon Family



BRANT POINT MARINE



## HIGH SCHOOL INVITATIONAL

## MEDIA SPONSORS



CAPE COD TIMES

CAPE COD LIFE PUBLICATIONS  
— Since 1979 —

OCEAN NAVIGATOR

