



2010 ROLEX BIG BOAT SERIES & WEST COAST IRC CHAMPIONSHIP

St. Francis Yacht Club

September 16-19, 2010

AMENDMENT #1

Sailing Instruction 10 is amended as follows:

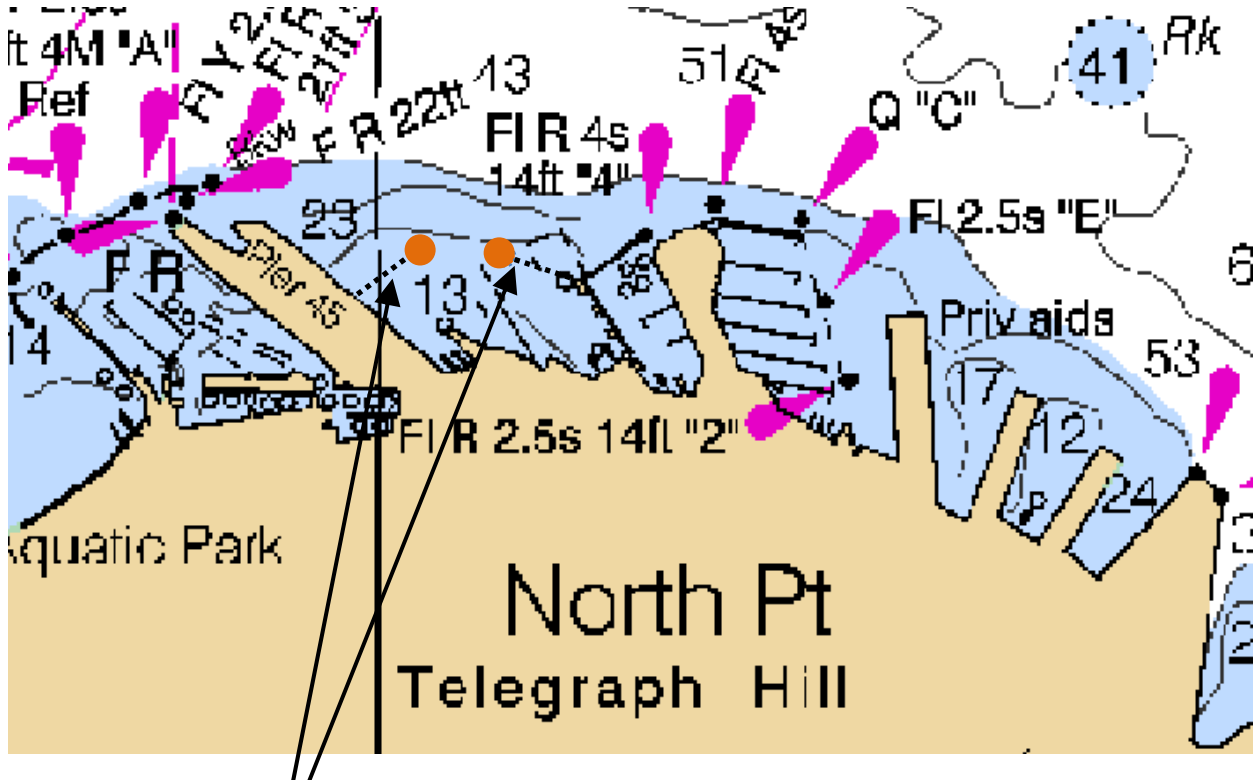
10. AREAS THAT ARE OBSTRUCTIONS

10.1 Boats shall not pass between the following objects and the closest point ashore:

- (a) The "H" Beam (located approximately 200 yards west of StFYC).
- (b) Anita Rock and its Buoy "AR".
- (c) The South Tower of the Golden Gate Bridge.
- (d) The Bell Buoy off the west end of Alcatraz Island.
- (e) The buoy south of Point Blunt on Angel Island.
- (f) All breakwaters in the vicinity of Fisherman's Wharf and Aquatic Park.
- (g) Round orange buoy set off of Piers 39 and 45 (if set).
- (h) Round orange buoy set north of the StFYC Harbor entrance (if set).

10.2 The line between the above-mentioned restrictions are defined as continuous obstructions.

10.3 A boat that breaks this rule may not correct her error per RRS 28.1 and shall retire. This changes RRS 28.1.



Continuous obstructions as per SI 10.2

Posted September 15, 2010 - 2000 hours

John Craig
Race Manager