



driveHG.ca

**2024 Port Credit Yacht Club (PCYC) Event  
Presented by driveHG**

**Saturday, July 6<sup>th</sup> and Sunday, July 7<sup>th</sup>  
Port Credit Yacht Club  
115 Lakefront Promenade  
Mississauga, Ontario L5E 3G6**

**Supplemental Sailing Instructions (SSIs)**

(Numbering corresponds to the RRS Appendix S)

*The notation '[NP]' in a rule means that a boat may not protest another boat for breaking that rule. This changes RRS 60.1(a).*

*The notation '[DP]' in a rule in the NoR means that the penalty for a breach of that rule may, at the discretion of the protest committee, be less than disqualification.*

**4 SIGNALS MADE ASHORE**

- 4.1 Signals made ashore will be displayed at the flag pole located south of the Clubhouse.
- 4.2 When flag AP is displayed ashore, '1 minute' is replaced with 'not less than 60 minutes' in Race Signals AP.

**5 SCHEDULE OF RACES**

- 5.1 The scheduled warning signal for the first race each day is 1050.
- 5.2 No warning signal will be held after 1530 each day.
- 5.3 A maximum of 4 races will be held on Saturday and a maximum of 3 races will be held on Sunday.
- 5.4 One extra race per day may be sailed, provided that no class becomes more than one race ahead of schedule and the change is made according to SI 2.1.
- 5.5 For the 8 Metre Fleet, a maximum of 3 races are scheduled for Saturday and a maximum of 2 races are scheduled on Sunday.

**6 CLASS FLAGS**

- 6.1 Each class flag will be the class insignia on a plain background except for:

- PHRF I – PHRF on a yellow background
- PHRF II – PHRF on a purple background
- White Sail I – PHRF on a plain background

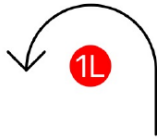
**7 COURSE**

- 7.1 The racing area is identified in Attachment 1.
- 7.1 Course assignments are as follows:

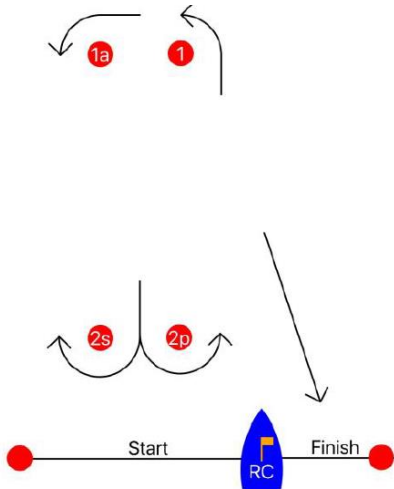
Alpha Course	Bravo Course
Signal Boat: Heron II	Signal Boat: Grand National
8Mr	Etchells
PHRF I	J80
PHRF II	J105
White Sail I	

- 7.2 [NP] The race area will be at the discretion of Race Officer.
- 7.3 Only the courses shown below are to be sailed.

**8mR – Mark Rounding Order:** Start-1L-2s/2p-1L-Finish



**All Other Classes – Mark Rounding Order:** Stat-1-1a-2s/2p-1-1a-2s/2p-Finish



- 7.4 In the event of the next leg change of the course, Mark 1L and Mark 1 will be relocated. Mark 1a will not be relocated.
- 7.5 No later than the warning signal, the race committee signal vessel will display the approximate compass bearing of the first leg.

**8 MARKS**

- 8.1 Inflatable marks will be used.

8.2 The colour of marks will be:

	<b>Alpha Course</b>	<b>Bravo Course</b>
Start	Green	Green
8mR	Yellow	n/a
Course Marks	Orange	Yellow
Finish	Red	Red
Change of Course – 8mR	Orange	n/a
Change of Course All Other Fleets	Yellow	Orange

## **9 THE START**

- 9.1 The starting line will be between a staff displaying an orange flag on the signal vessel and the course side of a green starting mark.
- 9.2 Two or more classes may be started together by displaying their class flags at the warning. If the order is changing for the first race of each day, the Race Committee will announce this at least five minutes before the first warning. Failure to do so, failure to hear such an announcement, or the timing will not be grounds for a request for redress.
- 9.3 Boats whose warning signal has not been made shall avoid the starting area during the starting sequence for other races.
- 9.4 A boat that does not start within 4 minutes after her starting signal will be scored Did Not Start without a hearing. This changes RRS A5.1 and A5.2.
- 9.5 If any part of a boat's hull is on the course side of the starting line at her starting signal and she is identified, the race committee will attempt to hail her sail number. Failure to hail her number, failure of her to hear such a hail, or the order in which boats are hailed will not be grounds for a redress for request. This changes RRS 62.1(a).

## **10 CHANGE OF THE NEXT LEG OF THE COURSE**

- 10.1 To change the next leg of the course, the race committee will lay a new mark (or move the finishing line) and remove the original mark as soon as practicable. When in a subsequent change a new mark is replaced, it will be replaced by an original mark.
- 10.2 The race committee may, without signal, move a mark to change the direction up to 10 degrees or the length up to 10 percent of the previous length, provided that no boat is sailing to the mark.

## **11 THE FINISH**

- 11.1 The finishing line will be between a staff displaying a blue flag on the signal vessel and the course side of the red finishing mark.

## **12 TIME LIMITS [AND TARGET TIMES]**

- 12.1 The Mark 1 Time Limit, Race Time Limit (see RRS 35), and the Finishing Window are shown in the table below.

### **8mR**

Starting Window	Mark 1 Time Limit	Race Time Limit	Finishing Window	Target Time
4 minutes	35 minutes	90 minutes	15 minutes	70 minutes

### All Other Classes

Starting Window	Mark 1 Time Limit	Race Time Limit	Finishing Window	Target Time
4 minutes	25 minutes	90 minutes	15 minutes	60 minutes

- 12.2 If no boat has passed the first mark within the Mark 1 Time Limit, the race will be abandoned.
- 12.3 The Finishing Window is the time for boats to finish after the first boat sails the course and finished. Boats failing to finish within the Finishing Window, and not subsequently retiring, penalized or given redress, will be scored Time Limit Expired (TLE) without a hearing. A boat scored TLE shall be scored points for the finishing place one more than the points scored by the last boat that finished within the Finishing Window. This changes RRS 35, A5.1, A5.2 and A10.
- 12.4 Failure to meet the Target Times will not be grounds for redress. This changes RRS 62.1(a).

### 13 PROTESTS AND REQUESTS FOR REDRESS

- 13.1 The protest time limit is 60 minutes after the last boat in that class finishes the last race of the day or the race committee signals no more racing today, whichever is later. The time will be posted on the online official notice board.
- 13.2 Hearing request forms are available online at <https://yachtscoring.com>.
- 13.3 Notices will be posted no later than 30 minutes after the protest time limit to inform competitors of hearings in which they are parties or named as witnesses. Hearings will be held at the Learn To Sail Centre, located west of the main clubhouse as soon as is feasible.
- 13.4 RRS 62.2(a) and 66.2(a) do not apply.

### 14 [DP][NP] SAFETY REGULATIONS

- 14.1 A boat that retires from a race shall notify the race committee at the first reasonable opportunity.

### 17 COMMUNICATIONS WITH COMPETITORS

- 17.1 Alpha course will monitor VHF Channel 72 and Bravo Course will monitor VHF Channel 73.
- 17.2 On the water, the race committee may make courtesy broadcasts to competitors on VHF radio. Failure to hail will not be grounds for a redress for request. This changes RRS 62.1(a).

# ATTACHMENT 1 – COURSES LOCATION

