



# VX One East Coast Championship

July 13-15, 2023

Newport, RI

Organizing Authority: Sail Newport

## Sailing Instructions

### 1. RULES

- 1.1. The 2023 VX One East Coast Champs will be governed by the rules as defined in *The Racing Rules of Sailing*.
- 1.2. US Safety Equipment Requirements (USSER):
  - a) All boats shall minimally comply with the US Nearshore section of the USSER and shall comply with their class rules, where applicable.
  - b) USSER 2.4.2, 2.4.3, and USSER 2.4.4.1 through 2.4.9 regarding Hull and Structure: Lifelines shall apply, except that boats not normally rigged with lifelines are exempt from these requirements. Rule 40.1 shall apply to exempt boats and crew shall wear approved PFDs while racing.
  - c) In the event of a conflict between these requirements and applicable class rules, the class rules shall apply.

### 2. NOTICES TO COMPETITORS, ANNOUNCEMENTS, VHF CHANNEL

- 2.1. Notices to competitors will be posted on the Official Notice Board located on the South Deck of the Sail Newport Building.
- 2.2. Any change to the sailing instructions will be posted before 0900 on the day it will take effect, except that in the case of a postponement ashore, a change to the sailing instructions may be posted no later than 15 minutes before the lowering of AP.
- 2.3. Any change to the schedule of races will be posted by 1800 on the day before it will take effect. The OA will endeavor to notify all boats by text of any schedule change.
- 2.4. The race committee will announce the rendezvous locations at 1000 by VHF. In the case of a postponement ashore, the RC will announce the rendezvous locations 15 minutes prior to the lowering of AP. The failure of the race committee to make this announcement or of a boat to hear this announcement will not be grounds for a request for redress. This changes RRS 62.1(a).
- 2.5. VHF Channel: the race committee will use VHF channel 73.

### 3. SIGNALS MADE ASHORE

- 3.1. Signals made ashore will be displayed from the flagpole on the east side of the Sail Newport building at 72 Fort Adams Drive.

- 3.2. When code flag "AP" is displayed ashore, "1 minute" is replaced with "not less than 60 minutes."
- 3.3. Signals designating the rendezvous locations will be displayed at 1000 each day from the flagpole by displaying the code flag for the rendezvous location.

#### **4. RACE AREAS**

- 4.1. Race Areas are described below and shown in Addendum A – Race Areas.
  - a) Area "A" - Between Rose Island and Goat Island
  - b) Area "B" - Near Potter Cove and Gould Island

#### **5. SCHEDULE**

##### Thursday, July 13

- 0800-0930 - Mandatory check in (continued from Wednesday)
- 1200 - First warning signal

##### Friday, July 14

- 1200 - First warning signal
- After Racing – Social at Sail Newport

##### Saturday, July 15

- 1100 - First warning signal
- 1500 - No Warning signal after this time
- After Racing – Awards at Sail Newport

#### **6. CLASS FLAG**

The Class flag will be the VX One class insignia.

#### **7. CHECK IN AND RETIREMENT (DP)**

- 7.1. Prior to the first warning signal each day, each boat shall check in with the race committee by passing by the stern of the signal vessel and announcing their sail number.
- 7.2. Boats retiring shall inform the race committee on VHF channel 73 or if that is not possible, by calling (401) 846-1983.

#### **8. COURSES AND MARKS**

- 8.1. Courses and marks are described and shown in Addendum B – Courses and Marks.
- 8.2. If one mark of the leeward gate is missing or adrift, boats shall leave the remaining mark to port.

#### **9. THE START**

- 9.1. The starting line will be between a staff displaying an orange flag on the race committee signal vessel and the course side of a yellow MarkSetBot on the port end of the line.
- 9.2. The race committee will attempt to hail boats observed to be OCS at the start by

VHF. Failure to hail or the timing or order of any such hails will not be grounds for redress. This changes RRS 62.1(a).

## **10. CHANGE OF COURSE**

- 10.1. To change the next leg of the course, the race committee will move the original mark, lay a new mark, or move the finishing line.
- 10.2. The race committee may adjust marks by up to ten degrees in bearing and/or 0.1 nm in length without signaling the change. This changes RRS 33.
- 10.3. The race committee will attempt to announce any course change by VHF. Failure to make such an announcement shall not be grounds for a boat to request redress. This changes RRS 62.1(a).

## **11. THE FINISH**

- 11.1. The finishing line will be between a staff displaying a blue flag on the race committee vessel and the course side of the finishing mark.
- 11.2. For Course 'W' with odd numbered legs, the finishing line will be located to windward of the windward marks.
- 11.3. For Course 'W' with even numbered legs, the finishing line will be located to leeward of the leeward gate.

## **12. PENALTY SYSTEM**

- 12.1. 11.3 RRS 44.1 is changed so that the Two-Turns Penalty is replaced by the One-Turn Penalty.

## **13. TIME LIMIT AND FINISHING WINDOW**

- 13.1. The time limit for the first boat to sail the course and finish is one hour.
- 13.2. The finishing window is the time for boats to finish after the first boat sails the course and finishes. Boats failing to finish within the 20-minute finishing window, and not subsequently retiring, penalized or given redress, will be scored Time Limit Expired (TLE).

## **14. PROTESTS AND REQUESTS FOR REDRESS**

- 14.1. Protests shall be submitted to the Jury Secretary located on the top floor of Sail Newport within the protest time limit.
- 14.2. The protest time limit is one hour after the race committee signal boat docks.
- 14.3. Hearing times will be posted on the Official Notice Board as soon as possible.

## **15. SCORING**

- 15.1. The Appendix A Low Point Scoring System shall apply.
- 15.2. One race shall constitute a series.
- 15.3. When fewer than 6 races have been completed, a boat's series score is the total of her race scores. When 6 or more races have been completed, a boat's series score is the total of her scores excluding her worst score.
- 15.4. A boat scored Time Limit Expired (TLE) shall be scored points for the finishing place

one more than the points scored by the last boat to finish within the finishing window. This changes RRS 35, A5.1, A5.2 and A10.

## 16. PRIZES

16.1. Trophies will be awarded to the top 3 finishers in each class.

## 17. WAIVER AND RELEASE OF LIABILITY

17.1. Sailing is an activity that carries with it an inherent risk of damage and injury.

Competitors participate in this regatta entirely at their own risk and are reminded to pay special attention to rule 3, Decision to Race. The race organizers, including the OA, Race Committee, Protest Committee, the State of Rhode Island, sponsors, volunteers, or any other affiliated organization or official, will not be responsible for damage to any boat or other property or the injury to any competitor, including death, sustained as a result of practice for or participation in this event on the water or ashore. By participating in this event, each competitor agrees to release the race organizers from any and all liability associated with such competitor's participation in this event to the fullest extent permitted by law.

17.2. As a condition of entry, all skippers and crew must complete the Waiver of Liability Form which is located at <https://www.yachtscoring.com/emenu.cfm?eID=14968>

## 18. FURTHER INFORMATION:

Gary Knapp- Regatta Director 516-641-6217 [Gary.Knapp@sailnewport.org](mailto:Gary.Knapp@sailnewport.org)



Clean Ocean,  
Green Earth



LEED-COMPLIANT  
HEADQUARTERS



SOLAR POWER



RAIN WATER  
HARVESTING



RECYCLE



GREEN TEAM



STRAW FREE  
CAMPUS



NO SINGLE-USE  
PLASTIC BOTTLES



RECYCLABLE /  
COMPOSTIBLE  
FOODWARE



LOCALLY  
SOURCED FOOD



OCEAN  
CONSERVATION  
EDUCATION



PAPERLESS REGATTA  
MANAGEMENT



ELECTRIC  
GPS-CONTROLLED MARKS



PROVISION  
WITHOUT PLASTIC

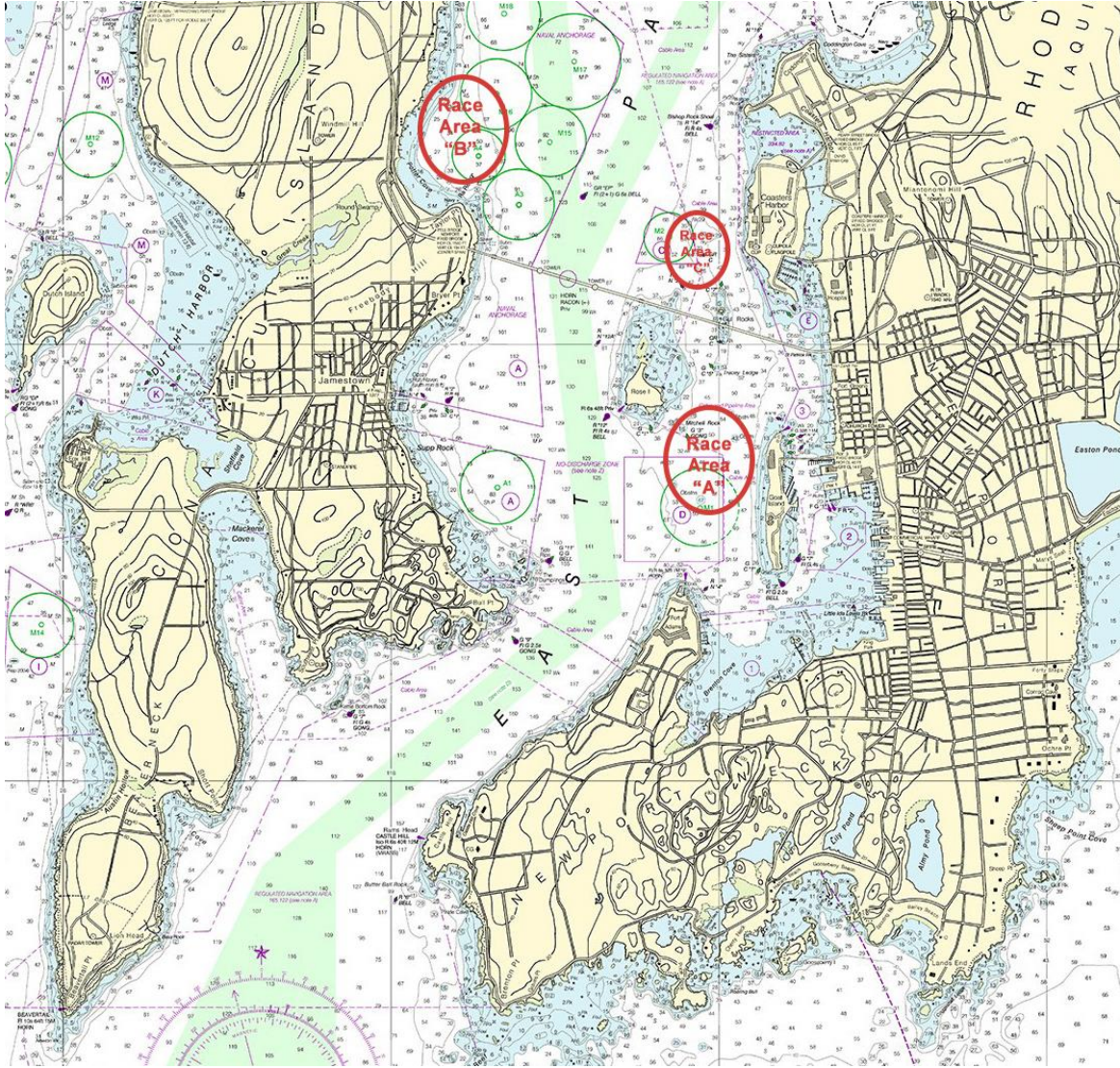


REUSEABLE  
ICE PACKS



COMPOST  
FOOD SCRAPS

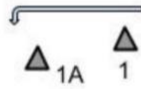
# Addendum A – Race Areas



## Addendum B – Courses and Marks

### Course Diagrams:

**Course W- Even # of Legs**



**Course W- Odd # of Legs**



### Courses:

W2	Start – 1 – 1A – Finish
W3	Start – 1 – 1A – 2p/2s – Finish
W4	Start – 1 – 1A – 2p/2s – 1 – 1A – Finish
W5	Start – 1 – 1A – 2p/2s – 1 – 1A – 2p/2s – Finish

### Marks of the Course:

The diagrams above show the courses, including the approximate angles between legs, the order in which marks are to be passed and the side on which each mark is to be left. Marks are:

VX One	Original 1, 1A, 2s and 2p	Start/Finish	Change Marks
MarkSetBots	Orange	Yellow	Orange