



PURSUIT COURSE SAILING INSTRUCTIONS

Commodore's Cup Regatta

May 20, 2023

Organized by

Tampa Sailing Squadron, Apollo Beach, Florida

The notation '[DP]' in the *rule* means that the penalty for a breach of the *rule* may, at the discretion of the protest committee, be less than disqualification.

1 RULES

- 1.1 The regatta will be governed by the *rules* as defined in *The Racing Rules of Sailing* (RRS), including the Mother Lode Class.
- 1.2 Changes to the Sailing Instructions may be made on the Water. The race committee signal vessel will signal 'Come within Hail' by displaying Signal Flag L with one sound. Each boat will receive and acknowledge the change via VHF channel 68.
- 1.2 If there is a conflict between the Sailing Instructions and the Notice of Race, the Sailing Instructions take precedence. This changes RRS 63.7.

2 CHANGES TO SAILING INSTRUCTIONS

Changes to the Sailing Instructions will be posted immediately following the competitor's meeting on May 19, or before 0900 on May 20, 2023, and may also be made on the water.

3 COMMUNICATION WITH COMPETITORS

- 3.1 Notices to competitors will be posted on the Official Notice Board located by the flagpole at TSS.
- 3.2 The race committee will use VHF channel 68 to communicate with competitors.

4 SIGNALS MADE ASHORE

- 4.1 Signals made ashore will be displayed from the flagpole located at TSS.
- 4.2 When flag AP is displayed ashore, '1 minute' is replaced by 'not less than 45 minutes' in race signal AP. This changes Race Signal AP.

5 SCHEDULE OF RACES

One race will be sailed on the Pursuit Course.

11:55 Warning signal

12:00 First scheduled start.

6 CLASS FLAGS

The #1 numeral pennant will be used a class flag for the first scheduled start.

7 THE COURSES and MARKS

- 7.1 The following diagram shows the course and a description of the marks..
- 7.2 Pursuit times will be available at the competitors meeting.

8 THE START

- 8.1 The starting line will be between a staff displaying an orange flag on the race committee signal vessel at the starboard end, and the course side of TSS Mark X at the port end.
- 8.2 Boats not yet in their starting sequence shall keep clear of the starting area.
- 8.3 As a courtesy, the race committee will attempt to notify boats of their upcoming start over VHF radio; failure of the race committee to announce a start time shall not be grounds for redress.
- 8.4 When an individual recall is signaled, in addition to displaying the X flag, (X-Ray, individual recall), and the sounding of one horn, the race committee will attempt to hail boats that are OCS.

9 THE FINISH

The finishing line will be between a staff displaying a blue flag on the race committee vessel, and the course side of TSS Mark X.

10 THE PENALTY SYSTEM

RRS Appendix V1 Alternative Penalties will apply.

11 TIME LIMITS

11.1 The time limit for all boats to sail the course and finish is 1630.

11.2 Boats still racing after 1630 will be scored DNF. This changes RRS 35.

12 HEARING REQUESTS

12.1 Boats intending to protest must notify the race committee finish vessel of their sail number and the sail number of the boat they are protesting. This may be done during the race at the time of any incident.

12.2 The protest time limit is 30 minutes after the race committee signal vessel docks and will be posted on the Official Notice Board.

12.3 Notices will be posted not later than 15 minutes after the protest time limit to inform competitors of hearings in which they are parties or named as witnesses.

12.3 Hearing request forms are available at the protest desk in the TSS clubhouse.

12.4 Protest will be heard in the approximate order of receipt in the TSS clubhouse.

13 SCORING

13.1 WFPHRF ratings and assigned Mother Lode ratings will be used to calculate individual pursuit start times using Time on Distance calculations.

13.2 Unless the course is shortened, each boat's score will be the order in which she finishes.

13.3 If it becomes necessary to shorten the course, the 'S' flag will be displayed by a mark boat at the mark of the course which will be the new finish line.

13.4 If the course is shortened, corrected finish times and order will be calculated using the shorter course length.

14 SAFETY REGULATIONS

14.1 [DP] Prior to the warning signal, each boat shall check in via radio (VHF Channel 68).

14.2 [DP] A boat that retires from a race shall notify the race committee at the first reasonable opportunity.

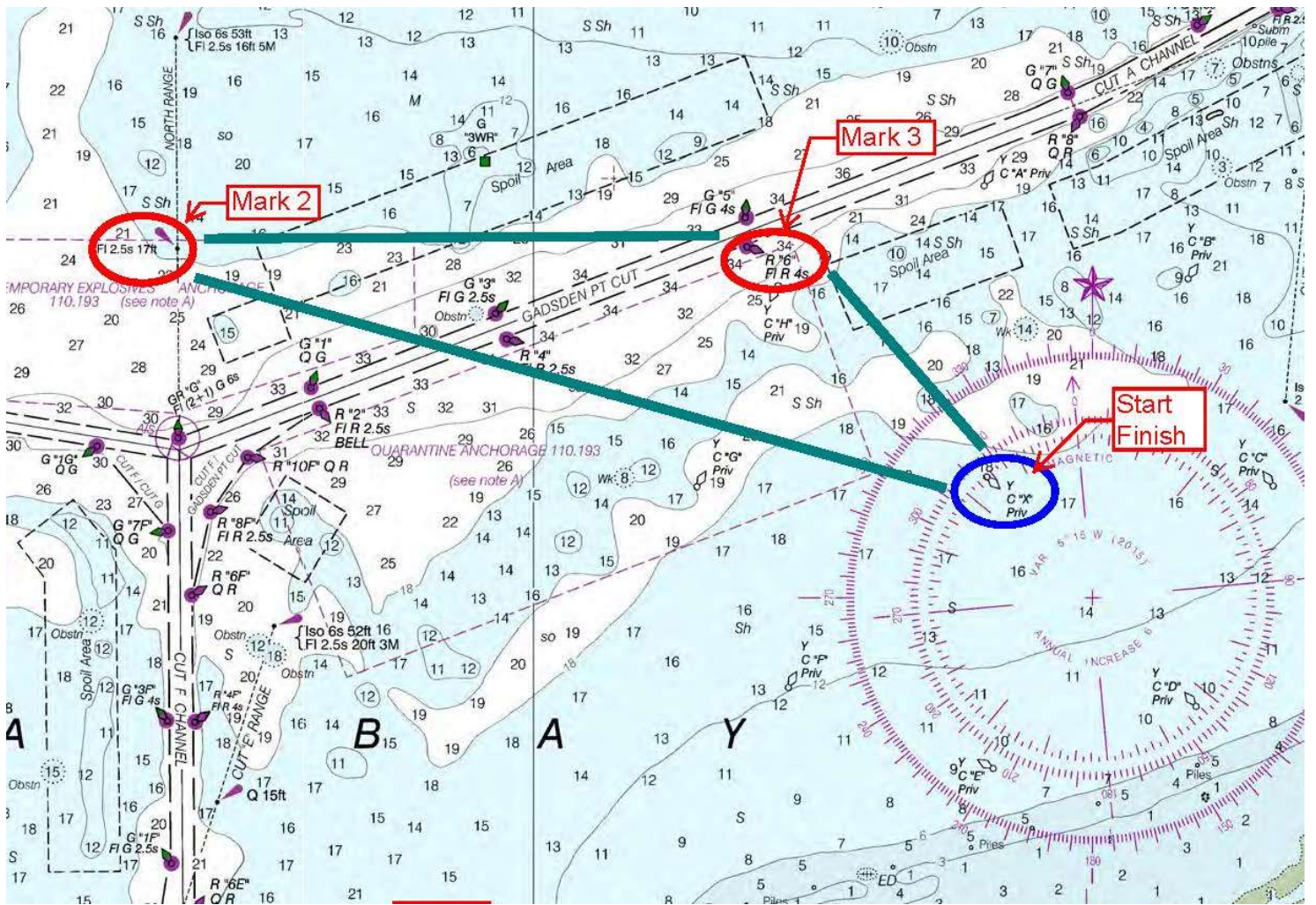
14.3 [DP] The COLREGS always apply between boats racing and vessels not racing. A boat shall not obstruct a commercial vessel.

15 PRIZES

Final results will be posted after any protest hearings.

Prizes will be presented after Dinner.

-- End of Sailing Instructions --



W Wind

Leg1

Leg2

Leg3

Leg4

Course	Mk 1	Mk1 to Mk 2	Dist	T Hdg	Mk2 to Mk 3	Dist	T Hdg	Mk3 to Mk 4	Dist	T Hdg	Mk 4 to Finis	Dist	T Hdg	Total
A	1X	1X 14srt	2.92	286°	14SRT 12RCB	1.98	306°	12RCB 1X	1.16	132°	1X 1X	0	0	6.06

Headings are in Degrees° True, Distances are Nautical Miles, Marks to Starboard

Mark#	Mark ID	Latitude	Longitude	Mark Name	Description	Abbreviations
Start	1X	N 27 46.932	W 082 28.220	TSS Club Mark X	Yellow Cilinder X	HAF High Above Foundation
Mk2	14srt	N 27 47.733	W 082 31.391	Cut F Inbound Range, Front	HAF 12 ft	TRT Tall Range Tower
Mk3	12RCB	N 27 47.732	W 082 29.159	Gadson Pass Red #6	Red Can #6	SRT Short Range Tower
Finnish	1X	N 27 46.932	W 082 28.220	TSS Club Mark X	Yellow Cilinder X	RCB Red Can Bouy