



Skipper's Meeting

Off the Dock Races of the DYC.

Off the Dock Skippers Meeting

Date: May 4, 2023

Time: 700 pm (19:00 hrs)

Where: DYC Silver Cup Room

Topics:

1. Ratings: There are a number of ways to get a rating for your boat. They will be explained and will be shown live.
2. Courses: There are courses for each class and we will discuss them and show them.
3. Requirements: We will go over the necessary items that need to be on board; Yacht Scoring; Race Participation; Communications: Sl's.
4. Sailing Rules: We will go over the sailing rules for "When Boats Meet"
5. DYC specific items: Race area, Race Committee.

RATINGS:

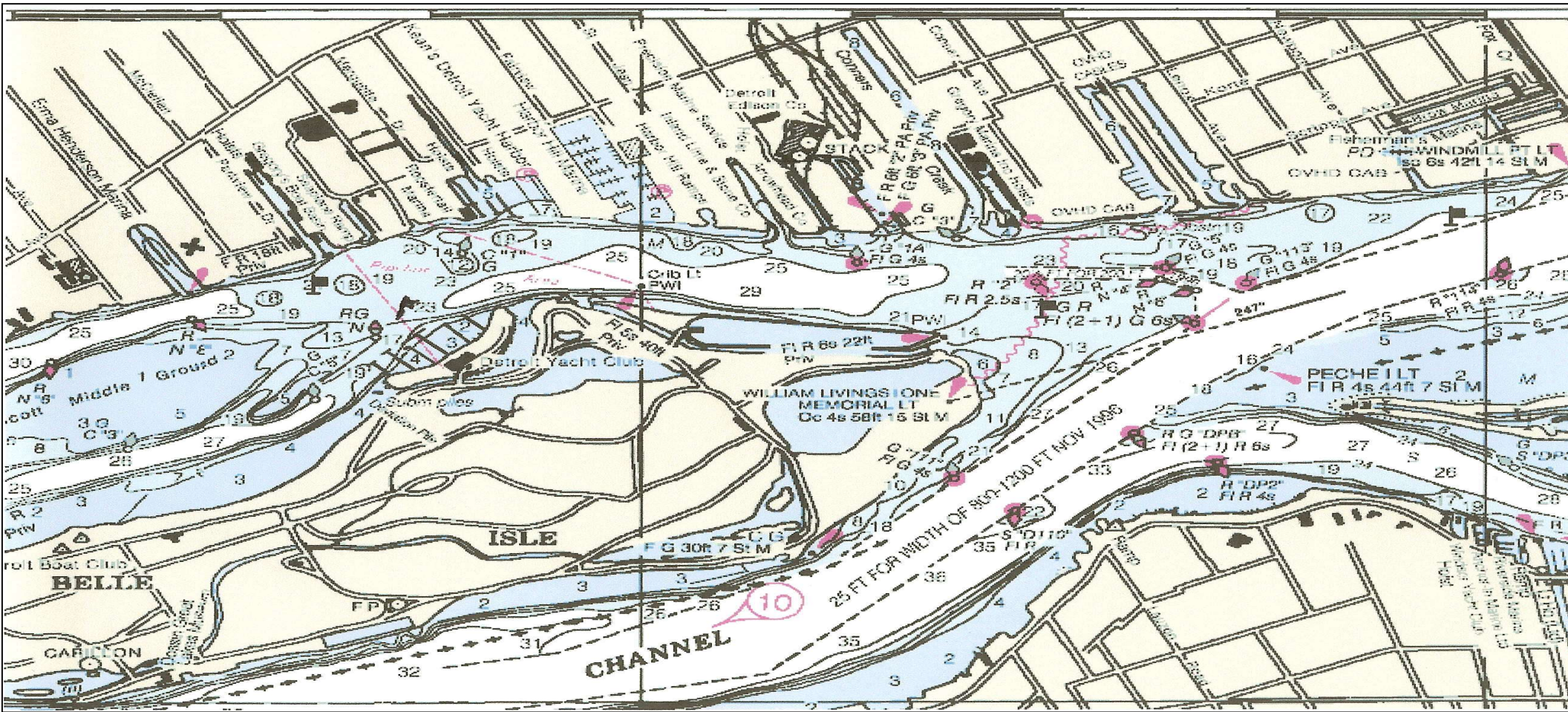
There are basically three ways to get a rating:

1. LMPHRF: www.LMPHRF.org. See the website
2. If you do the Bayview or Chicago Mackinac Race: ORC which you can access via US Sailing. A great deal pricier.
3. We have a way to calculate your rating ourselves. See spread sheet next. We also use a PHRF guide published by US Sailing that shows PHRF ratings for your boat nationally.
4. Finally if you do not know the measurements they are likely available on SailboatData.com

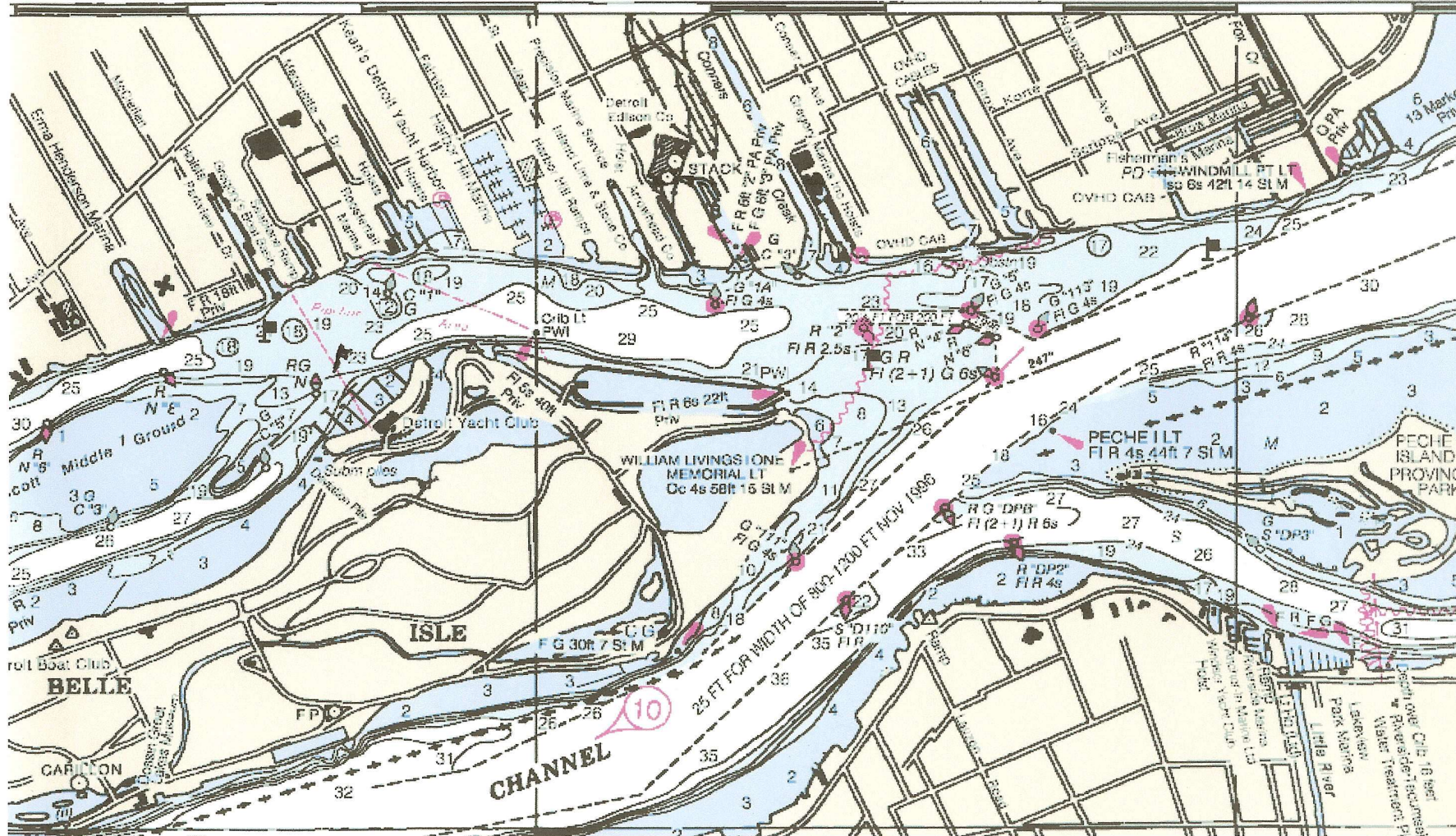
The Courses

- The Off The DOC races offer several courses. These depend on size and weather.
- The PRO will make a decision based on the wind which course is chosen.
- So familiarize your self with these. And make sure you understand the difference between LONG and SHORT.
- I will show you the courses next, they are also on YS in the SI's

Lakewood Long

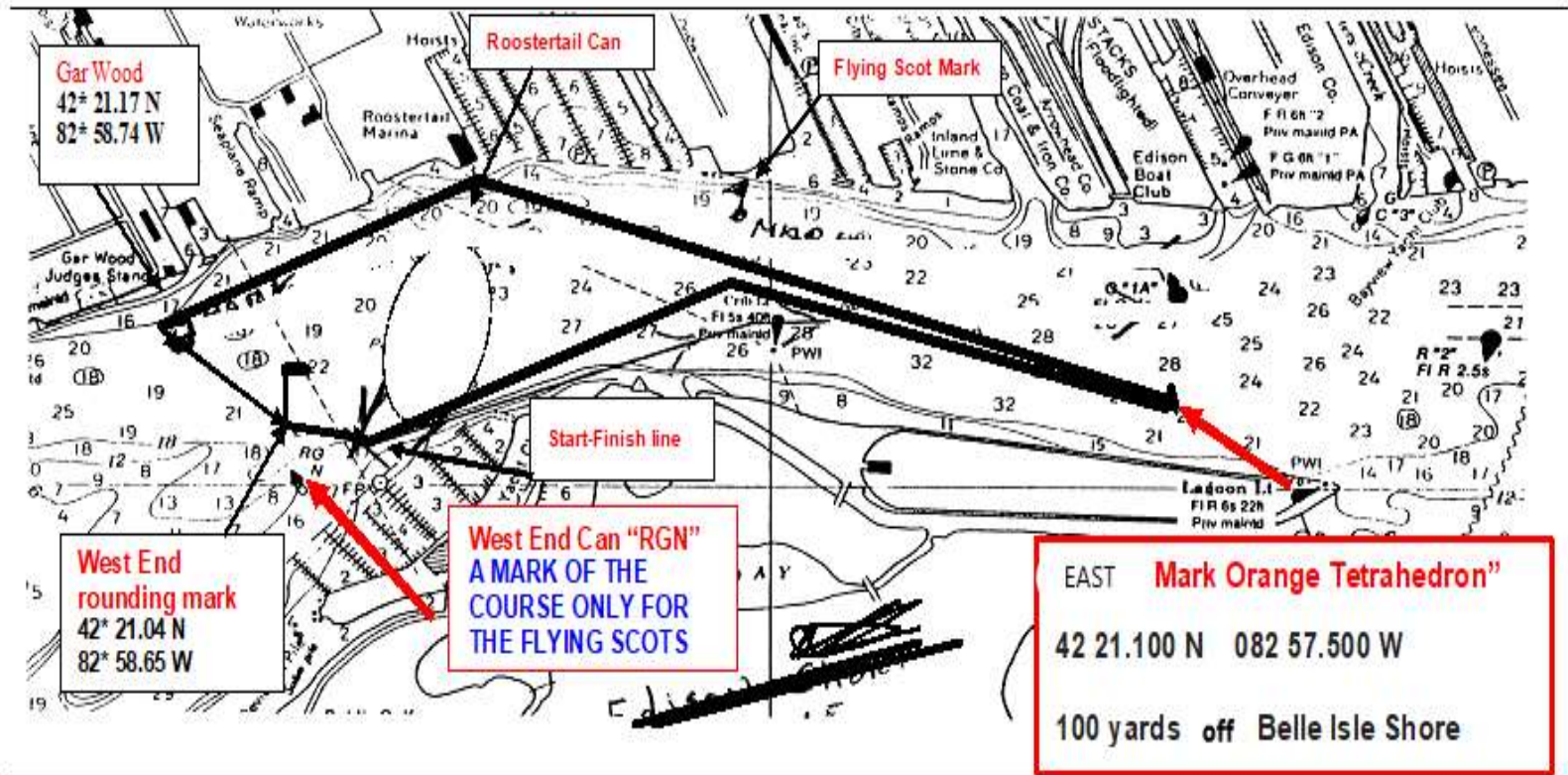


Bayview Long

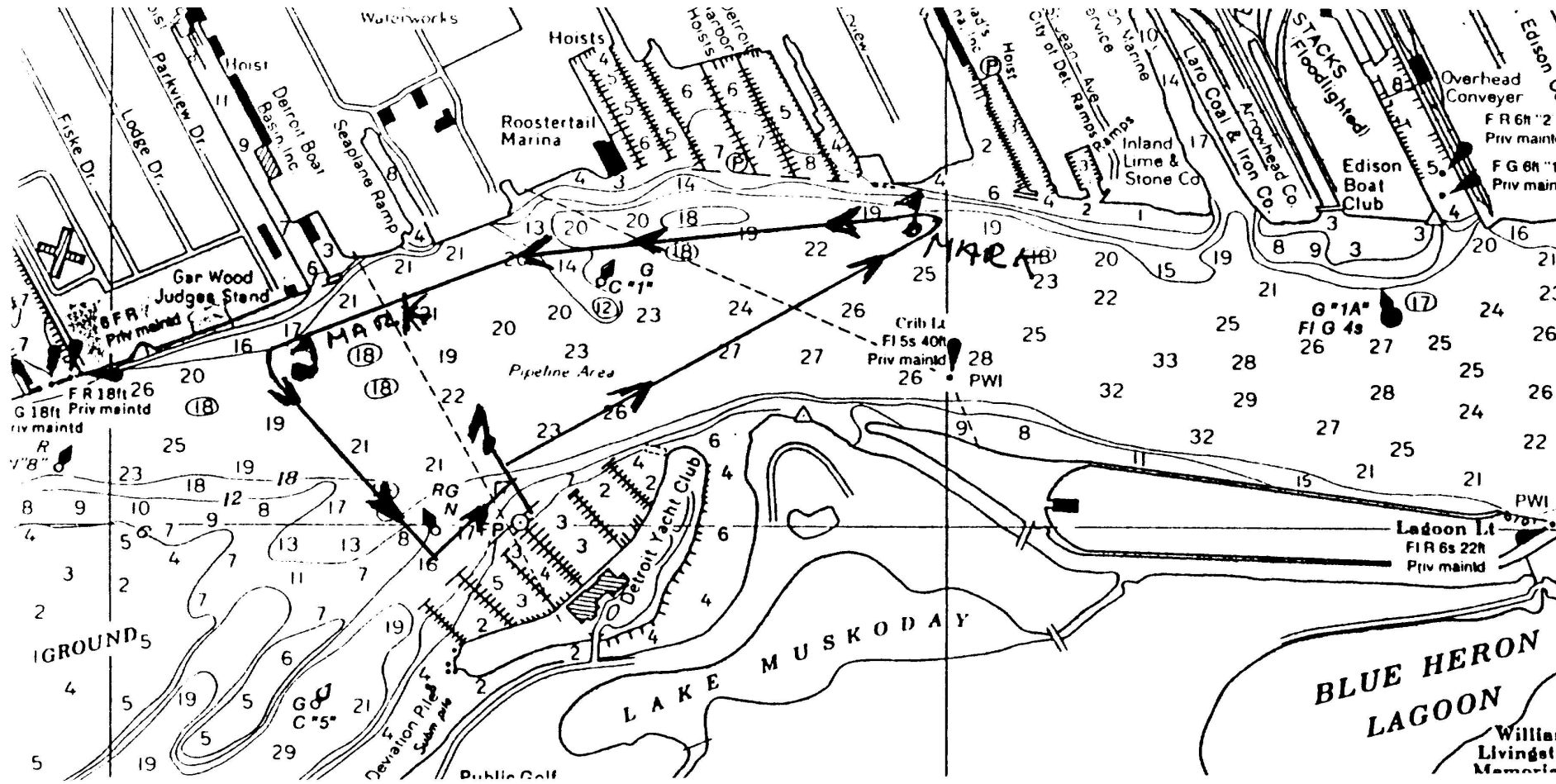


East Course Long:

– From the **Starting Line** (passing the RC Flag on Main Dock to starboard and the Starting Line tetrahedron to port) , to orange tetrahedron off Belle Isle. Round that mark leaving it on your port side and proceed to the **Buoy CG "1"** near the **Roostertail**, passing (rounding) that buoy to port. Continue downstream to a **mark (tetrahedron)** positioned approximately 100 yards from shore and downstream of the **'Gar Wood Judges Stand'** passing (rounding) that mark leaving it on your port side. Next is the **West End rounding mark** ($42^{\circ} 21.04 / 82^{\circ} 58.65$), which is a tetrahedron or flag to be left to port; it will be near the **West End Buoy CG "RGN"** which is **not a mark of the course, EXCEPT FOR THE Scots**. Then proceed upstream crossing the **Finish Line**, which will be the same as was the Starting Line passing the Starting Line RC Flag to starboard and the Starting Line Mark to port.



Flying Scots or Class 4



Requirements

- 1. Sign up with Yacht Scoring
- 2. Download the Sailing Instructions and read them
- 3. Have a copy on board, understand the courses and your class
- 4. Have a VHF radio nearby, preferably in the cockpit
- 5. Have a horn, monitor channel 68, a red flag, safety equipment
- 6. Know the basic rules: “when boats meet”.
- 7. Be a Gentleman/Lady
- 8. Have FUN!!

Racing Rules of Sailing



Racing Rules of Sailing

- Part 2 When Boats Meet
- Section A Right of Way
- 10. On Opposite Tacks
- 11. On the same tack overlapped
- 12. On the same tack not overlapped
- 13. While tacking
- 14. AVOID CONTACT (overrides everything)
- 15. Acquiring Right of Way

Racing Rules of Sailing

- 16. Changing course
 - 16.1 keep clear even if you have right of way
 - 16.2 port tack boat cannot be hunted
 - 17 On the same tack, proper course.
 - 18 MARK-ROOM
-
- I suggest you read these, and there a multiple scenarios on you tube racing rules of sailing.

DYC Specific items

- 1. Start Area or often called the box. Do not interfere with boats during the starting sequence. (5 min)
- 2. If the PRO or RC does not have your sail number or for a FS, sail close to them and mention your name. Or use your VHF
- 3. If you abandon a race, call Channel 68 and let the RC know you are not going to finish.
- The OTD is intended to be FUN and enjoyable! Come meet us at the bar after the race.