



DETROIT YACHT CLUB

2023 “OFF-THE-DOCK” RACE SERIES

SAILING INSTRUCTIONS

- 1. SCHEDULE OF RACES** - The Detroit Yacht Club (“DYC”) Sailing Committee will conduct sail boat races starting off the DYC Main Dock scheduled for the following evenings. The races are all on Thursdays: May 25, June 1, June 15, June 29, July 13, July 27, August 10, August 17, August 24, Sept 7. (Note in the event there are more than 2 cancellations or more, Aug 31 will be a make-up date).
- 2. RULES & AUTHORITY** - The races will be governed by The Racing Rules of Sailing (RRS), the prescriptions of USSA, the rules of each class, and these Sailing Instructions.

The DYC Sailing Committee shall have the authority to establish the race course, to assign each boat a rating for the races and to the assign boats to an appropriate class (see Sailing Instruction 7) and to amend the Sailing Instructions. Any amendment to the Sailing Instructions shall be posted on Yacht Scoring and posted on one of the glass-enclosed bulletin boards on the west wall of the DYC first-floor lobby, near the exit door toward Main Dock, by 1730 hours on the day of the first race for which the amendment will be in effect. A courtesy copy may be emailed to the DYC Sailing Committee distribution list, if practical. Rule books can be obtained at USSAILING.org.

- 3. ELIGIBILITY & REGISTRATION** - The races are open to (a) any DYC-owned Flying Scot, skippered by a member in good standing of the DYC who has the required rating assigned by the DYC Flying Scot Committee, (b) any monohull sailing boat that (i) has an overall length (LOA) of 15 feet or more, (ii) is owned and skippered by a member in good standing of the DYC, (iii) has registered for the races with the DYC Sailing Committee via YachtScoring.com, and (c) any other boat invited by the DYC Sailing Committee. For purposes of these Sailing Instructions, “Skipper” is defined as the person in charge of the boat, anyone may steer the boat.

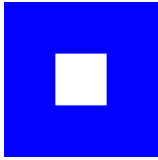


Registration shall be via Yacht Scoring, using this link: www.yachtscoring.com. (Use search box and enter Detroit Yacht Club) Required registration information must be provided by midnight on May 22nd. (or four days before a boat’s first race) to be eligible for **season awards**. **Boats not registered by the deadline, including Flying Scots, may not be eligible for season awards.** Class assignments will be made prior to the first race and will be available in Yacht Scoring and via email to registered competitors.



- 4. OFFICIAL NOTICES** – Official Notices will be (1) posted on the glass-enclosed bulletin boards on the west wall of the DYC first-floor lobby, near the exit door leading toward Main Dock and posted on YachtScoring.com. A courtesy copy may be emailed to the DYC Sailing Committee distribution list, if practical.
- 5. SKIPPERS’ MEETING** – A Skippers’ Meeting covering the Sailing Instructions and the Racing Rules will be held on May 4th at 7:00pm, as well as an introduction to ratings for the season. The Skippers’ Meeting is strongly recommended for all competitors. Questions are to be directed to the Race Chairman John Vermeulen, email: fc12oneton@gmail.com.
- 6. SAIL & POLE LIMITATIONS** - A boat shall carry only those sails that the boat’s rig is designed to carry when sailing close-hauled. A boat designed to carry two headsails on different stays when sailing close-hauled may do so. A ketch or a yawl may carry sails on both masts as well as appropriate headsails. All sails, except storm sails, shall be attached to a mast or a stay for the full length of the luff except when changing sails. Spinnakers, bloopers or staysails shall be not used. Whisker poles or any device used as a whisker pole may be used and held in place by any means. They do not need to be attached to the mast.

7. **CLASSES & STARTING TIMES** - A boat shall start only in the class to which it is assigned. The following are the starting times and signals, but not necessarily in this order **The Race Committee may determine the order of starts for any race. Visual signals shall prevail.** The Race Committee will attempt to announce the starting class on VHF **channel 68** prior to and during their starting sequence but shall not be required to do so.

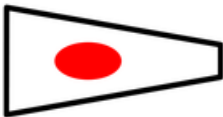
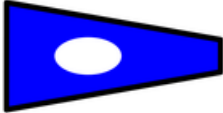
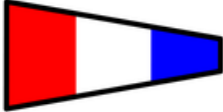

Class 1 = PHRF A		Class 2 = PHRF B		Class 3 = PHRF C		Class 4 = Flying Scots	
Start No.	Time Races 1 - 9	Time Race 10	Meaning & Sounds		Visual Signal		
-	1854 hours	1824 hours	Attention Signal (Horn)		None		
-	1855 hours	1825 hours	Warning Signal (Gun)		Numerical pennant # 1 up		
	1856 hours	1826 hours	Preparatory Signal (Horn)		"P" pennant up		
	1859 hours	1829 hours	One Minute Signal (Horn)		"P" Pennant down		
1	1900 hours	1830 hours	Class 1 Start Signal (Gun)		Numerical pennant # 1 down and Numerical pennant # 2 up*		
			Preparatory Signal (Horn)		"P" pennant up		
			One Minute Signal (Horn)		"P" pennant down		
2			Class 2 Start Signal (Gun)		Numerical pennant # 2 down and Numerical pennant # 3 up*		
			Preparatory Signal (Horn)		"P" pennant up		
			One Minute Signal (Horn)		"P" pennant down		
3			Class 3 Start Signal (Gun)		Numerical pennant # 3 down and Numerical pennant # 4 up*		
			Preparatory Signal (Horn)		"P" pennant up		
			One Minute Signal (Horn)		"P" pennant down		
4			Class 4 Start Signal (Gun)		Numerical pennant # 4 down		
			Preparatory Signal (Horn)		"P" pennant up		
			One Minute Signal (Horn)		"P" pennant down		
			Class 4 Start Signal (Gun)		Numerical pennant # 4 down		
<p>* The Warning Signal and all subsequent signals will be in the same sequence as for start 1, but not necessarily beginning with the start of the preceding class. The Race Committee will attempt to broadcast (on channel 68 – see #17) additional information during the starting sequences. The signal sequence for all classes is as follows:</p> <ul style="list-style-type: none"> • Five minutes prior to start Warning Signal (Gun or sound) (Class Pennant up) • Four minutes prior to start Preparatory Signal (Horn) • One minute prior to start One Minutes Signal (Horn) • Start Starting Signal (Gun or sound) (Class Pennant down) 							

Signal Flag References:

Preparatory Flag – or shape “P” – Blue with White Square	
Individual Recalls – “X” – White with Blue Cross	
Shorten Course – “S” – White with Blue Square	

Abandonment – “N” – Blue & White Checks	
Postponement – “AP” Pennant	

8. **STARTING FLAGS - A Numerical Pennant 1-4 and/or a numbered placard for each class shall be displayed during the five-minute period preceding the starting signal for that class.**

Class 1 = Red on White	
Class 2 = White on Blue	
Class 3 = Red, White, Blue	
Class 4 = White on Red	

9. **STARTING & FINISHING LINE** - The starting and finishing line shall be between an orange sleeve displayed from a piling on the Main Dock "T", or in the absence of such sleeve, the staff of a flag with the letters "RC" which may be blue with white letters or yellow with black letters, and the upstream water's edge of a mark (Orange or Red Flag/Buoy/Tetrahedron - "Starting Line Mark") approximately 200 yards to the northwest. All boats not within their 5-minute sequence are to stay outside the Starting Area. The Starting Area is described as the area bounded by the Starting Line, an imaginary line from the "Starting Line Mark" to the West End Buoy CG "RGN", and an imaginary line to the downstream end of Main Dock.

10. **COURSES** - The courses to be sailed are described and illustrated on pages 6 through 12. Note that boats will start going *upstream*. The (RRS) section 27.1 is revised to read as follows: The Race Committee shall display numerical pennants **and/or** placards indicating the starting class and their course at or near the "Warning signal". The letters will indicate the course to be sailed. The following indicates the possible course designations:

<u>Letter(s)</u>	<u>Course to be sailed</u>
LL	Lake Long Course
LS	Lake Short Course
BL	Bayview Long Course
BS	Bayview Short Course
EL	East Long Course
ES	East Short Course
HL	Harbor Hill Long Course
HS	Harbor Hill Short Course

If government marks Rooster Tail "CG1" or West End "RGN" are missing from the course, Race Committee will place inflated tetrahedron marks in the approximate equivalent locations.

11. **POSTPONEMENT** — RRS 27.3 is replaced with the following. A postponement of all races not yet started can be indicated in one of **two different methods**. **One method** is for the Race Committee to display the Answering Pennant (pennant with vertical red and white stripes) or a cylindrical shape with vertical red and white stripes, **accompanied by two guns**

or other sound signals. The postponement signal will be lowered (accompanied by a sound signal) approximately one minute before next signal is displayed. The next signal shall be either: (1) the Warning Signal for the next start and therefore the restarting of the sequence for all following classes, or (2) an **abandonment** signal (Race Committee displays the Flag "N" or a cylindrical shape with **blue and white checks** over Flag "H" or a cylindrical shape with white and red blocks, or over Flag "A" or a cylindrical shape with white and blue blocks, accompanied **by three guns or other sound signals.** As a courtesy, Race Committee may attempt to broadcast postponement information on VHF Channel 68, but is not required to do so.

The **second method** to indicate postponement is for the Race Committee to simply not raise the class pennant or placard for the next starting class, thereby postponing all of the following classes. When the Race Committee wishes to resume the sequence, they will raise the Warning Pennant with a sound (i.e., the warning signal for that class) and the class pennant or placard to continue the sequence. The Race Committee will attempt to have delays a multiple of five minutes.

12. **INDIVIDUAL RECALLS** – Rule 29.1 (Individual Recalls) is modified to read as follows: When at a boat's starting signal any part of her hull, crew or equipment is on the course side of the starting line, the Race Committee will attempt to (a) hail the sail number or name of each boat subject to the recall and (b) inform a boat when it has cleared the starting line to start. **The "x" flag (white with blue cross)** will be displayed until the premature starting boat or boats have returned to the pre-start side of the starting line or for two minutes, whichever happens first. **As a courtesy, Race Committee may attempt to broadcast individual recalls on VHF Channel 68, but is not required to do so.**
13. **SHORTENED COURSE** – RRS 32.2 referring to "Shortened Course after the start" is modified and is as follows. If a committee boat is positioned near a rounding mark displaying a **"S" Shape, Placard or Flag (White with Blue Square)**, all boats are to round that mark leaving it on their port side and then use the short course "sail plan". That is to proceed directly to the 'Finish Line' if the course is shortened at the Roostertail Mark or proceed to the Roostertail Mark then to the finish if the shortened course is at the BYC R'2" Mark or EBC Mark. Boats are to finish downstream in the opposite direction as they started, passing the Starting Line RC Flag on the dock to port and the "Starting Line" mark to Starboard.
14. **ABANDONMENT(S)** – RRS 32.1 referring "Abandoning After the Start" is modified and is as follows: If the Race Committee or the Committee Boat (anywhere on the course) displays the Flag "N" or a cylindrical shape with **blue and white checks**, accompanied by *three* guns or other sound signals. All races are abandoned for the day. **If a Yacht abandons or withdraws from a race under her own volition, the retiring yacht is to contact/inform the Race Committee of her withdrawal as soon as possible, if possible use VHF channel 68.**
15. **TIME LIMIT** – The Racing Rules of Sailing rule #35 is hereby modified as follows. **The time limit for the race is 90 minutes from the starting signal for boats in each class.** The Race Committee will record finishes for boats finishing within the time limit. All others will receive a "DNF" (did not finish).
16. **RADIO MONITORING** – All boats except the Flying Scots are expected to have a VHF radio and are expected to **monitor channel 68** from before their preparatory signal until they reach their mooring.
17. **PROTESTS** – Protest Requirements shall follow RRS 61 unless otherwise described in this paragraph. A Protesting Yacht is to notify the Yacht being protested and the Race Committee of their intention to protest. She is to fly a protest flag (**Red Flag**) on a side stay or back stay as soon as possible after the incident and should attempt to notify the yacht being protested verbally. The Protesting Yacht shall notify the Race Committee of its intent to protest within 5 minutes of crossing the finish line or retiring from the race. Notification of intent to protest via VHF Channel 68 or otherwise does not replace filing a written protest as described in RRS 61.2. The Race Committee will notify the protested Yacht of the protest. The time limit for submitting a written protest to the Race Committee shall be 60 minutes after the protesting boat has notified the Committee of their intention to protest. Protests are to be filed at the DYC Reception Counter - Main Lobby **and** with the PRO for the day. Protest forms are available on the DYC web site and from the PRO, the Race Chairman or the DYC Sailing Committee Chairperson.
18. **RATINGS** - The Race Chairman will assign ratings to each boat, except the Flying Scots, using the current LMPHRF rating (Valid List or PJAM List) and/or other information available to the DYC Sailing Committee (each competitor is requested to acquire the LMPHRF rating for their boat thru LMPHRF). The Race Chairman in case of convenience can use two VPP programs to determine a rating, however, only in case of expediency. This DYC Sailing Committee rating includes the past performance of the skipper/crew or boat or other race events. Appeals (e-mailed request for review) of this rating must be submitted to the DYC Sailing Committee Race Chairman by **May 19th at 1800 hours**. The DYC Sailing Committee's decision will be final.
19. **SCORING** - **There are ten races scheduled for the Series.** Three races shall be completed to constitute the Series. If less than three races are completed, there will be no Series over-all awards.

Scoring of finishes for each race will be determined using a "time-on-time" calculation. In the case of a tie on corrected time, awards will be the same and series scoring will reflect the same points.

SERIES SCORING – The scoring will be per RRS 90.3, utilizing APPENDIX A, including paragraph A9 for RACE SCORES IN A SERIES LONGER THAN A REGATTA as described below.

Points for each race shall be awarded base on low-point scoring (see paragraph A4.1 in Appendix A). Series overall (Season) scores will reflect all boats registered in each class.

In accordance with RRS Appendix A, paragraph A9, boats that came to the starting area but did not start, did not finish, retired or were disqualified shall be scored points for finishing one place more than the number of boats that came to the starting area for that race. A boat that did not come to the starting area at all shall be scored points one more than the number of boats that registered for the series without regard to how many may came to the starting area for that race.

Each boat's score for the Series overall shall be calculated as follows:

- **The sum of her best scores for up to a maximum of six races (scores).**
- If a boat has raced more than six races, her best six races (scores) will be counted.

In case of a tie on total points for the Series between two or more boats, the tie will be broken as follows (not using paragraph A8 of Appendix A):

- (a) In favor of the boat with the most first place finishes.
- (b) If the tie remains, in favor of the boat with the most second place finishes and so on till the tie has been broken.
- (c) If the tie still remains, it shall be broken in favor of the boat that beat the other most often.
- (d) If the tie still remains, it shall be broken in favor of the boat with the highest finish in the last race that they both competed against each other.

If there is a tie (on corrected time) for a given race, each tied boat will receive the sum of the scores of the tied boats divided by the number of tied boats.

20. AWARDS. Awards for individual races will be made at the DYC Starboard Haven (a/k/a Grill Bar), or other designated area at approximately 2100 hours (9:00pm). Awards will be presented for first, second and third place finishers. If less than three boats are in the race, awards will be given to those who competed. Example, if only one boat is in the race, she will be awarded the first-place award. Awards for the Series will be presented on a date to be determined by the DYC Sailing Committee. **A representative for the boat receiving an award must be present at the time of the awards.**

21. INTERFERENCE WITH SHIPPING - When crossing a shipping channel, boats shall not interfere with major ships (Federal Law 89-764). Participants at all times shall abide by USCG Rule 18, which reads in part: "(b) A sailing vessel underway shall keep out of the way of: ... (ii) a vessel restricted in her ability to maneuver." Any boat that violates these provisions shall be subject to protest and disqualification and suspension from further participation in the series. Boats may use their engines to stay clear of commercial shipping. However, in doing so they are not to better their position in the process.

22. ASSUMPTION OF RISK - By participating in any race of the series, each person aboard as skipper, crew or otherwise (a) acknowledges that racing sailing boats has certain inherent risks and can be a dangerous activity and (b) nevertheless voluntarily assumes all such risks, and waives any and all claims that he or she may have for damages of any kind against the DYC, it's race committee or any officer, director, member, employee or agent of the DYC, arising out of or related to his or her participation in any such race. **The skipper and crew shall be responsible for deciding whether to start or to continue each race of the series.**

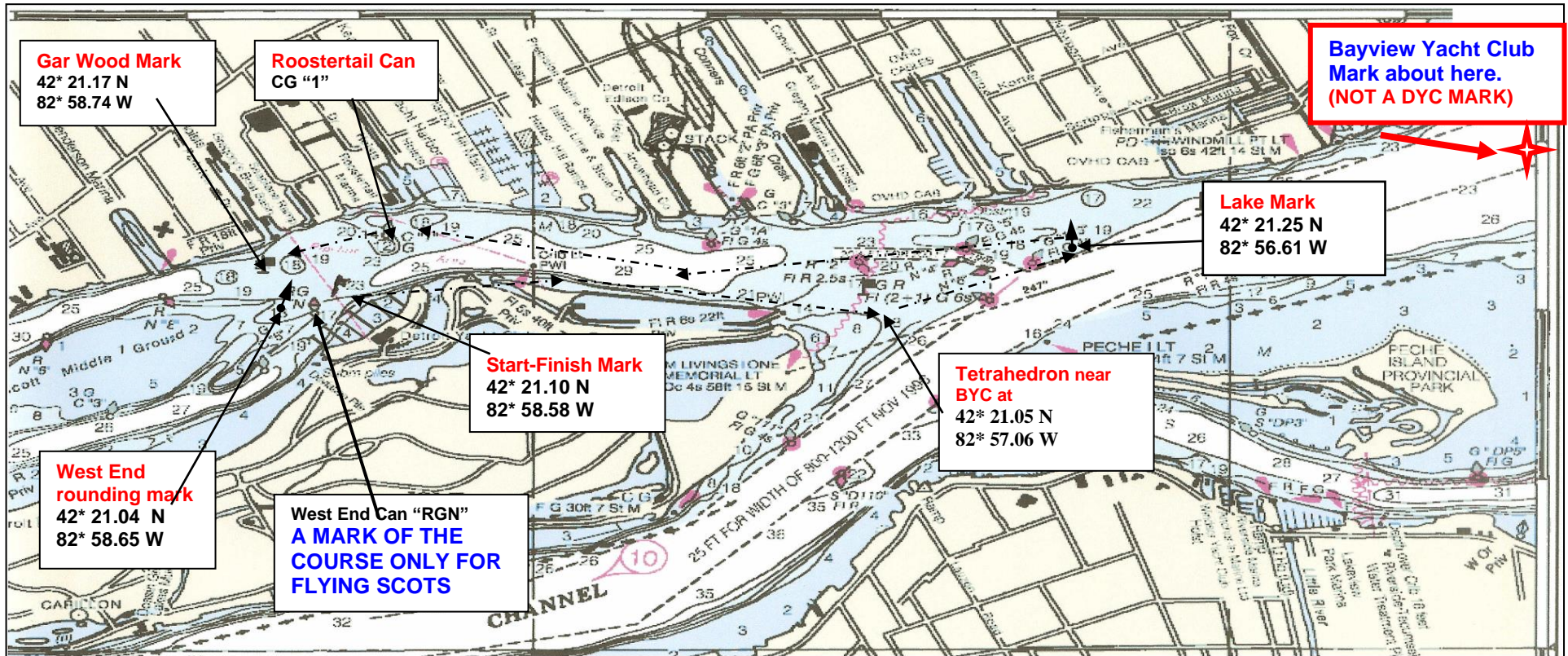
23. SAFETY & SAFETY EQUIPMENT – Any boat participating in any race of this series shall be seaworthy in hull, rigging and gear and **sailed by two or more persons** who are competent to sail in an event of this kind. **Safety Equipment -** The skipper of a participating boat acknowledges that he or she is aware of the safety equipment required by the United States Coast Guard to be carried aboard the boat and accepts full responsibility for deciding what additional safety equipment is necessary for the safety of the boat and crew under the circumstances. During each race in which a boat participates, the skipper shall insure that all such required and additional equipment will be aboard (not protestable), in accessible locations and in good working order, and the skipper shall assure that each member of the crew and any others aboard during this race know the location and proper use of all such equipment.

24. DISPOSAL OF TRASH – Any yacht observed discharging trash overboard shall be subject to protest and disqualification from the total series!

DYC OFF-THE-DOCK RACE SERIES - COURSE DIAGRAMS

Except as stated in the Sailing Instructions, none of the aids to navigation shown in the diagram are considered marks of the course. These diagrams are not to be used for navigation.

Lake Long Course – From the **Starting Line** (passing the Starting Line RC Flag on Main Dock to starboard and the Starting Line Mark to port) to a **tetrahedron** across from **Bayview Yacht Club** at 42° 21.05 N / 82° 57.06 W. Pass that mark leaving it on your port side and proceed to a tetrahedron (**Lake Mark**) positioned approximately 200 yards off shore (42° 21.25 N / 82° 56.61 W) & just about at the entrance to the Fischer canal. Round that mark leaving it on your port side and proceed to the **Buoy CG"1"** (**Roostertail Mark**) near the Roostertail, leaving (passing) that buoy leaving it on your port side. Continue downstream to a **tetrahedron** positioned approximately 100 yards from shore and near the **'Gar Wood Judges Stand'** passing that mark to port. Then to the **West End rounding mark** (42° 21.04 N / 82° 58.65 W), a tetrahedron or flag to be left to port it will be near **the West End Buoy CG "RGN"** (which is **not a mark of the course, EXCEPT FOR THE FLYING SCOTS**). Proceed upstream crossing the **Finish Line**, which will be the same as was the Starting Line.

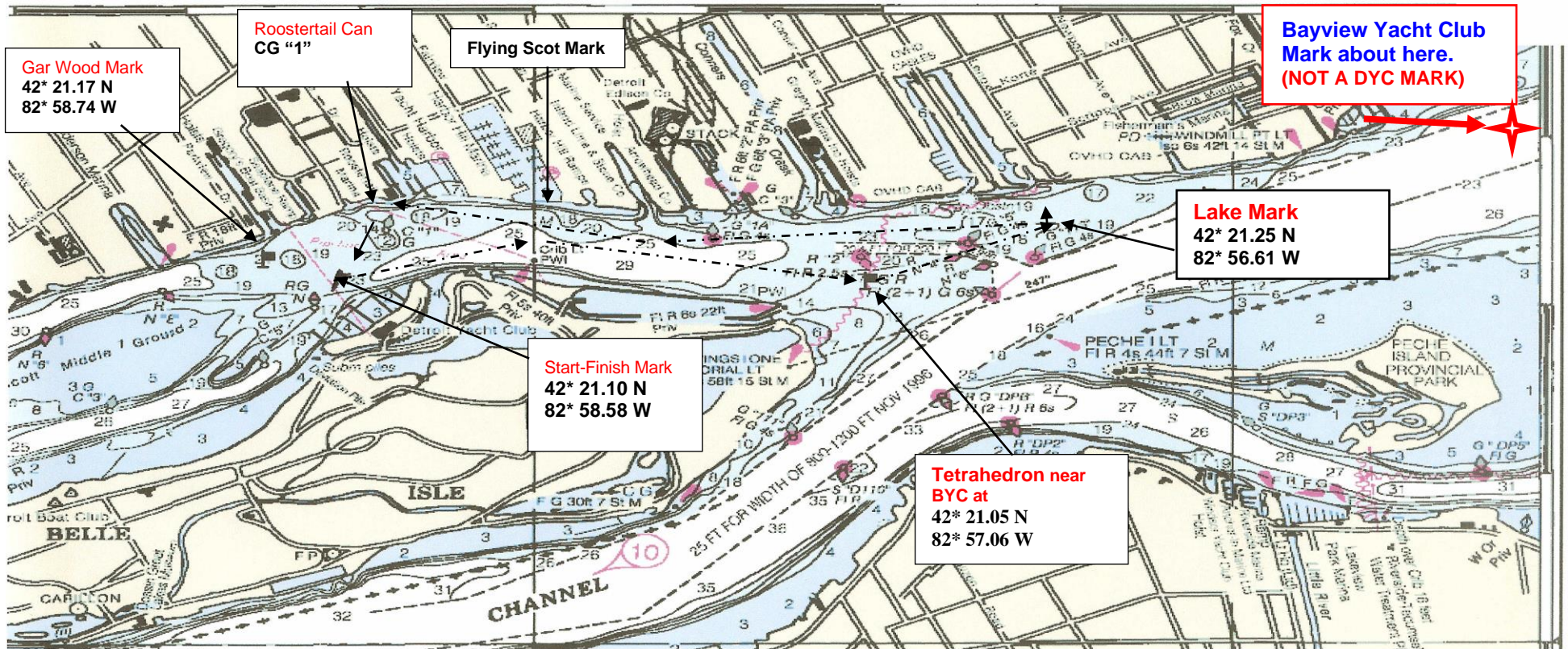


DYC OFF-THE-DOCK RACE SERIES - COURSE DIAGRAMS

Except as stated in the Sailing Instructions, none of the aids to navigation shown in the diagram are considered marks of the course.

These diagrams are not to be used for navigation.

Lake Short Course – From the **Starting Line** passing the RC Flag on Main Dock to starboard and the **Starting Line Mark** to port to a tetrahedron across from **Bayview Yacht Club** at 42° 21.05 N / 82° 57.06 W. Pass that mark leaving it on your port side and proceed to a tetrahedron (**Lake Mark**) positioned approximately 200 yards off shore at 42° 21.25 N / 82° 56.61 W & just about at the entrance to the Fischer canal. Pass that mark leaving it on your port side and proceed to the **Buoy CG"1"** (**Roostertail Mark**) near the Roostertail, passing (rounding) that buoy leaving it on your port side. Proceed from there to the **Finish Line**, passing the Starting Line RC Flag to port and the Starting Line Tetrahedron to Starboard, finishing downstream in the opposite direction as you started.

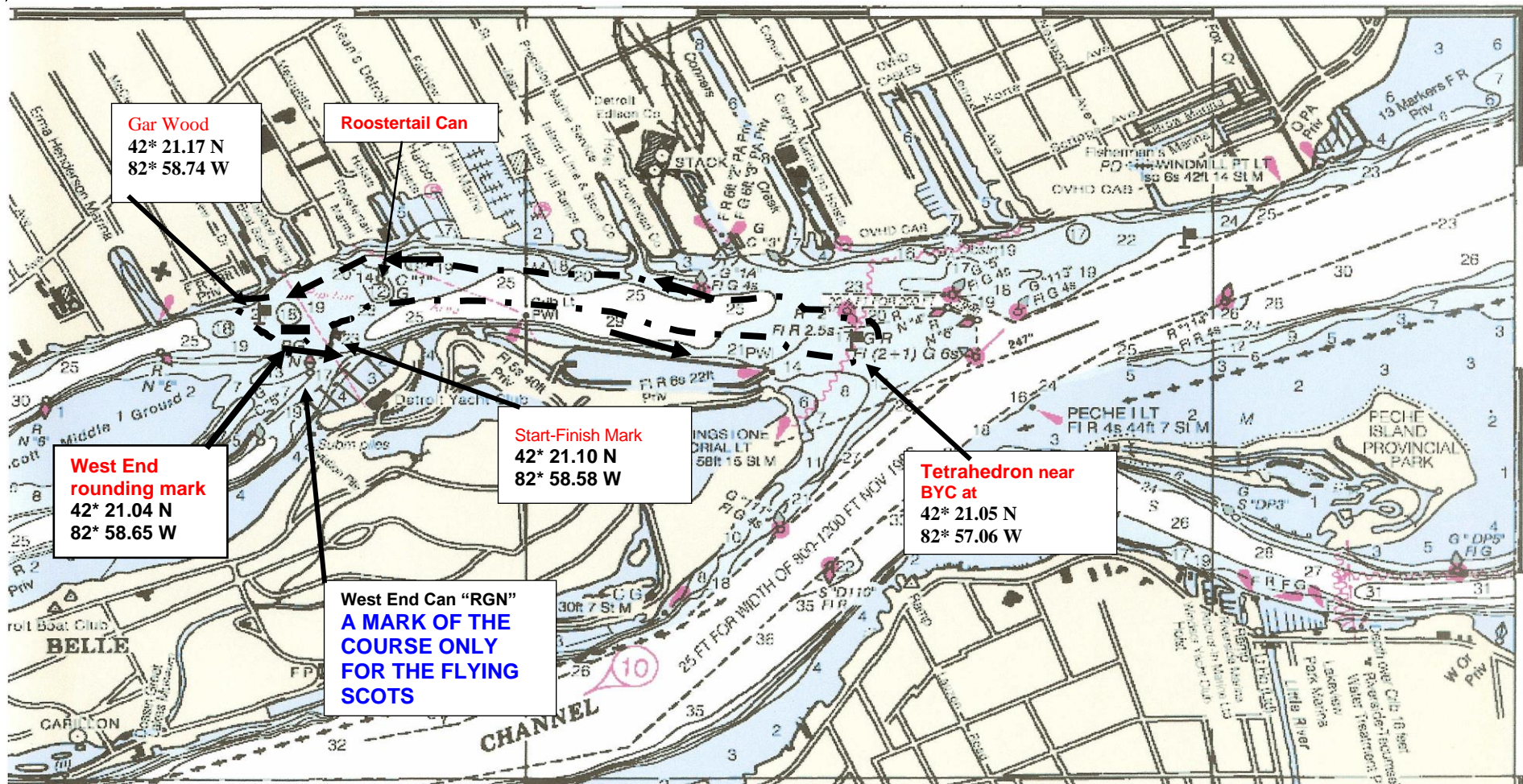


DYC OFF-THE-DOCK RACE SERIES – COURSE DIAGRAMS

Except as stated in the Sailing Instructions, none of the aids to navigation shown in the diagram are considered marks of the course.

These diagrams are not to be used for navigation.

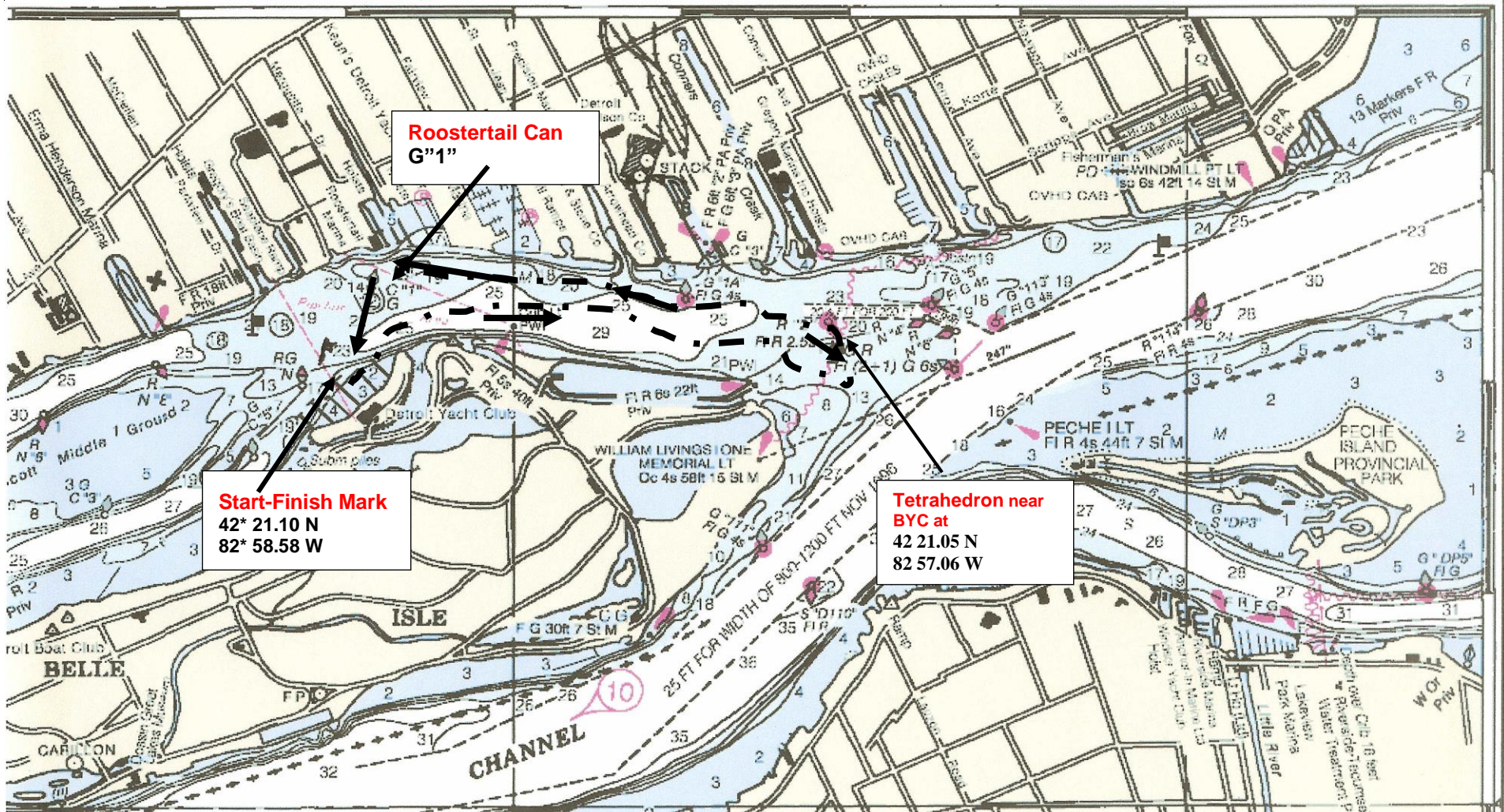
Bayview Long Course – From the **Starting Line** (passing the RC Flag on Main Dock to starboard and the Starting Line Mark to port) to a tetrahedron across from **Bayview Yacht Club** at $42^{\circ} 21.05\text{ N} / 82^{\circ} 57.06\text{ W}$. Round that mark leaving it on your port side and proceed to the **Buoy CG "1"** near the **Roostertail**, passing that buoy leaving it on your port side. Continue downstream to a tetrahedron positioned approximately 100 yards from shore and downstream of the **'Gar Wood Judges Stand'** passing (rounding) that mark leaving it on your port side. Next is the **West End** rounding mark ($42^{\circ} 21.04\text{ N} / 82^{\circ} 58.65\text{ W}$), which is a tetrahedron or flag to be left to port it will be near the **West End Buoy CG "RGN"** which is **not a mark of the course, EXCEPT FOR THE FLYING SCOTS**. Then proceed upstream crossing the **Finish Line**, which will be the same as was the Starting Line passing the RC Flag to starboard and the Starting Line tetrahedron Mark to port.



DYC OFF-THE-DOCK RACE SERIES - COURSE DIAGRAMS

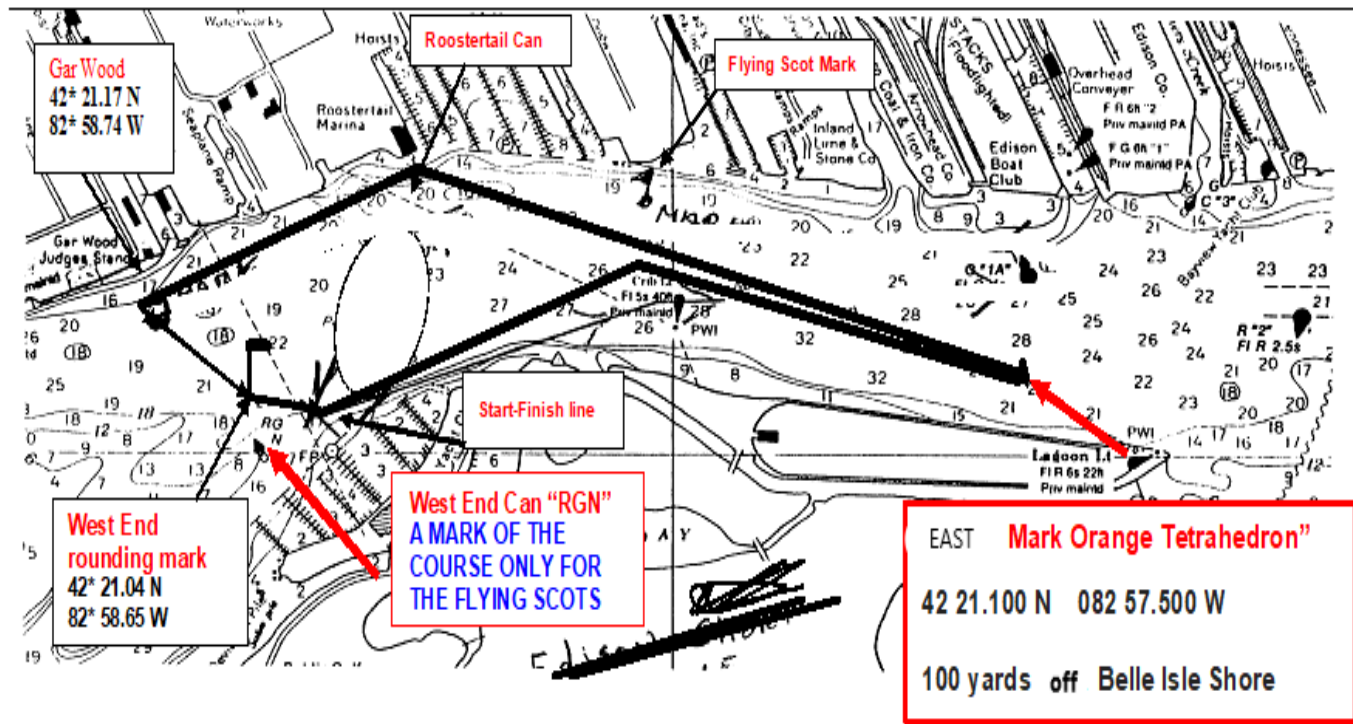
Except as stated in the Sailing Instructions, none of the aids to navigation shown in the diagram are considered marks of the course. These diagrams are not to be used for navigation.

Bayview Short Course – From the **Starting Line** (passing the RC Flag on Main Dock to starboard and the Starting Line Mark to port) to a tetrahedron across from **Bayview Yacht Club** at 42° 21.05 N / 82 57.06 W. Round that mark leaving it on your port side and proceed to the **Buoy CG"1"** near the **Roostertail**, passing (rounding) that buoy leaving it to your port side. Then proceed from there to the **Finish Line**, passing the Starting Line RC Flag to port and the Starting Line tetrahedron to Starboard, finishing downstream in the opposite direction as you started.

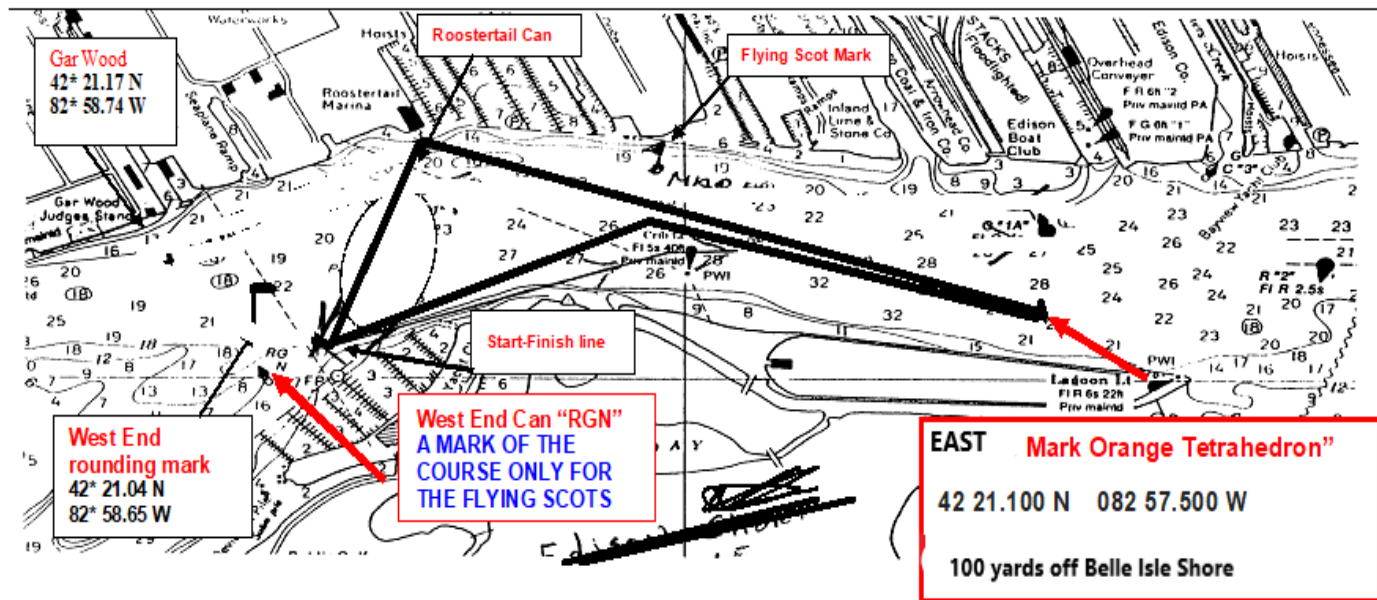


East Couse Long:

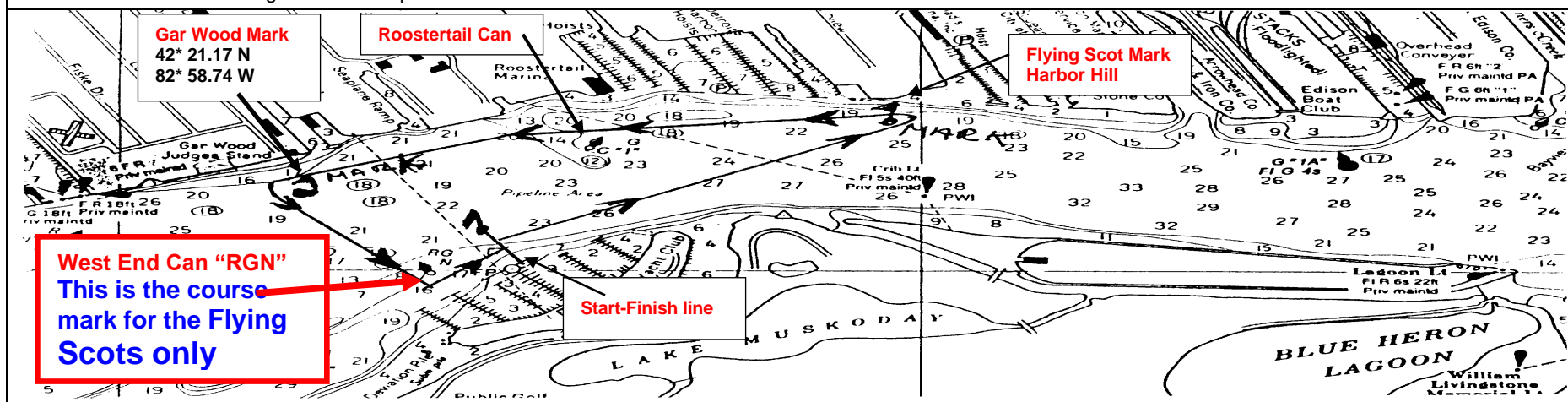
– From the **Starting Line** (passing the RC Flag on Main Dock to starboard and the Starting Line tetrahedron to port) to orange tetrahedron off Belle Isle. Round that mark leaving it on your port side and proceed to the Buoy CG "1" near the **Roostertail**, passing (rounding) that buoy to port. Continue downstream to a **mark (tetrahedron)** positioned approximately 100 yards from shore and downstream of the '**Gar Wood Judges Stand**' passing (rounding) that mark leaving it on your port side. Next is the **West End** rounding mark ($42^{\circ} 21.04 / 82^{\circ} 58.65$), which is a tetrahedron or flag to be left to port, it will be near the **West End Buoy CG "RGN"** which is **not a mark of the course, EXCEPT FOR THE Scots**. Then proceed upstream crossing the **Finish Line**, which will be the same as was the Starting Line passing the Starting Line RC Flag to starboard and the Starting Line Mark to port.



EAST Short Course – From the **Starting Line** (passing the RC Flag on Main Dock to starboard and the Starting Line Mark to port) to orange tetrahedron off Belle Isle. Round that mark leaving it on your port side and proceed to the **Buoy CG"1"** near the **Roostertail**, passing (rounding) that buoy to port. Then proceed from there to the **Finish Line**, passing the Starting Line RC Flag to port and the Starting Line **tetrahedron** to Starboard, finishing downstream in the opposite direction as you started



Class 4 Long Course - From the **Starting Line** (passing the RC Flag on Main Dock to starboard and the Starting Line Mark to port) to a **Mark (flag or tetrahedron)** positioned approximately 100 yards off shore of **the Harbor Hill** entrance. Round that mark leaving it on your port side and proceed to the **Buoy CG"1"** near the **Roostertail**, passing that leaving that buoy on your port side. Continue downstream to a **Mark (tetrahedron)** positioned approximately 100 yards from shore and downstream of the '**Gar Wood Judges Stand**' passing (rounding) that mark leaving it on your port side. The next mark is the **West End Buoy CG "RGN"**, which is to be rounded leaving it on your port side. Then proceeding upstream crossing the **Finish Line**, which will be the same as was the Starting Line passing the Starting Line RC Flag to starboard and the Starting Line Mark to port.



Class 4 Short Course - From the **Starting Line** (passing the RC Flag on Main Dock to starboard and the Starting Line Mark to port) to a **Mark (flag or tetrahedron)** positioned approximately 100 yards off shore and just down stream from the **Harbor Hill** Entrance. Round that mark leaving it on your port side and proceed to the **buoy CG"1"** near the **Roostertail**, passing (rounding) that buoy leaving it to port. Then proceeding from there to the **Finish Line**, passing the Starting Line RC Flag to port and the Starting Line Flag/Buoy/Tetrahedron to Starboard, finishing downstream in the opposite direction as you started.

