



# Annapolis Classic Wooden Sailboat Race



Sunday, 10 September 2023

ORGANIZING AUTHORITY

Eastport Yacht Club

## SAILING INSTRUCTIONS

The notation “[NP]” in a rule means that a boat may not protest another boat for breaking that rule. This changes RRS 60.1(a).

### 1 RULES

- 1.1 The event shall be governed by the *rules* as defined in the *Racing Rules of Sailing* (RRS).
- 1.2 A spinnaker, or any other sail(s) (e.g., mizzen staysails, gollywobblers, gaff topsails and fisherman staysails), is permitted if the boat’s design originally included one or they are now used in your class.

### 2 CHANGES TO THE SAILING INSTRUCTIONS

Any change to the Sailing Instructions (SIs) will be posted before 0800 on the day it will take effect, except that any change to the schedule of races will be posted by 2000 on the day before it will take effect.

### 3 COMMUNICATIONS

Race Committee (RC) intends to monitor and communicate with competitors on VHF radio channel 73 while on the water.

### 4 SIGNALS MADE ASHORE

- 4.1 Signals made ashore will be displayed from the Eastport Yacht Club (EYC) flagpole, located on the waterside of the clubhouse.
- 4.2 RC may announce signals posted ashore on VHF channel 73, and/or text message, and/or email. This announcement, lack thereof or contents thereof shall not be grounds for Redress or Protest. This changes RRS 41 and 62.1(a).
- 4.3 When flag AP is displayed ashore, “1 minute” is replaced with “not less than 60 minutes” in Race Signals AP.

### 5 CHECK-IN

Boat shall not attempt to check in with the RC Signal Vessel.

### 6 COURSES

- 6.1 RC shall designate the course to be sailed no later than 1700 on Saturday, 09 September 2023. The course and corresponding start times will be posted on the Official Notice Board.
- 6.2 [DP] Once properly started, boats shall not sail through the starting line, in either direction, when RC is displaying an orange flag. For boats that have already started, the starting line shall be considered an obstruction. This changes RRS 28.1.
- 6.3 [DP] The finish line shall be considered an *obstruction* when RC is displaying a blue flag.

### 7 MARKS

The marks that may be used and their approximate locations are shown in Figure 1.





# Annapolis Classic Wooden Sailboat Race Sailing Instructions



## 8 THE START

- 8.1 This shall be a pursuit race with a reverse Time over Distance (ToD) starting order. The boat with the slowest rating (highest number) shall start first and the fastest rating (lowest number) shall start last.
- 8.2 The RC shall signal the starting sequence as follows. This changes RRS 26.

Time	Signal	Flag / Sound
1100	Warning signal for all boats	Raise large EYC burgee with 1 sound
1101	Preparatory signal for the first boat to start	Raise code flag "P" with 1 sound
1104		Lower code flag "P" with a long sound
1105	Starting signal for the first boat to start	Lower large EYC burgee and briefly raise number pennant "0" with 1 sound
Each subsequent start time	Starting signal for remaining boats	Briefly raise number pennant "0" with 1 sound

- 8.3 A boat's individual preparatory signal is four (4) minutes prior to her individual scheduled start. After the first boat has started, there will be no visual signal or sound for any subsequent preparatory signal. This changes RRS 26.
- 8.4 The start times for all boats shall be based on their Classic Wooden Sailboat ToD handicap. The race shall use GPS time synchronization. The RC will attempt to broadcast a five (5) second countdown for each starting time on VHF channel 73. Failure of the RC to announce a start time will not be grounds for redress. This changes RRS 41 and 62.1(a).
- 8.5 The starting line shall be between a staff displaying an orange flag on the RC Signal Vessel and G "9" Q G.
- 8.6 [DP] After the Warning signal for the first start, boats shall stay clear of the starting area until four (4) minutes before their scheduled starting time.
- 8.7 In the event a postponement is signaled on the water, RC shall announce the revised start times on VHF channel 73 before lowering flag AP. Postponements will be extended in blocks of ten (10) minutes.

## 9 RECALLS

- 9.1 If any part of a boat's hull is on the course side of the starting line at her starting signal and she is identified, she shall be considered On Course Side (OCS). She shall not attempt to clear herself, start, or restart, and shall, instead, sail to the first mark. The RC will attempt to broadcast her sail number on VHF channel 73. Flag X will not be used. This changes RRS 29.1.
- 9.2 [DP] [NP] A boat that is scored OCS shall, without a hearing, be penalized by having ten (10) minutes added to her finish time. In RRS 28, the word "start" is replaced with "start or take a penalty in accordance with SI 9.2." This changes RRS 28, 63.1, A4, and A5.

## 10 THE FINISH

- 10.1 The finishing line shall be between a staff displaying a blue flag on the RC vessel and the course side of G "9" Q G.
- 10.2 The RC may shorten the course at any rounding mark in accordance with RRS 32.

## 11 TIME LIMITS

- 11.1 The race time limit is 3.5 hours after the start of the first boat.
- 11.2 The finishing window is ninety (90) minutes after the first boat sails the course and finishes.
- 11.3 If a boat has *sailed the course* within the race time limit, all other boats will be scored. Those that finished within the finishing window will be scored in their finishing order. Those who have not finished within the finishing window will be scored Time Limit Expired (TLE). This changes RRS 35, A5.1, A5.2, and A10.





# Annapolis Classic Wooden Sailboat Race Sailing Instructions



## 12 HEARING REQUESTS

- 12.1 Scoring Inquiries shall be submitted within the Protest Time Limit.
  - a. Scoring inquiries shall be submitted via the “Online Scoring Inquiry Filing” link found on the Yacht Scoring event main page.
  - b. Scoring inquiries may be resolved via teleconference or video conference.
- 12.2 Protests and Requests for Redress shall be submitted within the Protest Time Limit. Electronic submittal shall be used and is available via the “Owner’s Corner” link found on the Yacht Scoring event main page or via email to [race.committee@eastportyc.org](mailto:race.committee@eastportyc.org). A diagram of the incident, if applicable, cannot be submitted via Yacht Scoring, and should be scanned and emailed to the RC at [race.committee@eastportyc.org](mailto:race.committee@eastportyc.org) prior to the hearing.
- 12.3 The alternative penalty acceptance form (RRS Appendix V2) will be available via the “Documents & Forms” link found on the Yacht Scoring event main page. The form may also be emailed to the RC at [race.committee@eastportyc.org](mailto:race.committee@eastportyc.org).
- 12.4 The protest time limit is sixty (60), minutes after the RC Signal Vessel dock time. This posting constitutes the notification required in RRS 61.3. The time limit for a Request for Redress based on an incident in the racing area shall be the Protest Time Limit. This changes RRS 62.2.
- 12.5 The Protest Committee may schedule a hearing prior to the Protest Time Limit if the parties and witnesses are available and have had time to prepare for the hearing. The parties to a virtual hearing are responsible for having their witnesses, if any, present at the beginning of the hearing. The time and location of each protest hearing will be posted on the Official Notice Board. The Zoom address of each hearing will be communicated by email to each party. Parties and witnesses are encouraged to download and review the *Online Hearing Procedure Guidelines*, available via the “Documents & Forms” link found on the Yacht Scoring event main page.

## 13 SCORING

- 13.1 Ratings will be in accordance with the Classic Wooden Boat ToD rating, and boats will be scored in the order of finish within each class.
- 13.2 If RC shortens the course, each boat’s corrected time will be calculated based on the actual distance sailed, and the results will be in accordance with corrected times.
- 13.3 A boat scored TLE shall be scored points for the finishing place two (2) more than the points scored by the last boat that finished within the time limit. This changes RRS 35, A5.1, A5.2, and A10.

## 14 SAFETY REGULATIONS

- 14.1 If the wind is too strong for safe racing, RC will notify the competitors by 1030 on the day of the race, and will attempt to contact any boats already on the water by hailing and/or using VHF radio channel 73.
- 14.2 [DP] [NP] A boat that retires from a race shall notify the RC as soon as possible either by hail on VHF channel 73 or by phone on the, or via the EYC cell phone, (410) 271-7193, or via email at [race.committee@eastportyc.org](mailto:race.committee@eastportyc.org). A voicemail message shall include the approximate time of the message, the skipper’s name, boat name, and sail number.
- 14.3 [DP] [NP] A boat shall not exercise right of way, cross in proximity to, or interfere with reasonable transit of the race area by commercial traffic of any kind. Boats must take evasive action well in advance of a potentially dangerous situation. The US Coast Guard, ship captains, and bay pilots have been encouraged to report any incident they observe.
- 14.4 [NP] A boat without way may use any means of propulsion to avoid underway commercial traffic, provided:
  - (a) the boat does not gain an advantage;
  - (b) using propulsion is the only means of avoiding the commercial traffic; and,
  - (c) the boat submits a report (in writing or by email) to the RC by the protest time limit that describes the incident and the boat’s actions.
- 14.5 [NP] The RC or Protest Committee may protest a boat for SI 14.3 and/or 14.4 based on information received from any source. The protest time limit does not apply. This changes RRS 60.2, 60.3, and 61.3.







15 ENVIRONMENT

[NP] This is a Clean Regatta. All competitors are encouraged to use multi-use water bottles instead of disposable water bottles, and to recycle whenever possible.

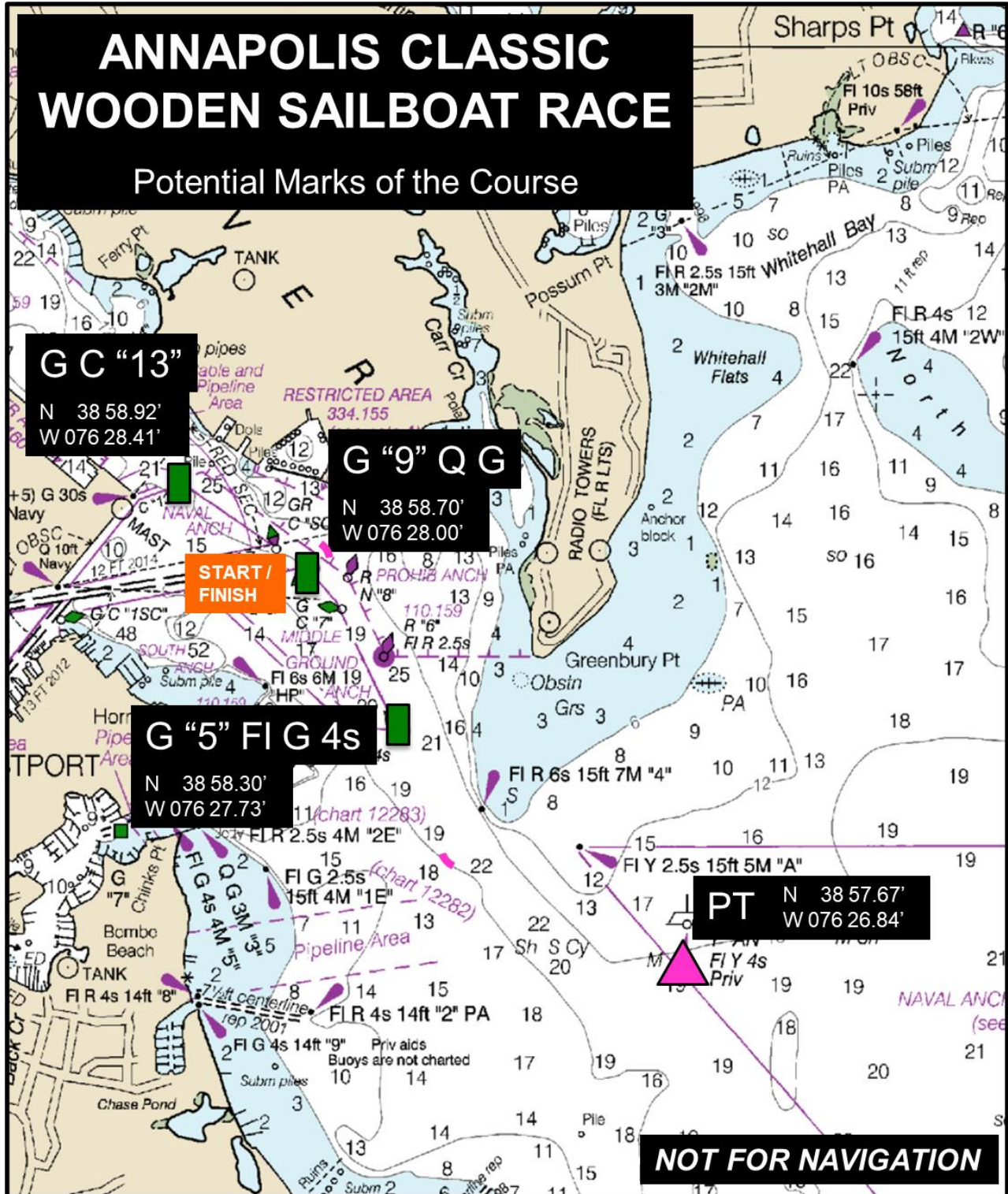


Figure 1. Classic Wooden Boat Race – Potential Race Marks and Locations

