

## 2023 Senior Bay Week Regatta

Organizing Authority: Inter-Lake Yachting Association (I-LYA)

August 4-6 2023

### SAILING INSTRUCTIONS for the PHRF KEELBOAT COURSE & SINGLEHANDED Class

The notation '[DP]' in a rule in the SI means that the penalty for a breach of that rule may, at the discretion of the protest committee, be less than disqualification. The notation '[NP]' in a rule in the SI means that instruction is not grounds for protest or a request for redress by a boat. This changes RRS 60.1.

#### 1 RULES

- 1.1 The regatta is governed by the rules as defined in the current *Racing Rules of Sailing* (RRS).
- 1.2 US Sailing prescription to RRS 63.2 and 63.4 shall not apply.
- 1.3 RRS Appendix V shall apply as changed by SI 13.2.
- 1.4 In the event of a conflict between the Notice of Race and the Sailing Instructions, the Sailing Instructions shall prevail. The changes RRS 63.7.

#### 2 NOTICES TO COMPETITORS AND INFORMATION MEETING(S)

- 2.1 Notices to competitors shall be posted on the official notice board located at the Pavilion at the Put-in-Bay Yacht Club. (PIBYC)

#### 3 CHANGES TO SAILING INSTRUCTIONS

- 3.1 Except for instructions 3.2 and 3.3 below, any change to the sailing instructions shall be posted not less than two (2) hours prior to the first scheduled race on the day it shall take effect.
- 3.2 Any change to the location of a racing area shall be posted before 0730 on the day it will apply.
- 3.3 Any change to the schedule of races will be posted by the later of 2000 or the protest time limit on the day before it will take effect.

#### 4 SIGNALS MADE ASHORE

- 4.1 Signals made ashore shall be displayed from the yardarm on the pier at the Put-in-Bay Yacht Club. Signals may be duplicated from the Race Committee (RC) Boat in the harbor.
- 4.2 When flag AP is displayed ashore, "1 minute" is replaced with "not less than 60 minutes" in race signal AP. *This changes race signals AP*
- 4.3 Since numeral pennants are used as class flags, the RRS Race Signals section "AP over a numeral pennant 1-9" is deleted in its entirety.
- 4.4 When a signal flag is posted ashore, the code flag corresponding to each course name shall be displayed to indicate which course the signal is designated for. If no course designator is posted, the signal shall be for all courses.

#### 5 SCHEDULE OF RACES

- 5.1 A total of Five (5) or more races are scheduled for PHRF classes and Three (3) races for the Singlehanded class.
- 5.2 The skippers meeting will be held at the I-LYA Monument on the dock side of DeRivera Park.
- 5.3 The scheduled times are:

Friday August 4, 2023	Skippers Meeting	0745
	First Warning Round Islands Race	0925
	Additional races to follow	
Saturday August 5, 2023	Skippers Meeting	0745
	First Warning Round Islands Race	0925
	Additional races to follow	
Sunday August 6, 2023	Skippers Meeting	0745
	First Warning Round Islands Race	0925
	Additional races to follow	
	No initial warning signals after:	1200
<b>*** Fri,Sat,Sun Singlehanded Class</b>	Separate start before Islands races	<b>***0855 first warning</b>

- 5.4 When more than one race will be held on the same day, the warning signal for each succeeding race shall be made as soon as practicable at the race committee's discretion.
- 5.5 When more than one race will be held on the same day, subsequent races for each class/division will start shortly after last finisher of that class's preceding race.
- 5.6 After the first race of the day, the Race Committee may change the start order to facilitate the timely start of the next race. Class flags will determine the start order.
- 5.7 On Sunday, no initial warning signal will be made after 1200 hours.
- 5.8 All boats and gear will clear C-Dock on Sunday morning. All boats returning to the harbor on Sunday will go to A-dock. All boats shall vacate A-Dock on Sunday by 1500 hours. Boats remaining on A-Dock after 1500 hours will be subject to regular Put in Bay dock fees.

**6 CLASS FLAGS AND INITIAL ORDER OF START**

Class flags, class splits and order of start for the first race on each day will be posted in the PIBYC pavilion on the official notice board.

**7 RACING AREA**

Keel Boat Course starting area will be to the Southwest of Rattlesnake Island.

**8 THE COURSES**

- 8.1 **PHRF Around the Islands** Courses ( 0-9 Attachment 1) & **Single Handed Islands** courses (1-5 Attachment 1)  
Mark Sequences: The possible courses to be sailed, including the order in which the marks are to be passed, and the side on which each mark is to be left, are shown in the diagrams in Attachment 1.
- 8.2 For PHRF( courses 0-9) and Singlehanded( courses 1-5), Mark #1 is to be ½ mile to windward of the Start line and rounded either to port or starboard depending on the course to the next mark. Before the start, the Race Committee will display either a RED flag (port rounding) or GREEN flag (starboard rounding),
- 8.3 Attachment 2 shows the approximate location of the marks for the around the islands race(s).
- 8.4 The approximate magnetic bearing and distance in nautical miles to the first mark will be displayed from the race committee signal boat prior to the warning signal for each race. An example is shown below:

6	Course to be sailed according to Attachment 1
270	Approx. magnetic bearing to weather mark
.5	.5 nm to weather mark

**9 MARKS**

- 9.1 Mark 1 shall be a Large **orange** inflatable tetrahedron(tet).
- 9.2 The starting mark shall be an Small **orange** tet.
- 9.3 The finishing mark shall be a Small **yellow** tet.
- 9.4 New marks, as provided in instruction 11.1, shall be Large **yellow** tet.

**10 THE START**

- 10.1 For all classes and racecourses, the starting line shall be on the **Port** side between a staff displaying an **orange** flag on the signal vessel and the course side of the mark described in instruction 9.4.
- 10.2 Boats whose warning signal has not been made shall avoid the starting area during the sequence for other races. [DP][NP]
- 10.3 A boat that does not start within four (4) minutes of her starting signal shall be scored Did Not Start without a hearing. *This changes rules A4 and A5.*
- 10.4 If any part of a boat's hull, crew or equipment is on the course side of the starting line at her starting signal and she is identified, the race committee will attempt to broadcast her sail number on VHF channel 72. Failure to make a broadcast, the order of sail numbers called, or to time it accurately will not be grounds for a request for redress. This changes RRS 62.1(a).

**11 COURSE CHANGES**

- 11.1 **Before the starting signal** - If there is a significant wind shift during a series of starting sequences, the RC may signal a change of course for a class as follows: A postponement may be signalled to allow the RC to reset the line. Flag C will be displayed from the signal vessel prior to the warning signal. The magnetic bearing of the new weather mark will be displayed and attention to the change of course will be made by multiple sound signals. The new Mark 1 will be **yellow**, but after a second change during the race, the changed mark will be **orange**. Flag C will continue to be displayed to each class for which the yellow Mark 1 applies.

## 12 THE FINISH

- 12.1 **PHRF Islands races** shall finish between a staff displaying a Blue flag on the signal boat and the mark described in instructions 9.5 on the **Starboard side** of the signal boat. Depending on the course being sailed finish may be in either direction.
- 12.2 **Singlehanded class Islands races** Shall finish by passing between two Large Round Yellow buoys from west to east. Finish line will be positioned east of the Benson Ford Freighter wheel house on the north west side of South Bass Island. Approximate Lat /Long

## 13 PENALTY SYSTEM

- 13.1 **Penalties at the time of the incident:** The first two sentences of rule 44.1 are changed to: "A boat may take a One-Turn Penalty when she may have broken a rule of Part 2 or rule 31 while racing. However, when she may have broken a rule of Part 2 while in the zone around a mark other than a starting mark, her penalty shall be a Two-Turns Penalty."
- 13.2 Penalties within three (3) boat lengths of Mark 1 or on the leg from Mark 1 to Mark 1a may be delayed and taken as soon as possible on the downwind leg. *This changes RRS 44.2 and V1*
- 13.3 **Penalties after the race:** After a race, a boat that may have broken a rule of Part 2 or rule 31 while racing may take a Post-Race Penalty for that incident. The penalty shall be a 20% Scoring Penalty, calculated as stated in rule 44.3(c). However, rules 44.1(a) and (b) apply and the penalty shall not be taken after a protest hearing involving the incident has begun. A boat takes a Post-Race Penalty by informing the race committee in writing and identifying the race number and when and where the incident occurred.

## 14 TIME LIMITS

- 14.1 The Time Limit is five (5) hours for the around islands race (Course 0-9) (Attachment 1). Any boat not finished within the time limit will be scored DNF without a hearing. *This changes RRS 35, A4.1, A5 and A11*
- 14.2 Finishing Window when sailing the around the island race (Course,0-9) (Attachment 1) boats finishing more than 90 minutes after the first finisher in its class will be scored DNF without a hearing. *This changes RRS 35, A4.1, A5 and A11.*

## 15 PROTESTS AND REQUESTS FOR REDRESS

- 15.1 RRS 61.1(a) is changed so that "A boat intending to protest about an incident that occurs in the racing area shall notify the race committee finish boat of her intention as soon as possible after finishing, including the sail number of the boat(s) being protested until acknowledged by the Race Committee signal boat.
- 15.2 Protest forms are available at race headquarters PIBYC. Protests and requests for redress shall be delivered there within the appropriate time limit.
- 15.3 For each class, the protest time limit is one (1) hour after the RC signal vessel docks after the last race of the day or the RC signals no more racing today, whichever is later.
- 15.4 Notices will be posted no later than thirty (30) minutes after the protest time limit to inform competitors of hearings in which they are parties or named as witnesses. Hearings shall be held in the PIBYC Clubhouse, beginning at the time posted on the official notice board. All parties to Protest Meetings shall meet at the Judges Table 10 minutes prior to their scheduled meeting time; Protest Meetings that do not have all Parties present at its start shall move to the end of scheduled Protest Meetings.
- 15.5 Protests by the RC, Technical Committee (TC) or Protest Committee (PC) shall be posted to inform boats under RRS 61.1(b).
- 15.6 On the last scheduled day of racing a request for redress based on a PC decision shall be delivered no later than thirty (30) minutes after the decision was posted. *This changes RRS 62.2.*
- 15.7 If the RC posts a list of boats scored OCS, ZFP, UFD, BFD or TLE on the official notice board before the protest time limit, a request for redress based on such a posted score shall be made no later than one (1) hour after the after the penalties are posted. *This changes RRS 62.2.*

## 16

### SCORING

- 16.1 One (1) race is required to be completed to constitute a series.
- 16.2 A boat's series score shall be the total of her race scores. No scores will be excluded. This changes RRS A2.

- 16.3 Boats scored DNF in accordance with SI 14.3 will receive points equal to the number of boats in her class finishing within the Time Limit as described in SI 14.1 plus one (1) point.
- 16.4 Questions regarding scoring or a boat's rating may be resolved by the proper filing of a Scoring Inquiry Form which shall be available at race headquarters at PIBYC. If the resolution of scoring issue proves unsatisfactory, boats may request redress as available to them under RRS 62.

## 17 SAFETY REGULATIONS

- 17.1 **Check-In** - All boats shall check-in with the Race Committee boat displaying the "L" flag on their assigned race area at least five minutes before the first warning signal of the day. Each boat shall sail past the committee boat and hail her class and sail number until acknowledged by the Race Committee. Radio check ins are discouraged. [DP][NP]
- 17.2 **Retirement** - A boat that retires from a race shall notify the RC as soon as possible or by contacting the race office register at 419-656-0807. [DP][NP]

## 18 EQUIPMENT AND MEASUREMENT CHECKS

On the water, a boat can be instructed by a member of the RC or TC to proceed immediately to a designated area for inspection. Ashore, equipment may be inspected at any time for compliance with the class rules, notice of race, and sailing instructions.

## 19 HAUL-OUT RESRICTIONS AND DOCKAGE

- 19.1 All boats that are docked on Inter-Lake Yachting Association (I-LYA) paid town docks will be required to have streamers attached to the backstay. [DP][NP]
- 19.2 No boat boats shall be hauled out of the water until after the last race Sunday, except for emergencies, without prior written authorization from the RC. [DP]

## 20 RADIO COMMUNICATION

- 20.1 All radio communications between the RC and the competitors shall be on the VHF channel 72.
- 20.2 Various race information, including notification of OCS boats after the start, may be provided by the RC as a courtesy to competitors. This does not in any way alter the competitor's responsibility to observe the RC's visual signals which shall govern the conduct of the racing. [NP]
- 20.3 Except in an emergency, a boat shall neither make radio transmissions while racing nor receive radio communications not available to all boats. [DP][NP]

## 21 PRIZES

- 21.1 First, Second, and Third prizes in each class.
- 21.2 Daily firsts will be given to the first place finisher in the first race for each division.
- 21.3 Other prizes may be awarded at the discretion of the Organizing Authority and/or individual classes.

**DISCLAIMER OF LIABILITY** : Sailing is an activity that has inherent risk of damage and injury. Competitors in this event are participating entirely at their own risk. See RRS 4: "decision to race." The Race Organizers (Organizing Authority, Race Committee, Protest Committee, host club, sponsors or any other organization or official) will not be responsible for damage to any boat or other property; or injury to any competitor, including death, sustained as a result of participation in this event. By participating in this event, each competitor agrees to release the race organizers from all liability associated with such competitor's participation in this event to the fullest extent permitted by law.

For Any Question contact:

Race Chairman :	Doug Seib	216-210-2108	<a href="mailto:dseibracer@aol.com">dseibracer@aol.com</a>
PRO :	Duane Burgoyne	419-280-6102	<a href="mailto:duaneburgoyne@yahoo.com">duaneburgoyne@yahoo.com</a>
Registrar :	Mike Fishbaugh	419-656-0807	<a href="mailto:mfishbaugh@gmail.com">mfishbaugh@gmail.com</a>
Scorer :	Nate Edmunds	734-646-3436	

## PHRF & Jam-Cruising Attachment 1 2023 Bay Week Around the Islands Course Mark Descriptions

GPS Co-ordinates from 2023 Lake Erie Light List. Provided for reference only. Minor variation of actual GPS locations shall not be grounds for redress.

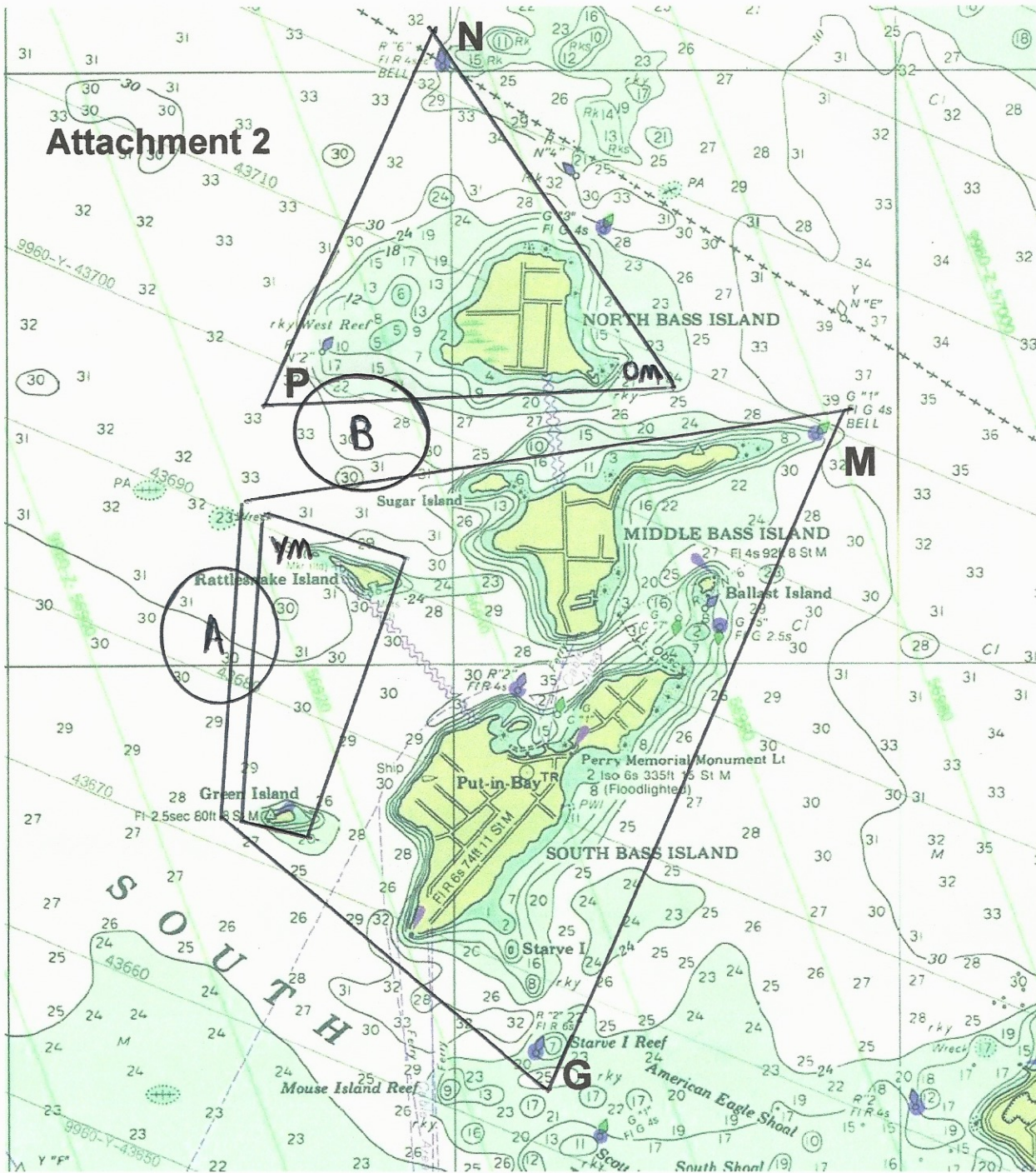
Designation Start/Finish Line	Description Area A : PHRF Start Area Area B: Jam/ Cruising Start Area	Location (Approx.) SW of Rattlesnake Island North of Rattlesnake Island
<b>G</b>	Starve Island Reef Light R2	41°36 .415 N 082°49 .023 W
<b>M</b>	Middle Bass Island East Shoal G1	41°41 .545 N 082°45 .540 W
<b>N</b>	North Bass Island R6	41°45 .019 N 082°50 .052 W
<b>P</b>	North Bass Island Shoal R2	41°42 .368 N 082°51 .279 W
<b>OM – Mark set NBSE</b>	Orange Mark Off Southeast corner of North Bass	41 42' .412 N 082 48' .069 W Approx
<b>YM - Mark Set West of the rattles</b>	Yellow Mark 0.2 nautical miles west of the Rattles	41°40 .982 N 082°51 .828 W Approx
<b>Rattlesnake Island</b>		41° .40' .448 N 082° 50' .575 W
<b>Green Island</b>		41°38' .421 N 082°52 .042 W

For Courses 0 -- 9 the course # to be sailed and the approximate compass direction to Mark#1 will be displayed from the of the signal boat. Mark #1 will be set 1/2 mile to windward of the start line and is to be rounded either to port or to starboard depending on the course to the next mark. If Mark#1 is to be rounded to STARBOARD, a GREEN flag will be flying from the starboard stern of the signal boat. If Mark#1 is to be rounded PORT, a RED flag will be flying from the of the signal boat.

- COURSE # 0** Start – Mark#1– P(s) – N(s) –OM(s) –[ YM(p)PHRF only] --Finish  
**COURSE # 1** Start – Mark#1- [YM(s)PHRF only] -- OM(p) -- N(p) -- P(p)- Finish  
**COURSE # 2 JAM** Start – Mark#1--YM(p) – Green Is(p) – G(p) – M(p) -- Finish  
**COURSE # 3 JAM** Start – Mark#1-- M(s) -- G(s) – Green Is(s) – YM(s) --Finish  
**COURSE # 4 PHRF** Start – Mark#1--Green Is(p) – G(p) – M(p) YM(p) -- Finish  
**COURSE # 5 PHRF** Start – Mark#1--YM(s) – M(s) – G(s) – Green Is(s) -- Finish  
**COURSE # 6 JAM** Start –Mark#1--YM(p)--Green Is(p)--Rattlesnake Is(p)--Finish  
**COURSE # 7 JAM** Start – Mark#1-- Rattlesnake Is(s)–Green Is(s)– YM(s)-Finish  
**COURSE # 8 PHRF** Start –Mark#1--Green Is(p)-Rattlesnake Is(p)--YM(p)--Finish  
**COURSE # 9 PHRF** Start--Mark#1--YM(s)--Rattlesnake Is(s)--Green Is(s)--Finish

## Attachment 2

### 2018 ILYA Bayweek Around the Islands Course Chart



Three possible Around the Islands Courses— Six options--Short , Medium, Long – Either Direction

**A** Approximate PHRF Starting area

**B** Approximate JAM/Crus Starting Area