

INTER-LAKE YACHTING ASSOCIATION

BAY WEEK REGATTA

AUGUST 4-6 2023

PUT-IN-BAY YACHT CLUB

PUT-IN-BAY, OH

JAM, CRUISING COURSE

1. RULES

- 1.1. The regatta will be governed by the rules as defined in current edition of The Racing Rules of Sailing (RRS).
- 1.2. In the event of a conflict between the Notice of Race and the Sailing Instructions, the Sailing Instructions shall prevail. The changes RRS 63.7.
- 1.3. Interference with Government and or Commercial vessels may result in protest by the Race Committee. This changes RRS A5, 35, 63.1 and 67.
- 1.4. The US Sailing Prescriptions to Rule 60, 63.2, do not apply.
- 1.5. Other rules which have been or will be changed are described further in these Sailing Instructions and/or in the Notice of Race.
- 1.6. The Organizing Authority for this regatta is the Inter-Lake Yachting Association (I-LYA).

2. ELIGIBILITY, ENTRY AND PLACEMENT

- 2.1. This event is open to members of US Sailing or members of other National Authorities, members of recognized yacht clubs, members of recognized sailing class associations, and others as may be designated by the Organizing Authority.
- 2.2. The Organizing Authority, at its sole discretion, whose decision is final and without appeal, shall determine eligibility and placement in divisions.
- 2.3. Boats in the Cruising Class must have cruising accommodations below. All boats will adhere to the US Sailing Safety Equipment Regulations (SER) for Nearshore racing.
- 2.4. Races will be conducted using PHRF ratings. Boats having an official rating from any PHRF authority must provide a copy of their current rating certificate to the registrar prior to 2000 hours on Aug 3rd 2023.
- 2.5. Cruising Class boats may enter without a PHRF certificate if they have a boat of recognized construction and rigging with a standard PHRF rating number. Except however, if they wish to claim "cruising credits" or modifications, then they must present a current valid PHRF certificate verifying said Cruising Credits. PHRF ratings will be assigned by the Race Committee for those boats not having PHRF rating certificates based on information certified by the owner. The Race Committee may also assign a different PHRF rating for any boat in the regatta as appropriate in their sole judgment. A likely reason for such an assignment is if identical or very similar boats from different areas have different PHRF ratings.
- 2.5. Cruising Class boats having a roller furling credit must use a furling sail and cannot change sails while racing. All Cruising Class entrants should sail with Dacron sails only. No aramid fiber sail(Carbon, Kevlar) SHOULD be used during Cruising Class races. Only Dacron, Pentax, polyester or Mylar sail materials are allowed. No spinnakers, cruising chutes or bloopers are allowed and a staysail is allowed only if rated as part of a cutter rig. Headsails in excess of 155% LP are allowed only if they have been measured and are included in the PHRF rating.
- 2.6. All boats shall display the streamer included in the racing package on the backstay (or closest equivalent) during all races and as they are docking in the harbor.

3. NOTICES TO COMPETITORS

3.1. Notices to Competitors will be posted on the Official Notice Board located at the Pavilion at the Put-in-Bay Yacht Club.

4. CHANGES TO SAILING INSTRUCTIONS

4.1. Any change to the Sailing Instructions will be posted before 0800 hours on the day it will take effect, except that any change to scheduled races will be posted before 2000 hours the day before it will take effect.

5. SIGNALS MADE ASHORE

5.1. Signals made ashore will be displayed from the yardarm on the pier at the Put-in-Bay Yacht Club. Signals may be duplicated from the Race Committee (RC) Boat in the harbor.

5.2. When flag AP is flown ashore, '1 minute' is replaced with "not less than 60 minutes" in the race signal definition of AP.

6. SCHEDULE OF RACES

6.1 A skippers' meeting will be held DAILY at 0815 at I-LYA Monument on dock side of DeRivera Park.

6.2. The scheduled time for the first warning signal each day is as follows:

	JAM	CRUISING
Friday, August 4, 2022	0955 hours	1005 hours
Saturday, August 5, 2022	0955 hours	1005 hours
Sunday, August 6, 2022	0955 hours	1005 hours

6.3. Two Islands Race are scheduled each day for JAM Classes. CRUISING Class shall sail only one islands race per day.

6.4. On Sunday, no warning signal will be made after 1200 hours.

6.5. All boats returning to the harbor on Sunday will go to their originally assigned dock space.

6.6 All boats shall vacate A-Dock on Sunday by 1500 hours. Boats remaining on A-Dock after 1500 hours will be subject to regular Put in Bay dock fees.

7. CLASS FLAGS & SPLITS

7.1. Class flags & splits will be posted on the official notice board.

8. RACING AREAS

8.1. The starting and finishing area will be North of Rattlesnake Island. See attachments 1 and 2.

9. COURSES

9.1. Mark Sequences: The possible courses to be sailed, including the order in which the marks are to be passed, and the side on which each mark is to be left, are shown in the diagrams in Attachment 1.

9.2. Attachment 2 shows the approximate location of the marks for the around the islands race(s).

9.3. The course to be sailed and the approximate compass direction to Mark #1 will be displayed from the stern of the Race Committee Signal Boat, using placards or flags, not later than the preparatory signal. This changes RRS rule 27.1.

9.4. For the I-LYA around the islands race (course 1-8) Mark #1 will be set ½ mile to windward of the start line and is to be rounded either to port or starboard depending on the course to the next mark. If Mark #1 is to be rounded to STARBOARD, a GREEN flag will be displayed from the starboard stern of the signal boat. If Mark#1 is to be rounded to PORT, a RED flag will be displayed from the starboard stern of the signal boat.

10. MARKS

10.1. The Start and Finish marks will be Yellow inflatables. Mark #1 will be an Orange inflatable.

11. START

11.1. Races will be started using RRS 26.

11.2. The starting line will be between the staff supporting an ORANGE FLAG on the Race Committee Signal Boat and a Yellow Inflatable at the port end.

11.3 Cruising Class shall start after Jam Class and have a 5 minute window in which to start (cross start line) and have their actual start time recorded as the time of day they cross the start line. Any Cruising class boat starting more than 5 minutes after the start signal will be given as the start time plus 5 minutes. Boats in the Cruising Class starting later than 15 minutes after the start signal will be scored DNS without a hearing. This changes RRS rules 35, 63.1, A4, and A5.

12. RECALLS

12.1. Individual and general recalls will be signaled according to RRS 29.1 and 29.2. The RC will attempt to hail boats over early on the VHF channel designated for their racing area. However, it is each competitor's responsibility to start properly.

12.2. The following are NOT grounds for redress: failure of the RC to hail any or all boats OCS (on course side), failure of the committee to hail one or more boats, failure of a boat to hear its hail, timeliness of the hail, or the order of the boats within the hails.

14. SHORTENING THE COURSE

14.1. Shortening the course will be by RRS 32. If the RC boat flying code flag "S" displays a class flag or flags, the course is shortened only for that class (those classes).

15. FINISH

15.1 The Finishing Line will be between the staff displaying an Orange Flag on the RC boat and a Finish Mark which shall be a YELLOW Inflatable.

15.2 If the race committee is absent when a boat finishes, she should report her finishing time, and her position in relation to nearby boats, to the race committee at the first reasonable opportunity.

16. PENALTY SYSTEM

16.1 For JAM, and CRUISING CLASS RRS 44.1 is changed so that the Two-Turns Penalty is replaced by the One-Turn Penalty. After getting well clear of other boats as soon after the incident as possible, a boat takes a One-Turn Penalty by promptly making the turn in one direction including one tack and one gybe.

17. TIME LIMITS

17.1. The Time Limit is five (5) hours for the around islands race. Any boat not finished within the time limit will be scored TLE (Time Limit Expired) without a hearing. This changes RRS 35 and 63.1, A4, and A5..

17.2 A boat finishing more than 90 minutes after the first finisher in its class will be scored TLE without a hearing. This changes RRS 35, 63.1, A4, and A5.

18. PROTESTS AND REQUESTS FOR REDRESS

18.1 Protest forms are available at race office at PIBYC, and protests shall be delivered there during the Protest Time limit as defined in Sailing Instruction 18.3.

18.2 For all classes, the Protest Time limit is sixty (60) minutes after the RC Signal Boat docks.

18.3. Notices will be posted no later than thirty (30) minutes after the protest time limit expires to inform competitors, they are parties or witnesses. Hearings will be held in the Put-In-Bay Yacht Club beginning at the time posted in the notice. This posting constitutes the notice required by RRS 63.2 (Time and Place of the Hearing).

- 18.4. On the last scheduled day of racing a request for reopening a hearing shall be delivered:
- (a) within the protest time limit if the requesting party was informed of the decision the previous day, or
 - (b) no later than 30 minutes after the requesting party was informed of the decision that day. This changes RRS 66.
- 18.5. On the last scheduled day of racing a request for redress based on a Protest Committee decision shall be delivered no later than 30 minutes after the decision was posted. This changes RRS 62.2.
- 18.6. Alleged breaches of Sailing Instruction 1.3 and 2.7 shall not be grounds for protest or redress by a competitor. Penalties for breaches of these rules may, at the discretion of the Protest Committee, be less than disqualification in which case they will be scored as “discretionary penalty imposed” (DP). This changes RRS 60.1(a) and A 11.

19. SCORING

- 19.1. One race constitutes a series.
- 19.2. Boats scored TLE shall be scored points for the finishing place one more than the number of boats who sailed the course and finished the race.
- 19.3. A boat’s series score shall be the total of her race scores. No scores will be excluded. This changes RRS A2.

20. SAFETY

- 20.1. A boat that retires shall notify the RC signal boat or the Race Office ashore at (419) 656-0807 as soon as possible in any practical manner (e.g. hail, VHF radio, cellular phone, etc.).
- 20.2. On the water, a boat can be instructed by a member of the RC to proceed immediately to a designated area for inspection. Ashore, equipment may be inspected at any time for compliance with Class Rules, Notice of Race, or Sailing Instructions.

21. AWARDS

- 21.1. Awards will be given to the first three places in each class.
- 21.2. Daily first prizes will be given to the first place finisher in the first race for each class.
- 21.3. Other prizes may be awarded at the discretion of the Organizing Authority and/or individual classes.

22 RADIO COMMUNICATION

- 22.1. Except in an emergency and as permitted under Instruction 20.1, a boat, while racing, shall neither make nor receive radio communications not available to all boats. This restriction applies also to mobile telephones or other portable devices.
- 22.2. Course specific VHF frequencies which will be used by the RC will be posted on the official notice board.
- 22.3. Race Committee communications, which may be overheard by competitors, shall not be grounds for redress.

23. DISCLAIMER OF RESPONSIBILITY

- 23.1. Sailing is an activity that has inherent risk of damage and injury. Competitors in this event are participating entirely at their own risk. See RRS 4: “DECISION TO RACE.” The Race Organizers (Organizing Authority, Race Committee, Protest Committee, host club, sponsors or any other organization or official) will not be responsible for damage to any boat or other property; or injury to any competitor, including death, sustained as a result of participation in this event. By participating in this event, each competitor agrees to release the race organizers from any and all liability associated with such competitor’s participation in this event to the fullest extent permitted by law.

PHRF & Jam-Cruising Attachment 1 2023 Bay Week Around the Islands Course Mark Descriptions

GPS Co-ordinates from 2023 Lake Erie Light List. Provided for reference only. Minor variation of actual GPS locations shall not be grounds for redress.

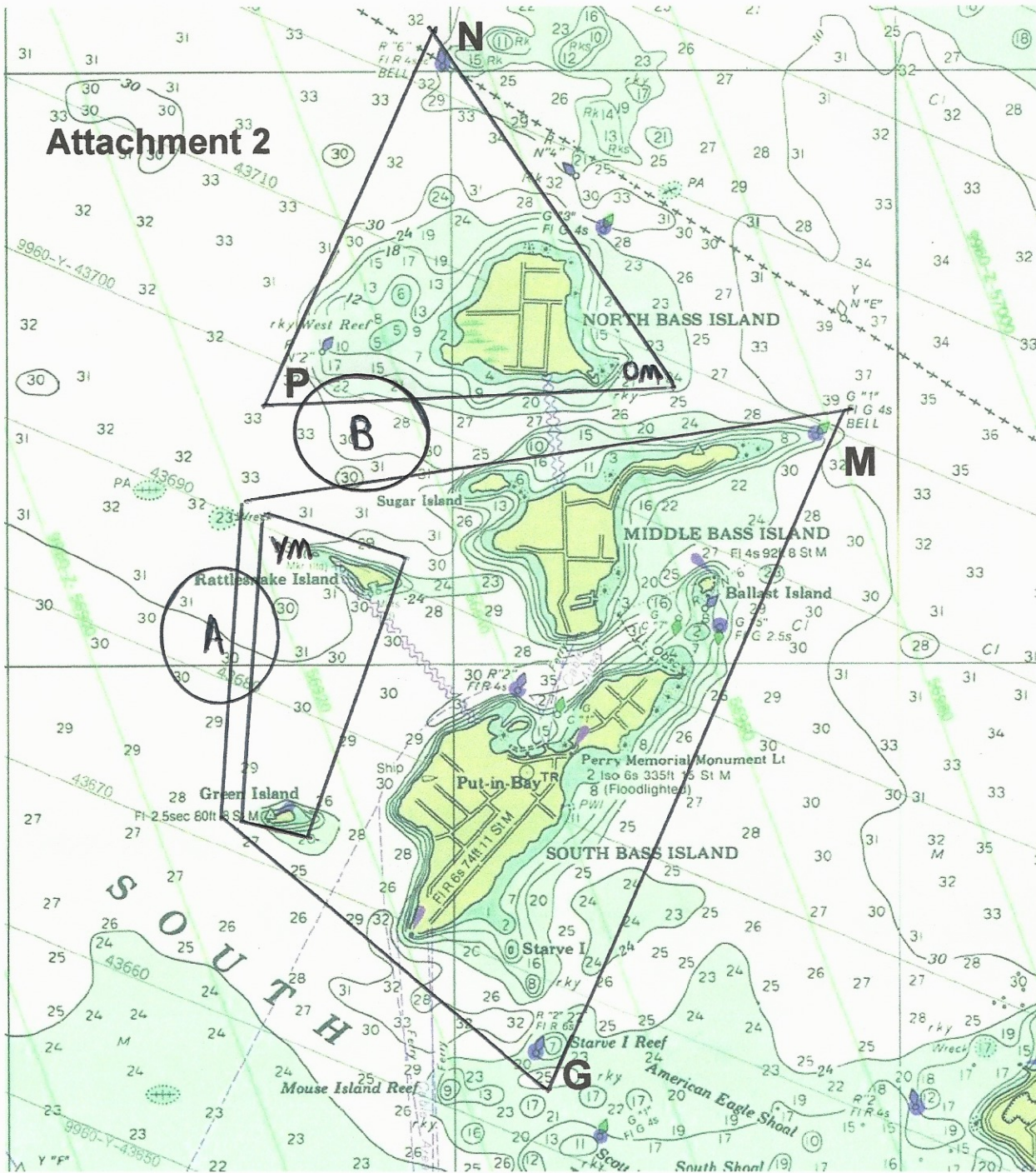
Designation Start/Finish Line	Description	Location (Approx.)
	Area A : PHRF Start Area Area B: Jam/ Cruising Start Area	SW of Rattlesnake Island North of Rattlesnake Island
G	Starve Island Reef Light R2	41°36 .415 N 082°49 .023 W
M	Middle Bass Island East Shoal G1	41°41 .545 N 082°45 .540 W
N	North Bass Island R6	41°45 .019 N 082°50 .052 W
P	North Bass Island Shoal R2	41°42 .368 N 082°51 .279 W
OM – Mark set NBSE	Orange Mark Off Southeast corner of North Bass	41 42' .412 N 082 48' .069 W Approx
YM - Mark Set West of the rattles	Yellow Mark 0.2 nautical miles west of the Rattles	41°40 .982 N 082°51 .828 W Approx
Rattlesnake Island		41° .40' .448 N 082° 50' .575 W
Green Island		41°38' .421 N 082°52 .042 W

For Courses 0 -- 9 the course # to be sailed and the approximate compass direction to Mark#1 will be displayed from the of the signal boat. Mark #1 will be set 1/2 mile to windward of the start line and is to be rounded either to port or to starboard depending on the course to the next mark. If Mark#1 is to be rounded to STARBOARD, a GREEN flag will be flying from the starboard stern of the signal boat. If Mark#1 is to be rounded PORT, a RED flag will be flying from the of the signal boat.

- COURSE # 0** Start – Mark#1– P(s) – N(s) –OM(s) –[YM(p)PHRF only] --Finish
COURSE # 1 Start – Mark#1- [YM(s)PHRF only] -- OM(p) -- N(p) -- P(p)- Finish
COURSE # 2 JAM Start – Mark#1--YM(p) – Green Is(p) – G(p) – M(p) -- Finish
COURSE # 3 JAM Start – Mark#1-- M(s) -- G(s) – Green Is(s) – YM(s) --Finish
COURSE # 4 PHRF Start – Mark#1--Green Is(p) – G(p) – M(p) YM(p) -- Finish
COURSE # 5 PHRF Start – Mark#1--YM(s) – M(s) – G(s) – Green Is(s) -- Finish
COURSE # 6 JAM Start –Mark#1--YM(p)--Green Is(p)--Rattlesnake Is(p)--Finish
COURSE # 7 JAM Start – Mark#1-- Rattlesnake Is(s)–Green Is(s)– YM(s)-Finish
COURSE # 8 PHRF Start –Mark#1--Green Is(p)-Rattlesnake Is(p)--YM(p)--Finish
COURSE # 9 PHRF Start--Mark#1--YM(s)--Rattlesnake Is(s)--Green Is(s)--Finish

Attachment 2

2018 ILYA Bayweek Around the Islands Course Chart



Three possible Around the Islands Courses— Six options--Short , Medium, Long – Either Direction

A Approximate PHRF Starting area

B Approximate JAM/Crus Starting Area