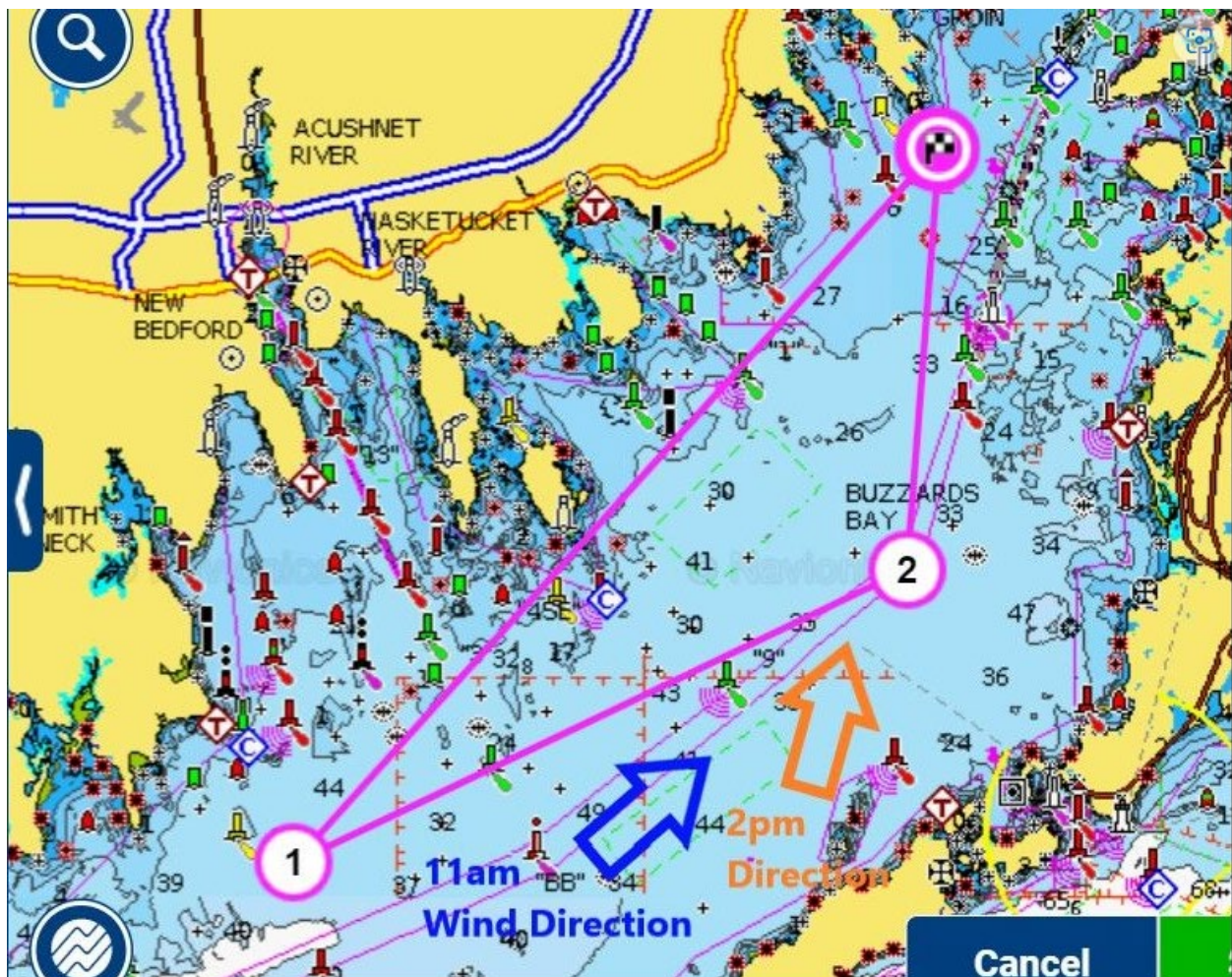


Long Distance Courses - All Classes & One Start



COURSE A – 28.1nm

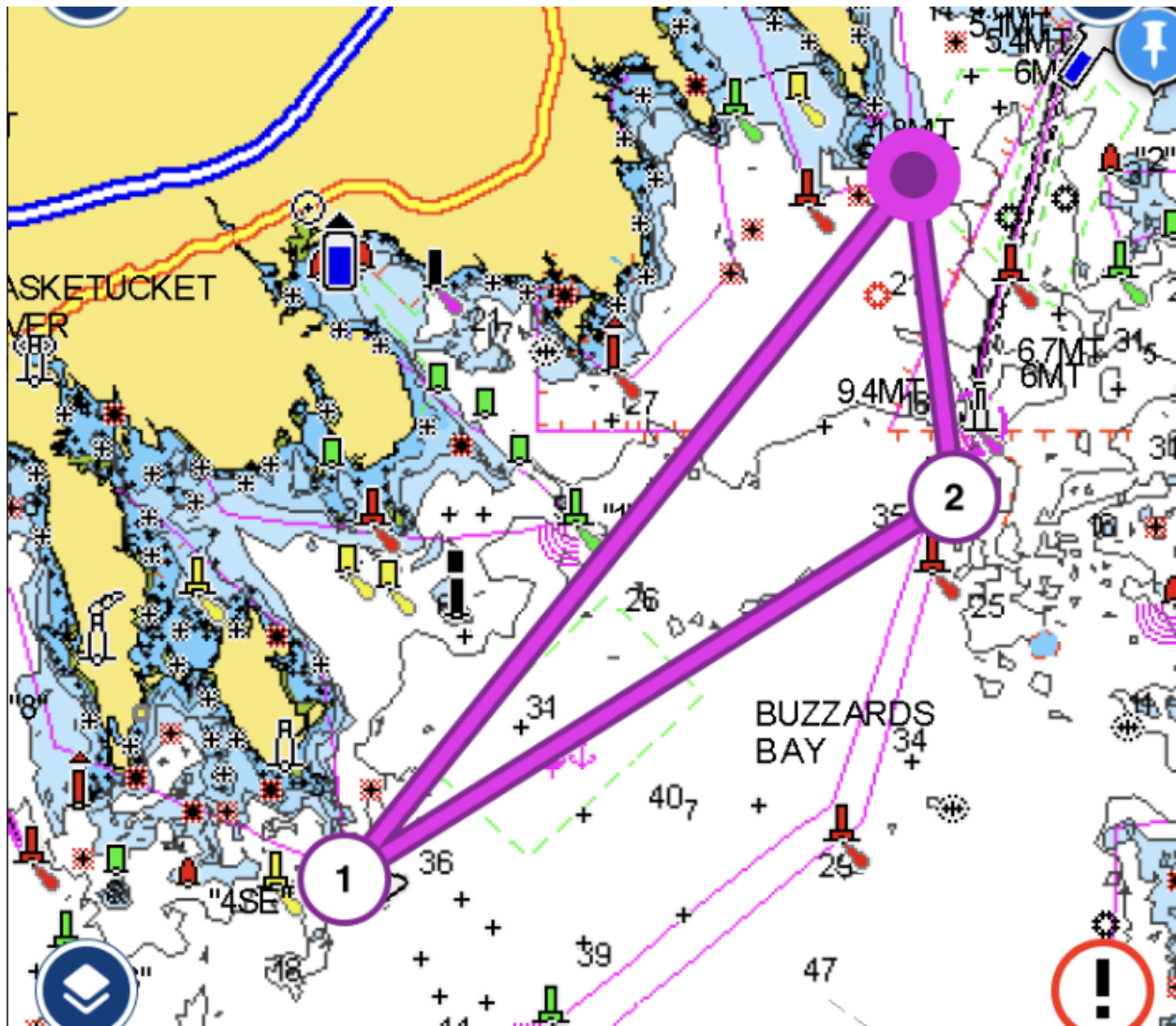
- Starting and Finishing area near Bird Island Bell Buoy #3
- Buzzards Bay Lighted Bell Buoy #7 off Wilkes Ledge - leave to port
- Buzzards Bay Lighted Gong Buoy #10 approx. 3.6nm South of Cleveland Light – leave to port
- Finish Down Wind in vicinity of start area near Bird Island Bell Buoy #3



Wind direction is only provided as an estimate for reference and not to be relied upon

COURSE B – 16.4nm

- Starting and Finishing area near Bird Island Bell Buoy #3
- New Bedford Southeast Approach Bell Buoy 2SE – Leave to port
- Cleveland Ledge Channel Lighted Buoy #4 – leave to port
- Finish Down Wind in vicinity of start area near Bird Island Bell Buoy #3



COURSE C – 12.6nm

- Starting and Finishing area near Bird Island Bell Buoy #3
- Brant Island Cove Channel Lighted Buoy #2 – Leave to port
- Cleveland Ledge Lighthouse – leave to port
- Finish Down Wind in vicinity of start area near Bird Island Bell Buoy #3

