

Columbia – Halyard Hustle

Organizing Authority - Columbia Yacht Club (COLYC)

July 9th, 2023

Chicago, Illinois (USA)

SAILING INSTRUCTIONS (SIs)

The notation '[NP]' in a rule means that a boat may not protest another boat for breaking that rule. This changes RRS 60.1(a). The notation '[DP]' in a rule means the penalty for a breach of the rule may, at the discretion of the protest committee, be less than disqualification.

1. RULES

- 1.1. These races will be governed by the rules as defined in The 2021-2024 Racing Rules of Sailing ("RRS").
- 1.2. U.S. Sailing prescriptions will apply, except for the prescriptions to RRS 63.2.
- 1.3. For double handed races; power-driven winches are permitted and boats shall have a functional auto-pilot installed and ready for use while racing. These auto-pilots may be mechanical (wind vane) or electrically operated. Wheel and tiller locks do not meet this rule. This changes RRS 52.
- 1.4. [NP][DP] All competitors shall follow federal, state, local and OA rules and regulations regarding health and safety.

2. CHANGES TO SAILING INSTRUCTIONS

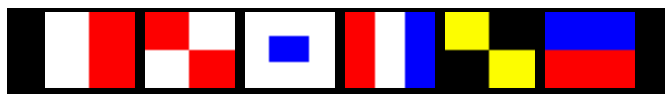
- 2.1. Any changes to the sailing instructions will be posted before 0900 on the day it will take effect, except that any change to the schedule of races will be posted by 2000 on the day before it will take effect.
- 2.2. Changes to a sailing instruction may be made on the water by the race committee (RC) before the warning signal for each race by flying code flag "L" and communication by VHF radio.

3. COMMUNICATIONS WITH COMPETITORS

- 3.1. Notices to competitors will be posted on the official notice board located at event's Yachtscore.com page and a courtesy notification may be sent via e-mail and/or text to all entered competitors.
- 3.2. On the water, the RC intends to monitor and communicate with competitors via VHF radio on channel **78**. The RC may provide courtesy broadcasts during the race.
- 3.3. Failure to receive courtesy emails, text messages, or VHF broadcasts are not grounds for redress. This changes RRS 62.1.
- 3.4. [DP] Except in an emergency, a boat that is racing shall not make voice or data transmissions and shall not receive voice or data communication that is not available to all boats.

4. SIGNALS MADE ASHORE

- 4.1. Signals made ashore will be displayed from the Organizing Authority's clubhouse.
- 4.2. When flag AP is displayed ashore, '1 minute' is replaced with 'not less than 75 minutes' in Race Signals AP.
- 4.3. Information provided via code flags may also be sent via email and text message to skippers of all entered yachts.



Columbia – Halyard Hustle

5. SCHEDULE OF RACES

5.1 The scheduled time of the warning signal for the event is 1100 (CDT). All sections shall have one race.


6. CLASS FLAGS

The class flags are:

CASUAL RACERS

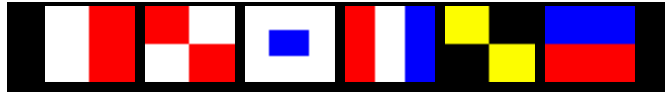
Class	Flag	Warning	Start	Ratings Band
Casual - Non-Spinnaker	D 			MWPHRF >99 to xxx
Casual - Spinnaker	V 			MWPHRF >99 to xxx

PERFORMANCE RACERS

Class	Flag	Warning	Start	Ratings Band
T-10	0 (zero) 			One Design
Double-Handed	Q 			All
MWPHRF 5	5 			MWPHRF >xx to 160
MORF Lady Skipper	8 			All
J105	J 			One Design
J88	K 			One Design
Beneteau 36.7	6 			One Design
J109	9 			One Design
MWPHRF 4	4 			<i>pending</i>
MWPHRF 3	3 			<i>pending</i>
Beneteau 40.7	7 			One Design
J111	E 			One Design
ORC 2	2 			<i>pending</i>
ORC 1	1 			<i>pending</i>

7. RACING AREAS

7.1 The starting area for the race will be N 41 51.17 W 87 33.41. Chicago Beer Can Series Center Mark, SA7.



Columbia – Halyard Hustle

8. COURSES AND MARKS

Courses will be provided in Appendix A.

9. CHECK-IN/CHECK-OUT

- 9.1. When arriving at the starting area, boats shall approach the Race Committee signal boat, hail their sail number, and receive acknowledgement from the RC.
- 9.2. If a boat withdraws from the race, it shall notify the RC via VHF. If it does not receive a confirmation from the Race Committee of their withdrawal it shall also send an email, at the first reasonable opportunity, stating their withdrawal to HalyardHustle@gmail.com.

10. THE START

- 10.1. Races will be started using RRS 26 with the warning signal made five minutes before the starting signal. The Race Committee signal boat (RC) may set a guard mark off the stern of the signal boat. In such a case, boats shall not sail between the signal boat and the guard mark.
- 10.2. The starting line is between a staff displaying an orange flag on the RC signal boat at the starboard end and the course side of the port-end starting mark.
- 10.3. During the starting sequence, the RC will fly the appropriate class flag, as set forth in the class flag chart. Boats shall fly the appropriate class flag on their backstay, or stern pulpit if no backstay.
- 10.4. [DP] Boats whose warning signal has not been made shall avoid the starting area during the starting sequence for other races.
- 10.5. Individual recalls will be signaled in accordance with RRS 29.1. The RC Committee may attempt to hail OCS boats by sail number via VHF. Failure to make or hear such hails is not grounds for redress. This changes RRS 62.1(a).
- 10.6. A boat that does not start within 5 minutes after her starting signal will be scored Did Not Start (DNS) without a hearing. This changes RRS A5.1 and A5.2.

11. CHANGE OF THE NEXT LEG OF THE COURSE

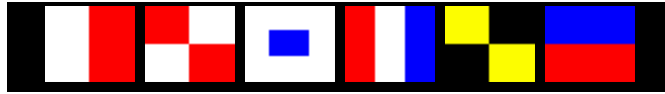
- 11.1. While boats are *racing*, the RC may change one or more legs of the course that begins at a rounding *mark* by changing the position of the next *marks* (or the finishing line) and signaling all boats in that race class before they begin the leg. The direction of the leg(s) will be changed by the RC displaying the flag C with repetitive sounds and communication by VHF radio of new compass bearing(s). This changes RRS 33.
- 11.2. If approved by the RC, boat relay of communication will be allowed.

12. THE FINISH

- 12.1. The finishing line is between a staff displaying a blue flag on the Race Committee signal boat and the course side of the finishing mark, which may be either port or starboard.
- 12.2. If the Race Committee signal boat is absent when a boat finishes, or an alternate finish line as described in an amendment to these Sailing Instructions, the boat should finish at the finishing mark or alternate finish line, record her finishing time (per its GPS) and communicate to the Race Committee via VHF.

13. PENALTY SYSTEM

- 13.1. RRS 44.3 shall apply, modified as follows: “The corrected finish of a boat that accepts a penalty under RRS 44.3 shall be 20% of the number of boats started in that class, taken to the



Columbia – Halyard Hustle

higher whole number, but such penalty shall place a yacht no worse than last in her class. Her adjusted place, for determining her placement in her division, shall be one second greater than the time of the boat placing just before her in her division. This changes RRS A.4.1 and A5.

- 13.2. A boat successfully protested by the Race Committee for failing to properly display her class flag as required, shall be penalized one place in her class. Her corrected time shall be the next boat to finish in her class, plus one second. This changes RRS A4.1 and A5.

14. TIME LIMITS

- 14.1. The time limit for the race will be 1700 hours. Boats that do not finish by the time limit shall be scored DNF by the RC without a hearing. This Modifies Appendix A5.

15. HEARING REQUESTS

- 15.1. A boat intending to protest or seek redress shall provide notification to the Race Committee (RC) of the sail number(s) of the boat(s) being protested immediately after finishing and shall receive specific acknowledgement.
- 15.2. The protest time limit will be 60 minutes after the race committee signal boat docks. The protest desk and hearing location will be at Columbia Yacht Club.
- 15.3. Hearing request forms must be completed by the time limit and are available at the protest desk or filed online in the Owner's Corner of YachtScoring (a diagram may be brought to the hearing).
- 15.4. Notices of hearings will be posted on the Official Notice Board (ONB) no later than 30 minutes after the protest time limit to inform competitors of hearings in which they are parties or named as witnesses. Hearings will be scheduled as soon as practical on the race day.
- 15.5. Violations of Section 4 of the Notice of Races are protestable only by the Race Committee.

16. SCORING

- 16.1. ORC classes shall be scored Time-on-Time (TOT) using the All Purpose single scoring number. MWPHRF classes shall be scored Time-on-Time (TOT) using formula: $HCP\ rating = 650 / (550 + MWPHRF\ HCP\ rating)$.

17. PRIZES

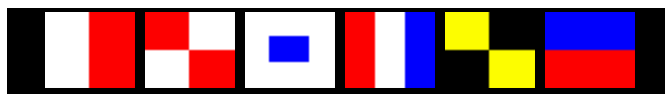
- 17.1. Prizes will be awarded as described in the Notice of Races. The Organizing Authority will provide information about award ceremonies via e-mail and/or text to all competitors.

18. DISCLAIMER OF LIABILITY

- 18.1. Competitors release all claims they may have against Columbia Yacht Club and its officers, directors, members, committees, volunteers and employees for damage to property, personal injury or death sustained in conjunction with or prior to, during or after the regatta.

19. FURTHER INFORMATION

Please direct any questions to the Regatta Chair: Jane Hoswell, HalyardHustle@gmail.com, voice message 312-246-1999. Organizing Authority: Columbia Yacht Club, 111 N. Lake Shore Drive Chicago, IL 60601.



Columbia – Halyard Hustle

Appendix A – COURSE INFORMATION

8.1 COURSES AND MARKS

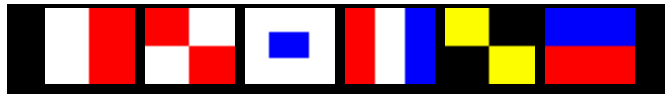
The Race Committee (RC) shall select a course for each section from the below list. There are 12 possible Performance courses and 8 Casual courses. The courses will be displayed on the official course board on the RC boat prior to the first warning signal. A courtesy announcement may be made over VHF.

8.2 COURSE LATITUDE/LONGITUDE, BEARING AND DISTANCE

The course Latitude / Longitude, bearing and distance in the below charts are approximate and are not grounds for redress.

MARK LIST

Course Marks	Approximate Latitude/Longitude		General Description
STARTING AREA (SA7)	41 51.17 N	87 33.41 W	White cylinder, Center Mark
Beer Can 1	41 52.26 N	87 33.41 W	White cylinder, with # 1
Beer Can 2	41 51.94 N	87 32.37 W	White cylinder, with # 2
Beer Can 3	41 51.17 N	87 31.95 W	White cylinder, with # 3
Beer Can 4	41 50.40 N	87 32.37 W	White cylinder, with # 4
Beer Can 5	41 50.08 N	87 33.41 W	White cylinder, with # 5
Beer Can 6	41 50.40 N	87 34.44 W	White cylinder, with # 6
Beer Can 7	41 51.17 N	87 34.87 W	White cylinder, with # 7
Beer Can 8	41 51.94 N	87 34.44 W	White cylinder, with # 8
Clemson Shoal Bell Buoy 4	41 48.41 N	87 32.08 W	Red Bell Buoy
Hustle Drop Mark	41 51.20 N	87 30.10 W	Inflatable Tetrahedron
FINISH AREA (SA7)	41 51.17 N	87 33.41 W	White cylinder, Center Mark

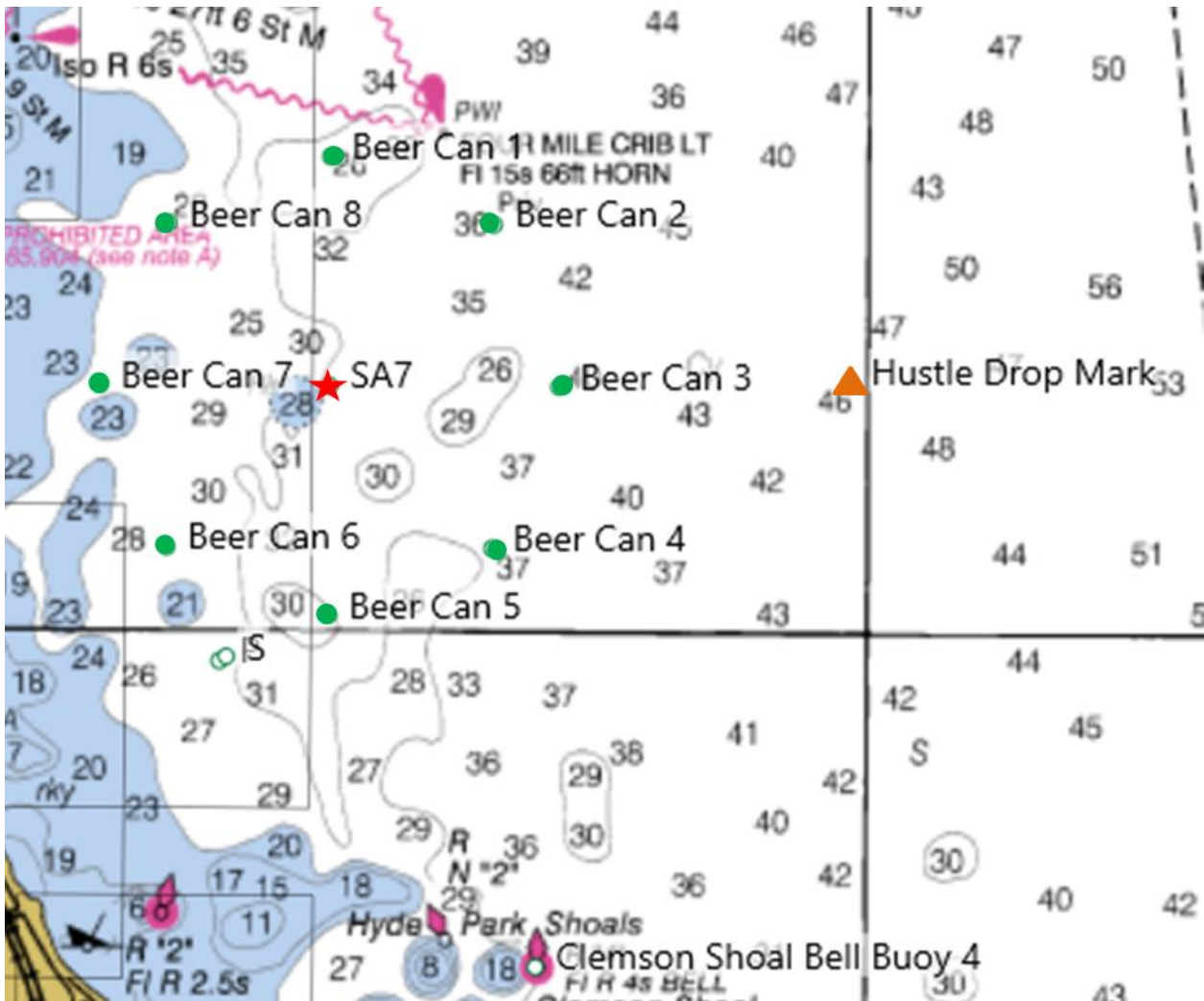


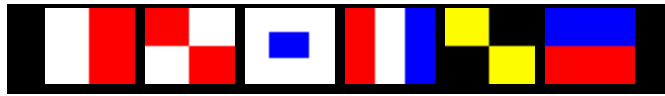
Columbia – Halyard Hustle

Mark Locations and Course Area (approximate)

Use this map to draw your course.

Suggestion, print more than one copy to have on your boat.





Columbia – Halyard Hustle

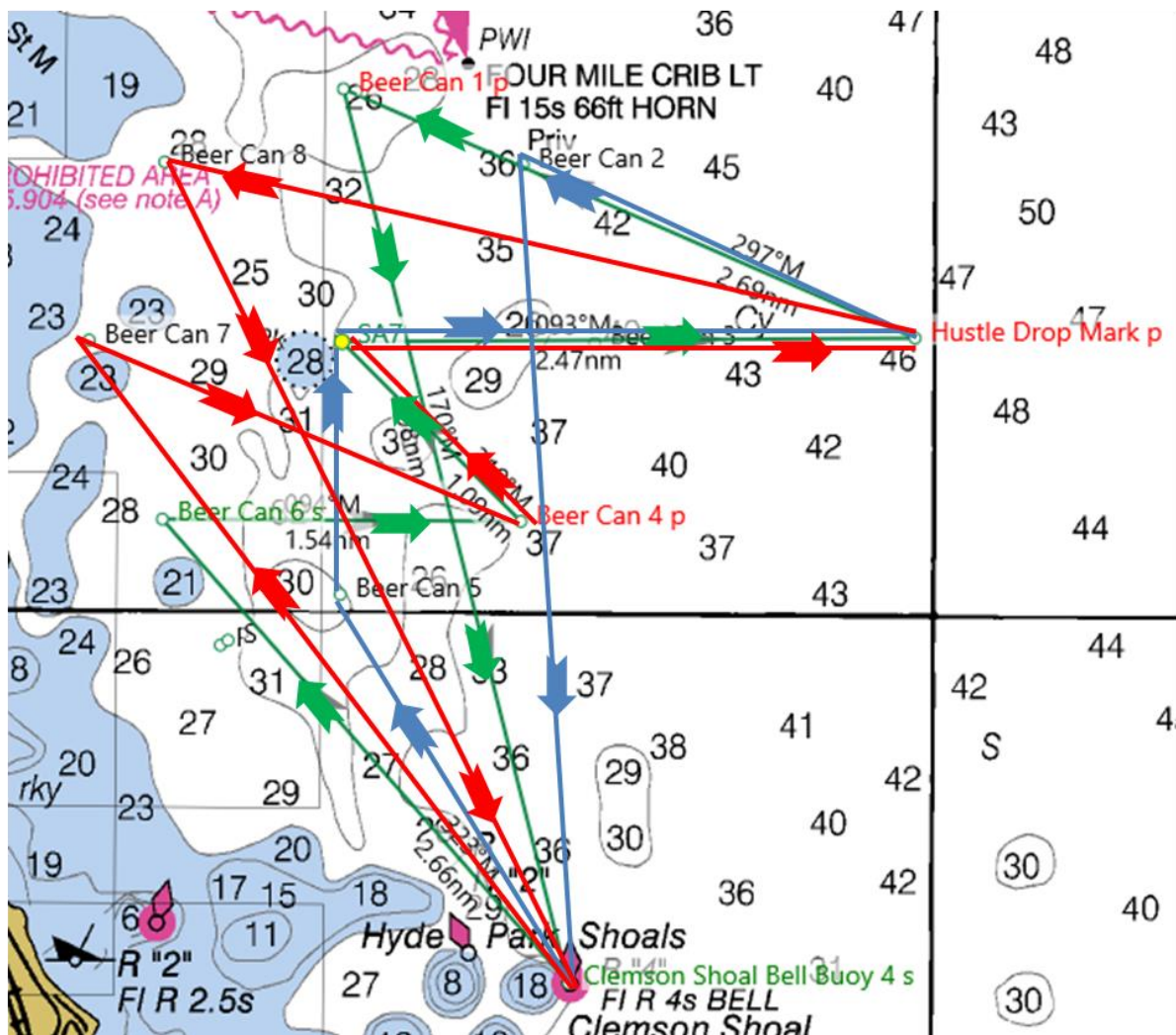
Example #1: multi-course configuration

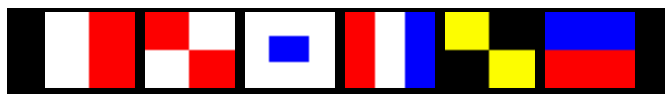
Possible courses selected if the wind direction is E or SE, with wind velocity of 9-14 knots.

Course D – in **RED**: J111, ORC 2, ORC 1

Course E – in **GREEN**: J105, J88, Bene 36.7, J109, PHRF 4 & 3, Bene 40.7

Course F - in **BLUE**: T10, Double-handed, PHRF 5





Columbia – Halyard Hustle

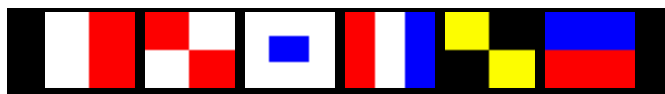
PERFORMANCE RACERS - COURSE LIST

Wind Direction may be: N, NE

COURSE A - Alpha Marks	Mark Rounding	Approx. Bearing	Approx. Distance	Comment
SA7 - Start				
Beer Can 1	Port	0	1.09	
Beer Can 6	Port	202	2.02	
Clemson Shoal Bell Buoy 4	Port	139	2.66	Avoid Hyde park shoal
Beer Can 3	Starboard	2	2.77	
Hustle Drop Mark	Starboard	89	1.38	Inflatable Tetrahedron
Clemson Shoal Bell Buoy 4	Starboard	208	3.16	Avoid Hyde park shoal
SA7 - Finish		340	2.94	
				16.02

COURSE B - Bravo Marks	Mark Rounding	Approx. Bearing	Approx. Distance	Comment
SA7 - Start				
Beer Can 1	Port	0	1.09	
Beer Can 6	Port	202	2.02	
Beer Can 3	Starboard	67	2.01	
Hustle Drop Mark	Starboard	89	1.38	Inflatable Tetrahedron
Clemson Shoal Bell Buoy 4	Starboard	208	3.16	Avoid Hyde park shoal
SA7 - Finish		340	2.94	
				12.60

COURSE C - Charlie Marks	Mark Rounding	Approx. Bearing	Approx. Distance	Comment
SA7 - Start				
Beer Can 1	Port	0	1.09	
Beer Can 6	Port	202	2.02	
Beer Can 3	Starboard	67	2.01	
Hustle Drop Mark	Starboard	89	1.38	Inflatable Tetrahedron
Beer Can 5	Starboard	246	2.71	
SA7 - Finish		0	1.09	
				10.30



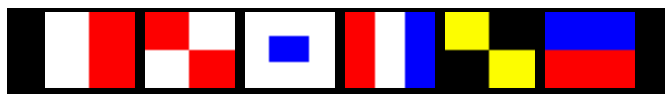
Columbia – Halyard Hustle

Wind Direction may be: E, SE

COURSE D - Delta Marks	Mark Rounding	Approx. Bearing	Approx. Distance	Comment
SA7 - Start				
Hustle Drop Mark	Port	89	2.47	Inflatable Tetrahedron
Beer Can 8	Port	283	3.32	
Clemson Shoal Bell Buoy 4	Starboard	154	3.95	Avoid Hyde park shoal
Beer Can 7	Starboard	323	3.46	
Beer Can 4	Port	112	2.02	
SA7 - Finish		315	1.09	
			16.31	

COURSE E - Echo Marks	Mark Rounding	Approx. Bearing	Approx. Distance	Comment
SA7 - Start				
Hustle Drop Mark	Port	89	2.47	Inflatable Tetrahedron
Beer Can 1	Port	293	2.69	
Clemson Shoal Bell Buoy 4	Starboard	166	3.98	Avoid Hyde park shoal
Beer Can 6	Starboard	319	2.66	
Beer Can 4	Port	90	1.54	
SA7 - Finish		315	1.09	
			14.43	

COURSE F - Foxtrot Marks	Mark Rounding	Approx. Bearing	Approx. Distance	Comment
SA7 - Start				
Hustle Drop Mark	Port	89	2.47	Inflatable Tetrahedron
Beer Can 2	Port	294	1.85	
Clemson Shoal Bell Buoy 4	Starboard	176	3.54	Avoid Hyde park shoal
Beer Can 5	Starboard	329	1.95	
SA7 - Finish		0	1.09	
			10.90	



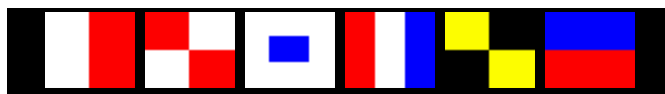
Columbia – Halyard Hustle

Wind Direction may be: SE, S, SW

COURSE G - Golf Marks	Mark Rounding	Approx. Bearing	Approx. Distance	Comment
SA7 - Start				
Clemson Shoal Bell Buoy 4	Port	160	2.94	Avoid Hyde park shoal
Hustle Drop Mark	Port	28	3.16	Inflatable Tetrahedron
Beer Can 3	Port	269	1.38	
Clemson Shoal Bell Buoy 4	Starboard	182	2.77	Avoid Hyde park shoal
Beer Can 6	Starboard	319	2.66	
Beer Can 1	Starboard	22	2.02	
SA7 - Finish		180	1.09	
			16.02	

COURSE H - Hotel Marks	Mark Rounding	Approx. Bearing	Approx. Distance	Comment
SA7 - Start				
Clemson Shoal Bell Buoy 4	Port	160	2.94	Avoid Hyde park shoal
Hustle Drop Mark	Port	28	3.16	Inflatable Tetrahedron
Beer Can 3	Port	269	1.38	
Beer Can 6	Starboard	247	2.01	
Beer Can 1	Starboard	22	2.02	
SA7 - Finish		180	1.09	
			12.60	

COURSE I - India Marks	Mark Rounding	Approx. Bearing	Approx. Distance	Comment
SA7 - Start				
Beer Can 5	Port	180	1.09	
Hustle Drop Mark	Port	66	2.71	Inflatable Tetrahedron
Beer Can 3	Port	269	1.38	
Beer Can 6	Starboard	247	2.01	
Beer Can 1	Starboard	22	2.02	
SA7 - Finish		180	1.09	
			10.30	



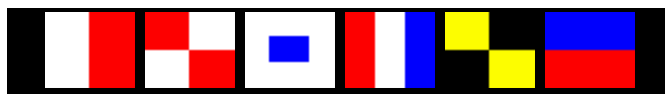
Columbia – Halyard Hustle

Wind Direction may be: W, NW

COURSE J - Juliet Marks	Mark Rounding	Approx. Bearing	Approx. Distance	Comment
SA7 - Start				
Beer Can 7	Port	274	1.09	
Clemson Shoal Bell Buoy 4	Port	147	3.46	Avoid Hyde park shoal
Beer Can 1	Starboard	350	3.98	
Hustle Drop Mark	Starboard	117	2.69	Inflatable Tetrahedron
Beer Can 6	Starboard	260	3.34	
SA7 - Finish		49	1.09	
			15.65	

COURSE K - Kilo Marks	Mark Rounding	Approx. Bearing	Approx. Distance	Comment
SA7 - Start				
Beer Can 7	Port	274	1.09	
Clemson Shoal Bell Buoy 4	Port	147	3.46	Avoid Hyde park shoal
Beer Can 2	Starboard	1	3.54	
Hustle Drop Mark	Starboard	118	1.85	Inflatable Tetrahedron
Beer Can 6	Starboard	260	3.34	
SA7 - Finish		49	1.09	
			14.37	

COURSE L - Lima Marks	Mark Rounding	Approx. Bearing	Approx. Distance	Comment
SA7 - Start				
Beer Can 7	Port	274	1.09	
Beer Can 4	Port	117	2.02	
Beer Can 2	Starboard	4	1.54	
Hustle Drop Mark	Starboard	118	1.85	Inflatable Tetrahedron
Beer Can 6	Starboard	260	3.34	
SA7 - Finish		49	1.09	
			10.93	



Columbia – Halyard Hustle

CASUAL RACERS - LONG COURSE LIST

COURSE M - Mike Marks	Mark Rounding	Approx. Bearing	Approx. Distance	Comment
SA7 - Start				Center Pin
Beer Can 8	Port	315	1.09	
Beer Can 6	Port	180	1.54	
Beer Can 2	Starboard	45	2.18	
Beer Can 4	Starboard	180	1.54	
SA7 - Finish		315	1.09	Center Pin

7.44

COURSE N - November Marks	Mark Rounding	Approx. Bearing	Approx. Distance	Comment
SA7 - Start				Center Pin
Beer Can 2	Port	45	1.09	
Beer Can 8	Port	270	1.54	
Beer Can 4	Starboard	135	2.18	
Beer Can 6	Starboard	270	1.54	
SA7 - Finish		45	1.09	Center Pin

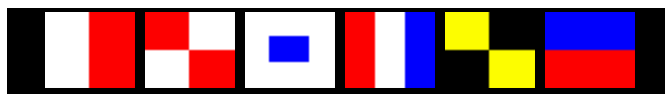
7.44

COURSE O - Oscar Marks	Mark Rounding	Approx. Bearing	Approx. Distance	Comment
SA7 - Start				Center Pin
Beer Can 6	Port	225	1.09	
Beer Can 4	Port	90	1.54	
Beer Can 8	Starboard	315	2.18	
Beer Can 2	Starboard	90	1.54	
SA7 - Finish		225	1.09	Center Pin

7.44

COURSE P - Papa Marks	Mark Rounding	Approx. Bearing	Approx. Distance	Comment
SA7 - Start				Center Pin
Beer Can 8	Starboard	315	1.09	
Beer Can 2	Starboard	90	1.54	
Beer Can 6	Port	225	2.18	
Beer Can 4	Port	90	1.54	
SA7 - Finish		315	1.09	Center Pin

7.44



Columbia – Halyard Hustle

CASUAL RACERS - **SHORT** COURSE LIST

COURSE Q - Quebec Marks	Mark Rounding	Approx. Bearing	Approx. Distance	Comment
SA7 - Start				Center Pin
Beer Can 8	Port	315	1.09	
Beer Can 6	Port	180	1.54	
Beer Can 4	Port	90	1.54	
SA7 - Finish		315	1.09	Center Pin

5.26

COURSE R - Romeo Marks	Mark Rounding	Approx. Bearing	Approx. Distance	Comment
SA7 - Start				Center Pin
Beer Can 2	Port	45	1.09	
Beer Can 8	Port	270	1.54	
Beer Can 6	Port	180	1.54	
SA7 - Finish		45	1.09	Center Pin

5.26

COURSE S - Sierra Marks	Mark Rounding	Approx. Bearing	Approx. Distance	Comment
SA7 - Start				Center Pin
Beer Can 6	Port	225	1.09	
Beer Can 4	Port	90	1.54	
Beer Can 2	Port	0	1.54	
SA7 - Finish		225	1.09	Center Pin

5.26

COURSE T - Tango Marks	Mark Rounding	Approx. Bearing	Approx. Distance	Comment
SA7 - Start				Center Pin
Beer Can 8	Starboard	315	1.09	
Beer Can 2	Starboard	90	1.54	
Beer Can 4	Starboard	180	1.54	
SA7 - Finish		315	1.09	Center Pin

5.26