



Susan Hood Trophy Race
Presented by driveHG.ca
Part of the
Ontario Sailing Offshore Keelboat IRC & PHRF
Championships

June 3 – June 4, 2016
 Lake Ontario Offshore Racing of the Port Credit Yacht Club

SAILING INSTRUCTIONS
With Amendment 1/2016-05-30

#	Section	Change
1/2016-05-30	1.7.4 1.7.5	Section change to reflect wording in NOR.

The Registration and Race Document Web Site is
www.yachtscoring.com/emenu.cfm?eID=1579

1 RULES

- 1.1 The race will be governed by the rules as defined in *The Racing Rules of Sailing*.
- 1.2 The prescriptions of Sail Canada apply for the entire race; including in US waters, see www.sailing.ca/files/SC_Prescrip_Arbit_2013_16.pdf
- 1.3 Part 2 of the *RRS* will be replaced with the Right of Way Rules of the International Regulations for Preventing Collisions at Sea as amended by Transport Canada between 2000hrs and 0600 EDT
http://laws-lois.justice.gc.ca/eng/regulations/C.R.C.,_c._1416/page-4.html
- 1.4 The Susan Hood Trophy Race is a Category 3 Event under the World Sailing Offshore Special Regulations, www.sailing.org/documents/offshorespecialregs/index.php .
The Offshore Special Regulations for Category 3 apply as amended by Sail Canada and the Lake Ontario Offshore Racing as documented in:

Lake Ontario Offshore Special Regulations for Category 3 Monohulls
Lake Ontario Offshore Special Regulations for Category 3 Multihulls

These are available at the Registration and Race Document Web Site.

- 1.5 Applicable Class Rules

Doublehanded & Fully Crewed sailboats racing in

GLMRA	GLMRA shall apply and GLMRA is the Handicap/Measurement Authority
IRC	IRC Rules 2016 Parts A, B and C shall apply and IRC is the Handicap Measurement Authority
PHRF	PHRF-LO Rules shall apply and PHRF-LO is the Handicap/Measurement Authority

Single handed sailboats racing in

PHRF	PHRF- LO Rules shall apply and PHRF-LO is the Handicap/Measurement Authority
------	--

- 1.6 The Susan Hood Trophy Race is governed by *PCYC's Visiting Yachts' Policy*, including pre-registration, available under "Additional Event Links" (click on this) on the Registration and Race Document Web Site.
- 1.7 Racing rule(s) will be changed as follows:
- 1.7.1 RRS 28.1, RRS 29.1, RRS 64.1 (a) and RRS Appendix A5
Are modified such that a sailboat that is scored OCS at her start is assessed a thirty minute penalty. A sailboat starting before her Prep may be protested by the Race Committee and the Protest Committee will apply an appropriate elapsed time penalty if the boat is found to have infringed this requirement.
- 1.7.2 RRS 41 Outside Help
"Outside Help" is modified herein to allow all forms of communication. Each sailboat may communicate with any person, competitor, sailboat or outside source of information available using any means available throughout the race.

1.7.3 RRS 42.3 Exceptions

Is extended so an engine may be used for generating electrical power provided that such use does not advance the boat's position

1.7.4 RRS 51 Movable Ballast

Is modified to allow canting keels and water ballast, assuming the applicable class/measurement/handicap rules permit them.

1.7.5 RRS 52 Manual Power

Is modified to allow the use of stored power (electricity) to be used to cant the keel or move water ballast.

All movable ballast systems must be capable of manual operation if the powered systems are inoperable

Is modified to allow the use of power auto helm devices

1.7.6 RRS 61.1 (a)

Breaches of specific Sailing Instructions, as denoted in the Sailing Instructions, will not be grounds for a protest by a sailboat

1.7.7 RRS 62.1 (a)

Is modified to allow the Race Committee the ability to announce sailboats subject to RRS 29.1. The failure to hail or order will not be grounds to request redress.

Is modified to allow the Race Committee the ability to announce a sailboat's successful completion at the finish. The failure to hail or order will not be grounds to request redress.

1.7.8 RRS 64.1

Is modified that for infringements of the rules other than Part 2, the Jury may award a lesser penalty than DSQ, unless stated otherwise in the Notice of Race or Sailing Instructions.

1.7.9 RRS A4 & A5

Is modified such that a sailboat not starting within 30 minutes of her starting signal will be scored DNS.

1.8 Class rule(s) will be changed as follows:

21.6.1 IRC

Sailboats are allowed to carry one additional spinnaker over the number listed in the sailboats' IRC certificate

22.4.2

Sailboats may choose to use the maximum crew number printed on the certificate or the crew number multiplied by 85kg as the maximum crew weight

1.9 All sailboats shall comply with Ontario Environmental Protection Act Regulations #343 as documented at

http://www.e-laws.gov.on.ca/html/regs/english/elaws_regs_900343_e.htm

Any such disqualification may be used by the Organizing Authority as whether to accept future registrations by this sailboat or owner.

- 1.10 The Person in Charge of a participating sailboat shall accurately and fully maintain the electronic crew list for the sailboat on the Race Document Web site.
- 1.11 While racing, sailboats shall not fly an ensign, a club burgee or other flags unless required or permitted by the Racing Rules of Sailing, Notice of Race, Sailing Instructions, Class Rules, and World Sailing Regulations or supplied by the Organizing Authority. See SI 16 Safety Regulations for withdrawals

2 NOTICES TO COMPETITORS

Notices to competitors will be posted on the official notice board located in the PCYC club house, to the left of the bottom of the main staircase and on the Electronic Notice Board at

http://www.yachtscoring.com/notice_board.cfm?eid=1579

3 CHANGES TO SAILING INSTRUCTIONS

Any change to the sailing instructions will be posted on the official notice board before 1700 on the day it will take effect, except that any change to the schedule of races will be posted by 2000 on the day before it will take effect.

4 SIGNALS MADE ASHORE

Signals made ashore will be displayed on the main flag pole of the Port Credit Yacht Club.

5 SCHEDULE OF RACES

- 5.1 The first warning signal is at 1945 EDT, Friday, June 3, 2016.
- 5.2 Division and fleet splits and starting sequences, including class flags, for RRS 26, shall be posted by June 1, 2016 on the Race Document Web Site and will be available at the Mandatory Participants' Meeting at 1800 EDT, June 3, 2015.

6 CLASS FLAGS

See 5.2

7 RACING AREA

The race will occur in the western end of Lake Ontario.

8 THE COURSES

	Start	
To	Burlington Weather Tower	Left to port
To	Niagara Mark	Left to port
To	PCYC Mark	Left to starboard
To	Finish	

9 MARKS

Start Area	Located approximately 0.5 NM on a bearing of 140° magnetic from the entrance to the harbour at Port
-------------------	---

	Credit Yacht Club
Burlington Weather Tower, AKA Van Wagners Beach Light	A tower with a flashing yellow light located at approximately 43° 16.22' N 079° 45.56' W.
Niagara Mark	A red buoy marked "2", with a flashing red light (4s.), located at approximately 43°19.04'N, 79°04.23'W, 3.4 NM north of the light at Fort Niagara. (<i>Niagara Bar light buoy 2</i>)
PCYC Mark	A white buoy with orange stripes, with red flag, and low intensity amber (yellow) light, lighted only overnight, approximately 190° and 0.4 NM from the PCYC Harbor entrance light approximately at 43°33.39'N 079°33.43'W. See Diagram 2, The Finish.
Finish Mark	A white buoy with orange stripes and fixed low intensity flashing amber (yellow) light, lighted only overnight, approximately 140 mag and 240 yards (0.12 NM) from the shore station approximately at 43°33.69'N 079°33.32'W. See Diagram 2, The Finish.
Race Committee Shore Station	A mast flying an orange flag, located on the headland immediately west of the entrance to the harbour at PCYC approximately at 43°33.76'N 079°33.45'W. See Diagram 2, The Finish
Distance Mark	A yellow tetrahedron, located on a bearing of 140° magnetic from the Race Committee Shore Station and approximately at 43°33.72'N 079°33.38'W. See Diagram 2, The Finish

- 9.1 Marks as listed, above, should be at the identified latitude and longitude location. In the event that a mark is not at the identified latitude and longitude location, or otherwise cannot be seen due to poor visibility, then the sailboat shall round the identified latitude and longitude location as indicated in the Sailing Instructions, and continue with the race.
- 9.2 A record shall be entered in the sailboat's log detailing the timeline and efforts made to find the mark and the time that the mark's identified latitude and longitude was deemed to have been rounded. The sailboat's GPS tracking record shall be saved and provided for evidentiary review by the Race Committee on request.

10 THE START

- 10.1 Races will be started by using RRS 26. ***There will be at least one (1) minute between a start for a class and the warning signal for a subsequent class.***
- 10.2 The starting line will be between an inflatable orange mark and the halyard carrying an orange flag on the Race Committee vessel,
- 10.3 After the first warning signal and prior to her warning signal, a sailboat shall keep clear of the starting area that extends one-quarter of the length of the starting line

ahead of and behind the starting line. It shall also extend one-quarter of the length of the starting line past either end of the starting line; see Diagram 1, The Starting Area.

- 10.4 If and only if, code flag “L”, on the Race Committee Signal Vessel, is displayed, sailboats shall sail on starboard tack close to the stern of the Race Committee Signal Boat and shall report its sail number. Check in will not be complete until the Race Committee acknowledges the sailboat. Sailboats checking in must comply with SI 10.4. Check in by VHF radio or cell phone will not be accepted.
- 10.5 A sailboat starting later than 30 minutes after her starting signal will be scored Did Not Start without a hearing. This changes rules A4 and A5. Any sailboats starting within the time limit and if the Race Committee is no longer on station, shall radio the Race Committee VHF Channel 71 Canadian when she is starting.
- 10.6 If any part of a sailboat’s hull, crew or equipment is on the course side of the starting line during the minute before her starting signal or she is subject to RRS 29.1 “Individual Recall”, the Race Committee may announce this on the VHF Channel 71 Canadian. Failure to make a broadcast or its order will not be grounds for a request for redress. This changes rule 62.1(a).

11 THE FINISH

- 11.1 The finish is between the Finish Mark and the Race Committee Shore Station.

Note: Sailboats shall not sail between the Distance Mark and the Race Committee Shore Station, and this Distance Mark shall be considered a “bounding” mark as described in Rule 31. See Diagram 2, The Finish.

- 11.2 Each sailboat shall call/hail the Race Committee Shore Station approximately 5 NM from the finish on VHF Channel 71 Canadian. Sailboats are required to maintain radio contact with the shore station throughout the finish to ensure correct identification of the finishing sailboat, until they are docked at PCYC, whether day or night. When finishing between sunset and sunrise, all sailboats shall announce their sail numbers, immediately prior to finishing, and record their finish time.

12 PENALTY SYSTEM

The Scoring Penalty, rule 44.3, will apply. The penalty will be 2 places. A sailboat taking a scoring penalty shall complete the Scoring Penalty and file it with the race committee within two hours of her finish.

13 TIME LIMITS AND TARGET TIMES

- 13.1 There is no time limit
- 13.2 See SI 16 for withdrawals.

14 PROTESTS AND REQUESTS FOR REDRESS

- 14.1 Protest forms are available at the PCYC Communications Centre located inside the front door of the clubhouse.
- 14.2 Protests shall be filed at the PCYC Communications Centre (inside the front door of the clubhouse) within two (2) hours of finishing except that if a boat’s finish time is after 1800 and before 0600 of the next day, she shall file her protest there by 0900 of that next day.
- 14.3 Notices of protests by the Race Committee or Protest Committee will be posted to inform boats under rule 61.1(b).

14.4 Breaches of instructions 1.9, 1.10, 1.11, 10.5,16, 17 and 21 will not be grounds for a protest by a boat. This changes rule 60.1(a). Penalties for these breaches may be less than disqualification if the protest committee so decides. The scoring abbreviation for a discretionary penalty imposed under this instruction will be DPI.

14.5 Hearings will take place at 1900 EDT, Thursday, June 9, 2016 at PCYC.

15 SCORING

GLMRA GLMRA Time-on-time will be used to calculate corrected time

IRC IRC Rule will be used to calculate corrected time

PHRF PHRF-LO Time-on-time will be used to calculate corrected time

16 SAFETY REGULATIONS

16.1 Sailboats are encouraged to implement their own checkin process and schedule during the race with individuals ashore via phone, email or other mechanism.

16.2 A boat withdrawing from the race shall wear her Ensign and keep clear of other competitors.

16.3 The Race Committee shall be notified of a boat's withdrawal at the earliest possible opportunity on VHF Channel 71 Canadian, at the following telephone number 1-866-462-8828 or at the email address of racecommittee@loor.ca .

16.4 Sailboats may check in with the Race Committee at any time during the race to advise Race Committee of their position at 1-866-462-8828 (follow the prompts) or the email address of racecommittee@loor.ca .

16.5 Failure of a sailboat to make every reasonable effort, under the circumstances, to comply with 16.3, may result in protest by the Race Committee. The results of this hearing may be used by the Organizing Authority whether to accept future registrations by this sailboat or owner.

16.6 All sailboats racing shall be required to maintain a log of significant events; mark rounding, calls to the Coast Guard and engine on and off for charging only

17 EQUIPMENT AND MEASUREMENT CHECKS

A sailboat may be inspected at any time during the period from the Participants' Meeting until three hours after her finish. The Race Committee may, at the finish of the race, direct a sailboat to proceed directly to a designated location at Port Credit Yacht Club. A boat which fails to follow such directions or which subsequently fails the inspection may be protested by the Race Committee.

18 COMMUNICATION

18.1 Marine VHF Channel 71 Canadian shall be used by the Race Committee for radio communication during the race.

18.2 Each sailboat shall monitor VHF Channel 71 from one hour before her warning signal until one hour after her starting signal, and from approximately one hour before finishing until 30 minutes after finishing.

- 18.3 Sailboats are encouraged to talk to other sailboats in the race on marine VHF channel 71 throughout the race, especially at 1000 and 2200 EDT. Sailboats shall monitor marine VHF channel 16 at all other times.

19 PRIZES

Prizes will be given as follows:

<u>Number of Boats Starting the Race in a Class:</u>	<u>Flags awarded for:</u>
One	First
Two	First
Three	First and Second
Four or more	First, Second and Third

The following trophies will be awarded:

C&C 34	Lou Winters Trophy
IRC I	Memorial Cup
IRC II	John Watson Trophy
IRC Overall: Best Corrected Time	J.J.Morch Rose Bowl
PHRF I	Commonwealth Trophy
PHRF II	White Hawk Trophy
PHRF III	Dave Heron Cup
PHRF IV	Snail's Pace Trophy
Overall: Best Corrected Time PHRF/IRC	Susan Hood Cup
PHRF (NFS): Best Corrected Time	George McCloy Wheel
DH FS: Best Corrected Time	Bob Bugbee Susan Hood Trophy
DH NFS: Best Corrected Time	Jim Johnstone Trophy

Trophies will be presented at the Awards Banquet on Saturday, November 12, 2016 at the Port Credit Yacht Club.

20 DISCLAIMER OF LIABILITY

Sailing is an activity that has an inherent risk of damage and injury. Competitors in this event are participating entirely at their own risk. See RRS 4, Decision to Race. The race organizers (organizing authority, race committee, protest committee, host club, sponsors, or any other organization or official) will not be responsible for damage to any boat or other property or the injury to any competitor, including death, sustained as a result of participation in this event. By participating in this event, each competitor agrees to release the race organizers from any and all liability associated with such competitor's participation in this event to the fullest extent permitted by law.

21 INSURANCE

Each participating boat shall be insured with a valid third-party liability insurance policy with a minimum cover of \$2,000,000 CAD per event for Canadian boats and an adequate level of third-party liability insurance applicable in Canadian and US waters for non-Canadian boats.

Diagram 1 The Starting Area



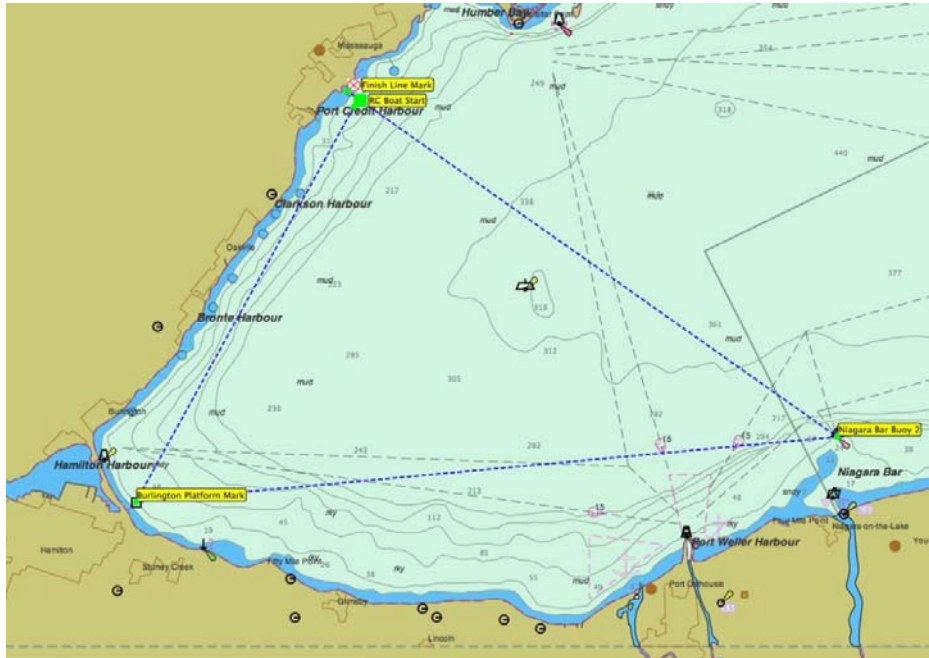
The Starting Area

After the first warning signal for a race and prior to her warning signal, a sailboat shall keep clear of the starting area that extends one-quarter of the length of the starting line ahead of and behind the starting line. It shall also extend one-quarter of the length of the starting line past either end of the starting line

Diagram 2 The Finish



Diagram 3 Course



Not be used for navigation

Contact Information

LOOR

Web site www.loor.ca
Email racecommittee@loor.ca
Phone 1-866-462-8828 (follow the prompts)

PCYC

Web site www.pyc.net
Phone 905-278-7911
FAX 905-278-2519