



2023 Gold Star Regatta

Jackson Park Yacht Club

July 8, 2023



SAILING INSTRUCTIONS (SIs) - AMENDMENT #1

1 **SCHEDULE OF RACES** - Section 7 of the Notice of Race is amended to change the time of the first warning to 1130 hours.

2 **COURSE:** The following courses may be used.

2.1 Course 1 (Short): The total distance of this course is 7.3 N. Mi.

| Mark | Approx. Location | Rounding | Approx. Course | Approx. Distance |
|--------------------------------|------------------------------|--------------|----------------|------------------|
| Start | 41° 52.80' N 87° 34.46' W | - | - | - |
| Four Mile Crib | 41° 52.36' N 87° 32.70' W | To Starboard | 107° T | 1.4 N. Mi. |
| Clemson Shoal Bell Buoy "4" | 41° 48.41' N 87° 32.08' W | To Starboard | 173° T | 4.0 N. Mi. |
| Finish | 41° 50.00' N 87° 33.50' W | - | 326° T | 1.9 N. Mi. |

2.2 Course 2 (Medium): The total distance of this course is 9.8 N. Mi.

| Mark | Approx. Location | Rounding | Approx. Course | Approx. Distance |
|------------------|------------------------------|--------------|----------------|------------------|
| Start | 41° 52.80' N 87° 34.46' W | - | - | - |
| Four Mile Crib | 41° 52.36' N 87° 32.70' W | To Starboard | 107° T | 1.4 N. Mi. |
| 68th Street Crib | 41° 47.17' N 87° 31.88' W | To Starboard | 173° T | 5.3 N. Mi. |
| Finish | 41° 50.00' N 87° 33.50' W | - | 336° T | 3.1 N. Mi. |

2.3 Course 3 (Long): The total distance of this course is 12.9 N. Mi.

| Mark | Approx. Location | Rounding | Approx. Course | Approx. Distance |
|----------------|------------------------------|--------------|----------------|------------------|
| Start | 41° 52.80' N 87° 34.46' W | - | - | - |
| Four Mile Crib | 41° 52.36' N 87° 32.70' W | To Starboard | 107° T | 1.4 N. Mi. |
| N8 Buoy | 41° 45.57' N 87° 31.74' W | To Starboard | 173° T | 6.9 N. Mi. |
| Finish | 41° 50.00' N 87° 33.50' W | - | 344° T | 4.6 N. Mi. |

3 MARKS: For the Four Mile and 68th Street cribs all guard marks for that crib are considered to be part of that mark for the course and must be left to the same side as the crib.

4 THE FINISH - Section 11.1 of the Sailing Instructions is amended to change the finish area to 41° 50.00' N, 87° 33.50' W (approximately 90° T, 2.0 NMi from entrance of 31st Street Harbor).

5 CLASS BREAKS AND STARTING TIMES

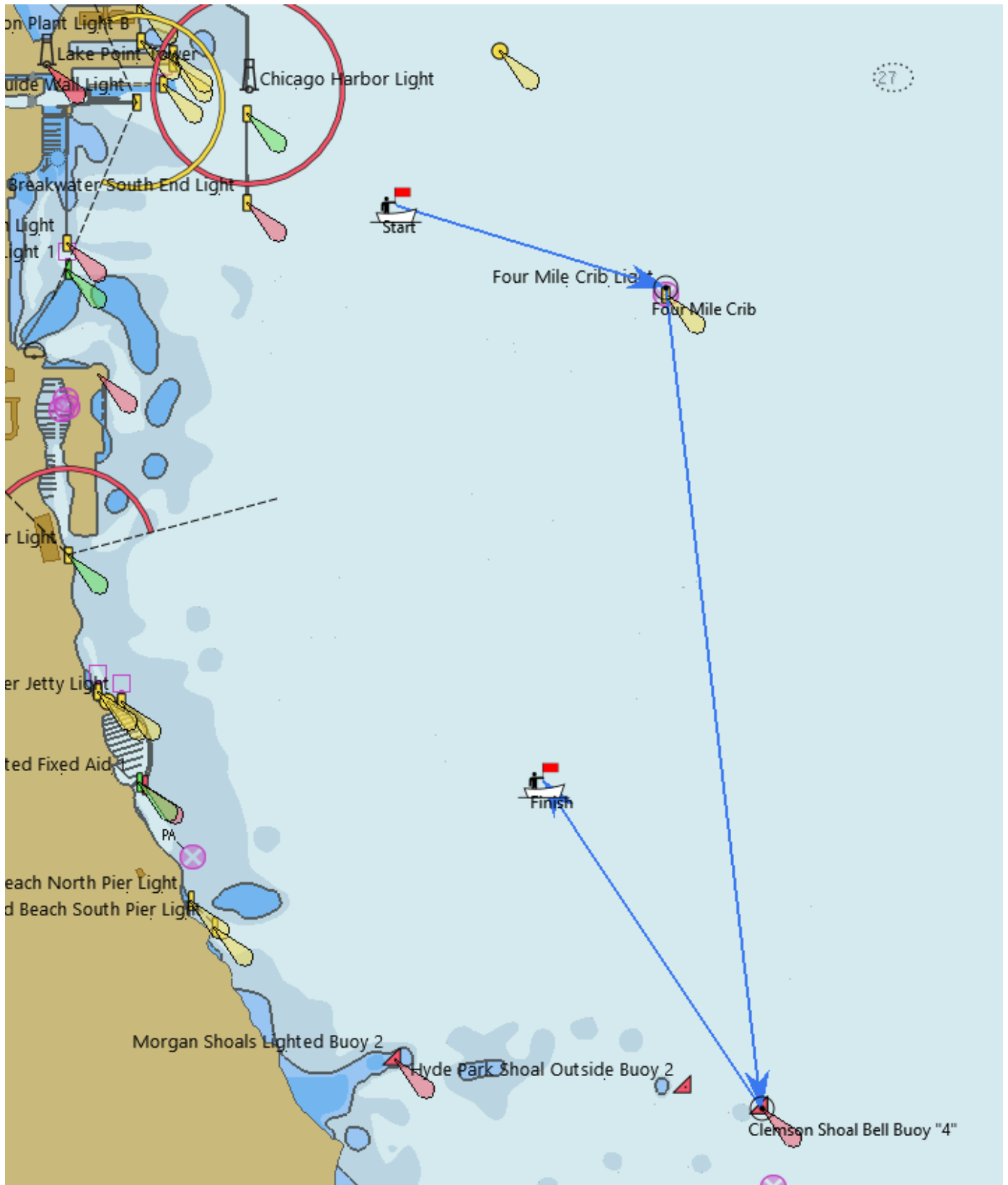
| CLASS | CLASS FLAG | WARNING | START TIME | RATINGS |
|--------|------------|---------|------------|-------------------|
| JAM | "D" | 1130 | 1135 | All non-spinnaker |
| PHRF 1 | 1 | 1135 | 1140 | All spinnaker |

For further information please contact racing@jacksonparkyachtclub.org

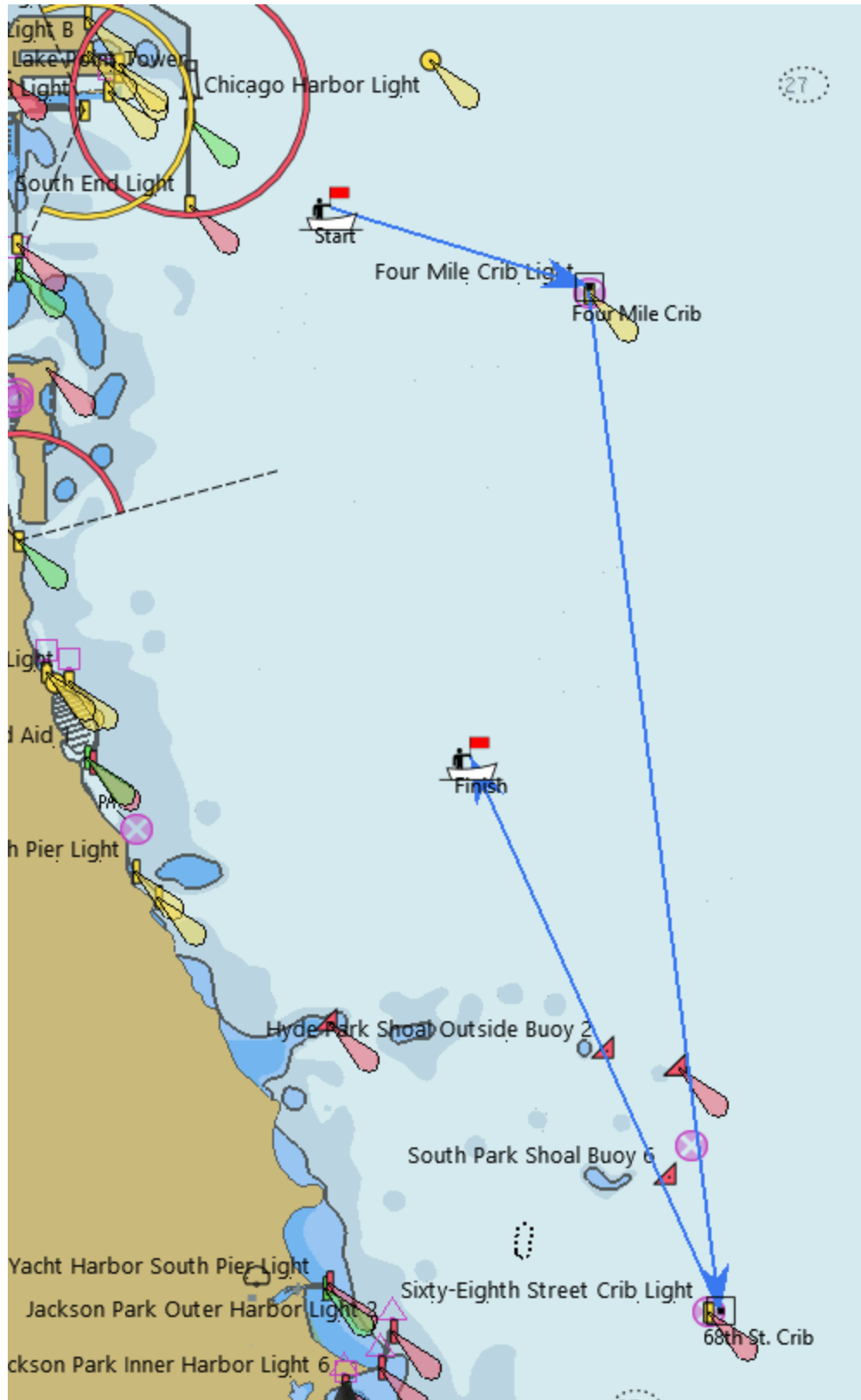
APPROXIMATE COURSE DIAGRAMS

THESE DIAGRAMS ARE NOT TO BE USED FOR NAVIGATIONAL PURPOSES

COURSE 1 (SHORT)



COURSE 2 (MEDIUM)



COURSE 3 (LONG)

