



# INTERLAKE SAILING CLASS ASSOCIATION 2023 INTERLAKE NATIONALS GRAND TRAVERSE YACHT CLUB

JULY 28TH - AUGUST 1ST – WEST GRAND TRAVERSE BAY – TRAVERSE CITY MI  
ORGANIZING AUTHORITY: INTERLAKE SAILING CLASS ASSOCIATION  
HOST: GRAND TRAVERSE YACHT CLUB

## SAILING INSTRUCTIONS

### 1. AUTHORITY & VENUE

- 1.1 The Interlake Sailing Class Association (ISCA) is the Organizing Authority (OA) and the Grand Traverse Yacht Club (GTYC) is the host.
- 1.2 On-shore functions for the 2023 Interlake Nationals will be at the Grand Traverse Yacht Club located at 13653 S. West Bay Shore Drive, Traverse City, MI 49684. Phone: 231-946-9776
- 1.3 The Race Office will be located in the Commodore's Room in the GTYC clubhouse adjacent to the front entrance. This room will also be the venue for protest hearings.
- 1.4 The races will be conducted in the waters south of the Red 8 government mark on West Grand Traverse Bay of Lake Michigan (See Attachment B for reference), accessible from GTYC
- 1.5 Auxiliary and temporary storage will be available at GTYC's Bluewater Hall location at 13424 S. West Bay Shore Drive
- 1.6 Webpages:
  - Class: [interlakesailing.org](http://interlakesailing.org)
  - Host: [gtyc.org](http://gtyc.org)
  - Event: [gtyc.org/interlakenationals](http://gtyc.org/interlakenationals)
- 1.7 Online Entry, Notice Board, Results, & Information:  
<https://yachtscoring.com/emenu.cfm?eid=15756>

### 2 RULES & SCORING

- 2.1 The regatta will be governed by the rules as defined in The Racing Rules of Sailing (RRS) and the rules of the ISCA for sanctioned events.
- 2.2 RRS 60, 63.1, & 63.2.a shall not apply
- 2.3 When flag AP is displayed ashore, '1 minute' is replaced with 'not less 30 minutes' in Race Signals AP.
- 2.4 "If there is a conflict between the Notice of Race (NOR) and the Sailing Instructions (SI), the SI shall apply" is added to RRS 63.7
- 2.5 The first two sentences of RRS 44.1 are changed to: 'A boat may take a One-Turn Penalty when she may have broken a rule of Part 2 or RRS 31 in an incident while racing. However, when she may have broken one or more RRS of Part 2 in an incident while in the zone around a mark other than a starting mark, her penalty shall be a Two-Turns Penalty.'

- 2.6 A boat intending to protest shall notify the Race Committee (RC) Signal Vessel of her intention to protest and the sail number of the boat she is intending to protest after clearing the finish line. She may do this via hail to the RC Signal Vessel or by VHF radio” is added to RRS 61. This does not relieve a boat’s time limit responsibility to file during the protest time limit.
- 2.7 “Boats failing to display required advertising or bow numbers shall not be protested by other boats” is added to RRS 60.1.a
- 2.8 ISCA Article III Hulls and Spars, #14,c, is changed to allow VHF radios to be powered “on” while racing to allow for incoming communication from the Race Committee. As described in the Interlake Specifications Art III sect 14.e., the RC intends to communicate with competitors using VHF. The RC may transmit via VHF radio information concerning safety, OCS boats, and general information to assist in the management of the event. Except in an emergency, a boat that is racing shall not make or receive voice or data communication that is not available to all boats. VHF Channel will be available in the sailing instructions.
- 2.9 Three races are required to be completed in the Champions and Challengers Series to constitute a series. If four or fewer races are completed in the Championship or Challengers Series, a boat’s series score shall be the total of her race scores. This changes RRS A2.1
- 2.10 One race is required to be completed in the Junior and Women’s Championship Series constitute a series. A boat’s series score shall be the total of her race scores. This changes RRS A2.1

### **3. COMMUNICATIONS WITH COMPETITORS**

- 3.1 Notices to competitors will be posted on the official notice board online at Yachtscoring.com ([https://yachtscoring.com/notice\\_board\\_summary.cfm?eid=15756](https://yachtscoring.com/notice_board_summary.cfm?eid=15756)) A courtesy notice board will be maintained in the clubhouse on the bulletin board opposite the heads.
- 3.2 A competitors’ meeting for all competitors in the Women and Juniors Championships will be held at 1100 hrs Saturday, June 29th at the flagpole on the clubhouse lawn.
- 3.3 A competitors’ meeting for all competitors in the National Championships will be held at 1800 hrs Saturday, June 29th at the flagpole on the GTYC clubhouse lawn.
- 3.4 On the water, the race committee intends to communicate with competitors on **VHF radio channel 69**. This does not alter the competitor’s responsibility to observe the visual signals displayed by the RC.
- 3.5 The RC will address competitors by their bow number. In communication to the RC, competitors may refer to boats by with bow number or sail number

### **4. CHANGES IN SAILING INSTRUCTIONS**

- 4.1 Any change to the sailing instructions will be posted before 1000 hrs on the day it will take effect. Any change to the schedule of races will be posted by 2000 hrs on the day before it will take effect.

### **5. SIGNALS MADE ASHORE**

- 5.1 Signals made ashore will be displayed from the GTYC Flagstaff. Flag AP with two horns (one horn when lowered) means “race postponed.” The warning signal will be made not less than thirty minutes after AP is lowered.

### **6. SCHEDULE**

- 6.1 The total number of races attempted each day for the Champions Division is nominally three and up to five. The total number of races each day for the Challengers Division may be one less per day than the number of races for the Champions Division.

- 6.2 The total number of races to be attempted for the Women's and Junior Championships is up to three.

*Friday 7/28/2023*

1600 - 2100 hrs Check-in & Measurement  
1700 - 2100 hrs GTYC Bar & Dining Room open (Dinner served 5:30-7:30)

*Saturday 7/29/2023*

0900 – 1800 hrs Check-in & Measurement\*  
1100 hrs Competitors Meeting - Juniors & Women divisions  
1230 hrs\*\* Earliest Possible First Warning Signal  
Juniors & Women divisions - up to three races to be sailed  
1800 hrs Competitors Meeting for Championship & Challengers divisions.  
1900 hrs\*\*\* Welcome BBQ Dinner  
*BBQ Dinner included with registration*

*Sunday 7/30/2023*

1330 hrs\*\* First Warning Signal - Championship & Challengers divisions  
Up to three races to be sailed  
*Dinner on your own "Out on the Town"*

*Monday 7/31/2023*

1330 hrs\*\* Earliest Possible First Warning Signal  
Championship & Challengers divisions  
Up to three races to be sailed  
1900 hrs\*\*\*\* *Banquet Dinner and Annual Class Meeting*  
*Banquet Dinner tickets sold separate*

*Tuesday 8/1/2023*

1000 hrs\*\* Earliest Possible First Warning Signal - Championship & Challengers divisions — Up to two races to be sailed  
1400 hrs No first warnings for starting sequences after this time.  
*Awards and lunch to follow ASAP. Lunch included with registration.*

- \* Registration & Measurement for Juniors & Women divisions will close at 1030
- \*\* Timing of First Warning Signal is subject to change as circumstances and conditions warrant.
- \*\*\* or after Juniors & Women finish, whichever is later.
- \*\*\*\* or after racing finishes, whichever is later.

**7. CLASS FLAGS**

- 7.1 The class flag for signals for the Championship fleet will be a yellow flag with the class insignia in black.
- 7.2 The class flag for signals for the Challenger fleet will be a red flag with the class insignia in white.

- 7.3 If the start for the Championship and Challenger fleets are combined, The class flag for signals will be a yellow flag with the class insignia in black, *as allowed by RRS AAP J2.2 (c), the procedure for giving oral changes to the Sailing Instructions on the water.*
- 7.4 The class flag for signals for the Women's/Junior series on Saturday (7/29) will be a yellow flag with the class insignia in black.

**8. COURSES** (See Attachment A for reference)

- 8.1 The race courses will be either a four leg windward-leeward course or a five-leg triangular/windward-leeward course using inflatable drop marks.
- 8.2 The four leg windward/leeward course will be signaled with a “W” sign posted on the aft end of the signal boat.
- 8.3 The five leg triangle/ windward/leeward course will be signaled with a “T” sign posted on the aft end of the signal boat.
- 8.4 The RC intends to use an offset mark adjacent to the windward mark. If an offset mark is set adjacent to the windward mark, boats shall also round the offset mark after rounding the windward mark.
- 8.5 For Course “W”, the RC intends to have a gate at the leeward mark consisting of two inflatable marks. If one of the gate marks is missing, that remaining mark shall be left to port.
- 8.6 If a triangle/windward/leeward course is sailed, there will be no windward offset mark and one leeward mark
- 8.7 The number of legs per race will not be shortened while racing.

**9. MARKS**

- 9.1 The primary windward mark will be an orange inflatable tetrahedron.
- 9.2 The windward change mark will be a yellow inflatable tetrahedron. This will be replaced after situational use and replaced with primary orange inflatable tetrahedron
- 9.3 If an offset mark is used, it will be a small yellow inflatable ball.
- 9.4 The starting mark will be an orange cylinder. (height to width: 2 to 1)
- 9.5 The leeward mark(s) will be a yellow inflatable can (height to width: 1 to 1). If a gate is set, the second leeward mark will be identical in appearance.
- 9.6 The leeward mark is not a mark of the course on the final downwind leg
- 9.7 The reach mark (triangle) will be a orange inflatable can (height to width: 1 to 1)
- 9.8 The finish mark will be a small orange inflatable can (height to width: 1 to 1)

**10. SIGNAL BOAT** (see Attachment C for reference)

- 10.1 The Signal Boat will be *Unshine*, a Botnia-Targa 25 trawler
- 10.2 The Signal Boat will fly a blue “RC” flag underway and prior to preparations for the first sequence. The “RC” flag will not be flown during races.
- 10.3 The signal boat will display on its transom three black boards which communicate the course, the heading to the windward mark, and approximate distance to windward mark
- 10.4 The signal boat will fly a “Lima” flag when recording the daily competitors check-in (see 20.1)
- 10.5 The signal boat will deploy a yellow inflatable ball as a “stand-off” mark from its stern. This stand-off mark and its pennant are considered to be part of the Signal Boat.

## **11. THE START**

- 11.1 Races will be started using Rule 26.
- 11.2 The starting line will be between a staff displaying an orange & white checkered flag on the RC Signal boat at the starboard end and the course side of the start pin/mark at the port end.
- 11.3 If any part of a boat's hull is on course side of the starting line at the start signal and she is identified, the RC may hail her bow number as a courtesy. Failure to have been hailed by number, or failure to hear such a hail, or the nature/order of the hail will not be grounds for a request for redress. *This changes RRS 62.1(a)*
- 11.4 A boat shall not start later than three (3) minutes after her starting signal and will be scored *DNS* without a hearing. *This changes RRS A5.1 and A5.2*

## **12. CHANGE OF COURSE AFTER THE START**

- 12.1 To change the next leg of the course, the race committee will lay a new mark (SI 9.1) and remove the original mark as soon as practicable.
- 12.2 When, in a subsequent change, a new mark is replaced, it will be replaced by an original mark.
- 12.3 The race committee may adjust the angle of a gate without making any signals.
- 12.4 Changes in course will only be made at the leeward gate/mark.

## **13. THE FINISH**

- 13.1 The finish line will be between a staff displaying an orange & white checkered flag/shape on the signal boat and the course side of the finish mark at the starboard end of the line.
- 13.2 The finish mark will be small orange inflatable can set at a length approximately 1/3 to 1/2 the length of the starting line. This mark may be set prior to the start of the race and is not a mark of the course during the start.

## **14. TIME LIMIT**

- 14.1 For the Championship/Challenger fleets, the time limit will be 70 minutes. Time limit for first boat to first mark is 30 minutes. Boats failing to finish within 15 minutes after the first boat finishes will be scored DNF. *This changes RRS 35.*
- 14.2 For the Women's/Junior Championships, the time limit will be 60 minutes. Time limit for first boat to first mark is 25 minutes. Boats failing to finish within 15 minutes after the first boat finishes will be scored DNF. *This changes RRS 35.*

## **15. REPLACEMENT OF CREW OR EQUIPMENT**

- 15.1 Substitution of competitors beyond the final entry list shall not be allowed without prior written approval of appointed representatives of the OA.
- 15.2 Substitution of damaged or lost equipment shall not be allowed unless authorized by appointed representatives of the OA. Request for substitution shall be made to the committee at the first reasonable opportunity.

## **16. EQUIPMENT AND MEASUREMENT CHECKS**

- 16.1 On the water, a boat can be instructed by appointed representatives of the OA to proceed immediately to a designated area for inspection. Ashore, equipment may be inspected at any time for compliance with the class rules, notice of race, and sailing instructions.
- 16.2 The hull & spars inspection bay during the regatta will be the first space adjacent to the launch ramp

16.3 The area for the inspection of sails will be the mezzanine upstairs in the GTYC clubhouse.

## **17. BOW NUMBERS**

17.1 Bow numbers, as assigned and provided by the OA, will be used as the primary means of identification of boats during the event.

17.2 Bow numbers will be assigned and provided by the OA for boats that have not reported pre-existing bow numbers. Boats with dark hull colors will be provided numbers of contrasting colors.

17.3 Installation of the bow number shall not have the aft edge of the number more than 20" aft of the bow at the stem.

17.4 Installation of the bow number should not have the top edge of the number more than 5" beneath the sheerline of the gunwale.

17.5 Bow Numbers should be positioned as to not overlap registration numbers. This supersedes 17.3 and 17.4

## **18. HEARING REQUESTS**

18.1 A boat intending to protest shall notify the RC Signal Vessel of her intention to protest and the bow number or sail number of the boat she is intending to protest after clearing the finish line. She may do this via hail to the RC Signal Vessel or by using the VHF radio.

18.2 The protest time limit is sixty (60) minutes after the Principal Race Officer lands ashore after the last race of the day or the race committee signals no more racing today, whichever is later.

18.3 Hearing Request forms are available at the protest desk in Race Office.

18.4 Protests shall be heard in approximately the order of receipt.

18.5 Notices will be posted no later than 30 minutes after the protest time limit to inform competitors of hearings in which they are parties or named as witnesses. Hearings will be held in the protest room located in the Commodore's Room adjacent to the front door of the GTYC clubhouse

## **19. PENALTY SYSTEM**

19.1 RRS Appendix V2 – Post-Race Penalties – is in effect.

## **20. SAFETY REGULATIONS — *Signal Boat cell number is 616-450-6746***

20.1 All boats shall check in with the RC at the Signal Boat when it is displaying the "L" flag prior to the first race of the day. Each boat will sail past the Signal Boat on starboard tack and hail her bow number.

20.2 A boat that retires from a race or leaves the racing area is requested to notify the RC on VHF Ch 69, by cell phone, or by hailing any RC boat. A boat that subsequently returns to the racing area is asked to check in with the RC Signal Boat as in 18.1 or via VHF Ch 69. There will be no penalty for not checking out or back in.

20.3 ***The primary communication for all medical emergencies is 911***

20.4 **The Signal Boat has an AED aboard**

20.5 Weather will be monitored via the following applications: "My Radar", "Storm - Weather Radar", & "My Lightning Tracker". Decisions regarding racing by the OA and PRO will be based on these applications.

## **21. AWARDS**

21.1 Awards will be given in accordance with the Notice of Race.

## **22. CODE OF CONDUCT**

- 22.1 Competitors shall comply with any reasonable request from any official, and shall not behave so as to bring the event or the sport into disrepute.
- 22.2 Competitors are expected to comply fully with rule 2 at all times. Abuse or intimidation of other competitors, race officials, or officials of the host club will not be tolerated. All such incidents shall be reported to the Principal Race Officer. Repeated incidents by individuals or teams shall be reported to the protest committee and may be considered gross misconduct (a gross breach of sportsmanship).
- 22.3 When a competitor and/or crew is found to have committed an act of Gross Misconduct, the penalty shall be a scoring penalty equal to 40% of the entries in the race for each incident. Additionally, the competitor and/or boat that was responsible for the crew may not discard this race in the series.
- 22.4 Competitors shall not obstruct RC vessels as they conduct operations including setting marks, anchoring, and judging the start/finish line. Repeated incidents by individuals or teams shall be reported to the protest committee.

## **23. RISK STATEMENT**

- 23.1 RRS 3 states: 'The responsibility for a boat's decision to participate in a race or to continue to race is hers alone.' By participating in this event each competitor agrees and acknowledges that sailing is a potentially dangerous activity with inherent risks. These risks include strong winds and rough seas, sudden changes in weather, failure of equipment, boat handling errors, poor seamanship by other boats, loss of balance on an unstable platform and fatigue resulting in increased risk of injury. **Inherent in the sport of sailing is the risk of permanent, catastrophic injury or death by drowning, trauma, hypothermia or other causes.**

## **24. INSURANCE**

- 24.1 Each participating boat shall be insured with valid, third party liability insurance with a minimum coverage of \$300,000 USD

## **25. CONTACTS**

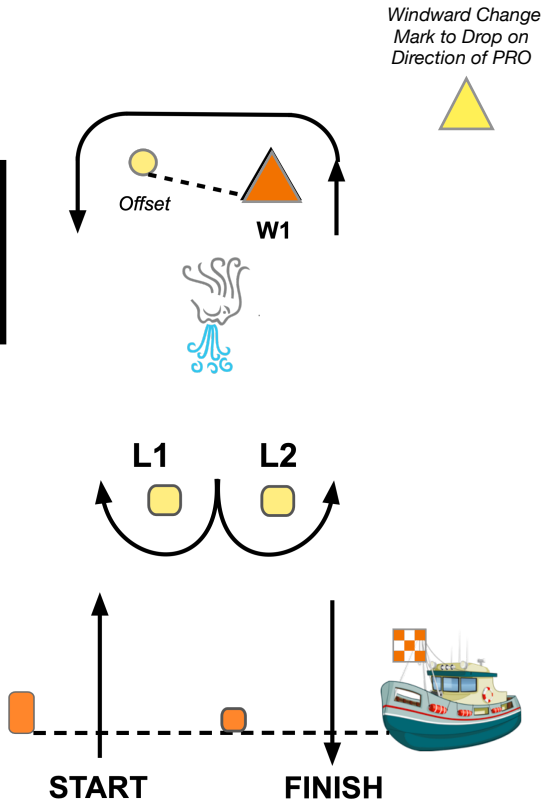
- 25.1 Event Chair: Tim Smith, tcsmith00@gmail.com, 231-392-5265
- 25.2 Race Management: Jordan Owen, manager@gtyc.org, 231-883-5741



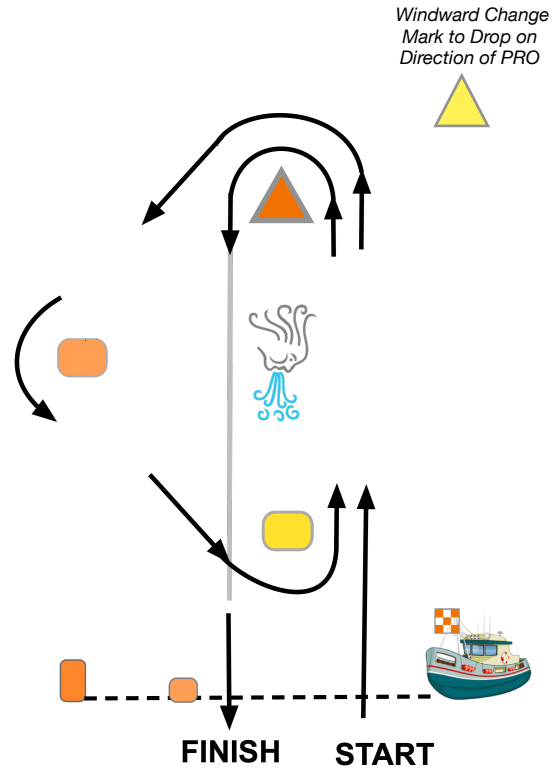




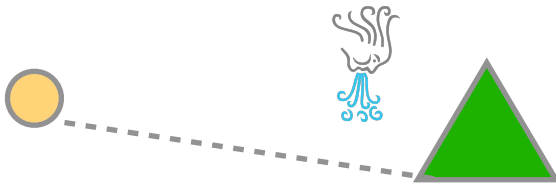
**Four Leg  
Windward/  
Leeward,  
Downwind  
Finish**



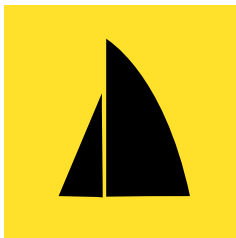
**Five Leg  
Triangle/  
Windward/  
Leeward  
Downwind  
Finish**



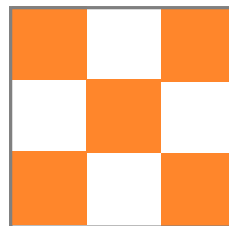
**Offset Mark** set approximately 6 Boat Lengths away from the windward mark, 80 to 90 degrees off the wind direction in relation to the mark



**Change of Course  
at Leeward Mark:**  
 Charlie + Heading Whiteboard + Whistle



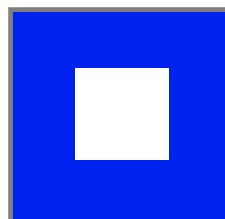
**Championship Fleet  
Class Flag**



**Start/Finish  
Flag**

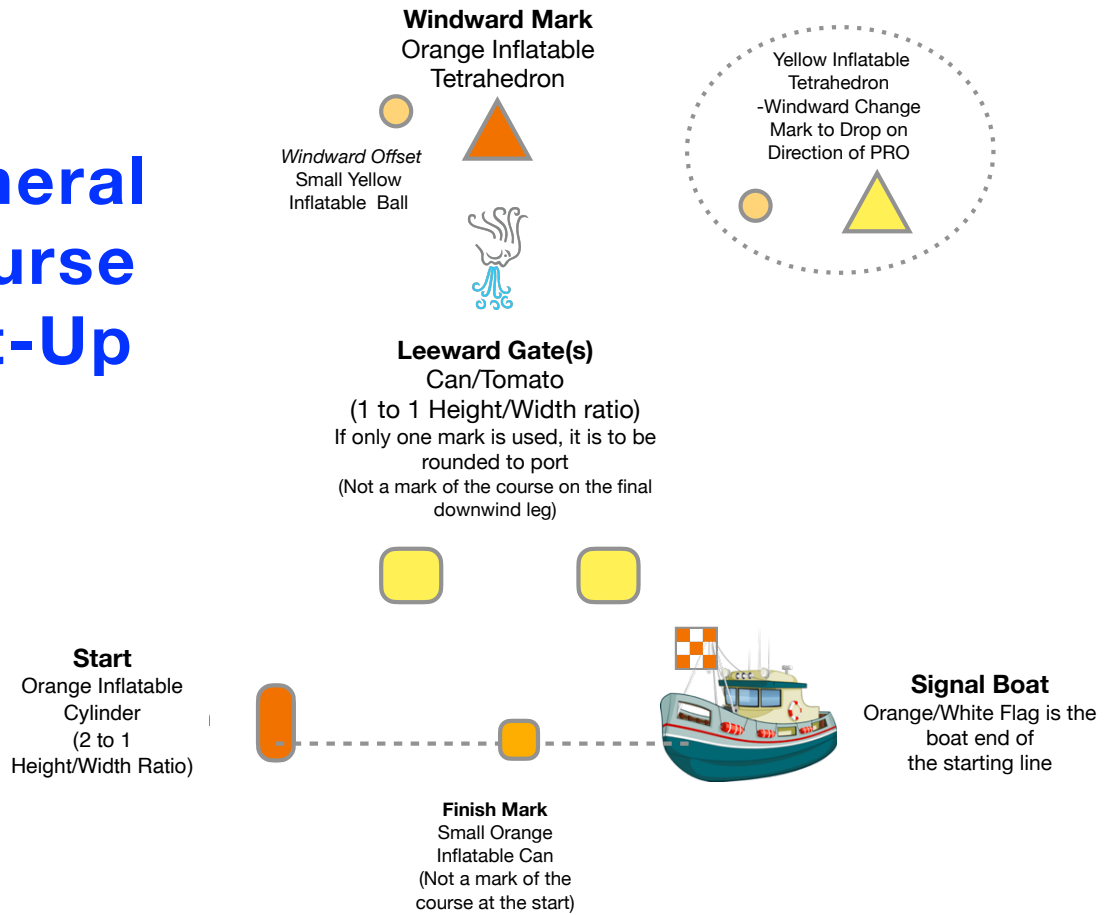


**Challenger Fleet  
Class Flag**

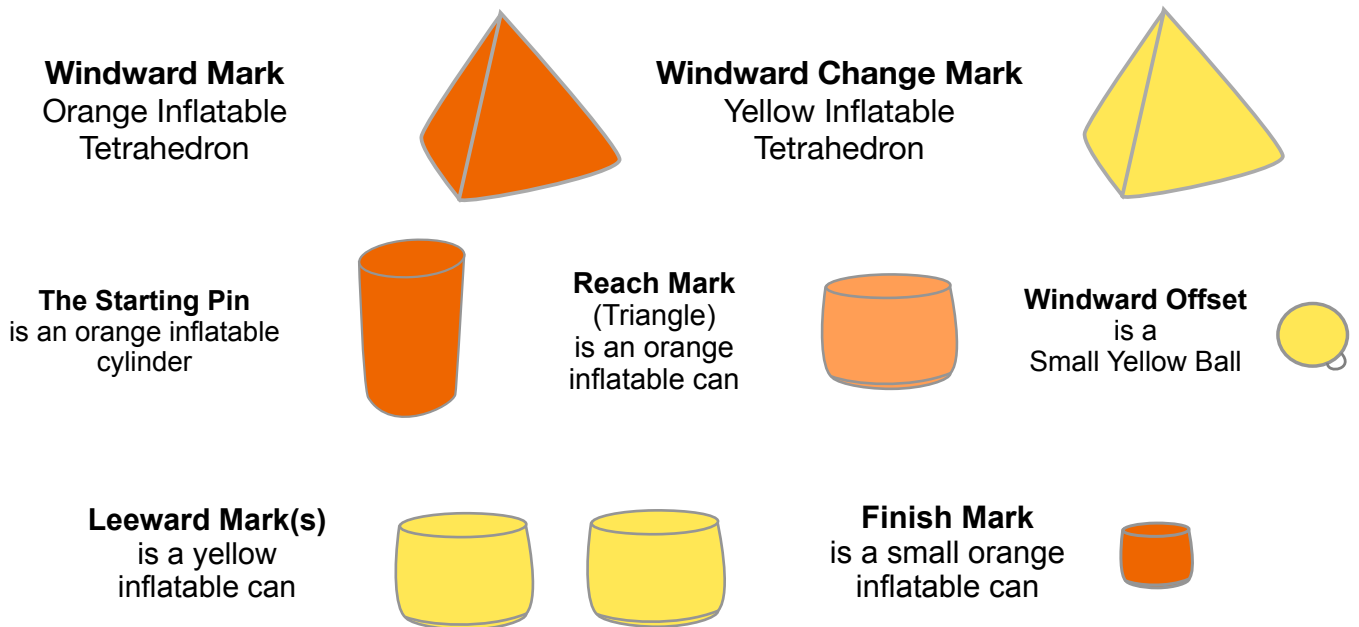


**Prep Flag**  
 (RRS 26: Up at 4 min,  
 Down at 1 min.)

# General Course Set-Up



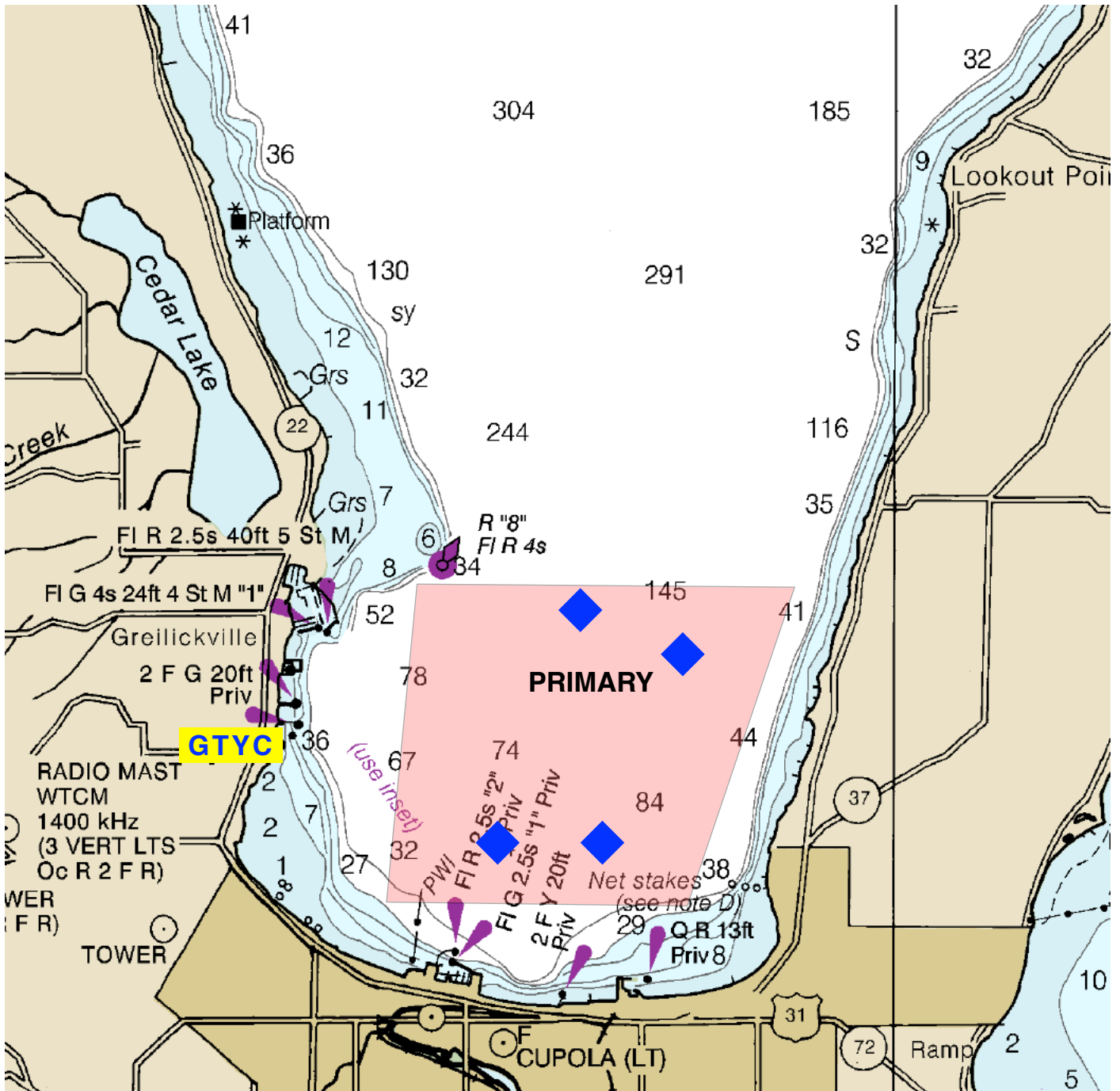
## General Race Communications: VHF Ch. 69



**RACE AREA - WEST GRAND TRAVERSE BAY**

Red — Primary Race Area, 1 sq mile south and east of Government Mark Red 8

Blue Diamonds - Most Frequent Signal Boat Locations



## SIGNAL BOAT DETAILS

From SAILING INSTRUCTIONS, **10. SIGNAL BOAT**

- 10.1 The Signal Boat will be *Unshine*, a Botnia-Targa 25 trawler
- 10.2 The Signal Boat will fly a blue “RC” flag underway and prior to preparations for the first sequence. The “RC” flag will not be flown during races.
- 10.3 The signal boat will display on its transom three black boards which communicate the course, the heading to the windward mark, and approximate distance to windward mark
- 10.4 The signal boat will fly a “Lima” flag when recording the daily competitors check-in (see SI 20.1)
- 10.5 The signal boat will deploy a yellow inflatable ball as a “stand-off” mark from its stern. This stand-off mark and its pennant are considered to be part of the Signal Boat.

*Signal Boat Transom:*



*Signal Boat Port Profile:*



**RACE COMMITTEE COMMUNICATION: VHF ch 69**

**EMERGENCY PHONE # FOR SIGNAL BOAT: 616-450-6746**