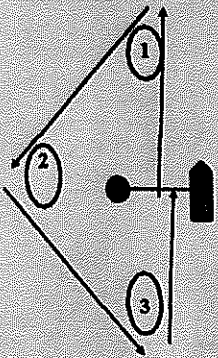


SI Ammendment #1

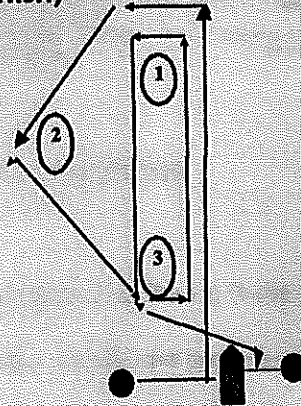
Attachment B - Possible Courses

Course T (start, 1, 2, 3, finish)



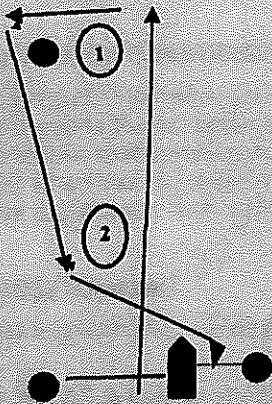
Note - all marks to port

Course O - (start, 1, 2, 3, 1, 3, finish)



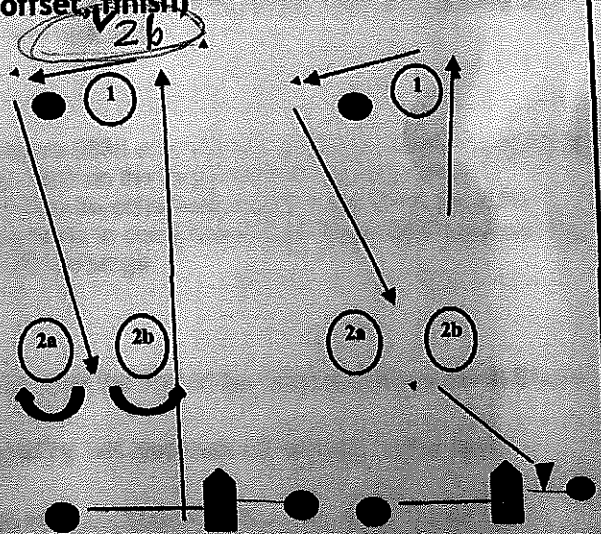
Note - all marks to port

Course W1 - (start, 1, offset, 2, finish)



Note - all marks to port

Course W2 - (start, 1, offset, between 2a and 2b, 1, offset, finish)



NOTE - If only one leeward mark is present it shall be rounded to port. All other marks to port.

Handwritten signature
 BOB 1300 hrs
 4/3/23