



**INTERNATIONAL DRAGON CLASS
75th EDINBURGH CUP**
**Incorporating the International Dragon Association UK Grand Prix,
Grade 1 Event
13 - 19 AUGUST 2023**
**Organizing Authority (OA) Royal Yacht Squadron (RYS)
in conjunction with the British Dragon Association (BDA)**
Cowes, IOW, UK
SAILING INSTRUCTIONS (SI)

NOTATIONS

The notation '[DP]' in a rule in these SI means that the penalty for that rule may, at the discretion of the protest committee, be less than disqualification.

1. RULES

1.1 See NoR 1.

2. CHANGES TO SAILING INSTRUCTIONS

2.1 Any changes to the SI will be posted before 0900 on the day it will take effect, except that any change to the Schedule of Races will be posted by 2000 on the day before it will take effect.

3. COMMUNICATIONS WITH COMPETITORS

3.1 Notices to competitors will be posted on the Official Notice Board (ONB).

3.2 The ONB will be online at (www.yachtscoring.com) and the Race Office will be at the RYS.

3.3 The Race Committee (RC) intends to broadcast race information and course information by VHF International Ch 05 and repeated on the Event Telegram Group. See Addendum C.

3.4 Competitors wishing to communicate with the Race Committee should do so on VHF Ch 77.

3.5 [DP] Except in an emergency, from the First Warning Signal until the end of the last race each day a boat shall not make voice or data transmissions and shall not receive voice or data communication that is not available to all boats, unless using equipment provided by the OA.

4. CODE OF CONDUCT

4.1 Competitors and support persons shall comply with reasonable requests from race officials.

5. SIGNALS MADE ASHORE

- 5.1 Signals made ashore will be displayed at the RYS Lodge Flagstaff and may be communicated by VHF and on Telegram.
- 5.2 When Flag AP is displayed ashore, “1 minute” is replaced by “not less than 45 minutes”. This changes Race Signals AP.

6. SCHEDULE OF RACES

- 6.1 See NoR 9.
- 6.2 The RC may alter the Schedule of Races to cater for adverse weather conditions.

7. CLASS FLAG

- 7.1 The Class Flag will be ICOS Code Flag D:



8. RACING AREA

- 8.1 Racing will take place from a Committee Vessel (CV) in the Central Solent. VHF Call Sign “CASTLE TWO”.
- 8.2 The approximate location of the CV will be announced by VHF and on the Telegram group using the Solent Two Character Codes in Addendum B of these SI.

9. COURSES

- 9.1 The courses to be sailed will be windward / leeward as described in Addendum A.
- 9.2 Soon after the orange flag attention signal is displayed, and before the warning signal, the RC signal vessel will display the course, approximate compass bearing and distance to Mark 1. The course, compass bearing and distance to Mark 1 will also be announced on VHF Ch 05.
- 9.3 In cross-tide wind conditions, after the first leg, subsequent legs of the course may be ‘walked’ down tide to achieve reasonable leeward and windward legs.
- (a) Flag W will be displayed at or before the warning signal for a race where the course will be ‘walked’ down tide.
- (b) When Flag W has been displayed, no course change signals (using Flag C) or new marks will be used except when the leg length is being increased or decreased or the course is changed for a wind shift. This changes RRS Race Signals and RRS 33.
- 9.4 The course for the Crew Race on the last day of racing will be an “around the cans” race that will use the Solent Two Character Codes in Addendum B. The course for the Crew Race will be announced on VHF Ch 05 and repeated on the event Telegram group. The start will be from the CV and the finish will be on the RYS line. The RYS finish line is between the main **RYS Flagstaff and an orange inflatable buoy** approximately 400 metres to the north.

10. MARKS

- 10.1 With reference to Addendum B, Marks 1, 1a, 4s & 4p will be **orange inflatable marks**.
- 10.2 In addition, the RC intends to position a CV in the vicinity of mark 1 to aid competitors’ identification. The CV will display “Committee Vessel” on each side and a large CV flag.
- 10.3 The starting marks are **2 x Race CVs** at each end of the line.

- 10.4 The finishing marks for windward finishes (WA) are a **Race CV** and a **black inflatable mark**.
- 10.5 The finishing marks for leeward finishes (LA) are **2 x Race CVs**.
- 10.6 When new marks have been laid to change the next leg of a course, they will be black inflatable marks.
- 10.7 When in a subsequent change, marks are replaced, they will be replaced by original marks.
- 10.8 A race committee vessel positioned near a mark may display a flag showing the colour of the next mark or marks, except for the final leg to the finish line.

11. OBSTRUCTIONS

- 11.1 Boats shall not anchor or kedge in the Cowes Harbour Fairway or within the area denoting power cables and gas pipes between Stone Point and Gurnard Bay, as shown on Admiralty Chart 2040, or within the mining ground area north-east of Ryde Sand.
- 11.2 All boats shall comply with Associated British Ports Notice to Mariners No 06 of 2023 giving details of a [Precautionary Area and Moving Prohibited Zone \(MPZ\)](#). The MPZ shall rank as an obstruction for the purposes of RRS 19 and 20. See Addendum D.
- 11.3 Whilst racing, boats shall pass to the north of the Cowes Breakwater.

12. THE START

- 12.1 Races will be started by using RRS 26 with the Warning Signal made Five (5) minutes before the Starting Signal.
- 12.2 To alert boats that a race will soon begin, the Orange Starting Line Flag will be displayed on the CV signal vessel with one sound signal at least five minutes before a Warning Signal is made.
- 12.3 The starting line is between staffs displaying orange flags on the starting marks.
- 12.4 If any part of a boat's hull is on the course side of the starting line at her starting signal, and she is identified, the RC will attempt to broadcast her sail number as soon as practicable on VHF Ch 05 after Flag X has been displayed.
- 12.5 A boat that does not start within five (5) minutes after her starting signal will be scored Did Not Start (DNS) without a hearing. This changes RRS A5.1 and A5.2.

13. CHANGE OF THE NEXT LEG OF THE COURSE

- 13.1 The position of any mark(s) may be adjusted by up to plus or minus 10° (degrees) relative to previous location and up to approximately 200 metres to windward or leeward without signalling Flag C, a direction signal, a length signal or a sound signal. The RC intends to broadcast the approximate bearing and distance of the adjusted mark on VHF Ch 05. This changes RRS 33.
- 13.2 When a change to the next leg of the course has been signalled, the RC will lay a new mark/marks (or move the finishing line) and remove the original mark as soon as practicable. The RC intends to broadcast the approximate bearing and distance of the new mark on VHF Ch 05. This changes RRS 33.

14. THE FINISH

- 14.1 The finishing line for **WA courses** is between a staff displaying a **blue flag** on a **Race CV** and the course side of a **black inflatable mark**.
- 14.2 The finishing line for **LA courses** is between staffs displaying **blue flags** on **2 x Race CVs**.

15. PENALTY SYSTEM

- 15.1 See NoR 14.

15.2 A boat that has taken a penalty or retired under RRS 31 or 44.1 shall complete an acknowledgement form at the RYS Race Office within the protest time limit.

16. TIME LIMITS

16.1 The Mark 1 Time Limit, Race Time Limit (see RRS 35), Finishing Window and the Target Time are shown in the table below.

Mark 1 Time Limit	Race Time Limit	Finishing Window	Target Race Time
45 mins	180 mins	30 mins	90 - 120 mins

16.2 If no boat has passed Mark 1 within the Mark 1 Time Limit, or if no boat has finished within the Race Time Limit, the race shall be abandoned.

16.3 Finishing Window. The time limit for boats to finish after the first boat sails the course and finishes is 30 minutes. Boats that are still racing but do not finish within the finishing window, will be scored Time Limit Expired (TLE). The TLE score will be equal to the number of boats to finish plus 1 point. This changes RRS 35.

16.4 Target time for each race will be 90 - 120 minutes. Failure to meet the target time will not be grounds for redress. This changes RR62.1(a).

17. HEARING REQUESTS

17.1 Hearing request forms will be available at the Race Office. Protest and requests for redress or reopening shall be delivered to the Race Office within the Protest Time Limit. Contact mobile phone numbers shall be included on the Protest Form.

17.2 The Protest Time Limit is 90 minutes after the last boat has finished the last race of the day or the RC signals no more racing today, whichever is later.

17.3 Notices will be posted no later than 30 minutes after the Protest Time Limit to inform competitors of the hearings in which they are parties or named as witnesses. Hearings will be held in the Protest Room located at the RYS.

17.4 Notices of Protests by the RC, or Protest Committee (PC) will be posted to inform boats under RRS 61.1(b).

17.5 On the last scheduled day of racing, a request for redress based on a PC decision shall be delivered no later than 30 minutes after the decision was posted. This changes RRS 62.2.

18. SCORING

18.1 See NoR 15.

19. SAFETY REGULATIONS

19.1 A boat that retires from a race shall notify the RC as soon as possible on VHF Ch 77, or by hailing an official Event Support Boat or rib.

20. REPLACEMENT OF CREW OR EQUIPMENT

20.1 Substitution of crew or equipment will not be permitted without the prior written permission of the RC.

21. EQUIPMENT AND MEASURING CHECKS

21.1 See NoR 10.

22. SUPPLIED BOATS

22.1 Not applicable.

23. OFFICIAL VESSELS

23.1 The Signal CV will be a blue hulled motorboat Call Sign **CASTLE TWO**.

23.2 Mark laying vessels will be RYS Ribs.

23.3 Official vessels will be identified with the following flags:

- (a) RC signal vessel - “Committee Vessel” on hull.
- (b) RC pin start/ finish vessel – “Committee Vessel” on side of vessel.
- (c) RC finish vessel – “Committee Vessel” on side of vessel.
- (d) Mark laying vessels – RYS Ribs with RYS burgee on side.
- (e) Protest committee vessel – Blue “Jury” flag displayed.
- (f) Media – Yellow “Press” flag displayed.
- (g) Other official vessel - Green “Marshall” flag displayed.

24. SUPPORT TEAMS

24.1 See NoR 16.

24.2 In addition to the requirements of NoR 16, support vessels shall display a national flag and the identifying flag supplied by the organising authority at registration.

25. TRASH DISPOSAL

25.1 Trash may be placed on official vessels.

26. BERTHING

26.1 See NoR 18.

27. HAUL-OUT RESTRICTIONS

27.1 See NoR 19.

28. DIVING EQUIPMENT AND PLASTIC POOLS

28.1 See NoR 20.

29. PRIZES

29.1 See NoR 24.

30. RISK STATEMENT

30.1 See NoR 22.

31. INSURANCE

31.1 See NoR 23.

32. FURTHER INFORMATION

32.1 See NoR 25 or contact the race office at the address below:

The Royal Yacht Squadron
The Castle
Cowes
PO31 7QT
Tel: 01983 292191
Email: mail@rys.org.uk

ADDENDA:

- A. Course Illustrations – Windward Leeward.
- B. Solent Chartlet and Two Character Codes for Racing Marks.
- C. Telegram Group details.
- D. Notice to Mariners No 06 of 2023.

ADDENDUM A – COURSES

Course Illustrations – Windward Leeward

LA

Course: Leeward finish

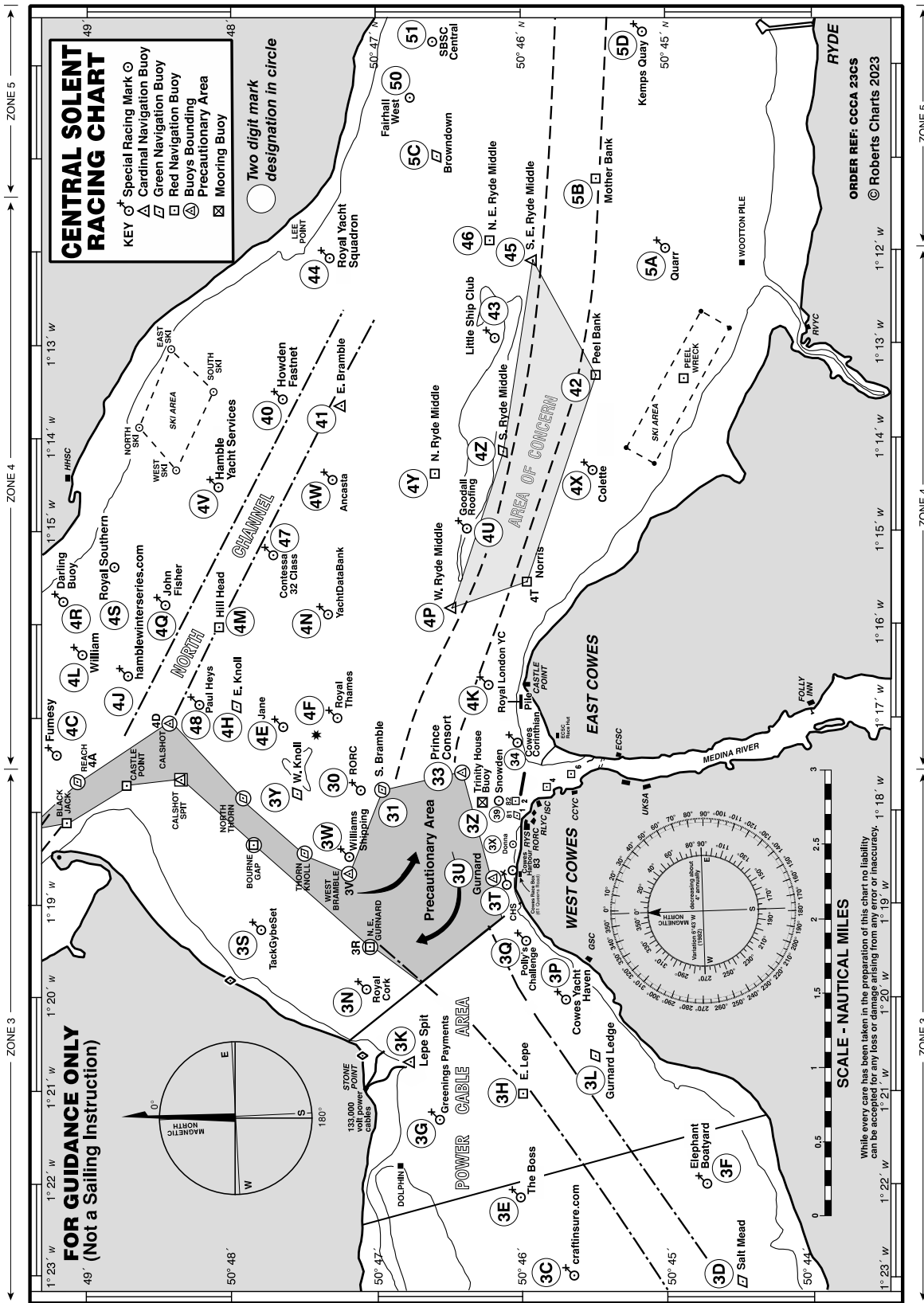
Signal	Mark Rounding Order
LA 2	Start – 1 – 1a – 4s/4p – 1 – 1a – Finish
LA 3	Start – 1 – 1a – 4s/4p – 1 – 1a – 4s/4p – 1 – 1a – Finish.
LA 4	Start – 1 – 1a – 4s/4p – 1 – 1a – 4s/4p – 1 – 1a – 4s/4p – 1 – 1a – Finish.

WA

Course: Windward Finish

Signal	Mark Rounding Order
WA 2	Start – 1 – 1a – 4s/4p – Finish
WA 3	Start – 1 – 1a – 4s/4p – 1 – 1a – 4s/4p – Finish.
WA 4	Start – 1 – 1a – 4s/4p – 1 – 1a – 4s/4p – 1 – 1a – 4s/4p – Finish.

ADDENDUM B – SOLENT TWO CHARACTER CODES



SOLENT AREA MARK CODES 2023

Zone 1 Western Approaches					Zone 3 Mid Solent (W) Continued				
ID	Name	Colour	Lat N	Long W	ID	Name	Colour	Lat N	Long W
1A	Peveril Ledge	R	50 36.41	01 56.10	3Z	Trinity House Buoy	Y	50 46.31	01 17.75
1B	Poole Bar No 1	G	50 39.29	01 55.14	30	RORC *	Y	50 47.12	01 17.72
1C	Stoneways Marine	Y	50 40.31	01 54.02	31	South Bramble	G	50 46.98	01 17.72
1D	The Rig Shop	Y	50 41.08	01 54.26	33	Prince Consort	BY	50 46.41	01 17.56
1E	Ledge Buoy	Y	50 41.50	01 41.60	34	Cowes Corinthian	Y	50 46.15	01 17.20
1F	Needles Fairway	RW	50 38.24	01 38.98	39	Snowden	Y	50 46.20	01 17.75
1G	South West Shingles	R	50 39.29	01 37.52	Zone 4 Mid Solent (E)				
1H	Bridge	YBY	50 39.63	01 36.88	4A	Reach #	G	50 49.05	01 17.65
1J	Shingles Elbow	R	50 40.37	01 36.05	4B	Coronation	Y	50 49.55	01 17.62
1K	North Head	G	50 42.69	01 35.52	4C	Fumesy*	Y	50 49.21	01 17.46
1L	Needles Lighthouse	RW	50 39.73	01 35.50	4D	Calshot #	BY	50 48.44	01 17.03
1M	Warden	G	50 41.48	01 33.55	4E	Jane *	Y	50 47.67	01 17.00
1N	North East Shingles	BYB	50 41.96	01 33.41	4F	Royal Thames	Y	50 47.20	01 17.00
11	East Hook	R	50 40.58	01 55.23	4G	Chieftain Training*	Y	50 49.45	01 16.91
12	MB/EYE Marine/Christchurch SC	Y	50 42.60	01 40.80	4H	East Knoll	G	50 47.96	01 16.83
13	Parkstone YC	Y	50 39.46	01 55.20	4J	hamblewinterseries.com *	Y	50 48.63	01 16.56
Zone 2 West Solent					4K	Royal London YC	Y	50 46.15	01 16.65
2A	Chewton Glen	Y	50 42.77	01 32.43	4L	William *	Y	50 49.03	01 16.49
2B	Dunford	Y	50 43.38	01 31.54	4M	Hill Head	R	50 48.07	01 16.00
2C	Colten	Y	50 43.83	01 30.86	4N	YachtDataBank	Y	50 47.27	01 15.90
2D	Lymington Yacht Haven	Y	50 44.17	01 30.10	4P	West Ryde Middle	YBY	50 46.48	01 15.79
2E	Circle Marine	Y	50 44.49	01 29.32	4Q	John Fisher*	Y	50 48.46	01 15.72
2F	Berthon	Y	50 44.20	01 29.22	4R	Darling Buoy *	Y	50 49.18	01 15.71
2G	Bridgeworks	Y	50 44.79	01 28.47	4S	Royal Southern*	Y	50 48.86	01 15.43
2H	Draycott's	Y	50 44.30	01 28.16	4T	Norris #	R	50 45.97	01 15.51
2J	Sowley	Y	50 45.11	01 27.34	4U	Goodall Roofing	Y	50 46.43	01 15.09
2K	Cowes Radio	Y	50 44.83	01 26.09	4V	Hamble Yacht Services	Y	50 48.13	01 14.64
2L	Royal Lymington YC	Y	50 43.14	01 31.95	4W	Ancasta	Y	50 47.33	01 14.59
2R	Powder Byrne	Y	50 45.43	01 25.89	4X	Colette	Y	50 45.53	01 14.39
2T	Lymington Bank	R	50 43.10	01 30.85	4Y	North Ryde Middle	R	50 46.61	01 14.31
2U	Tuakana	Y	50 43.67	01 29.50	4Z	South Ryde Middle	G	50 46.13	01 14.16
2X	Solent Bank	R	50 44.23	01 27.37	40	Howden Fastnet	Y	50 47.66	01 13.65
20	Sconce	BY	50 42.53	01 31.43	41	East Bramble	BYB	50 47.23	01 13.64
21	Black Rock	G	50 42.57	01 30.59	42	Peel Bank	R	50 45.49	01 13.35
22	Charles Stanley	Y	50 42.86	01 29.40	43	Little Ship Club	Y	50 46.16	01 13.09
24	Hall Hunter	Y	50 42.86	01 28.42	44	Royal Yacht Squadron	Y	50 47.31	01 12.10
25	Caldwells Estate Agents	Y	50 43.15	01 27.49	45	South East Ryde Middle	YB	50 45.93	01 12.10
26	Hamstead Ledge	G	50 43.87	01 26.18	46	North East Ryde Middle	R	50 46.21	01 11.88
27	Generation	Y	50 42.97	01 28.16	47	Contessa 32 Class	Y	50 47.70	01 15.25
28	Harwoods	Y	50.42.73	01.28.69	48	Paul Heys *	Y	50 48.21	01 16.68
Zone 3 Mid Solent (W)					Zone 5 East Solent				
3A	West Lepe	R	50 45.24	01 24.09	5A	Quarr	Y	50 45.03	01 11.89
3B	Newtown East	Y	50 44.36	01 23.80	5B	Mother Bank	R	50 45.49	01 11.21
3C	craftinsure.com	Y	50 45.64	01 23.12	5C	Browndown	G	50 46.57	01 10.95
3D	Salt Mead	G	50 44.51	01 23.04	5D	Kemps Quay	Y	50 45.18	01 09.65
3E	The Boss	Y	50 46.13	01 22.19	5E	Stokes Bay East	Y	50 46.26	01 08.76
3F	Elephant Boatyard	Y	50 44.72	01 21.95	5F	North Sturbridge	BY	50 45.33	01 08.23
3G	Greenings Payments	Y	50 46.58	01 21.46	5G	Baker Trayte Marine	Y	50 46.42	01 07.90
3H	East Lepe	R	50 45.93	01 21.07	5H	Portsmouth SC	Y	50 46.82	01 07.35
3K	Lepe Spit	YB	50 46.78	01 20.64	5J	KB Dry Stack	Y	50 46.61	01 07.29
3L	Gurnard Ledge	G	50 45.51	01 20.59	5K	Suffolk Sails	Y	50 47.08	01 06.78
3N	Royal Cork*	Y	50 47.07	01 19.88	5M	Gleeds	Y	50 46.11	01 06.52
3P	Cowes Yacht Haven	Y	50 45.68	01 19.98	5N	Mary Rose	Y	50 45.80	01 06.20
3Q	Polly's Challenge	Y	50 45.97	01 19.45	5P	Linington	Y	50 46.36	01 06.08
3R	North East Gurnard #	R	50 47.06	01 19.42	5Q	Outer Spit ©	YB	50 45.44	01 05.46
3S	TackGybeSet*	Y	50 47.81	01 19.25	50	Fairhall West @	Y	50 46.81	01 10.40
3T	CHS	Y	50 46.10	01 18.87	51	SBSC Central @	Y	50 46.60	01 09.85
3U	Gurnard	BY	50 46.22	01 18.84	© 5Q Outer Spit may only be used if given prior consent by QHM, which must be sought in weekday office hours @ Sundays: SBSC only except Cowes Week See other notes on next page				
3V	West Bramble #	YBY	50 47.20	01 18.65					
3W	Williams Shipping *	Y	50 47.20	01 18.55					
3X	Donna	Y	50 46.10	01 18.43					
3Y	West Knoll	Y	50 47.43	01 17.84					

Zone 3 continued in next column

See other notes on next page

SOLENT AREA MARK CODES 2023

Zone 6 Eastern Approaches					Zone 8 Local Marks & Positions				
ID	Name	Colour	Lat N	Long W	ID	Name	Colour	Lat N	Long W
6A	No Man's Land Fort	B	50 44.40	01 05.70	8A				
6B	Horse Sand Fort	B	50 45.01	01 04.34	8B				
6C	Warner	R	50 43.87	01 03.99	8C				
6D	Horse Elbow	G	50 44.26	01 03.88	8D				
6E	West Princessa	YBY	50 40.16	01 03.65	8E				
6F	Bembridge Ledge Buoy	BYB	50 41.15	01 02.81	8F				
6G	St Helens Buoy	R	50 43.36	01 02.41	8G				
6H	Dean Elbow	G	50 43.69	01 01.88	8H				
6J	Nab East	R	50 42.86	01 00.80	8J				
6K	Horse Tail	G	50 43.23	01 00.23	8K				
6L	Winner	YB	50 45.10	01 00.10	8L				
6M	Nab End	R	50 42.63	00 59.49	8M				
6N	Dean Tail	G	50 42.99	00 59.17	8N				
6P	New Grounds	BYB	50 41.84	00 58.49	8P				
6R	Nab Tower	B	50 40.08	00 57.15	8Q				
6S	Outer Nab No 2	BYB	50 38.43	00 57.70	8R				
Zone 7 Southampton Water					8S				
7A	Gymp	R	50 53.07	01 24.16	8T				
7B	Hythe Knock	R	50 52.83	01 23.81	8U				
7C	No 1 Swinging	G	50 53.00	01 23.44	8V				
7D	Weston Shelf	G	50 52.71	01 23.26	8W				
7E	Hythe 5	Y	50 52.24	01 23.18	8X				
7F	Jib *	Y	50 52.96	01 23.06	8Y				
7H	Moorhead	G	50 52.55	01 22.90	8Z				
7J	Deans Elbow	R	50 52.20	01 22.85	80				
7K	NW Netley	G	50 52.31	01 22.73	81				
7L	Hovercraft 4	Y	50 52.66	01 22.42	82				
7N	SWSA/HSC	Y	50 51.76	01 22.28	83				
7P	Hovercraft 3	Y	50 52.43	01 22.01	84				
7Q	Netley	G	50 52.03	01 21.81	85				
7R	Lains Lake	R	50 51.59	01 21.65	86				
7S	Deans Lake	R	50 51.40	01 21.59	87				
7T	Hovercraft 2	Y	50 52.21	01 21.58	88				
7U	Hound	G	50 51.68	01 21.52	Zone 9 Laid Marks				
7V	Hovercraft 1	Y	50 51.99	01 21.16	9A	Windward Laid Mark			
7W	After Barn	G	50 51.53	01 20.82	9B	Windward Spreader Mark			
7Y	Cadland	R	50 51.02	01 20.54	9C	Leeward Laid Mark			
7Z	Greenland	G	50 51.11	01 20.38	9D	Leeward Spreader Mark			
70	Cathead *	Y	50 50.61	01 19.24	9E	Leeward Gate			
71	Mark *	Y	50 49.56	01 18.94	9F	Middle Gate			
72	Hamble Point	YB	50 50.15	01 18.66	9G	Wing Mark			
73	Bald Head	G	50 49.80	01 18.07	9H	Outer Distance Mark			
74	Sposa *	Y	50 49.66	01 17.59	9J	Finish Mark			
75	Magazine *	Y	50 52.83	01 23.98	9K	Far Windward Mark			
76	Test	R	50 52.59	01 23.45	9L	Far Windward Spreader			
77	Fawley Deep	G	50 50.42	01 19.19	9M	Near Windward Mark			
78	Hook #	G	50 49.52	01 18.30	9N	Near Windward Spreader			
<p># Only used for passing and keeping boats out of channel, not for ordinary rounding. Use of other main channel marks should be minimised</p> <p>Most yellow race marks are seasonal March-November</p> <p>* These marks may be in place all year round</p> <p>Mark codes are mainly in order by longitude from west to east, except Zone 2 is split into Mainland, Middle, and Island Side. Marks added to the list since 2010 may be at the end of their Zones. "Missing" codes are spares.</p>					9P				
					9Q				
					9R				
					9S				
					9T				
					9U				
					9V				
					9W				
					9X				
					9Y				
9Z									

E&OE

Solent Area Marks

01 February 2023

ADDENDUM C - TELEGRAM GROUP

An official Telegram (www.telegram.org) group has been set up for receiving general information from the Race Office and the RC.

If you do not already have the Telegram app installed on your device, please follow the instructions below:

- Apple iPhones – download and install via the App Store.

<https://apps.apple.com/app/telegram-messenger/id686449807>

- Android Phones – download and install via the Google Play Store.

<https://play.google.com/store/apps/details?id=org.telegram.messenger>

To join the Telegram group please use the link or scan the QR Code below:

Telegram Group Link: <https://t.me/+Ln-412lkMhViNDIk>

QR CODE:



ADDENDUM D – NOTICE TO MARINERS NO. 6 OF 2023



NOTICE TO MARINERS

No 06 of 2023

Port of Southampton – Precautionary Area (Thorn Channel)

- 1 **NOTICE IS HEREBY GIVEN** in support of planning for the forthcoming busy season for all users of The Solent that all vessels navigating within the Port of Southampton shall ensure that a vessel **greater than 220 metres in length overall** shall be given a 'clear channel' in the area between the Hook Buoy and the Prince Consort Buoy (hereinafter referred to as 'The Precautionary Area' - (see Chartlet 1)).
The term 'clear channel' is defined as: 'a clear and unimpeded passage ahead of a vessel when transiting the Precautionary Area'.

The term 'clear channel vessel' is defined as: 'a vessel greater than 220 metres in length overall which requires a clear and unimpeded passage ahead when transiting the Precautionary Area'.

Vessels may enter 'The Precautionary Area' maintaining a safe distance astern of a 'clear channel vessel'.

- 2 Two vessels each having a length **greater than 180 metres length overall** shall not pass or overtake each other between Hook Buoy and a line drawn due south of West Bramble Buoy.
- 3 **Moving Prohibited Zone (MPZ)** (See Chartlet 1)

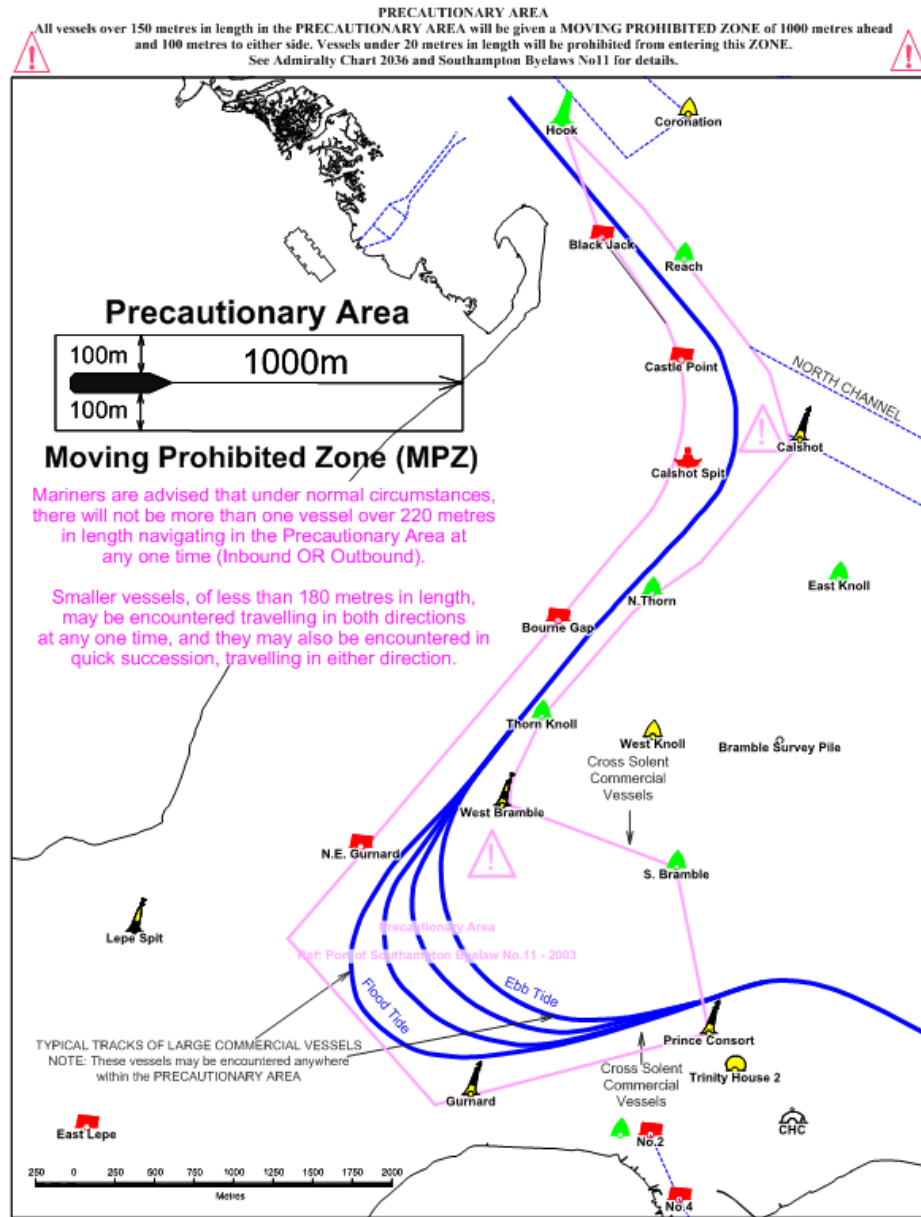
Southampton Harbour Byelaws 2003 Byelaw No 11 enforces the requirement that all vessels **over 150 metres in length overall** when navigating within 'The Precautionary Area' referred to in this notice are automatically allocated a 'Moving Prohibited Zone' (MPZ). The MPZ is defined as an area extending 1000 metres ahead of the bow and 100 metres from the ship's side on both sides of any vessel of **over 150 metres in length overall** whilst it is navigating within 'The Precautionary Area' (See Chartlet 1).

The master of a **small vessel** (defined in Southampton Harbour Byelaws 2003 Byelaw No 3 as any vessel of less than 20 metres in length or a sailing vessel) shall ensure that the vessel does not enter an MPZ.

For the purpose of indicating the presence of the MPZ the master of any vessel of **over 150 metres length overall** shall display on the vessel, where it can best be seen, by day, a black cylinder, and by night, 3 all round red lights in a vertical line.

www.southamptonvts.co.uk

Chartlet 1



4 Tracks followed by Large Vessels

Masters of small vessels are advised that the tracks followed by large vessels within The Precautionary Area will vary considerably depending on the tidal and wind conditions prevailing at the time and the manoeuvring characteristics of the vessels

www.southamptonvts.co.uk