

# NATIONAL SWALLOW CLASS 75<sup>th</sup> ANNIVERSARY CHAMPIONSHIPS

15 - 16 JULY 2023

Organizing Authority (OA)  
Royal Yacht Squadron (RYS)  
Cowes, IoW

## SAILING INSTRUCTIONS (SIs) Incorporating Ammendment One

### 1. RULES

- 1.1. See Notice of Race (NoR) 1 Rules.

### 2. CHANGES TO SIs

- 2.1. Any changes to the SIs will be posted before 0900 on the day it will take effect, except that any change to the Schedule of Races, SI 6.1, will be posted by 2000 on the day before it will take effect.
- 2.2. Changes to an SI may be made on the water using VHF Radio to communicate with competitors, this may be repeated on WhatsApp.

### 3. COMMUNICATIONS WITH COMPETITORS

- 3.1. See NoR 3 Communications.
- 3.2. On the water, the RC may make courtesy and safety broadcasts to competitors on VHF Ch 77.

### 4. CODE OF CONDUCT

- 4.1. Competitors and support persons shall comply with reasonable requests from race officials.

### 5. SIGNALS MADE ASHORE AND AFLOAT

- 5.1. Signals made ashore will be displayed at the RYS Lodge Flagstaff, and may be communicated by VHF and on WhatsApp.
- 5.2. When Flag AP is displayed ashore, "1 minute" is replaced by "not less than 75 minutes". This changes Race Signals AP.
- 5.3. To alert boats that a race will soon begin, the Orange Starting Line Flag will be displayed on the Committee Vessel (CV) with multiple sound signals at least five minutes before a Warning Signal is made.

### 6. SCHEDULE OF RACES

- 6.1. See NoR 9 Schedule.
- 6.2. The RC may alter the Schedule of Races to cater for adverse weather conditions.

### 7. CLASS FLAG

- 7.1. The Class Flag will be Code Flag B:



### 8. RACING AREA

- 8.1. Racing will take place from CASTLE TWO in the Central Solent. The approximate location of CASTLE TWO will be announced on the WhatsApp Briefing, and announced on VHF Ch 77.

## **9. COURSES**

- 9.1. The diagrams in SIs Addendum A show the courses, including the approximate angles between the legs, the order in which marks are to be passed, and the side on which each mark is left.
- 9.2. Soon after the Orange Flag Starting Line Flag is displayed, and before the Warning Signal, the Course Designation, Compass Bearing and Distance to Mark 1 will be displayed on the CV. The Course Designation, Compass Bearing and Distance to Mark 1 will also be announced on VHF, and may be repeated on WhatsApp.
- 9.3. If only a single windward or leeward mark is present, boats shall leave that mark to port before proceeding to the next mark of the course.
- 9.4. In cross-tide wind conditions, after the first leg, subsequent legs of the course may be 'walked' down tide to achieve reasonable leeward and windward legs.
- 9.4.1. Flag W will be displayed at or before the Warning Signal for a race where the course will be 'walked' down-tide.

## **10. MARKS**

- 10.1. Marks 1, 1a, 2p and 2s will be orange inflatable pillar buoys.
- 10.2. The Starting marks will be the CV and a Black Outer Distant Mark (ODM).
- 10.3. The Finishing marks for courses L / LA will be the CV and a Black ODM. The Finishing marks for courses W / WA will be the CV and Mark 1.

## **11. OBSTRUCTIONS**

- 11.1. Boats shall not anchor or kedge in the Cowes Harbour fairway nor within the area denoting power cables and gas pipes between Stone Point and Gurnard Bay, as shown on Admiralty Chart 2040, or within the mining ground area north east of Ryde Sand.
- 11.2. All boats shall comply with Associated British Ports Notice to Mariners No 06 of 2023 giving details of a [Precautionary Area and Moving Prohibited Zone \(MPZ\)](#). The MPZ shall rank as an obstruction for the purposes of RRS 19 and 20.
- 11.3. Whilst racing, boats shall pass to the north of the Cowes Breakwater.

## **12. THE START**

- 12.1. Races will be started by using RRS 26 with the Warning Signal made Five (5) minutes before the Starting Signal.
- 12.2. The Start Line will be between an Orange Staff displaying an Orange Flag on the CV and the course side of the ODM.
- 12.3. If any part of a boat's hull is on the course side of the Starting Line at her starting signal, and she is identified, the RC will attempt to broadcast her sail number on VHF Ch 77 after Flag X has been displayed. Delay or failure to do so shall not be a cause for redress. This changes RRS 62.1(a).

## **13. CHANGE OF THE NEXT LEG OF THE COURSE**

- 13.1. The position of any mark(s) may be adjusted by up to plus or minus 10° (degrees) relative to previous location and up to approximately 200 metres to windward or leeward without signalling Flag C, a direction signal, a length signal or a sound signal. This changes RRS 33.
- 13.2. When a change to the next leg of the course has been signalled, the RC will lay a new mark (or move the finishing line) and remove the original mark as soon as practicable.

## **14. THE FINISH**

- 14.1. The Finishing Line for courses L / LA will be between a staff displaying a Blue Flag on the CV and the course side of the ODM. The Finishing Line for courses W / WA will be between a staff displaying a Blue Flag on the CV and the course side of Mark 1.

## **15. PENALTY SYSTEM**

- 15.1. RRS Rule 44.1 is changed so that the penalty for a boat breaking a rule in Part 2 shall be a One-Turn Penalty (1 tack and 1 gybe).

## **16. TIME LIMITS**

- 16.1. Not applicable.

## **17. HEARING REQUESTS**

- 17.1. Hearing request forms will be available at the Race Office. Protest and requests for redress or reopening shall be delivered to the Race Office within the Protest Time Limit. Contact mobile phone numbers shall be included on the Protest Form.
- 17.2. The Protest Time Limit is 90 minutes after the last boat has finished the last race of the day or the RC signals no more racing today, whichever is later.

- 17.3. Notices will be posted no later than 30 minutes after the Protest Time Limit to inform competitors of the hearings in which they are parties or named as witnesses. Hearings will be held in the Protest Room located at the RYS.
- 17.4. Notices of Protests by the RC, or Protest Committee will be posted to inform boats under RRS 61.1(b).
- 17.5. On the last scheduled day of racing, a request for redress based on a Protest Committee decision shall be delivered no later than 30 minutes after the decision was posted. This changes RRS 62.2.

## **18. SCORING**

- 18.1. See NoR **15 Scoring**.

## **19. SAFETY REGULATIONS**

- 19.1. A boat that retires from a race shall notify the RC as soon as possible on VHF Ch 77, or by hailing an official Event Support Boat or rib.

## **20. REPLACEMENT OF CREW OR EQUIPMENT**

- 20.1. A written request to substitute crew or equipment shall be made on WhatsApp. If the RC concurs, written permission will be granted on WhatsApp.

## **21. EQUIPMENT AND MEASURING CHECKS**

- 21.1. See NoR **10 Equipment Inspection**.

## **22. SUPPLIED BOATS**

- 22.1. Not applicable.

## **23. OFFICIAL VESSELS**

- 23.1. The CV will be Call Sign CASTLE TWO.
- 23.2. Mark-laying vessels will be RYS Ribs.

## **24. SUPPORT TEAMS**

- 24.1. Not applicable.

## **25. TRASH DISPOSAL**

- 25.1. Trash may be placed aboard official or support vessels.

## **26. BERTHING**

- 26.1. Not applicable.

## **27. HAUL-OUT RESTRICTIONS**

- 27.1. See NoR **19 Haul-out Restrictions**.

## **28. DIVING EQUIPMENT AND PLASTIC POOLS**

- 28.1. See NoR **20 Diving Equipment and Plastic Pools**.

## **29. PRIZES**

- 29.1. See NoR **24 Prizes**.

## **30. RISK STATEMENT**

- 30.1. See NoR **22 Risk Statement**.

## **31. INSURANCE**

- 31.1. See NoR **23 Insurance**.

## **32. FURTHER INFORMATION**

- 32.1. RYS Office: See details at the foot of each page.
- 32.2. Chairman NSCA: Mike Wigmore: [nationalswallowclass@gmail.com](mailto:nationalswallowclass@gmail.com)
- 32.3. Other information, see RYS Guest Information Pack [on the ONB](#).

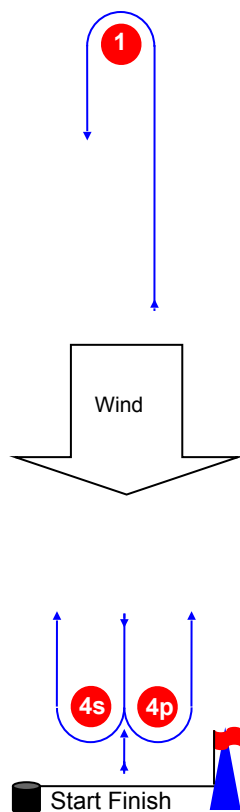
## **ADDENDA:**

- A. Course Illustrations – Windward Leeward.
- B. Solent Chartlet and SCRA Two Character Codes for Racing Marks.
- C. Schedule of Racing and Social Programme.
- D. QR Code to join WhatsApp.

## ADDENDUM A

### Course Illustrations – Windward Leeward

# L



#### Course: Leeward finish

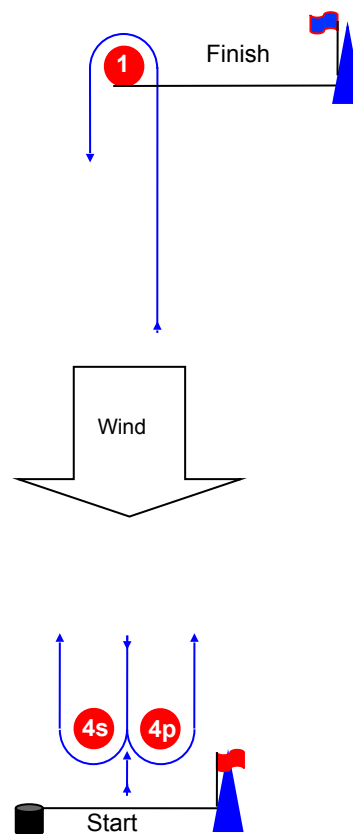
Signal Mark Rounding Order

L2 Start – 1 – 4s/4p – 1 – Finish

L3 Start – 1 – 4s/4p – 1 – 4s/4p – 1 – Finish

L4 Start – 1 – 4s/4p – 1 – 4s/4p – 1 – 4s/4p – 1 – Finish

# W



#### Course: Windward Finish

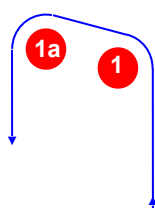
Signal Mark Rounding Order

W2 Start – 1 – 4s/4p – Finish

W3 Start – 1 – 4s/4p – 1 – 4s/4p – Finish

W4 Start – 1 – 4s/4p – 1 – 4s/4p – 1 – 4s/4p – Finish

# LA / WA



#### Course: Windward/leeward with offset mark 1a

Signal Mark Rounding Order

LA2 Start – 1 – 1a – 4s/4p – 1 – 1a – Finish

LA3 Start – 1 – 1a – 4s/4p – 1 – 1a – 4s/4p – 1 – 1a – Finish

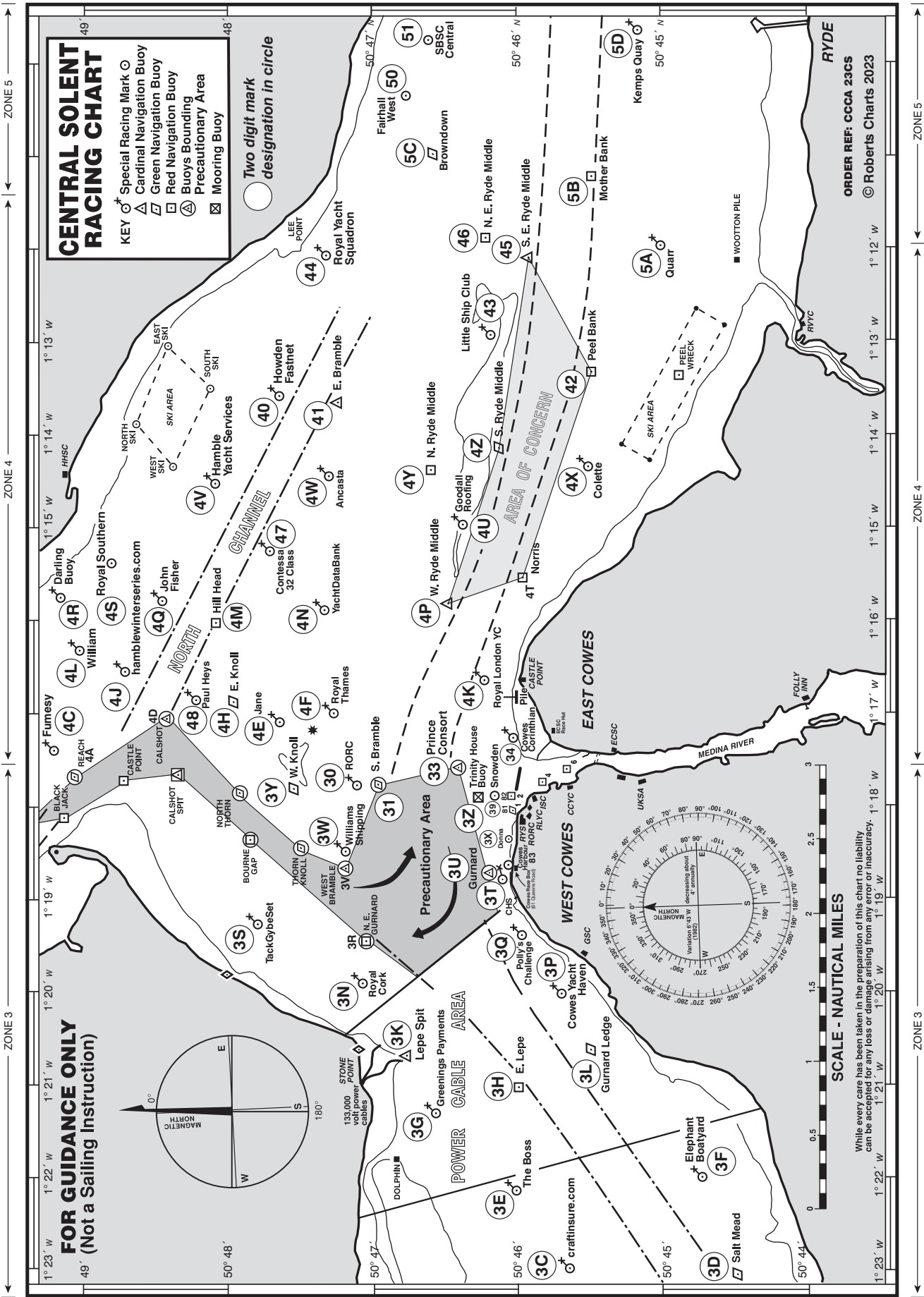
LA4 Start – 1 – 1a – 4s/4p – 1 – 1a – 4s/4p – 1 – 1a – 4s/4p – 1 – 1a – Finish

WA2 Start – 1 – 1a – 4s/4p – Finish

WA3 Start – 1 – 1a – 4s/4p – 1 – 1a – 4s/4p – Finish

WA4 Start – 1 – 1a – 4s/4p – 1 – 1a – 4s/4p – 1 – 1a – 4s/4p – Finish

SOLENT CHARTLET WITH SCRA TWO CHARACTER CODE FOR RACING MARKS



## ADDENDUM C

### SCHEDULE OF RACING AND SOCIAL PROGRAMME

Date <i>HW Portsmouth</i>	Time	Event
Friday 14 July	1745 -1830	Registration. RYS Pavilion.
	1845	RO's Briefing. RYS Pavilion.
	1915	Opening Reception. RYS Pavilion. Dress: Coat and Tie.
	1945 for 2000	75 <sup>th</sup> Anniversary Dinner. RYS Platform. Dress: Coat and Tie for Gentlemen. Ladies dress to reflect.
Saturday 15 July	0915	RO's WhatsApp Briefing.
<i>1100 BST 4.1m</i>	0930	Launches depart RYS Haven.
	1100	First Warning Signal.
		Two subsequent races ASAP after the previous Race.
	1930	BBQ with Band. RYS Pavilion. Dress: Smart Casual.
Sunday 16 July	0845	RO's WhatsApp Briefing.
<i>1150 BST 4.2m</i>	0900	Launches depart RYS Haven.
	1030	First Warning Signal.
		One subsequent race(s) ASAP after the previous Race.
	1300	Last Warning Signal.
	1530	Prizegiving. RYS Platform. Dress: Yachting.

## ADDENDUM D

### QR CODE TO JOIN WHATSAPP

We have set up an official WhatsApp group for receiving general information from the Race Office.

If you do not already have WhatsApp installed on your device, please follow the instructions below:

- Apple iPhones – download and install via the App Store.  
<https://apps.apple.com/gb/app/whatsapp-messenger/id310633997>
- Android Phones – download and install via the Google Play Store.  
<https://play.google.com/store/apps/details?id=com.whatsapp>

To join the WhatsApp group [please use the link](#) or scan the QR Code below:

