



# 2023 J/24 North American Championship

August 8 – 13, 2023

Organizing Authority (OA):

Sandusky Sailing Club (SSC), US J/24 Class Association,  
and the International J/24 Class Association (IJCA)  
Sandusky, Ohio, USA



## SAILING INSTRUCTIONS

The notation '[NP]' in a rule in the SI means that instruction is not grounds for protest or a request for redress by a boat. This changes RRS 60.1. All times are US Eastern Daylight Time.

### 1 RULES

- 1.1 The event is governed by the rules as defined in the *Racing Rules of Sailing* (RRS).
- 1.2 In accordance with RRS G3, a boat chartered or loaned for this event may carry national letters or a sail number in contravention of the class rules.
- 1.3 RRS Appendix T, Arbitration, shall apply as modified by SI 15.1.
- 1.4 See the notice of race (NoR) for additional documents and rules that apply.

### 2 CHANGES TO SAILING INSTRUCTIONS

Any change to the sailing instructions shall be posted not less than two (2) hours prior to the first scheduled race on the day it shall take effect except that any change to the schedule of races will be posted by the later of 1800 or the protest time limit on the day before it will take effect.

### 3 COMMUNICATIONS WITH COMPETITORS

- 3.1 Notices to competitors will be posted on the official notice board on YachtScoring ([https://www.yachtscoring.com/notice\\_board\\_summary.cfm?eID=15584](https://www.yachtscoring.com/notice_board_summary.cfm?eID=15584)).
- 3.2 A competitors' meeting will be held at 1800 hrs on Wednesday, August 9 on the lawn at SSC.
- 3.3 Any questions regarding these SIs shall be submitted in writing to the race committee (email preferred to [mbounds@comcast.net](mailto:mbounds@comcast.net)). The questions and any answers will be posted on the official notice board as soon as practicable.
- 3.4 [DP] Except in an emergency, a boat shall not make voice or data transmissions and shall not receive voice or data communication that is not available to all boats. This shall apply from the time she leaves her mooring for the first race of the day until racing for the day is complete.
- 3.5 [NP] On the water, the race committee intends to monitor and communicate with competitors via VHF radio on **channel 72**. This includes announcements and confirmation of race committee signals before, during, and after racing. This may also include other information such as the location of the starting area, countdown to the start, OCS hails, general recalls, and postponements.

### 4 CODE OF CONDUCT

[DP] Competitors and support persons shall comply with reasonable requests from race officials.

### 5 SIGNALS MADE ASHORE

- 5.1 Signals made ashore will be displayed from the flagpole southeast of the SSC clubhouse.
- 5.2 When flag AP is displayed ashore, "1 minute" is replaced with "not less than 60 minutes" in race signals AP
- 5.3 The designated course area (flag Oscar for the outside course area; flag India for the inside course area) will be signaled ashore no later than two (2) hours prior to the first warning signal of the day.

## 2023 J/24 North American Championship Sailing Instructions

### 6 SCHEDULE OF RACES

6.1 The racing schedule is as follows:

Day	Date	Time	Event/Activity
Wednesday	August 9	1000 – 1800	Check-in/Inspection/Crew Weigh-in
		1400	Practice Race
		1800	Competitors Meeting, All Boats must be afloat
Thursday	August 10	0800 – 0830	Crew Weigh-in*
		1030	Warning for the first race of the day
Friday	August 11	0800 – 0830	Crew Weigh-in*
		1030	Warning for the first race of the day
Saturday	August 12	0800 – 0830	Crew Weigh-in*
		1030	Warning for the first race of the day
Sunday	August 13	0800 – 0830	Crew Weigh-in*
		1030	Warning for the first race of the day
		1400	No warning signal after this time

\*These scheduled crew weigh-ins are only for technical committee approved replacement of crews specified per NOR 1.4(a).

6.2 To alert boats that a race or sequence of races will begin soon, the orange starting line flag will be displayed with one sound at least five minutes before a warning signal is made.

6.3 Ten (10) races are scheduled over four (4) consecutive days.

6.4 No more than four (4) races will be sailed per day.

### 7 CLASS FLAG

The class flag is a white flag with a blue J/24 class insignia.

### 8 RACING AREA

See Addendum B for the location of the India (inside) and Oscar (outside) racing areas.

### 9 THE COURSES

9.1 Courses will be windward/leeward with five legs (WA3) or four legs (LA2) as shown in SI Addendum A. The distance between mark 1 and mark 1a will not be regarded as a leg of the course.

9.2 [NP] No later than the warning signal, the race committee signal vessel will display the course designator, the approximate compass bearing, and the distance of the first leg. The race committee will also broadcast this information. Failure to broadcast or to receive this information shall not constitute grounds for granting redress.

9.3 An offset mark (designated mark 1a) will be used in conjunction with mark 1. The offset mark will be placed to the left of the weather mark (looking up wind) at approximately a right angle to the weather leg.

9.4 Mark 2 will be a gate consisting of two marks (mark 2p and mark 2s). If the gate is not present, mark 2 shall be rounded to port. Except when there is a change of course, the gate will be positioned approximately to windward of the race committee signal vessel at a distance to the discretion of the race committee. The gate may be laid after the starting signal.

9.5 Course WA3 course will not be shortened to less than four legs in length, and course LA2 will not be shortened to less than three legs in length.

### 10 MARKS

10.1 Mark 1 will be a **yellow** inflatable mark.

10.2 Mark 1a (the offset mark) will be a smaller, **white** sphere.

10.3 Marks 2S and 2P (the gate) will be **orange** MarkSetBots or inflatable marks of the same color. If one of the gate marks is missing, the remaining mark shall be left to port.

10.4 The starting mark will be an anchored vessel displaying an **orange** flag or a **yellow** MarkSetBot.

10.5 The finishing mark will be a **yellow** MarkSetBot or a **green** inflatable mark.

10.6 New marks, as provided in instruction 13 will be **orange** inflatable marks.

## 2023 J/24 North American Championship Sailing Instructions

- 10.7 [NP] MarkSetBots are robotically controlled marks. If robotic marks are used, routine movement of these marks on the course will not be grounds for redress. This includes marks returning to station after having been pushed away by a competitor, and collisions with marks that do not cause damage. *This changes RRS 60.1(b) and 62.1(a). RRS 31 still applies.*

### 11 OBSTRUCTIONS

There are no areas that are obstructions. Boats should be mindful of commercial traffic transiting the Sandusky harbor ship channel. Interference with commercial traffic may result in a protest by the RC or Protest Committee under the IRPCAS regulations.

### 12 THE START

- 12.1 The starting line will be between a staff displaying an **orange** flag on the signal vessel and the course side of the mark as described in instruction 10.4.
- 12.2 If any part of a boat's hull is on the course side of the starting line at her starting signal and she is identified, the race committee will attempt to hail her bow number or sail number. Failure to hail her number, failure of her to hear such a hail, or the order in which boats are hailed will not be grounds for a request for redress. *This changes RRS 60.1(b).*
- 12.3 RRS 30.4 is changed to permit the RC to display the sail number or bow number of BFD boats after a general recall or abandonment.
- 12.4 A boat that does not start within six (6) minutes after her starting signal will be scored Did Not Start without a hearing. *This changes RRS 35, 63.1, A5.1 and A5.2.*

### 13 CHANGE OF THE NEXT LEG OF THE COURSE

- 13.1 To change the next leg of the course when it is ended by MarkSetBot(s), and the adjustment is less than five (5) degrees or length is changed +/- 0.05 nm, the existing marks will be moved into position and no change signal will be made. *This changes RRS 33.*
- 13.2 To change the next leg of the course and the adjustment is more than five (5) degrees or length is changed +/- 0.05 nm, the existing marks will be moved into position and a signal will be made in accordance with RRS 33.

### 14 THE FINISH

The finishing line shall be between a staff displaying a **blue** flag on the signal vessel and the course side of the mark as described in instruction 10.5.

### 15 PENALTY SYSTEM

- 15.1 RRS Appendix T will apply, as modified below:
- A boat may accept a post-race scoring penalty of 30% only until the end of the protest time limit by completing a Penalty Acceptance Form available at the protest desk. *This changes RRS T.1.(a) and T.1.(b).*
  - A boat accepting a post-race scoring penalty after an arbitration hearing shall be penalized 40%. *This changes RRS T.1.(b).*
- 15.2 The first two sentences of RRS 44.1 are changed to: "A boat may take a one-turn penalty when she may have broken one or more rules of Part 2 or RRS 31 in an incident while racing. However, when she may have broken one or more rules of Part 2 while in the zone around a mark other than a starting mark, her penalty shall be a two-turns penalty."
- 15.3 Except if the course is shortened to finish at the windward mark, penalties while in the zone of the windward mark or on the offset leg may be delayed and taken as soon as possible on the downwind leg. *This changes RRS 44.2*

### 16 TIME LIMITS

- 16.1 The Target Time, Race Time Limit, and the Finishing Window are shown in the table below:

Target Time	Race Time Limit	Finishing Window
60 - 80 minutes	105 minutes	30 minutes

## 2023 J/24 North American Championship Sailing Instructions

- 16.2 Failure to meet the Target Time will not be grounds for redress. *This changes RRS 62.1(a).*
- 16.3 The Finishing Window is the time for boats to finish after the first boat sails the course and finishes. Boats failing to finish within the finishing window after the first boat in a race sails the course and finishes and not subsequently retiring, penalized, or given redress will be scored TLE, "Time Limit Expired." The score for TLE will equal two more points than the place of the last boat to finish within the time limit, but not worse than DNF. *This changes RRS 35, 63.1, A5.2 and A10.* The RC will lower the blue finish flag with a long sound when the finishing window is closed.

### 17 HEARING REQUESTS

- 17.1 Hearing request forms are available at the protest desk in the SSC clubhouse.
- 17.2 The protest time limit is sixty (60) minutes after the race committee signal vessel docks after the last race of the day or the race committee signals no more racing today, whichever is later. The same time limit applies to protests by the RC, TC and jury about incidents they observe in the racing area and to requests for redress. *This changes rules 61.3 and 62.2.*
- 17.3 Notices will be posted no later than 30 minutes after the protest time limit to inform competitors of hearings in which they are parties. Parties are responsible for notifying their witnesses. Hearings will be held in the protest room, inside the SSC clubhouse, beginning at the time posted.
- 17.4 Notices of protests by the race committee, technical committee or jury will be posted to inform boats under RRS 61.1(b).
- 17.5 When an international jury is constituted in accordance with RRS Appendix N, its decisions will be final as provided in RRS 70.5.

### 18 SCORING

- 18.1 Four (4) races are required to be completed to constitute a championship.
- 18.2 In accordance with RRS A2.1, when fewer than five races have been completed, a boat's series score will be the total of her race scores. When five or more races have been completed, a boat's series score will be the total of her race scores, excluding her worst score.

### 19 SAFETY REGULATIONS

- 19.1 [NP][DP] A boat that retires from a race or does not intend to compete in a race or returns to the racing area shall notify the race committee as soon as possible.
- 19.2 [NP][DP] All boats shall check-in with the Race Committee boat displaying the "L" flag before the first warning signal of the day. Each boat shall sail past the committee boat on starboard tack and hail her bow number until acknowledged by the Race Committee.

### 20 REPLACEMENT OF CREW OR EQUIPMENT

- 20.1 Crew replacements are limited to those allowed by NoR 1.4 and class rule H.4.3. The Jury may approve a crew substitution during the event in cases of illness or emergency.
- 20.2 Even if replacement or crew substitution is allowed, the number of crew shall not change during the event.
- 20.3 Substitution of damaged or lost equipment will not be allowed unless authorized by the technical committee. Requests for substitution shall be made to the technical committee at the first reasonable opportunity. Substitution of spinnaker poles or rudders with spares that have been measured and carry event limitation marks for this event may be done without notification.

### 21 EQUIPMENT AND MEASUREMENT CHECKS





- 21.1 On the water, a boat may be instructed by a member of the race committee or the technical committee to proceed immediately to a designated area for inspection by the technical committee.
- 21.2 Ashore, equipment may be inspected or measured at times specified in the class rules, the notice of race, or at any time by a member of the technical committee.

### 22 EVENT ADVERTISING

[NP][DP] Boats shall display event advertising that is supplied by the organizing authority. Such advertising shall be installed according to the instructions supplied with them and shall remain in place for the duration of the regatta.

**23 OFFICIAL VESSELS**

Official Vessels shall be marked as follows:

VESSEL	FLAG
RC (Anchor may be red or gold)	
Jury (Flag Juliet or US Sailing "Judges" flag)	
Technical Committee/Measurement Other official vessels	
Safety	

**24 SUPPORT VESSELS**

24.1 [NP][DP] Support vessels shall comply with NoR 14.

24.2 [NP][DP] Support vessels and support persons shall remain no less than 150m from the race course from the warning signal until all boats have finished or retired from the last race of the day or the race committee has signaled Race Signal AP over H.

**25 [NP][DP] AFLOAT AND HAUL-OUT RESTRICTIONS**

Boats shall be afloat with rudders mounted by 1800 on Wednesday, August 8 and shall not be hauled out during the event except with, and according to the terms of prior written permission of the technical committee.

**26 [DP] DIVING EQUIPMENT, PLASTIC POOLS, AND OTHER PROHIBITED ACTIONS**

26.1 Underwater breathing apparatus and plastic pools or their equivalent shall not be used between the time the boat is afloat and the end of the event. The hull may be cleaned at any time by swimming or keelhauling using ropes, cloth or other equipment designed for that use.

26.2 Careening by any means for the purpose of cleaning or inspecting the hull is prohibited during the

26.3 Use of dehumidifiers or electric fans are prohibited at all times while boats are afloat.

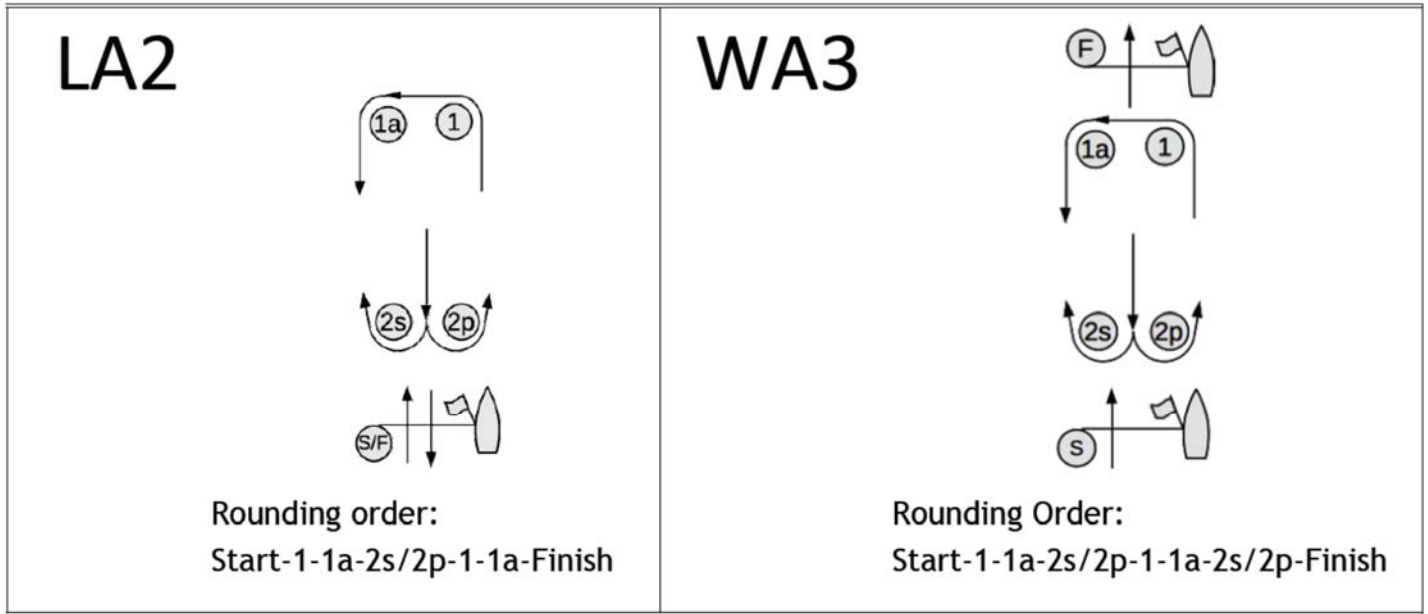
**27 PRIZES**

Prizes will be awarded in accordance with the NoR.

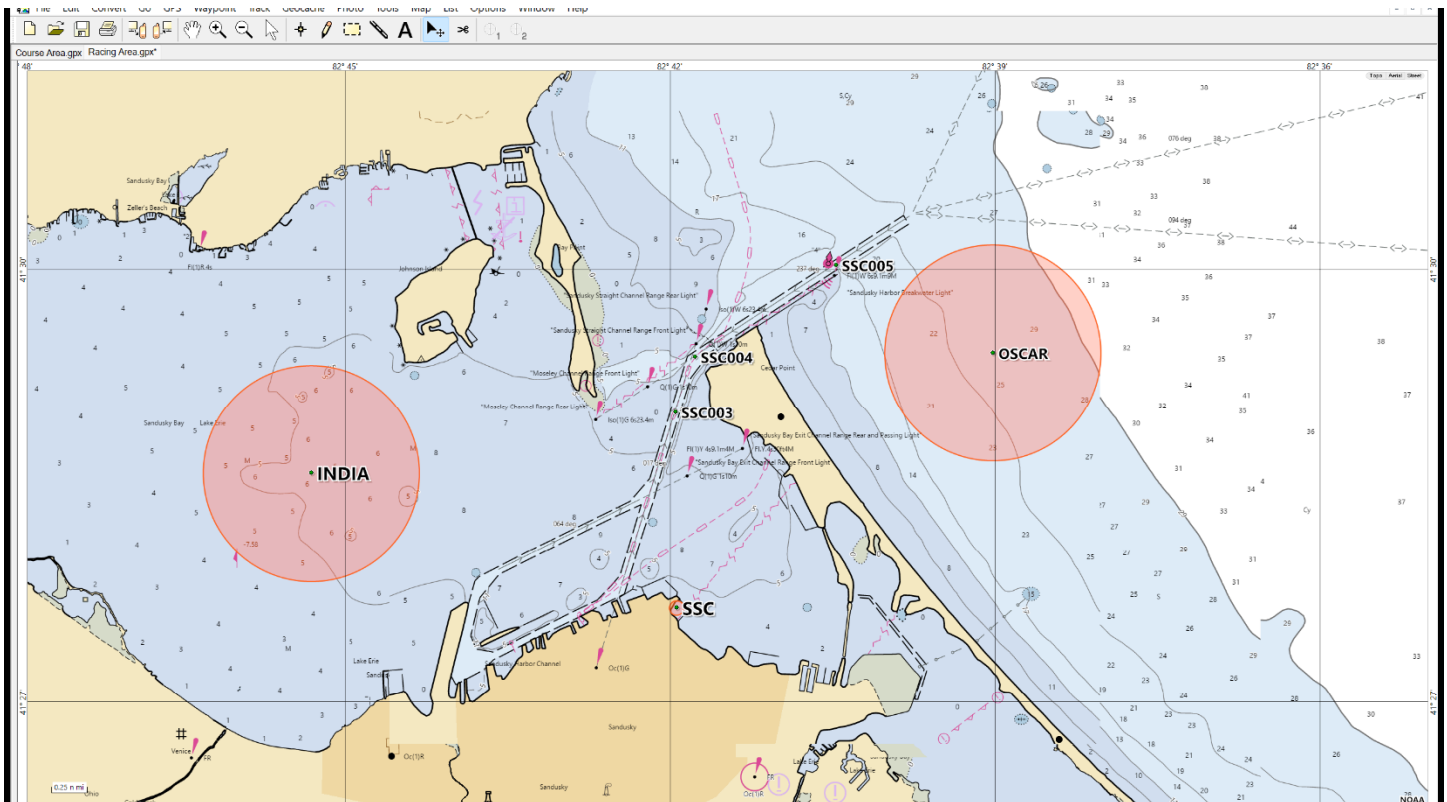
**28 RISK STATEMENT**

RRS 3 states: 'The responsibility for a boat's decision to participate in a race or to continue to race is hers alone.' By participating in this event each competitor agrees and acknowledges that sailing is a potentially dangerous activity with inherent risks. These risks include strong winds and rough seas, sudden changes in weather, failure of equipment, boat handling errors, poor seamanship by other boats, loss of balance on an unstable platform and fatigue resulting in increased risk of injury. **Inherent in the sport of sailing is the risk of permanent, catastrophic injury or death by drowning, trauma, hypothermia, or other causes.**

**ADDENDUM A**  
**COURSE DIAGRAMS**



**ADDENDUM B**  
**RACING AREAS**



Center Locations:

India – N41 28.582 W082 45.315

Oscar – N41 29.419 W082 39.022