

SAILING INSTRUCTIONS

The notation '[DP]' in a rule in the notice of race (NoR) or sailing instructions (SIs) means that the penalty for a breach of that rule may, at the discretion of the protest committee, be less than disqualification. The notation '[NP]' in a rule of the NoR or SIs means that a boat may not protest another boat for breaking that rule. This changes RRS 60.1(a).

All times are Atlantic Standard Time (GMT -4)

1 RULES

- 1.1 The event is governed by the rules as defined in *The Racing Rules of Sailing*.
- 1.2 Boats are reminded that all requirements of the Notice of Race apply (see RRS definition of 'rule') even when not repeated in these SIs.
- 1.3 World Sailing (WS) Appendix WP, Rules for Racing Around Waypoints, shall apply. WS Appendix WP can be found at: [https://www.sailing.org/tools/documents/AppendixWPRulesforWaypointsMay2021-\[27276\].pdf](https://www.sailing.org/tools/documents/AppendixWPRulesforWaypointsMay2021-[27276].pdf)
- 1.4 Between 1830 and 0530 or when the visibility is less than 1 nautical mile, WS Appendix RV, Reduced Visibility Racing Rules, shall apply. WS Appendix RV is available at: [https://www.sailing.org/tools/documents/AppendixRVReducedVisibilityRacingRulesJanuary2021-\[27331\].pdf](https://www.sailing.org/tools/documents/AppendixRVReducedVisibilityRacingRulesJanuary2021-[27331].pdf)

2 COMMUNICATIONS WITH COMPETITORS

- 2.1 Notices to competitors will be posted on the official notice board located at <https://yachtscoring.com/emenu.cfm?eID=15463>.
- 2.2 The race office is online and can be reached at telephone +1.246.231.8856 or email at caribbeanorc@gmail.com.
- 2.3 The OA intends to create a WhatsApp group for ease of communicating with the boats and the public. Details will be posted on the noticeboard.
- 2.4 [DP] Rule 41(c) is replaced by: A boat shall not receive help from any outside source, except help in the form of information which is freely available to all boats, which shall include navigational, weather, tide or current information from any source which is available to all boats whether or not by payment of a fee or subscription, but shall not include information gathered or the subject of interpretation by, or any advice received from, any source not on board the boat and which is specific to the boat and her situation.

3 CHANGES TO SAILING INSTRUCTIONS

- 3.1 Any change to the sailing instructions will be posted before 0800 on Tuesday 16 May.

4 CODE OF CONDUCT

- 4.1 [DP] Competitors and support persons shall comply with reasonable requests from race officials.

5 SCHEDULE OF RACES

5.1

Date	Time	
Monday, 8 May	1700	Registration closes, Rating Deadline, CSA Sail Configuration Deadline, Scratch List available online
Friday, 12 May	1700	Skippers and Weather Briefing via Zoom, connection info to be posted by 1600
Tuesday, 16 May	0955	Warning Signal, follow online via YB Tracking app
Saturday, 20 May	1800	Prizegiving via Zoom, connection info to be posted by 1600

6 RACING AREA, COURSES, MARKS, OBSTRUCTIONS

- 6.1 The racing area, courses, and marks are described in SI Attachment A.

7 TRACKING AND MARK LOGGING

- 7.1 Boats sailing Course A are required to have AIS Transponders (NoR 2.5(a)). The AIS transponder shall be active at all times from boat's warning signal until it returns to harbor after the race.
- 7.2 Each boat shall maintain and submit a Course Log Form during the race and submit it to the race office by email no later than the protest time limit. The Course Log Form will be available on the notice board no later than the Skippers' Meeting. The Course Log Form shall be completed in accordance with the WS Appendix WP Guidance on Racing Around Waypoints. The form shall include:
- (a) The boat's GPS location at the time of their starting signal.
 - (b) The time and GPS location at which the boat passes through each waypoint gate of their course.
 - (c) The boat's finish time and GPS location when she crosses the start/finish waypoint gate after completing the course.
- 7.3 Boats are encouraged to post their GPS locations and the times at which they pass through each waypoint gate via WhatsApp (see SI 2.3 above).

8 THE START

- 8.1 The start will be in accordance with RRS 26, changed such that there will be no audible or visual starting signals. Times will be based on Atlantic Standard Time using GPS. The time of the warning signal will be 0955, the time of the preparatory signal will be 0956, the time of the starting signal will be 1000.
- 8.2 A boat starting later than 1100 on Tuesday, 16 May, shall contact the race office before starting.
- 8.3 The starting line will be the waypoint gate specified in SI Attachment A for the boat's declared start/finish island.
- 8.4 OCS Time Penalty
- (a) A boat's GPS tracking location shall not be on the course side of her starting waypoint gate at her starting signal. If a boat breaks this rule, she shall be penalized by the race committee without a hearing. RRS 29.1 does not apply. This changes RRS A5.1.
 - (b) The penalty for breaking SI 8.4(a) shall be 20 minutes added to the boat's elapsed time.
 - (c) In accordance with WS Test Rule DR21-01 ([https://www.sailing.org/tools/documents/DR2101AlternativeStartingPenaltyDevelopmentRule-\[27257\].pdf](https://www.sailing.org/tools/documents/DR2101AlternativeStartingPenaltyDevelopmentRule-[27257].pdf)), the definition of "start" is changed as follows: "Start - A boat starts when her hull having been entirely on the pre-start side of the starting line, and having complied with rule 30.1 if it applies, any part of her hull crosses the starting line from the pre-start side to the course side either: (a) at or after her starting signal, or (b) during the last 2 minutes before her starting signal."

9 THE FINISH

- 9.1 The finishing line will be the waypoint gate specified in SI Attachment A for the boat's declared start/finish island.

10 PENALTY SYSTEM

- 10.1 RRS 44.1 and 44.2, One-Turn and Two-Turns Penalties, apply except when WS Appendix RV, Reduced Visibility Racing Rules, applies (see SI 1.4 and 10.2).
- 10.2 When WS Appendix RV applies, RRS 44.3, Scoring Penalty, applies, modified as follows:
- (a) RRS 44.3(a) is replaced with "A boat accepting the penalty shall notify the other boat(s) via VHF channel 16 at the first reasonable opportunity after the incident. A yellow flag is not required."
 - (b) RRS 44.3(b) is replaced with "A boat accepting the penalty shall inform the race office by phone or email (see SI 2.2 of the incident, including the identity of the other boat involved, no later than the protest time limit."
- 10.3 After a hearing, the protest committee may impose scoring or time-based penalties less than disqualification. This changes RRS 64.2.

11 HEARING REQUESTS

- 11.1 The protest time limit is 4 hours after a boat finishes or, after withdrawing from the race, returns ashore. When this time limit occurs between 2200 and 0900 hours, the time limit is extended to 0900.
- 11.2 Hearing request forms shall be filed by email to the race office (see SI 2.2). Forms are available online on the notice board.
- 11.3 The protest committee intends to schedule and conduct hearings via tele- or video- conferencing. The protest committee will post a notice to inform competitors of the schedule and location of hearings in which they are parties or named as witnesses.
- 11.4 The race committee will post a list of OCS time penalties no later than 24 hours after the start of the race.

- 11.5 After a hearing, the protest committee may impose scoring or time-based penalties less than disqualification. This changes RRS 64.2.
- 11.6 The right of appeal from a decision of a protest committee that is an international jury is denied as provided in rule 70.5.
- 11.7 RRS 62.2(a) and 66.2(a) are changed such that "on the last scheduled day of racing" is replaced with "after 1830 on Saturday, 20 May".

12 SCORING

- 12.1 RRS Appendix A, Scoring, will apply, modified as follows.
- 12.2 One race is required to be completed to constitute a series.
- 12.3 For each course, a boat's finish place in her class will be based upon her corrected time (as determined by her class rules) regardless of her starting/finishing island. This changes RRS A3.
- 12.4 Across all courses, a boat's finish place in her class will be based upon her corrected time per mile (her corrected time divided by the length of her course) regardless of her starting/finishing island. This changes RRS A3.

13 SAFETY REGULATIONS

- 13.1 [DP] A boat that retires from a race shall notify the race office (see SI 2.2) at the first reasonable opportunity. [Promptly after returning to shore, the boat shall complete a retirement declaration form, which is available on the notice board, and return the form to the race office by email.

SI Attachment A - Courses

A1 Course Overview

A1.1 There are three course options detailed in A2 and A3, and first start/finish gates:

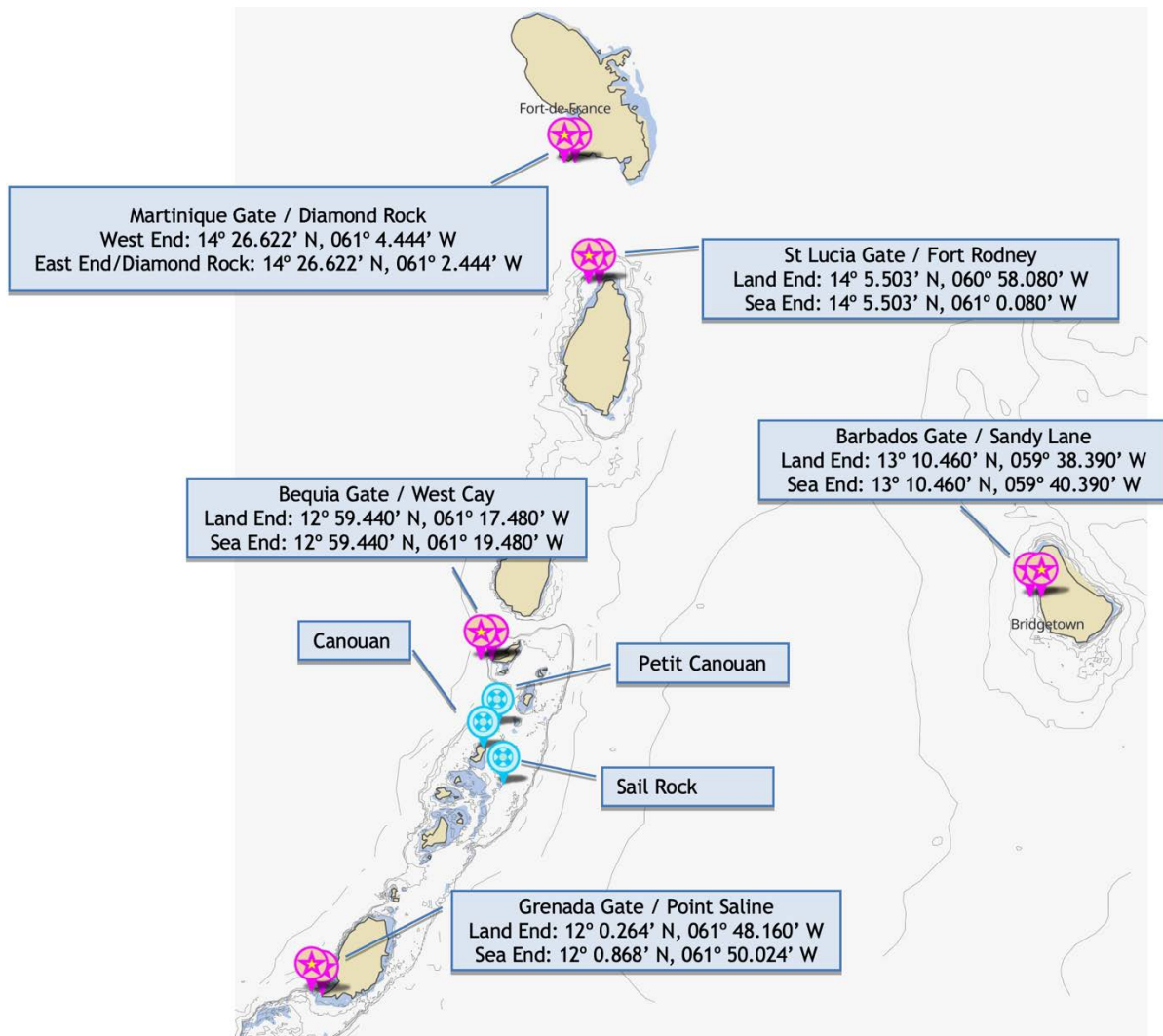
- (a) Course A - Windward 500, a clockwise loop around the island group of St Lucia, Barbados, Grenada, Bequia, St Lucia, and Diamond Rock off Martinique (distance 424 nm)
- (b) Course B - Windward Sprint, a clockwise loop between Bequia and Barbados (distance 219 nm)
- (c) Course C - Windward Rally, a down-and-back course with Diamond Rock off Martinique at the north end, and along the western sides of St Lucia, Bequia, and Grenada (distance 314 nm)

A1.2 Boats will start at the gate of their start/finish island, sail their chosen course, and finish at the same gate from which they started.

A1.3 All boats in the same class, sailing the same course will be scored together regardless of their start/finish island.

A2 Gate and Mark Locations

A2.1 The chart below shows the approximate locations of the gates and marks, and the latitude and longitude of the land- and sea-end of each gate.



A3 Course Details by Start/Finish Island

Course A - Barbados

	Start at Barbados Gate, southbound
	Grenada Gate
Then pass through, in order	Bequia Gate
	St Lucia Gate
	Martinique Gate (Diamond Rock to starb'd)
Finish at Barbados Gate, southbound	

Course B - Barbados

	Start at Barbados Gate, southbound
	Pass to starb'd Sail Rock
	Pass to port Canouan
	Pass to port Petit Canouan
	Pass through Bequia Gate, northbound
Finish at Barbados Gate, southbound	

Course A - Grenada

	Start at Grenada Gate, northbound
	Bequia Gate
Then pass through, in order	St Lucia Gate
	Martinique Gate (Diamond Rock to starb'd)
	Barbados Gate
Finish at Grenada Gate, northbound	

Course C - Grenada

	Start at Grenada Gate, northbound
	Bequia Gate
	St Lucia Gate
Then pass through, in order	Martinique Gate/Diamond Rock to starb'd
	St Lucia Gate
	Bequia Gate
Finish at Grenada Gate, southbound	

Course A - Bequia

	Start at Bequia Gate, northbound
	St Lucia Gate
Then pass through, in order	Martinique Gate (Diamond Rock to starb'd)
	Barbados Gate
	Grenada Gate
Finish at Bequia Gate, northbound	

Course B - Bequia

	Start at Bequia Gate, northbound
	Barbados Gate, southbound
Then pass through	Sail Rock to starb'd
	Canouan to port
	Petit Canouan to port
Finish at Bequia Gate, northbound	

Course C - Bequia

	Start at Bequia Gate, northbound
	St Lucia Gate
Then pass through, in order	Martinique Gate (Diamond Rock to starb'd)
	St Lucia Gate
	Bequia Gate
	Grenada Gate (sea end to starb'd)
Finish at Bequia Gate, northbound	

Course A - St Lucia

Start at	St Lucia Gate, northbound
	Martinique Gate (Diamond Rock to starb'd)
Then pass through, in order	Barbados Gate
	Grenada Gate
	Bequia Gate
Finish at	St Lucia Gate, northbound

Course C - St Lucia

Start at	St Lucia Gate, northbound
	Martinique Gate (Diamond Rock to starb'd)
Then pass through, in order	St Lucia Gate
	Bequia Gate
	Grenada Gate (sea end to starb'd)
	Bequia Gate
Finish at	St Lucia Gate, northbound

Course A - Martinique

Start at	Martinique Gate, southbound
	Barbados Gate
Then pass through, in order	Granada Gate
	Bequia Gate
	St Lucia Gate
Finish at	Martinique Gate, northbound

Course C - Martinique

Start at	Martinique Gate, southbound
	St Lucia Gate
Then pass through, in order	Bequia Gate
	Grenada Gate (sea end to starb'd)
	Bequia Gate
	St Lucia Gate
Finish at	Martinique Gate, northbound