



# SAILING INSTRUCTIONS

2022 NEWPORT FLEET 169 WOMEN'S REGATTA

August 6-7, 2022

Hosted by

The International Yacht and Athletic Club (IYAC)

Sail Newport

&

The Rhode Island Sailing Events Commission

## 1. RULES

- 1.1. The regatta will be governed by the rules as defined in The Racing Rules of Sailing (RRS) for 2021-2024, and current applicable Thistle class rules.
- 1.2. If there are any discrepancies between the Notice of Race and the Sailing Instructions, the Sailing Instructions take precedent.

## 2. NOTICES TO COMPETITORS

- 2.1 Changes to these Sailing Instructions will be posted by 1000 on the day they will take effect, except that any change to the schedule of races will be posted no later than 1800 on the day before it will take effect. The Official Notice Board will be online on the 2022 Newport Thistle Fleet 169 Women's Regatta page at [yachtscoring.com](http://yachtscoring.com)

## 3. SIGNALS MADE ASHORE

- 3.1. Signals made ashore will be displayed from Thistle 2026.
- 3.2. The display of Flag "AP" accompanied by two sound signals means the start of racing is postponed. The lowering of Flag "AP" on shore with one sound means the Warning Signal for the next race shall be made in not less than 60 minutes. This changes RRS Race Signal "AP" relative to signals made ashore only.

## 4. CHANGES TO INSTRUCTION ON THE WATER

- 4.1. If additional changes/instructions are needed to be conveyed to competitors on the water prior to the start, code flag 'L' will be hoisted while RC is anchored. Competitors are requested to tune to VHF channel 72, and/or sail by the signal boat for verbal instructions.

## 5. SCHEDULE

- 5.1 Friday August 5, 5:30pm - Registration, Check in and pizza at the IYAC.
- 5.2 Saturday August 6, 9:30am - Skippers meeting, Sail Newport Boat Park.
- 5.3 Saturday August 6, 11:00am - First Race, rendezvous between Goat and Rose Island.
- 5.4 Saturday August 6, 6:30pm - Social event, location to be announced.
- 5.5 Sunday August 7, 10:30am – First Race, rendezvous between Goat and Rose Island. No start after 3:00pm.

## 6. CLASS FLAGS

- 6.1 Class flag will be flown from the signal boat.

## 7. RACING AREA

- 7.1 The primary race area will be located between Rose Island and Goat Island approximately 0.5 nm north of Fort Adams
- 7.2 Secondary race area if needed will be in the vicinity of Potters Cove adjacent to Conanicut Island north of the Newport Pell Bridge.
- 7.3 The racing area will be confirmed at the skippers meeting.
- 7.4 Boats may be led to another racing area by hosting code flag 'L'.

## 8. THE COURSES

- 8.1 The set courses (see Appendix A) will be windward leeward designated by displaying the letter "W" followed by a number indicating the number of legs on the Race Committee Signal Boat placard. (Examples: "W2" is windward / leeward, "W3" is windward / leeward / windward, and "W4" is windward / leeward / windward / leeward.) All marks to be left to port.
- 8.2 The leeward mark will be the pin end of the starting line.
- 8.3 The finish line will be between the orange flag on the signal boat, an orange inflatable mark, or a yellow inflatable ball, finishing in the direction of the last leg.
- 8.4 If conditions are appropriate, it is the intention of the committee to run one "Coastal" race around government marks (see Appendix B). This course will be designated prior to leaving the dock and indicated by displaying the letter "C" on the Committee Signal Boat placard.

## 9. MARKS

- 9.1. The weather mark of the set race courses will be a yellow inflatable ball.
- 9.2. The starting and finishing marks will be orange inflatable marks and may be the same.
- 9.3. Marks for the "Coastal" race will be government marks.

## 10. THE START

- 10.1 The starting line will be between the staff from which a yellow or orange flag is displayed on the RC signal boat and the starting mark (pin).
- 10.2 Boats starting later than five (5) minutes after their starting signal will be scored Did Not Start without a hearing. This changes rules A4 and A5.
- 10.3 As a courtesy, to alert boats that a starting sequence will begin shortly, the Race Committee may make multiple sounds approximately one minute prior to the warning signal. This is not a timed sound signal.
- 10.4 Each boat is required to check in at the Race Committee signal boat by hailing her sail number and being acknowledged by the Race Committee before the warning signal of the first race in which she intends to participate. A boat may not protest a breach of this instruction. This changes Rule 60.1.
- 10.5 Race committee will attempt to hail OCS boats by sail number on individual recalls. Failure of the Race Committee to make this hail, failure of a boat to hear the hail, her position in the sequence of notifications or promptness of notification will not be valid grounds for redress. This modifies Rule 29.1.
- 10.6 Attempts to notify OCS boats will use VHF channel 72.

## 11. THE FINISH

- 11.1 The finishing line will be between a yellow or orange flag (or staff with code flag "S" if course has been shortened) on a committee boat and the designated finishing mark.
- 11.2 A boat sailing the course whose finish position cannot be changed no matter how she finishes, may be requested by the Race Committee to immediately return to the starting area. Such a boat will be scored as though she had completed the race.

## 12. TIME LIMITS

- 12.1 The time limit for the first boat to finish will be 60-minutes.
- 12.2 Boats failing to finish within 15-minutes after the first boat finishes will be scored TLE and given points 1 greater than the number of boats finishing the race. This changes Rules 35.

## 13. PROTESTS AND REQUESTS FOR REDRESS

- 13.1. A boat intending to protest another boat must so notify the Race Committee by hail immediately after finishing or retiring. This notification must include the sail number of the boat being protested and must be acknowledged by the Race Committee. This changes Rule 61.1(a).
- 13.2 If you wish to protest you must organize the protest committee yourself.
- 13.3 360 degree turns are required of boats that foul.
- 13.4 If you foul and don't do your penalty turn you have cheated everyone else and yourself. Remember "If in winning the race you have lost the respect of your fellow competitors then you have not won at all." – Paul Elvstrom

## 14. SCORING

- 14.1. One completed race shall constitute the regatta.
- 14.2 Low-point scoring will apply with the exception of no throw-outs.

## 15. SAFETY

- 15.1 A boat shall carry all equipment required by the Thistle class rules.
- 15.2 A boat that retires from a race shall notify the Race Committee as soon as possible.
- 15.3 A yacht requesting assistance should attempt to signal by repeatedly waiving an extended arm. A yacht may also contact the Race Committee on VHF Channel 72.
- 15.4 Boats disabled or unable to return to the dock under their own sail may be towed to a non-race mark, clear of the racing area, and will be asked to tie off/anchor there until a break in the racing permits a safety or Race Committee boat to tow the disabled vessel to dock.

## 16. AWARDS

- 16.1. Awards will be given in the Sail Newport boat park to the first 3 finishers.

## 17. DISCLAIMER OF LIABILITY

- 17.1. Competitors participate in the regatta entirely at their own risk. See Rule 4, Decision to Race. The organizing authority will not accept any liability for material damage or personal injury or death sustained in conjunction with or prior to, during or after the regatta.

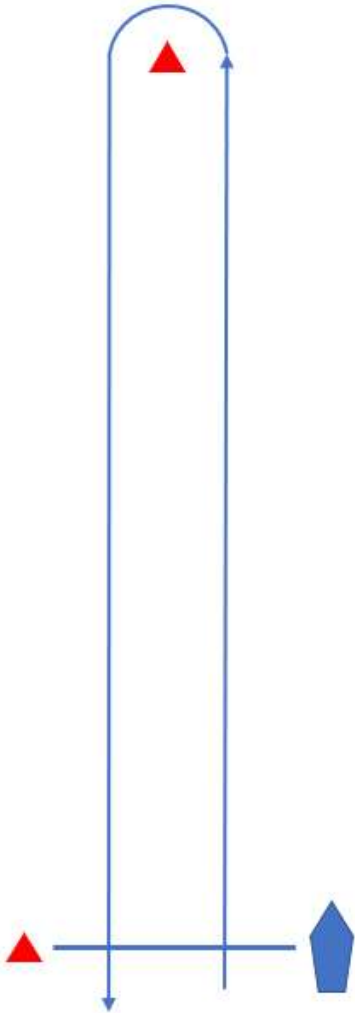
## 18. DISCIPLINE

- 18.1. All competitors are expected to maintain the highest level of conduct throughout the entire event. When the Race Committee, from its own observation or a report received from any source believes that a competitor may have committed a breach of a rule, good manners, or sportsmanship, or may have brought the sport into disrepute, it may call a hearing. After a proper hearing the penalty may range from a reprimand to dismissal from the regatta and additional action may be taken under RRS 69.

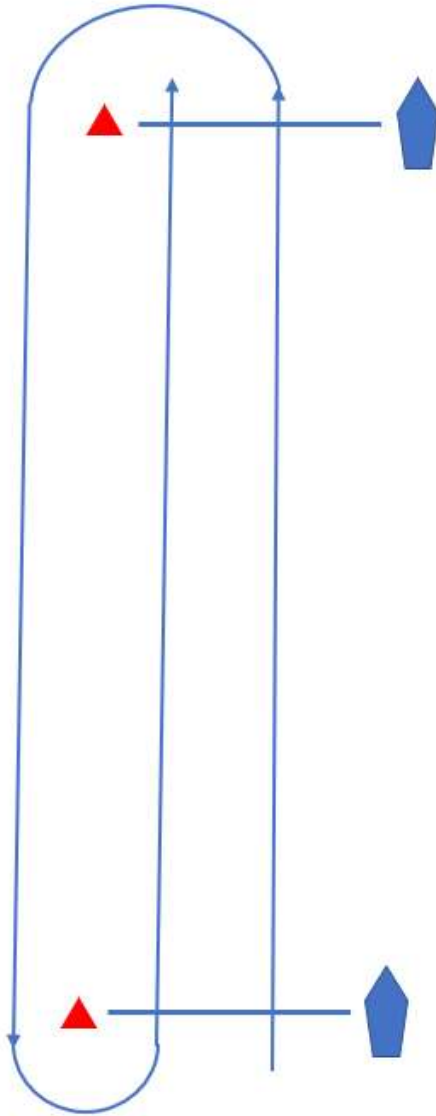
# Appendix A

All marks are to be rounded to port.

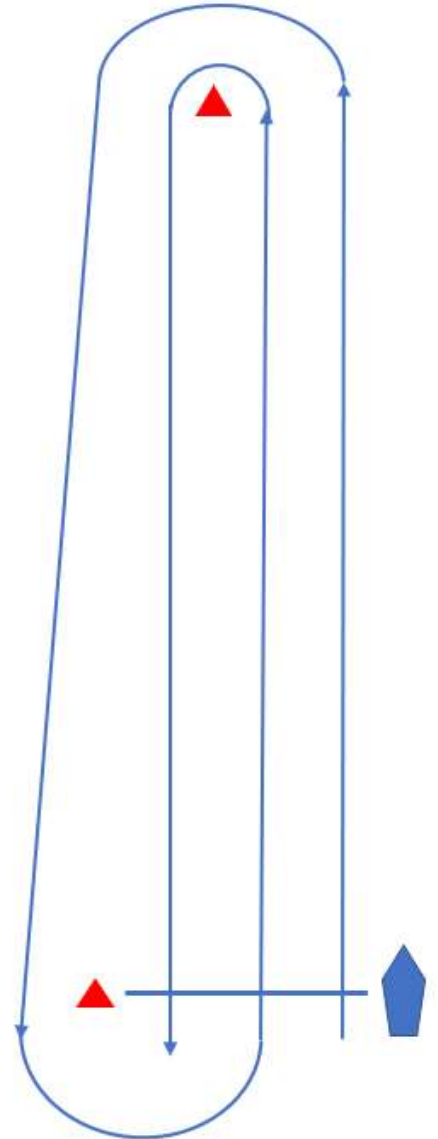
W2



W3



W4

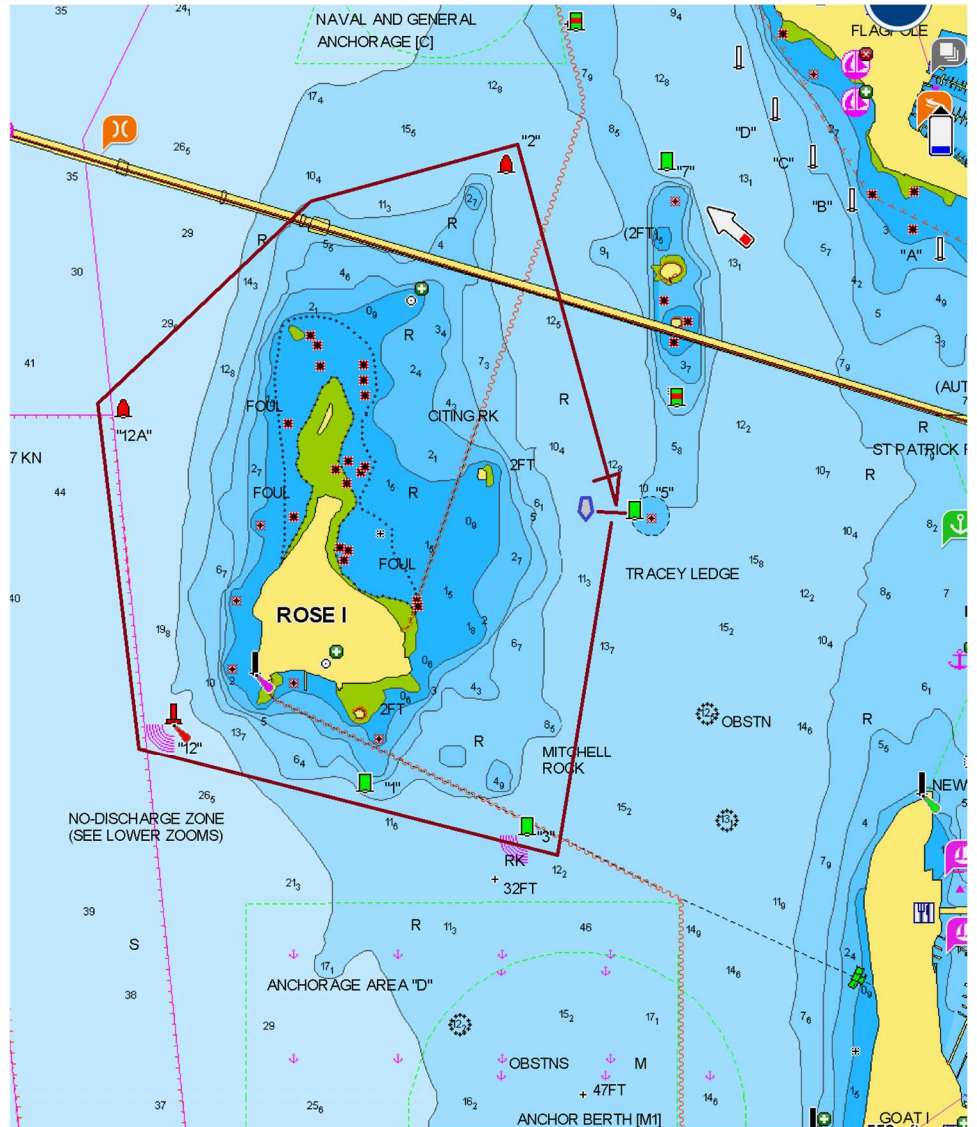


# Appendix B

## Coastal Race - Around Rose Island

Course:

- Start/Finish line in the vicinity of Green Can #5. Can #5 may be used as the pin end of the line.
- Green Can #3 to Starboard.
- Green Can #1 to Starboard.
- Red Bell #12 to Starboard.
- Red Nun #12A to Starboard.
- Through the indicated span of the Newport Pell Bridge.
- Red Nun #2 to Starboard.
- Through the indicated span of the Newport Pell Bridge.
- Finish
- Approximate course length: 2nm.



We wish to thank our sponsors:

The International Yacht and Athletic Club  
536 Thames St, Newport RI



Sail Newport  
72 Fort Adams Drive, Newport RI



and

**The RHODE ISLAND SAILING EVENTS COMMISSION**