



# 210 NATIONALS

## GULL LAKE YACHT CLUB

2022

International



Association

**National Championship  
Gull Lake Yacht Club (Host) and the  
Championship Committee of the  
International 210 Association (I210A),  
Organizing Authority (OA)  
9725 W Gull Lake Dr.  
Richland, MI 49083  
AUGUST 10 – AUGUST 13, 2022**



## SAILING INSTRUCTIONS

*The notation [NP] in a rule means that a boat may not protest another boat for breaking that rule. This changes RRS 60.1(a),*

### 1 RULES

- 1.1 The regatta will be governed by the rules as defined in the *Racing Rules of Sailing (RRS)*, the Bylaws and Rules Committee Rulings of the International 210 Association, including the Championship Regulations of the International 210 Association.
- 1.2 [NP][DP] The Rules of the Gull Lake Yacht Club, specifically any health protocol in place at the time, will be posted on the Official Notice Board (ONB).

### 2 CHANGES TO SAILING INSTRUCTIONS

- 2.1 Any change in the sailing instructions will be posted on the ONB before 0800 on the day it will take effect, except that any change in the schedule of races will be posted by 1900 on the day before it will take effect.

### 3 COMMUNICATION WITH COMPETITORS

- 3.1 Notices to Competitors will be posted on the Official Notice Board (ONB) located outside the Quarterdeck Room on the GLYC patio. The OA may post copies of Notices on the [Event Website \(https://yachtscoring.com/emenu.cfm?eid=15229\)](https://yachtscoring.com/emenu.cfm?eid=15229). Failure to post Notices on line will not be grounds for redress.
- 3.2 Boats may be hailed by Race Officials by either Bow (if assigned) or Sail number.
- 3.3 [DP] Failure of any information to be given or received shall not be grounds for redress. Information gathered on any other VHF channel or RC communication channel shall not be grounds for redress, except when a request for redress under this instruction is initiated by the RC or the Protest Committee. These changes are added to RRS 62.1.

### 4 CODE OF CONDUCT

- 4.1 [DP] Competitors and support persons shall comply with reasonable requests from race officials.

### 5 SIGNALS MADE ASHORE

- 5.1 Signals made ashore will be displayed from the signal boat while docked in its normal position.
- 5.2 When Signal flag AP is displayed ashore, '1 (one) minute' is replaced with 'not less than 30 (thirty) minutes' in race signals AP. This changes RRS Race Signal AP.





6 SCHEDULE OF EVENTS

Registration & Check In:

Date	Registration Times
Wednesday, August 10th, 2022	1300 – 1900
Thursday, August 11th, 2022	0800 – 0900

Race Schedule:

Date	Races Scheduled	Competitor's Briefing	Scheduled 1st Warning
Wed. Aug 10 <sup>th</sup>	Practice Race	1300	1445
Thurs. August 11 <sup>th</sup>	Championship Races	0900	1025
Fri. August 12 <sup>th</sup>	Championship Races	0830	1025
Sat. August 13 <sup>th</sup>	Championship Races	0830	1025
	<b>NO WARNING SIGNAL AFTER</b>		<b>1355</b>

Eight (8) races are scheduled. No more than four (4) races will be sailed in any one day. Three Races are required to be completed to constitute a series.

7 CLASS FLAG

7.1 Class Flag will be a rectangular white shape with red “210” on each side.

8 RACING AREA

8.1 The racing area will be in Gull Lake generally east of the Yacht Club. A course chart and guide will be posted on the [Event Website](#) and provided at check in.

9 COURSES

9.1 Courses will be as described in Attachment A.





## International 210 National Championship



### 10 MARKS

- 10.1 Marks 1 and 2s & 2p will be orange inflatables.
- 10.2 New marks will be yellow inflatables.
- 10.3 Original and new offset marks (Mark 1a) will be small orange inflatables.

### 11 THE START

- 11.1 No later than the warning signal, the Race Committee signal vessel will display the course and the approximate compass bearing and distance of the first leg. A gather signal (multiple sounds) may be used no less than 1 minute prior to warning signal.
- 11.2 The starting line will be between a staff displaying an orange flag on the race committee signal boat at the starboard end a staff displaying an orange flag on a Race Committee vessel or the course side of a starting Mark at the port end.
- 11.3 A boat starting later than ten (10) minutes after her starting signal will be scored Did Not Start (DNS) without a hearing. This changes RRS Appendix A4 and A5.

### 12 CHANGE OF THE NEXT LEG OF THE COURSE

- 12.1 To change the next leg of the course, the race committee will lay a new mark (or move the finishing line) and remove the original mark as soon as practicable. When in a subsequent change a new mark is replaced, it will be replaced by an original mark.

### 13 THE FINISH

- 13.1 The finishing line will be between a staff displaying an orange flag on a race committee boat and the course side of a nearby mark. This changes Race Signals – Blue Flag.

### 14 PENALTY SYSTEM

- 14.1 Appendix T1 (b) is changed to read; A Post-Race Penalty is a Scoring Penalty equal to 20% of the score for DNF if accepted during Protest Time, or 30% after and prior to a Hearing, up to 50% of the difference between the boat's finishing position in the race and the score for DNF, whichever is less. The Scoring Penalty is calculated as stated in rule 44.3(c). However, rule 44.1(a) applies.  
Appendix T2, T3, and T4 are deleted.
- 14.2 Appendix V1 shall apply.
- 14.3 The last sentence of Rule 44.3(b) of the RRS is amended to read as follows: If this is impracticable, she shall do so at the first reasonable opportunity at any time up to the commencement of a protest hearing. Rule 44.3(c) shall remain in effect.





## 15 TIME LIMITS

- 15.1 The time limit will be two and three-quarters (2 3/4) hours for the first boat to finish. Boats failing to finish within thirty (30) minutes after the first boat finishes or within the time limit, whichever is later, will be scored TLE. TLE will be scored as number of finishers plus 2. This changes RRS 35, A4 and A5.
- 15.2 If no boat has passed Mark 1 within 45 minutes, the race will be abandoned. Failure to meet target time will not be grounds for redress. This changes RRS 62.1(a).

## 16 HEARING REQUESTS

- 16.1 Protest forms are available at the registration desk and on the [Event Website](#). Protests shall be delivered to the Protest Committee within the protest time limit.
- 16.2 The protest time limit is thirty (30) minutes after the RC signal boat has docked after the last race of the day.
- 16.3 Notices will be posted on the ONB within thirty (30) minutes of the protest time limit to inform competitors of hearings in which they are parties, or named as witnesses.
- 16.4 Notices of protests by the race committee or protest committee will be posted on the ONB to inform boats under rule 61.1(b).
- 16.5 For the purpose of rule 64.4(b) the 'authority responsible' is the measurer appointed by the organizing authority.

## 17 SAFETY REGULATIONS

- 17.1 Boats must check-in with the Race Committee boat each day before racing. Boats will check-in by sailing past the stern of the committee boat in single file **on starboard tack** and hailing their sail number until acknowledged by the race committee. A boat which fails to check-in will be scored DNC - Did not start; did not come to the starting area.
- 17.2 A boat that retires from the race shall notify the Race Committee either before leaving the race course area or, if that is impossible, immediately after arriving ashore. Failure to notify the Race Committee in a timely manner may result in disqualification for the day's racing. Boats that retire must check-in with the Race Committee boat before resuming racing.

## 18 REPLACEMENT OF CREW OR EQUIPMENT

- 18.1 Substitution of competitors who are not listed on the entry form will not be allowed without prior written approval of the Race Committee.
- 18.2 Substitution of damaged or lost equipment will not be allowed unless approved by the Race or Technical Committee. Requests for substitution shall be made to the committee at the first reasonable opportunity.



## 19 EQUIPMENT AND MEASUREMENT CHECKS

19.1 A boat or equipment may be inspected at any time for compliance with class rules and sailing instructions. On the water, a boat can be instructed by a race official to proceed immediately to a designated area for inspection.

## 20 TRASH DISPOSAL

20.1 Trash may be placed aboard official or support person vessels.

## 21 BERTHING

21.1 [DP] Boats will be docked or moored in their assigned places at the Gull Lake Yacht Club.

## 22 HAUL-OUT RESTRICTIONS

22.1 Boat Launching & Removal will be in accordance with the OA's instructions.

22.2 Boats may not be hauled during the regatta. Exceptions to this may be made upon a written request to the Protest Committee.

## 23 RISK STATEMENT AND DISCLAIMER

23.1 RRS 3 states: "The responsibility for a boat's decision to participate in a race or to continue to race is hers alone." By participating in this event each competitor agrees and acknowledges that sailing is a potentially dangerous activity with inherent risks. These risks include strong winds and rough seas, sudden changes in weather, failure of equipment, boat handling errors, poor seamanship by other boats, loss of balance on an unstable platform and fatigue resulting in increased risk of injury. **Inherent in the sport of sailing is the risk of permanent, catastrophic injury or death by drowning, trauma, hypothermia or other causes.**

23.2 Competitors participate in the regatta entirely at their own risk. The Organizing Authority will not accept liability for material damage or personal injury or death sustained in conjunction with or prior to, during, or after the regatta.

## 24 INSURANCE

24.1 Each participating boat shall be insured with valid third-party liability insurance with a minimum coverage of \$300,000 per event or the equivalent.

## 25 PRIZES

25.1 The C. Raymond Hunt Trophy will be awarded to the Championship Yacht, which the winning skipper is entitled to hold during their tenure as 210 National Champion. The first through fifth place skippers and crew will also be awarded prizes. Prizes will be awarded to the winner of each race.

25.2 The OA reserves the right to present additional awards at its sole discretion.





## International 210 National Championship



### 26 FURTHER INFORMATION

- 26.1 Boat Launching & Removal will be in accordance with the OA's instructions.
- 26.2 This Notice of Race, Regatta Entry, Sailing Instructions, 210 Championship Regulations, and blank sail measurement certificates are or will be available on the [Event Website](#).
- 26.3 Additional information contact:

Gull Lake 210 Fleet Captains/Regatta Chairs

Fred Einspahr

[fjeinspahr@gmail.com](mailto:fjeinspahr@gmail.com)

Joe Brogger

[jbrogger@bfgroup.com](mailto:jbrogger@bfgroup.com)

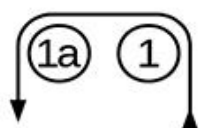




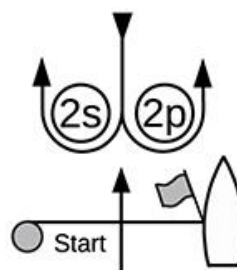
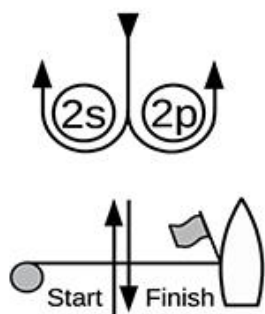
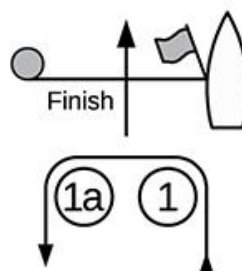
ATTACHMENT A

COURSES

LA



WA



Course LA – Windward/Leeward w/ Offset Mark, Leeward Finish	
Signal	Mark Rounding Order
LA2	Start – 1 – 1a – 2s/2p – 1 - Finish
LA3	Start – 1 – 1a – 2s/2p – 1 – 2s/2p – 1 -Finish

Course WA – Windward/Leeward w/ Offset Mark, Windward Finish	
Signal	Mark Rounding Order
WA2	Start – 1 – 1a – 2s/2p – Finish
WA3	Start – 1 – 1a – 2s/2p – 1 – 2s/2p - Finish

In the event only one Mark is laid at 2s/2p, that Mark shall be left to port.