



210 NATIONALS

GULL LAKE YACHT CLUB

2022

International



Association

**National Championship
Gull Lake Yacht Club (Host) and the
Championship Committee of the
International 210 Association (I210A),
Organizing Authority (OA)
9725 W Gull Lake Dr.
Richland, MI 49083
AUGUST 10 – AUGUST 13, 2022**



International 210 National Championship Notice Of Race



NOTICE OF RACE

The notation [NP] in a rule means that a boat may not protest another boat for breaking that rule. This changes RRS 60.1(a),

1 RULES

- 1.1 The regatta will be governed by the 'rules' as defined in the *Racing Rules of Sailing (RRS)*, the Bylaws and Rules Committee Rulings of the International 210 Association, including the Championship Regulations of the International 210 Association.
- 1.2 [NP][DP] The Rules of the Gull Lake Yacht Club, specifically any health protocol in place at the time, will be posted on the Official Notice Board (ONB).

2 SAILING INSTRUCTIONS

- 2.1 Sailing Instructions will be available at registration and posted on the [Event Website](https://yachtscoring.com/emenu.cfm?eid=15229) (<https://yachtscoring.com/emenu.cfm?eid=15229>).

3 COMMUNICATION

- 3.1 The Official Notice Board (ONB) will be located on the patio outside the Quarterdeck room of the Gull Lake Yacht Club (GLYC) clubhouse. Postings to the ONB may also be posted on the [Event Website](#). Failure, delay to post, or errors in notices to the Website shall not be grounds for redress.
- 3.2 All boats shall carry a VHF radio capable of communicating on US frequencies. On the water, the Race Committee may make courtesy broadcasts to competitors on a VHF Channel to be stated in the Sailing Instructions. Failure of the Race Committee to make broadcasts, of competitors to receive broadcasts, or the timing of or errors in any broadcasts shall not be grounds for redress.
- 3.3 [DP][NP] From the time a boat leaves the dock until the last race of the day is completed, except in an emergency or to report a retirement, a boat shall not make voice or data transmissions on any device and shall not receive voice or data communication that is not available to all boats.

4 ELIGIBILITY AND ENTRY

- 4.1 Eligible competitors shall be as defined in Article V of the Championship Regulations.
- 4.2 All yachts and their crew must also conform to all other applicable Articles of the Championship Regulations.





International 210 National Championship Notice Of Race

210

- 4.3 Eligible yachts may be entered by completing the regatta entry form including any required supplemental forms on the Event Website by 1700 Friday August 5, 2022. Entries received after this time may be accepted at the sole discretion of the Organizing Authority.
- (a) To complete entry, all yachts shall also provide the following at the on-site check-in (see NoR 8):
 - (1) sail measurement form(s) or evidence of previous measurement (NoR 9.3), and
 - (2) a copy of insurance policy or insurance certificate evidencing \$300,000.00 of liability coverage (see NoR 17.1), and
 - (3) the Liability Waiver (available on the [Event Website](#) and at check-in) executed by all competitors and Support Persons.
 - (b) All yachts shall produce a valid measurement certificate or evidence that a valid measurement certificate is on file with the International 210 Association.
- 4.4 A representative from each yacht (the Person in Charge) shall check-in at Registration (see NoR 8) to confirm that their yacht has completed registration and to receive the yacht's Registration Package.
- 4.5 All entry and registration/check-in materials must be completed in their entirety and fees paid in full in order for the entry to be accepted.

5 FEES

- 5.1 Entry fee shall be \$500.00 if paid on or by July 30th and \$525.00 if paid after July 30th at 1700. This will cover skipper and 2 crew for all post racing events. Additional crew will be charged at \$100.00 each. Individual tickets for social events will be available on the [Event Website](#) and at check-in for non-competitors.

6 CLASSIFICATION

- 6.1 Any Member in good standing and meeting the US Sailing definition of a Group 1 competitor shall have the right to enter the National Championship as a Contestant. A Group 3 competitor may enter the National Championship as a Contestant if he has been a helmsman in two (2) International 210 Association sanctioned regattas in the period since the previous National Championship.

7 ADVERTISING

- 7.1 Boats may be required to display advertising chosen and supplied by the OA. If this rule is broken, World Sailing Advertising Code applies.





International 210 National Championship Notice Of Race



8 SCHEDULE OF EVENTS

Registration & Check In:

| Date | Registration Times |
|------------------------------|--------------------|
| Wednesday, August 10th, 2022 | 1300 – 1900 |
| Thursday, August 11th, 2022 | 0800 – 0900 |

Race Schedule:

| Date | Races Scheduled | Competitor's Briefing | Scheduled 1 st Warning |
|--------------------------------|--------------------------------|-----------------------|-----------------------------------|
| Wed. Aug 10 th | Practice Race | 1300 | 1445 |
| Thurs. August 11 th | Championship Races | 0900 | 1025 |
| Fri. August 12 th | Championship Races | 0830 | 1025 |
| Sat. August 13 th | Championship Races | 0830 | 1025 |
| | NO WARNING SIGNAL AFTER | | 1355 |

Eight (8) races are scheduled. No more than four (4) races will be sailed in any one day.

Social Events:

The Social schedule will be available on the [Event Website](#). See also NoR 5.1.

9 MEASUREMENTS

- 9.1 There will be no measurement of boats or sails on site.
- 9.2 All yachts shall have a valid measurement certificate on file with International 210 Association.
- 9.3 A current sail measurement certificate or evidence of previous measurement shall be supplied at Check-in.
- 9.4 [NP][DP] Required equipment (By-Laws Article XI(1)) may be inspected at any time at the discretion of the Protest Committee.

10 RACING AREA

- 10.1 The racing area will be in Gull Lake generally east of the Yacht Club. A course chart and guide will be posted on the [Event Website](#) and provided at check in.





International 210 National Championship Notice Of Race



11 COURSES

11.1 Courses will be as described in Attachment A.

12 PENALTY SYSTEM

12.1 Appendix T shall apply as modified in the Sailing Instructions.

12.2 Appendix V1 shall apply.

12.3 The last sentence of Rule 44.3(b) of the RRS is amended to read as follows: If this is impracticable, she shall do so at the first reasonable opportunity at any time up to the commencement of a protest hearing. Rule 44.3(c) shall remain in effect.

13 SCORING

13.1 Eight Championship Races are scheduled. Three Races are required to be completed to constitute a series.

13.2 When fewer than 6 races have been completed, a boat's series score will be the total of her race scores.

13.3 When 6 or more races have been completed, a boat's series score will be the total of her race scores excluding her worst score.

13.4 The practice race will not be scored.

14 BERTHING

14.1 [DP] Boats will be docked or moored in their assigned places at the Gull Lake Yacht Club.

15 HAUL-OUT RESTRICTIONS

15.1 Boats may not be hauled during the regatta. Exceptions to this may be made upon a written request to the Protest Committee.

16 RISK STATEMENT AND DISCLAIMER

16.1 RRS 3 states: "The responsibility for a boat's decision to participate in a race or to continue to race is hers alone." By participating in this event each competitor agrees and acknowledges that sailing is a potentially dangerous activity with inherent risks. These risks include strong winds and rough seas, sudden changes in weather, failure of equipment, boat handling errors, poor seamanship by other boats, loss of balance on an unstable platform and fatigue resulting in increased risk of injury. **Inherent in the sport of sailing is the risk of permanent, catastrophic injury or death by drowning, trauma, hypothermia or other causes.**





International 210 National Championship Notice Of Race



16.2 Competitors participate in the regatta entirely at their own risk. The Organizing Authority will not accept liability for material damage or personal injury or death sustained in conjunction with or prior to, during, or after the regatta.

17 INSURANCE

17.1 Each participating boat shall be insured with valid third-party liability insurance with a minimum cover of \$300,000 per event or the equivalent.

18 PRIZES

18.1 The C. Raymond Hunt Trophy will be awarded to the Championship Yacht, which the winning skipper is entitled to hold during their tenure as 210 National Champion. The first through fifth place skippers and crew will also be awarded prizes. Prizes will be awarded to the winner of each race.

18.2 The OA reserves the right to present additional awards at its sole discretion.

19 FURTHER INFORMATION

19.1 Boat Launching & Removal will be in accordance with the OA's instructions.

19.2 This Notice of Race, Regatta Entry, Sailing Instructions, 210 Championship Regulations, and blank sail measurement certificates are or will be available on the [Event Website](#).

19.3 Additional information contact:

Gull Lake 210 Fleet Captains/Regatta Chairs

Fred Einspahr

fjeinspahr@gmail.com

Joe Brogger

jbrogger@bfgroup.com



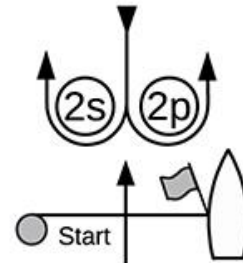
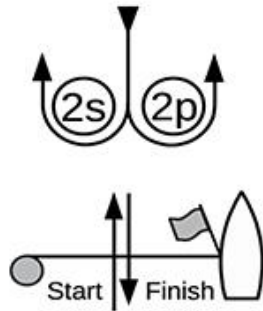
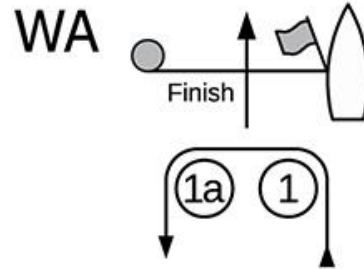
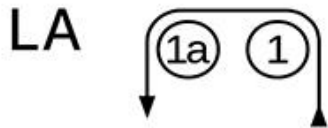


International 210 National Championship Notice Of Race



ATTACHMENT A

COURSES



| Course LA – Windward/Leeward with Offset Mark, Leeward Finish | |
|---|--|
| Signal | Mark Rounding Order |
| LA2 | Start – 1 – 1a – 2s/2p – 1 – 1a – Finish |
| LA3 | Start – 1 – 1a – 2s/2p – 1 – 1a – 2s/2p – 1 – 1a – Finish |
| LA4 | Start – 1 – 1a – 2s/2p – 1 – 1a – 2s/2p – 1 – 1a – 2s/2p – 1 – 1a – Finish |

| Course WA – Windward/Leeward with Offset Mark, Windward Finish | |
|--|---|
| Signal | Mark Rounding Order |
| WA2 | Start – 1 – 1a – 2s/2p – Finish |
| WA3 | Start – 1 – 1a – 2s/2p – 1 – 1a – 2s/2p – Finish |
| WA4 | Start – 1 – 1a – 2s/2p – 1 – 1a – 2s/2p – 1 – 1a – 2s/2p – Finish |

In the event only one Mark is laid at 2s/2p, that Mark shall be left to port.