



## INTERNATIONAL ETHELLES CLASS EUROPEAN CHAMPIONSHIP 2-4 SEPTEMBER 2022

**ORGANIZING AUTHORITY  
ROYAL YACHT SQUADRON**

### NOTICE OF RACE

*The notation '[NP]' in a rule of the NoR means that a boat may not protest another boat for breaking that rule. This changes RRS 60.1(a).*

#### 1. RULES

- 1.1. The event is governed by the rules as defined in the Racing Rules of Sailing (RRS).
- 1.2. The first two sentences of RRS 44.1 are changed to: "A boat may take a One-Turn Penalty when she may have broken one or more rules of Part 2 or RRS 31 in an incident while racing. However, when she may have broken one or more rules of Part 2 while in the zone around a mark other than a starting mark, her penalty shall be a Two-Turns Penalty."
- 1.3. In RRS 44.2 insert after the first sentence: "However, if Mark 1a (spreader mark) is set, a boat may take a penalty for an incident in the zone around Mark 1 or on the leg between Mark 1 and Mark 1a, as soon as possible after leaving the zone around Mark 1a"
- 1.4. [DP] International Etchells Association Class Rule.
- 1.5. The RYA national prescriptions apply.
- 1.6. If there is a conflict between languages the English text takes precedence.
- 1.7. [NP] Bow numbers will be assigned by the Organizing Authority (OA) and supplied and fixed to each participating boat prior to inspection. They shall be affixed to the hull according to the instructions provided by the OA and shall be retained on both sides of the hull throughout the event. Boats failing to follow these requirements are subject to protest only by the Race Committee (RC) or event Technical Committee (TC).
- 1.8. Where a skipper is using sails with a different sail number than that of the boat's hull, the skipper will inform the Organising Committee before commencement of racing. All sails being used must exhibit the same sail number.
- 1.9. If, through no fault of its personnel, a boat's hull or spar or sail is rendered incapable of continuing the event, the Skipper may petition the Jury for permission to substitute

a replacement hull or spar or sail for the remainder of the event.

- 1.10. [DP] A boat shall not carry any unreasonable quantities of water or anything else for the purpose of adding ballast. The amount of water that is stored in containers or bottles which is permitted to be carried should be sufficient for the crew for drinking purposes during the day's racing, to this end a maximum of 10 litres of water per boat is acceptable.
- 1.11. Notices to Mariners for the Ports of [Southampton](#), [Portsmouth](#) and [Cowes](#) apply.

#### 2. SAILING INSTRUCTIONS

The sailing instructions will be available at [www.yachtscoring.com](http://www.yachtscoring.com) by 12 August 2022.

#### 3. COMMUNICATION

- 3.1. The Official Notice Board (ONB) will be online at [www.yachtscoring.com](http://www.yachtscoring.com). and the Race Office will be at Cowes Yacht Haven.
- 3.2. All boats shall carry a Marine VHF Radio capable of receiving all normal **International VHF Channels**. All VHF communication shall be on International VHF channels.
- 3.3. On the water the Race Committee will make courtesy broadcasts to competitors on VHF radio. The channel will be stated in the SIs.
- 3.4. [DP] The use of mobile/cell phones, or any device capable of sending and/or receiving external electronic communication and/or connecting to the internet is prohibited after the first Warning Signal on each race day until the boat has completed racing that day, except in an emergency threatening the safety of any member of the crew or the flotation of the boat.

#### 4. ELIGIBILITY AND ENTRY

- 4.1. The event is open to all boats of the Etchells Class, with a valid measurement certificate.
- 4.2. Boats may enter the event by registering online at [www.yachtscoring.com](http://www.yachtscoring.com).
- 4.3. To be considered an entry in the event, a boat shall complete all registration requirements and pay all fees.
- 4.4. Late entries will be accepted at the discretion of the OA.

#### 5. FEES

- 5.1. The entry fee is £255 per boat and does not include berthing fees.
- 5.2. The closing date for entries will be 1159 hrs on Wednesday 31 August 2022.
- 5.3. Late entries will be accepted at the discretion of the OA.

#### 6. CREW LIMITATIONS

- 6.1. World Sailing Categorization Code will apply to all crew members of boats competing for the Corinthian Prize; each Corinthian crew member shall have a valid WS Sailor Categorization as a Group 1 competitor no later than the Crew Deadline. Information on how to apply can be found at <https://www.sailing.org/sailors/sailor-categorisations/>.
- 6.2. The Crew Deadline for boats competing for the Corinthian Prize is 1159 BST on Wednesday 31 August 2022.

**7. ADVERTISING**

7.1. All boats shall comply with Class Rule C.4.

**8. QUALIFYING SERIES AND FINAL SERIES**

Not applicable.

**9. SCHEDULE**

9.1. The times shown in the table below are UTC plus 1 hour (British Summer Time - BST).

9.2. Indicative Tide Times are for High Water Portsmouth.

DAY HWP (BST)	TIME	FIRST WARNING SIGNAL	NOTES
Thu 1 Sept HW Ports 1530 - 4.5m	1600 - 1900		Sail nomination and crew weigh in CYH.
Fri 2 Sept HW Ports 1620 - 4.4m	1000	1155	Briefing in CYH. Race 1. Race 2 asap after finish.
Sat 3 Sept HW Ports 0430 - 4.2m 1710 - 4.2m		1025	Race 3. Race 4 asap after finish.
Sun 4 Sept HW Ports 0540 - 4.0m 1820 - 4.0m		1025	Race 5. Race 6 after finish.  Prizegiving asap after racing in RYS.

9.3. The intention of the Race Committee is to run six races during the event.

9.4. The Race Committee intends to run no more than two (2) races each day. However additional races may be sailed in order to complete the programme because of weather or other reasons.

9.5. On the last day of scheduled racing, no warning signal will be made after 1500.

**10. EQUIPMENT INSPECTION**

10.1. Each boat shall produce a valid measurement certificate.

10.2. Boats may be inspected at any time during the event.

**11. CLOTHING AND EQUIPMENT**

11.1. See Class Rule C3.2.

**12. VENUE**

12.1. Racing will take place from a Committee Vessel in the Central and Eastern Solent.

12.2. To indicate the general race area a local racing chartlet can be found in Addendum A of this NoR.

**13. COURSES**

13.1. The courses to be sailed will be a windward / leeward configuration as described in the Sailing Instructions.

13.2. The target time for each race is 90 minutes.

**14. PENALTY SYSTEM**

14.1. The first two sentences of RRS 44.1 are changed to: "A boat may take a One-Turn Penalty when she may have broken one or more rules of Part 2 or RRS 31 in an incident while racing. However, when she may have broken one or more rules of Part 2 while in the zone around a mark other than a starting mark, her penalty shall be a Two-Turns Penalty".

14.2. In RRS 44.2 insert after the first sentence: "However, if Mark 1a (spreader mark) is set, a boat may take a penalty for an incident in the zone around Mark 1 or on the leg between Mark 1 and Mark 1a, as soon as possible after leaving the zone around Mark 1a".

**15. SCORING**

15.1. One race is required to be completed to constitute a series.

15.2. When fewer than five race have been completed, a boat's series score shall be the total of her race scores.

15.3. When five or more races have been completed, a boat's series score will be the total of her races excluding her worst score.

**16. SUPPORT PERSON VESSELS**

16.1. [DP] Team leaders, coaches, other support personnel and their coach and support boats shall stay outside areas where boats are racing from the time of the first Warning Signal of the day until racing has been concluded for the day. Between races, coach and support boats shall not approach, communicate with or transfer provisions or equipment to or from their supported boats unless in a medical or emergency requirement threatening the health of the crew or the flotation of the boat and only with the expressed permission of the International Jury.

16.2. All support person vessels shall carry a marine VHF radio and comply with RRS 37 'Search and Rescue Instructions'.

**17. CHARTERED OR LOANED BOATS**

17.1. [DP] In accordance with RRS Appendix G3, a chartered or loaned boat may carry national letters or a sail number in contravention of her class rules, provided that the race committee is notified at Registration and has approved her sail identification before the first race.

**18. BERTHING**

18.1. [DP] Boats shall be kept in their assigned places in Cowes Yacht Haven while in harbour.

**19. LAUNCHING AND HAUL OUT RESTRICTIONS**

19.1. Boats shall not be launched, relaunched or hauled out after 1800 on Thursday 1 September except with and according to the terms of prior written permission of the race committee.

**20. DIVING EQUIPMENT AND PLASTIC POOLS**

- 20.1.** [DP] Underwater breathing apparatus and plastic pools or their equivalent shall not be used around boats between the warning signal of the first race and the end of the event.
- 20.2.** [DP] No person shall undertake any swimming, underwater or diving activities of any kind within the harbour without a valid permit to dive from the Cowes Harbour Master or the manager of the marina you wish to dive at. This prohibited activity is legislated under Cowes Harbour Commission [General Direction 4.4](#).
- 20.3.** Keelboats shall not be cleaned below the waterline by any means between the preparatory signal of the first race of the event and the end of the event.

**21. DATA PROTECTION**

- 21.1.** The personal information you provide to the Organizing Authority will be used to facilitate your participation in the event. If you have agreed to be bound by the Racing Rules of Sailing and the other rules that govern the event (the rules), the legal basis for processing that personal information is contract. If you are not bound by the rules, the legal basis for processing that personal information is legitimate interest. Your personal information will be stored and used in accordance with the Organizing Authority's privacy policy. When required by the rules, personal information may be shared with the RYA, your national authority and/or World Sailing. The results of the event and the outcome of any hearing or appeal may be published.
- 21.2.** Competitors automatically grant to the Organizing Authority, without payment, the right in perpetuity to make, use and show any motion pictures, still pictures and live, taped or filmed television of or relating to the event provided that they do not infringe the privacy rights of participants.
- 21.3.** The Royal Yacht Squadron (RYS) and Royal Yacht Squadron Limited (RYSL) Armorial, Burgees and all other associated logos shall not be used by any club or individual without the prior written permission of the RYS.

**22. RISK STATEMENT**

- 22.1.** Rule 3 of the Racing Rules of Sailing states: "The responsibility for a boat's decision to participate in a race or to continue racing is hers alone."
- 22.2.** Sailing is by its nature an unpredictable sport and therefore inherently involves an element of risk. By taking part in the event, each competitor agrees and acknowledges that:
- They are aware of the inherent element of risk involved in the sport and accept responsibility for the exposure of themselves, their crew and their boat to such inherent risk whilst taking part in the event;
  - They are responsible for the safety of themselves, their crew, their boat and their other property whether afloat or ashore;
  - They accept responsibility for any injury, damage or loss to the extent caused by their own actions or omissions;
  - Their boat is in good order, equipped to sail in the event and they are fit to participate;
  - The provision of a race management team, patrol boats, and other officials and volunteers by the event

organizer does not relieve them of their own responsibilities;

- The provision of patrol boat cover is limited to such assistance, particularly in extreme weather conditions, as can be practically provided in the circumstances;
- It is their responsibility to familiarize themselves with any risks specific to this venue or this event drawn to their attention in any rules and information produced for the venue or event and to attend any competitor or safety briefing held for the event;

**23. INSURANCE**

Each participating boat shall be insured with valid third-party liability insurance with a minimum cover of £3 million per incident or the equivalent.

**24. PRIZES**

- 24.1.** The event prize giving will be held at the Royal Yacht Squadron as soon as possible after the final day's racing and after any hearings.
- 24.2.** Prizes will be awarded to first, second and third ranked boats in the overall series.
- 24.3.** The **European Championship Trophy** will be awarded to the winning boat in the series.
- 24.4.** The **Corinthian Prize** will be awarded to the highest placed boat whose helm and crew are all WSSC Group 1. Those crews competing for the Corinthian Prize must provide their current valid WSSC ID number before racing starts.
- 24.5.** A **Youth Prize** will also be awarded to the highest place boat sailed by youth crew. A youth crew is defined as one where all crew members are under 29 years of age on the 01/01/2022.
- 24.6.** Other trophies will be awarded at the discretion of the Organising Authority.

**25. FURTHER INFORMATION**

For further information please contact:

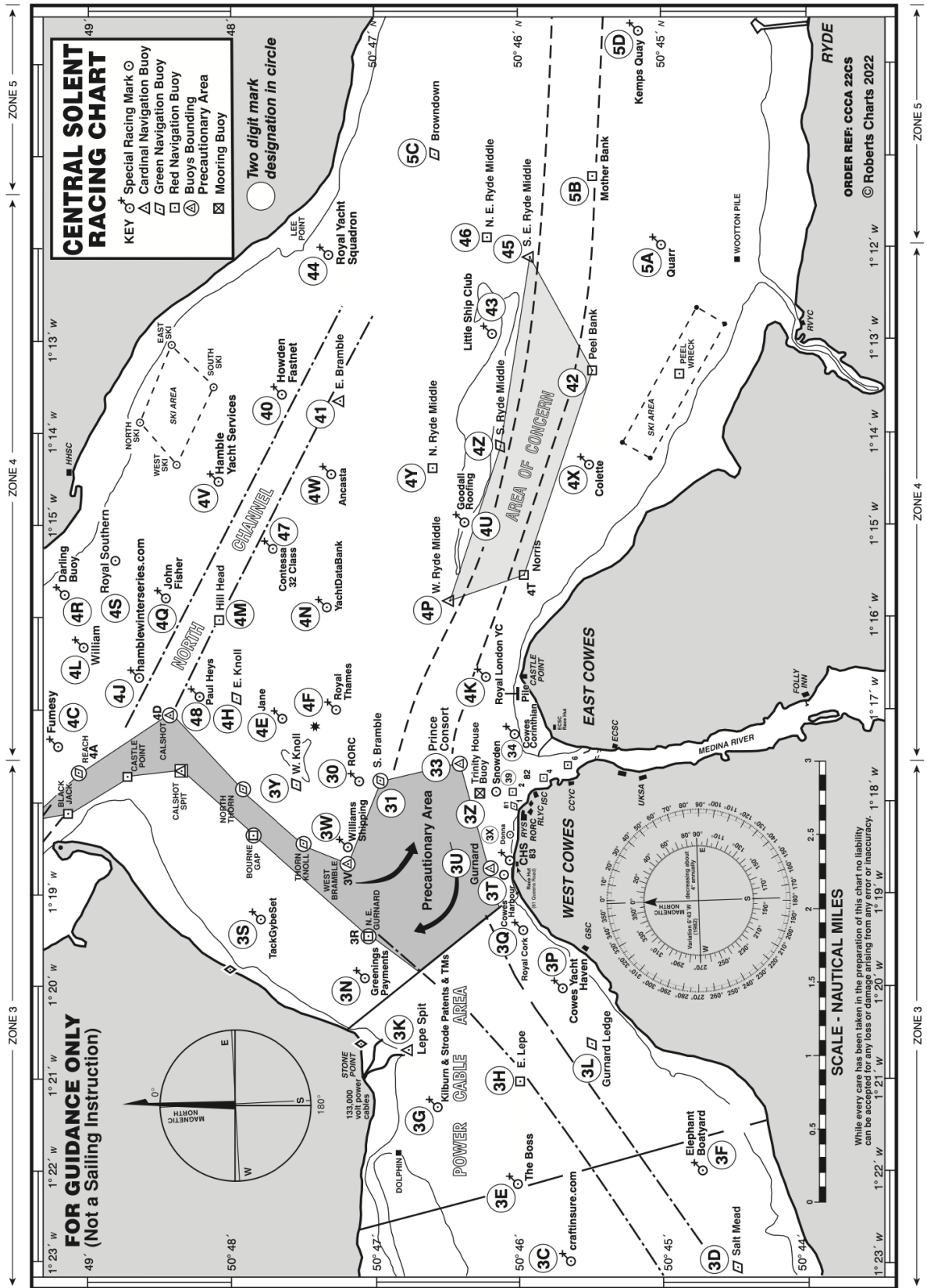
The Royal Yacht Squadron  
The Castle  
Cowes, UK  
PO31 7QT  
Tel +44 1983 292 191  
mail@rys.org.uk

**NOTICE OF RACE ENDS****1. SOCIAL ARRANGEMENTS**

Further details of the social programme will be available in a separate document.

**ADDENDUM A.**

See below a chartlet of the Racing Area showing the Solent Two Character Codes.



All correspondence should be directed to:  
**The Royal Yacht Squadron, The Castle, Cowes, UK, PO31 7QT. Tel: 01983 292191, Email: [mail@rys.org.uk](mailto:mail@rys.org.uk)**