



100 MILER
July 30, 2022
M&M Yacht Club

SAILING INSTRUCTIONS

1. RULES

- 1.1 The race will be governed by the current *Racing Rules of Sailing*.
- 1.2 If a yacht is sailed singlehanded, mechanical and electro-mechanical steering devices are permitted, and movable hull appendages may be operated by other than manual means. This changes Rule 52.
- 1.3 If there is a conflict between the Notice of Race and these Sailing Instructions, the Sailing Instructions shall take precedence.
- 1.4 Additional changes to these Sailing Instructions may be made by posting a notice to competitors prior to 0730 on race day.

2. ENTRIES

Eligible boats may enter by completing the online registration process as described in the Notice of Race.

3. NOTICES TO COMPETITORS

Notices to competitors will be posted on the official notice board located indoors at M&M YC and on the Official Notice Board at Yacht Scoring - <https://yachtscoring.com/emenu.cfm?eid=14992>

4. SIGNALS MADE ASHORE

Signals made ashore will be displayed from the flagpole located at M&M Yacht Club. If a postponement is signaled ashore, the first warning signal will be made not less than one hour after flag AP is lowered. This changes Race Signals AP. Signals displayed from the Menominee Marina breakwall shall not be considered as made ashore.

5. SCHEDULE and CLASS FLAGS

- 5.1 A MANDATORY skippers meeting will be held at M&M Yacht Club at 1745 on Friday, July 29.
- 5.2 First warning: 0900 on Saturday, July 30.
- 5.3 The order of starts and class flags will be posted as a Notice to Competitors per SI 1.4

6. THE START

- 6.1 The starting area will lie east of the Menominee Marina breakwall.
- 6.2 The starting line will be between an orange flag on the Race Committee boat and a yellow inflatable marker, which must be kept to Starboard.
- 6.3 A limit mark may be attached to the Race Committee boat. A boat that touches a limit mark, the Committee boat, or passes between the limit mark and the committee boat shall be considered to have touched the starting mark. This changes Rule 31.
- 6.4 The race will be started using the Rule 26 system.
- 6.5 There will be a five (5) minute delay between the starting signal for each section and the warning signal for the following section's start.
- 6.6 If a division is placed under general recall, its restart will be held after the last scheduled start. Boats should note their class flag to ensure they start at the appropriate time.
- 6.7 Starting Area Restriction: The starting area shall be defined as all waters west of a line extending from the Menominee North Pierhead Light, through the Race Committee boat, to the shoreline north-northwest of the Race Committee boat. Racing boats shall, after checking in with Race Committee, immediately head east of the starting area until 5 minutes prior to their scheduled warning. Failure to do so may subject boats to protest from RC or fellow competitors.

7. COURSE and MARKS

Courses and marks shall be as described in attached Appendix A.

8. THE FINISH

- 8.1 The finish line will be between an orange flag on the northeast corner of the Menominee Marina breakwall (45° 06.550'N, 087° 36.204'W) and a yellow inflatable mark. Leave the inflatable mark to port as you cross the finish line.

- 8.2 Boats finishing after sunset must hail race committee on **VHF 78A** approximately 10 minutes prior to finish, giving their boat name and sail number.
- 9. TIME LIMIT and WITHDRAWAL FROM RACE**
- 9.1 There is no time limit. However, boats finishing after 2100 hours on race day shall record their own time, as well as the names of boats finishing ahead and behind them, and report this information to Race Committee at M&M Yacht Club.
- 9.2 Boats withdrawing from the race shall notify M&M Yacht Club as soon as possible by calling or texting (715) 923-2508.
- 10. CHECK IN**
- All boats, once on the water, shall check in by passing and hailing Race Committee on the boat displaying the "RC" flag. Radio check-ins are not allowed.
- 11. COMMUNICATION**
- 11.1 Rule 41(c) is changed to read as follows: Help in the form of information freely available to all yachts and any publicly offered internet or broadcast weather information from sources available to all competitors, whether on a subscription or free basis is allowable. Allowable services must provide the same information to all competitors and not provide boat-specific weather or routing information. Competitors may use any means to retrieve the data. Accessing other information during the race will be considered a violation of Rule 41.
- 11.2 Race committee may – at its option and ability - provide courtesy broadcasts on **VHF 78A**. Boats shall not transmit on **VHF 78A** except as required by SI 8.2. Please note that 78A has been renamed and may show up as 1078 on some newer radios. Additionally, your radio must be in USA mode to communicate on this channel. Any radio broadcasts by race committee are to be considered a courtesy only and are not subject to protest.
- 12. PROTESTS**
- 12.1 Protests shall be submitted on a US Sailing protest form, which will be available at M&M Yacht Club.
- 12.2 A boat shall file any protests within two (2) hours of her finish.
- 12.3 Posting of the parties involved, the hearing time, and the place of hearing, on either the official notice board or the Yacht Scoring event site as described in SI 3, shall constitute notice as required in Rule 63.2
- 13. SCORING**
- 13.1 The race will be scored using PHRF – Time on Distance. Course distances for scoring purposes will be as stated in Appendix A.
- 13.2 Spinnaker boats will be handicapped using LMPHRF DHCP. Non-Spinnaker and Non-Spin Small Boats will be handicapped using LMPHRF NSHCP.
- 13.3 Overall winners will be the yachts with lowest corrected time in each class (Spinnaker/Non-Spinnaker/Non-Spin Small Boats). Division winners will also be recognized and awarded.
- 14. RACE OFFICIALS and FURTHER INFORMATION**
- 14.1 Principal Race Officer
Bob Sample – US Sailing Certified Race Official
- 14.2 Chief Judge
Tom Atkins – US Sailing Certified Judge
- 14.3 Online Registration and Further Information
Brian Chaltry - MMYC Race Mgmt
chaltry.brian@gmail.com – 920.915.4422
- 14.4 Event Chair
Laurie Caebe – MMYC Rear Commodore
100miler@mmyc.org

Thank you to our 2022 sponsors!

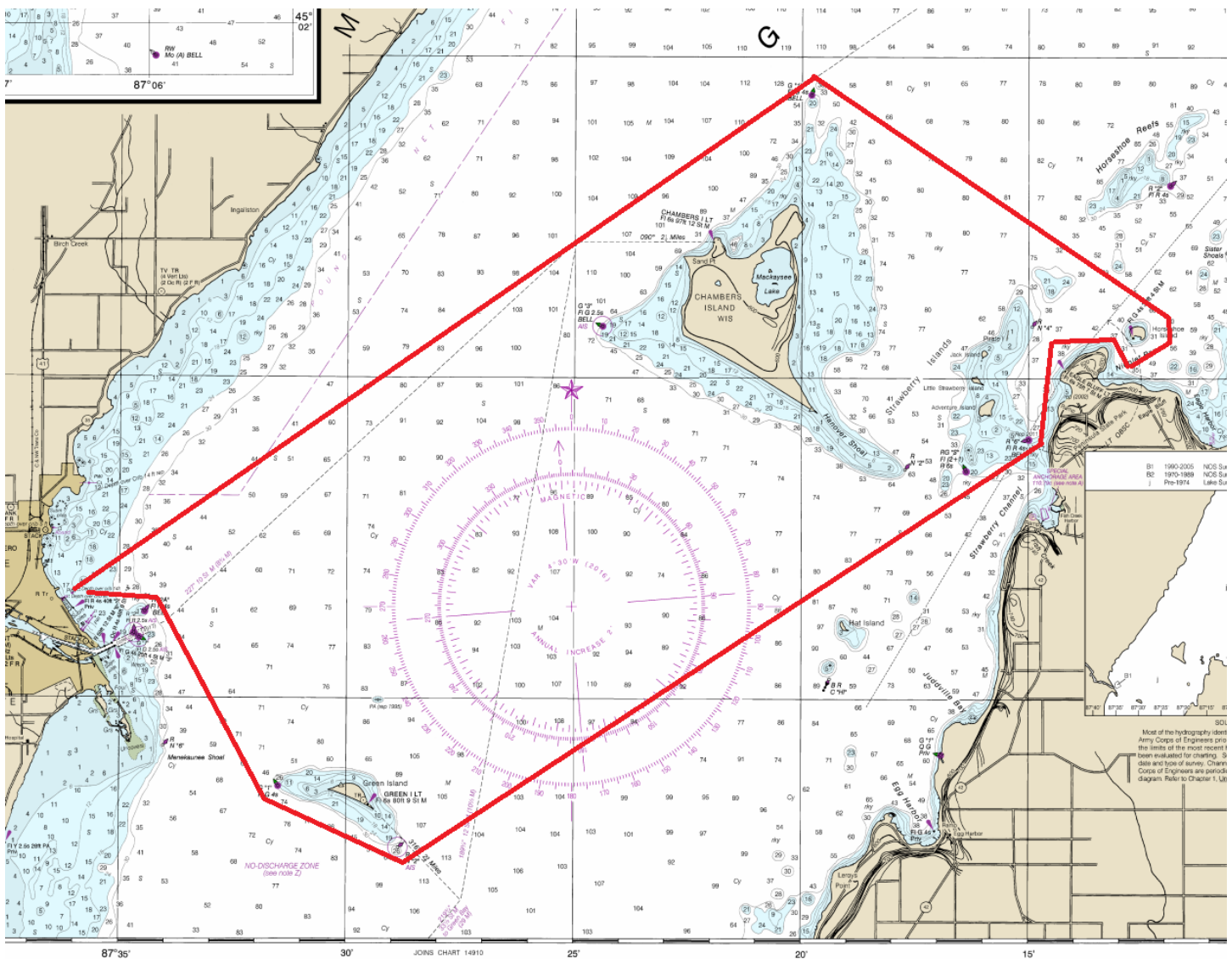


SAILING INSTRUCTIONS

APPENDIX A – COURSES TO BE SAILED

A1. Spinnaker Yachts – 41.8 nm

- After the start, proceed in an easterly direction leaving Menominee Shoal Buoy R “2A” to Starboard.
- Continue southeasterly leaving Green Island and its buoys G “1” and R N “2” to Port.
- Continue northeasterly to the western shore of Door County. Leave Fish Creek Buoy R “6” to Port
- Proceed around Eagle Bluff, leaving it to Starboard.
- Proceed around Horseshoe Island, leaving it to Port.
- Continue northwesterly around the northern side of Chambers Island and North Chambers Island Buoy G “1”, leaving both to Port.
- Proceed to finish as described in SI 8.



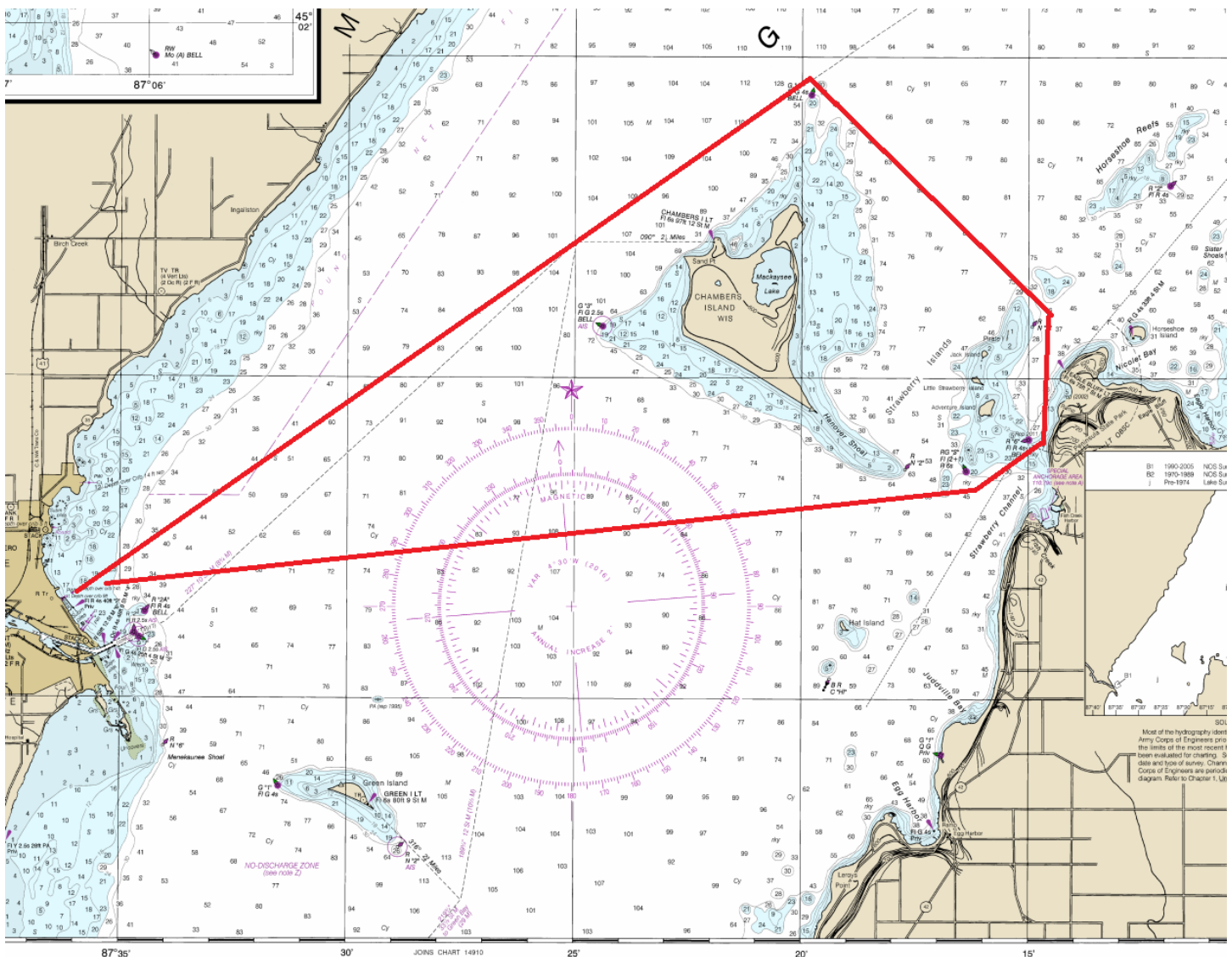
COURSE MAPS ARE APPROXIMATE REPRESENTATIONS. REFER TO THE COURSE DESCRIPTION FOR PROPER SAILING.

SAILING INSTRUCTIONS

APPENDIX A – COURSES TO BE SAILED

A2. Non-Spinnaker Yachts - 35.8 nm

- After the start, proceed to the western shore of Door County, leaving both Fish Creek Buoy RG “S” and R N “6” to Port. Take special care to avoid the shallows around Hanover Shoal and R N “2”
- Continue north to Eagle Bluff Buoy R “4”, leaving it to Port.
- Next, proceed northwesterly to the North Chambers Island Buoy G “1”, leaving both the island and the buoy to Port.
- Finally, proceed southwesterly to the finish as described in SI 8.



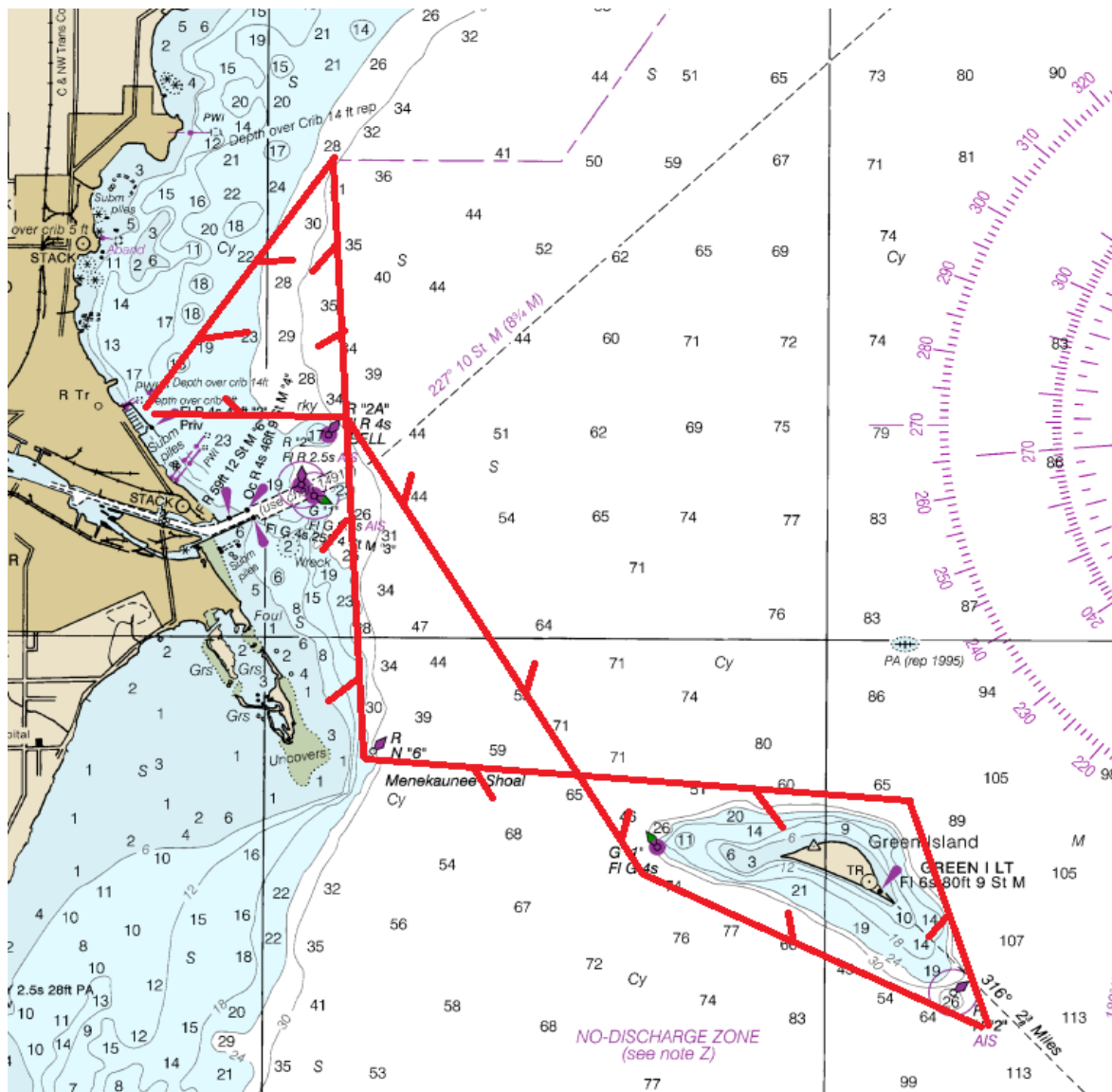
COURSE MAPS ARE APPROXIMATE REPRESENTATIONS. REFER TO THE COURSE DESCRIPTION FOR PROPER SAILING.

SAILING INSTRUCTIONS

APPENDIX A – COURSES TO BE SAILED

A3. Non-Spinnaker Small Boats – 17.0 nm

- After the start, proceed easterly to Menominee Shoal Buoy R “2A”, leaving it to Starboard.
- Next, proceed to Green Island West Shoal Buoy G “1”, and leave it to Port.
- Continue to round Green Island and its East Shoal Buoy R “1”, leaving both to Port.
- Proceed to Menekaunee Shoal Buoy R N “6”, and leave it to Starboard. Note the shallows between this mark and Seagull Bar.
- Next, proceed past Menominee Shoal Buoy R “2A” to the M&M YC Henes Park Buoy (45° 08.136' N, 087° 34.465' W), leaving both to Port.
- Finish as described in SI 8.



COURSE MAPS ARE APPROXIMATE REPRESENTATIONS. REFER TO THE COURSE DESCRIPTION FOR PROPER SAILING.