



seas
Boating for Everyone

Harken Blockheads Lightning Youth World Championship

Sheboygan, Wisconsin, USA

July 5-10, 2022

Organizing Authority (OA): International Lightning Class (ILCA) in conjunction with the Sheboygan Yacht Club, Sail Sheboygan and the Sailing Education Association of Sheboygan

Sailing Instructions

1. RULES

- 1.1. The regatta will be governed by the rules as defined in *The Racing Rules of Sailing*, the *ILCA Constitution* <https://www.lightningclass.org/constitution>, *By-Laws* <https://www.lightningclass.org/bylaws>, *Lightning Specifications* and the *Document Governing All Sanctioned Lightning Class Championships* (**hereafter referred to as Document Governing**) <https://www.lightningclass.org/docgoverning>
- 1.2. Boats are required to carry portable equipment in accordance with the NOR.
- 1.3. Appendix T Arbitration will apply
- 1.4. The rules identified below are changed
 - 1.4.1. RRS 27.3 is changed to add the following: The RC or OA shall not abandon (or cancel) a scheduled race, or races, before the starting signal without approval of the class representative.
 - 1.4.2. RRS 42.3(c) is changed to read: except on a beat to windward, when surfing (rapidly accelerating down the front of a wave) or planning is possible, the boats crew may pull the sheet only, (not the guy), in order to initiate surfing or planning, but each sail may only be pulled once for each wave or gust of wind. When the mainsail is pumped, only that part of the sheet between the crew member handling the sheet and the first block on the boom shall be used.
 - 1.4.3. RRS 44 is changed to add the following: the two turns penalty as provided in RRS 44 will apply with the additional provision that when an infringing yacht has its spinnaker drawing at the time of the infringement, drops it completely (below the gooseneck) while taking her penalty, and resets it immediately and has it drawing after the penalty, the penalty is one turn instead of two.
- 1.5. US Sailing national prescriptions 60.3, 67, and 76.1 shall apply and are listed in Appendix C
- 1.6. If there is a conflict between languages, the English language shall prevail.
- 1.7. For breaches of rules in the notice of race or sailing instructions marked [DP] denotes rules for which the penalty is at the discretion of the International Jury (Protest Committee).

2. NOTICE TO COMPETITORS

2.1. Notices to Competitors will be posted on the official regatta notice board located in the Lowell North Pavilion.

3. CHANGES TO THE SAILING INSTRUCTIONS

3.1. Any changes to the SIs will be posted no later than 0830 on the day it will take effect, except any change to the schedule of races will be posted no later than 2000 on the day before it will take effect.

4. SIGNALS MADE ASHORE

- 4.1. Signals made ashore will be displayed from the Sail Sheboygan Flagpole
- 4.2. When flag AP is displayed ashore, "1 minute" is replaced with "not less than 30 minutes" in the race signal AP
- 4.3. Flag D with one sound means "Boats are allowed to leave the dock for the race area". The warning signal will be made not less than 30 minutes after flag D is displayed. Failure to comply may result in a penalty. DP

5. SAFETY AND PERSONAL EQUIPMENT

- 5.1. Before the warning signal of the first race in which they intend to compete each day, boats shall check in by sailing on starboard tack past the RC signal boat. Each boat shall hail her sail number until acknowledged by the signal boat. Failure to check in may result in a penalty. [DP]
- 5.2. A boat retiring from a race shall notify a RC vessel before leaving the course, or, when that is impossible, immediately after arrival ashore. [DP]
- 5.3. Safety equipment per NOR Addendum.
- 5.4. RRS 40.1 shall be in effect at all times while on the water.

6. SCHEDULE OF RACES

July 5	1700-2000	Registration
July 6	0800-1000 1000 1300 1400	Registration Competitors Briefing Warning signal for the Practice Race Warning signal for first race of the day; subsequent races to follow.
July 7	0845 1000	Competitors Briefing Warning signal for first race of the day; subsequent races to follow.

July 8	0845 1000	Competitors Briefing Warning signal for first race of the day; subsequent races to follow.
July 9	0845 1000 1600 1830	Competitors Briefing Warning signal for first race of the day; subsequent races to follow No warning signal will be made after 1600 Awards and Closing Ceremonies

6.1 To alert boats that a race will begin soon, the orange start line flag will be displayed with several repetitive sounds approximately 1 minute before a warning signal is displayed. Additional repetitive sounds may be given prior to the warning signal.

7. CLASS FLAG

7.1. The class flag will be a white flag with a contrasting lightning bolt or NP 1.

8. RACING AREA

8.1. Appendix A shows the location of the racing area.

9. THE COURSE

9.1. The diagram in Appendix B show the courses, including the course signals, the order in which marks are to be passed, and the side on which each mark is to be left

9.2. No later than the warning signal, the RC signal boat shall display the course designation and the approximate compass bearing of the first leg.

9.3. If one of the gate marks is missing, the mark in position shall be rounded to port.

10. MARKS

10.1. Rounding marks will be orange inflatable tetrahedrons

10.2. Mark 1A (offset) will be an orange or white sphere

10.3. New marks will be yellow inflatable tetrahedrons

10.4. The starting mark will be a yellow tetrahedron or a staff displaying an orange flag on a RC boat at the port end of the line.

10.5. The finishing mark will be an orange or yellow tetrahedron.

11. BREAKDOWN

11.1. A boat shall display a green flag from the backstay to signal a breakdown or damage to the boat and notify the RC upon finishing.

12. THE START

12.1. Races will be started using rule 26 with the warning signal made 5 minutes before the starting signal

12.2. The starting line will be between a staff displaying an orange flag on the RC signal boat and the course side of the yellow starting mark.

12.3. A boat starting later than 4 minutes after her starting signal will be scored DNS. This changes rules 35, 63.1 and A5.

13. RECALLS

- 13.1. The RC will attempt to hail the recall sail numbers of OCS boats after the starting signal. This changes rule 29.1.
- 13.2. The failure of any boat to hear the hail, promptness of the hail, failure to hail any boats, or the order of boats hailed shall not be grounds for redress. This changes rule 62.1
- 13.3. Rule 30.4 is changed to allow the use of either sail number or bow number for identification

14. CHANGE OF THE NEXT LEG OF THE COURSE

- 14.1. To change the next leg of the course, the RC will lay a new mark (or move the finishing line) and remove the old marks as soon as practicable. When in a subsequent change a new mark is replaced, it will be replaced with an original mark
- 14.2. After a change of course for the second windward leg, an offset mark (Mark 1A) will not be used.
- 14.3. Minor adjustments may be made to the course configuration/marks without signaling a course change and this may be done while boats are sailing on the first half of the leg that the mark ends (this changes rule 33).

15. THE FINISH

- 15.1. The finishing line will be between a staff displaying a blue flag on a RC boat and the course side of the designated finish mark.
- 15.2. The finishing mark for course 4 will be a yellow tetrahedron.
- 15.3. The finishing mark for course 5 will be a yellow or orange tetrahedron.

16. PENALTY SYSTEM

- 16.1. RRS 44.1 is changed per class rules as noted in SI 1.4.3.
- 16.2. If Mark 1A is used, boats that break rule 31 or one or more rules of part 2 in an incident while racing at or near mark 1 shall take their penalties per RRS 44.2 after rounding mark 1A.

17. TIME LIMIT

- 17.1. Time limit shall be two hours (2:00). If one boat finishes within this limit, all shall be scored. If no boat completes the first leg within forty-five minutes (0:45), the race shall be abandoned and, if possible, resailed. This changes Article VIII – Racing Conditions 3 of the Documents Governing All Sanctioned Lightning Class Championships.
- 17.2. Finish Window – boats failing to finish within 30 minutes after the first boat sails the course in accordance with rule 28 will be scored TLE without a hearing. This changes rules 35, 63.1, A4 and A5.1

18. PROTESTS AND REQUESTS FOR REDRESS

- 18.1. Protest forms will be available at the jury office and shall be returned to the jury office
- 18.2. The protest time limit is 30 minutes after the RC signal boat docks.
- 18.3. A protest hearing schedule and the location of the hearings will be posted on the

- official notice board no later than 15 minutes following the end of protest time
- 18.4. The decision of the international jury will be final under RRS 70.5
- 18.5. Competitors wishing to file a protest or request for redress shall inform the RC as soon as possible after finishing or retiring from a race. [NP]

19. SCORING

- 19.1. The Low Point System of Appendix A in accordance with the Documents Governing will apply.
- 19.2. Three (3) races are required to be completed to constitute a series.
- 19.3. When fewer than six (6) races have been completed, a boat's series score will be the total of all her race scores. This changes RRS A2
- 19.4. When six (6) or more races have been completed, a boat's series score will be scored per RRS A2
- 19.5. A boat that is scored TLE shall be scored two points more than the last finisher per Article VIII – Racing Conditions 3 of the Documents Governing. This changes RRS A5 and A10

20. REPLACEMENT OF EQUIPMENT

- 20.1. Substitution or repair or replacement of hulls, sails or equipment will not be allowed without prior written approval of the OA. {DP}

21. COACHING, OUTSIDE CONTACT AND SUPPORT BOATS

- 21.1. Support and coach boats must register with the OA during the registration hours
- 21.2. Team leaders, coaches, and other support personnel shall stay outside the racing area (defined as 100 meters outside the lay lines of the course including the start area) and comply with other requirements as specified in the Sailing Instructions. These requirements begin from the start of the first race of the regatta until the finish of the last race of the regatta. Individual competitors may not use support boats at any time during the regatta unless such support is available to all competitors or is authorized by the OA. The penalty for failure to comply with any of these requirements may result in disqualification of all boats associated with the infringing support personnel. [DP]

22. HAUL OUT RESTRICTIONS AND BERTHING

- 22.1. Boats will be dry sailed during the event. Competitors shall not operate the hoist except as directed to assist operators appointed by the OA. [DP]
- 22.2. Boats shall be kept in their assigned places in the boat park during the event. [DP]

23. RADIO AND CELL PHONE COMMUNICATION

- 23.1. Use of handheld VHF radios is permitted for receiving communication from the Race Committee to the competitors.
- 23.2. Except in an emergency, a competitor shall not make or receive voice or data

communication

- 23.3. When a boat uses a VHF radio or cell phone to transmit or received voice or data during a race, other than official RC communications, it shall immediately retire and report to the race committee
- 23.4. The Race Committee will monitor VHF Channel 79A (1079).
- 23.5. Cell phone and GoPro type cameras usage is not allowed while racing.

24. CONDUCT OF COMPETITORS

- 24.1. All competitors are expected to maintain the highest levels of conduct throughout the entire event. Issues of Misconduct will be administered under World Sailing Misconduct Guidance 2021.

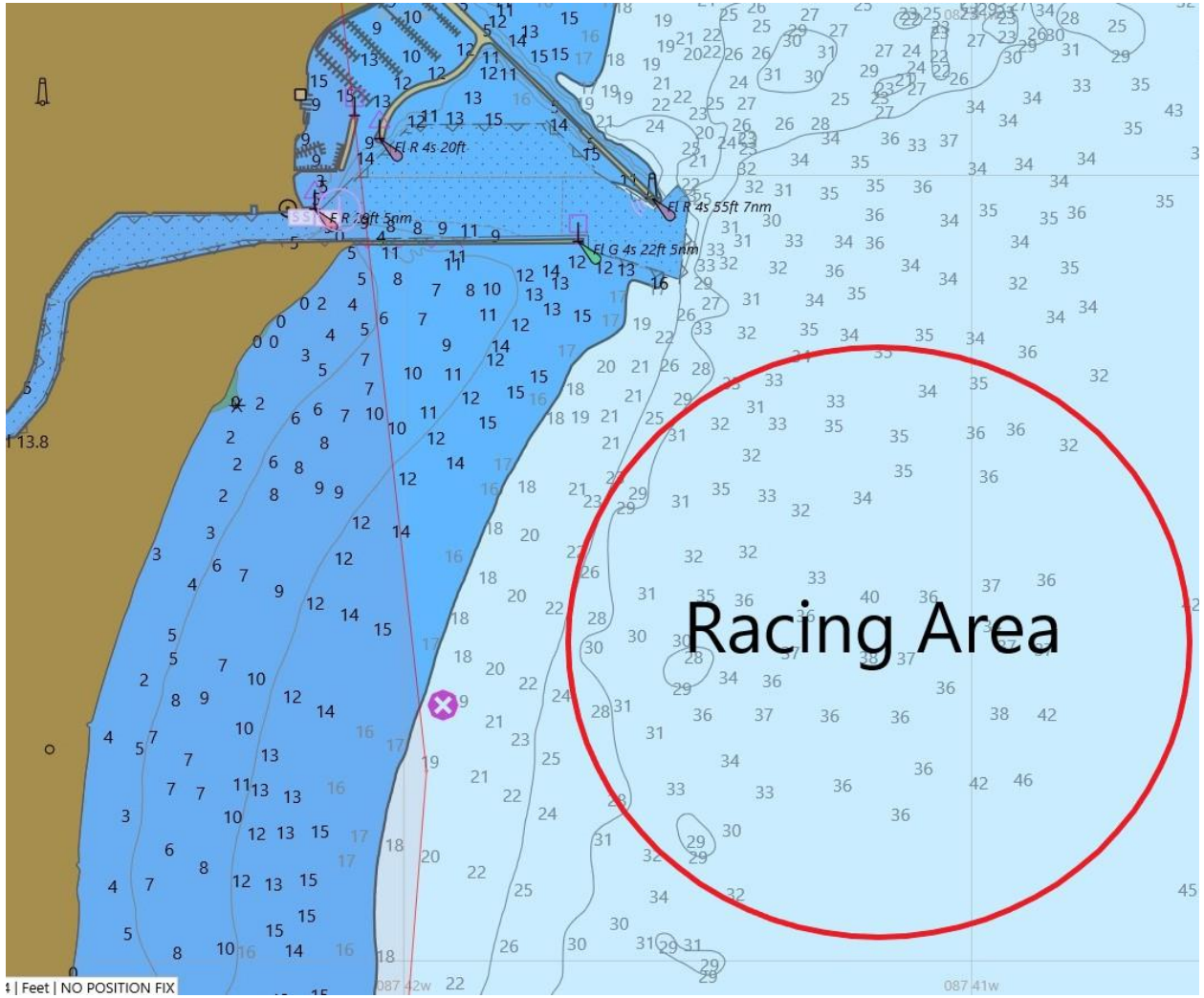
25. PRIZES

- 25.1. Prizes will be awarded as follows:
 - 25.1.1.**Perpetual trophy for the ILCA Youth World Champion
 - 25.1.2.**Trophies for overall places 1st through 5th
 - 25.1.3.**Flags for winners of each race
 - 25.1.4.**Shipshape award
 - 25.1.5.**Thomas Allen Youth Worlds Sportsmanship Award

26. DISCLAIMER OF LIABILITY

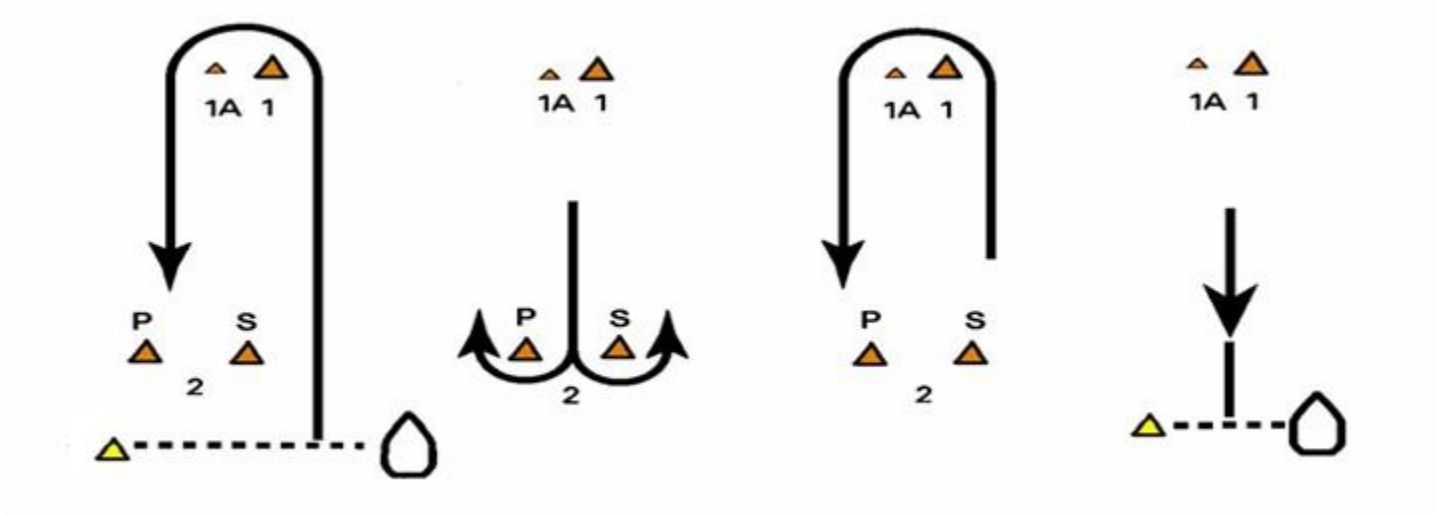
- 26.1. Competitors participate in the regatta entirely at their own risk. See RRS 3, Decision to Race. The organizing authorities will not accept liability for material damage or personal injury or death in conjunction with or prior to, during or after the regatta.

APPENDIX A – RACING AREA

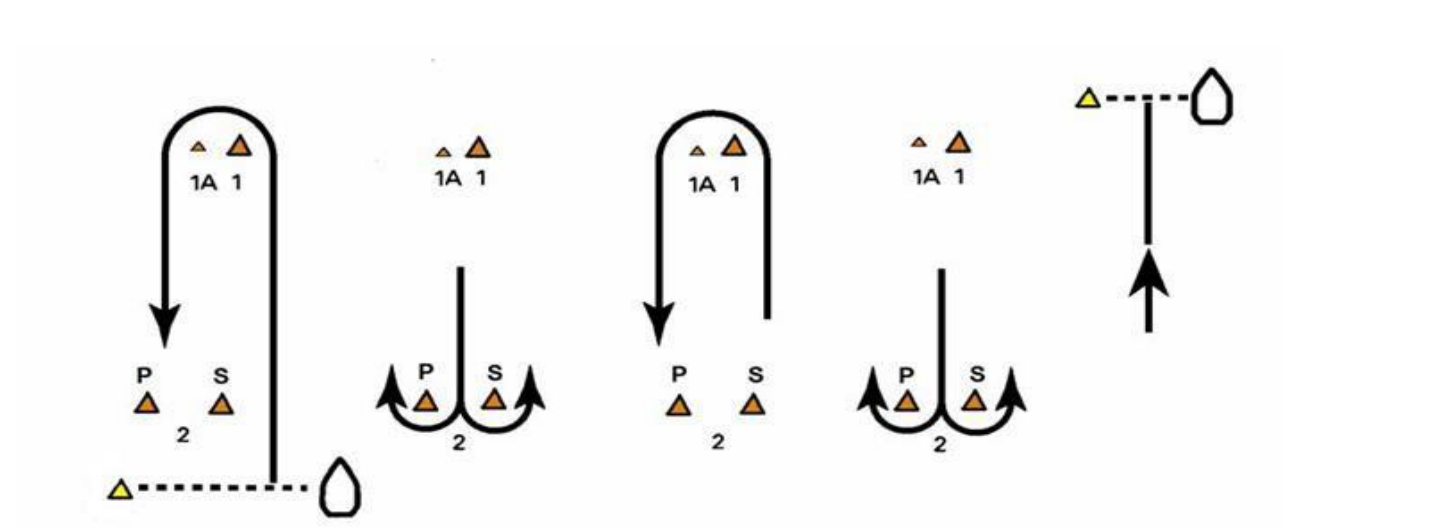


APPENDIX B – COURSE DIAGRAMS

COURSE 4: Start – 1 – 1A – 2P/2S – 1 – 1A - Finish



Course 5: Start - 1 - 1A - 2P/2S - 1 - 1A – 2P/2S – Finish



APPENDIX C: NATIONAL PRESCRIPTIONS

2021-2024 US SAILING PRESCRIPTIONS

Rule 60.3 – After rule 60.3 add

US Sailing prescribes that rule 60.3(b) is changed to
60.3 (b) request redress for a boat or call a hearing to consider redress

Rule 67 – After rule 67 add

US Sailing prescribes that:

- (a) A boat that retires from a race or accepts a penalty does not, by that action alone, admit liability for damages
- (b) . A protest committee shall find facts and make decisions only in compliance with the rules. No protest committee or US Sailing appeal authority shall adjudicate any claim for damages. Such a claim is subject to the jurisdiction of the courts
- (c) A basic purpose of the rules is to prevent contact between boats. By participating in an event governed by the rules, a boat agrees that responsibility for damages arising from any breach of the rules shall be based on fault as determined by application of the rules, and that she shall not be governed by the legal doctrine of ‘assumption of risk’ for monetary damages resulting from contact with other boats.

Rule 76.1 After rule 76.1 add

US Sailing prescribes that an organizing authority or race committee shall not reject or cancel the entry of a boat or exclude a competitor eligible under the notice of race and sailing instructions for an arbitrary or capricious reason or for reason of race, color, religion, national origin, gender, sexual orientation, or age

Appendix D – BOATS AND HANDLING OF BOATS

1. Boats will be provided for all competitors by a system of draw that will be described at the competitors meeting by the OA
2. Boat rotation for each day will be announced each morning
3. Competitors shall not modify the boats or cause them to be modified in any way. The following exceptions and specifications apply
 - a. Wind indicators made of yarn, thread or magnetic tape may be tied to taped on the shrouds
 - b. Hulls, centerboards and rudders may be cleaned with a soft sponge or cloth and water only
 - c. Adhesive tape may be used anywhere above the waterline
 - d. All fittings or equipment (except for the forestay, shrouds and mast blocks) designed to be adjusted may be adjusted provided that the class rules are complied with.
 - e. The backstay may be adjusted
 - f. The forestay, shrouds and mast blocks shall not be adjusted.
 - g. All equipment provided with the boat for sailing purposes shall remain with the boat while afloat
4. The penalty for not complying with the above rules will be disqualification from all races sailed in which the rule was broken
5. Competitors shall report any damage or loss of equipment, however slight, to the inspection committee immediately after securing the boat ashore.