



2022 Cape Dory Typhoon National Championship

June 3 - 5, 2022

Rappahannock River Yacht Club - Irvington, Virginia



NOTICE OF RACE (NoR)

The Rappahannock River Yacht Club (RRYC) and our Typhoon Fleet cordially invite all Cape Dory Typhoon Skippers and Crews to participate in the 2022 National Championship Regatta. Originated in 2011, it is once again RRYC's pleasure to host this now even-year's event, and welcome Typhoon sailors and guests to the beautiful Northern Neck of Virginia.

1. Venue:

The Rappahannock River Yacht Club on Carters Creek in Irvington, Virginia, and the waters of the Rappahannock River between the Robert O. Norris Bridge and Towles Point. See Appendix A – Typhoon Racing Area.

2. Rules:

The regatta will be governed by the Racing Rules of Sailing, 2021 - 2024 (RRS), the United States Sailing Association Prescriptions, the Sailing Instructions (SIs) and Appendix B - Typhoon Fleet Equipment Rules. RRYC is the organizing authority for the Regatta. These documents may be viewed and downloaded from the “2022 Cape Dory Typhoon National Championship” portal on yachtscoring.com.

3. Eligibility and Registration:

The regatta is open to all Cape Dory Typhoon Weekender, Daysailer, and Open models which shall race without handicaps. Eligible boats may enter by completing the Entry Form and paying the required fee by credit card online at yachtscoring.com. Click on the “2022 Cape Dory Typhoon National Championship” portal on yachtscoring.com and click on the link to “Online Registration Form” and follow the instructions. This is the only method of entry and a boat will not be considered as “Entered” until payment is received. The exact URL for registration is https://yachtscoring.com/event_registration_email.cfm?eid=14877

Entries must be received by 2000 on May 15, 2022

Late Entries will be charged a \$20.00 late fee

No entries will be accepted after May 31, 2022

All ‘Entered Boats’ must complete their Check-in by 2000 on Friday, June 3, 2022

4. Entry Fee:

The Entry Fee of US \$95 includes Trophies, Breakfasts, Friday and Saturday night socials and the Prizegiving Ceremony for two people per boat. Additional guests are welcome at the evening social events and tickets are available with the entry form on the yachtscoring.com website. Additional guests need to be added by May 31, 2022.

4.1 Cancellation of regatta due to COVID: In the event that the regatta is cancelled due to COVID there will be a full refund of the Entry Fee. The COVID cancellation risk makes it necessary to order merchandise at the Regatta which will then be mailed rather than ordering at the time of entry.

5. Fleets:

The regatta will be divided into two fleets:

Championship Fleet: Experienced racers competing for the National Championship. As a guide, the Championship Fleet would be the appropriate nomination for a sailor meeting any of the following criteria:

- Placed in the top five in a Ty class race series or Championship Fleet regatta
- Having won a previous Corinthian Fleet regatta
- Placed in the top three in their class in a PHRF regatta or club series

Corinthian Fleet: The spirit of this fleet is to create exciting and competitive racing for sailors who are less experienced and less accustomed to finishing at the top of the fleet.

Please nominate your Fleet preference on the registration form. A final decision regarding Fleet composition will be made at the sole discretion of the PRO and announced at Registration on the Friday night and posted on the Official Notice Board at yachtscoring.com.

6. Schedule Of Races:

Wednesday, June 1

RRYC Wednesday Night Typhoon Regatta Practice Races -- open to all Typhoon racers. Practice races will only be scored as part of the RRYC Typhoon Spring Series.

1800 Intended Warning for first race

Friday, June 3

1800 Check- In / Welcome Party / Cook Out
Sponsored by Jerry Latell of Evolution Sails Virginia

Saturday, June 4

0730 Breakfast
0800 **Mandatory** Competitor's Briefing
1000 Intended Warning for first race
1800 Reception / Dinner

Sunday, June 5

0730 Breakfast
0800 Competitor's Briefing
1000 Intended Warning for first race
1300 No Warning Signal after this time
1600 Prizes

Races

Five (5) races are planned, with the maximum of four (4) on Saturday and three (3) on Sunday, at the discretion of the Race Committee (if four races are completed on Saturday, there will be two (2) races planned on Sunday, adding a sixth race to the series). One (1) race shall constitute a series.

7. Sailing Instructions:

The Sailing Instructions (SIs) will be available in advance on *yachtscoring.com* as well as at check-in on June 3rd. *Yachtscoring.com* will maintain the latest update to all Regatta documents including SIs in the “2022 Cape Dory Typhoon National Championship” portal.

8. Prizes

8.1 Trophies for 1st through 4th places are planned in both the Championship and Corinthian Fleets. However, the number of awards after 1st place depends on the number of entries. The National Champion from the Championship Fleet will be recognized on the Rappahannock River Typhoon Fleet Founder's Trophy.

8.2 The Cape Dory Sailboat Owners Association (CDSOA) – Chesapeake Bay Fleet will present the *Carl Alberg Trophy*, named for the designer of the Cape Dory Typhoon, to the top performing **CDSOA MEMBER** in each fleet.

9. Insurance:

Each participating boat and competitor shall be insured with valid third-party liability insurance with a minimum cover of \$300,000 per incident or the equivalent.

10. Risk Statement:

Competitors participate in the regatta entirely at their own risk. **RRS 3 – DECISION TO RACE** states: “The responsibility for a boat’s decision to participate in a race or to continue to race is hers alone.’ By participating in this event each competitor agrees and acknowledges that sailing is a potentially dangerous activity with inherent risks. These risks include strong winds and rough seas, sudden changes in weather, failure of equipment, boat handling errors, poor seamanship by other boats, loss of balance on an unstable platform and fatigue resulting in increased risk of injury. Inherent in the sport of sailing is the risk of permanent, catastrophic injury or death by drowning, trauma, hypothermia or other causes.”

11. Disclaimer of Liability:

The organizing authority and any other affiliated organization or official or volunteer will not accept any liability for material damage or personal injury, or death sustained in conjunction with or prior to, during, or after this regatta on the water or ashore.

12. Safety Inspection:

The Regatta organizers may conduct random equipment inspections to help ensure the safety of the boats.

13. Helpful Information For Competitors:

“Helpful information For Competitors.pdf”, oriented for those visiting from outside the area, is included within the ‘2022 Cape Dory Typhoon National Championship’ portal of the *yachtscoring.com* website.

14. Contacts:

Registration & Visitors Concierge

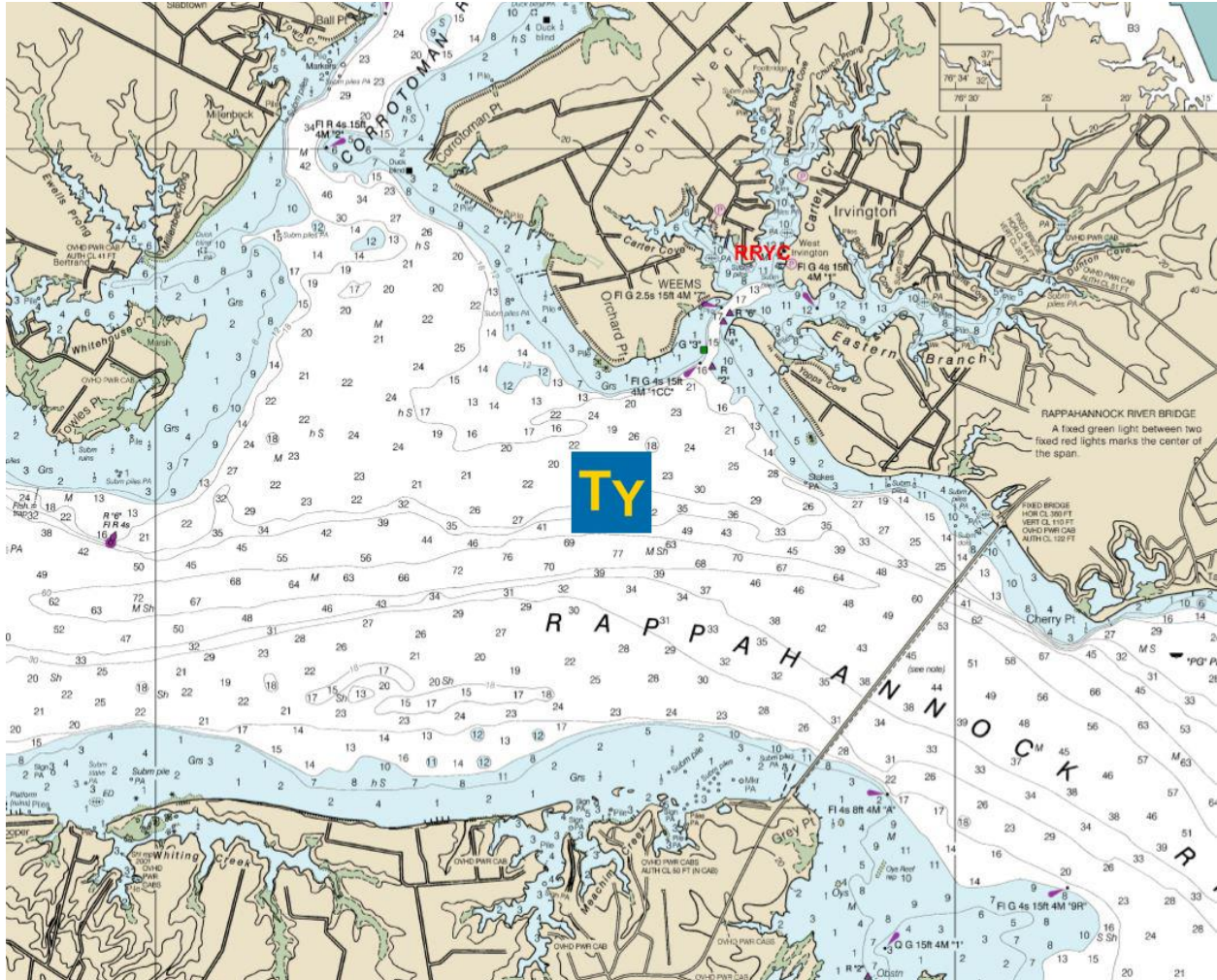
Ingrid Buell, (804) 402 7609, rbuell01@comcast.net

Regatta Chairman

Shaun Thaxter, (804) 690 9241, shaun.thaxter@icloud.com

APPENDIX A

Typhoon Racing Area



Rappahannock River Yacht Club

100 Rappahannock Rd.

Irvington, VA 22480

37° 39.408' N 076° 26.128' W

APPENDIX B

RRYC Typhoon Fleet - Equipment Rules

Crew: Two crew minimum (Captain and at least one crew). Can be different crew each day.

Basic Rule: Except for original design variations associated with the three eligible models there shall be no additional variations in the hull, deck, keel, rudder, spar construction, weight, weight distribution, sail plan and equipment unless permitted by these rules.

Sails: Boats are limited to 3 sails while racing: a Mainsail, a Genoa, and a Jib. All sails shall be constructed from polyester or Pentex fibers. Only one headsail may be flown at any time (no double headsails downwind). All sails shall not exceed the size requirements as outlined in PHRF of the Chesapeake Standard Sail and Equipment Specifications. Further:

Mainsail: The mainsail shall have **SAIL NUMBERS**, starboard and port, not less than 12" tall representing the Typhoon hull number. The mainsail shall have at least one reef point and may have up to four battens.

Genoa: The genoa shall not exceed 155% LP. The genoa may have visibility window(s), tell tales, a leech line, and a foot line. The genoa may be hanked on the forestay or run up the groove of a roller furler.

Jib: The jib may be sheeted inside or outside the side stays. The jib shall not exceed 110% LP and may have no more than 4 battens. It may have leech and foot lines, tell tales, and windows.

Equipment:

Equipment Required by U.S. Coast Guard Safety Regulations for boats 16 to Under 26 feet

State Registration - A Certificate of Number or State Registration must be on board while the boat is in use.

State Numbering or Letters - Must be in contrasting color to the boat, not less than 3 inches in height, and located on each side of the forward part of the boat. It must also have a state decal within six inches of the registration number.

Personal Floatation Device - One type of Coast Guard approved life jacket must be on board for each person on the boat. Also must have one Type IV throwable type of PFD.

Visual Distress Signal - One orange distress flag and one electric distress light, **or** three handheld or floating orange smoke signals and one electric distress light, **or** three combination day/night red flares: hand-held, meteor or parachute type.

Fire Extinguisher - One Marine Type USCG B-1 fire extinguisher.

Sound Producing Device - A sufficient way to make a sound signal, like an air horn, whistle or bell.

Navigation Lights - (Permanent or Portable) Required to be displayed sunset to sunrise

- Continued -

Required Typhoon Fleet Racing Equipment (in addition to U.S. Coast Guard Regulations)

- At least one marine compass
- One flashlight
- One first aid kit
- One paddle
- One operational outboard motor which may be stored in the boat or on the stern while racing
- One marine bilge pump which may be portable
- One bailing bucket
- **Marine VHF radio capable of receiving/transmitting on all U.S. channels**
- An anchor, chain, and rode to the owner's requirements

Optional Permitted Equipment. The following are permitted while racing:

- Bow pulpit, life lines and stern rail to meet owner's requirements
- The length and location of genoa and jib tracks
- One mechanical masthead wind indicator
- Electronic watches and timers
- Digital electronic compasses and instruments to calculate speed and water depth.
- Position sensing devices are permitted provided that the charting capabilities, location of marks (starting line, course, or other) ,correlations between time and distance, display of position or velocity made good are not used on board.
- Additional safety equipment and devices to the owner's requirements
- Additional blocks and cleats port and starboard to the owner's requirements
- Additional drilled holes in jib or genoa tracks
- Addition of coach roof support in Weekender models
- Interior berth and cockpit cushions
- Adjustable outhaul and Cunningham on the mainsail, boom vang, and mainsheet traveler
- Roller furling Head Sails
- Jiffy reefing and/or lazy jacks
- Boat ladder
- Any other personal equipment not prohibited by these rules.

No adjustments to the standing rigging while racing is permitted except for emergency and/or temporary repairs and except for the backstay turnbuckle or its equivalent. A remotely adjustable device consisting of an upper fiddle block and a lower fiddle block with cam cleat may be installed in lieu of the backstay turnbuckle, whose purpose is to facilitate backstay tension, provided it cannot be adjusted more than 3 inches.

One whisker pole up to 150% of the J which means 9 ft - 3 inches for Weekender models and 10 ft - 4 inches for the Daysailer and Open models. The whisker pole shall be attached to the mast (Rule 55.2). The pole may not be attached to a side stay. The whisker pole may NOT be handheld.