

HELLY HANSEN



SAILING WORLD

REGATTA SERIES

Amendment #1 to the Sailing Instructions

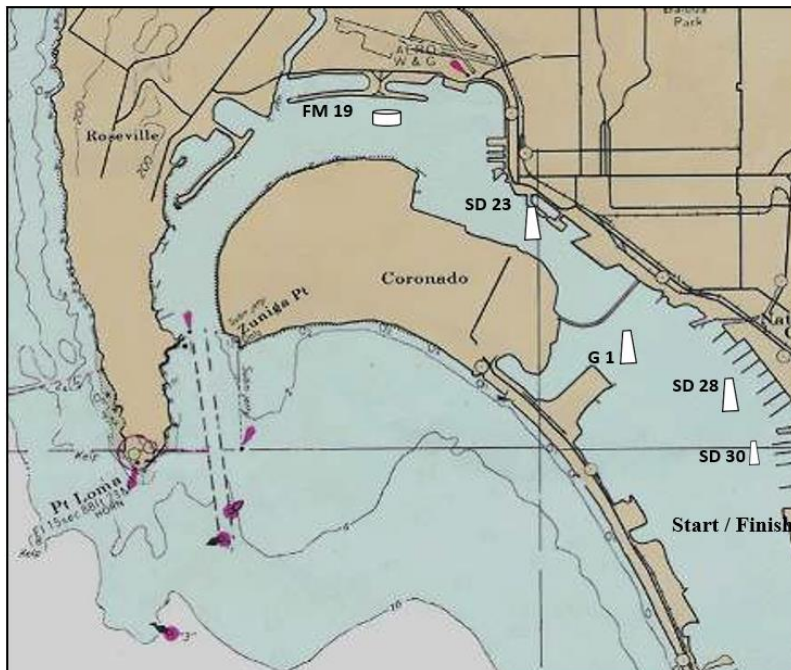
For Circle B - South Bay only

Sailing Instruction 9, and the Course Diagrams/Descriptions are changed to **add a weather offset mark**, which shall be rounded immediately following mark 1. Both mark 1 and the offset shall be rounded to port. The offset mark will be a **green inflatable cube**.

The following courses are added for the I/14 fleet:

Course #A – Start, 1 (windward, offset), 2 (leeward), FM 19 to port, (8'+ white steel mooring buoy located near the east end of Harbor Island), finish (at RC signal boat near leeward Mark 2). Approximately 10 miles.

Course #C - Start, 1 (windward, offset), 2 (leeward), FM 19 to port, (8'+ white steel mooring buoy located near the east end of Harbor Island), SD "23" to port (located near the entrance to the Marriot Marina), FM 19 to port, finish (at RC signal boat near leeward Mark 2). Approximately 14 miles.



Becky Ashburn
Race Management for the
Helly Hansen Sailing World Regatta Series