

Charlottetown Race Week 2022

Thursday, July 14 - Saturday, July 16, 2022

Organizing Authority: Charlottetown Yacht Club

Location: Charlottetown, Prince Edward Island, Canada



SAILING INSTRUCTIONS

1. RULES

- 1.1. The regatta will be governed by the rules as defined in The Racing Rules of Sailing.
- 1.2. Sail Canada prescriptions will apply.
- 1.3. All aspects of current CYC bylaws and code of conduct shall apply.
- 1.4. One Design class rules shall be in effect for One Design classes.
- 1.5. PHRF entries shall compete with the equipment that is in compliance with their current PHRF certificate.
- 1.6. Racing participants are to follow PEI Public Health directives and club notices related to COVID-19, as required.
- 1.7. These Sailing Instructions, including amendments, will take precedence in the case of a conflict with the Notice of Race. This changes RRS 63.7

2. NOTICES TO COMPETITORS

- 2.1. The online official notice board is located at [Yacht Scoring website](#). Notices to competitors may also be posted on the unofficial notice board located on the porch of the Charlottetown Yacht Club.

3. CHANGES TO SAILING INSTRUCTIONS

- 3.1. Any change to the sailing instructions will be posted before 0900 hrs on the day it will take effect, except that any change to the schedule of races will be posted by 2000 hrs on the day before it will take effect.

4. SIGNALS MADE ASHORE

- 4.1. Signals made ashore will be displayed on the CYC flag pole.
- 4.2. When flag AP is displayed ashore, "1 minute" is replaced with "not less than 60 minutes" in the race signal AP. This changes Race Signals.
- 4.3. Code flag "L", with one sound signal means "A notice to competitors has been posted on the official notice board".

5. SCHEDULE

- 5.1. Boat check-in and late registration at CYC Great Hall will be held:
Wednesday, July 13th 1730 - 2100 hrs
Thursday, July 14th 0800 - 0900 hrs
- 5.2. There will be three (3) days of racing: Thursday, July 14th, Friday, July 15th, Saturday, July 16th
- 5.3. Fleet captains are invited to discuss the upcoming day and any issues with the Principal Race Officer (PRO) between 0830 and 0900 hrs on each day of racing.
- 5.4. A skippers meeting will be held at 0900 hrs on the first day of racing.
- 5.5. The first warning signal will be 1100 hrs on each day of racing.
- 5.6. The number of races is nine (9). Maximum four (4) races per day.
- 5.7. On the last day of racing no races will be started after 1600 hrs.

6. ELIGIBILITY AND ENTRY

- 6.1. The regatta is open to all monohull handicap boats, which have a valid Sail Nova Scotia PHRF rating, and to boats of the Farr 30, J/70, and Etchell classes (One Design).
- 6.2. PHRF entries without a valid Sail Nova Scotia PHRF rating certificate must make arrangements with the Authority for measurement prior to 09:00 July 13th 2022.
- 6.3. All competitors shall check-in at the registration desk to sign 2022 code of conduct and competitors waiver.

7. FLEETS

- 7.1. Class splits and One Design fleets will be made at the discretion of the Organizing Authority.
- 7.2. Unless otherwise approved by the Regatta Chair, all One Design classes must have a minimum of four (4) boats to be considered for a separate start.
- 7.3. Boats not part of a One Design fleet will sail in their respective PHRF class. Class names, identification, and their rating ranges will be posted on the official notice board.
- 7.4. Class flags for the One Design will be the fleet's specific class insignia.
- 7.5. PHRF Class flags are assigned as follows:

PHRF "A" class	Yellow flag
PHRF "B" class	Green flag

8. COURSES AND RACING AREAS

- 8.1. All fleets will race either outside or inside the harbour, depending on conditions, using fixed marks, inflatable marks, or floating staffs.

There are two possible course configurations: **Windward/Leeward** and **Around the Buoys**.

For Windward/Leeward courses, the diagrams in *Appendix C* show the course configurations. This includes the order in which marks are to be passed and the side on which each mark is to be left for L or LA course configuration. The race committee will display no later than the warning signal the course to be sailed. On a best effort basis, the race committee will display an approximate bearing to the first mark.

For Around the Buoys courses, the race committee signal boat will display a course board mounted on the stern before the warning signal. The course will use navigational buoys for marks as described in Appendix A and B. When a triangle with the letter 'Y' or 'O' inside of it appears on the course board as a mark of the course, it shall indicate that the mark is either a yellow (Y) or an orange (O) inflatable tetrahedron. All marks of the course will be followed by either the letter 'P' indicating that the mark shall be left to port, or 'S' indicating that the mark shall be left to starboard.

See *Appendix A: Racing Area - Hillsborough Bay* and *Appendix B: Racing Area - Charlottetown Harbour*.

9. MARKS

9.1. The mark descriptions for One Design fleets are as follows:

Mark	Description
Starting / Finishing	Orange 5' Tetrahedron
Windward Mark 1 (Farr30)	Orange 8' Tetrahedron
Windward Mark 1 (J/70 & Etchell)	Yellow 8' Tetrahedron
Offset Mark 1A (if applicable)	Yellow 2' Tetrahedron
New Windward Mark (Farr 30)	Orange 5' Tetrahedron w/ red dot
New Windward Mark (J/70 & Etchell)	Yellow 5' Tetrahedron w/ black dot
Leeward Gate	Yellow Inflatable Cylinders

9.2. The mark descriptions for PHRF fleets are as follows:

Mark	Description
Starting / Finishing	Orange Flags on Floating Staff
Windward Mark 1 (A class)	Orange 8' Tetrahedron
Windward Mark 1 (B class)	Yellow 8' Tetrahedron
New Windward Mark (A class)	Orange 5' Tetrahedron
New Windward Mark (B class)	Yellow 5' Tetrahedron
Leeward Gate	Yellow Inflatable Cylinders

9.3. Any guard mark or small vessel attached to the signal boat shall be considered as a permanent attachment, and is considered a permanent part of the Committee boat.

10. THE START AND CHECK IN

10.1. The starting line will be between the staff flying an orange flag on the signal boat at the starboard end and the starting mark at the port end.

- 10.2. Each day prior to the first race, all boats shall report their participation to Race Committee. Competitors shall check-in with the committee boat by passing aft and stating their name and the number of people onboard.
- 10.3. A boat starting later than 4 minutes after her starting signal will be scored Did Not Start, (DNS). This changes RRS A4. After finishing and upon determining that there will be another race, boats shall sail immediately to the vicinity of the starting area, an orange flag will be used to indicate another start will take place. The Race Committee intends to start a fleet that has finished as soon as possible, even if other fleets are still racing.

11. RECALLS

- 11.1. In the event of an individual recall, the sail numbers, identification of any boat or boats that are identified as OCS may be announced on the Race Committee VHF channel. Failure of a boat to see or hear her recall notification, and the timing and order of such hails, or the length of time it takes to make a notification on the VHF radio will not be grounds for redress. This changes RRS 62.1.

12. CHANGE OF THE NEXT LEG OF THE COURSE

- 12.1. To change the next leg of the course for L or LA Course Configurations, the race committee will lay a new mark (or move the finishing line) and remove the original mark as soon as practicable. When in a subsequent change a new mark is replaced, it will be replaced by an original mark.
- 12.2. For LA course configurations, if the new mark is used for the second or subsequent rounding of Mark 1, there will be no offset mark 1a.
- 12.3. To change the course for 'round-the-buoys' races, the Race Committee will signal the change accordingly and display the new course to be sailed on a white board located on the Race Committee vessel signalling the change. This changes RRS 33

13. THE FINISH

- 13.1. The finish line will be between a staff displaying a blue flag on the signal boat, and a finishing mark off the starboard side of the signal boat.

14. TIME LIMITS AND TARGET TIME

- 14.1. The target time will be 50 minutes for all classes.
- 14.2. The time limit for the first boat to round the first mark will be 30 minutes. If no boat has passed Mark 1 within the time limit the race will be abandoned. This time limit only applies to windward/leeward course configurations.
- 14.3. One design boats failing to finish within 30 minutes after the first boat sails the course and finishes will be scored Did Not Finish without a hearing. This changes Rules 35, A4.1 and A5

15. PENALTY SYSTEM

- 15.1. The first two sentences of RRS 44.1 are changed to: "A boat may take a one turn penalty when she may have broken a rule of RRS Part 2 or Rule 31 while racing. However, when she may have broken a rule of Part 2 while in the zone around marks other than a starting mark her penalty shall be a two turns penalty."
- 15.2. The penalty, if any, for a violation of a rule other than a rule of RRS Part 2 or Rule 31 will be at the discretion of the Protest Committee and may be other than disqualification. This changes RRS 64.1(a).

16. PROTESTS AND REQUESTS FOR REDRESS

- 16.1. Protest forms are available on the official notice board. Protests and requests for redress or reopening shall be delivered to the PRO within the appropriate time limit.
- 16.2. Any protests or requests for redress shall be delivered in writing no later than 60 minutes after the docking of the respective course signal boat at the Charlottetown Yacht Club. The arrival time of the signal boat will be noted on the official notice board.
- 16.3. Notices of protests by the race committee or protest committee will be posted to inform boats under RRS 61.1(b).
- 16.4. Penalties for breaking a rule other than those of RRS Part 2 will be determined by the protest committee. This changes RRS 60.1(a). Penalties for these breaches may be less than disqualification if the protest committee so decides. The scoring abbreviation for a discretionary penalty imposed under this instruction will be DPI.
- 16.5. On the last scheduled day of racing a request for reopening a hearing shall be delivered (a) within the protest time limit if the requesting party was informed of the decision on the previous day; (b) no later than 30 minutes after the requesting party was informed of the decision on that day. This changes RRS 66
- 16.6. On the last scheduled day of racing a request for redress based on a protest committee decision shall be delivered no later than 30 minutes after the decision was posted. This changes RRS 62.2
- 16.7. Arbitration
 - 16.7.1. For a protest between two boats alleging a breach of a rule of RRS Part 2 or Rule 31, an arbitration meeting may be held prior to any protest hearing.
 - 16.7.2. One representative from each boat will meet with the arbitrator. No witnesses will be permitted.
 - 16.7.3. The arbitrator will advise on whether: (a) One or both boats should take a penalty; (b) The protest should be withdrawn; or (c) The protest should go to the protest committee for a hearing.

- 16.7.4. When a boat accepts a penalty or the arbitrator advises that the protest should be withdrawn, the arbitrator will allow the protest to be withdrawn. This changes RRS 63.1.
- 16.7.5. When a protest is withdrawn, it will not be reopened or made the subject of a request for redress.
- 16.7.6. A yacht that accepts arbitration judgement shall be given a scoring penalty of 40%. If the yacht caused injury or serious damage or gained a significant advantage in the race or series by the breach, the penalty shall be to retire.

17. SCORING

- 17.1. The low point system of RRS Appendix A will apply.
- 17.2. One race is required to constitute a series.
- 17.3. When five (5) or more races have been completed, a boat's series score will be the total of her race scores excluding her worst score.

18. RADIO COMMUNICATION

- 18.1. All Vessels shall carry on board a functioning VHF radio. Except in an emergency or communication by the Race Committee, a boat shall neither make radio transmissions while racing nor receive radio communication not available to all other boats. This restriction also applies to mobile telephones and other communication devices.
- 18.2. The Race Committee may broadcast information about the day's racing and OCS on the designated course VHF channel. The failure of any boat to hear the hail, the hail of some but not all OCS boats, the untimely hail of some or all OCS boats, or failure to hail any or all boats shall not be grounds for redress. This changes RRS 62.1
- 18.3. VHF channels will be 71 for One Design and 72 for PHRF.

19. DIVING AND HAUL OUT RESTRICTIONS

- 19.1. No boats shall be hauled out during the regatta without valid reason and permission from the race committee.
- 19.2. No underwater breathing apparatus or plastic pools or their equivalent shall be used during the duration of the regatta.

20. SAFETY REQUIREMENTS

- 20.1. A boat that retires from a race or does not intend to start a scheduled race shall promptly report this to the Race Committee. If this is not possible, she shall promptly report her actions to the Race Office upon returning to shore.
- 20.2. All boats are required to carry onboard the necessary safety equipment as per the Class rules.

Verification of compliance to these requirements may be carried out before or during the Regatta, on a random boat basis.

21. RIGHTS TO USE NAME AND LIKENESS

- 21.1. In participating in the event, a competitor automatically grant the organizing authority and the sponsors of the event the unrestricted right and permission to use the name and/or image for any text, photograph or video footage of either themselves or the boat they are sailing during the event to be published or broadcast in any media whatsoever (including but not limited to press, television, or internet), for either editorial or advertising purposes or to be used in press information.

22. CLEAN REGATTA

- 22.1. Charlottetown Race Week is focused on implementing best practices to be a certified clean regatta. As participants, we appreciate your support and respect in maintaining our environment. This includes best practices around managing your bottle and can recycling, reducing paper and garbage, as well as preventing any waste in our waters.

23. PRIZES

- 23.1. Overall 1st, 2nd, 3rd for each fleet will be presented at the awards ceremony at the end of the Regatta.

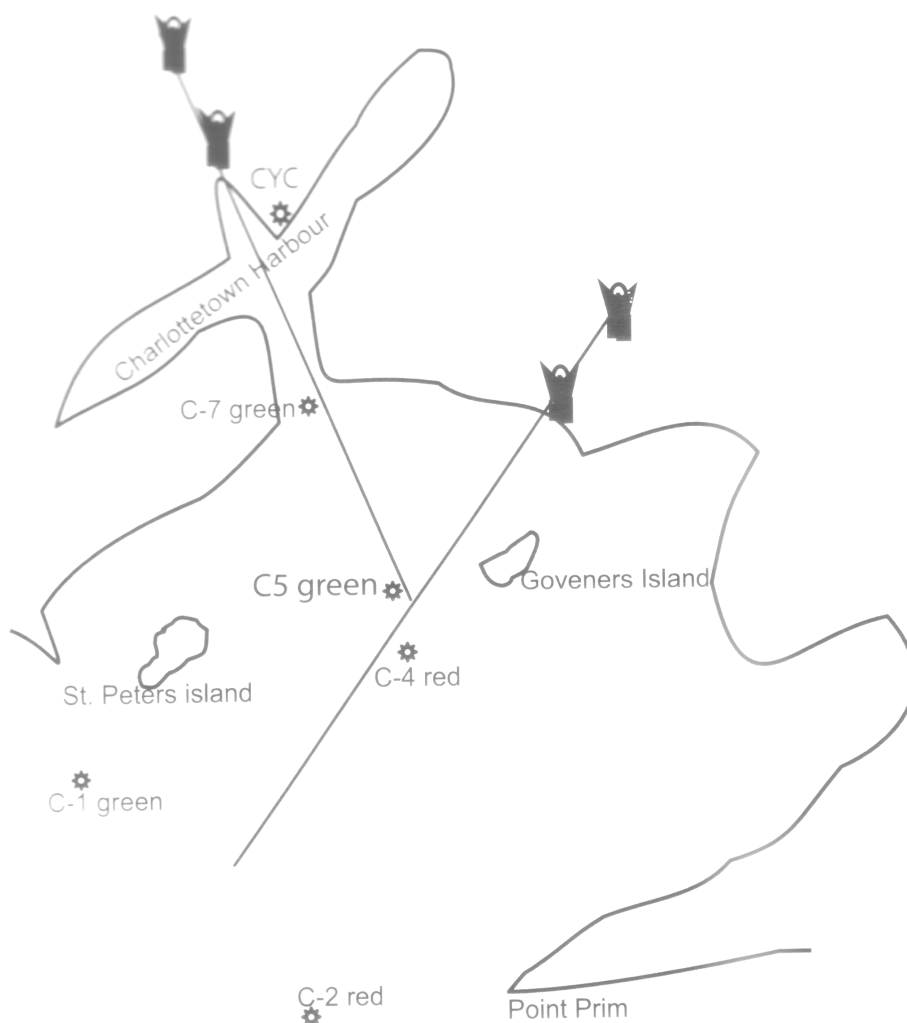
24. DISCLAIMER OF LIABILITY

- 24.1. All Competitors that participate in the regatta do so entirely at their own risk. See RRS 4, Decision to Race. The CYC and the Race week organizing authority will not accept any liability for material damage or personal injury or death sustained in conjunction with or prior to, during, or after the regatta.

25. INSURANCE

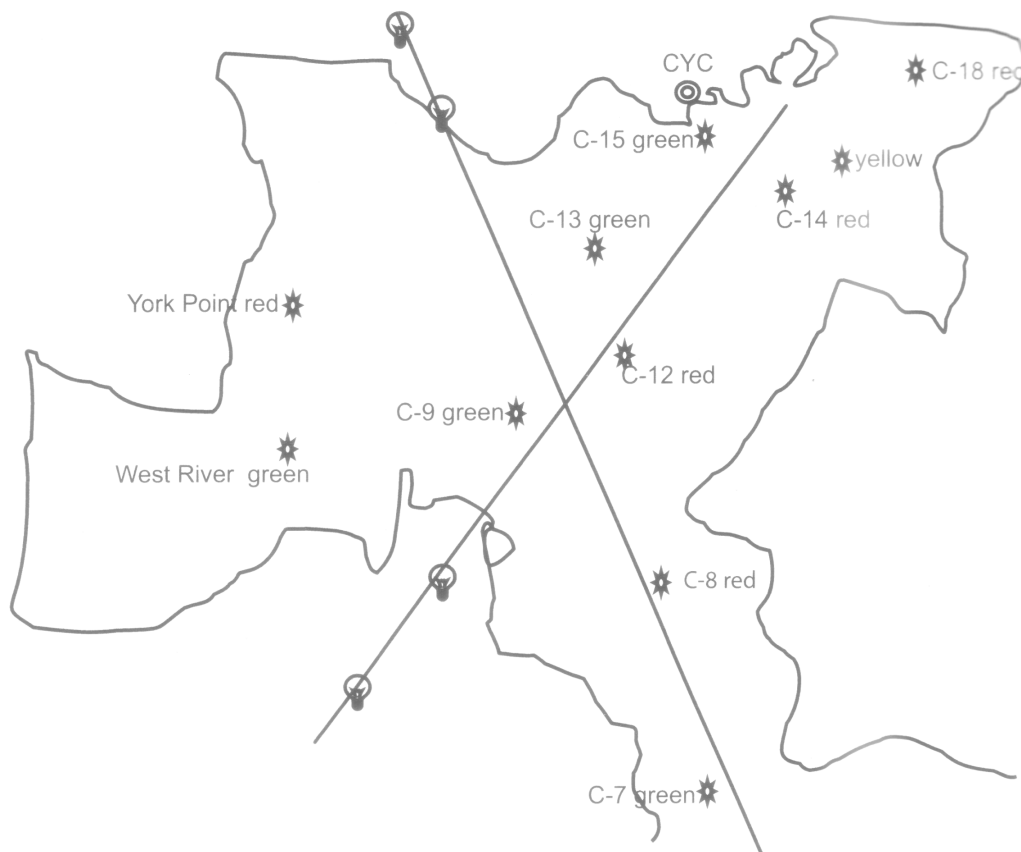
- 25.1. Each participating boat shall be insured with valid third party liability insurance with a minimum coverage of \$1,000,000 CAD per incident or the equivalent and shall provide proof of such to the Race Committee when registering. Entrants are encouraged to notify their insurance carrier of participation in this event and the rules governing it.

Appendix A: Racing Area - Hillsborough Bay



	Lat	Long	
C-1	46 05 00	63 13 48	St Peters Island
C-2	46 02 40	63 06 50	Point Prim
C-4	46 07 55	63 06 42	Fitzroy Rock
C-5	46 08 54	63 06 04	Spithead
C-7	46 11 36	63 07 36	Blockhouse

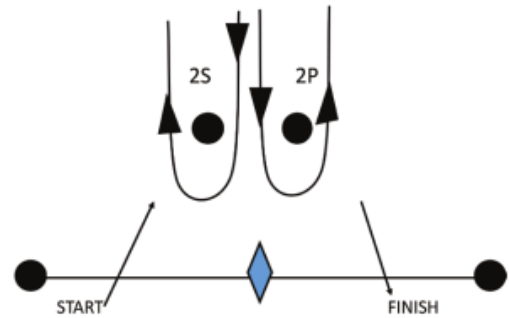
Appendix B: Racing Area - Charlottetown Harbour



	Lat	Long	
C-7	46 11 36	63 07 36	Blockhouse
C-8	46 12 14.5	63 07 54	Battery
C-9	46 12 37.5	63 08 09	Canceaux
C-12	46 12 54	63 07 51	Rosebank
C-13	46 13 17	63 07 54	Middle Ground
C-14	46 13 28	63 07 25.5	CYC Red
C-15	46 13 40	63 07 32.5	CYC Green
C-18	46 13 46.5	63 06 47	Railway

Appendix C: Course Diagram

Course L: Windward/Leeward, Leeward Finish	
Signal	Mark Rounding Order
L1	Start - 1 - Finish
L2	Start - 1 - 2s/2p - 1 - Finish
L3	Start - 1 - 2s/2p - 1 - 2s/2p - 1 - Finish
L4	Start - 1 - 2s/2p - 1 - 2s/2p - 1 - 2s/2p - 1 - Finish



Course LA: Windward/Leeward with offset mark, Leeward Finish	
Signal	Mark Rounding Order
LA1	Start - 1 - 1A - Finish
LA2	Start - 1 - 1A - 2s/2p - 1 - 1A - Finish
LA3	Start - 1 - 1A - 2s/2p - 1 - 1A - 2s/2p - 1 - 1A - Finish
LA4	Start - 1 - 1A - 2s/2p - 1 - 1A - 2s/2p - 1 - 1A - 2s/2p - 1 - 1A - Finish

