



NYYC One-Design Regatta

**Newport, Rhode Island
August 21-22, 2021**

SAILING INSTRUCTIONS

1 RULES

- 1.1** The regatta will be governed by the rules as defined in the current Racing Rules of Sailing (RRS) and Class Rules for one-design classes.
- 1.2** US Sailing Prescription 63.2 is deleted.
- 1.3** If there is a conflict between rules or regulations, other than RRS, the sailing instructions will prevail. This changes RRS 63.7.
- 1.4** All competing boats shall carry a handheld VHF radio for safety purposes and Race Committee communication.

2 COMMUNICATION: NOTICES, ANNOUNCEMENTS, VHF CHANNELS

- 2.1** Notices, including race documents, amendments and results, will be posted on the Official Notice Board located in the courtyard at the NYYC Sailing Center at Harbour Court and may also be posted on the event website at www.nyyc.org.
- 2.2** Any change to the sailing instructions will be posted before 0900 hours on the day it will take effect, except that any change to the schedule of races will be posted by 2000 hours on the day before it will take effect.
- 2.3** In addition to the signals made in SI 3.3, the Race Committee will confirm the rendezvous locations as described in SI 6 at 0900 over VHF Channel 72. The failure to make this announcement or for a boat to hear this announcement will not be grounds for a boat to request redress. This changes RRS 62.1(a).
- 2.4** After the rendezvous locations and any other regatta announcements have been made, Race Committee signal vessels will monitor and communicate with their respective classes listed below:
 - a) Blue Circle VHF Channel 72
 - b) White Circle VHF Channel 71

3 SIGNALS MADE ASHORE

- 3.1** Flag signals will be flown from the western yardarm at Harbour Court.
- 3.2** When flag AP is displayed ashore, "1 minute" is replaced with "not less than 60 minutes" in race signal AP. This changes RRS Race Signals.
- 3.3** Signals designating the rendezvous locations for all circles will be displayed at 0900 each day from the flagpole at Harbour Court.

4 SCHEDULE OF EVENTS

- 4.1**

| | | |
|---------------------|--------------|-------------------------------------|
| Saturday, August 21 | 0730-0930 | Registration at NYYC Sailing Center |
| | 1100 | First Warning Signal |
| | 1800 | Regatta BBQ at NYYC Harbour Court |
| Sunday, August 22 | 1100 | First Warning Signal |
| | After Racing | Prize Giving at NYYC Harbour Court |
- 4.2** When more than one race will be held on the same day, the warning signal for each succeeding race will be made as soon as practicable.
- 4.3** For all classes on the final day of the regatta, the initial warning signal for the final race of the first class will not be made after 1500 hours. The warning signal for a start following one or more general recalls, or for subsequent classes may be made after 1500.

5 CLASS FLAGS AND CIRCLE ASSIGNMENTS

5.1 Class flags will be as follows:

- | | |
|-----------|--------------------------------|
| IC37: | White flag with class insignia |
| VX One: | Numeral Pennant Two |
| Etchells: | Numeral Pennant One |

5.2 The Melges IC37 are assigned to the Blue Circle. The VX Ones and Etchells are assigned to the White Circle.

6 RENDEZVOUS

Circle rendezvous locations are listed below and will be designated as described in SI 2.3 and SI 3.3. See SI Addendum A – NYYC Primary Race Areas.

Rhode Island Sound:

- Area “A” -in the vicinity of 160° M for 1.2 NM from R “2” QR Whistle marking Brenton Point
- Area “B” -in the vicinity of 120° M for 2.5 NM from R “2” QR Whistle marking Brenton Point
- Area “C” -in the vicinity of 275° M for 3.0 NM from R “2” QR Whistle marking Brenton Point
- Area “D” -in the vicinity of 225° M for 2.0 NM from R “2” QR Whistle marking Brenton Point
- Area “E” -in the vicinity of 165° M for 5.0 NM from R “2” QR Whistle marking Brenton Point
- Area “F” -in the vicinity of 145° M for 3.5 NM from R “2” QR Whistle marking Brenton Point

Newport Harbor and near Newport Bridge:

- Area “K” -between Goat Island and Rose Island
- Area “M” -in the vicinity of R “12” west of Rose Island
- Area “O” -in the vicinity of Potter Cove (just north of west end of Newport Bridge)

North of Newport Bridge:

- Area “R” -in the vicinity of 200° for 0.5 NM from Halfway Rock
- Area “T” -in the vicinity of G “7” QG off Quonset Point

7 CHECK-IN AND RETIREMENT

7.1 **Check-in on Land:** Each boat shall check in at the registration desk at the NYYC Sailing Center at Harbour Court during the registration times so designated in SI 4.1.

7.2 **Check-in on Water:** Prior to the warning signal for the first race each day, each boat shall check in with the Race Committee signal vessel for their circle by passing astern and announcing their sail number.

7.3 Boats retiring are requested to inform the Race Committee on their circle VHF channel or by calling the NYYC Sailing Office at (401) 845-9633.

8 THE COURSES

8.1 The diagrams in Attachment B show the courses, including the approximate angles between the legs, the order in which marks are to be passed and the side on which each mark is to be left.

8.2 No later than the warning signal, the course to be sailed will be designated by displaying a numeral pennant 4 or 5 from the race committee vessel.

8.3 No later than the warning signal, the Race Committee will display on a board the approximate compass bearing and distance of the first leg.

8.4 Mark 3s/3p is a gate. In the event one of the gate marks is missing, the single remaining mark shall be rounded to port.

8.5 Mark 1a is an offset mark adjacent to mark 1.

8.6 Blue Circle: A pink limit mark will be set 5-8 boat lengths to leeward of mark 1. This limit mark shall be left to port on both the upwind and the downwind legs. However, in Course 5, the limit mark may be passed on either side on the final upwind leg approaching the finish line. The location of the limit mark or the failure of the Race Committee to set the limit mark shall not be grounds for a boat to request redress. This changes RRS 62.1(a).

9 MARKS

Marks will be inflatable buoys as follows:

| Circle | Original | Starting | Finishing | Change | Limit |
|---------------|-----------------|-----------------|------------------|---------------|--------------|
| Blue | Orange | Green | Pink | Yellow | Pink |
| White | Orange | Green | Pink | Yellow | N/A |

10 THE START

- 10.1 The starting line will be between a staff displaying an orange flag on the starboard end signal vessel and the course side of the port-end starting mark as described in SI 9 *or* a staff displaying an orange flag on the port end signal vessel.
- 10.2 A boat starting later than five (5) minutes after the starting signal will be scored DNS. This changes RRS 63.1, A4 and A5.
- 10.3 The Race Committee will attempt to notify OCS boats by radio on their respective circle VHF channel. Failure of equipment, failure to hear a hail, delay in hailing or the order in which hails are given will not be grounds for a boat to request redress. This changes RRS 62.1(a).

11 CHANGE OF THE NEXT LEG OF THE COURSE

- 11.1 To change the next leg of the course, the Race Committee will lay a new mark (or move the finishing line to a new position) and remove the original mark as soon as practicable. When in a subsequent change a new mark is replaced, it will be replaced by an original mark.
- 11.2 The Race Committee may change the course by up to five degrees in bearing and/or 0.2 nm in length without a signal or change of mark color. This changes RRS 33.
- 11.3 White Circle Only: In the event of a windward change of course, mark 1a will not be set.

12 THE FINISH

- 12.1 The finishing line for Course 4 will be between a staff displaying a blue flag on the Race Committee signal vessel and the nearby finishing mark as described in SI 9 OR a staff displaying a blue flag on a Race Committee vessel.
- 12.2 The finishing line for Course 5 will be between a staff displaying a blue flag on the Race Committee vessel at the starboard end and the nearby finishing mark located approximately 0.1 nautical mile to windward of mark 1.

13 PENALTY SYSTEM

- 13.1 Appendix V will apply. Rule V1 is always a One-Turn Penalty.
- 13.2 A boat that has taken a penalty shall complete an online penalty acknowledgement form or a paper form available from the Sailing Office/Protest Desk and submit/file it with the Protest Desk no later than the end of protest time.
- 13.3 For breaches of the rules other than Part 2, the protest committee may impose a lesser penalty than DSQ. This changes RRS 64.2.

14 TIME LIMITS

- 14.1 The time limit for the first boat to sail the course and finish will be three hours from the starting signal.
- 14.2 If no boat has passed their first windward mark 45 minutes after the starting signal, the race shall be abandoned.
- 14.3 Boats failing to finish within 30 minutes after the first boat sails the course and finishes will be scored Did Not Finish. This changes RRS 35, A4 and A5.

15 PROTESTS AND REQUESTS FOR REDRESS

- 15.1 The intent to protest and the boat being protested shall be communicated to the Race Committee at the first reasonable opportunity after the boat intending to protest finishes until acknowledged by the Race Committee. This changes RRS 61.1(a).
- 15.2 Hearing Request forms for protests or requests for redress are available on the regatta website or at the race office in the New York Yacht Club Sailing Center. Protests and requests for redress shall be submitted online or delivered to the Protest Desk as soon as possible, but not later than one hour after the Race Committee signal vessel for that circle has docked. The time limit for filing a protest will be posted on the Official Notice Board.

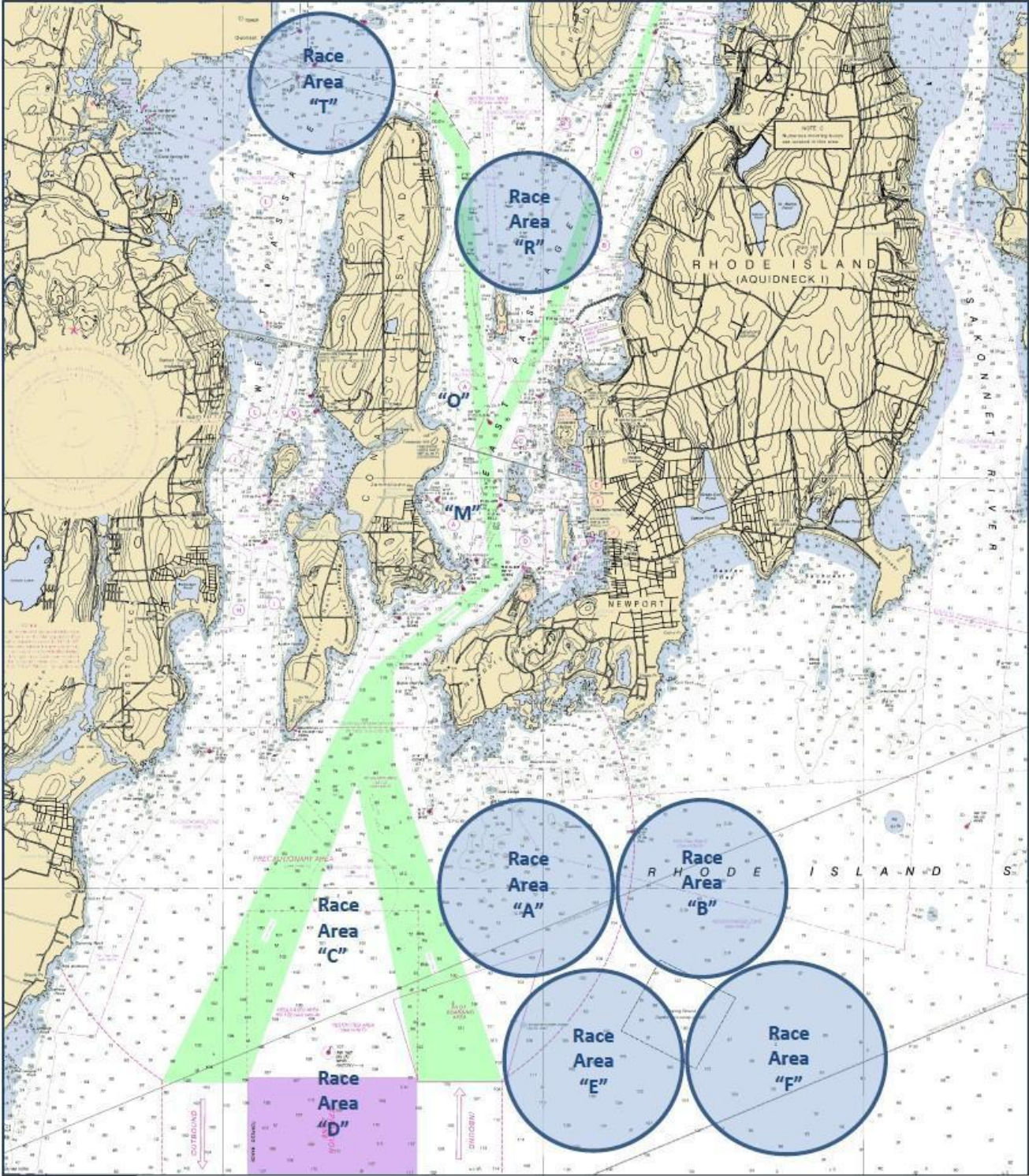
- 15.2** Notices will be posted as soon as possible on the Hearing Notice Board. Hearings will be held in the Jury Room at the New York Yacht Club Sailing Center on each day beginning as soon as possible.
- 15.3** Appendix T will apply.
- 15.4** Breaches of instructions 7.2, 13.2, 17, 18 and 20 will not be grounds for protest by a boat. This changes RRS 60.1(a).
- 16 SCORING**
- 16.1** One race is required to be completed to constitute a series.
- 16.2** When fewer than six (6) races have been completed, a boat's series score will be the total of her race scores. When six (6) or more races have been completed, a boat's series scores will be the total of her race scores excluding her worst score. This changes RRS A2.
- 17 SAFETY REGULATIONS**
- A boat that retires from a race shall notify the Race Committee and/or the protest committee as soon as possible.
- 18 REPLACEMENT OF EQUIPMENT**
- In the case of damage, boats and/or equipment may only be substituted with the written permission of the protest committee. When the damage occurs later than 90 minutes before the first scheduled start of the day and before the start of the last race of the day, provisional verbal permission shall be obtained from the jury or Race Committee. Written permission by the protest committee shall be obtained before the end of the Protest Time limit on the day in which the substitution takes place.
- 19 COACH AND SUPPORT VESSELS**
- 19.1** White Circle: Coach and other support persons must register with the Organizing Authority prior to the first day of racing.
- 19.2** White Circle: All registered coach and support vessels will carry on board and operate while on the water a VHF radio capable of transmitting and receiving on VHF Channels 16, 71 and 72 and agree to assist the Race Committee if directed to do so.
- 19.3** White Circle: Competitors shall have no communication with, and boats shall not be tied to, coach or support vessels from the first warning signal (or any other time the Organizing Authority considers appropriate) of the day until racing has been concluded for the day. Between races, coach and support vessels shall not approach, communicate with or transfer provisions or equipment to or from their supported vessels unless in a medical or emergency requirement threatening the health of the crew or the flotation of the boat and only with the expressed permission of the protest committee or the Race Committee.
- 19.4** White Circle: Registered coach and support vessels and their personnel shall stay at least 100 metres below the starting line from the time of the preparatory signal until five minutes after the start of any race. After this time, coach and support vessels may then proceed parallel to the course on the starboard side of the course facing the wind at a distance of at least 100 metres outside areas where boats are racing. Coach and support vessels shall not go above the weather marks or the Course 5 finishing line or below the leeward marks or the Course 4 finishing line at any other time while boats are racing.
- 19.5** White Circle: Any breach of SI 19.1, 19.2, 19.3 or 19.4 by a support person boat may result in the protest committee convening a hearing under rules 60.3(d) and 63.9. The protest committee may take action against a support person acting under rule 64.4(a), and acting under rule 64.4(b) may penalize any or all boats serviced by that support person.
- 19.6** White Circle: Coach and support boats shall, when requested by the Race Committee, tow or assist boats not associated with them. Coach and support boats will monitor their circle VHF channel and shall follow all instructions from the Race Committee.
- 19.7** Blue Circle: IMIC37 Class Rule H.4 applies.
- 20 SAFETY REGULATIONS**
- 20.1** **Restricted Channels:** Competitors are reminded that Narragansett Bay and its approaches are considered restricted channels for commercial traffic and other vessels restricted in their ability to maneuver. Competitors must comply with the government right-of-way rules when in proximity to commercial or privileged marine traffic.

- 20.2 Newport Security Zone:** In the event there is racing in Narragansett Bay, competitors should be aware of heightened security around the Navy base in Newport just to the north of the Newport Jamestown Bridge. The area may be defined by a series of white buoys marking the Newport Security Zone along the coast of the Naval Facilities from Coasters Harbor to the breakwater at the north end of Coddington Cove and the line defined by the buoys shall rank as an obstruction. Yachts shall not enter this area. A Navy patrol boat monitors the area and vessels navigating in the Exclusionary Zone may face action by Coast Guard and Naval authorities.
- 20.3 Additional Restricted Areas:** There may be additional restricted areas due to Navy activity, shipping or fishing operations that may be described in an amendment to the sailing instructions.
- 21 PRIZES**
- 21.1** Overall series trophies will be awarded to the top finishers in each class.
- 21.2** Other trophies will be awarded at the discretion of the Organizing Authority.
- 22 DISCLAIMER OF LIABILITY**
- 22.1** Competitors participate in the regatta entirely at their own risk. All skippers and crew should familiarize themselves with RRS 3, Decision to Race. The Organizing Authority and all its Committee members will not accept any liability for material damage or personal injury or death sustained in conjunction with or prior to, during, or after the regatta. .
- 22.2** As a condition of entry, each owner, skipper and individual participating crew member shall submit an online Waiver & Release of Liability Form / COVID-19 Release. The fully executed Liability & Media Waiver Form / COVID-19 Release shall be submitted prior to racing. The waiver form link can be found on the [event website](#).
- 22.3** Media Waiver – Competitors and crew members on the competing boats grant, at no cost, the New York Yacht Club Regatta Association, Inc., New York Yacht Club, and any official sponsors of the regatta, the absolute right and permission to use their name, voice, image, likeness, biographical material as well as representations of the boats in any media worldwide (being television, print and internet media), including video footage, for the sole purposes of advertising, promoting, reporting and disseminating information regarding the 2021 One-Design Regatta and the participants in the One-Design Regatta.



© Copyright New York Yacht Club 2021. All Rights Reserved.

New York Yacht Club; NYYC; Harbour Court, club burgee; certain other logos and marks are trademarks or registered trademarks of the New York Yacht Club in the United States and other countries. All Rights Reserved. Use is prohibited without written permission of the Secretary of the New York Yacht Club.

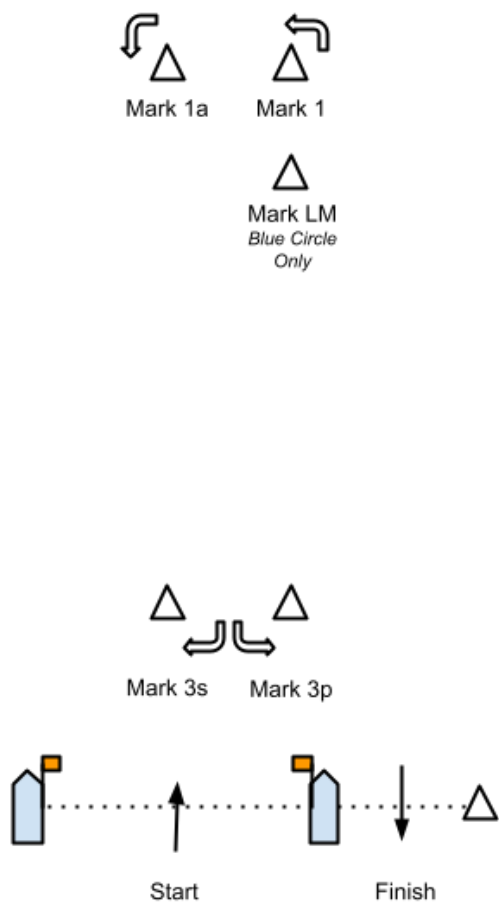
SI ATTACHMENT A – PRIMARY RACE AREAS



SI ATTACHMENT B – COURSE DIAGRAMS

| | | |
|---|----------|---|
|  | Course 4 | Start - 1p - 2p - 3s/3p - 1p - 2p - Finish (downwind) |
|  | Course 5 | Start - 1p - 2p - 3s/3p - 1p - 2p - 3s/3p - Finish (upwind) |

COURSE #4 - 4 Legs



COURSE #5 - 5 legs



NEW YORK YACHT CLUB OFFICERS

Christopher J. Culver, Commodore, NYYC
Paul M. Zabetakis, MD, Vice Commodore, NYYC
L. Jay Cross, Rear Commodore, NYYC
Benjamin E. Kinney, Chairman, NYYC Sailing Committee

EVENT CHAIR

Drew Freides, Event Chair

RACE COMMITTEE

Clare G. Harrington, Principal Race Officer and Chair, NYY Race Committee
Ellen Pesch, Race Office,
Barry Gold, Deputy Race Officer
Lynn Lynch, Deputy Race Officer
James Bailey
David Elwell
Thomas Flynn
Ingrid Flynn
Sarah Gochberg
Richard Gumpert
Katrina Hele
Joseph Larson
Johanna Moffitt
James Mullen
Pamela Murrin
Ellyn Osmond
Catherine Peacock
Mary Murphy Schlichting
Kurt Schlichting
Jim Shriner
Joel Stoesser
Patricia Sykes
Barbara Vietor
Sam Vineyard
Samuel Wakeman
Ray Wulff

PROTEST COMMITTEE

James Walsh, Protest Committee Chair
Britt Hall
Patricia Ann O'Donnell
John Osmond, MD

Judy McClennan, Jury Secretary
Stephanie McClennan, Jury Secretary