



2022 Nantucket J/70 Summer Open
June 17-19, 2022
Nantucket, MA
Organizing Authority: [Great Harbor Yacht Club](#)
Sailing Instructions (SI)

The notation '[NP]' in a rule of the sailing instructions (SIs) means that a boat may not protest another boat for breaking that rule. The notation [DP] in a rule means that the penalty for a breach of the rule may, at the discretion of the protest committee, be less than disqualification. This changes RRS 60.1(a).

Current versions of the J/70 Class Rules and Regulations referenced below can be found at <https://j70ica.org/rules>

1 RULES

- 1.1** The event is governed by the rules as defined in *The Racing Rules of Sailing*.
- 1.2** [DP] The International J/70 Class Association Class Rules (CR) including Part III, Sections I.3 (Outside Help), I.4 (Corinthian Division), and I.5 (One-Pro Division) will apply.
- 1.3** The protest committee may impose penalties less than disqualification (DPI), for violation of the class rules and racing rules other than those of RRS Part 1 and Part 2. This changes RRS 64.2.

2 CHANGES TO SAILING INSTRUCTIONS

- 2.1** Any change to the sailing instructions will be posted [on the official notice board](#) before 0900 on the day it will take effect, except that any change to the schedule of races will be posted by 2000 on the day before it will take effect.

3 COMMUNICATIONS WITH COMPETITORS

- 3.1** The official notice board is electronic and located at <https://yachtscoring.com/emenu.cfm?eid=14614>.
- 3.2** The race office is located at the Jobson Sailing Center at the Great Harbor Yacht Club. They can be reached by calling (508) 680-5006 or emailing econway@ghyc.com.
- 3.3** On the water, the race committee intends to monitor and communicate with competitors via VHF radio on channel 71.
- 3.4** [NP] While racing, except in an emergency, a boat shall not make voice or data transmissions and shall not receive voice or data communication that is not available to all boats.

4 CODE OF CONDUCT

- 4.1** [DP] Competitors and support persons shall comply with reasonable requests from race officials.

5 SIGNALS MADE ASHORE

- 5.1** Signals made ashore will be displayed on the flagpole at Great Harbor Yacht Club.
- 5.2** When flag AP is displayed ashore, '1 minute' is replaced with 'not less than 60 minutes' in Race Signals AP.

6 SCHEDULE OF RACES

- 6.1** The racing schedule will be:

Date	Time	Action
Wednesday, June 15	1600	North Sails Zoom Weather Briefing. Click here to register.

Thursday, June 16	1000-1200	Check-In
	1300	Practice racing. Details will be posted on the notice board.
Friday, June 17	0800	Last minute check-in available if necessary. Please reach out to OA if you require check in on Friday.
	0830	Competitor's Meeting
	1100	First Warning Signal
Saturday, June 18	1100	First Warning Signal
Sunday, June 19	1100	First Warning Signal
	1400	No warning signal shall be made after this time

6.2 Nine (9) races are scheduled with 3 races per day. If, in the opinion of the race committee, the regatta is behind schedule or likely to fall behind schedule, up to 4 races may be raced on one day.

6.3 Daily Awards will be presented directly following racing each day at the social events on the Great Harbor Yacht Club lawn. Overall awards will be presented at the closing social event on Sunday, June 19 directly following racing.

6.4 Social Events will begin daily immediately following racing at approximately 1630. Weekend Regatta Social Package tickets [may be purchased here](#) for visiting family and friends. Regatta Charging Privileges are also available for teams looking to charge any food or drinks over the weekend. [Full details and form can be found here.](#)

7 CLASS FLAGS

7.1 The Class flag will be a white flag with the J/70 logo.

8 RACING AREA

8.1 The racing area will be in Nantucket Sound as shown in SI Addendum 1.

8.2 No later than 0900, the race committee will post the intended racing area on the notice board.

8.3 Approximately 45 minutes prior to the first scheduled warning signal, the race committee will announce the location of the starting area on VHF radio, either Racing Area A or Racing Area B. If the race committee subsequently changes location, it will announce the change on VHF radio.

9 COURSES

9.1 The course will be windward-leeward with four legs, finishing downwind. The weather mark, including after a change in course, will have an offset mark. The weather mark and offset mark will be rounded to port. The leeward mark will be a gate.

9.2 Prior to the warning signal, the race committee signal vessel will announce on VHF radio and post on a course board the approximate length of the first leg, and the approximate compass bearing of the first leg of the course.

10 MARKS

10.1 The original weather mark and the leeward gate marks will be orange MarkSetBots.

10.2 The weather mark will have an associated offset mark which will be a yellow MarkSetBot.

10.3 A new weather mark will be a green tetrahedron and will have an associated offset mark which will be a small orange ball.

10.4 The starting and finishing marks will be an orange MarkSetBot or an orange tetrahedron and RC vessels.

- 10.5** If a leeward mark is missing or out of place, boats shall round the remaining mark to port.
- 10.6** All marks are intended to be orange or yellow MarkSetBots. Should the MarkSetBot mark be unavailable, the Race Committee will substitute with an orange or yellow tetrahedron drop marks. This changes rule RRS 34a.

11 THE START

- 11.1** The starting line will be between a staff displaying an orange flag on the race committee signal vessel at the starboard end and either (a) the course side of the starting mark or (b) a staff displaying an orange flag on a vessel at the port end.
- 11.2** If any part of a boat's hull is on the course side of the starting line at her starting signal and she is identified, the race committee will attempt to hail her sail number. Failure to hail her number, failure of her to hear such a hail, or the order in which boats are hailed will not be grounds for a redress for request. This changes RRS 62.1(a).
- 11.3** A boat that does not start within ten (10) minutes after her starting signal will be scored Did Not Start without a hearing. This changes RRS A5.1 and A5.2.

12 CHANGE OF THE NEXT LEG OF THE COURSE

- 12.1** The race committee may, without signal, make minor adjustments to change the direction of a leg, adjust the length of leg, or adjust the angle or width of the leeward gate, provided that no boat is sailing to the mark.
- 12.2** The race committee may, when signaled in accordance with RRS 33, lay a new mark (or move the finishing line) and remove the original mark as soon as practicable. When in a subsequent change a new mark is replaced, it will be replaced by an original mark.

13 THE FINISH

- 13.1** The finishing line will be between a staff displaying a blue flag on a race committee vessel and the course side of the finishing mark.

14 PENALTY SYSTEM

14.1 RRS Appendix V1 PENALTY AT THE TIME OF AN INCIDENT

The first two sentences of rule 44.1 are changed to: 'A boat may take a One-Turn Penalty when she may have broken one or more rules of Part 2 or rule 31 in an incident while racing. However, when she may have broken one or more rules of Part 2 while in the zone around a mark other than a starting mark, her penalty shall be a Two Turns Penalty.'

14.2 RRS Appendix V2 POST-RACE PENALTIES

- (a) Provided that rule 44.1(b) does not apply, a boat that may have broken one or more rules of Part 2 or rule 31 in an incident may take a Post-Race Penalty at any time after the race until the beginning of a protest hearing involving the incident.
- (b) A Post-Race Penalty is a 30% Scoring Penalty calculated as stated in rule 44.3(c). However, rule 44.1(a) applies.
- (c) A boat takes a Post-Race Penalty by delivering to the race office a written statement that she accepts the penalty and that identifies the race number and where and when the incident occurred.

- 14.3** In accordance with RRS V2 boat may e-mail a written notice to econway@ghyc.com.

15 TIME LIMITS AND TARGET TIMES

- 15.1** The target time for a race will be 50 minutes. Failure to meet the Target Time will not be grounds for redress. This changes RRS 62.1(a)

15.2 The Finishing Window for boats to finish after the first boat sails the course and finishes is 30 minutes. Boats failing to finish within the Finishing Window, and not subsequently retiring, penalized or given redress, will be scored Time Limit Expired (TLE) without a hearing. A boat scored TLE shall be scored points for the finishing place two more than the points scored by the last boat that finished within the Finishing Window. This changes RRS 35, A5.1, A5.2 and A10. At the end of the Finishing Window, the race committee will lower the finish line flags with one sound.

16 HEARING REQUESTS

16.1 The protest time limit is 60 minutes after the Race Committee vessel docks. The time will be posted on the official notice board.

16.2 Hearing request forms and requests for redress are available from the front porch of the Jobson Sailing Center at Great Harbor Yacht Club.

16.3 Hearing requests shall be delivered to the race office by the protest time limit.

16.4 Notices will be posted no later than 30 minutes after the protest time limit to inform competitors of hearings in which they are parties or named as witnesses, and the schedule for these hearings. Hearings will be held in the protest room, located in the Jobson Sailing Center, as promptly as possible after the notice is posted.

17 SCORING

17.1 One race is required to be completed to constitute a series.

17.2 (a) When fewer than *four (4)* races have been completed, a boat's series score will be the total of her race scores.

(b) When more than *five (5)* races have been completed, a boat's series score will be the total of her race scores excluding her worst score.

18 [DP] SAFETY REGULATIONS

18.1 Prior to the warning of her first race of each day, each boat shall check-in with, and be recognized by, the race committee vessel.

18.2 A boat that retires from a race shall notify the race committee at the first reasonable opportunity.

18.3 A boat that does not intend to race on any of the day or withdraws for any reason shall notify the race committee or race office (see SI 3) at the first reasonable opportunity.

19 EQUIPMENT AND MEASUREMENT CHECKS

19.1 Pursuant to J70ER 4, a boat, sails or equipment may be inspected at any time for compliance with the class rules. On the water any boat may be instructed by the race committee or technical committee to proceed immediately to a designated area for inspection.

20 OFFICIAL VESSELS

20.1 Official vessels will be identified with a white flag with the event logo.

21 [DP] SUPPORT TEAMS

21.1 Class Rule I.3 (Outside Help) applies.

21.2 Team leaders, coaches and other support persons shall stay outside areas where boats are racing from the time of the preparatory signal for the first start until all boats have finished or retired or the race committee signals a postponement, general recall or abandonment.

22 BERTHING

22.1 [DP] Boats and trailers may be stored at GHYC prior to the event beginning June 1, 2022 and after the event until June 24, 2022. After June 24, 2022 special arrangements need to be made with the OA.

22.2 There will be no overnight, in-water storage for boats at GHYC docks but boats may dock for repairs, equipment loading, etc by making arrangements with the GHYC Dockmaster on VHF 69 or (508) 838-3102.

23 HAUL-OUT RESTRICTIONS

23.1 [DP] All boats shall be afloat before 1800 on June 16, 2022.

23.2 [DP] Boats shall not be hauled out during the regatta except with and according to the terms of prior written permission of the race committee.

24 PRIZES

24.1 Daily and overall prizes will be awarded to the top three boats. Prizes will also be awarded to the top boat in the Corinthian and One-Pro Division.

24.2 Additional trophies may be awarded at the discretion of the OA.

25 RISK STATEMENT

25.1 See NOR 18.

26 INSURANCE

26.1 [NP] Each participating boat shall be insured with valid third-party liability insurance with a minimum coverage of US \$300,000 per event or the equivalent. A copy of insurance company documents establishing such coverage, current through the end of the regatta, shall be supplied as part of completing registration and check in.

27 RACE OFFICIALS

27.1 Race Committee PRO: Hank Stuart (IRO)

Chief Judge: Sandy Grosvenor (IJ)

28 FURTHER INFORMATION

28.1 This is a Clean Regatta; all competitors are strongly encouraged to use multi-use water bottles instead of disposable water bottles, and to recycle whenever possible. A competitor shall not intentionally put trash in the water.



Nantucket is designated a "No Discharge Zone" by the EPA. Great Harbor Yacht Club and the Great Harbor Yacht Club Foundation are committed to protecting and improving the health of our unique harbor.

28.2 For further information please contact:

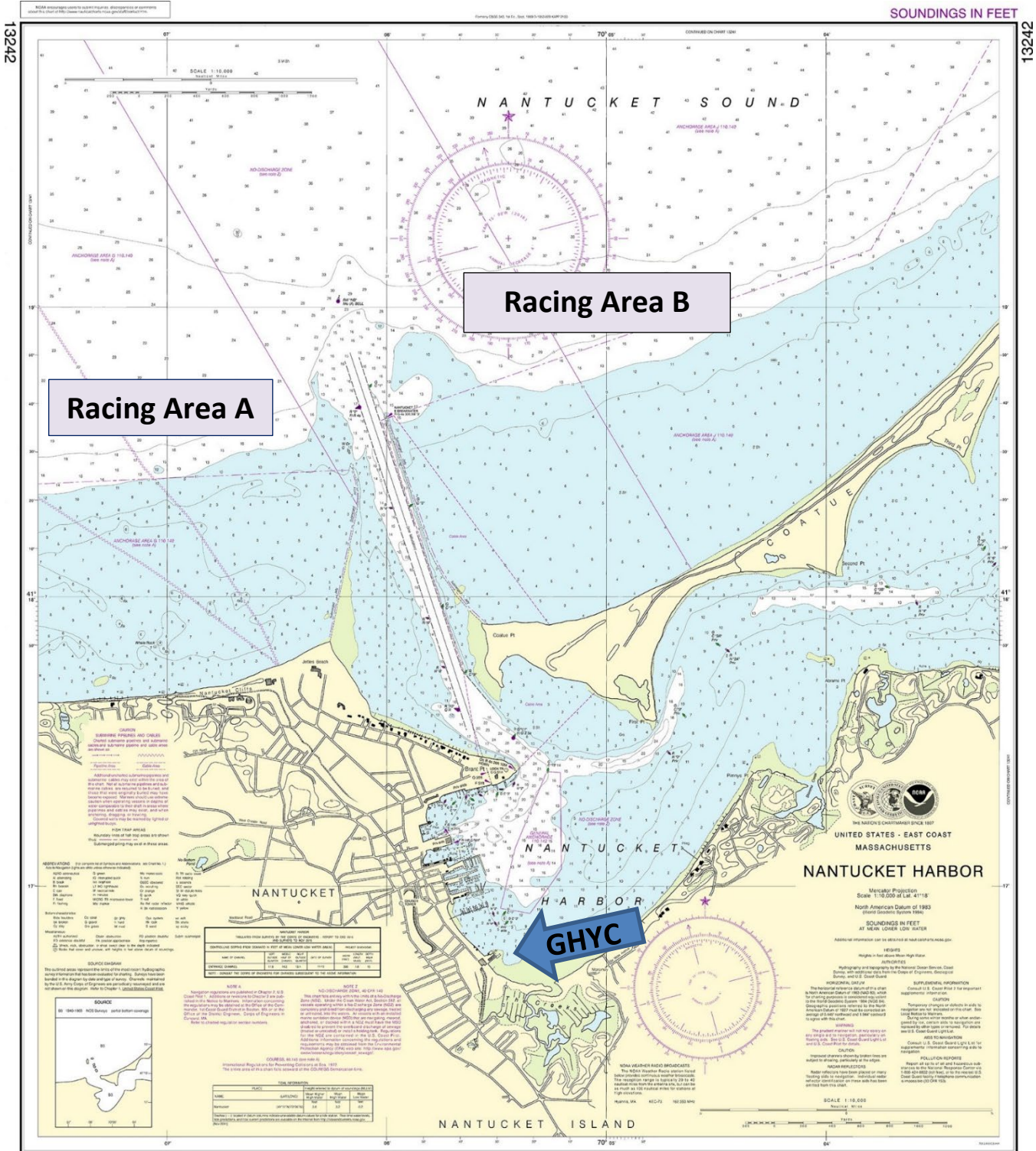
GHYC Waterfront Director: Emma Conway, econway@ghyc.com

Event Chair: Susan Wayne, susanbdfarm@gmail.com



CISCO BREWERS
EST. NANTUCKET

SI Addendum #1



13242

SOUNDINGS IN FEET

Published at Washington, D.C.
U.S. DEPARTMENT OF COMMERCE
NATIONAL OCEANIC AND ATMOSPHERIC ADMINISTRATION
NATIONAL COAST SERVICE
COAST SURVEY

Nantucket Harbor
SOUNDINGS IN FEET - SCALE 1:10,000

13242

Last Correction: 8/22/2016 Cleared Through:
LNM: 3816 (9/20/2016), NMA: 3916 (9/24/2016), CHS: 0816 (8/26/2016)