



**The Ted Hood Regatta**  
**HOST: Eastern Yacht Club**  
**August 20 - 22, 2021**  
**Marblehead, MA**

Organizing Authority(OA): Storm Trysail Club

The host club is the Eastern Yacht Club (“EYC”, official host); in association with the Boston Yacht Club and the Corinthian Yacht Club

**SAILING INSTRUCTIONS (SI's)**

Preamble:

The notation [NP] in a rule of the sailing instructions (SIs) means that a boat may not protest another boat for breaking that rule. This changes RRS 60.1(a).

**I. RULES**

- 1.1 The event is governed by the rules as defined in the Racing Rules of Sailing (RRS).
- 1.2 [NP] [DP] Federal, state and local rules regarding COVID-19 guidance, available at [www.Marblehead.org/harbormaster](http://www.Marblehead.org/harbormaster) will apply.

**2. CHANGES TO THE SAILING INSTRUCTIONS**

- 2.1 Any change to the sailing instructions will be posted before 0900 on the day it will take effect, except that any change to the schedule of races will be posted by 1800 on the day before it will take effect.

**3. COMMUNICATIONS WITH COMPETITORS**

- 3.1 Notices to competitors will be posted on the official notice board located at [www.Yachtscoring.com](http://www.Yachtscoring.com) As a courtesy only, notices may be posted on the glass wall of the Race Office located in the Eastern Yacht Club Sailing Center, the Race Committee bulletin board at the Boston Yacht Club located in the PC Don Humphries Yard Arm Building, and the notice board located near the trophy room at the Corinthian Yacht Club.
- 3.2 On the water, the race committee may make courtesy broadcasts to competitors on the VHF channel designated.



3.3 [DP] While racing, except in an emergency, a boat shall not make voice or data transmissions and shall not receive voice or data communication that is not available to all boats.

4. CODE OF CONDUCT

4.1 [DP] Competitors and support persons shall comply with reasonable requests from race officials.

5. SIGNALS MADE ASHORE

5.1 Signals made ashore will be displayed at the yardarm of the Casey Flagpole at the Eastern Yacht Club.

5.2 When flag AP is displayed ashore, '1 minute' is replaced with 'not less than 60 minutes' in Race Signals AP.

6. SCHEDULE OF RACES

6.1

Friday, August 20, 2021	1200	First warning Signal for all classes, except the J/70 Class. Additional races to follow
	1630	First Warning Signal for Double-Handed and Fully-Crewed Ocean Race Classes
Saturday, August 21, 2021	1200	First Warning Signal for all Lines. Additional races to follow
Sunday, August 22, 2021	1200	First Warning Signal for all classes. Additional races to follow
	1500	No Warning Signal after this time

7. CLASS FLAGS

7.1 For the One-Design Line, the class insignia will be the class flag.

7.2 For non-one design classes the corresponding numeral pennant and class splits will be posted in Addendum C.

8. RACING AREA



8.1 Racing areas are shown in Addendum A.

## 9. COURSES

9.1 The diagrams in Addendum B show the courses, including the approximate angles between legs, the order in which marks are to be passed, and the side on which each mark is to be left.

9.2 No later than the warning signal, the race committee signal vessel will display the approximate compass bearing to the first mark.

9.3 If a gate mark is missing, the remaining mark is to be rounded to port.

9.4 A green flag displayed no later than the warning signal means 'Mark 1 for the class about to start will be a green tetrahedron'.

## 10. MARKS

10.1 Start and finish marks will be green tetrahedrons.

10.2 Original rounding marks for the One Design Line will be yellow tetrahedrons; for the ORReZ and PHRF Line they will be orange tetrahedrons.

10.3 New marks will be pink tetrahedrons. A subsequent change will revert to the original mark description.

## 11. THE START

11.1 Races will be started using RRS 26.

11.2 The starting line is between a staff displaying an orange flag on the signal vessel at the starboard end and the course side of the port-end starting mark.

11.3 [DP] Boats whose warning signal has not been made shall avoid the starting area during the starting sequence for other racers.

11.4 If any part of a boat's hull is on the course side of the starting line at her starting signal and she is identified, as a courtesy the race committee will attempt to hail her sail number on the designated VHF channel. Failure to hail her number, the timeliness of the hail, failure of her to hear such a hail, or the order in which boats are hailed will not be grounds for a request for redress. This changes RRS 62.1(a).

## 12. CHANGE OF THE NEXT LEG OF THE COURSE

12.1 To change the next leg of the course, the race committee will lay a new mark (or move the finishing line) and remove the original mark as soon as practicable. When in a subsequent change a new mark is replaced, it will be replaced by an original mark.



### 13. THE FINISH

13.1 The finishing line is between a staff displaying a blue flag on the finishing mark at the starboard end and the course side of the port end finishing mark.

### 14. TIME LIMITS AND FINISHING WINDOW

14.1 The time limit for the first in each class to finish is 90 minutes.

14.2 The Finishing Window is the time for boats to finish after the first boat sails the course and finishes. Boats failing to finish within the Finishing Window, and not subsequently retiring, being penalized or given redress, will be scored TLE without a hearing. The boat will be scored points for the finishing place one more than the points scored by the last boat that finishes within the Finishing Window.

14.3 The Finishing Window will be 30 minutes.

### 15. HEARING REQUESTS

15.1 For each line, the protest time limit is 60 minutes after the signal vessel for that line docked. The time limit will be posted on the official notice board at

<https://yachtscoring.com/emenu.cfm?eID=14607>

15.2 Hearing request forms are available at yachtscoring link in 15.1 and at the protest desk located in the Sailing Center, near the Race Committee Office.

15.3 Notices will be posted no later than 30 minutes after the protest time limit to inform competitors of hearings in which they are parties or named as witnesses. Hearing will be held at the Eastern Yacht Club Model Room, beginning at the time posted.

### 16. SAFETY REGULATIONS

16.1 [NP] A boat shall check in before her first race of each day by hailing the race committee signal vessel with her sail number and the number of souls on board, A boat failing to check in will receive a 20% scoring penalty as calculated in RRS 44.3 for each race in which a breach occurs, without a hearing. This changes RRS 63.1 and A5.

16.2 [DP] A boat that retires from a race shall notify the race committee at the first reasonable opportunity by VHF radio or hail. If this is not practicable before leaving the racing area, the boat shall call the Eastern Yacht Club (781-631-1400) after berthing.

16.3 Boats requiring assistance shall contact the signal vessel, giving her sail number, fleet, location and the nature of the emergency, including the nature of any injuries.

### 17. OFFICIAL VESSELS

17.1 The signal vessel will display a blue race committee flag.

17.2 Other race committee vessels will display a yellow race committee flag.



17.3 The judge vessel will display a 'JUDGE' flag.

### **ADDENDUM A**

#### **Distance and Bearing to racing Areas**

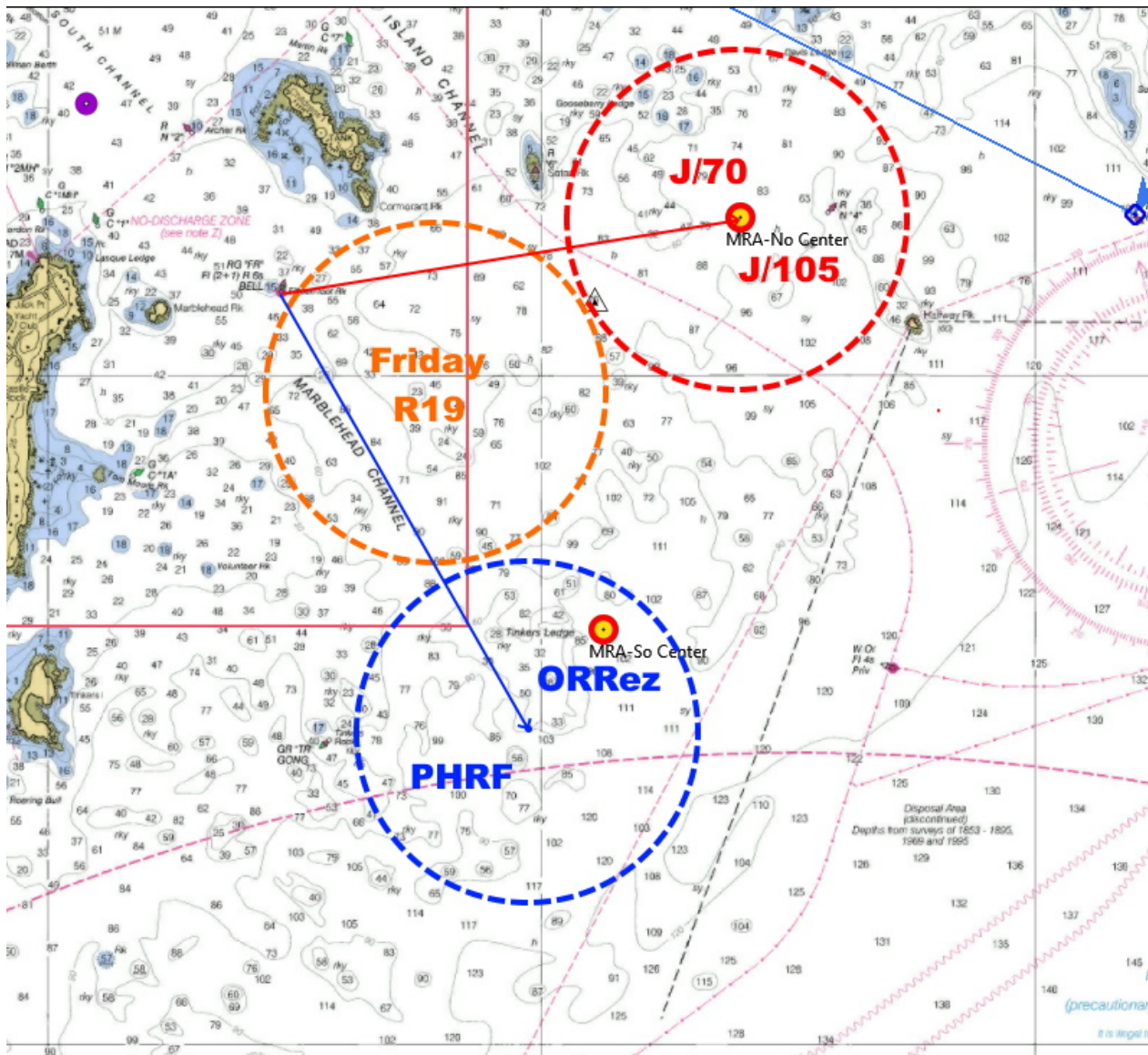
Below are the approximate distances and compass bearing to each race line.

Center of Red Line: One Design - J/70 and J/105

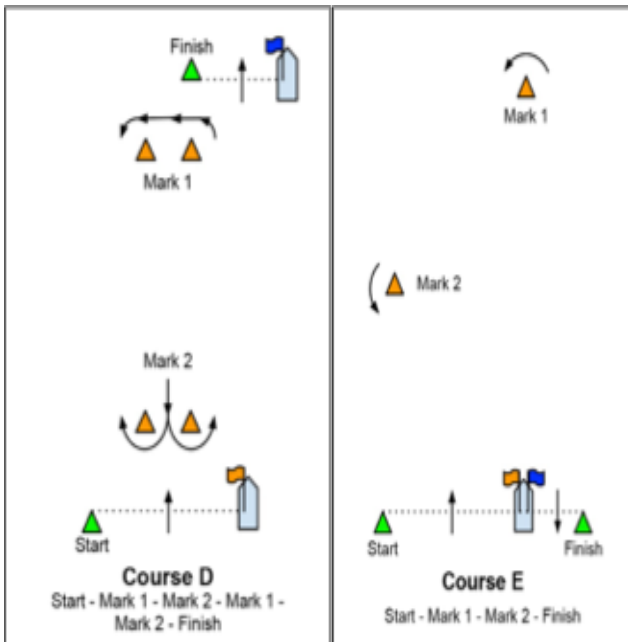
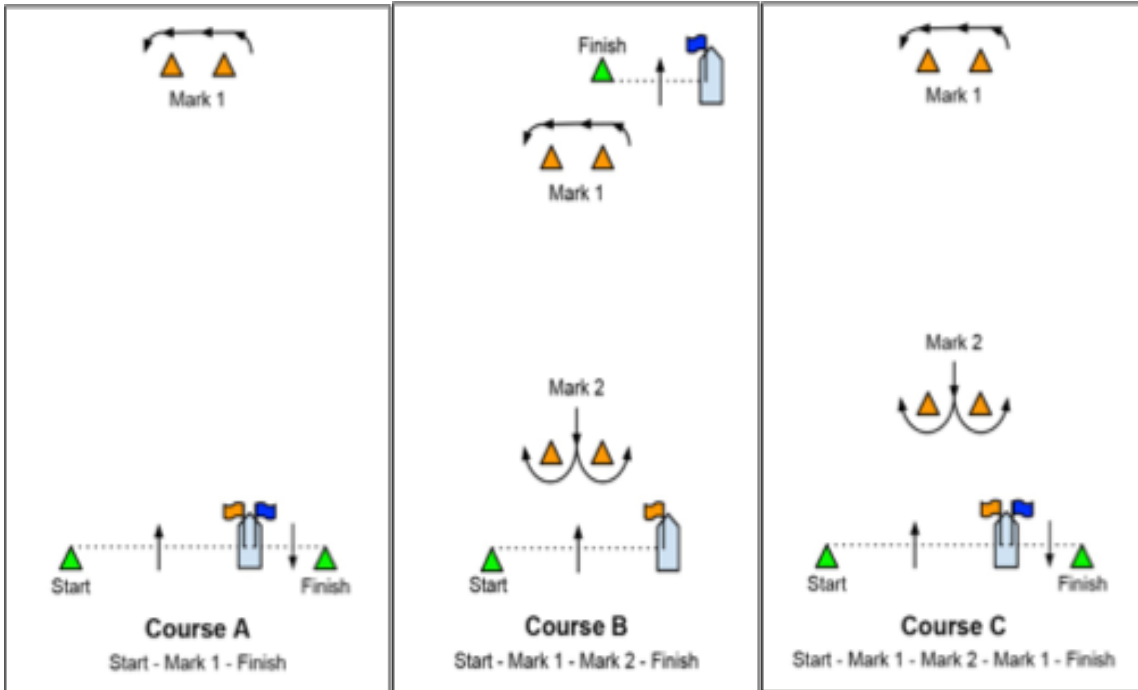
1.4 nm at a compass bearing of 95-deg magnetic from Marblehead Bell RGRFL (2+1)  
R 6S BELL

Center of Blue Line: Handicap – ORRez and PHRF

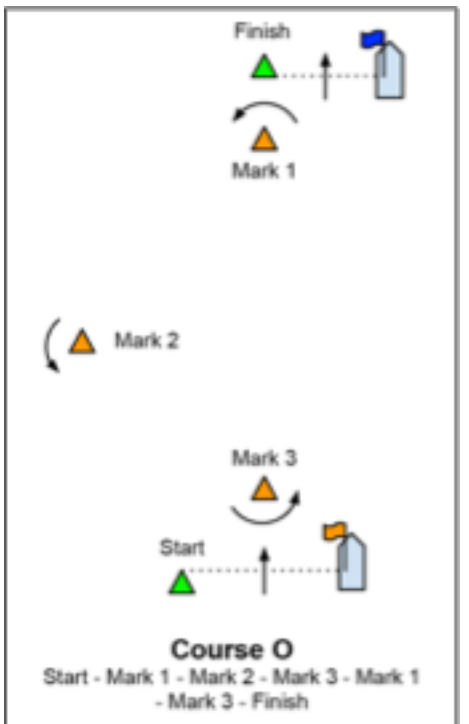
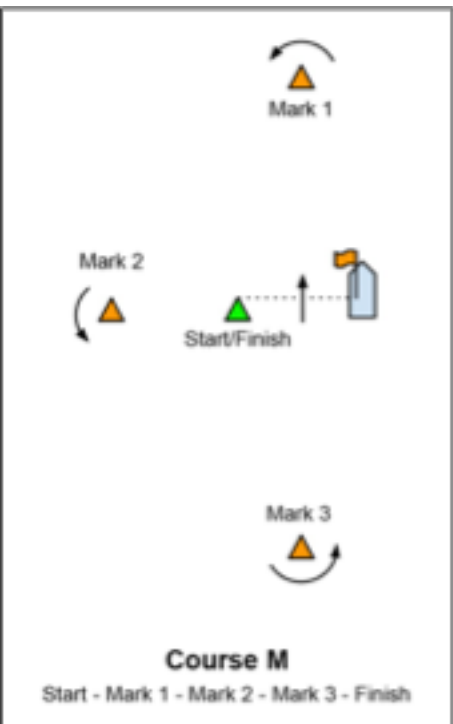
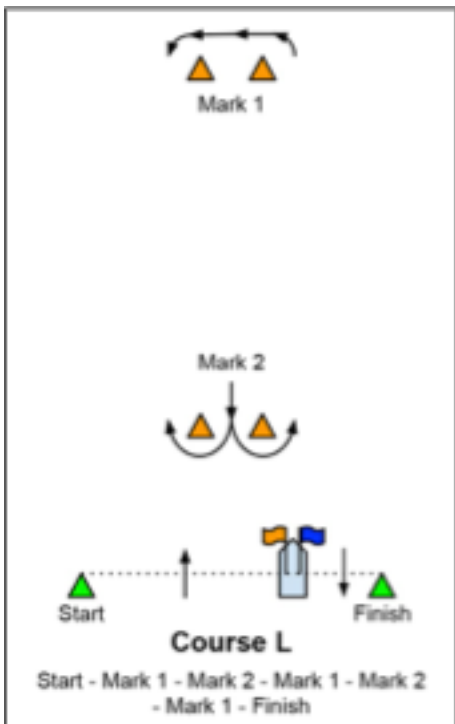
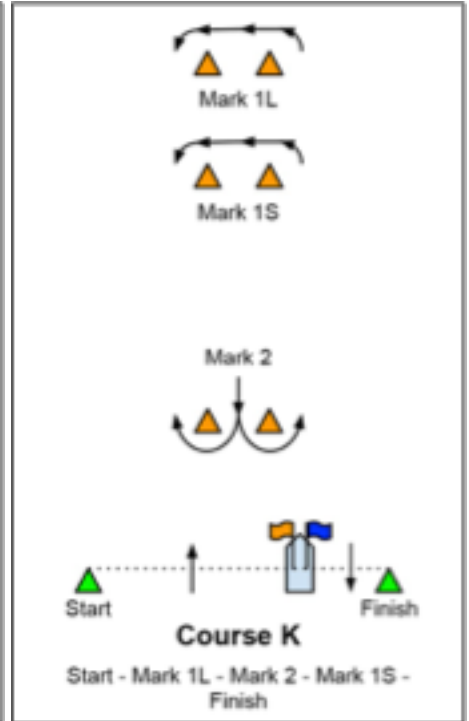
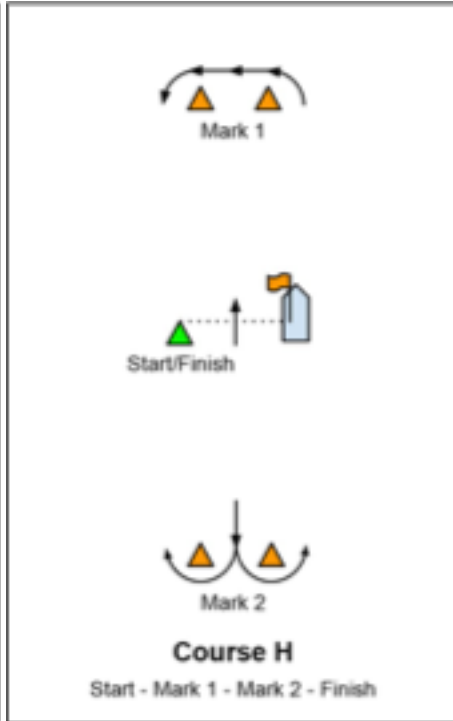
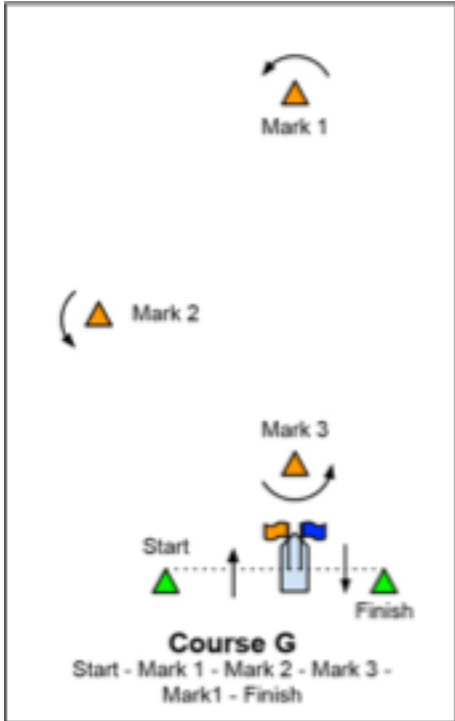
1.5 nm at a compass bearing of 165-deg magnetic from Marblehead Bell RGRFL (2+1)  
R 6S BELL



# ADDENDUM B-COURSES



**ADDENDUM B, CONT.**







## ADDENDUM C

### Handicap Racing Class Flags

Division	Class	Class Flag
ORRez	Class 1	Numeral Pennant 1
ORRez	Class 2	Numeral Pennant 2
PHRF_ToT	PHRF – Spinnaker	Numeral Pennant 3

Class Splits are contained in the Scratch sheet which can be found on [www.yachtscoring.com](http://www.yachtscoring.com)



**The Ted Hood Regatta**  
**HOST: Eastern Yacht Club**  
**August 20 - 22, 2021**  
**Marblehead, MA**

Organizing Authority (OA): Storm Trysail Club  
The host club is the Eastern Yacht Club (“EYC”, official host); in association with  
the Boston Yacht Club and the Corinthian Yacht Club

**Doublehanded and Fully Crewed Distance Race**  
**Friday, August 20-21, 2021**

**SAILING INSTRUCTIONS (SI's)**

**Preamble**

The notation ‘[NP]’ in a rule of the sailing instructions (SI's) means that a boat may not protest another boat for breaking that rule. This changes RRS 60.1(a).

**1. Rules**

1.1 The regatta will be governed by the rules as defined in The Racing Rules of Sailing (RRS) and the current PHRF New England (PHRF-NE), and ORRez rules.

1.2 For the ORRez divisions, the wind range will be announced on VHF Channel 71 prior to the Warning Signal for the race. RC choice of wind range will not be grounds for redress. This changes RRS 62.1.

1.3 The running of the engine in neutral is permitted for the purpose of charging the batteries only. This should be logged, and that log should be provided to the



OA upon request. The use of the engine shall never materially improve the boat's position.

1.4 [NP][DP] Federal, state, and local rules regarding COVID-19 guidance, available at [www.Marblehead.org/harbormaster](http://www.Marblehead.org/harbormaster) will apply.

## **2. Crew Requirements**

2.1 For Doublehanded vessels the crew is limited to 2 persons, each of which shall be at least 18 years of age. A parent/child team may only be permitted with prior written permission from the OA.

## **3. Notices to Competitors**

3.1 Notices to competitors will be posted on the official notice board at [www.yachtscoring.com](http://www.yachtscoring.com)

## **4. Changes to Sailing Instructions**

4.1 Any change to the sailing instructions will be posted on the official notice board at [www.yachtscoring.com](http://www.yachtscoring.com) .

4.2 Any change will be posted before 0800 on the day it will take effect, except that any change to the schedule of the race will be posted by 2000 on the day before it will take effect.

## **5. Signals Made Ashore**

5.1 Signals made ashore will be displayed from the flagstaff of the Eastern Yacht Club. As a courtesy only, signals may also be displayed on the flagstaffs of the Corinthian Yacht Club and the Boston Yacht Club.



5.2 When flag AP is displayed ashore, '1 minute' is replaced with 'not less than 60 minutes'. This changes Race Signals AP.

5.3 In case of postponement, radio announcements will be made at 1530 on VHF channel 71, and updates about the status of the postponement will be made at 30-minute intervals thereafter. These announcements may be emailed to registered boats as well as being posted on the web site [www.yachtscoring.com](http://www.yachtscoring.com).

## **6. Schedule of Races**

6.1 One race is scheduled.

6.2 The first warning signal is scheduled for 1630 on Friday, August 20, 2021.

## **7. Class Flags**

7.1 A boat racing shall display, from her backstay, the code flag for her class. A boat without a backstay shall fly the class flag from their starboard standing rigging.

7.2 Double Handed ORRez - Numeral Pennant 1  
Fully Crewed PHRF - Numeral Pennant 2

## **8. Racing Areas**

8.1 The racing area will be Massachusetts Bay.

## **9. The Courses**



9.1. Attachment A describes the courses that will be used.

9.2. The course designation will be displayed on the Signal Boat and may be announced on VHF Channel 71 as a courtesy.

9.3 An "R" prior to the course letter indicates it is the reverse course.

## **10. Marks**

10.1 The marks are described in Attachment A: Courses.

## **11. The Start**

11.1 A boat shall check-in before her warning signal and shall advise the race committee of the total number of people on board. Check in by radio is not allowed.

11.2 The starting line will be between the orange flag on the signal boat and the Marblehead Channel Bell (15- FT Rock) RG "FR" Fl (2+ 1) R 6s.

11.3 The Warning Signal for each class will be the numeral pennant for that class. Note all classes will start together.

11.4 The Audible Signal System will be used. A five minute start sequence will be used based upon the timing of RRS 26.

11.5 The failure to hail, the order of hail, the hail of some but not all, the failure of a boat to hear such hail or the untimely hail of OCS boats will not be grounds for redress. This changes RRS 62.1(a)



## **12. The Finish**

12.1 Boats shall take their GPS finish time (HH:MM:SS) by passing as close as practical to the Marblehead Channel Bell (15-FT Rock) RG "FR" F1 (2+1) R 6s, leaving it to port.

12.2 Boats shall submit their finish time in writing via email to [info@tedhoodregatta.com](mailto:info@tedhoodregatta.com) by 1800 on Saturday August 21.

## **13. Time Limits**

13.1 The first boat must finish by 1200 on Saturday. Boats that have not finished by 1800 on Saturday will be scored DNF. If the first boat does not finish by 1200 on Saturday the Race Committee shall abandon the race.

## **14. Penalty System**

14.1 Appendix V1

14.2 Appendix V2 is modified to read “The penalty shall be a 30% scoring penalty or three places, whichever is greater”.

## **15. Protests and Requests for Redress**

15.1 A HEARING REQUEST form for protests, redress and reopening can be obtained at [www.easternyc.org/protest-form](http://www.easternyc.org/protest-form) . Either print and hand deliver to EYC Sailing Center or submit electronically to [protest@easternyc.org](mailto:protest@easternyc.org) . If a diagram is included, submit a photo or scan in the email. The hearing will be held in person or by Zoom at a mutually agreed upon time.



15.2 Protest time limit shall end at 1800 on Saturday, August 21.

15.3 Notices to competitors will be posted on the official notice board located at [www.yachtscoring.com](http://www.yachtscoring.com).

15.4 Notices will be posted no later than 30 minutes after the protest time limit to inform competitors of hearings in which they are parties or named as witnesses.

## **16. Scoring**

16.1 Boats racing ORRez will use Time on Time (TOT) and PHRF will use Time on Time. (TOT).

## **17. Safety Regulations**

17.1 All boats shall have a working VHF radio. All classes will use channel 72.

17.2 In the event of an emergency, or if a boat withdraws, the boat shall notify the race committee at the first reasonable opportunity.

## **18. Event Advertising**

18.1 A boat and her crew shall comply with World Sailing Regulation 20, Advertising Code.

## **19. Radio Communication**



19.1 Except in an emergency, while racing a boat shall neither make nor receive radio communications not available to all boats. This restriction also applies to all electronic devices.

## **20. Prizes**

20.1 Prizes may be given at the discretion of the organizing authority.

## **21. Disclaimer of Liability**

21.1 Competitors participate in the regatta entirely at their own risk. See RRS rule 3 - Decision to Race. The organizing authority and the supporting yacht clubs will not accept any liability for material damage or personal injury, or death sustained in conjunction with or prior to, during, or after the regatta.

## **22. Media and Television**

22.1 Competitors give absolute right and permission for any photograph and video footage taken of themselves or the yacht they are sailing during the event, to be published in any media whatsoever, for either editorial or advertising purposes, or to be used in press information.

# **Attachment A: COURSES**

### **COURSE A – 64nm**

From the Start to R “6” Fl R 4s BELL (Farnham Rock) leaving it to Port. Thence to R “2” Fl R 4s WHIS (off Gloucester), leaving it to Port. Thence to G “1” Fl G 4s WHIS (Newcomb Ledge) leaving it to Starboard. Thence to the finish.

### **Reverse A – 64nm**





From the Start to G “1” Fl G 4s WHIS (Newcomb Ledge) leaving it to Port. Thence to R “2” Fl R 4s WHIS (off Gloucester), leaving it to Starboard. Thence to R “6” Fl R 4s BELL (Farnham Rock) leaving it to Starboard. Thence to the finish.

### **COURSE B – 90nm**

From the Start to R “6” Fl R 4s BELL (Farnham Rock) leaving it to Port. Thence to G “1” Fl G 4s BELL (off Wood End), leaving it to Port. Thence to R “2” Fl R 4s BELL (Three and One-Half Fathoms Ledge) leaving it to Starboard. Thence to the finish.

### **Reverse B – 90nm**

From the Start to R “2” Fl R 4s BELL (Three and One-Half Fathoms Ledge) leaving it to Port. Thence to G “1” Fl G 4s BELL (off Wood End), leaving it to Starboard. Thence to R “6” Fl R 4s BELL (Farnham Rock) leaving it to Starboard. Thence to the finish.

### **COURSE C – 127nm**

From the Start to G “1” Fl G 4s BELL (off Wood End), leaving it to Port. Thence to Fl(5) Y 20s Priv (Jeffreys Ledge N 42 48.112 W 070 10.126) leaving it to Port. Thence to G “1” Fl G 4s WHIS (Newcomb Ledge) leaving it to Starboard. Thence to the finish.

### **Reverse C – 127nm**

From the Start to G “1” Fl G 4s WHIS (Newcomb Ledge) leaving it to Port. Thence to Fl(5) Y 20s Priv (Jeffreys Ledge N 42 48.112 W 070 10.126) leaving it to Starboard. Thence to G “1” Fl G 4s BELL (off Wood End), leaving it to Starboard. Thence to the finish