



# Columbia Cup Regatta Sailing Instructions

August 7-8, 2021

Organizing Authority (OA) - Columbia Yacht Club (COLYC)  
Chicago, IL, USA

## SAILING INSTRUCTIONS - Distance Event - Distance Courses Amendment 3 Posted August 5, 2021

(The following establishes the courses mentioned in the Sailing Instructions Section 7 and replaces section 7)

### 7. COURSE

- A courtesy VHF Radio Broadcast, announcing the intended course will also be made prior to any preparatory signals. Failure to hear or receive this broadcast is not grounds for redress.
- Course Options will be posted on the regatta page of Yachtscoring.com by August 6, 2021.
- Summary of courses:

Course	Direction	Length NM
A	South	18.53
B	North	16.29
C	North	15.18
D	South	13.07
E	North	10.45
F	South then North	12.78

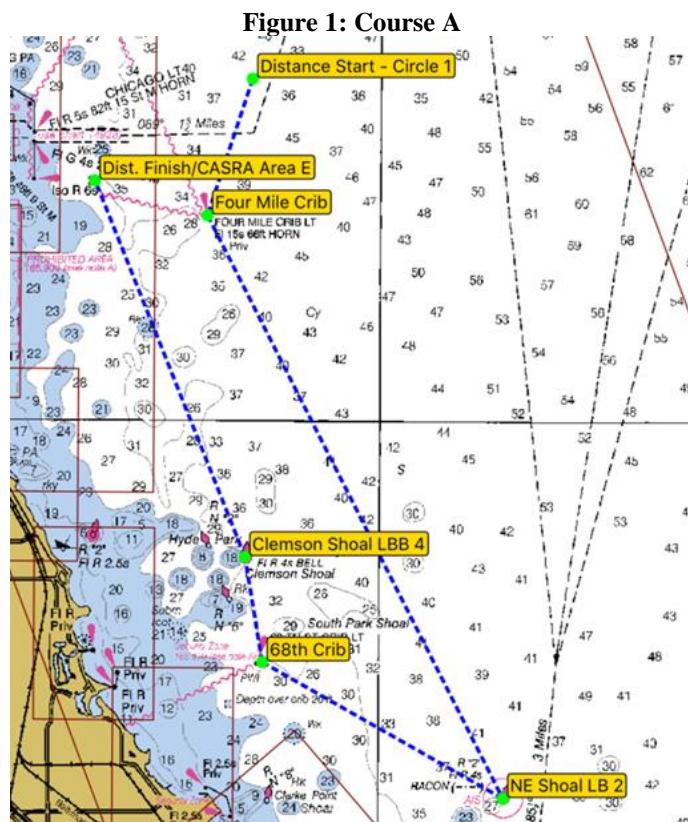
- Summary of waypoints:

MARK	LOCATION / Deg-Min.Dec Min	Reference / Deg-Min-Sec
Distance Start – Circle 1	41° 54.0' N, 087° 32.0' W	COLYC Distance Sailing Instructions
Clemson Shoal Lighted Bell Buoy 4	41° 48.41' N, 087° 32.08' W	Light List #19910: 41-48-24.565N, 087-32-04.726W
Distance Finish / CASRA Area E	41° 52.80' N, 087° 34.46' W	CASRA Area E-128° T, 0.9 NM from Chicago Harbor Light
Four Mile Crib	41° 52.4' N, 087° 32.7' W	Light List #19925: 41-52-24.000N, 087-32-42.000W
Harrison – Dever Crib	41° 55.00' N, 087° 34.30' W	Light List #20040: 41-55-00.000N, 087-34-18.000W
Indiana Shoal Buoy 2	41° 46.17' N, 087° 23.45' W	Light List #19785: 41-46-10.332N, 087-23-26.733W
North Offset Mark	41° 54.00' N, 087° 28.00' W	3 NM East of COLYC North Circle
Northeast Shoal Lighted Buoy 2	41° 45.60' N, 087° 28.03' W	Light List #19790: 41-45-36.268N, 087-28-02.018W
Sixty-Eighth Street Crib Light	41° 47.18' N, 087° 31.80' W	Light List #19870: 41-47-10.500N, 087-31-48.000W
Wilson Crib	41° 58.00' N, 087° 35.50' W	Light List #20135: 41-58-00.000N, 087-35-30.000W

# SAILING INSTRUCTIONS – Amendment

1. Course A (18.53 NM) will be signaled using a Marker Board on the Committee boat with the letter “A”.

<b>Course A</b>		
<b>MARK</b>	<b>LOCATION</b>	<b>ROUNDING</b>
Distance Start – Circle 1	41° 54.0' N, 087° 32.0' W	Between Mark and Flag on Boat
Four Mile Crib	41° 52.4' N, 087° 32.7' W	Leave to port
Northeast Shoal Lighted Buoy 2	41° 45.60' N, 087° 28.03' W	Leave to starboard
Sixty-Eighth Street Crib Light	41° 47.18' N, 087° 31.80' W	Leave to starboard
Clemson Shoal Lighted Bell Buoy 4	41° 48.41' N, 087° 32.08' W	Leave to port (avoid shallows to west)
Distance Finish / CASRA Area E	41° 52.80' N, 087° 34.46' W	Between Mark and Flag on Boat



# SAILING INSTRUCTIONS – Amendment

- Course B (16.29 NM) will be signaled using a Marker Board on the Committee boat with the letter “B”.

<b>Course B</b>		
<b>MARK</b>	<b>LOCATION</b>	<b>ROUNDING</b>
Distance Start – Circle 1	41° 54.0' N, 087° 32.0' W	Between Mark and Flag on Boat
Wilson Crib	41° 58.00' N, 087° 35.50' W	Leave to port
Harrison – Dever Crib	41° 55.00' N, 087° 34.30' W	Leave to port
Wilson Crib	41° 58.00' N, 087° 35.50' W	Leave to port
Distance Finish / CASRA Area E	41° 52.80' N, 087° 34.46' W	Between Mark and Flag on Boat

**Figure 2: Course B**

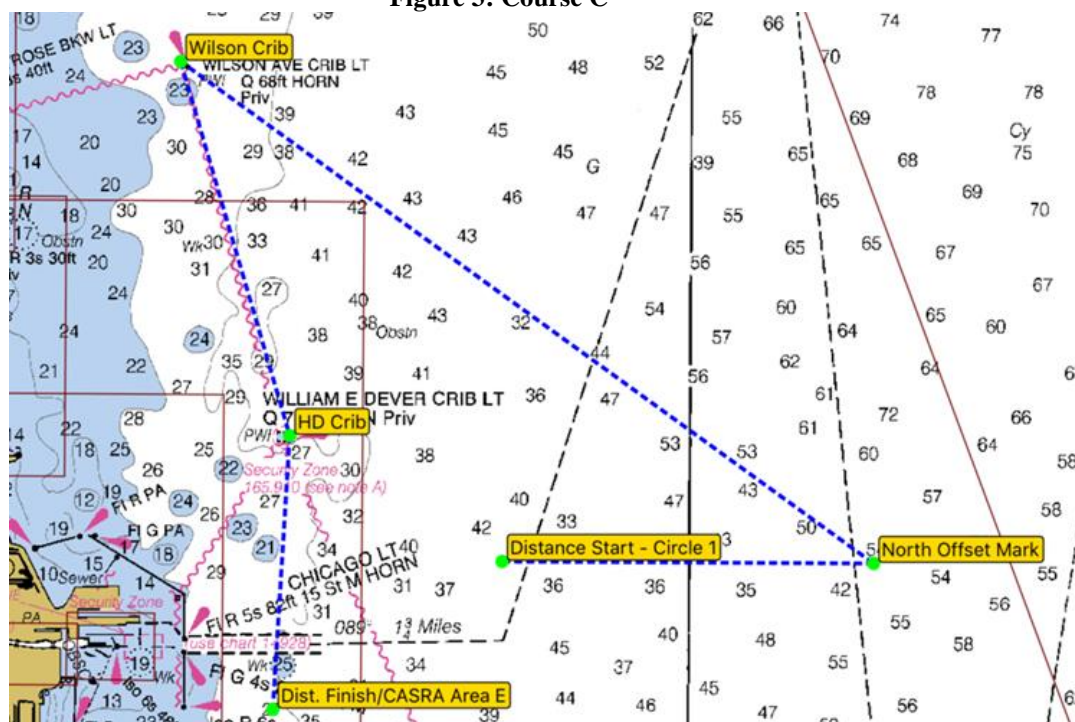


# SAILING INSTRUCTIONS – Amendment

- Course C (15.18 NM) will be signaled using a Marker Board on the Committee boat with the letter “C”.

<b>Course C</b>		
<b>MARK</b>	<b>LOCATION</b>	<b>ROUNDING</b>
Distance Start – Circle 1	41° 54.0' N, 087° 32.0' W	Between Mark and Flag on Boat
North Offset Mark	41° 54.00' N, 087° 28.00' W	Leave to port
Wilson Crib	41° 58.00' N, 087° 35.50' W	Leave to port
Harrison – Dever Crib	41° 55.00' N, 087° 34.30' W	Leave to starboard
Distance Finish / CASRA Area E	41° 52.80' N, 087° 34.46' W	Between Mark and Flag on Boat

Figure 3: Course C



# SAILING INSTRUCTIONS – Amendment

- Course D (13.07 NM) will be signaled using a Marker Board on the Committee boat with the letter “D”.

<b>Course D</b>		
<b>MARK</b>	<b>LOCATION</b>	<b>ROUNDING</b>
Distance Start – Circle 1	041° 54.0' N, 087° 32.0' W	Between Mark and Flag on Boat
Four Mile Crib	41° 52.4' N, 087° 32.7' W	Leave to port
Clemson Shoal Lighted Bell Buoy 4	41° 48.41' N, 087° 32.08' W	Leave to starboard (avoid shallows to west)
Sixty-Eighth Street Crib Light	41° 47.18' N, 087° 31.80' W	Leave to starboard
Clemson Shoal Lighted Bell Buoy 4	41° 48.41' N, 087° 32.08' W	Leave to port (avoid shallows to west)
Distance Finish / CASRA Area E	41° 52.80' N, 087° 34.46' W	Between Mark and Flag on Boat

Figure 4: Course D



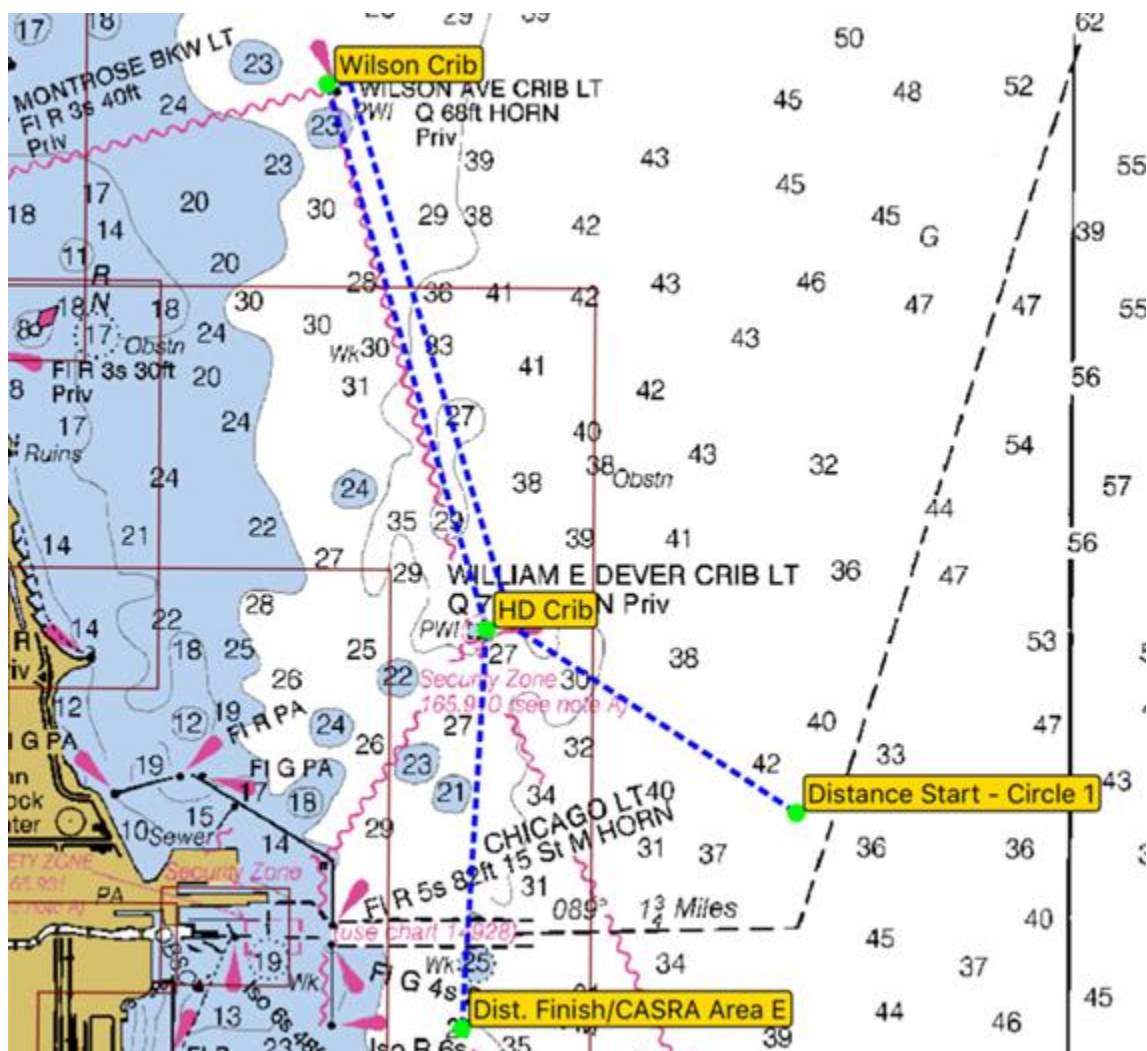


# SAILING INSTRUCTIONS – Amendment

- Course E (10.45 NM) will be signaled using a Marker Board on the Committee boat with the letter “E”.

<b>Course E</b>		
<b>MARK</b>	<b>LOCATION</b>	<b>ROUNDING</b>
Distance Start – Circle 1	041° 54.0' N, 087° 32.0' W	Between Mark and Flag on Boat
Harrison – Dever Crib	41° 55.00' N, 087° 34.30' W	Leave to starboard
Wilson Crib	41° 58.00' N, 087° 35.50' W	Leave to starboard
Harrison – Dever Crib	41° 55.00' N, 087° 34.30' W	Leave to starboard
Distance Finish / CASRA Area E	41° 52.80' N, 087° 34.46' W	Between Mark and Flag on Boat

Figure 5: Course E



# SAILING INSTRUCTIONS – Amendment

6. Course F (12.78 NM) will be signaled using a Marker Board on the Committee boat with the letter “F”.

<b>Course F</b>		
<b>MARK</b>	<b>LOCATION</b>	<b>ROUNDING</b>
Distance Start – Circle 1	041° 54.0' N, 087° 32.0' W	Between Mark and Flag on Boat
CASRA Area E (Floating mark, Also the finish mark)	41° 52.80' N, 087° 34.46' W	Leave to starboard
Harrison – Dever Crib	41° 55.00' N, 087° 34.30' W	Leave to port
Wilson Crib	41° 58.00' N, 087° 35.50' W	Leave to port
Distance Finish / CASRA Area E	41° 52.80' N, 087° 34.46' W	Between Mark and Flag on Boat

**Figure 6: Course F**

