



ETCHELLS RED FUNNEL TROPHY SATURDAY 29 – SUNDAY 30 MAY 2021

ORGANIZING AUTHORITY
ROYAL LONDON YACHT CLUB
IN CONJUNCTION WITH THE COWES ETCHELLS FLEET

SAILING INSTRUCTIONS

The notation '[DP]' in a rule in the Sailing Instructions (SIs) means that the penalty for a breach of that rule may, at the discretion of the Protest Committee, be less than disqualification.

1. RULES

- 1.1 The event will be governed by the rules as defined in *The Racing Rules of Sailing (RRS)*.
- 1.2 Reasonable actions by event officials to implement COVID-19 guidance, protocols or legislation, even if they later prove to have been unnecessary, are not improper actions or omissions.

2. CHANGES TO SAILING INSTRUCTIONS

- 2.1 Any change to the Sailing Instructions (SIs) made ashore will be posted by 0830 on the day it will take effect, except that any change to the schedule of races will be posted by 2000 on the day before it will take effect.

3. COMMUNICATIONS WITH COMPETITORS

- 3.1 Notices to competitors will be posted on the Official Notice Board (ONB).
- 3.2 The ONB will be online at www.yachtscore.com.
- 3.3 The Race Office is in the Royal London Yacht Club (RLYC).
- 3.4 The Race Committee intends to broadcast race information and course information on VHF Ch 77.
- 3.5 The Race Committee will announce approximate location of the committee boat at least 90 minutes before the first warning signal on VHF Ch 77 and or the WhatsApp group.
- 3.6 [DP] While racing, except in emergency, a boat shall not make voice or data transmissions and shall not receive voice or data communication that is not available to all boats.

4. TRACKERS

- 4.1 [DP] Boats may be supplied a tracker by the Organising Authority. The tracker shall be carried onboard when leaving its berth until it has returned ashore. Trackers shall be collected from and returned to the Etchells container at Cowes Yacht Haven. Trackers shall be returned within the protest time limit.

5. CODE OF CONDUCT

- 5.1 [DP] Competitors and support persons shall comply with reasonable requests from race officials.

6. SIGNALS MADE ASHORE

- 6.1 No signals will be displayed ashore. The race committee shall use the WhatsApp group to keep competitors informed whilst ashore.

7. SCHEDULE OF RACES

- 7.1 The Six races are scheduled. It is the intention of the Race Committee to complete three races on Saturday and three races on Sunday, however a maximum of four races per day may be sailed. The target time for each race will be 50 minutes.

- 7.2 Schedule:

Race Days	Saturday 29 May	Sunday 30 May
First warning signal	1155	1055
No warning signal after	--	1500

8. CLASS FLAGS

- 8.1 The class flag will be code flag E.

9. RACING AREA

- 9.1 Racing will take place from a Committee Vessel in the Central Solent.

10. COURSES

- 10.1 The courses will be windward/leeward courses. See Addendum A.
- 10.2 The race committee intends to display the course signal with the compass bearing and distance to Mark 1 on the committee vessel no later than the warning signal.

11. MARKS

- 11.1 Marks 1, 1a, 4s & 4p will be **red** inflatable marks.
- 11.2 If only one gate mark (4s or 4p) is in position, that mark shall be rounded to port.
- 11.3 The starting marks will be a committee vessel at the starboard end and a **black** inflatable mark at the port end.
- 11.4 The finishing marks will be a committee vessel and a **black** inflatable mark.

12. OBSTRUCTIONS

- 12.1 [DP] All yachts shall comply with Associated British Ports Notice to Mariners No 09 of 2021 giving details of a Precautionary Area and Moving Prohibited Zone (MPZ).

13. THE START

- 13.1 Races will be started by using RRS 26.
- 13.2 To alert boats that a race or sequence of races will begin soon, an orange start line flag will be displayed with multiple sound signals not less than five (5) minutes before a warning signal is displayed.
- 13.3 The starting line will be between a staff displaying an orange flag on the Committee Vessel at the starboard end and the course side of the port-end starting mark.
- 13.4 If any part of a boat's hull is on the course side of the starting line at her starting signal and she is identified, the race committee will attempt to hail her sail number, bow number or boat name using the designated VHF channel. Failure to hail her number, failure of her to hear such a hail, or the order in which boats are hailed will not be grounds for a redress for request. This changes RRS 62.1(a).
- 13.5 Bow numbers may also be used for Uniform and Black Flag notifications. This changes RRS 30.3 and 30.4.

14. CHANGE OF THE NEXT LEG OF THE COURSE

- 14.1 The position of any mark(s) may be adjusted by up to plus or minus 10 degrees relative to previous location and up to approximately 200 metres to windward or leeward without signalling Flag C, a direction signal, a length signal or a sound signal. This changes RRS 33. The RC will use the VHF 77 to alert competitors of the change.

- 14.2 When a change in the next leg of the course has been signalled, the Race Committee will lay the original mark (or move the finishing line) as soon as practicable.

14. THE FINISH

- 14.1 The finish line will be between a staff displaying a blue flag on the Committee Signal Vessel and the course side of the starboard-end finishing mark.

15. PENALTY SYSTEM

- 15.1 RRS 44.1 is changed so that the Two-Turns Penalty is replaced by the One-Turn Penalty, except that when she may have broken one or more rules of Part 2 while in the zone around a mark other than a starting mark, her penalty shall be a Two-Turns Penalty.

16. TIME LIMITS

- 16.1 The following time limits will apply.
- (a) The time limit for the first boat to sail the course and finish is 90 minutes.
 - (b) Finishing Window. The time limit for boats to finish after the first boat sails the course and finishes is 20 minutes. Boats that are still racing but do not finish within the Finish Window, will be scored Time Limit Expired (TLE). The TLE score will be equal to the number of boats to finish plus 2 points. This changes RRS 35, A5.1, A5.2 and A10.

17. HEARING REQUESTS

- 17.1 The protest limit is 90 minutes after the last boat has finished the last race of the day or the Race Committee signals no more racing today, whichever is later.
- 17.2 Hearing forms will be available at the Race Office and may also be available in the CYH Etchells container. Protest and requests for redress or reopening shall be delivered to the Race Office within the protest time limit. Contact mobile phone numbers should be included on the protest form.
- 17.3 Notices will be posted on the ONB and the event WhatsApp group no later than 30 minutes after the protest time limit to inform competitors of the hearings in which they are parties or named as witnesses. Hearings will be held in the protest room located at the RLYC.

18. SCORING

- 18.1 One (1) race is required to constitute a series.
- 18.2 When fewer than five (5) races have been completed, a boat's series score will be the total of her race scores.
- 18.3 When five (5) or more races have been completed, a boat's series score will be the total of her race scores excluding her worst score.

19. SAFETY REGULATIONS

- 19.1 [DP] The RC or Protest Committee may protest a boat for breach of the International Regulations for Preventing Collisions at Sea (IRPCAS) or the above regulations on the basis of a report from any source. This changes RRS 60.2(a) and 60.3(a).
- 19.2 [DP] Yachts should check in with the RC each day before the warning signal of their first race, by passing close on the starboard side of the main CV on port tack and await acknowledgement from the RC.
- 19.3 [DP] Retirement: A boat that retires from a race shall notify the RC by VHF before leaving the race area, or by telephoning the RLYC Race Office.

20. REPLACEMENT OF CREW OR EQUIPMENT

- 20.1 [DP] Substitution of competitors is not allowed without the prior written permission of the Race Committee.

21. OFFICIAL VESSELS

- 21.1 Official Boats will display a Royal London YC burgee.
- 21.2 The Committee Vessel will be a large motor launch Call Sign "Cowes United".
- 21.3 Mark laying vessels will be RLYC RIBs.

22. SUPPORT TEAMS

- 22.1 [DP] All support vessels shall carry a marine VHF radio and comply with RRS 37 'Search and rescue Instructions'.

- 22.2 [DP] Support boats shall stay outside the course area where boats are racing from the time of the preparatory signal for each start thereafter until all boats have finished or retired or the Race Committee signals a postponement, general recall or abandonment.

23. TRASH DISPOSAL

- 23.1 Trash may be placed aboard support or official boats.

24. HAUL OUT RESTRICTIONS

- 24.1 [DP] All boats shall be afloat by 1800 the day before the first race.
- 24.2 [DP] Boats shall not be hauled out during the event except with and according to the terms of prior written permission of the race committee.

25. DIVING EQUIPMENT AND PLASTIC POOLS

- 25.1 [DP] Underwater breathing apparatus and plastic pools or their equivalent shall not be used around competing boats between the preparatory signal of the first race and the end of the event.
- 25.2 [DP] Boats shall not be cleaned below the waterline by any means between the preparatory signal of the first race and the end of the event.

26. PRIZES

- 26.1 Prizes will be awarded as soon as possible after racing on Sunday 30 May 2021 at Cowes Yacht Haven to the following boats:
- 26.2 Red Funnel Trophy awarded to the overall winner.
- 26.3 Prizes will be awarded for the top three (3) boats.
- 26.4 The Corinthian Prize will be awarded to the highest placed boat sailed a WS Category 1 crew.
- 26.5 A prize will be awarded to the highest place boat sailed by youth crew.

27. RISK STATEMENT

- 27.1 RRS 3 states: "The responsibility for a boat's decision to participate in a race or to continue racing is hers alone."
- 27.2 Sailing is by its nature an unpredictable sport and therefore involves an element of risk. By taking part in the event, each competitor agrees and acknowledges that:
- (a) They are aware of the inherent element of risk involved in the sport and accept responsibility for the exposure of themselves, their crew and their boat to such inherent risk whilst taking part in the event;
 - (b) They are responsible for the safety of themselves, their crew, their boat and their other property whether afloat or ashore;
 - (c) They accept responsibility for any injury, damage or loss to the extent caused by their own actions or omissions;
 - (d) Their boat is in good order, equipped to sail in the event and they are fit to participate;
 - (e) The provision of a race management team, patrol boats, and other officials and volunteers by the event organiser does not relieve them of their own responsibilities;
 - (f) The provision of patrol boat cover is limited to such assistance, particularly in extreme weather conditions, as can be practicably provided in the circumstances;
 - (g) It is their responsibility to familiarise themselves with any risks specific to this venue or this event drawn to their attention in any rules and information produced for the venue or event and to attend any safety briefing held for the event.
 - (h) They are responsible for ensuring that their boat is equipped and seaworthy so as to be able to face extremes of weather; that there is a crew sufficient in number, experience and fitness to withstand such weather; and that the safety equipment is properly maintained, stowed and in date and is familiar to the crew.

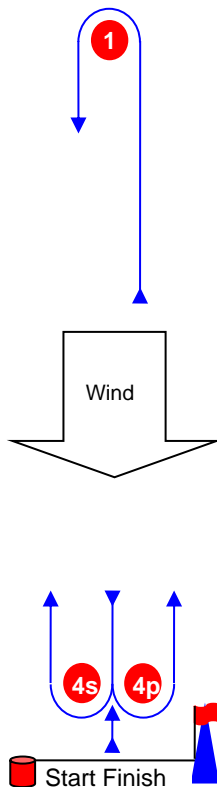
28. INSURANCE

- 28.1 Each participating boat is required to hold insurance cover and in particular to hold adequate insurance against third party claims of at least £3 million.

ADDENDUM A

Course Illustrations – Windward Leeward

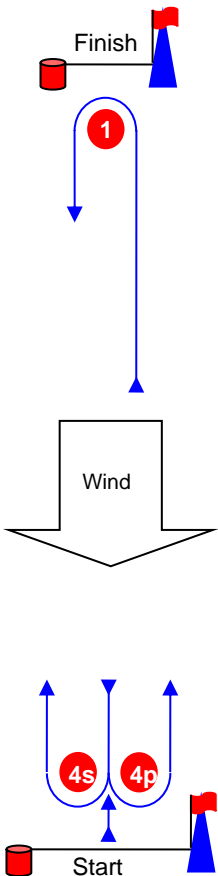
L



Course: Leeward finish

Signal	Mark Rounding Order
L2	Start – 1 – 4s/4p – 1 – Finish
L3	Start – 1 – 4s/4p – 1 – 4s/4p – 1 – Finish
L4	Start – 1 – 4s/4p – 1 – 4s/4p – 1 – 4s/4p – 1 – Finish

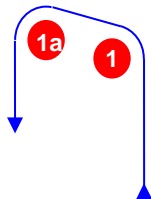
W



Course: Windward Finish

Signal	Mark Rounding Order
W2	Start – 1 – 4s/4p – Finish
W3	Start – 1 – 4s/4p – 1 – 4s/4p – Finish
W4	Start – 1 – 4s/4p – 1 – 4s/4p – 1 – 4s/4p – Finish

LA / WA



Course: Windward/leeward with offset mark 1a

Signal	Mark Rounding Order
LA2	Start – 1 – 1a – 4s/4p – 1 – 1a – Finish
LA3	Start – 1 – 1a – 4s/4p – 1 – 1a – 4s/4p – 1 – 1a – Finish
LA4	Start – 1 – 1a – 4s/4p – 1 – 1a – 4s/4p – 1 – 1a – 4s/4p – 1 – 1a – Finish
WA2	Start – 1 – 1a – 4s/4p – Finish
WA3	Start – 1 – 1a – 4s/4p – 1 – 1a – 4s/4p – Finish
WA4	Start – 1 – 1a – 4s/4p – 1 – 1a – 4s/4p – 1 – 1a – 4s/4p – Finish