

2021 EYC Boomerang Race
Saturday-Sunday, 10-12 July 2021
CBYRA Sanction #318
Sailing Instructions (SIs)
With Amendment No. 1



The notation '[NP]' in a rule means that a boat may not protest another boat for breaking that rule. This changes RRS 60.1(a).

1 RULES

- 1.1. The event is governed by the rules as defined in *The Racing Rules of Sailing*.

2 CHANGES TO SAILING INSTRUCTIONS

- 2.1. Any change to the sailing instructions will be posted before 0800 on the day it will take effect, except that any change to the schedule of races will be posted by 2000 on the day before it will take effect.

3 COMMUNICATIONS WITH COMPETITORS

- 3.1. On the water, the race committee intends to monitor and communicate with competitors on VHF radio channel 73.

4 CODE OF CONDUCT

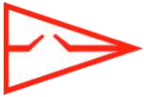
- 4.1 [DP] Competitors and support persons shall comply with reasonable requests from race officials.

5 SIGNALS MADE ASHORE

- 5.1. Signals made ashore before the race start shall be displayed from the EYC flagpole, located on the waterside of the clubhouse.
- 5.2. The Race Committee (RC) may announce signals posted ashore on VHF channel 73, and/or text message, and/or email. This announcement, lack thereof or contents thereof shall not be grounds for Redress or Protest. This changes RRS 41 and 62.1(a)
- 5.3. When flag AP is displayed ashore, '1 minute' is replaced with 'not less than 60 minutes' in Race Signals AP.

6 CLASS FLAGS – ORDER OF START

- 6.1. The start order will be posted to the Official Notice Board before 2000 hours on Friday, 9 July 2021.
- 6.2. [DP] [NP] All boats shall fly class flags specified in the CBYRA Green Book, or as identified in the start order posting noted SI 6.1.



7 MANDATORY CHECK-IN

- 7.1. The RC shall use a separate check-in vessel. The vessel shall fly a solid yellow flag and shall be located approximately 0.2 nm SE of the Triton Light of the US Naval Academy seawall. The approximate GPS coordinates of the Triton Light are Latitude 38° 58.884' N, Longitude 076° 28.574' W.
- [DP] [NP] Each boat shall pass close astern of the check-in vessel and hail her sail number until acknowledged by a return hail from the check-in vessel.
- 7.2. [DP] [NP] Each boat shall pass close astern of the check-in vessel and hail her sail number until acknowledged by a return hail from the check-in vessel.
- 7.3. The first sentence of RRS 28.1 is modified to “A boat shall check in, *start, sail the course* and then *finish*.” the rest of the rule is unchanged. This changes RRS 28.1 and A5.1.

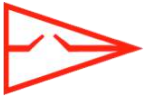
8 COURSES

- 8.1. RC intends to designate a course that is commensurate with the predicted conditions. Course “A” will be selected when conditions support a longer race distance; course “B” will be selected when conditions support a shorter race distance.
- 8.2. The designated course will be identified on a board displayed on the check-in vessel and the Signal Vessel. The board will show either “A” or “B” to indicate which course shall be sailed. The Signal Vessel will also attempt to repeatedly state the course designation on VHF channel 73 during the start sequences.
- 8.3. The failure of any boat to see the course board or hear the VHF broadcasts shall not be grounds for granting redress. This changes RRS 62.1(a).
- 8.4. Course diagrams and descriptions are provided in SIs Attachment A and noted below in the following table.

Course Designation	Class		
	<ul style="list-style-type: none"> J/35 Multihull A PHRF A0/A1 PHRF A2 ORC 	<ul style="list-style-type: none"> CHESSS (Spinnaker & Non-Spinnaker) CRCA-ORR (True Cruiser, Non-Spinnaker, Performance Cruiser, Racer-Cruiser) J/30 & J/105 Multihull B PHRF B ORC Cruiser 	<ul style="list-style-type: none"> Alberg 30 Cal 25
“A”	Figure 1 LONG Course	Figure 2 MEDIUM Course	Figure 4 MINI Course
“B”	Figure 2 MEDIUM Course	Figure 3 SHORT Course	Figure 4 MINI Course

9 THE START

- 9.1. Races shall be started using RRS 26.
- 9.2. The starting line will be between a staff displaying an orange flag on the RC Signal Vessel at the starboard end, and the course side of Severn River lighted buoy "G9



2021 EYC Boomerang Race
Sailing Instructions (SIs) with Amendment No. 1



Q G" at the port end. The approximate GPS coordinates are Latitude 38°58.704' N, Longitude 076°28.014' W.

- 9.3. [DP] If reasonably possible, a boat not racing shall not interfere with a boat that is racing.
- 9.4. A boat starting more than ten (10) minutes after the starting signal of the last class shall be scored Did Not Start (DNS). This changes RRS A4.

10 RECALLS

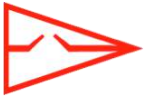
- 10.1. The RC intends to hail the sail numbers of OCS boats after the starting signal on VHF channel 73. A boat may not base a request for redress on the failure to hear or receive the announcement, the timeliness of the announcement, or the order in which boats are announced. This changes RRS 41 and 62.1(a).
- 10.2. If a general recall is made, classes which have not been recalled shall be started as though the general recall(s) had not been made. This modifies RRS 29.2. Recalled classes shall start in the order they were recalled, after the last scheduled start. This modifies RRS 29.2.

11 THE FINISH

- 11.1. The finishing line shall be between a staff displaying a blue flag on the RC Finish Vessel and the course side of Severn River lighted buoy "G5 FI G, 4s." The RC Finish Vessel will be anchored on the south side of Severn River lighted buoy "G5 FI G, 4s."
- 11.2. The RC Finish Vessel expects to be on station on the southwest side of Severn River lighted buoy "G5 FI G, 4s" beginning at approximately 2330 hours on Saturday, 10 July 2021, until 1200 hours on Sunday, 11 July 2021, or when all competitors have finished or withdrawn, whichever occurs first.
- 11.3. [DP] [NP] When finishing before sunrise, boats shall illuminate their sail numbers within two hundred (200) yards of the finish line, until two hundred (200) yards past the finish line.
- 11.4. If the RC Finish Vessel is not on station, a boat shall take her finish time when she passes Severn River lighted buoy "G5 FI G, 4s" within one hundred (100) yards and the mark bears 055° degrees magnetic. Boats recording their own finish shall report their finish time to the RC as soon as practical after finishing by Contacting the Principal Race Officer (PRO) and leaving a message on the EYC cell phone, (410) 271-7193, or via email at race.committee@eastportyc.org.

12 HEARING REQUESTS

- 12.1. Scoring Inquiries shall be submitted within the Protest Time Limit.
- a. Scoring inquiries shall be submitted via the "Online Scoring Inquiry Filing" link found on the Yacht Scoring event main page.
- b. Scoring inquiries may be resolved via teleconference or video conference.
- 12.2. Protests and Requests for Redress shall be filed within the Protest Time Limit. Electronic submittal shall be used and is available via the "Owner's Corner" link found on the Yacht Scoring event main page or via email to race.committee@eastportyc.org. A diagram of the incident, if applicable, cannot be submitted via Yacht Scoring, and should be scanned and emailed to the Race Committee at race.committee@eastportyc.org prior to the hearing.



2021 EYC Boomerang Race
Sailing Instructions (SIs) with Amendment No. 1



- 12.3. The alternative penalty acceptance form (RRS Appendix V2) will be available via the “Documents & Forms” link found on the Yacht Scoring event main page. The form may also be emailed to the Race Committee at race.committee@eastportyc.org.
- 12.4. The protest time limit is sixty (60), minutes after the RC Signal Vessel dock time. This posting constitutes the notification required in RRS 61.3. The time limit for a Request for Redress based on an incident in the racing area shall be the Protest Time Limit. This changes RRS 62.2.
- 12.5. The Protest Committee may schedule a hearing prior to the Protest Time Limit if the parties and witnesses are available and have had time to prepare for the hearing. Protest and/or request for redress hearings will be virtual hearings. The parties to a virtual hearing are responsible for having their witnesses, if any, present at the beginning of the hearing. The time and location of each protest hearing will be posted on the Official Notice Board. Parties and witnesses are encouraged to download and review the Protest Procedure Guidelines & Code of Conduct for Remote Hearings, available via the “Documents & Forms” link found on the Yacht Scoring event main page.

13 SCORING

- 13.1. ORC classes will be scored in accordance with ORC Time-on-Time Triple Number All Purpose ratings.

14 SAFETY REGULATIONS

- 14.1. [DP] [NP] A boat that retires from a race shall notify the RC as soon as possible either by hail, on VHF channel 73, by phone via the EYC cell phone at (410) 271-7193, or via email at race.committee@eastportyc.org. A voicemail message shall include the approximate time of the message, the skipper’s name, boat name, and sail number.
- 14.2. DP] [NP] A boat shall not exercise right of way, cross in proximity to, or interfere with reasonable transit of the race area by commercial traffic of any kind. Boats must take evasive action well in advance of a potentially dangerous situation. The US Coast Guard, ship captains, and bay pilots have been encouraged to report any incident they observe.
- 14.3. [NP] A boat without way may use any means of propulsion to avoid underway commercial traffic, provided:
- (a) the boat does not gain an advantage;
 - (b) using the propulsion is the boat's only means of avoiding the commercial traffic;
- and,
- (c) the boat submits a report (in writing or by email) to the RC by the protest time limit that describes the incident and the boat's actions.
- 14.4. [NP] The RC or Protest Committee may protest a boat for SI 14.2 and 14.3 based on information received from any source. The protest time limit does not apply. This changes RRS 60.2, RRS 60.3, RRS 61.3, and 63.6 (c).
- 14.5. [DP] A boat racing between sunset and sunrise that is within 100 meters of other vessels shall illuminate her sails so that she is clearly visible. This requirement is in



2021 EYC Boomerang Race
Sailing Instructions (SIs) with Amendment No. 1

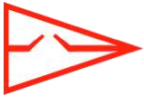


addition to the navigation lights and shapes required by the Inland Rules and other applicable government regulations.

15 TRASH DISPOSAL

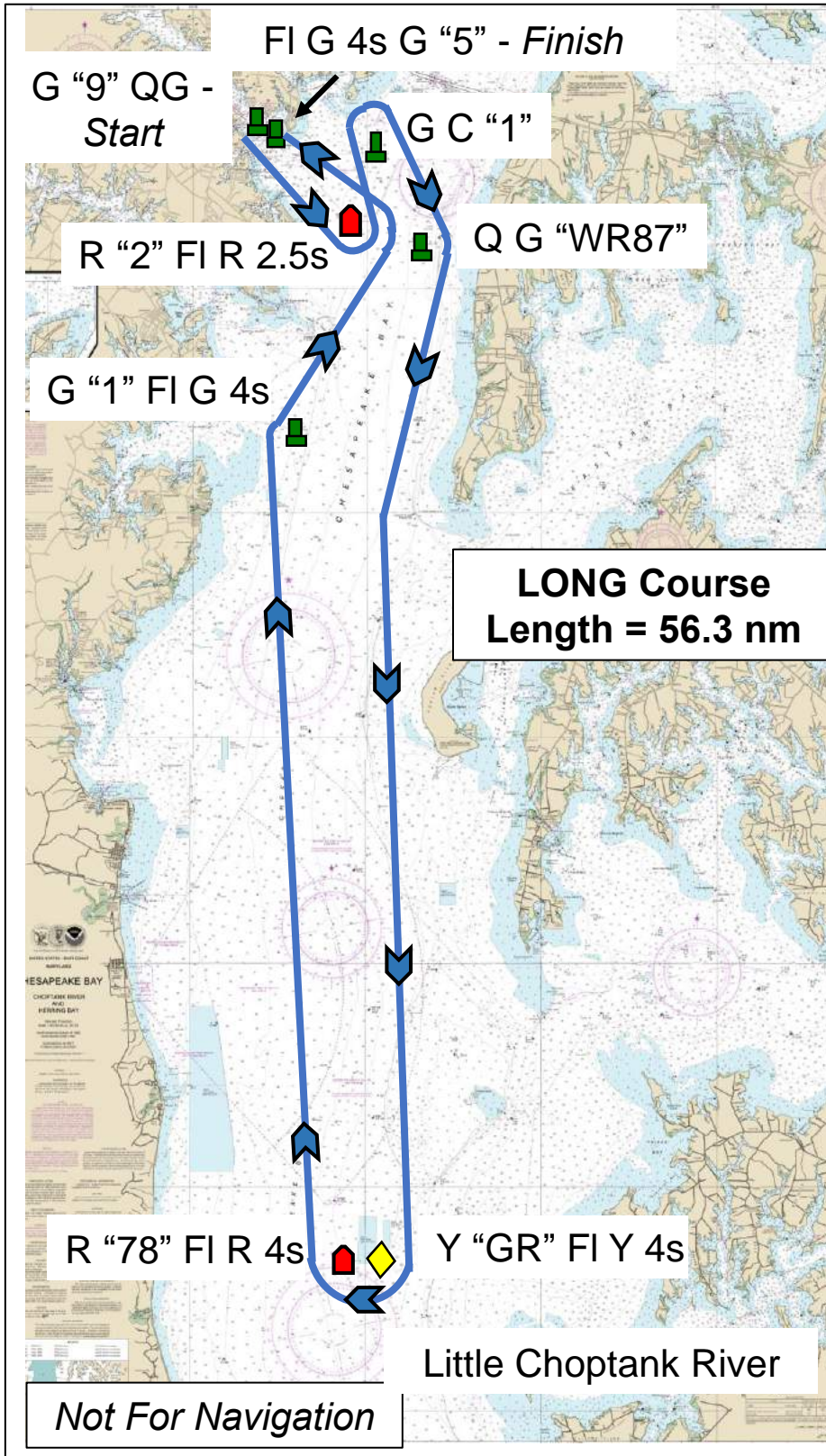
[DP] This is a Clean Regatta; all competitors are strongly encouraged to use multi-use water bottles instead of disposable water bottles, and to recycle whenever possible.





SIs Attachment A

Notes

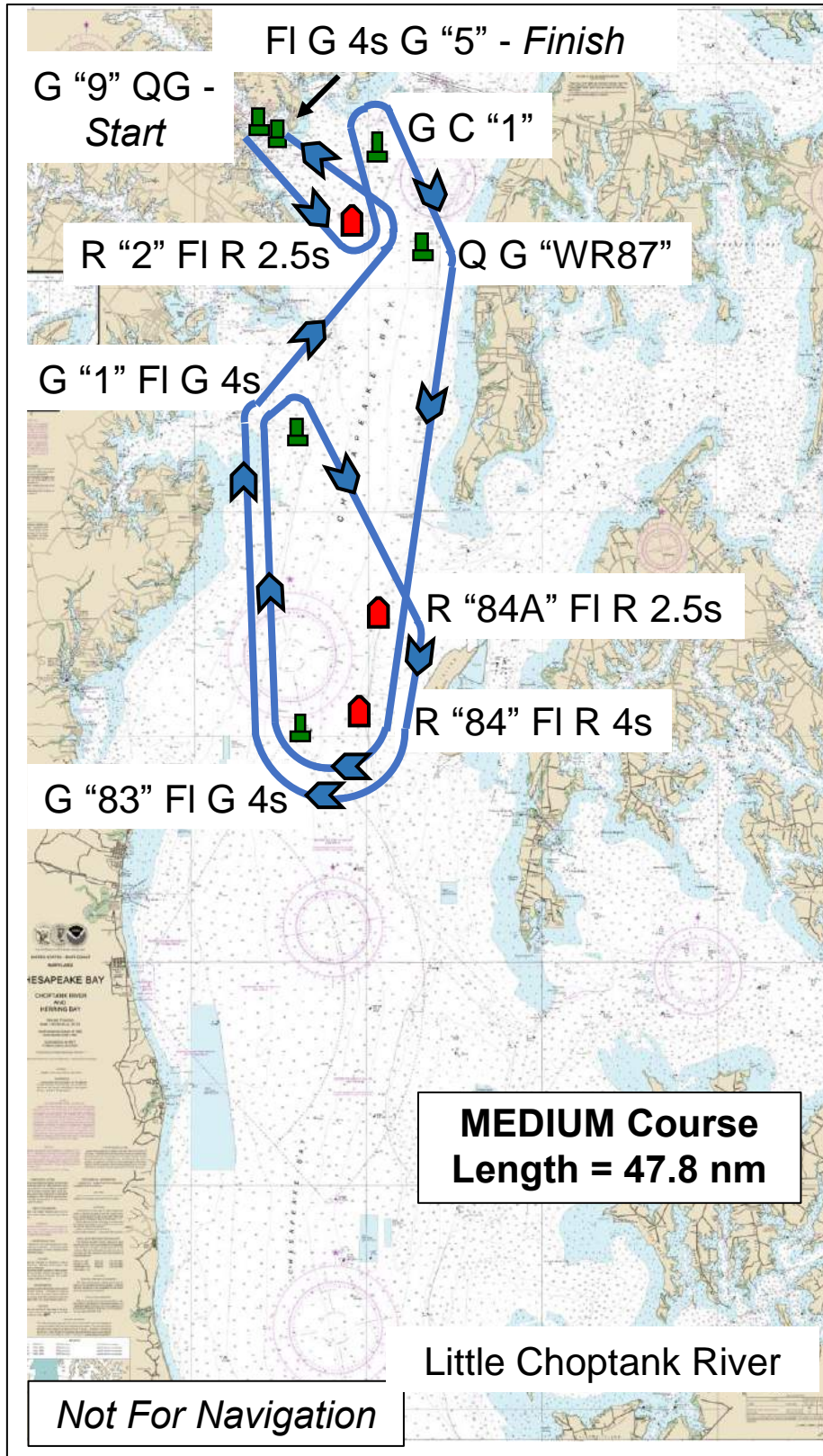
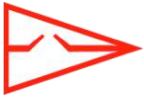


1. Bloody Pt. Bar Warning Light, Horn Point (HP), Severn River R4 (FI R 6s "4") Thomas Pt. Light and Tolley Point (FI G 4s 15ft 4M "1AH") shall always be passed on their channel side.

2. R "2" FI R 2.5s is **not** a mark of the course on the leg from G C "1" to Q G "WR87" and may be passed on either side.

3. Q G "WR87" is **not** a mark of the course on the leg from G "1" FI G 4s to R "2" FI R 2.5s and may be passed on either side.

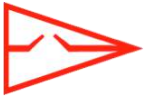
4. G "1" FI G 4s is **not** a mark of the course on the leg from Q G "WR87" to Y "GR" FI Y 4s and may be passed on either side.



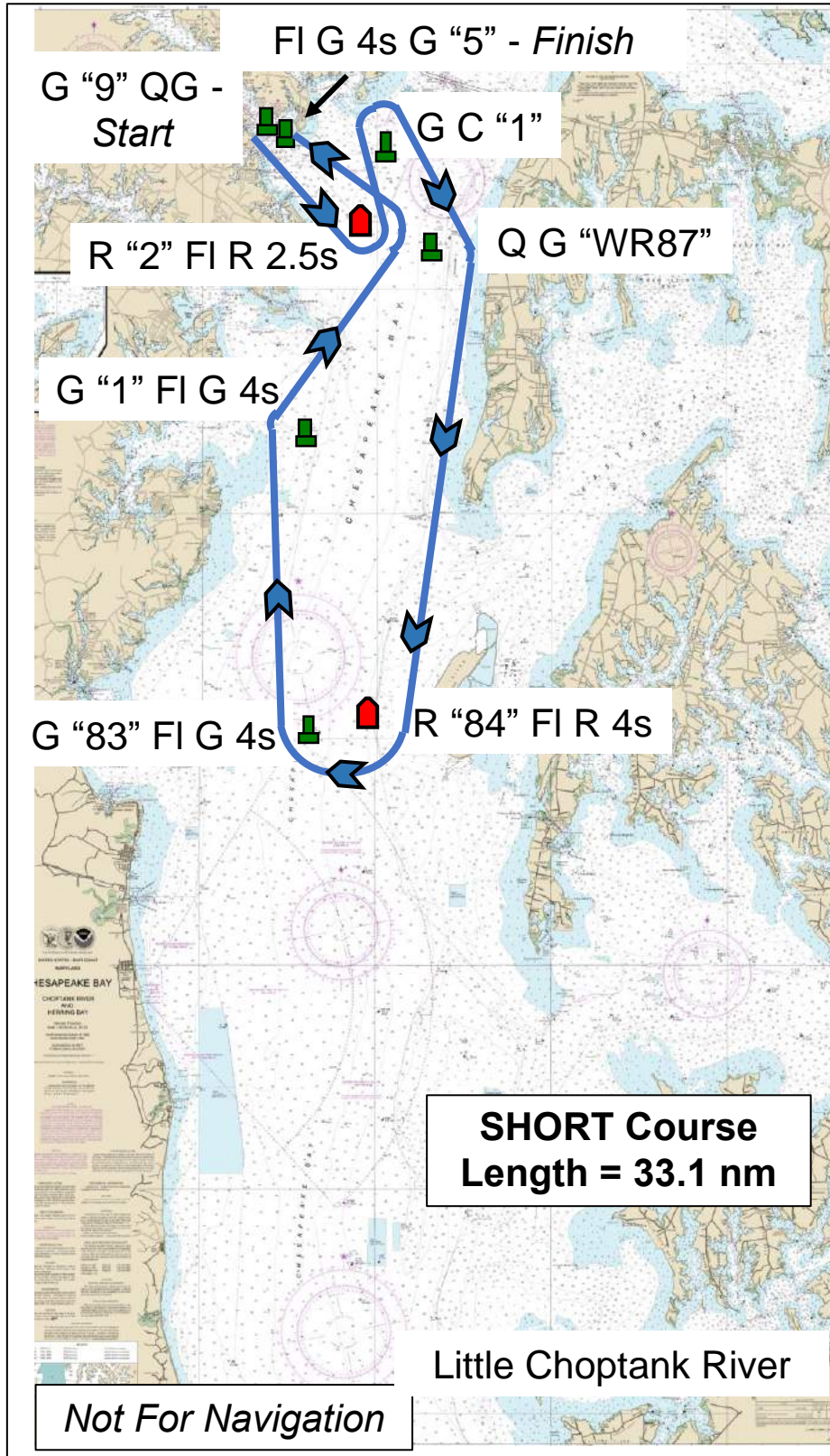
1. Bloody Pt. Bar Warning Light, Horn Point (HP), Severn River R4 (FI R 6s "4") Thomas Pt. Light and Tolley Point (FI G 4s 15ft 4M "1AH") shall always be passed on their channel side.

2. R "2" FI R 2.5s is **not** a mark of the course on the leg from G C "1" to Q G "WR87" and may be passed on either side.

3. Q G "WR87" is **not** a mark of the course on the leg from G "1" FI G 4s to R "2" FI R 2.5s and may be passed on either side.



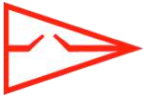
2021 EYC Boomerang Race
Sailing Instructions (SIs) with Amendment No. 1



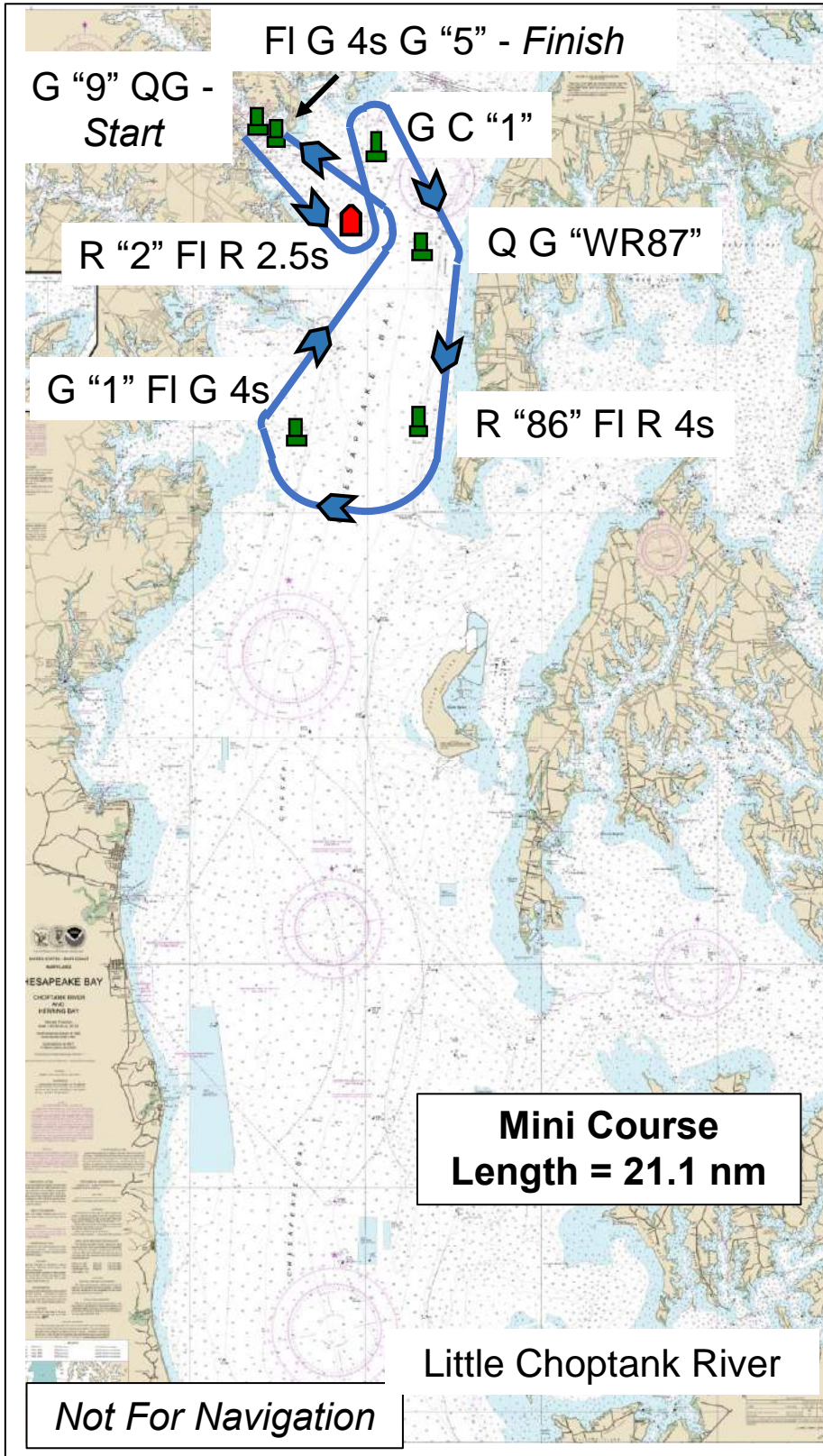
1. Bloody Pt. Bar Warning Light, Horn Point (HP), Severn River R4 (FI R 6s "4") Thomas Pt. Light and Tolley Point (FI G 4s 15ft 4M "1AH") shall always be passed on their channel side.

2. R "2" FI R 2.5s is **not** a mark of the course on the leg from G C "1" to Q G "WR87" and may be passed on either side.

3. Q G "WR87" is **not** a mark of the course on the leg from G "1" FI G 4s to R "2" FI R 2.5s and may be passed on either side.



2021 EYC Boomerang Race
Sailing Instructions (SIs) with Amendment No. 1



1. Bloody Pt. Bar Warning Light, Horn Point (HP), Severn River R4 (FI R 6s "4") Thomas Pt. Light and Tolley Point (FI G 4s 15ft 4M "1AH") shall always be passed on their channel side.

2. R "2" FI R 2.5s is **not** a mark of the course on the leg from G C "1" to Q G "WR87" and may be passed on either side.

3. Q G "WR87" is **not** a mark of the course on the leg from G "1" FI G 4s to R "2" FI R 2.5s and may be passed on either side.