

St Maarten Heineken Regatta

Sint Maarten Heineken Regatta Foundation



March 1 – March 6, 2022

Racing March 3-6, 2022

Regatta Village at Port de Plaisance, *Sint Maarten*

<http://heinekenregatta.com>

SAILING INSTRUCTIONS

1. RULES

- 1.1. The event is governed by the rules as defined in *The Racing Rules of Sailing*.

2. CHANGES TO SAILING INSTRUCTIONS

- 2.1. Any change to the sailing instructions will be posted by 0800 on the day it will take effect, except any change to the schedule of races will be posted by 2000 on the day before it will take effect.

3. COMMUNICATION WITH COMPETITORS

- 3.1. Notices to competitors will be posted on the official notice board located at URL: <https://yachtscoring.com/emenu.cfm?eID=14412> and may also be posted on the notice board located at the Regatta Village at Port de Plaisance.
- 3.2. On the water, the race committee intends to monitor and communicate with competitors on the following VHF radio channels:
- a) Committee Boat A: VHF 71
 - b) Committee Boat B (if used): VHF 72
 - c) Committee Boat C (if used): VHF 77
 - d) Simpson Bay Finish: VHF 73
- 3.3. The race committee will regularly broadcast its intentions for the day's schedule from one hour before the first scheduled warning signal.
- 3.4. Additionally, the race committee may broadcast time checks prior to the first scheduled start of each day.

4. CODE OF CONDUCT

- 4.1. [DP] Competitors and support persons shall comply with reasonable requests from race officials.
- 4.2. [DP] Competitors and support persons shall place advertising provided by the organizing authority with care, seamanship, in accordance with any instructions for its use and without interfering with its functionality.

5. SIGNALS MADE ASHORE

- 5.1. Signals made ashore will be displayed at the flagpole located at the Regatta Village at Port de Plaisance.

6. IDENTIFICATION

- 6.1. All boats with sail numbers on her sails shall provide that information at registration.
- 6.2. Boats without sail numbers may be provided with bow and stern numbers at registration and if provided they shall be clearly displayed on both sides, large numbers at the bow and small numbers at the stern of the boat.

7. CLASSES AND CLASS FLAGS

- 7.1. A list of classes and class flags and the appropriate flag will be provided to each boat at registration.
- 7.2. Class flags provided shall be displayed prominently on the boat at the stern, preferably from the backstay.

St Maarten Heineken Regatta

Sint Maarten Heineken Regatta Foundation



8. LOCATION, SCHEDULE, AND ORDER OF STARTS

- 8.1. The planned schedule of races, race area location, the classes using each race area, and the order of starts for the first race of the day will be posted by 2000 the day before each day of racing.
- 8.2. Subsequent races will start as soon as possible after the end of the previous race, and the order and planned times of these starts will be announced by the race committee, by VHF.
- 8.3. To alert boats that a race or sequence of starts will begin soon, the orange starting line flag may be displayed (with one sound) as an attention signal approximately five minutes before the first warning signal.

9. COURSES

- 9.1. The diagrams in [ADDENDUM A – WINDWARD LEEWARD COURSES](#) show the windward leeward courses, the approximate angle between legs, the order in which marks are to be passed, and the side on which each mark is to be left.
- 9.2. The diagrams in [ADDENDUM B – RANDOM LEG COURSES](#) show the courses, including the course signals, the descriptions and approximate locations of the marks, the order in which marks are to be passed, and the side on which each mark is to be left.
- 9.3. The course designation will be displayed on a placard from the signal vessel.
- 9.4. The course axis, compass bearing, and range to the first mark for each class maybe provided by the race committee, by VHF.
- 9.5. The course to be sailed, for each class may be announced by VHF before the start for that class and may be transmitted by other electronic means in addition.

10. MARKS

- 10.1. Start marks will be orange inflated shapes.
- 10.2. For courses in [ADDENDUM A – WINDWARD LEEWARD COURSES](#) marks will be as follows:
 - a) Mark 1 will be a yellow inflatable shape.
 - b) Mark 2 will be an orange inflatable shape.
 - c) Marks 3S and 3P will be inflatable shapes.
 - d) The finishing mark will be an inflatable shape.
- 10.3. For courses in [ADDENDUM B – RANDOM LEG COURSES](#) marks will be one of:
 - a) Orange, Yellow, Red or White inflated shape, some of which may display advertising described in [ADDENDUM D – SCHEDULE OF SEMI-PERMANENT MARKS](#), or
 - b) Mark H will be orange inflatable shape with Heineken banner, or
 - c) Navigational marks, rocks, islets, or islands or groups thereof described in [ADDENDUM E – SCHEDULE OF ROCKS, ISLETS, AND ISLANDS OR GROUPS THEREOF](#).
 - d) The finishing mark will be an inflated shape.
- 10.4. If a mark is missing and the race committee is unable to replace it in accordance with RRS 34, boats shall round the Lat/Long location of the mark listed in the sailing instructions. This modifies RRS 34.
- 10.5. In addition to the provisions to RRS 33, the race committee may announce by VHF any change of mark description.

11. AREAS THAT ARE OBSTRUCTIONS

- 11.1. [DP] While racing, no part of a boat's hull shall cross the lines or areas listed below and as shown in the diagrams in [ADDENDUM F – AREAS THAT ARE OBSTRUCTIONS](#). These lines or areas rank as obstructions, are the limit of safe pilotage and boats shall not cross these lines while racing.
 - a) The entire area of Cole Bay between any Yellow cardinal buoy or mark and the shoreline of Cole Bay.
 - b) The area of Maho Bay (airport) between any Yellow restriction mark and the shoreline of Maho Bay.

St Maarten Heineken Regatta

Sint Maarten Heineken Regatta Foundation



- c) The area between mark 05, which is to the west of a submerged rock approximately 0.15nm west of Point Plum, and the nearest shoreline on Point Plum.
- d) The area between Cow and Calf.
- e) The area between the Hen and Chickens of the Poulets.
- f) The area between Molly Beday West and East.
- g) The area between Rocher Creole and the nearest shoreline on St Martin.

12. THE START

- 12.1. The start line will be between a staff displaying an orange flag or shape on the race committee vessel and the course side of the starting mark.
- 12.2. [DP] Boats whose warning signal has not been made shall avoid the starting area during the starting sequence for other races.
- 12.3. A boat that does not start within 10 minutes after the last starting signal in a sequence of consecutive starts in which her class started will be scored Did Not Start without a hearing. This changes RRS A4 and A5.

13. THE FINISH

- 13.1. The finish line will be between a staff display a blue flag on a race committee vessel and the course side of the finishing mark.

14. RACE TIME LIMIT

- 14.1. If no boat *starts, sails the course and finishes* by 1700, (1500 on the last day), the race will be abandoned.
- 14.2. Boats failing to *finish* by 1700, (1500 on the last day), after the first boat *starts, sails the course and finishes* will be scored in accordance with NoR 13.4. This changes RRS 35, A5.1, A5.2, and A10.
- 14.3. The race committee may assign a finish position to the last boats provided that their position can be determined in a reasonable manner. A boat whose finish position has been so established will be notified by the race committee. Boats assigned in this manner will not be subject to redress. This changes RRS 62.1(a).

15. PROTESTS AND REQUESTS FOR REDRESS

- 15.1. Protests and requests for redress or reopening shall be filed online at URL https://www.racingrulesofsailing.org/protests/new?event_id=3282 or delivered to the protest desk within the appropriate time limit. Hearing request forms are available at the protest desk, located at the venue.
- 15.2. Notices of protest will be posted URL <https://www.racingrulesofsailing.org/schedules/3282/event>
- 15.3. For each class, the protest time limit is two hours after the last boat has finished the last race of the day or the race committee signals no more racing today, whichever is later. Bridge opening times and the return of boats to moorings will not normally be considered as a reason to extend a protest time limit.
- 15.4. Notices will be posted no later than 30 minutes after the protest time limit to inform competitors of hearings in which they are parties or named as witnesses. Hearings will be held in the protest room, located at the venue beginning at the time posted.
- 15.5. When all parties are present at the protest desk, every reasonable effort will be made to begin arbitration under RRS Appendix T, or to hold a hearing as soon as possible, even if it is prior to the posted hearing time.
- 15.6. Notices of protests by the race committee, technical committee or international jury will be posted to inform boats under RRS 61.1b.
- 15.7. On the last scheduled day of racing of the regatta a request for redress based on an international jury decision shall be delivered no later than 30 minutes after the decision was posted. This changes RRS 62.2.

St Maarten Heineken Regatta

Sint Maarten Heineken Regatta Foundation



- 15.8. When the jury sits with a panel of fewer than 5 members, in accordance with Appendix N 1.4 b) the time limit for the parties to request a full international jury hearing shall be thirty minutes from the time the initial decision is announced.
- 15.9. The jury may impose a discretionary penalty for breaches of rules, except for breaches of Part 1 and Part 2 of the racing rule of sailing. The St Maarten Heineken Regatta Discretionary Penalties Guidelines shall be used. This changes RRS 64.2.
- 15.10. Decisions of the international jury will be final as provided in RRS 70.5.

16. SAFETY REGULATIONS

- 16.1. [DP] No boat shall race with an anchor overhanging the bow or forward crossbeam. Written application made prior to the close of registration for exemption from this requirement may be made to the race committee, who may, at their sole discretion, grant exemption from this instruction and the associated regulation in the St. Maarten Heineken Regatta Safety and Equipment Regulations.
- 16.2. [DP] A boat that does not intend to finish a race, or retires from a race after breaking a rule, shall notify the race committee by VHF before leaving the race area or by telephoning or emailing the race committee Desk: email rc@heinekenregatta.com telephone +1 721-554-4946

17. EQUIPMENT AND MEASUREMENT CHECKS

- 17.1. A boat or her equipment may be inspected at any time for compliance with the *rules* by a member of the technical committee.
- 17.2. On the water, a boat instructed by a member of the technical committee to proceed to a designated area for inspection shall comply with those instructions.

18. USE OF ENGINES

[DP] Any boat that uses her engine for propulsion while racing and does not retire shall submit a written report of the incident including the time and distance covered and the reasons for using the engine to the jury within the protest time. The jury may, following a hearing take any action it deems appropriate.

19. RISK STATEMENT

RRS 3 states: 'The responsibility for a boat's decision to participate in a race or to continue to race is hers alone.' By participating in this event each competitor agrees and acknowledges that sailing is a potentially dangerous activity with inherent risks. These risks include strong winds and rough seas, sudden changes in weather, failure of equipment, boat handling errors, poor seamanship by other boats, loss of balance on an unstable platform and fatigue resulting in increased risk of injury. **Inherent in the sport of sailing is the risk of permanent, catastrophic injury or death by drowning, trauma, hypothermia or other causes.**

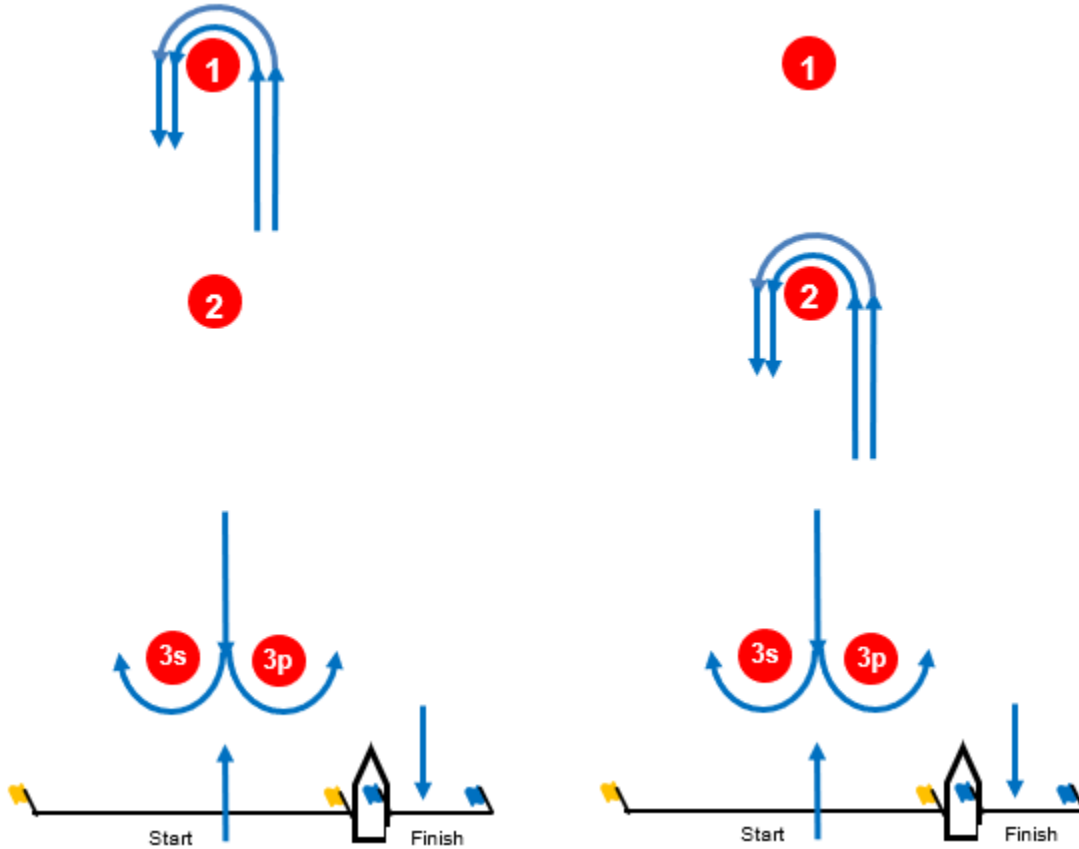
St Maarten Heineken Regatta

Sint Maarten Heineken Regatta Foundation



ADDENDUM A – WINDWARD LEEWARD COURSES

Windward-Leeward Course (Short and Long leg course examples)



Course #

Legs

Mark Rounding Order

marks 1 & 2 rounded to port, mark 3 is a gate

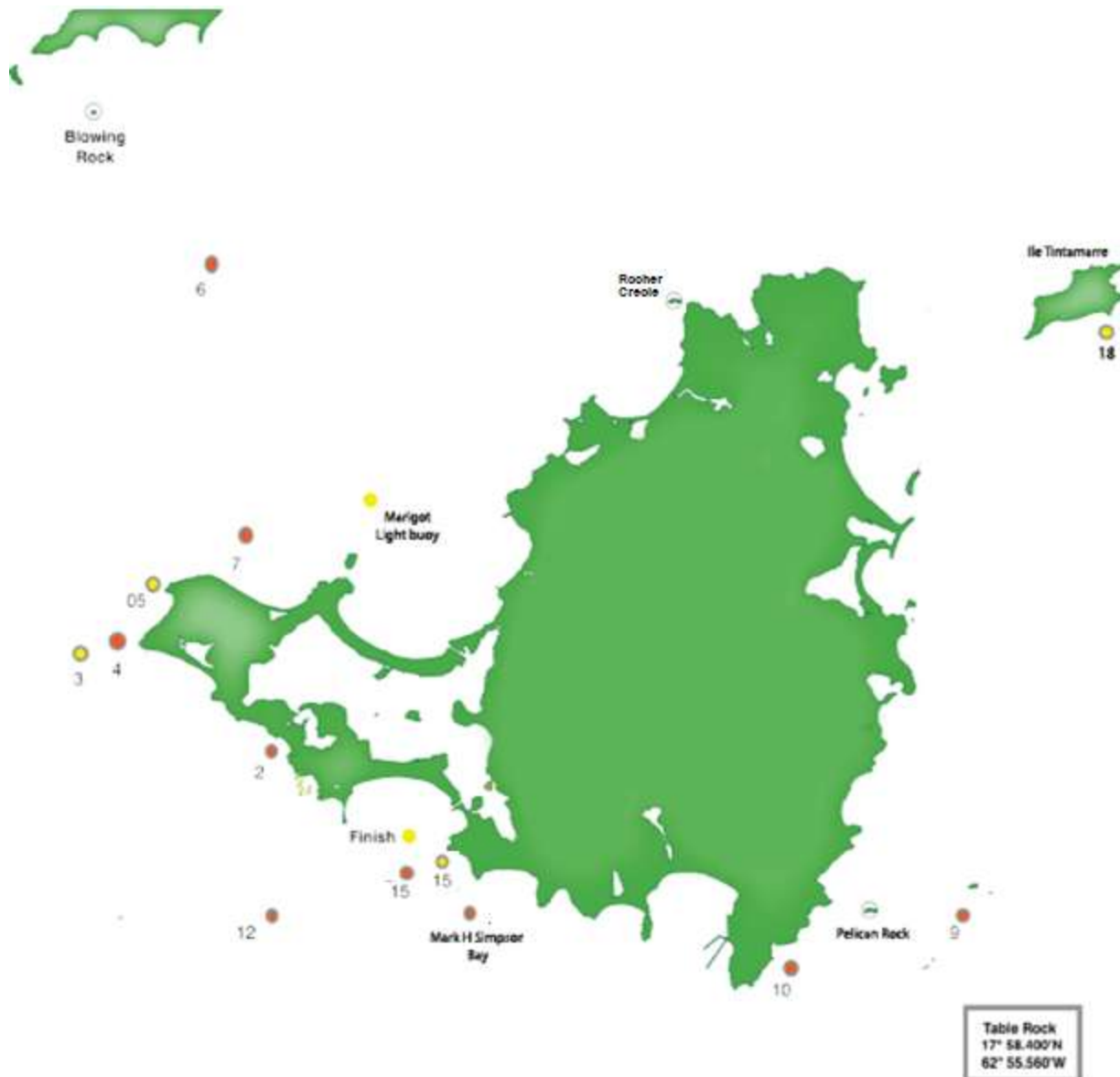
A	(4 legs)	Start – 1 – 3s/3p – 1 – Finish
B	(4 legs)	Start – 1 – 3s/3p – 2 – Finish
C	(4 legs)	Start – 2 – 3s/3p – 2 – Finish

St Maarten Heineken Regatta

Sint Maarten Heineken Regatta Foundation



ADDENDUM B – RANDOM LEG COURSES



1. All Marks Rounded to Port unless otherwise indicated.
2. All courses start in Simpson Bay and finish in Simpson Bay
3. If mark H is used it will be set to windward of the start line.
4. The distance and bearing to Mark H will be announced on the Race Area VHF channel.
5. All distances are in nautical miles
6. Boats may pass through the French nature reserve surrounding Ile Tintamarre.
7. Mark 15 is a gate mark comprised of two marks 15p and 15s.

St Maarten Heineken Regatta

Sint Maarten Heineken Regatta Foundation



SIMPSON BAY COURSES

Course	Distance	Mark Rounding Order
21	7.0	Start, Hs, 12s, 02s, 15p/15s, Finish
23	9.9	Start, 10, 15p/15s, Finish
24	10.9	Start, Hs, 12s, 03, 15p/15s, Finish
25	11.8	Start, Pelican Rock, 15p/15s, Finish
26	13.0	Start, 09, 15p/15s, Finish
27	15.0	Start, Hs, 12s, 04s, 05s, 07, 05, 03, 15p/15s, Finish
28	15.4	Start, Oyster Pond, 15p/15s, Finish
29	18.4	Start, Hs, 12s, 04s, 05s, 07, 06, 03, 15p/15s, Finish
30	19.3	Start, Hs, 12s, 04s, 05s, Marigot Light, 05, 03, 15p/15s, Finish
32	21.7	Start, Hs, 12s, 04s, Blowing Rock, 03, 15p/15s, Finish
33	21.7	Start, Hs, 12s, 04s, 05s, Marigot Light, 06, 03, 15p/15s, Finish
34	23.0	Start, Hs, 12s, 04s, 05s, 07, Blowing Rock, 03, 15p/15s, Finish
35	23.7	Start, 18, 15p/15s, Finish
36	25.6	Start, Table Rock, 15p/15s, Finish
37	26.4	Start, Ile Tintamarre, 15p/15s, Finish
38	30.3	Start, Ile Fourchue, 15p/15s, Finish
39	30.4	Start, Hs, 12s, 04s, 05s, Marigot Light, Blowing Rock, 03, 15p/15s, Finish

Round the Island Courses

40	24.7	Start, 04s, 05s, Rocher Creole(s), St Maarten(s), 15p/15s, Finish
41	28.2	Start, 04s, 05s, Rocher Creole(s), Ile Tintamarre(s), 15p/15s, Finish
42	27.8	Start, Hs, 12s, 04s, 05s, Rocher Creole(s), St Maarten(s), 15p/15s, Finish
43	31.3	Start, Hs, 12s, 04s, 05s, Rocher Creole(s), Ile Tintamarre(s), 15p/15s, Finish

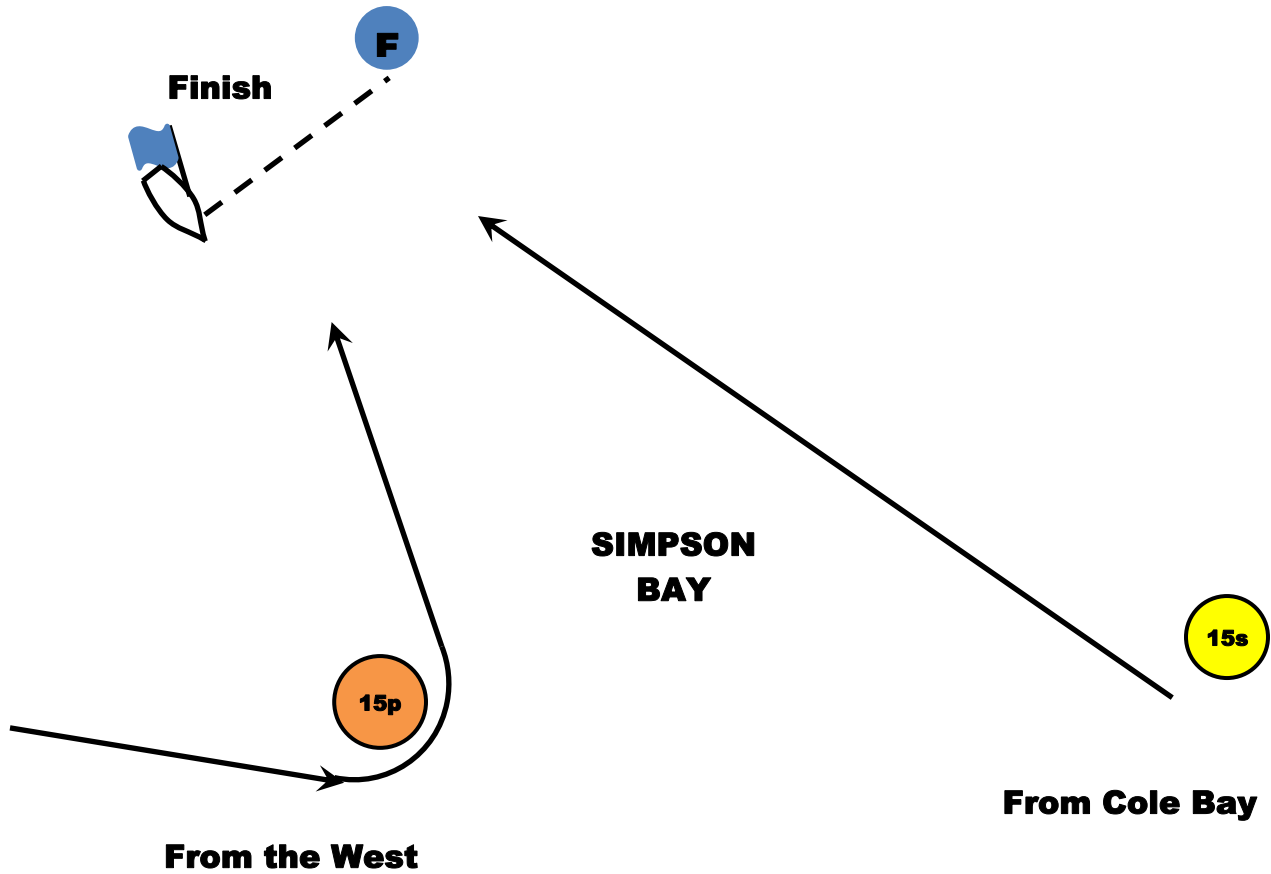
St Maarten Heineken Regatta

Sint Maarten Heineken Regatta Foundation



ADDENDUM C – SIMPSON BAY FINISH IS SHOWN IN THE DIAGRAM BELOW.

Courses that finish in Simpson Bay require boats to pass between marks 15p and 15s, leaving mark 15p to port and mark 15s to starboard, as shown in the diagram below, prior to crossing the finish line.



St Maarten Heineken Regatta

Sint Maarten Heineken Regatta Foundation



ADDENDUM D –SCHEDULE OF SEMI-PERMANENT MARKS

The race committee will attempt to set the marks listed below using the stated colors. However, it may be necessary to use a different color if a mark has to be replaced.

MARK	Mark Description	Latitude	Longitude
Start SB	Simpson Bay Start. Orange inflatable shape	18° 1.452'N	63° 6.834'W
Finish	Simpson Bay Finish. Yellow inflatable shape	18° 1.685'N	63° 6.157'W
02	Orange inflatable shape	18° 2,667'N	63° 7.780W
03	Yellow inflatable shape	18° 3,600'N	63° 9.700W
04	Orange inflatable shape	18° 3,700'N	63° 9.450W
05	Yellow inflatable shape.	18° 4,360'N	63° 9.000W
06	Orange inflatable shape	18° 6,800'N	63° 8.900W
07	Orange inflatable shape	18° 4,750'N	63° 7.900W
09	Orange inflatable shape	18° 1,000'N	63° 0.200W
10	Orange inflatable shape	18° 0,400'N	63° 1.700W
12	Orange inflatable shape	18° 1,000'N	63° 7.000W
15p	Orange inflatable shape	18° 1,451'N	63° 6.124W
15s	Yellow inflatable shape	18° 1,497'N	63° 5.996W
18	Yellow inflatable shape	18° 6,618'N	62° 58.425W



St Maarten Heineken Regatta

Sint Maarten Heineken Regatta Foundation



ADDENDUM E – SCHEDULE OF ROCKS, ISLETS, AND ISLANDS OR GROUPS THEREOF



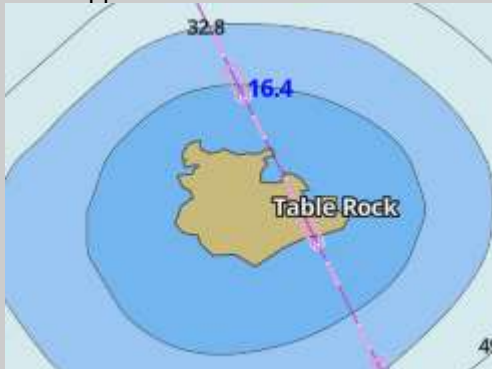
1. Locations and distances, when given are approximate.

MARK	Mark Description	Latitude	Longitude
ML	Marigot Light. West cardinal buoy 0.5nm W of Pointe Arago	18° 5,300'N	63° 5,690'W
IF	<p>Ile Fourchue Rocky island approx. 2 km x 1 km Avoid a shallow area. South east in the bay.</p> 	17° 57,510'N	62° 54,000'W
IL	<p>Ile Tintamarre Island NE of St Martin approx. 2.5 km x 1 km</p> 	18° 7,200'N	62° 58,780'W

St Maarten Heineken Regatta

Sint Maarten Heineken Regatta Foundation

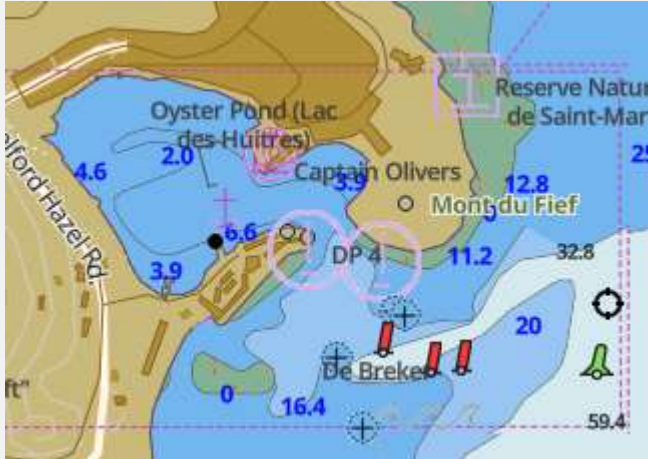


MARK	Mark Description	Latitude	Longitude
BR	<p>Blowing Rock. Rock approx. 125m x 100m</p> 	18° 9,020'N	63° 9,700'W
PR	<p>Pelican Rock Rock approx 250m x 150m</p> 	18° 1,100'N	63° 1,130'W
TR	<p>Table Rock Rock approx 200m x 100m</p> 	17° 58,400'N	62° 55,560'W

St Maarten Heineken Regatta

Sint Maarten Heineken Regatta Foundation



MARK	Mark Description	Latitude	Longitude
OP	<p>Oyster Pond. Green channel marker 0.25nm SE of Oyster Pond.</p> 	18° 3.010'N	63° 0.510'W

St Maarten Heineken Regatta

Sint Maarten Heineken Regatta Foundation



ADDENDUM F – AREAS THAT ARE OBSTRUCTIONS

These lines or areas rank as obstructions, are the limit of safe pilotage and boats shall not cross these lines while racing.

<p>The entire area of Cole Bay between any Yellow cardinal buoy or mark and the shoreline of Cole Bay</p>	<p>The area of Maho Bay (airport) between any Yellow restriction mark and the nearest shoreline.</p>
<p>The area between mark 05, which is to the west of a submerged rock approximately 0.15nm west of Point Plum and the nearest shoreline on Point Plum.</p>	<p>The area between Cow and Calf.</p>

St Maarten Heineken Regatta

Sint Maarten Heineken Regatta Foundation



<p>The area between the Molly Beday West and East.</p>	<p>The area between the Hen and Chickens of the Poulets</p>
<p>The area between Rocher Creole and the nearest shoreline on St Martin.</p>	