

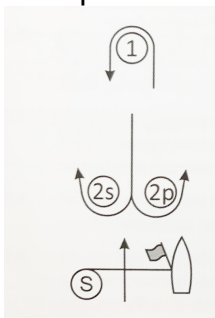
# PINE ORCHARD YACHT & COUNTRY CLUB

## 69th ANNUAL INVITATIONAL RACE

**July 12, 2020**

### SAILING INSTRUCTIONS

1. RULES: The Regatta will be governed by The Racing Rules of Sailing 2017-2020 (RRS).
  - 1.1. Appendix V (Alternative Penalties) is in effect.
2. NOTICE TO COMPETITORS: Notices to competitors will be posted on the official notice board located on the Dock Master's hut at the Pine Orchard dock.
3. CHANGES IN SAILING INSTRUCTIONS: Changes to the sailing instructions will be posted on Yachtscore before 1000 hours on the day of the race.
4. CLASS FLAGS: Class flags/identifiers will be:
  - 4.1. Class                      Numeral Pennant  
    PHRF 1                      #1  
    PHRF 2                      #2  
    PHRF 3                      #3  
    Cruising Canvas          #4
5. SCHEDULE OF RACES:
  - 5.1. The warning signal for the first class is scheduled for 1100 hours.
  - 5.2. The RC may run multiple races for spinnaker classes. An additional race will be signaled by code flag 2nd Substitute flown during the finish of a race and a courtesy announcement on VHF 72.
  - 5.3. Non-Spinnaker classes will only sail one point to point race.
  - 5.4. One race constitutes a series. No score will be excluded.
6. RACING AREA: Rendezvous for starting line will be in the vicinity of Negro Heads buoy R"28". The committee boat will be flying an RC flag.
7. COURSES:
  - 7.1. Courses will be displayed under the class designators on the course board on the Race Committee boat.
  - 7.2. The Race Committee will select windward-leeward courses from the following for the Spinnaker Classes.



Course W – Windward/Leeward	
Signal	Mark Rounding Order
<b>W2</b>	Start – 1 – Finish
<b>W4</b>	Start – 1 – 2s/2p – 1 - Finish

- 7.3.
- 7.4. In the absence of a leeward gate, the 2 mark is to be rounded to port.

7.5. Non-Spinnaker Class course will be designated by series of marks in Section 8 listed in the order to be rounded. Circled Marks are to be rounded to Starboard. Non circled rounded to Port.

8. MARKS: Marks will be orange or yellow inflatable drop marks or Government marks.

B	R "26" Brown's Reef Bell	D	Drop mark, bearing and distance from Race Committee Boat
		M	Special Mark approximately 100 yd. South of N "32" Five Foot Rock
F	Gong "15" Falkner Island	N	N "28" Negro Heads
G	R "10GI" Goose Island Bell	R	N "36" Round Rock"
H	RW "NH" MO(A) New Haven Whistle	S	Start/Finish Mark
K	RG "KR" Kimberly Reef	T	R "10A" Townshend Ledge Bell

9. THE START: Races will be started using rule 26 with classes starting at 5 minute intervals. Numerical class designations does not infer your order of start. The starting sequence will be announced on VHF prior to the warning of each race.

9.1 The starting line will be between a staff displaying a white flag on the Signal Boat and the nearby mark. A standoff buoy may be set off the committee boat. Boats shall not pass between the standoff buoy and the race committee boat.

10. THE FINISH: The finish line will be between a staff displaying a white flag on the race committee boat and the nearby mark S

11. TIME LIMIT: The time limit will be 1630.

11.1 FINISH WINDOW: Boats failing to finish within one hour plus its time allowance after the first boat sails the course and finishes will be scored Did Not Finish. This changes rule 35.

12. PROTESTS: Boats intending to file a protest, shall notify the race committee immediately after finishing.

12.1 Protests shall be written on US Sailing protest forms or forms available from the race committee and delivered there within the Protest Time Limit which is 1 hour after the Signal Boat docks.

13. RADIO COMMUNICATIONS: The race committee will make announcements to the fleet on and will monitor VHF Channel 72.

14. NOTIFICATION OF WITHDRAWAL: Any boat withdrawing from the race shall notify the race committee of their withdrawal by direct hail to the race committee boat or on VHF Channel 72.