



2015 MAY 16-17 & 30-31
ONEDESIGN
REGATTA

Presented by
Quantum Sail Design
Fairfield County Bank
McMichael Yacht Brokers

Organized by Cedar Point Yacht Club, Westport, CT

SAILING INSTRUCTIONS

Hosting the Cedar Point Early Bird Regatta 2015
Hosting the Soverel 33 National Championship 2015
Hosting the J/70 Long Island Sound Championship 2015
Hosting the J/30 Long Island Sound Championship 2015

1. Rules

- 1.1 The regatta will be governed by the "rules" as defined in *The Racing Rules of Sailing*.
- 1.2 J/70s shall apply bow numbers in accordance with posted instructions.
- 1.3 All references herein to "**Opening Weekend**" mean May 16-17, and to "**Concluding Weekend**" mean May 30-31.

2. Notices and Communications to Competitors

- 2.1 Notices to competitors will be posted on the Official Notice Board located in the regatta tent north of the CPYC clubhouse.
- 2.2 Race committee broadcasts will be made over VHF channel 77.
- 2.3 Race committee broadcasts concerning its intentions, the course to be sailed, starting times, course changes, etc. are a courtesy only. Failure of the race committee to make a broadcast, the timing of a broadcast, or the failure of a boat to hear a broadcast will not be grounds for redress. This changes rule 62.

3. Changes to Sailing Instructions

- 3.1 Any change to the sailing instructions will be posted before 0900 on the day it will take effect, except that any change to the schedule of races will be posted by 1900 on the day before it will take effect.
- 3.2 Any posted changes will be indicated by flag L ashore and announced over VHF at 0900, repeated as necessary.

4. Signals Made Ashore

- 4.1 Signals made ashore will be displayed from the CPYC flagpole.
- 4.2 When flag AP is displayed ashore, '1 minute' is replaced with 'not less than 60 minutes' in the race signal AP.

5. Schedule of Races

- 5.1 The number of races for each class will be determined by the race committee.
- 5.2 The first warning signal for the first race is scheduled for 1100 each day.

- 5.3 Flag A displayed from the race committee finish boat at the finish means "No more races today – return to shore".
- 5.4 No warning signal will be made after 1500 on Sundays.

6. Class Flags

Class **Opening Weekend**

J/70
Lightning

Class Flag

J/70 Class Flag
Lightning Class Flag



Concluding Weekend

J/109
Beneteau 36.7
Soverel 33
J/105
J/30

Numeral pennant "1"
Numeral pennant "3"
Numeral pennant "4"
Numeral pennant "5"
Numeral pennant "6"



7. Racing Areas – See Appendix 2

- 7.1 The racing area will be approximately 3 miles southeast of the Clubhouse, approximately one mile southeast of gong G"1". The signal boat will be a 34-foot trawler named "Cedar Point".
- 7.2 For safety, boats should NOT pass between gong G"1" and Cockenoe Island at any time.
Opening Weekend High tides Sat: 1025 Sun 1117
Concluding Weekend High tides Sat: 0946 Sun 1031

8. The Courses

- 8.1 The course for each race will be windward-leeward with a **specified number of legs** (not including the offset leg). All marks shall be left to port. See Appendix I.
- 8.2 The number of legs to be sailed and the approximate magnetic bearing and distance in nautical miles to the first mark will be displayed from the race committee signal boat prior to the warning signal for each race. The race committee will also announce the course over VHF prior to the warning signal for each race.

8.3 Course Example

2	1
4	1
5	4

245 magnetic from starting line to first mark.
One point one mile from starting line to first mark.
Four legs (windward leeward windward leeward to finish).

9. Marks

- 9.1 The starting mark will be a staff with a CPYC burgee on an orange ball.
Mark 1 will be a large orange inflatable.
The offset mark (1a) will be an orange ball.
Marks 2S and 2P will be large green inflatables.
The finish mark will be an orange ball.
- 9.2 For **Opening Weekend**, the starting mark for Lightnings will be an inflatable orange ball, placed to starboard of the CPYC burgee on an orange ball. This mark will have no meaning for the J-70s.
- 9.3 New marks, as provided in instruction 12, will be large yellow inflatables.

10. The Start

- 10.1 Races will be started using Rule 26. The warning for each succeeding class will be made after the preceding start (no rolling starts).
- 10.2 The starting line will be between a staff displaying an orange flag on the signal boat at the starboard end and the course side of the port-end starting mark.
- 10.3 After the first race of the day, classes will start subsequent races as announced on VHF.
- 10.4 Except after a postponement or general recall, the race committee will attempt to alert competitors to upcoming warning signals on VHF.
- 10.5 No boat may start more than 4 minutes after her starting signal.

11. Recalls

- 11.1 As a courtesy to competitors, when an individual recall is signaled, the race committee will attempt to hail over VHF the sail or bow numbers(s) of the boat(s) that are OCS.
- 11.2 When a starting penalty of rule 30 is in effect, the race committee will attempt to hail sail or bow numbers during the minute before the start.
- 11.3 The timing and order of such hails or the failure of a boat to hear the hail will not be grounds for redress. This changes rule 62.

12. Change of the Next Leg of the Course

- 12.1 To change the next leg of the course, the race committee will lay a new mark (or move the finish line) and remove the original mark as soon as practicable. When in a subsequent change a new mark is replaced, it will be replaced by an original mark.
- 12.2 If a new (windward) mark is to be used before a warning signal is made for a class, the race committee signal boat will display flag "C" before the warning signal, and throughout the starting sequence.

13. The Finish

- 13.1 The finishing line will be between a staff displaying a yellow flag on a race committee boat and the course side of the finishing mark.
- 13.2 For courses with an even number of legs (downwind finish), the finishing mark will be on the opposite side of the finish boat from the starting mark.
- 13.3 A leg to the finish may be changed down-current to a finish line established by a race committee boat other than the signal boat. This change will be signaled in accordance with rule 33.

14. Time Limit

- 14.1 The time limit for the first boat to sail the course and finish in each race will be 90 minutes on *Opening Weekend* and 120 minutes on *Concluding Weekend*.
- 14.2 Boats still racing more than 20 minutes after the first boat in their class sails the course and finishes will be scored DNF. This changes rules 35, A4, and A5.

15. Protests and Requests for Redress

- 15.1 Protest forms are available at the race office. Protests shall be delivered there within 60 minutes after the race committee finish boat for the race circle docks. The docking times will be posted on the Official Notice Board. A boat moored at a different harbor may request an extension over VHF to the RC.
- 15.2 Notices will be posted within 15 minutes after the protest time limit to inform competitors of hearings in which they are parties or named as witnesses. Protests will be heard in the approximate order of receipt in the race office as soon as practical.
- 15.3 Penalties for breaking rules other than the rules of Part 2 may be less than disqualification if the protest committee so decides.

16. Scoring

- 16.1 When fewer than 5 races have been completed, a boat's series score will be the total of her race scores.
- 16.2 When at least 5 races have been completed, a boat's series score will be the total of her race scores excluding her worst score.
- 16.3 One race must be completed to constitute a regatta.

17. Safety

- 17.1 Prior to the warning signal for the first race of each day in which it intends to compete, each boat is requested to sail by the signal boat, and check in by hailing its sail number until acknowledged by the race committee.
- 17.2 A boat retiring from a race or leaving the racing area early shall promptly notify the race committee either by hail or over VHF, or by telephone or in person to the CPYC Club Manager at (203) 226-7411.
- 17.3 Government buoy G"1" (Georges Rock) marks a dangerous rock and reef between CPYC and the racing area. Please consult your chart.

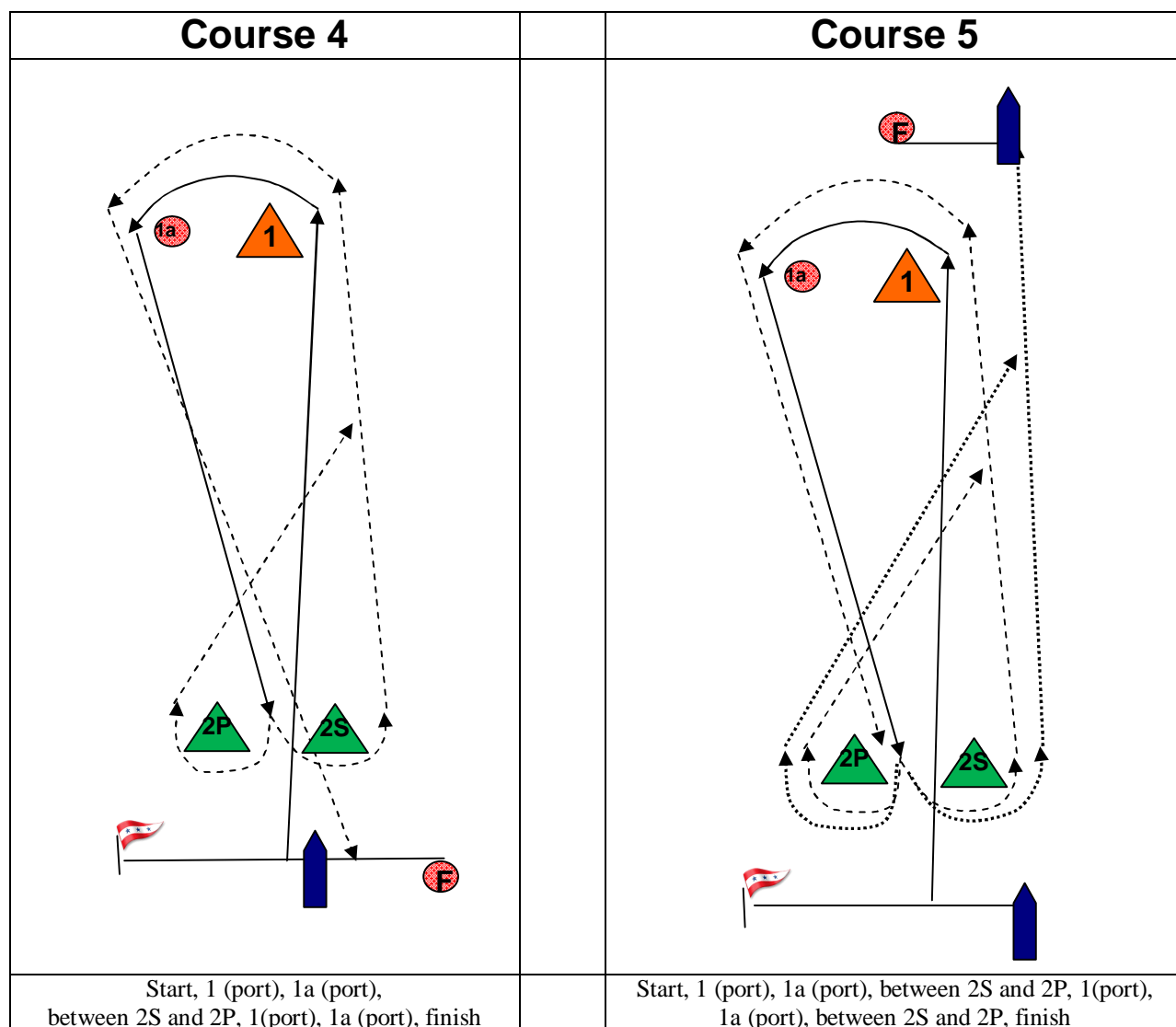
18. Prizes

- 18.1 Prizes will be awarded to the top three finishers in each class. Add'l prizes will be awarded in the J/70 Class.

18.2 The Rex Marine Prize will be awarded to the boat having the best overall performance, as determined by the Organizing Authority.

18.3 The Jim Brigger Sportsmanship Award will be awarded as determined by the Organizing Authority.

Appendix I – Course Diagrams



Courses 3 or 6 may also be used.

NOTE: A leg to the finish may be changed down-current to a finish line established by a race committee boat other than the signal boat. This change will be signaled in accordance with rule 33.

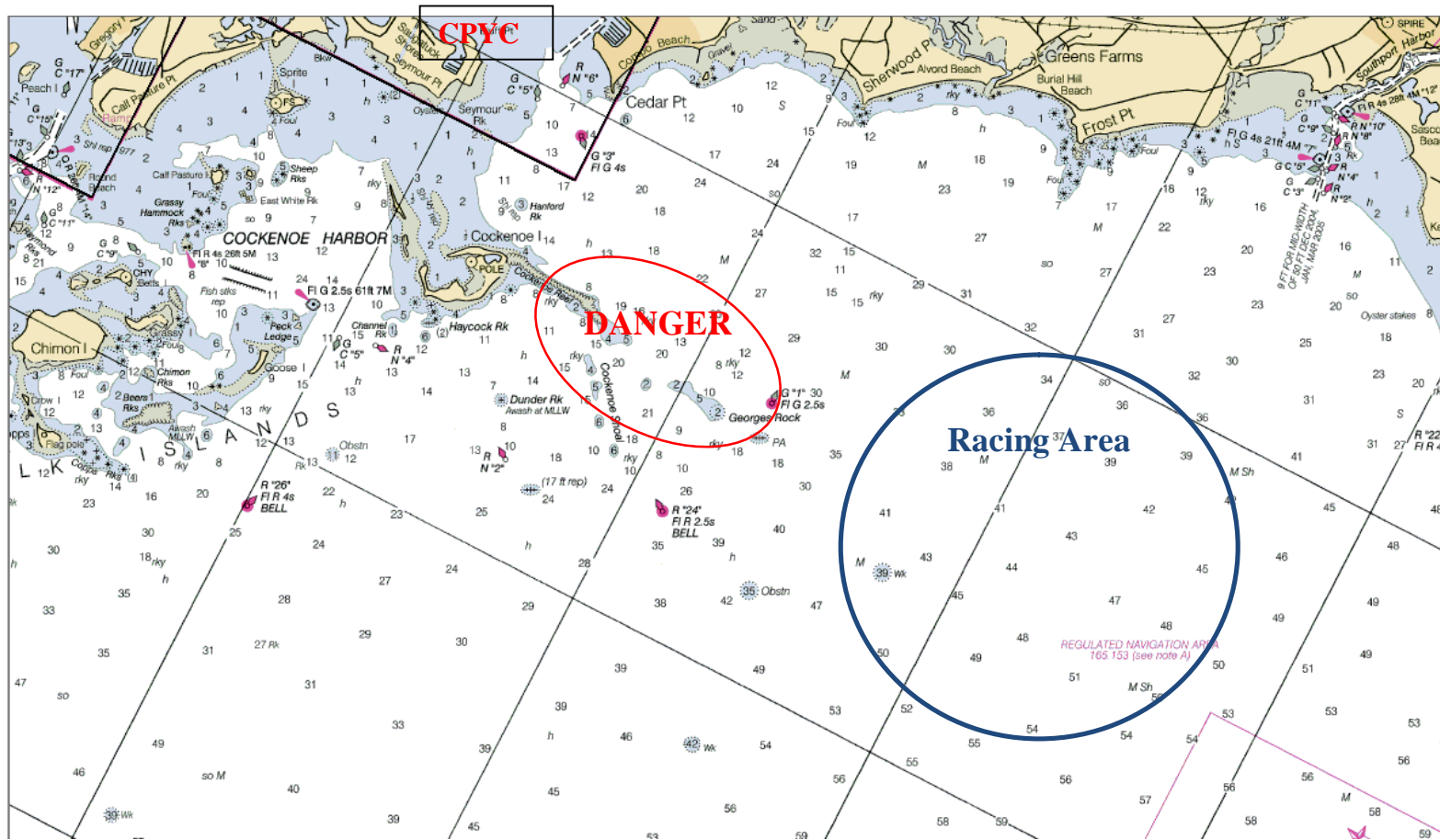
Sponsored by:



and supporting:



Appendix 2 - Racing Areas



Sponsored by:



McMICHAEL
Yacht Brokers and Yards



and supporting:



2015 MAY 16-17 & 30-31
ONEDESIGN
REGATTA

Presented by
Quantum Sail Design
Fairfield County Bank
McMichael Yacht Brokers