



HELLY HANSEN NOOD REGATTA  
San Diego 2015

## Sailing Instructions Amendment #2

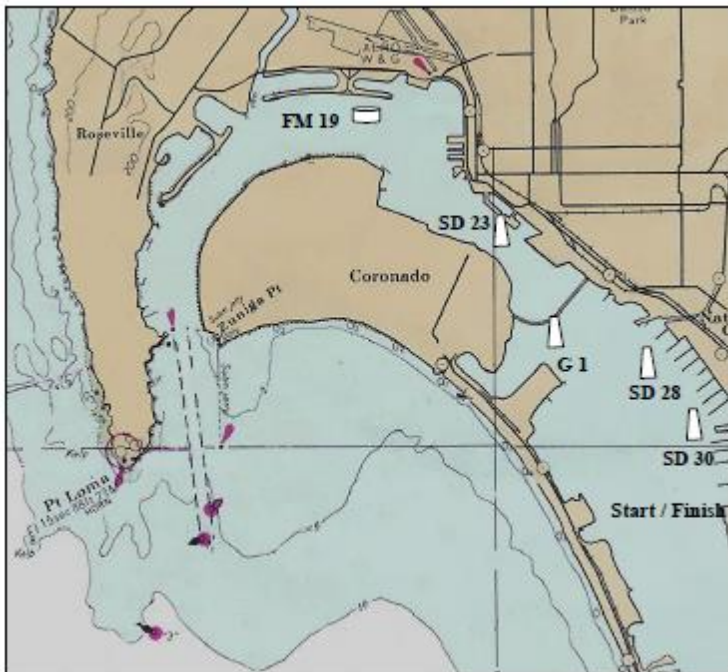
### *For Course C – South Bay only*

Add the following courses:

**Course #7** – (seven legs) This course is a windward, leeward three times around, finish upwind. The marks shall be rounded to port in the order of 1, 2, 1, 2, 1, 2, Finish and will be signaled by numeral placard 7.

**Course #1** - Start, 1 (windward), 2 (leeward), FM 19 to port, (8'+ white steel mooring buoy located near the east end of harbor island), SD "23" to port (located near the entrance to the Marriot Marina), FM 19 to port, finish (at RC signal boat near leeward Mark 2). Approximately 14 miles.

**Course #9** – Start, 1 (windward), 2 (leeward), SD "30" to port, SD "28" to port, G"1" (entrance to Glorietta Bay) to port, SD "30" to starboard, finish (at RC signal boat near leeward Mark 2). Approximately 7 miles.



Sue Reilly  
March 10, 2015  
For the Helly Hansen NOOD Regattas