



EDGARTOWN RACE WEEKEND

'ROUND-THE-SOUND RACE

August 1, 2020

SAILING INSTRUCTIONS

Addendum #1

Course Option #1: Total distance: 20.5 nm

Start line formed by Committee Boat and Green "3" (Edgartown Outer Harbor)

Leave to port, Green "9" (Eldridge Shoal, ~036M, 7.0 nm from G"3")

Leave to port, Green "15" (Western Edge of Bardow Shoal, ~280M, 7.2 nm from G"9")

Finish line formed by leaving Red "2" to starboard on a bearing of 248M within 100 yards (or Committee Boat if on station) (Edgartown Outer Harbor, ~158M, 6.3 nm from G"15")



Course Option #2: Total distance: 19.5 nm

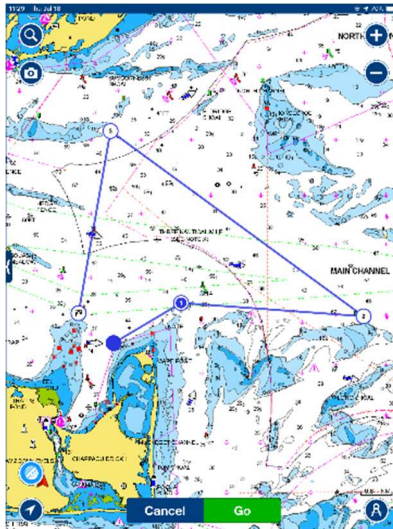
Start line formed by Committee Boat and Green "3" (Edgartown Outer Harbor)

Leave to starboard, Yellow Inflatable Mark at ~41-26.4N 070-26.2W (~073M, 1.9 nm from G"3")

Leave to port, Green "5" (vicinity of Edwards Shoal, ~107M, 4.8 nm from "Yellow inflatable")

Leave to port, Green "11" (Eastern Edge of Bardow Shoal, ~322, 8.0 nm from G"5")

Finish line formed by leaving Red "2" to starboard on a bearing of 294M within 100 yards (or Committee Boat if on station) (Edgartown Outer Harbor, ~204M, 4.8 nm from G"11")



Course Option #3: Total distance: 10.5 nm

Start line formed by Committee Boat and Green "3" (Edgartown Outer Harbor)

Leave to starboard, Yellow Inflatable Mark at ~41-26.4N 070-26.2W. (~073M, 1.9 nm from G"3")

Leave to port, Green "21A" (NE of Cape Poge, ~071M, .9 nm from "Yellow Inflatable")

Leave to port, Red/Green "W" (Squash Meadow, ~296M, 5.2 nm from "21A")

Finish line formed by leaving Red "2" to port on a bearing of 235M within 100 yards (or Committee Boat if on station) (Edgartown Outer Harbor, ~145M, 2.5 nm from RG"W")

