



Melges 32 Miami Spring Challenge

April 4 – 6, 2014

Hosted by Coconut Grove Sailing Club
Event Headquarters at Miami Beach Marina

SAILING INSTRUCTIONS

The Organizing Authority (OA) is the International Melges 32 Class Association (IM32CA).

1. RULES

- 1.1. This regatta will be governed by the rules as defined in *The Racing Rules of Sailing (RRS)*.
- 1.2. The “class rules” for the purposes of the definition of *rules* are the International Melges 32 Class Rules (IM32CR).
- 1.3. International Melges 32 Class Rules (IM32CR) Section H (EVENT RULES) including all subsections (H.1-H.8) shall apply.
- 1.4. Video and/or photographs shall not be used as evidence at protest or request for redress hearings. This changes RRS 63.6.
- 1.5. All boats must carry minimum equipment as required by the US Coast Guard and the IM32CR C.5 PORTABLE EQUIPMENT. .
- 1.6. IM32CR C.1.1 RULES shall apply:
 - RRS 43.1(b) shall not apply.
 - RRS 49.2 is changed in that the lines are hiking lines and tension may be modified.
 - RRS 42.3(c) is modified to allow the spinnaker sheet to be trimmed without restriction.
- 1.7. The ERS Part I – Use of Equipment shall apply.
- 1.8. Only the following US Sailing Prescriptions will apply: rule 67 and rule 76.1.

2. NOTICES TO COMPETITORS

- 2.1. Notices to competitors will be posted on the Official Notice Board located at the Miami Beach Marina (MBM), Regatta Tent south of Pier E.
- 2.2. The Race Committee intends to utilize VHF Channel 73 for the purposes of disseminating pertinent race information (including individual recall identifications). Failure of a boat to receive these communications shall not be grounds for redress. This changes rule 62.1(a).

3. CHANGES TO SAILING INSTRUCTIONS

- 3.1. Any change to the Sailing Instructions will be posted before 0830 on the day it will take effect, except that any change to the schedule of races will be posted by 2000 on the day before it will take effect.

4. SIGNALS MADE ASHORE

- 4.1. Signals made ashore will be displayed on the main flagpole at MBM.
- 4.2. When flag AP is displayed ashore, ‘1 minute’ is replaced with ‘not less than 60 minutes’ in the race signal AP. This changes rule Race Signals.

5. SCHEDULE

5.1. The schedule for the event is as follows:

April 3	PRACTICE DAY
1330	Practice Race(s) (details to follow)
1800	Skippers Meeting (Monty's)
April 4	RACE DAY ONE
1100	Initial Warning Signal
After Racing	Social Activity
April 5	RACE DAY TWO
1100	Initial Warning Signal
After Racing	Social Activity
April 6	RACE DAY THREE
1100	Initial Warning Signal
1430	No initial Warning Signal will be made after this time
After Racing	Awards and social- commencing approximately 1 hour after boats arrive ashore

5.2. Eight (8) Races are scheduled.

5.3. The RC may conduct as many as 3 races each day.

5.4. The OA and/or the RC reserve the right to modify the program due to weather conditions or other causes.

6. CLASS FLAGS

6.1. The Class flag will be the M32 class insignia in blue on a white background or Numeral Pennant #1.

7. RACING AREAS

7.1. The racing area for a given day will be chosen from the locations provided in Attachment A. The Race Committee will post the chosen location on the Official Notice Board and announce via VHF prior to departing the dock.

8. THE COURSES

8.1. No later than the Warning Signal, the Race Committee will display the course, approximate compass bearing, and distance of the first leg. Failure to broadcast or to receive this notification shall not constitute grounds for redress. This changes 62.1(a).

8.2. The information will be arranged vertically.

Example:

4		<i>Course</i>
300		<i>Approximate bearing to Mark 1 (magnetic)</i>
1.5		<i>Approximate distance to Mark 1 (nautical miles)</i>

Course 4: (4 Legs) Start – 1 – 1a – Gate – 1 – 1a – Finish (Downwind)

Course 5: (5 Legs) Start – 1 – 1a – Gate – 1 – 1a – Gate – Finish (Upwind)

8.3. Marks 1 and 1a shall be rounded to port. Mark 1a is an offset mark and will be positioned to port of Mark 1 (looking upwind).

8.4. If only one Gate mark is set, boats shall round the single mark to port.

8.5. Except when there is a change of course, the Gate will be positioned to windward of the RC Signal Boat and may be laid after the starting signal.

8.6. Except for when there is a change of course:

- The finish for course 4 will be to leeward of the Gate
- The finish for course 5 will be in the approximate position of Mark 1.

9. MARKS

9.1. The original marks of the course will be orange inflatable marks.

9.2. In the event of a change of course, change marks will be yellow inflatable marks.

10. THE START

- 10.1. The starting line will be between a staff displaying an orange flag on the Race Committee Signal Boat and a staff displaying an orange flag on a port end Line Boat. In the event that the port end Line Boat is not on station, it will be replaced by a yellow starting mark and the starting line will be between the staff on the Race Committee Signal Boat and the course side of said mark.

11.CHANGE OF THE NEXT LEG OF THE COURSE

- 11.1. To change the next leg of the course, the race committee will lay a new mark (or move the finishing line) and remove the original mark as soon as practicable. When in a subsequent change a new mark is replaced, it will be replaced by an original mark.

12.THE FINISH

- 12.1. For downwind finishes, the finishing line will be on the opposite side of the Race Committee Signal Boat from the starting line. The finishing line will be between a staff displaying an orange flag on a Race Committee Boat and the course side of a nearby yellow inflatable mark.
- 12.2. For windward finishes, the finishing line will be between a staff displaying an orange flag on a Race Committee Boat and the course side of a nearby yellow inflatable mark to port of said Committee Boat.
- 12.3. Flag A displayed, with no sound, while boats are finishing means “no more racing today.”

13.PENALTY SYSTEM

- 13.1. IM32CR H.4.1 (a) shall apply as modified herein:

The first two sentences of rule 44.1 are changed to read as follows: “A boat may take a One-Turn Penalty when she may have broken a rule of Part 2 or rule 31 while racing. However, when she may have broken a rule of Part 2 while in the zone of a rounding or finishing mark, her penalty shall be a Two-Turns Penalty.”

- 13.2. Unless the course is shortened to finish at the windward mark, penalties within 3 boat lengths of the windward mark or on the offset leg may be delayed and taken as soon as possible on the downwind leg.

14.TARGET TIMES AND TIME LIMIT

- 14.1. The target time for each race is between 50 and 70 minutes. Failure to meet the target time shall not be grounds for redress. This changes rule 62.1(a).
- 14.2. The time limit for the first boat to sail the course and finish in accordance with rule 28 shall be 120 minutes. Boats still racing more than 30 minutes after the first boat sails the course and finishes will be scored DNF without a hearing. This changes rules 35 and A5.

15.PROTESTS AND REQUESTS FOR REDRESS

- 15.1. Boats intending to protest are highly encouraged to communicate their intentions with the Race Committee via VHF at the conclusion of the race to which the protest will apply.
- 15.2. Protest forms are available at the regatta tent at MBM. Protests and requests for redress or reopening shall be delivered there within the appropriate time limit.
- 15.3. The protest time limit is 60 minutes after the RC signal boat docks at MBM. The docking time will be posted on the Official Notice Board. Hearings will commence as soon as practicable.
- 15.4. Breaches of instructions 17, 18, 21, and 23 will not be grounds for a protest by a boat. This changes rule 60.1(a). Penalties for these breaches may be less than disqualification if the protest committee so decides. The scoring abbreviation for a discretionary penalty imposed under this instruction will be “DPI.”
- 15.5. On the last scheduled day of racing a request for reopening a hearing shall be delivered:
- Within the protest time limit if the requesting party was informed of the decision on the previous day and;
 - No later than 30 minutes after the requesting party was informed of the decision on that day. This changes rule 66.
- 15.6. On the last scheduled day of racing a request for redress based on a protest committee decision shall be delivered no later than 30 minutes after the decision was posted. This changes rule 62.2.
- 15.7. In the case of a protest, the representative from each yacht that attends the protest in the protest room shall be the owner or the Group 1 driver. Group 3 sailors from the boat protesting or the boat being protested are not allowed in the protest room or to be in contact with the representative in the protest room. Group 3 sailors from other boats may be allowed in the protest room as a witness.
- 15.8. The Race Committee will post a list of boats that have been given starting penalties or other Race Committee Actions. If this list is posted prior to the filing deadline, requests for redress based on this posting shall be filed no later than 30 minutes after the protest time limit. This changes rule 62.2.

16.SCORING

- 16.1. The Low Point Scoring System of RRS Appendix A will apply, with the following modifications:
- Three races are required to be completed to constitute a series.

- When fewer than six races have been completed, a boat's series score will be the total of her race scores.
- When six or more races have been completed, a boat's series score will be the total of her race scores excluding her worst score.

This changes rule A2.

17.SAFETY REGULATIONS

17.1. A boat that retires from a race or leaves the racing area between races shall notify the Race Committee as soon as practicable.

18.REPLACEMENT OF CREW OR EQUIPMENT

- 18.1. Substitution of competitors will not be allowed without the prior written approval of the OA for the race to which it applies.
- 18.2. Substitution of damaged or lost equipment will not be allowed unless authorized by the OA. Requests for substitution shall be made at the first reasonable opportunity.

19.EQUIPMENT AND MEASUREMENT CHECKS

19.1. A boat or equipment may be inspected at any time for compliance with the class rules and Sailing Instructions.

20.SUPPORT BOATS

20.1. Restrictions on Support Boats shall apply as described in International Melges 32 Class Rule H.5 OUTSIDE ASSISTANCE.

21.PRIZES

- 21.1. Prizes for winning helmsman and each crew member for the top three boats overall.
- 21.2. Daily Prizes for the winner of each race will be presented.
- 21.3. Additional Prizes may be awarded at the discretion of the RC and OA.
- 21.4. A prize will be awarded to the best boat that has an all Corinthian crew.

22.CAMERAS & ELECTRONIC EQUIPMENT

22.1. Boats may be required to carry cameras, sound equipment or positioning equipment as provided and specified by the organizing authority.

23.COMPETITOR CONDUCT

23.1. All owners are responsible for their crew's conduct and shall at all times exemplify the MELGES 32 CLASS MISSION STATEMENT and CODE OF CONDUCT. Failure to do so may be grounds for disqualification.

24.WIND SPEEDS

24.1. Races will not be started when the race committee deems that winds are consistently at or above 25 knots or gusting to 28 knots and above. If a race has been started and the wind increases to 25 knots and above, it remains at the discretion of the race committee whether or not to abandon the race. Races will not be started unless winds are consistently above 5 knots at the time of the start.

25.FURTHER INFORMATION

25.1. For further information please contact:

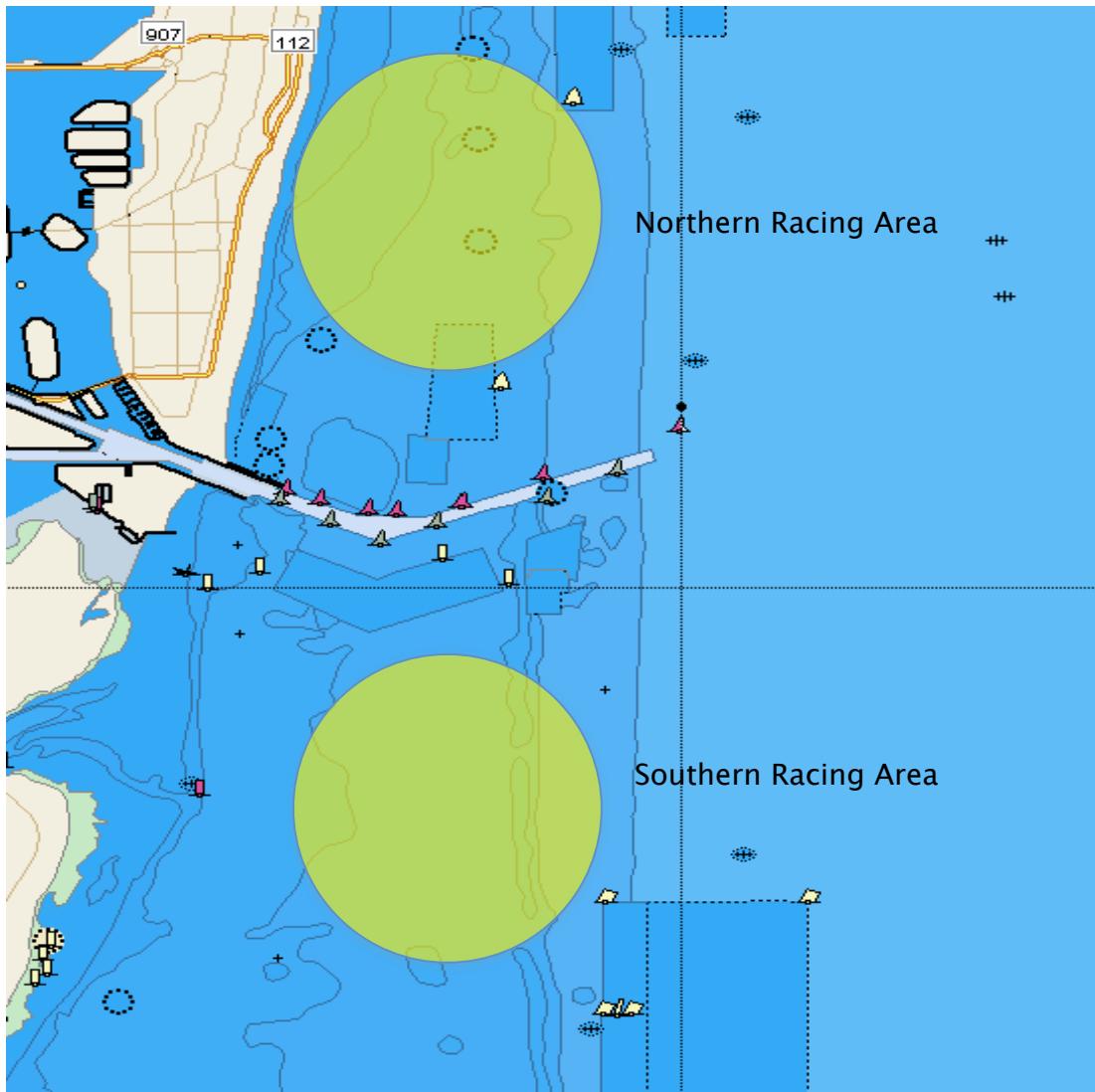
Joy Dunigan- International Class Administrator // +1.912.398.5776 // classadmin@melges32.com

Anderson Reggio- Principal Race Officer // +1.267.304.1873 // andersonreggio@gmail.com

Ron Rostorfer- Coconut Grove Sailing Club Regatta Chair

ATTACHMENT A

VENUE- Racing Areas



Not to be used for navigation