



INTERNATIONAL ROLEX REGATTA 2011



SAILING INSTRUCTIONS AND APPENDIX A

St. Thomas, U.S. Virgin Islands

March 25 - 27, 2011





► **SAILING INSTRUCTIONS**

► **1 - RULES**

1.1 - The regatta will be governed by:

- a. The rules, as defined in The Racing Rules of Sailing (RRS) 2009 - 2012.
- b. ISAF Offshore Special Regulations Appendix J, Category 5 Special Regulation for Inshore Races.
- c. The Caribbean Sailing Association (CSA) Rating Rule. Crew limitations for CSA classes will be in accordance with the CSA Rating Rule. CSA Rating information can be found at www.caribbean-sailing.com.
- d. The 2011 IRC Rule Parts A, B & C

- i. The maximum total crew shall not exceed the Crew Number printed on the boat's certificate, plus one. The maximum total crew weight shall not exceed the product of the Crew Number printed on the boat's certificate, plus one, multiplied by 85KG. This changes IRC Rule 22.4.

- ii. IRC Rules 21.1.5 (d) and (f) are amended as follows:

During the regatta the spinnakers carried may vary from day to day, but shall remain the same for each individual race day, including days with multiple races and in the case of damage to sails. Competitors may change spinnakers on consecutive days provided all such sails are within the dimensions declared on the boat's IRC certificate.

- e. The decisions of the Multihull Advisory Committee for multihull classes.

- f. The Portsmouth Yardstick for Beach Cats.

1.2 - For all classes, the minimum number of crew shall be four, except for Beach Cats where the minimum number of crew shall be two.

1.3 - Minimum safety requirements are found in Appendix A of the Notice of Race.

1.4 - Every crew member is required to sign and

every boat shall file, the Disclaimer and Waiver of Media Rights form provided at registration.

► **2 - BOAT IDENTIFICATION**

2.1 - The organizing authority may assign bow numbers to designated classes. The numbers will be available at registration. Bow numbers shall be affixed to both the port and starboard sides in the following manner: the leading edge of the forward number shall be 20 inches aft of the bow stem and 3 inches below the deck. The leading edge of the aft number shall be 3 inches aft of the forward number and 3 inches below the deck. All bow numbers shall be on a contrasting background.

2.2 - Event stickers and "Rolex" flags will be supplied and shall be displayed during the Regatta. The "Rolex" flags shall be prominently displayed from the backstay or near the stern of the boat approximately 7 feet above the deck at all times while racing. Beach Cats and Cruising Class boats are not required to carry "Rolex" stickers. The "Rolex" stickers shall be approximately 10 inches aft of the bow numbers and 6 inches below the deck. Boats failing to display event stickers, "Rolex" flags or bow numbers are subject to protest by the Race Committee only. This changes RRS 60.1.

► **3 - NOTICES TO COMPETITORS**

Notices to the competitors will be posted on the Official Notice Board located at St. Thomas Yacht Club, Cowpet Bay.

► **4 - CHANGES TO SAILING INSTRUCTIONS**

4.1 - Any change to the Sailing Instructions will be posted before 0800 on the Official Notice Board on the day it will take effect, except that any change to the schedule of races will be posted by 1800 on the day before it will take effect.

4.2 - Changes to the Sailing Instructions may be

given orally on the water. [RRS 90.2 (c)] In the event of oral instructions the Signal Boat will display code flag Lima and give instructions as boats come within hail of the Signal Boat, in addition the Race Committee will broadcast the instructions and intentions of the Race Committee on the designated VHF channel.

► **5 - SIGNALS MADE ASHORE**

5.1 - Signals made ashore will be displayed on the flagpole at St. Thomas Yacht Club.

5.2 - When flag AP is displayed ashore, no warning signal will be made less than 60 minutes after the AP is lowered. This changes Race Signals.

► **6 - SCHEDULE OF RACES**

6.1 - Races are scheduled on March 25, 26 & 27, 2011.

6.2 - Classes sailing in each of the race areas will be posted on the Official Notice Board(s) by 1800hr Thursday March 24, 2011.

6.3 - The scheduled time for the first warning signal for each race day is 1000hr.

6.4 - Courses to be sailed each day will be posted on the Signal Boat for their respective class.

6.5 - Day 1, Friday March 25 – All classes are scheduled to sail up to 3 races.

Race 1 will start from Cow & Calf starting area and finish in Charlotte Amalie Harbor.

Race 2 will start in Charlotte Amalie Harbor. For some classes Race 2 will finish in Cowpet Bay. For some classes Race 2 will finish north-west of Packet Rock Buoy RN"2".

Classes finishing Race 2 at Packet Rock shall start Race 3 at Packet Rock and finish in Cowpet Bay.

6.6 - Day 2, Saturday March 26 – For IC24's and other one-design classes, as many as 8 W/L races are planned in the vicinity of Great Bay, Jersey Bay or St. James Circle.

Cruising Class(es) & Multihulls will sail one of the Buck Island Courses.

All other classes will sail a combination of St.

James, Dog Island and/or distance race courses on the south side of St. John.

6.7 - **Day 3, Sunday March 27** – Races for all classes except IC24s and other one-design classes will start from the Cow & Calf Starting area. Two races are planned for non-IC24 classes. These classes will sail a combination of St. James, Dog Is. and Pillsbury Sound courses. For one-design classes, as many as 6 W/L races are planned in Jersey Bay.

► **7 - CLASS FLAGS**

7.1 - Class flags will be designated and will be distributed by the Race Committee during the skipper's meeting Thursday, March 25.

7.2 - Class flags shall be conspicuously displayed from the backstay, or for boats without a backstay, near the stern of the boat, at all times while racing.

► **8 - THE COURSES**

8.1 - Course descriptions are included in Appendix A of these sailing instructions.

8.2 - Course graphics are not a substitute for navigational aids, all distances and mark locations are approximate. Competitors assume responsibility for identifying and avoiding navigational hazards.

8.3 - Course designations will be displayed or announced via VHF by the Race Committee Signal Boat no later than the warning signal for each class.

8.4 - When there is a gate, boats shall sail between the gate marks from the direction of the previous mark and round either gate mark.

► **9 - MARKS**

9.1 - Marks on distance courses shall be a combination of inflatable marks, government buoys or Islands.

9.2 - Marks on W/L courses shall be inflatable marks.

9.3 - Change marks will either be a different color from original mark or have black band.

9.4 - The Race Committee Signal Boat may be protected by a nearby inflatable limit mark, which shall rank as a starting mark. Boats shall not pass between a limit mark and the nearby committee boat when approaching the line to start. The area between the limit mark and the committee boat does not rank as an obstruction for the purposes of RRS 19 and 20.

► **10 - THE START**

10.1 - Races will be started in accordance with RRS 26, except that IC-24 & other one-design classes may use the Sound-Signal Starting System described in Appendix A.

10.2 - The starting line will be between a staff displaying an orange flag on the Race Committee Signal Boat and the course side of a nearby inflatable mark.

10.3 - A boat whose warning signal has not been made shall avoid the starting area.

10.4 - No boats shall attempt to start later than 5 minutes after her starting signal. All entered boats not starting within 5 minutes of her starting signal shall be scored Did Not Start (DNS).

10.5 - In the event of an Individual Recall the Race Committee will attempt to notify boat(s) via designated VHF channel by indication of her bow number, sail number or other method available. Failure of the Race Committee to make such broadcasts, the timing and order of such hails, or the length of time it takes to make a notification on the VHF will not be grounds for redress. (This changes RRS 29.1 and 62.1 (a)).

► **11 - CHANGE OF THE NEXT LEG OF THE COURSE**

A change of course after the start will be signaled before the leading boat has begun the leg. Any marks to be rounded after rounding the changed mark may be relocated to maintain the original course configuration. When in a subsequent

change a change mark is replaced, it may be replaced by an original mark.

► **12 - THE FINISH**

The finishing line will be between a staff displaying a blue flag on a Race Committee Signal Boat and a nearby inflatable mark.

► **13 - PENALTIES FOR BREAKING A RULE OF PART 2**

13.1 - A boat that may have broken a rule of Part 2 while racing may take a penalty at the time of the incident. The penalty may be either a one turn penalty in accordance with RRS 44.2 or a scoring penalty in accordance with RRS 44.3. Her penalty may be either pursuant to RRS 44.2 or RRS 44.3.

Two-turns Penalty RRS 44.2 is changed such that the penalty shall be one turn including one tack and one jibe that in all other respects complies with RRS 44.2. The Scoring Penalty RRS 44.3 shall not be fewer than two (2) places. All boats that have taken a Scoring Penalty in compliance with RRS 44.3 shall submit a written declaration on a form available at the Protest Desk. Submitting a written declaration within the protest time shall satisfy the requirement in RRS 44.3(a) to inform the Race Committee at the finish line. This changes rule 44.3.

13.2 - The jury may impose suitable penalties, other than disqualification for breaches of non-Part 2 rules. This changes RRS 64.1.

► **14 - TIME LIMITS**

14.1 - Racing Day Sunday, the time limit will be four hours (4.0 hours).

14.2 - For any boat still racing, the race committee may finish her 'in place' subject to maintaining her relative score should she have otherwise completed the race. This changes 28.1

Continued on Next Page

► **15 - PROTESTS, ARBITRATION AND REQUESTS FOR REDRESS**

15.1 - Protest forms are available at the Protest Desk at St. Thomas Yacht Club. Protests shall be delivered in writing within the protest time limit. The protest time will be posted at the Protest Desk. The Protest room is located adjacent to the St. Thomas Yacht Club tennis courts.

15.2 - For each class the protest time limit is 60 minutes after its respective Race Committee Signal Boat reaches its dock or mooring.

15.3 - Protests will be heard as soon as possible after each day's racing. Protest notices will be posted and heard in the approximate order of receipt. Failure of a party to appear at a protest hearing held after the expiry of the protest filing time following the posting of protest notification will be considered as grounds for the Jury to proceed under RRS 63.3 (b).

15.4 - Any measurement disputes shall be filed with the International Jury by the end of Protest time on Race Day #1.

15.5 - For protests involving a breach of Part 2 of the RRS, an arbitration hearing will be offered prior to an International Jury hearing. No witnesses will be allowed. Unresolved arbitration will be forwarded to the International Jury.

This changes Part 5, Section B.

15.6 - A party who accepts the arbitrator's opinion that they broke a rule of Part 2 will be assessed a 40% scoring penalty as computed by RRS 44.3 (c), but not fewer than four places.

15.7 - For the purpose of RRS N1.4 (b) the time limit for a hearing by the jury composed in compliance with RRS N1.1, N1.2, and N1.3 is within one hour after the decision is announced.

15.8 - Decisions of the International Jury will be final as provided in rule 70.5.

► **16 - SCORING**

16.1 - A boat's series score shall be the sum of all of her race scores, without a discard. This changes Appendix A2.

► **17 - SAFETY REGULATIONS AND CHECK IN**

17.1 - All boats shall carry VHF radios capable of receiving communications from the Race Committee.

17.2 - Each boat shall check in with their Race Committee Signal Boat before the first warning signal of the day by sailing on a starboard tack past the stern of the Signal Boat and being acknowledged. Failure to check in with the Race Committee is subject to protest only by the Race Committee. This changes RRS 60.1 and 60.3.

17.3 - A boat that retires from a race shall notify the Race Committee as soon as possible.

17.4 - A boat or equipment may be inspected at any time for compliance with the safety requirements posted in the notice of regatta.

► **18 - RADIO COMMUNICATION**

The Race Committee will broadcast information available to all competitors as shown below.

18.1 - IC24 exclusive courses shall be designated VHF channel 71

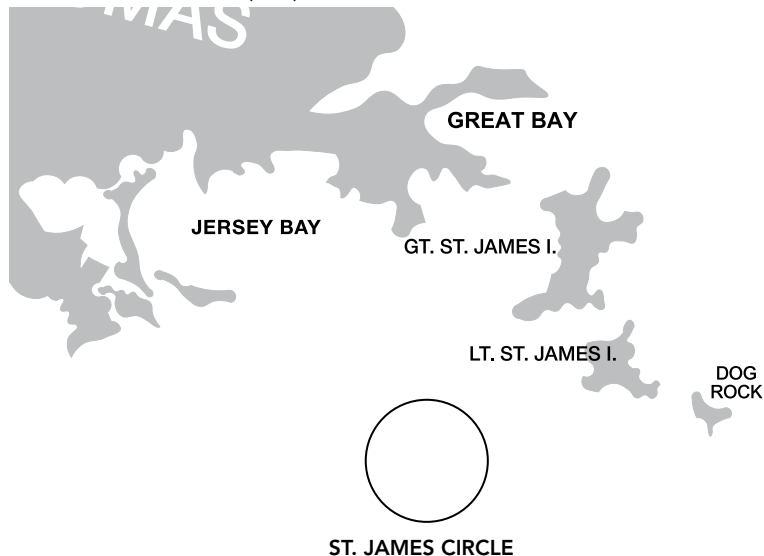
18.2 - All other courses shall be designated VHF channel 72

► **19 - PRIZES**

Prizes will be awarded at St. Thomas Yacht Club following the racing on Sunday, March 27, 2011.

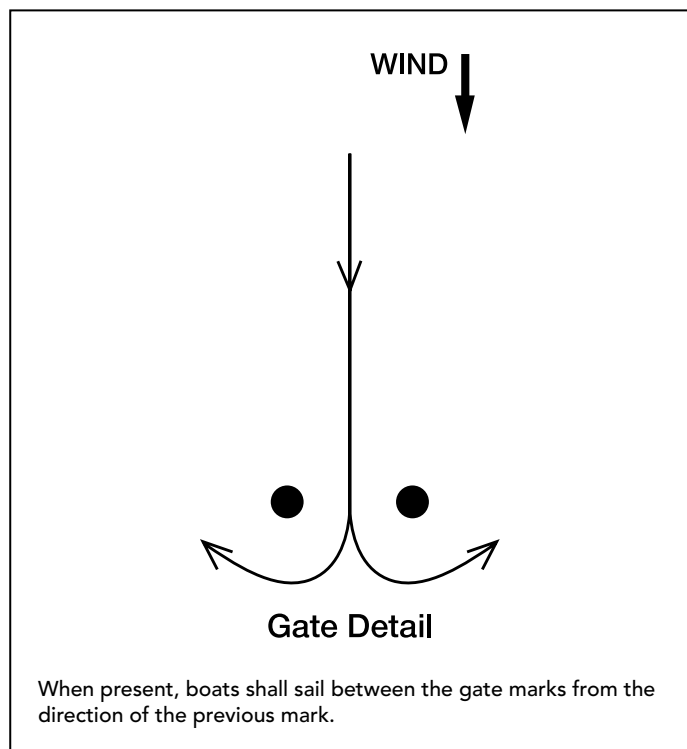
APPENDIX A

► WINDWARD/LEEWARD (W/L) COURSE DIAGRAMS



- Course WL 2: Start, mark 1, offset, Finish
- Course WL 2A: Start, mark 1A, offset, Finish
- Course WL 4: Start, mark 1, offset, Gate, mark 1, offset, Finish
- Course WL 4A: Start, mark 1A, offset, Gate, mark 1A, offset, Finish
- Course WL 6: Start, mark 1, offset, Gate, mark 1, offset, Gate, mark 1, offset, Finish
- Course WL 6A: Start, mark 1A, offset, Gate, mark 1A, offset, Gate, mark 1A, offset, Finish

- The RANGE BEARING, and MARK DESIGNATION to the appropriate weather mark will be displayed from the Race Committee Signal Boat and/or announced on VHF.



The location for W/L Course will be displayed on the Regatta Notice Board no later than 1800 on the evening before the notice applies.

W/L Courses may, at the discretion of the PRO, use the Sound Signal Start System. This changes Rule 26. The Sound Signal Start System may be used for Packet Rock & one-design classes.

SOUND-SIGNAL STARTING SYSTEM

1. Course and postponement signals may be made orally.
2. Audible signals shall govern, even when supplemental visual signals are also used.
3. The starting sequence shall consist of the following sound signals made at the indicated times:

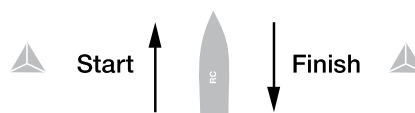
Signal	Sound	Time before start
Warning	3 long	3 minutes
Preparatory	2 long	2 minutes
	1 long, 3 short	1 minute, 30 seconds
	1 long	1 minute
	3 short	30 seconds
	2 short	20 seconds
	1 short	10 seconds
	1 short	5 seconds
	1 short	4 seconds
	1 short	3 seconds
	1 short	2 seconds
	1 short	1 second
Starting	1 long	0

4. Signals shall be timed from their commencement.
5. A series of short signals may be made before the sequence begins in order to attract attention.
6. Individual recalls shall be signalled by the hail of the sail number (or some other clearly distinguishing feature) of each recalled boat. Flag X need not be displayed.
7. Failure of a competitor to hear an adequate course, postponement, starting sequence or recall signal shall not be grounds for redress.

Offset ● ● Mark 1A

Offset ● ● Mark 1

Gate ● ●



► **COURSE MARKS**

(All mark positions and distances are approximate)

MARK NAME	LATITUDE	LONGITUDE	MARK NAME	LATITUDE	LONGITUDE
Coculus Mark	18.17.72° N	64.54.43° W	Yacht Haven Grande Mark (YHG)	Will be located east of the finish line in Charlotte Amalie Harbor	
Stragglers Mark	18.18.10° N	64.50.40° W	Weather Mark	For course EH-1 will be approximately 3.0nm to windward of Coculus Mark	
Yeoman Mark	18. 18.15° N	64. 49.2° W	Leeward Mark	For courses D-4, and SJ-2 will be approximately 0.3nm to windward of the Start/Finish Line	
Dog Rock Mark	18. 17.63° N	64. 48.6° W	Reef Bay North Mark (RBN)	18. 19.10	64. 45.0
Turtle Rock Mark	18.21.15° N	64.51.21° W	Reef Bay South Mark (RBS)	18.17.80	64. 45.0
Maria Bluff Mark	18.18.71° N	64.47.73° W			
Shark Island	18.20.40° N	64.50.34° W			
Flamingo Mark	Flamingo mark should be set approx. 1.5 nm to leeward of WR1. See NH-1, NH-2, NC-1.				

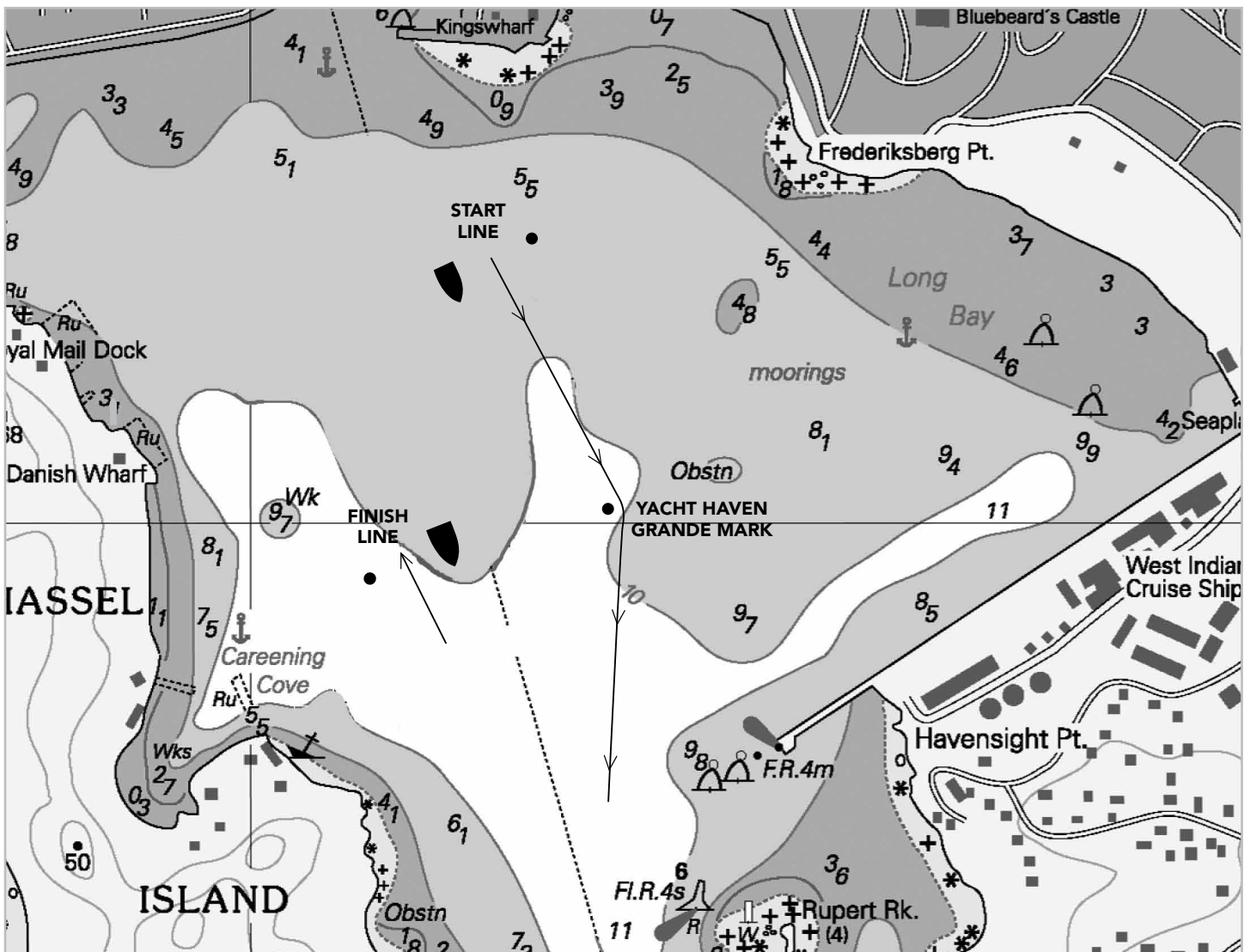
NOTE: In all course diagrams, "Mark" indicates an inflatable Rolex tetrahedron; Mark names do not appear on the inflatable. "Buoy" refers to a government buoy. Consult a navigational chart for their latitude/longitude.

START LINE: Start between the staff displaying an orange flag on the Race Committee Signal Boat and nearby inflatable mark. Cow and Calf starting area will be .05 -1.0 nm south of Cow and Calf Rocks.

FINISH LINE: Proceed to finish between the staff displaying a blue flag on the Starboard Side of the Race Committee Signal Boat and a nearby inflatable mark.

NOTE: Boats not Starting or Finishing a race shall not cross the start-finish line.

► **CHARLOTTE AMALIE HARBOR DETAIL -** Locations are approximate and are subject to adjustments as required for weather, obstructions, etc.



► **SH-1 South Harbor Course 1 (16 nm)**

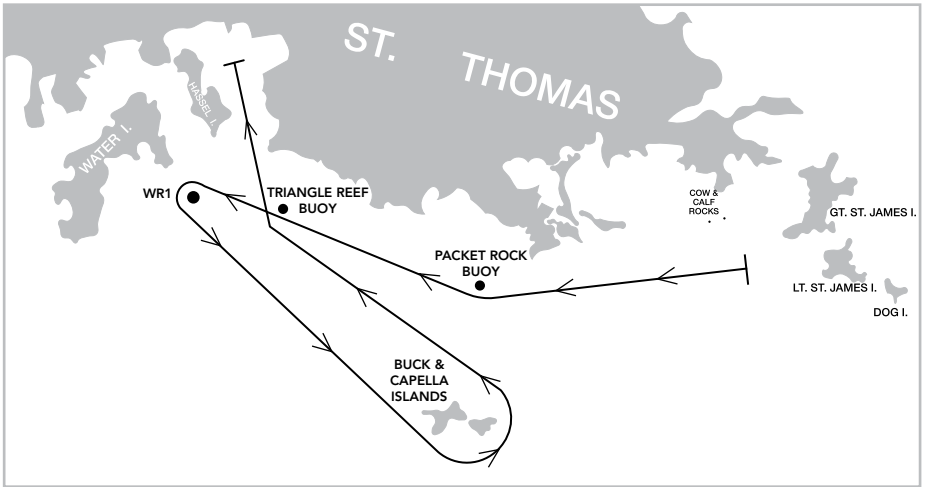
Cow & Calf starting area.

From the start proceed to Packet Rock and Triangle Reef buoys, leaving both to Starboard.

Proceed to WR1 buoy, leaving it to Port.

Proceed to Buck & Capella Islands, leaving both to Port.

Leaving Triangle Reef buoy and Packet Rock buoy to Starboard, proceed to the finish in Charlotte Amalie Harbor.



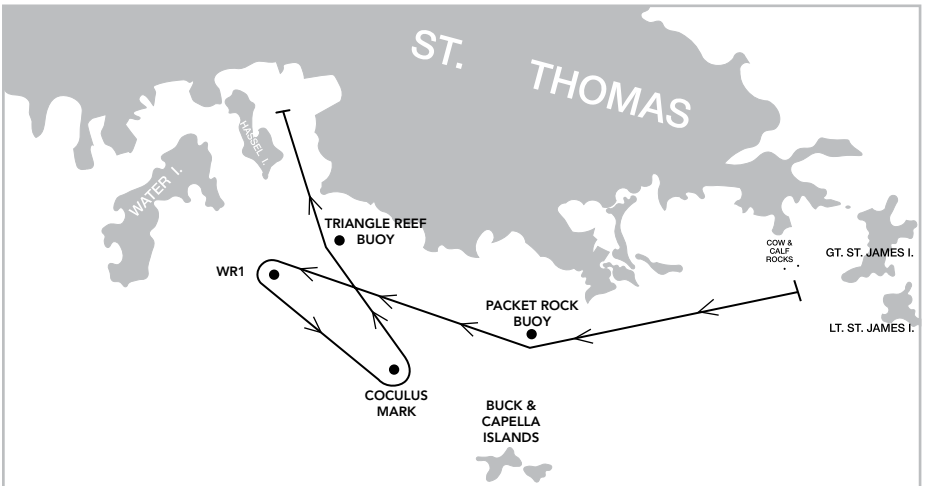
► **SH-2 South Harbor Course 2 (11nm)**

Cow & Calf starting area.

From the start, leave Packet Rock and Triangle Reef buoys to starboard, proceed to WR1 buoy leaving it to Port.

Proceed to Coculus Mark leaving it to Port.

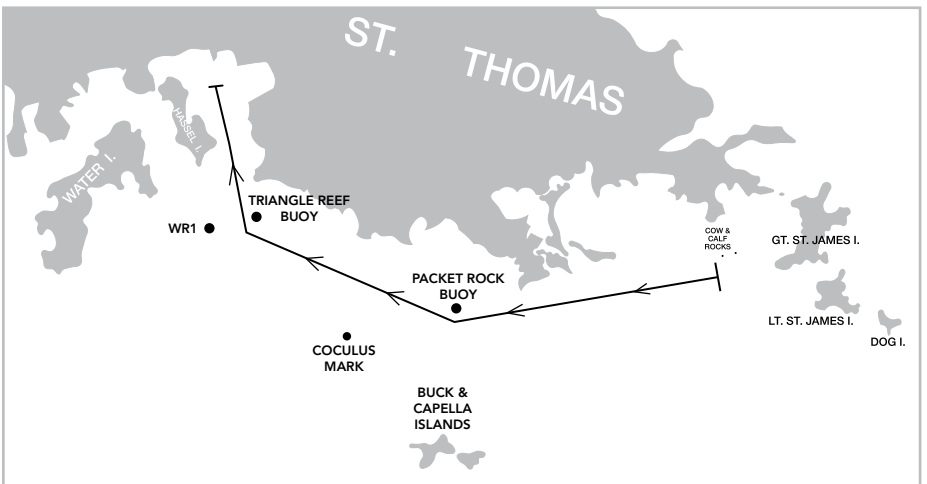
Leaving Triangle Reef buoy to Starboard, proceed to finish in Charlotte Amalie Harbor.



► **SH-3 South Harbor Course 3 (6nm)**

Cow & Calf starting area.

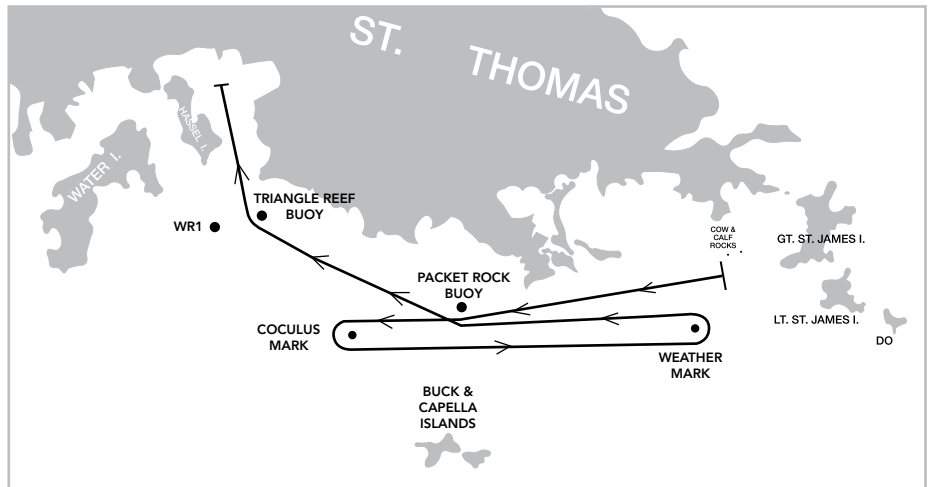
From the start, Leave Packet Rock buoy and Triangle Reef buoy to Starboard, proceed to finish in Charlotte Amalie Harbor.



► **EH-1 East Harbor Course 1 (14nm)**

Cow & Calf starting area.

From start, leaving Packet Rock Buoy to starboard, proceed to Cocolus Mark, leaving it to Port. Proceed to Weather Mark, leaving it to port. Leaving Packet Rock Buoy and Triangle Reef Buoy to starboard, proceed to finish in Charlotte Amalie Harbor.

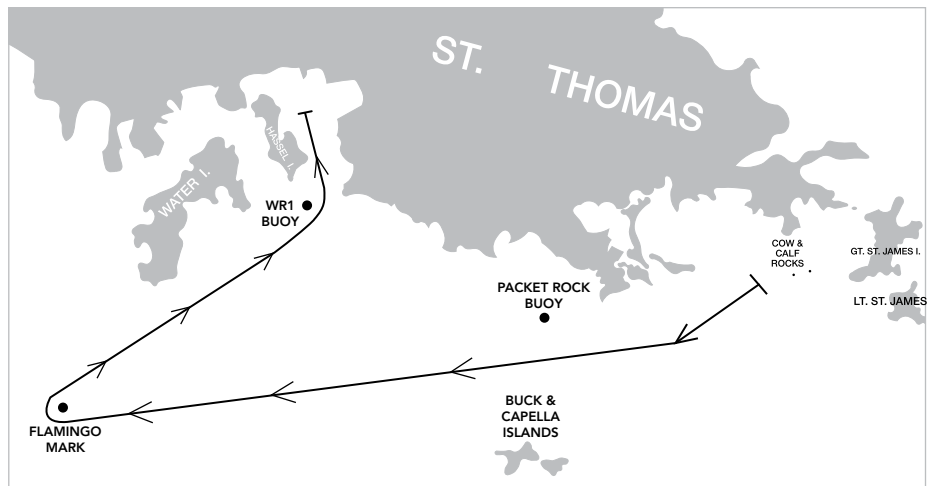


► **NH-1 North Harbor Course 1 (11nm)**

Cow & Calf starting area.

From the start leave Packet Rock buoy to Starboard, proceed to Flamingo Mark leaving it to Starboard.

Leaving WR1 buoy to Port, proceed to finish in Charlotte Amalie Harbor.



► **NH-2 North Harbor Course 2 (16 nm)**

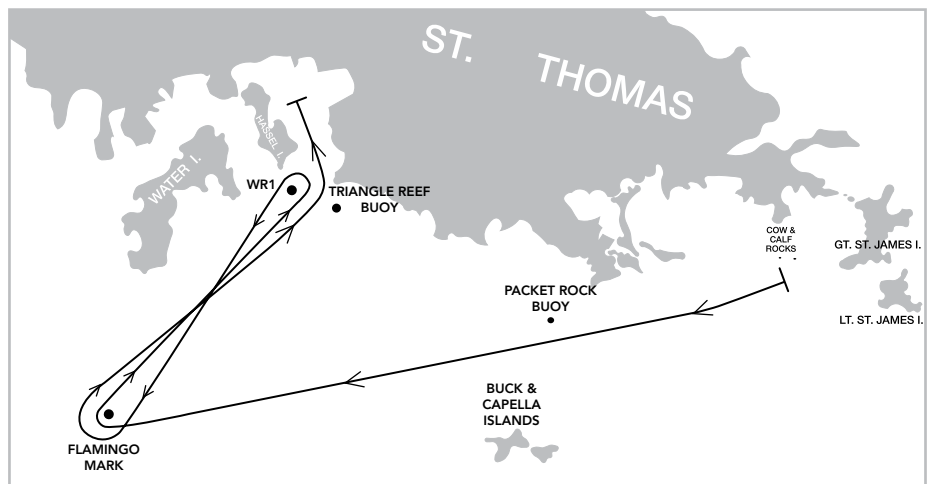
Cow & Calf starting area.

From the start leave Packet Rock buoy to Starboard, proceed to Flamingo buoy leaving it to Starboard.

Proceed to WR1 buoy, leaving it to Port.

Proceed to Flamingo Mark, leaving it to Starboard.

Leaving WR1 buoy to Port, proceed to finish in Charlotte Amalie Harbor.

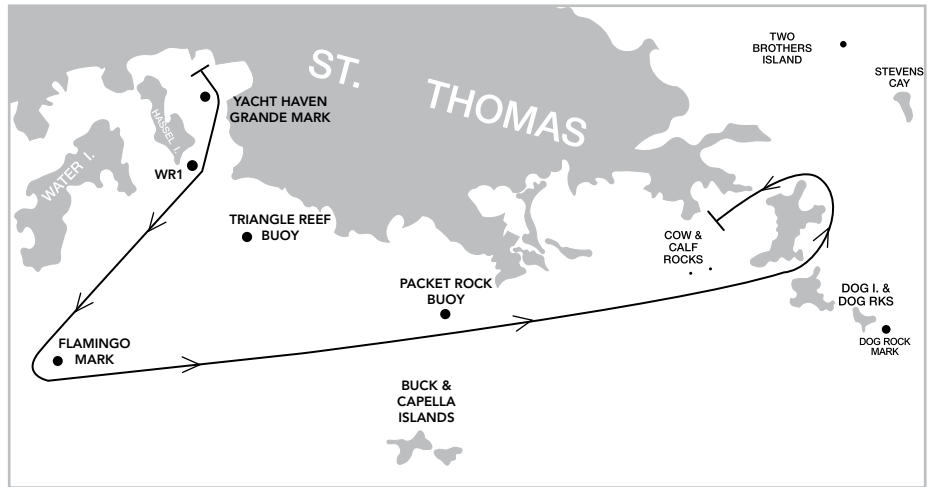


► **NC-1 North Cowpet Course 1 (13 nm)**

Charlotte Amalie Harbor starting area

From the start proceed to YHG Mark leaving it to Starboard. Leave WR1 to Starboard. Proceed to Flamingo Mark, leaving it to Port. Leaving Triangle Reef buoy and Packet Rock buoy to Port, proceed thru St. James Cut. Leaving Great St. James Island to Port, proceed thru Current Cut leaving Current Cut Rock to Starboard.

Proceed to finish in Cowpet Bay.



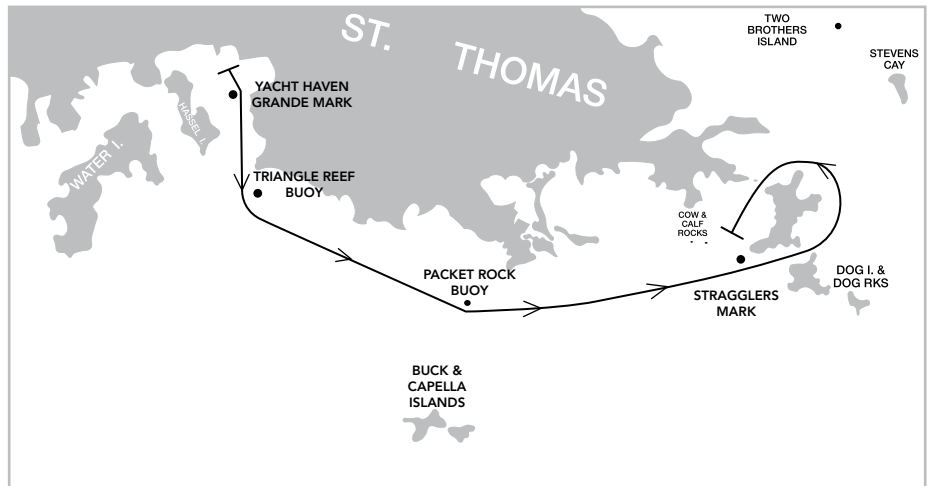
► **NC-2 North Cowpet Course 2 (9 nm)**

Charlotte Amalie Harbor starting area

From the start proceed to YHG Mark leaving it to Starboard. Leaving Triangle Reef and Packet Rock Buoys to Port, and Stragglers Mark to Port proceed thru St. James Cut.

Leaving Great St. James Island to Port, proceed thru Current Cut leaving Current Cut Rock to Starboard.

Proceed to finish in Cowpet Bay.



► **EC-1 East Cowpet Course 1 (13 nm)**

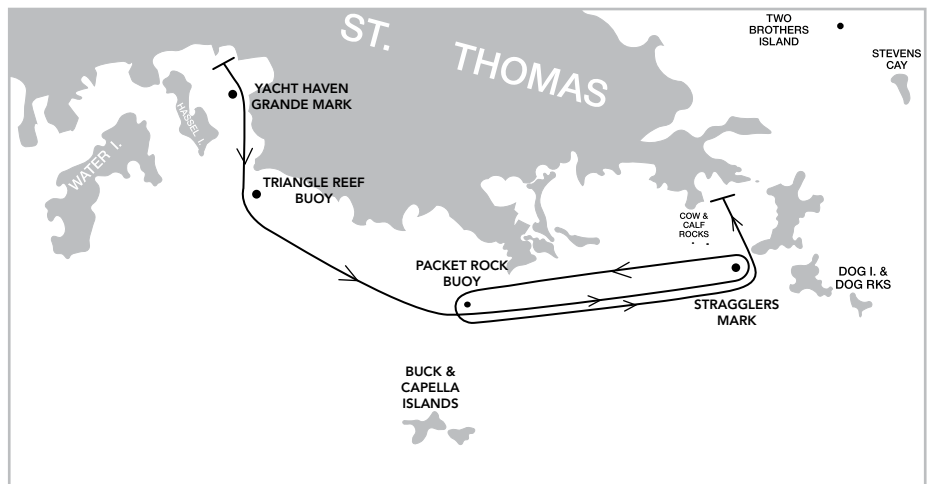
Charlotte Amalie Harbor starting area.

From the Start proceed to Yacht Haven Grande mark, leaving it to Starboard.

Leaving Triangle Reef buoy and Packet Rock buoy to Port, proceed to Stragglers Mark, leaving it to Port.

Proceed to Packet Rock buoy, leaving it to Port. Proceed to Stragglers Mark, leaving it to Port.

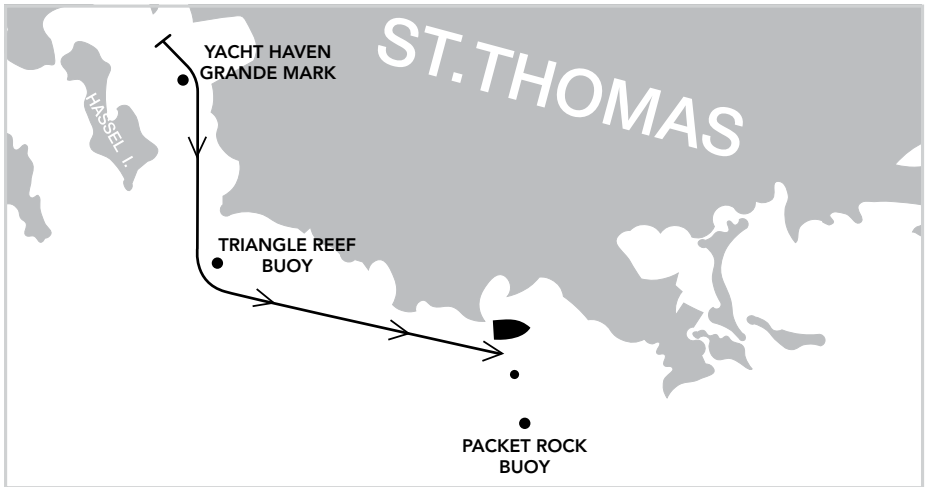
Proceed to finish in Cowpet Bay.



► PR-1 Packet Rock Course 1

Charlotte Amalie Harbor starting area

From the start, proceed to YHG Mark leaving it to Starboard. Proceed to Triangle Reef buoy, leaving it to Port. Proceed to finish at Signal Boat located to the north/west of Packet Rock Buoy RN "2". Finish between staff displaying a Blue Flag on the Signal Boat and a nearby inflatable mark.



► PR-2 Packet Rock Course 2

Charlotte Amalie Harbor starting area

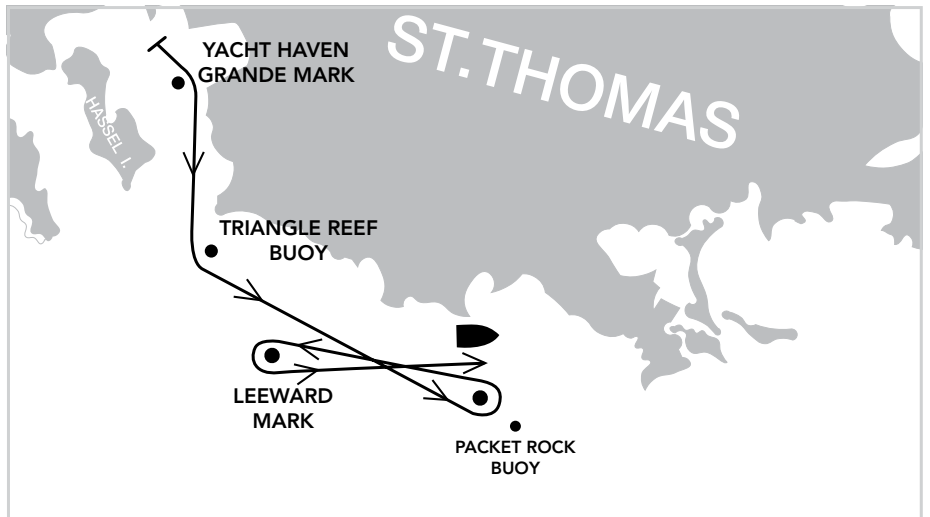
From the start, proceed to YHG Mark leaving it to Starboard. Proceed to Triangle Reef buoy, leaving it to Port.

Proceed to Weather Mark (which is the Finish Line Pin), leaving it to Port.

Proceed to Leeward Mark, approx. 0.5nm to leeward of Weather Mark.

Proceed to finish at Signal Boat located to the north/west of Packet Rock Buoy RN "2"

Finish between staff displaying a Blue Flag on the Signal Boat and a nearby inflatable mark.



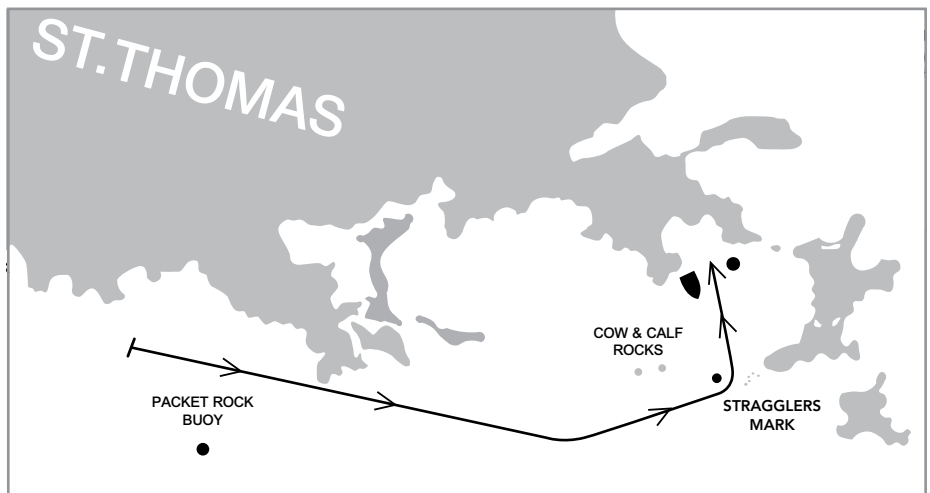
► PR-3 Packet Rock Course 3

Packet Rock Start Area

Start between staff displaying an Orange Flag on the Signal Boat and a nearby inflatable mark.

Leaving Cow & Calf Rocks to Port, proceed to Stragglers Mark leaving it to Port.

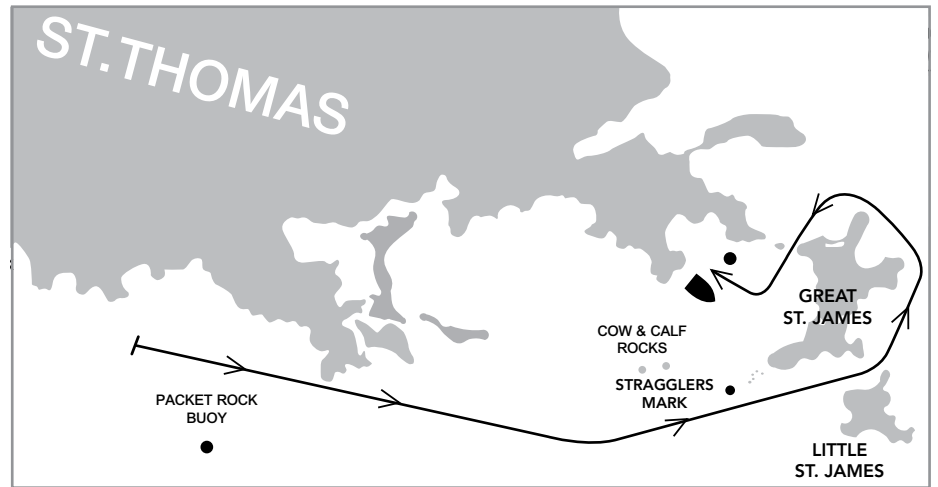
Proceed to finish in Cowpet Bay.



► PR-4 Packet Rock Course 4

Packet Rock Start Area

Start between staff displaying an Orange Flag on the Signal Boat and a nearby inflatable mark.
Leaving Stragglers mark and Great St. James Island to Port proceed to Current Cut.
Leaving Current Cut Rock to Starboard, proceed to finish in Cowpet Bay.



► **SC-1 South Cowpet Course 1 (18 nm)**

Charlotte Amalie Harbor starting area.

From the start proceed to Yacht Haven Grande Mark leaving it to Starboard.

Leaving Triangle Reef buoy to Port, proceed to Buck & Capella Islands, leaving them to Starboard.

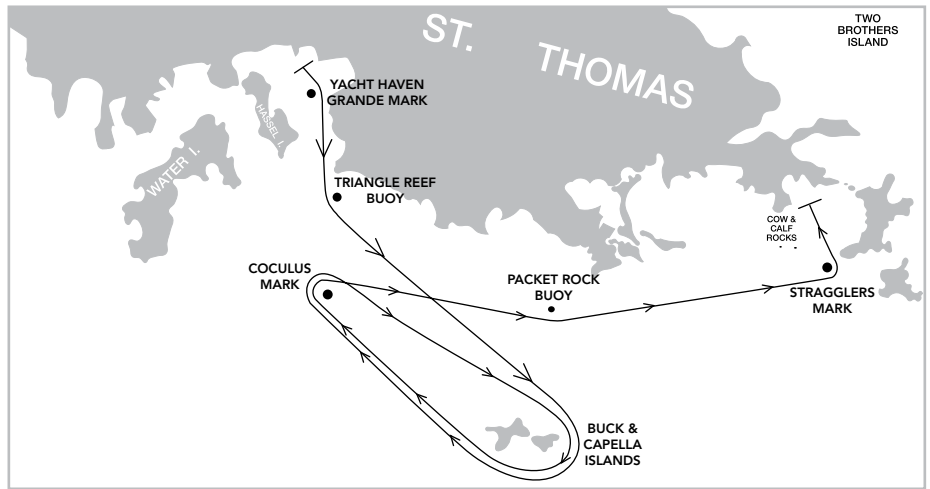
Proceed to Coculus Mark, leaving it to Starboard.

Return to Buck & Capella Islands, leaving them to Starboard.

Return to Coculus Mark leaving it to Starboard.

Leaving Packet Rock buoy to port, proceed to Stragglers Mark, leaving it to Port.

Proceed to the Finish in Cowpet Bay.

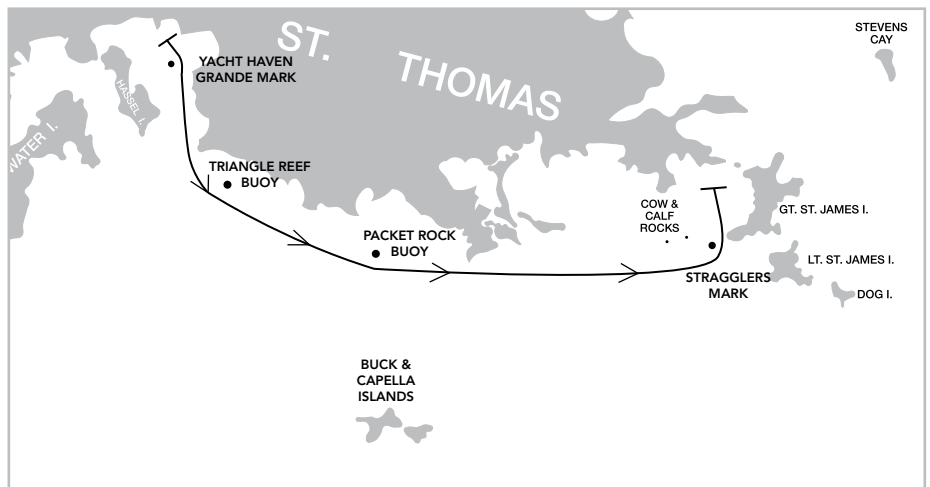


► **SC-2 South Cowpet Course 2 (12 nm)**

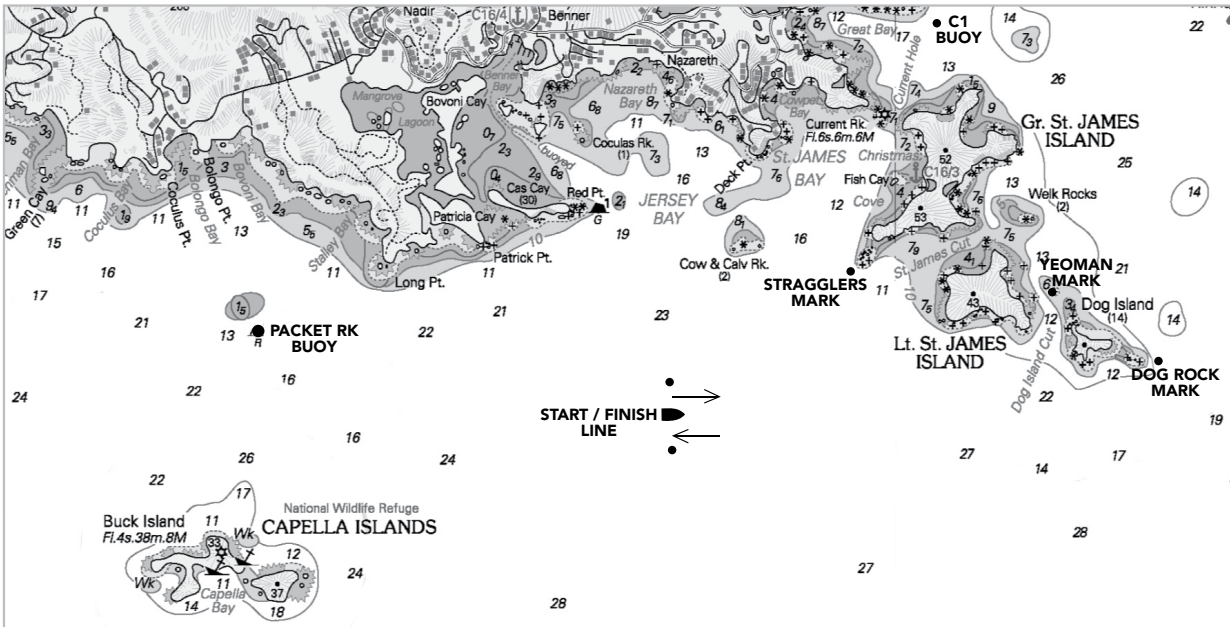
Charlotte Amalie Harbor starting area

From the start proceed to Yacht Haven Grande mark leaving it to Starboard. Leaving Triangle Reef buoy and Packet Rock buoy to Port proceed to Stragglers Mark, leaving it to Port.

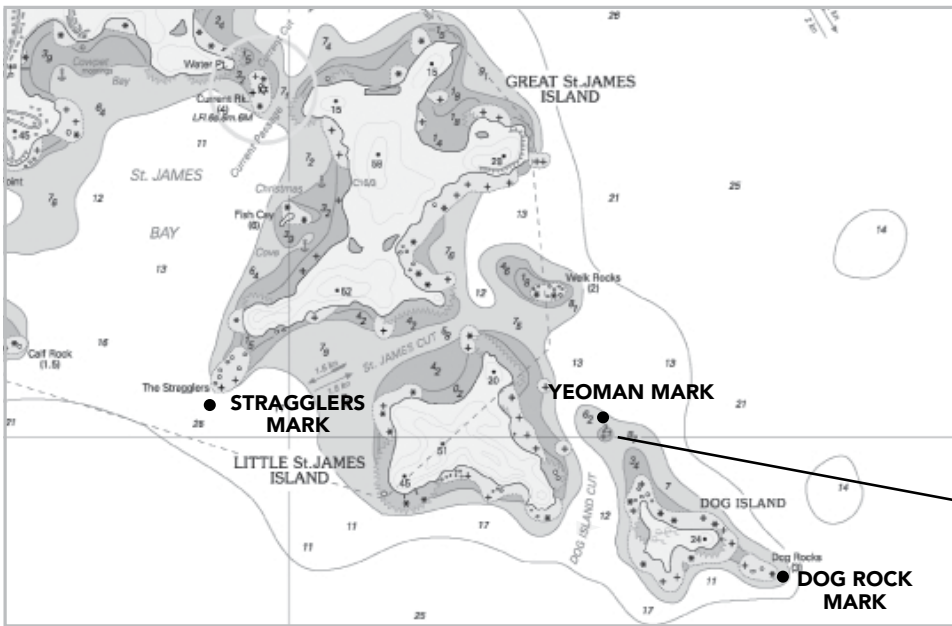
Proceed to Finish in Cowpet Bay.



▶ DOG ISLAND DETAIL A



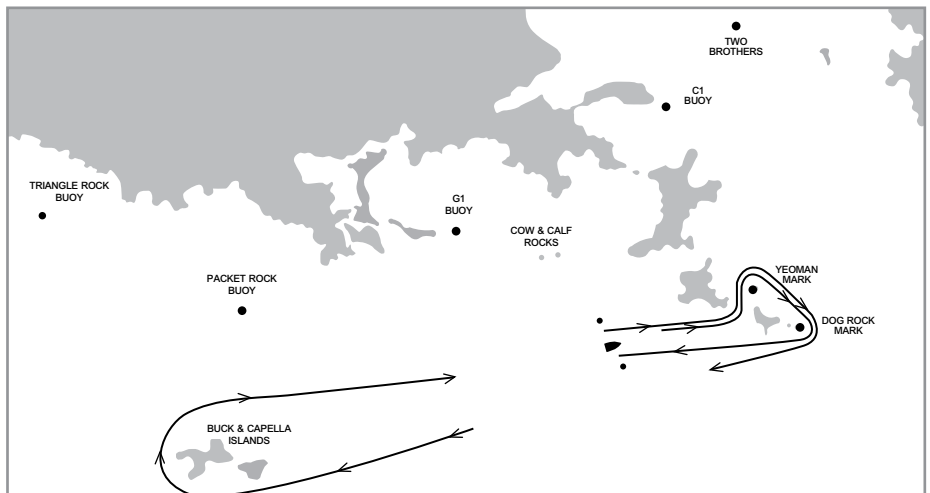
▶ DOG ISLAND DETAIL B



NOTE: Submerged rock may be identified by a set of small floats. These floats shall not be relied upon for navigation.

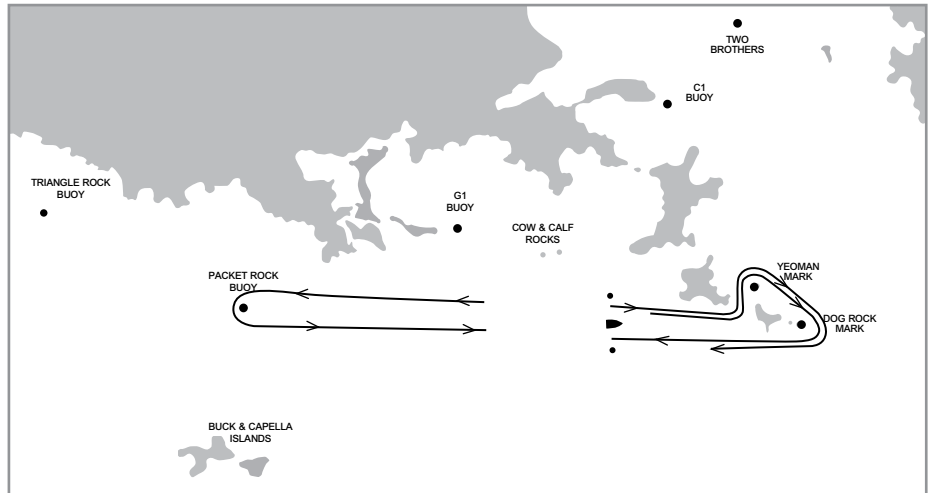
▶ D-1 Dog Island Course 1 (approx. 16.5 nm)

Cow & Calf starting area.
 From the start proceed through Dog Island Cut.
 Leave Yeoman Mark to Starboard, leave Dog Rock Mark to Starboard.
 Proceed to Buck & Capella Islands, leaving them to Starboard.
 Proceed thru Dog Island Cut.
 Leave Yeoman Mark to Starboard, leave Dog Rock Mark to Starboard.
 Proceed to finish.



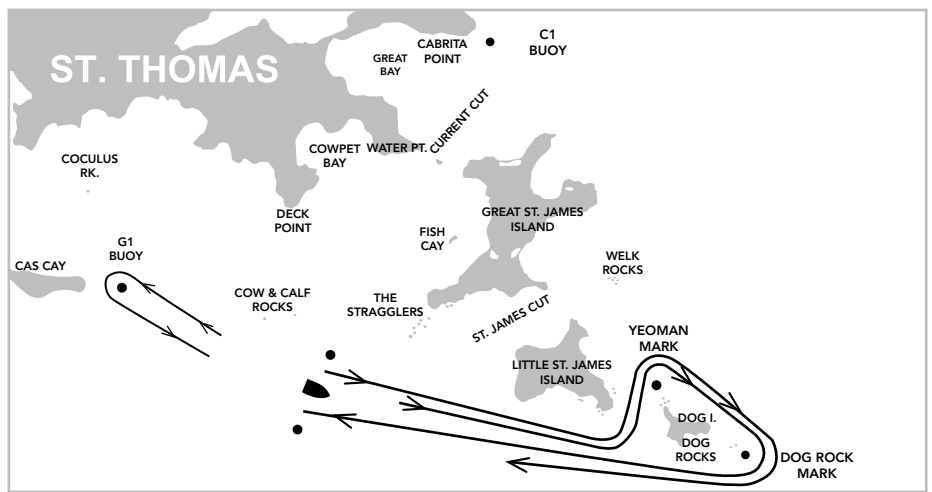
► D-2 Dog Island Course 2 (aprox. 14.5 nm)

Cow & Calf starting area.
 From the start proceed thru Dog Island Cut.
 Leave Yeoman Mark to Starboard, leave Dog Rock Mark to Starboard.
 Proceed to Packet Rock buoy, leaving it to Port.
 Proceed thru Dog Island Cut.
 Leave Yeoman Mark to Starboard, leave Dog Rock Mark to Starboard.
 Proceed to finish.



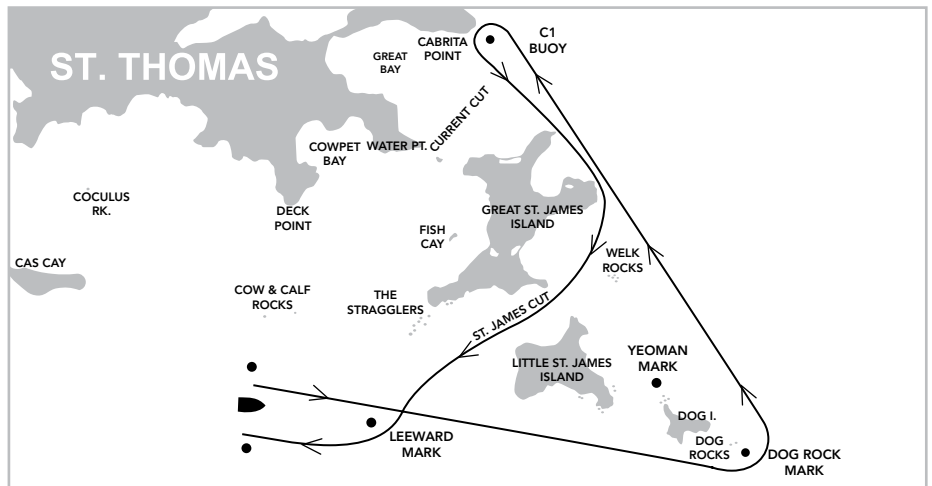
► D-3 Dog Island Course 3 (aprox. 10nm)

Cow & Calf starting area.
 From the start proceed thru Dog Island Cut.
 Leave Yeoman Mark to Starboard, leave Dog Rock Mark to Starboard.
 Proceed to G1 Buoy leaving it to Port.
 Proceed thru Dog Island Cut.
 Leave Yeoman Mark to Starboard, leave Dog Rock Mark to Starboard.
 Proceed to Finish.



► D-4 Dog Island Course 4 (aprox. 6.8 nm)

Cow & Calf starting area
 From the start proceed to Dog Rock Mark,
 leaving it to Port.
 Proceed to C1 Buoy (Green Can off Cabrita Point),
 leaving it to Port.
 Leaving Great St. James Island to Starboard,
 proceed thru St. James Cut, leaving Leeward mark to Starboard. Proceed to finish.



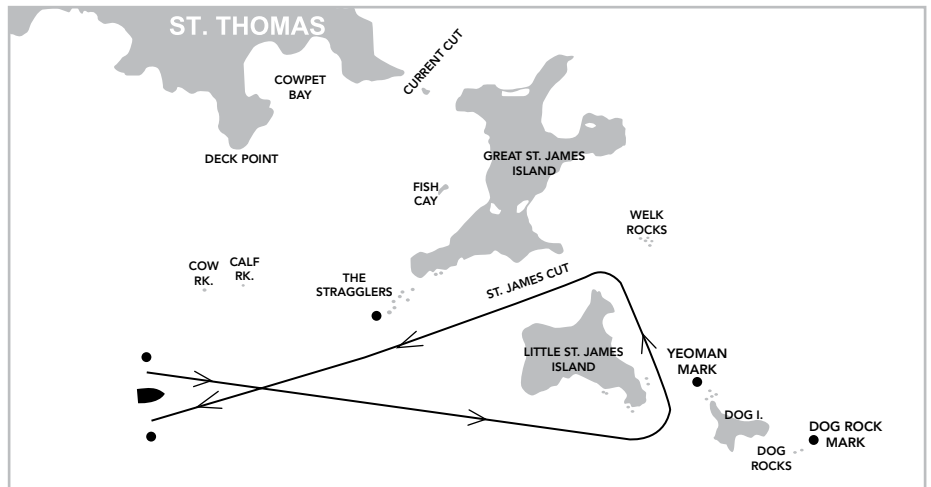
► SJ-1 St. James Course 1 (aprox. 3.5 nm)

Cow & Calf starting area

From the start, proceed thru Dog Island Cut leaving Yeoman Mark to Starboard.

Proceed thru St. James Cut.

Proceed to finish.



► SJ-2 St. James Course 2 (aprox. 7 nm)

Cow & Calf starting area.

From the Start proceed thru Dog Island Cut, leaving Yeoman Mark to Starboard.

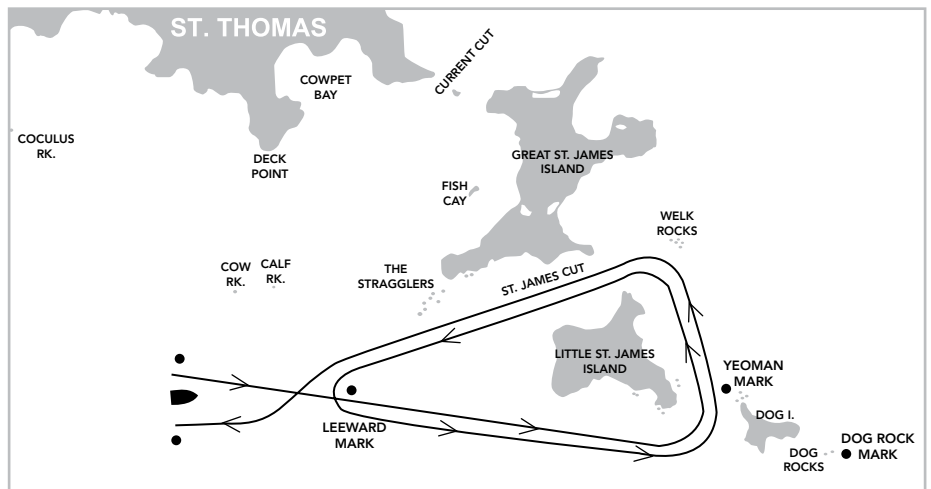
Proceed thru St. James Cut.

Proceed to Leeward Mark leaving it to Port.

Proceed thru Dog Island Cut, leaving Yeoman Mark to Starboard.

Proceed thru St. James Cut.

Proceed to finish.



► BI-1 Buck Island Course 1 (21.5 nm)

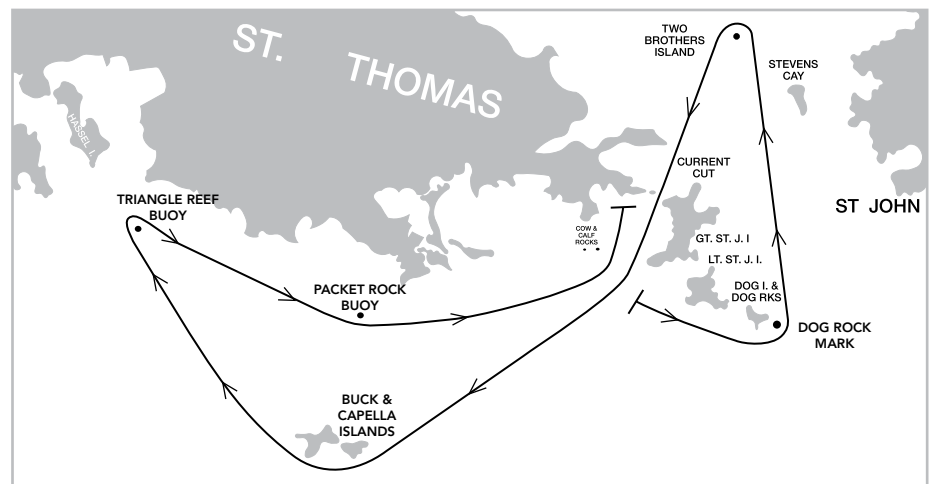
Cow and Calf Circle starting area

From the start, proceed to Dog Rock Mark leaving it to Port.

Proceed to Two Brothers Island, leaving it to Port. Leaving Current Cut Rock to Starboard, proceed through Current Cut to Buck & Capella Islands leaving them to Starboard.

Proceed to Triangle Reef buoy leaving it to Starboard.

Proceed to Packet Rock buoy leaving it to Port. Leaving Cow and Calf Rocks to Port, proceed to Finish in Cowpet Bay.



► BI-2 Buck Island Course 2 (18.5 nm)

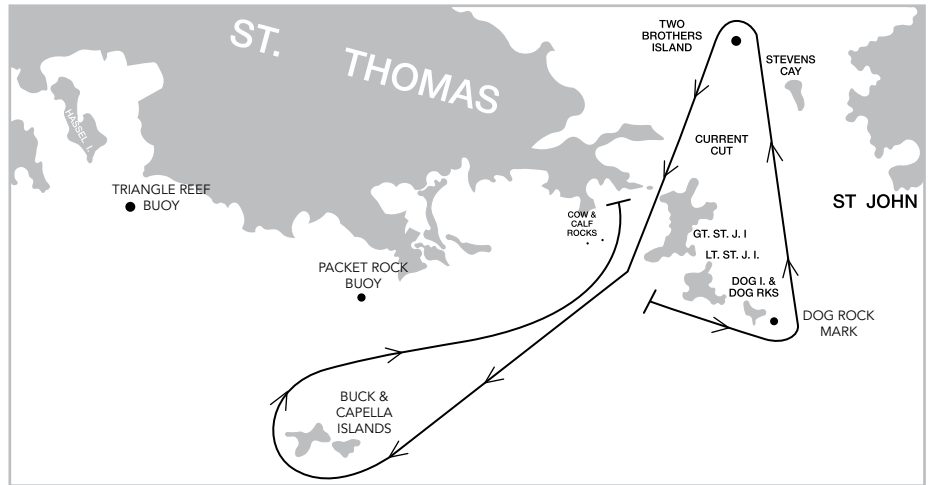
Cow & Calf starting area

From the start, Proceed to Dog Rock Mark leaving it to Port.

Proceed to Two Brothers Island, leaving it to Port.

Leaving Current Cut Rock to Starboard, proceed through Current Cut to Buck & Capella Islands leaving them to Starboard.

Leaving Packet Rock buoy to Port, and Cow and Calf Rocks to Port, proceed to Finish in Cowpet Bay.



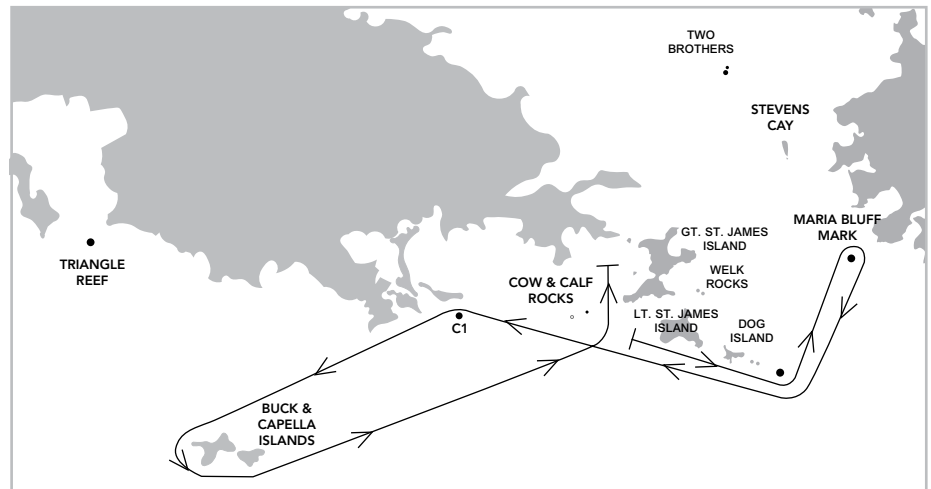
► BI-3 Buck Island Course 3 (16 nm)

Cow and Calf Circle starting area

Leave Dog Rock Mark to Port

Leave Maria Bluff Mark to Starboard, Leave Dog Rock Mark to Starboard, leave C1 Buoy to Port.

Proceed to Buck & Capella Islands leaving them to Port, leave Cow and Calf Rocks to Port. Proceed to finish in Cowpet Bay



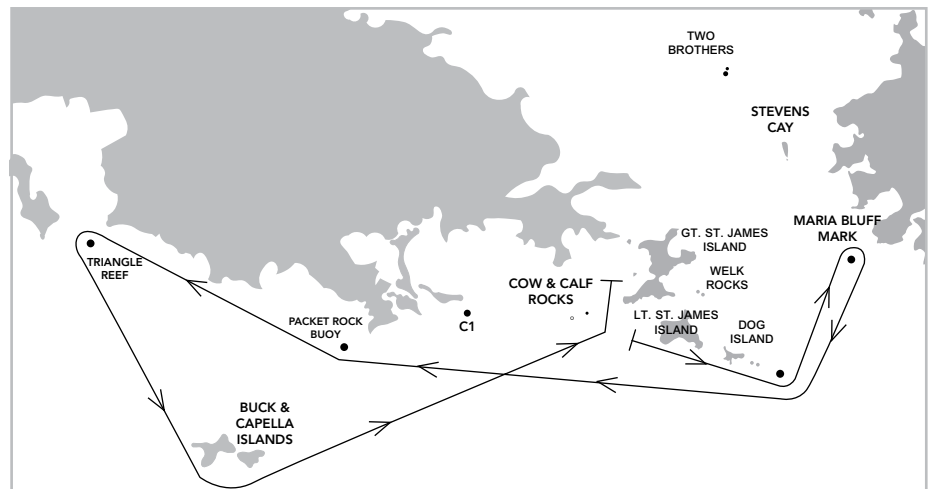
► BI-4 Buck Island Course 4 (19 nm)

Cow and Calf starting area

From the start leave Dog Rock Mark to Port, proceed to Maria Bluff Mark leaving it to Starboard.

Leave Dog Rock Mark to Starboard, Proceed to Triangle Reef Buoy leaving Packet Rock Buoy to Starboard.

Leave Triangle Reef Buoy to Port, leave Buck & Capella Islands to Port, leave Cow & Calf Rocks to Port, proceed to finish in Cowpet Bay.



► LI-1 Leduck Island Race 1 (20nm)

Cow & Calf starting area.

From the Start, leave Dog Rock Mark to port

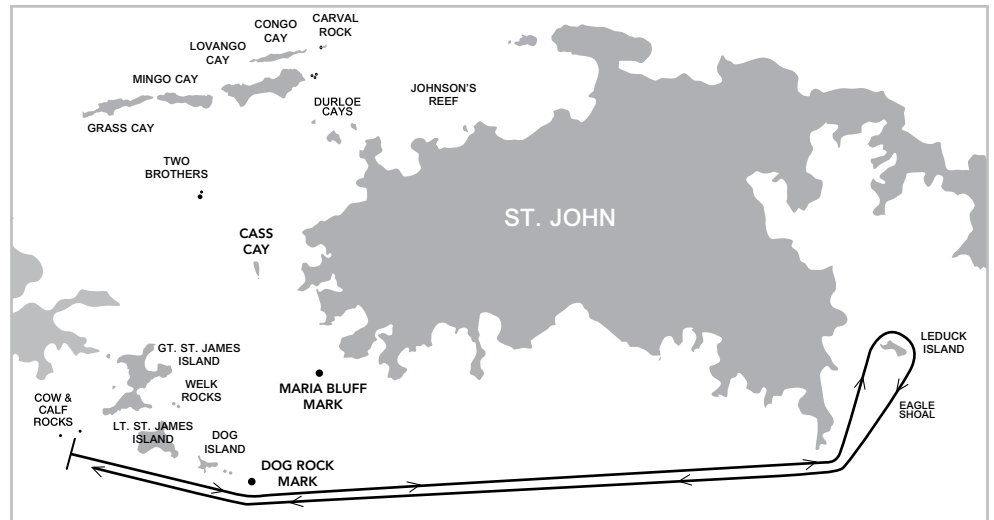
Proceed via the south coast of St. John

to Leduck Island.

Leave Leduck Island to starboard.

Leave Dog Rock mark to starboard.

Proceed to Finish.



► LI-2 Leduck Island Race 2 (22nm)

Cow & Calf starting area.

From the Start, leave Dog Rock Mark to Port,

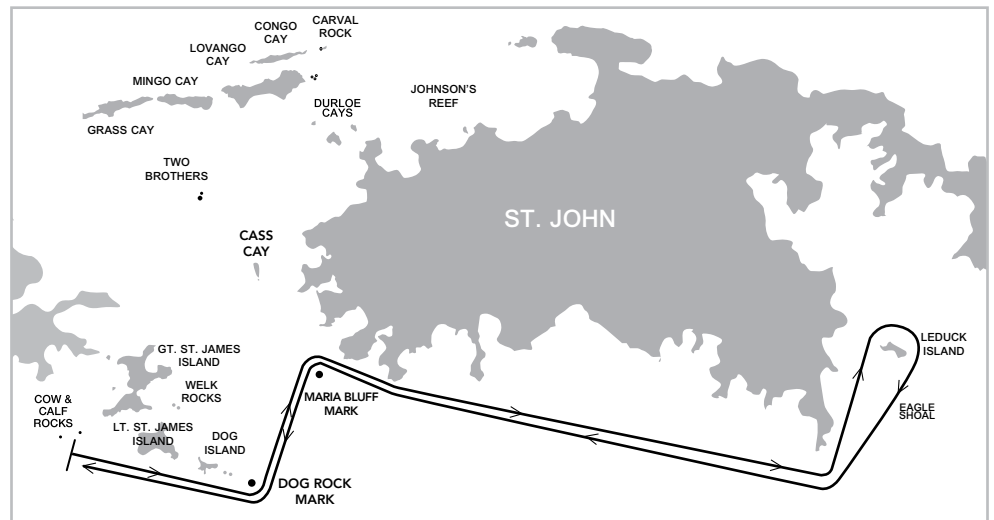
leave Maria Bluff Mark to Starboard. Proceed to

the south coast of St. John and round Leduck Is-

land, in Coral Bay, to Starboard.

Leave Maria Bluff Mark to Port, Leave Dog Rock

mark to starboard. Proceed to Finish.



► RB-1 Reef Bay Race (14nm)

Cow & Calf starting area

From the Start, leave Dog Rock mark to port,

leave Maria Bluff Mark to starboard.

Proceed via the south coast of St. John to Reef

Bay.

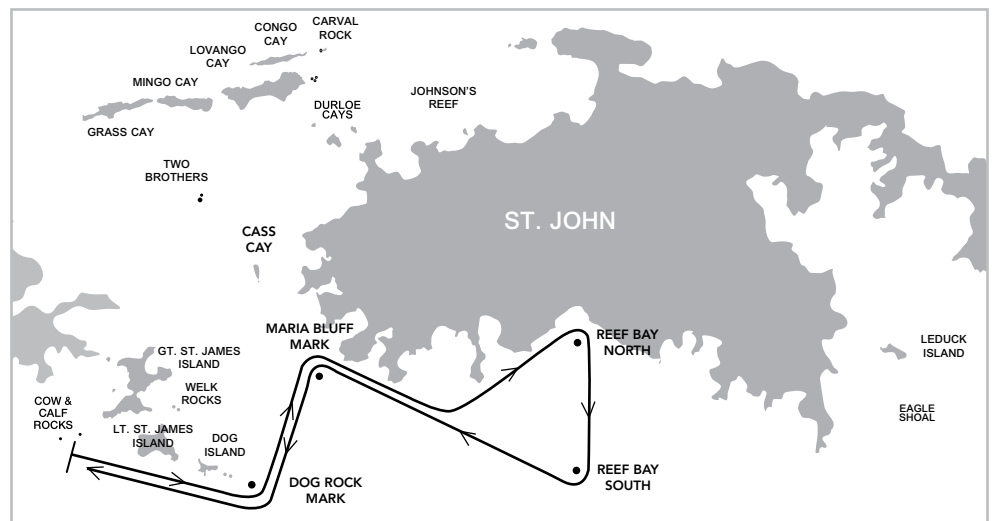
Leave Reef Bay North mark to starboard, leave

Reef Bay South mark to Starboard.

Leave Maria Bluff mark to port.

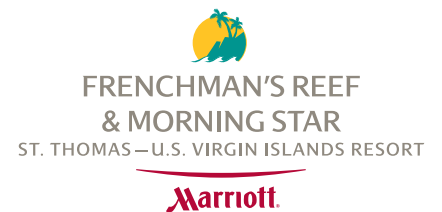
Leave Dog Rock mark to starboard.

Proceed to Finish.





A THANK YOU TO OUR SUPPORTERS



Crowley
ValEvents
DCM Project Managers
Modern Sauté



6224 Estate Nazareth 8-58
St. Thomas
U.S.V.I. 00802-1104

Tel: +1(340) 775-6320
Fax: +1(340) 775-4701
Email: irregatta@gmail.com
www.rolexcupregatta.com